

domus
stay.

Park Walk

Chelsea SW3

3 Bedrooms, 2 Bathrooms
For 6 guests





A three-bedroom stucco-fronted townhouse with an artistic persuasion. Characterful and considered.

Sitting between Fulham Road and King's Road, this home serves up the space to press pause on the world beyond the front door.

Inside, there's plenty to energise and soothe. Vibrant artwork hangs from the walls. Antique and reclaimed furniture is artfully positioned. Bright, tactile fabrics abound. Light diffuses softly across four floors – plenty of room to stretch your legs, wooden floorboards underfoot.

The open-plan living area is sunny in nature. All terracotta upholstery and lemon-yellow textiles reminiscent of the Mediterranean. Channel a carefree dolce vita vibe by picking up a page-turner and sinking into the chaise-longue in the reading nook, or an armchair by the inviting speckled marble fireplace.

In the warmer months, throw open the doors for sundowners in the courtyard patio garden, a hidden oasis of soft and spindly foliage, where a towering screen of bamboo provides a secluded backdrop for alfresco dining.

If the temperature drops, pull up an Eames-style chair and reconvene around the circular table in the open-plan kitchen-dining room. At lower ground floor level, the muted light is easy on the eyes down here.



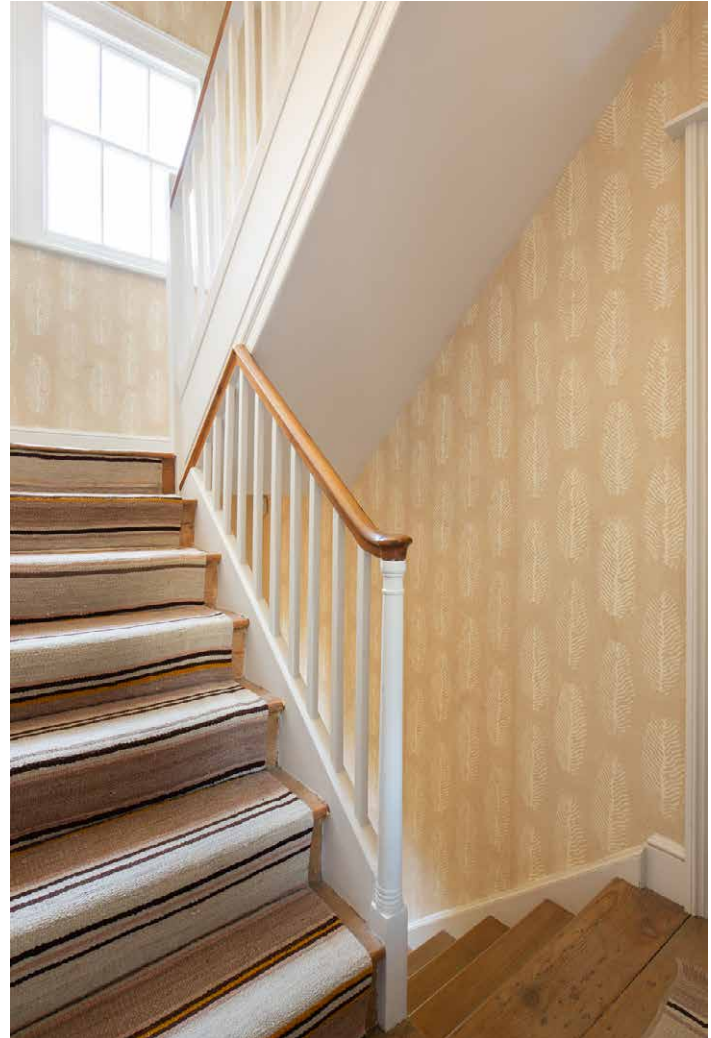
Mood enhancing and soul soothing. A gallery of uplifting colour and calm.



“

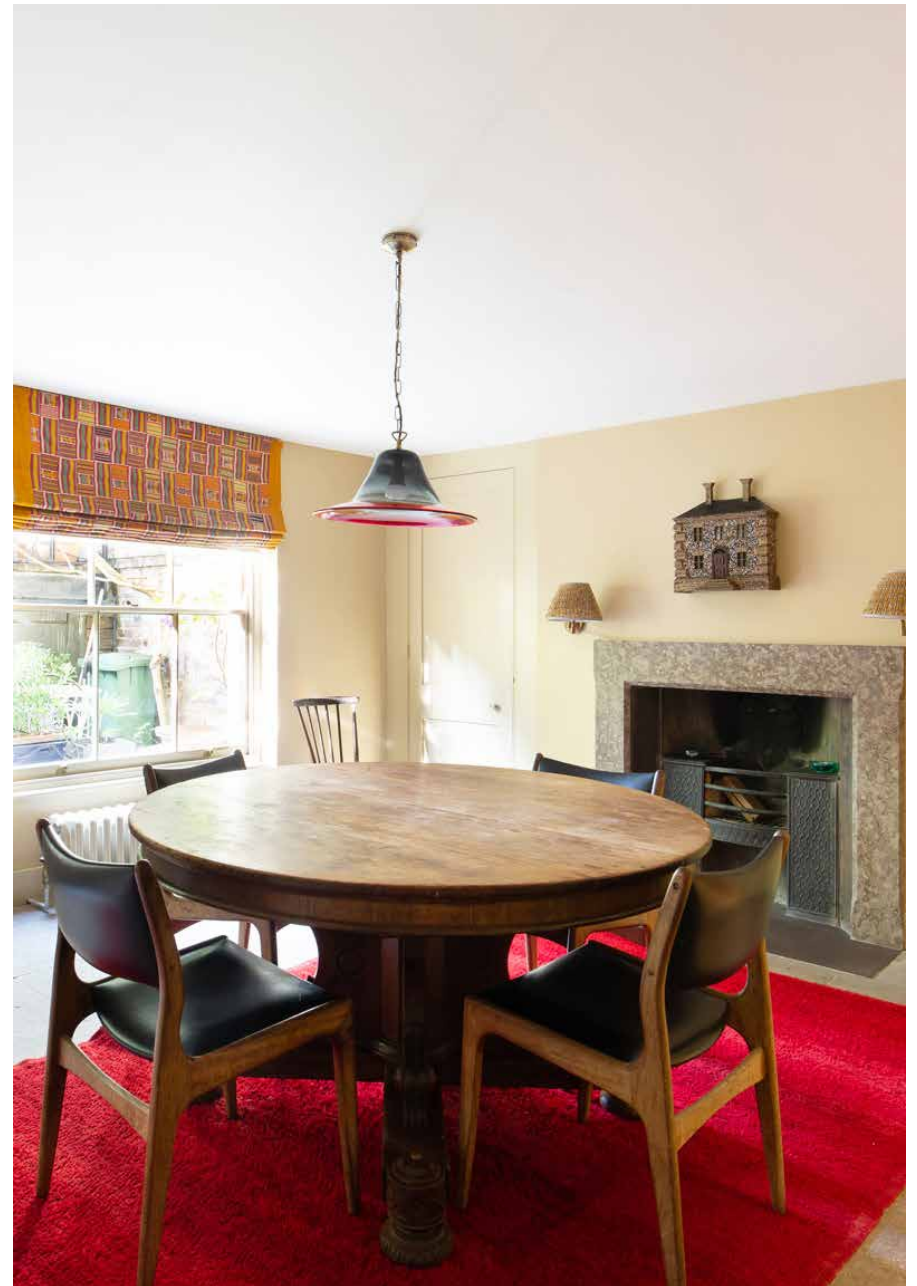
A light-filled, open-plan space. Kick off your shoes to feel the sun-warmed wooden floorboards underfoot.





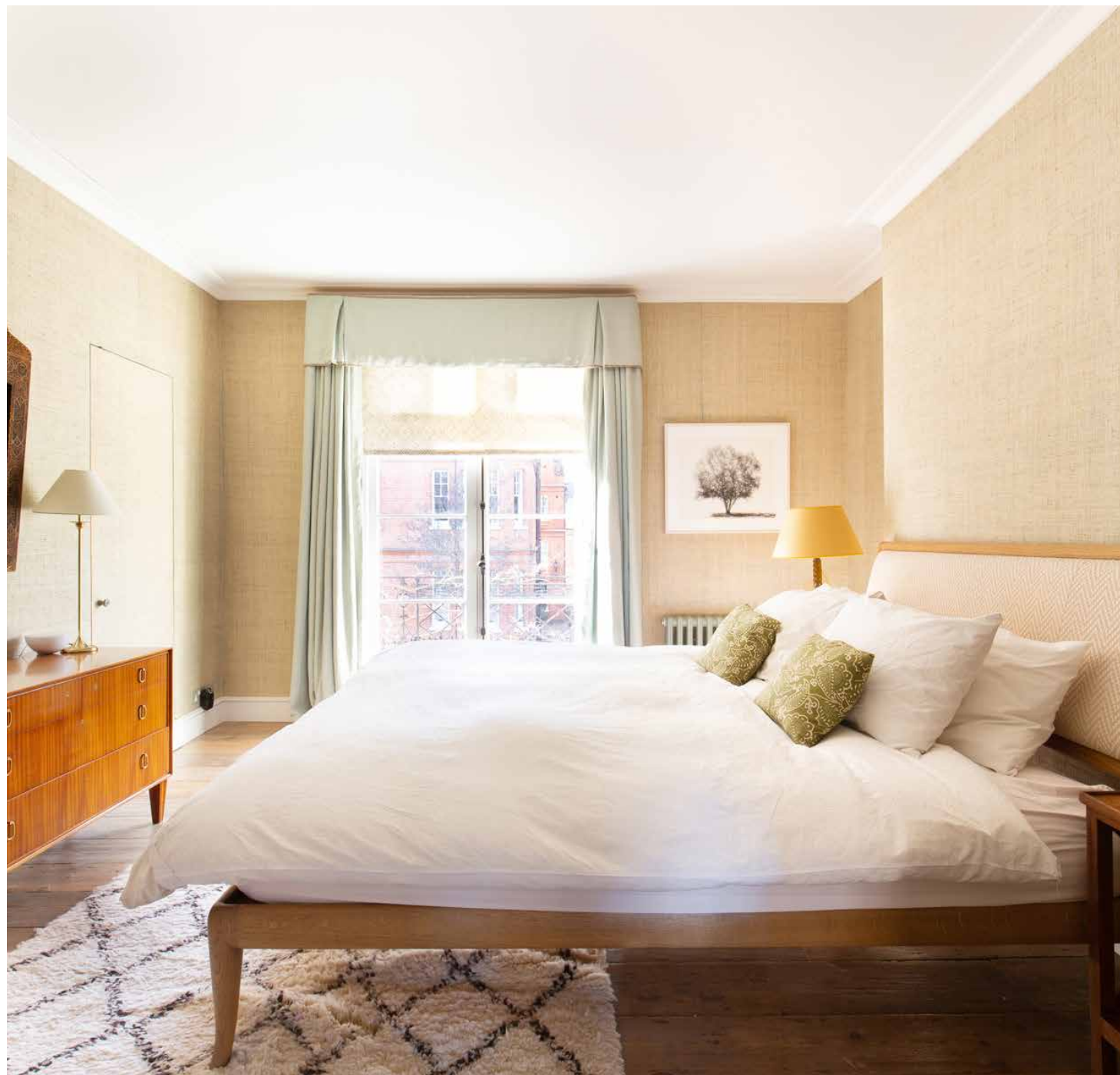
“

Switch on the low-slung lamps, light the fire, and gather friends and family around the circular dining table. Dinner at its most ambient.



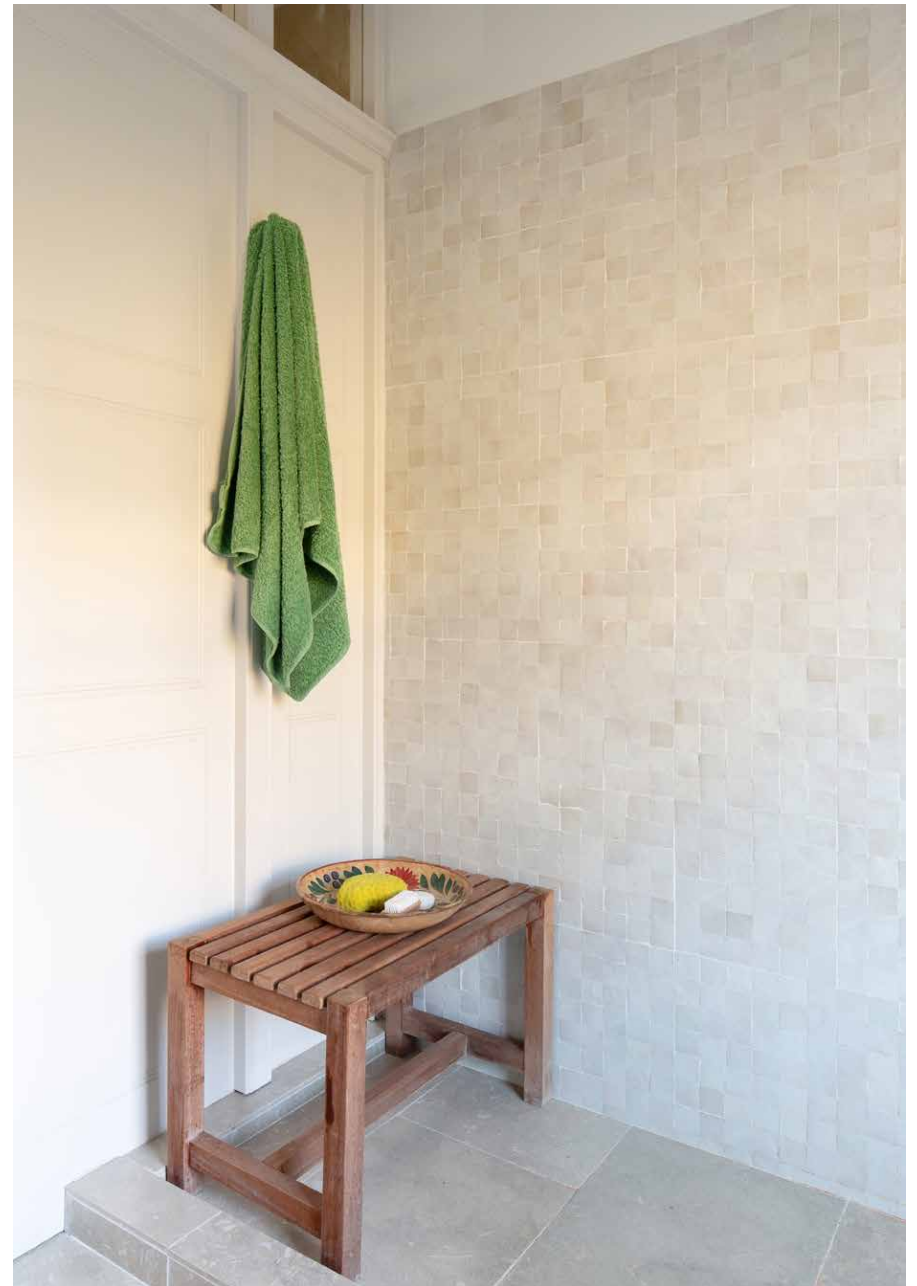


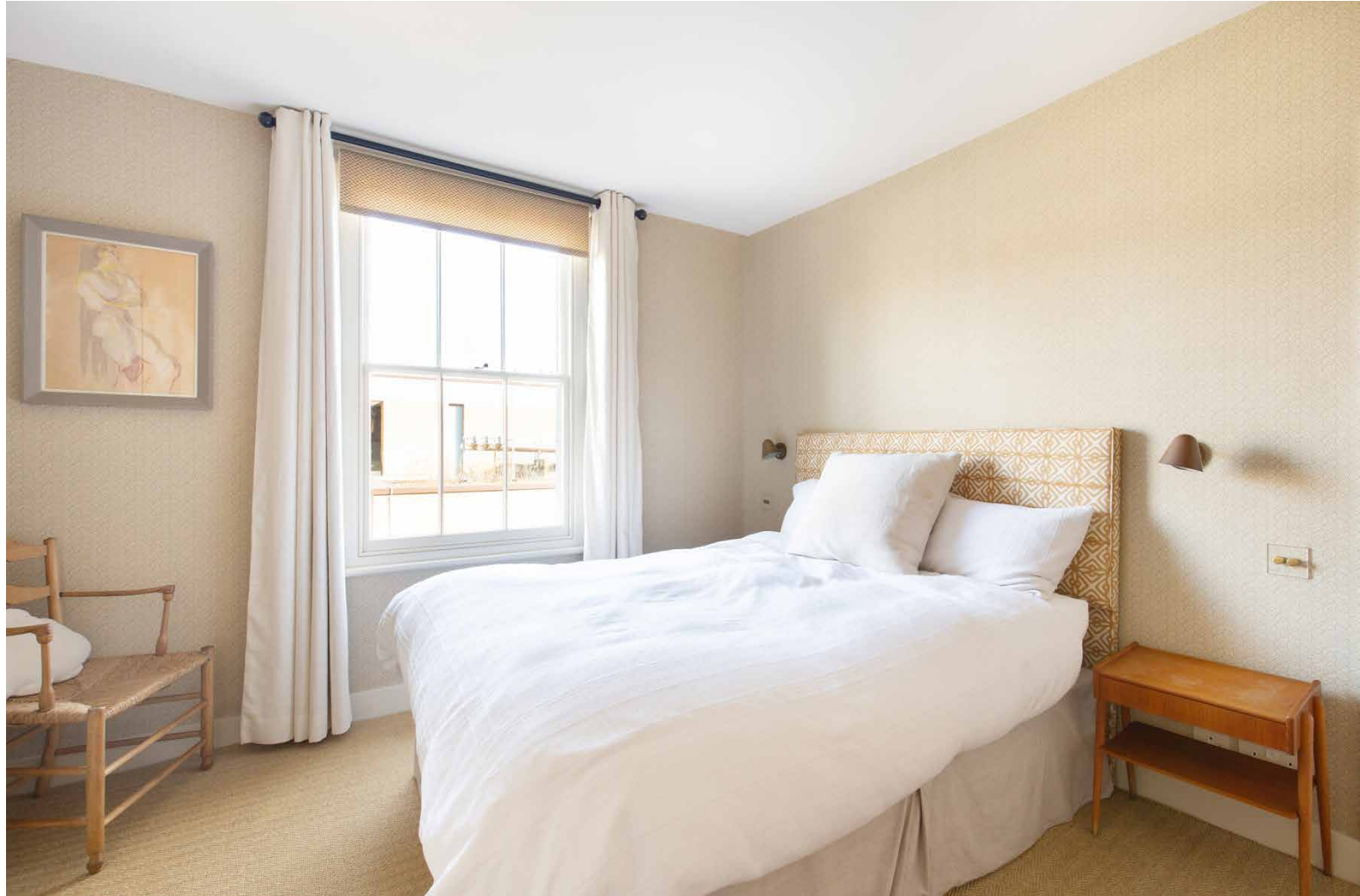
Upstairs, the pared-bared colour palette in the bedrooms lets the eclectic artwork and brightly upholstered headboards do the talking. From here, pad into one of two bathrooms. The textured Zellige tiles of a huge walk-in shower catch the sun on the first floor, while up on the second floor, a pistachio green mosaic design surrounds a tub.



“

Recharge after a day of exploring the neighbourhood in the deep tub or start the morning off right in the rainfall shower.











LOCATION

The best-of-both-worlds awaits at Park Walk - a welcome breather from the bustle of the King's Road and a short stroll from the beating heart of Chelsea.

Work up a sweat with a vinyasa flow yoga session at Triyoga, pound the pavements of the King's Road, caffeinate over brunch at Bluebird, tuck into a seafood platter at Chicama, or catch a flick at The Everyman. If you want to turn down the temp, stretch your legs and head towards the river for a scenic stroll.



PROPERTY HIGHLIGHTS

- Three reception rooms
- Separate kitchen
- Principal bedroom
- Two further bedrooms
- Two bathrooms
- Utility room
- Two gardens
- Shared driveway
- Royal Borough of Chelsea & Kensington



Approximate Area = 169.6 sq m / 1825 sq ft

Office = 11.4 sq m / 123 sq ft

Total = 181.0 sq m / 1948 sq ft

Surveyed and drawn in accordance with the International Property Measurement Standards (IPMS 2: Residential)
fourwalls-group.com 829254



domus stay.

Please don't hesitate to get in touch
if you have any questions or require
any further information.

hello@domusstay.com

+44 (0)20 8168 8880

Domus Stay provides the perfect combination of property, place and personal service for the world's most remarkable people. If you have any questions, or if we can help in any way, please contact us on the above number. Be it about a property you have, a property you want, dates to check or any special requirements you may need, we'd love a chat.

