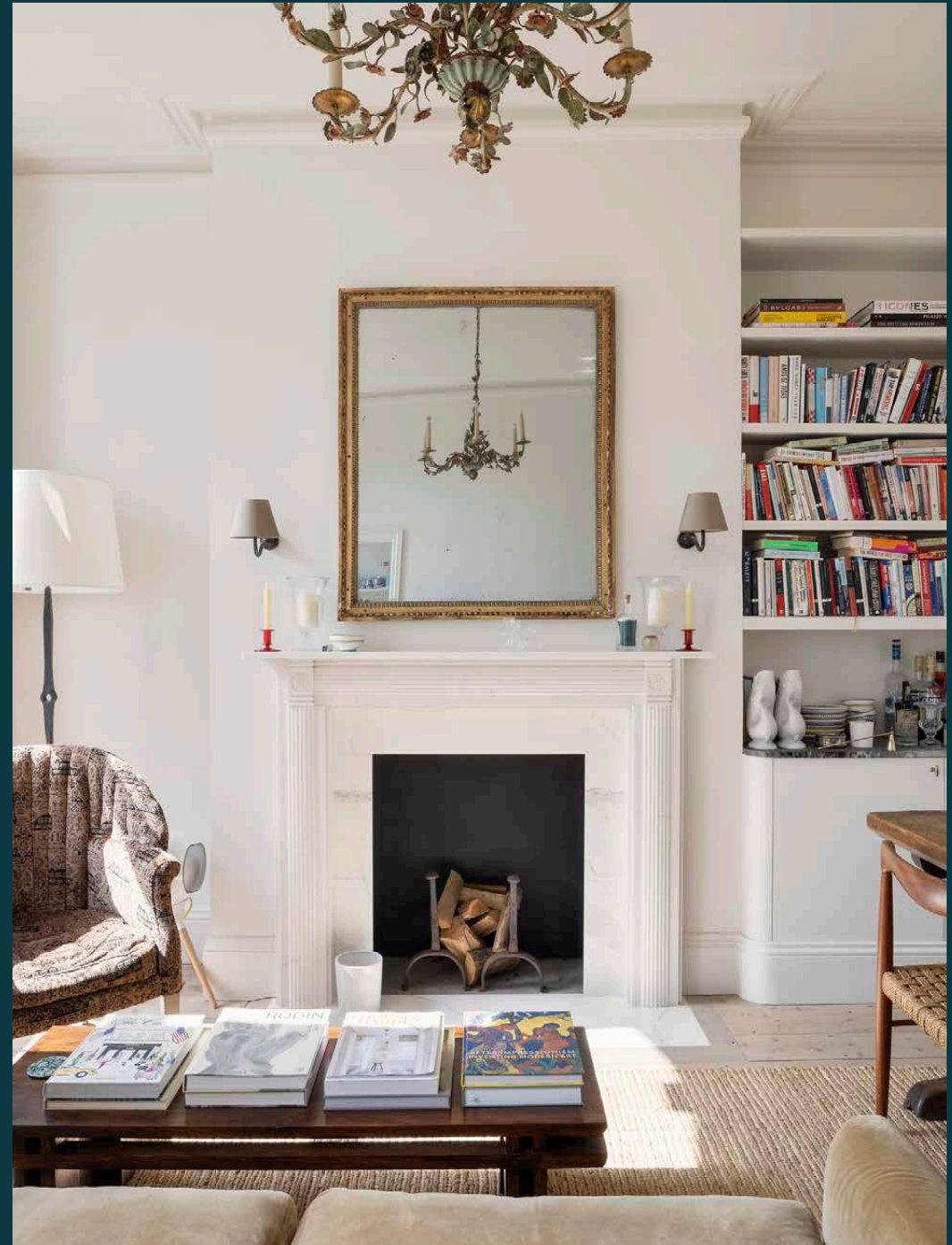


domus
stay.

St Charles Square

Notting Hill W10

1 Bedrooms, 1 Bathrooms
For 3 guests





Lateral living meets considered design. A period footprint uplifted with the contemporary eye of Rachel Walker at Raw Interiors, St Charles Square is stylish, soothing and serene.

Outside, St Charles Square bears all the hallmarks of its period pedigree. Inside, find a two-bedroom apartment reimagined with timeless style for the modern urban dweller.

A soothing natural palette characterises the living space. Its all exposed pine floors, warm tones and reams of natural light. A dialogue between the old and new, heritage features – the sleek marble fireplace, high ceilings and sash windows – converse with mid-century dining chairs by W. H. Klein for Bramin, an Italian chandelier and relaxed tuxedo sofa. Flawless finishes are indicative of the precision taken in the home's design; note the bar area which pairs green marble surfaces with subtly curved joinery. It's a stylish corner for cocktail creativity. Cook up a storm in the kitchen, where white Marlborough Tiles and Belgian blue limestone counter tops are sleek and streamlined. A state-of-the-art Devialet sound system sets the scene for evening dinner parties.

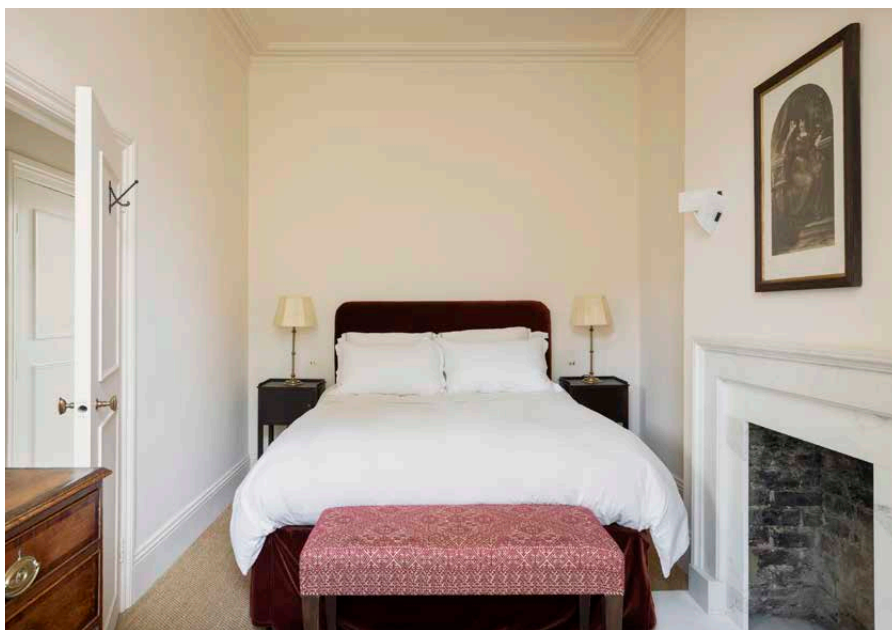


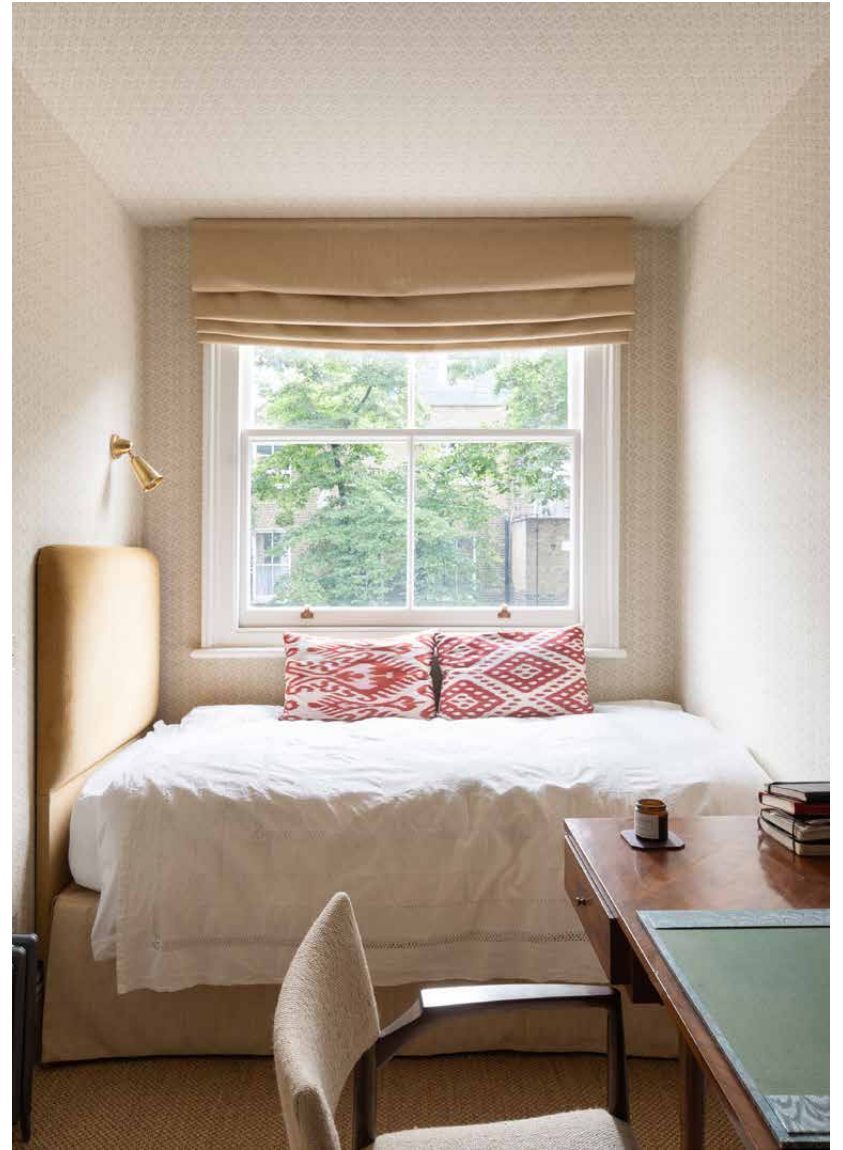
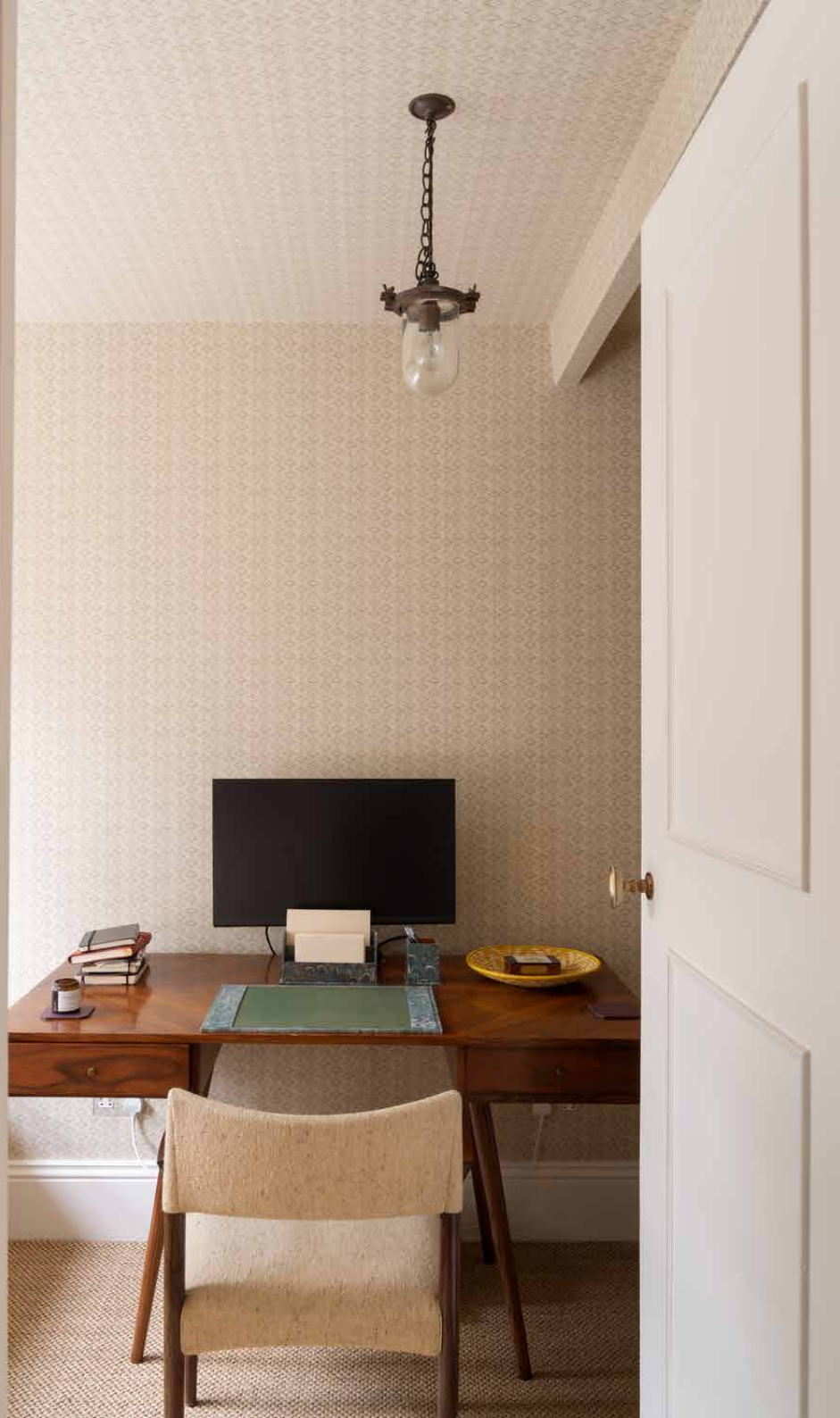
“

A combination of the homeowner's travels in France, Danish mid-century modern furniture and the Italian influences employed by Raw Interiors, the interiors pay homage to the continent's stylish and sophisticated character.



With soft hues and serene atmospheres, the sleeping quarters are tranquil places in which to press pause. There's a timeless minimalism to the master bedroom's pared-back palette, complete with floor-to-ceiling wardrobe and Howe London cherry bedside tables. In the bathroom next door, dusty pink Tadelakt walls contrast with marble floors and gilded faucets. A cosy guest bedroom is wrapped in Robert Kime wallpaper, with an antique Danish desk positioned for those peaceful home-working days.









LOCATION

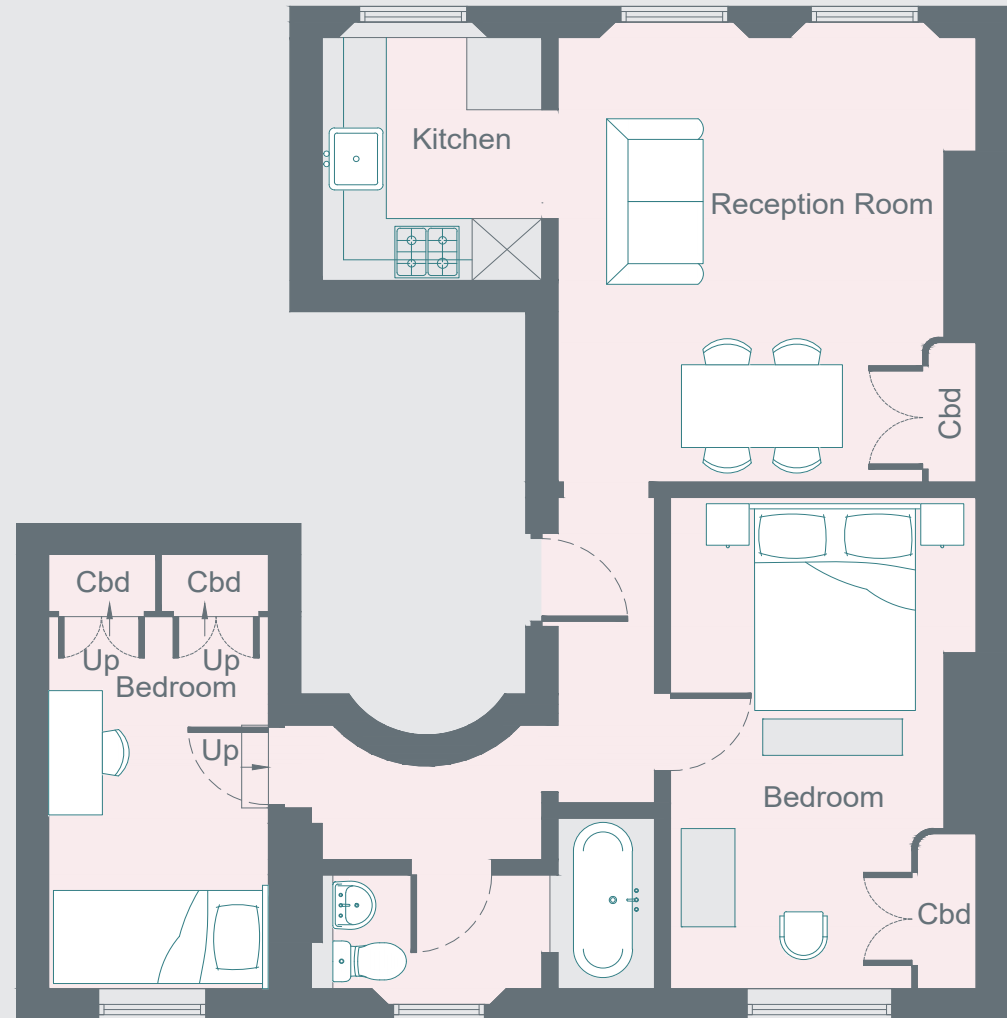
There's a welcoming, community feel to North Kensington, where the streets are lined with period architecture and leafy trees.

A short walk takes you to Golborne Road, characterised by its friendly local spirit and wealth of boutiques and eateries. If you find yourself there in the morning, pick up a coffee and pastel de nata from the coveted Lisboa Patisserie before browsing the vintage stalls of the market; for evening ventures, book a dinner at one of Layla's Bakery's supper clubs or head to the Elgin for a drink. Wormwood Scrubs for a breath of fresh air, tennis and picnics. With Latimer Road and Ladbrooke Grove stations close by, there's easy access into the city and beyond.



PROPERTY HIGHLIGHTS

- Open-plan kitchen and reception room
- Master bedroom
- Guest bedroom
- Family bathroom
- Royal Borough of Kensington & Chelsea



First Floor

Approximate Area = 56.7 sq m / 610 sq ft

Surveyed and drawn in accordance with the International Property Measurement Standards (IPMS 2: Residential)
fourwalls-group.com 876799

**domus
stay.**

Please don't hesitate to get in touch if you have any questions or require any further information.

hello@domusstay.com

+44 (0)20 8168 8880

Domus Stay provides the perfect combination of property, place and personal service for the world's most remarkable people. If you have any questions, or if we can help in any way, please contact us on the above number. Be it about a property you have, a property you want, dates to check or any special requirements you may need, we'd love a chat.

