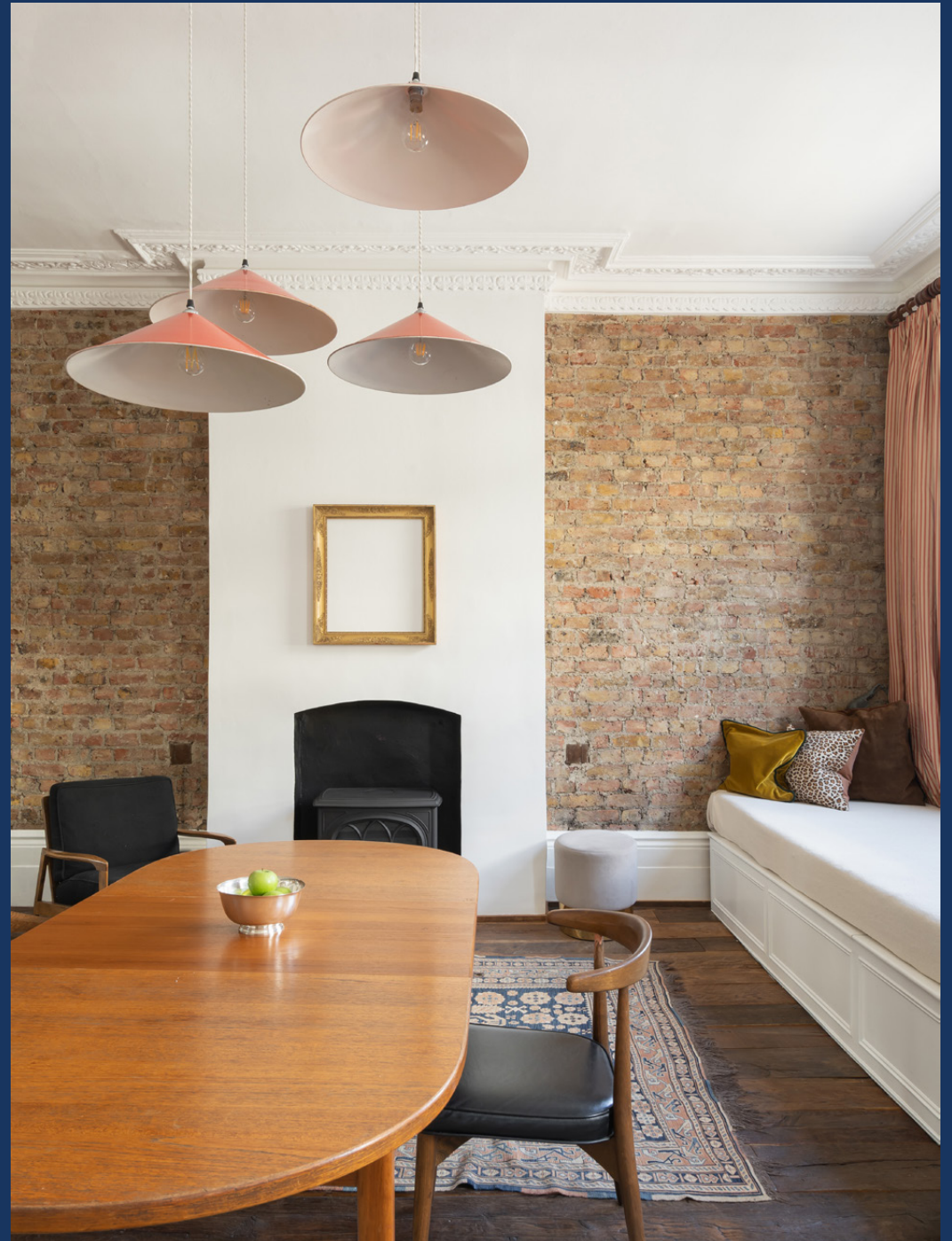


domus
stay.

Westbourne Grove

Bayswater W2

1 Bedrooms, 1 Bathrooms
For 2 guests





A dialogue of spacious proportions, natural light and compelling materials. A one-bedroom apartment elevated by its enviable proximity to Notting Hill's best offerings.

Down a discreet entrance just off Westbourne Grove, a one-bedroom apartment marries light-flooded lateral living with warm tones and industrial finishes.

Enter a spacious, open-plan kitchen and dining room, with a texturally engaging exposed-brick wall and sweeping wood floors. Read the morning paper or cosy up with your favourite novel on the window seat, with views overlooking inviting street below. Sitting opposite, a striking kitchen unit: distressed mirrored cabinets and copper finishes reflect gilded light across its surface. Culinary creativity never felt so stylish. A cluster of pink-toned pendant lights illuminate the dining table – envisaged for evenings spent with loved ones.



High ceilings and reams of light converse with industrial materials, propelling this period home into the 21st century.



After a day in the bustling city, head to the bedroom where hushed tones and high ceilings offer a relaxed feel. It's served by a sleek bathroom next door; with mirrored cabinets continuing the home's alluring material palette.







Arguably one of Notting Hill's most vibrant and fashionable streets, Westbourne Grove is home to a wealth of boutiques, eateries and amenities.

LOCATION

Westbourne Grove is an exemplar of sophisticated Notting Hill living.

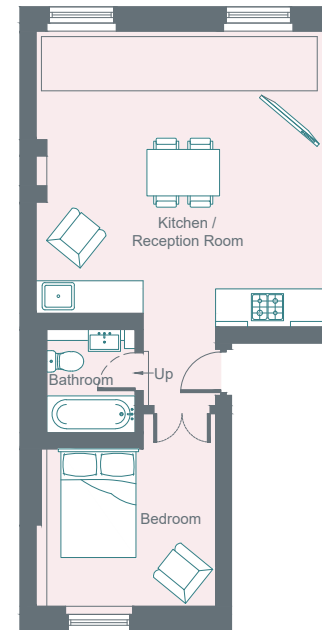
Just below the apartment, Planet Organic is your go-to for locally-sourced produce and grocery essentials. Pick up a coffee and croissant at Beam before browsing the array of boutiques along the street. Aesop for Australian-imagined skincare; refresh your wardrobe at Parisian-designed Sézane; or treat yourself to artisanal chocolates at Melt. It's a short walk to the expansive grasses of Hyde Park – a breath of fresh air amidst the busy city. Spend an evening of fine dining at the Ledbury – be home in 10. With a range of tube stations within walking distance, there's easy access into central London and beyond.



PROPERTY HIGHLIGHTS

- Open-plan kitchen and reception room
- Double bedroom
- Bathroom
- Royal Borough of Kensington & Chelsea

☐ = Reduced head height below 1.5m
= Limited use area



First Floor

Approximate Area = 46.6 sq m / 501 sq ft
Including Limited Use Area (0.1 sq m / 1 sq ft)

Surveyed and drawn in accordance with the International Property Measurement Standards (IPMS 2: Residential)
fourwalls-group.com 884803





Please don't hesitate to get in touch if you have any questions or require any further information.

hello@domusstay.com

+44 (0)20 8168 8880

Domus Stay provides the perfect combination of property, place and personal service for the world's most remarkable people. If you have any questions, or if we can help in any way, please contact us on the above number. Be it about a property you have, a property you want, dates to check or any special requirements you may need, we'd love a chat.

