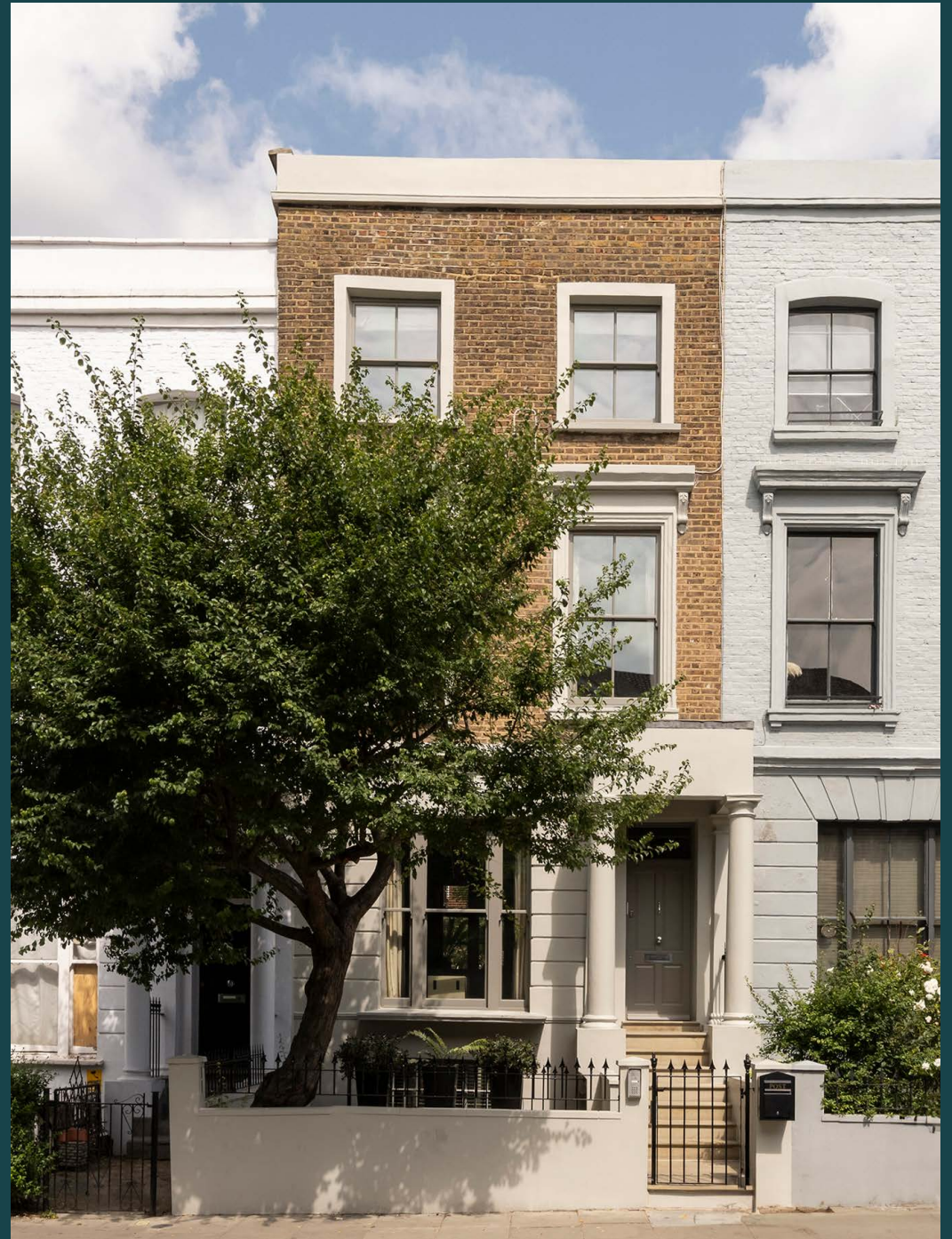


domus
stay.

Westbourne Park Road

Notting Hill W11

4 Bedrooms, 4 Bathrooms
For 5 guests





**A sprawling stucco-fronted townhouse
with contemporary finesse, just around
the corner from Notting Hill's lively
Portobello Road.**

Set over five floors of an imposing Notting Hill townhouse, this immaculate four-bedroom home draws on its ample volumes to deliver generous living spaces designed for family life. A sense of opulence reigns throughout, elevated by a sophisticated palette of finishes.

The double reception room is an atmospheric space for entertaining or curling up with a book in front of the fire. Divided into two distinct seating areas, its generous period proportions are accentuated by slate grey accents. Access to a cast iron-fronted terrace invites the outside in.

The open-plan dining room and kitchen is similarly expansive. Stretched across the lower ground floor, it's a pristine backdrop for gatherings. Streamlined cabinets and a white marble-topped island offer ample cooking and preparation space. Seat a crowd at the large dining table; pendant lighting overhead sets the



A palette of grey tones and sophisticated finishes propels this period property into the 21st century



“

A sense of contemporary opulence reigns throughout, elevated by a sophisticated palette of finishes





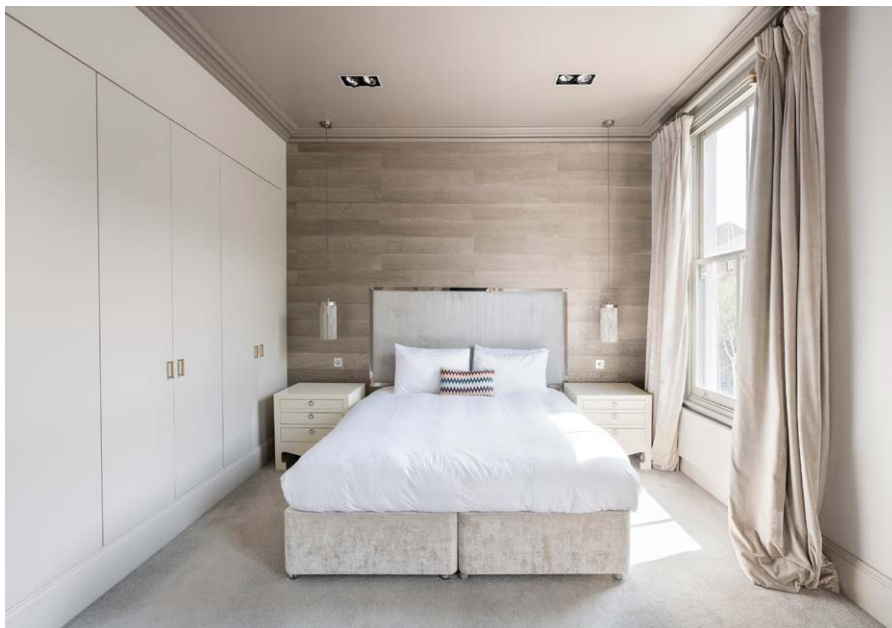
When the weather obliges, slide back the bi-folding doors to the smart patio garden, lined with olive trees that shade cushioned outdoor seating. Tucked away at the back, there's a separate office that's an ideal spot for catching up on some work.

Log off in the basement media room – a moody space with a cinematic quality. A large-screen TV sits on a panelled wall for the ultimate silver screen experience; kick back in the large L-shaped sofa. A guest bedroom and bathroom are also found on this level.





Occupying the entire first floor, the principal bedroom is the definition of luxury. With its soft carpets, inviting king-sized bed and working fireplace, every detail has been considered. Past a row of fitted wardrobes, the en suite bathroom is just as enticing. Featuring a freestanding bathtub, floor-to-ceiling mirrored wall and double basins, it offers a restorative start to the day. On the second floor, two further bedrooms with fitted storage share a shower room.









LOCATION

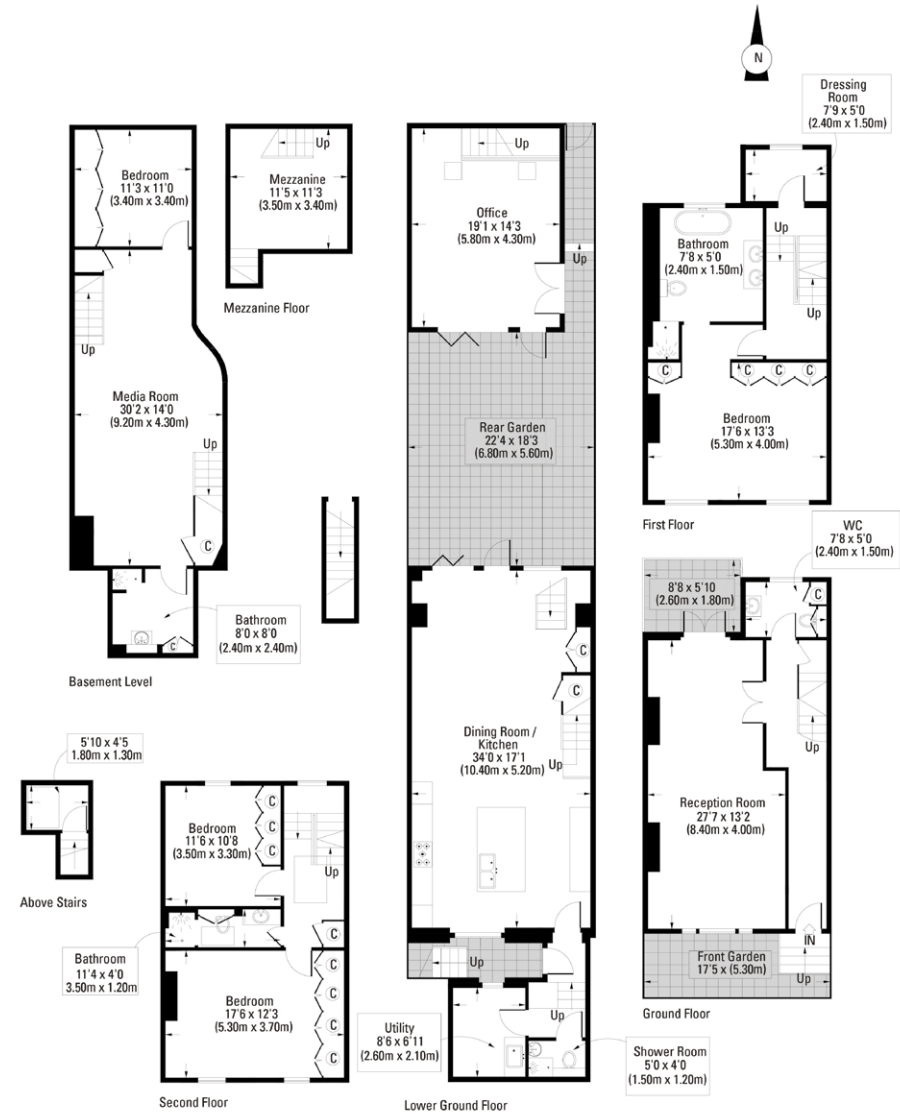
The beating heart of west London, Portobello Road's antique traders and vintage stalls are a few paces away.

Kick off your morning with a pastry from Fabrique and a brew from Coffee Plant or linger over an Aussie-style brunch at Farm Girl. Join the lunchtime crowds to sample the global delights of the road's food traders – or escape with a walk around the lawns of Hyde or Holland Park. Wander towards Westbourne Grove to refresh your wardrobe at Sézane or Reformation. For fine dining, there's Core by Clare Smyth or Gold, both just minutes away.



PROPERTY HIGHLIGHTS

- Formal reception space
- Contemporary kitchen and dining room
- Four double bedrooms
- Four bathrooms
- Media room
- Patio garden
- Garden office separate to main house
- The Royal Borough of Kensington & Chelsea



Approx. Gross Internal Floor Area 3334 Sq. Ft. / 310 Sq. M.
 Floor plans are for illustrative purposes only and not to scale.
 Compliant with RICS code of measuring practice.



Please don't hesitate to get in touch if you have any questions or require any further information.

hello@domusstay.com

+44 (0)20 8168 8880

Domus Stay provides the perfect combination of property, place and personal service for the world's most remarkable people. If you have any questions, or if we can help in any way, please contact us on the above number. Be it about a property you have, a property you want, dates to check or any special requirements you may need, we'd love a chat.

