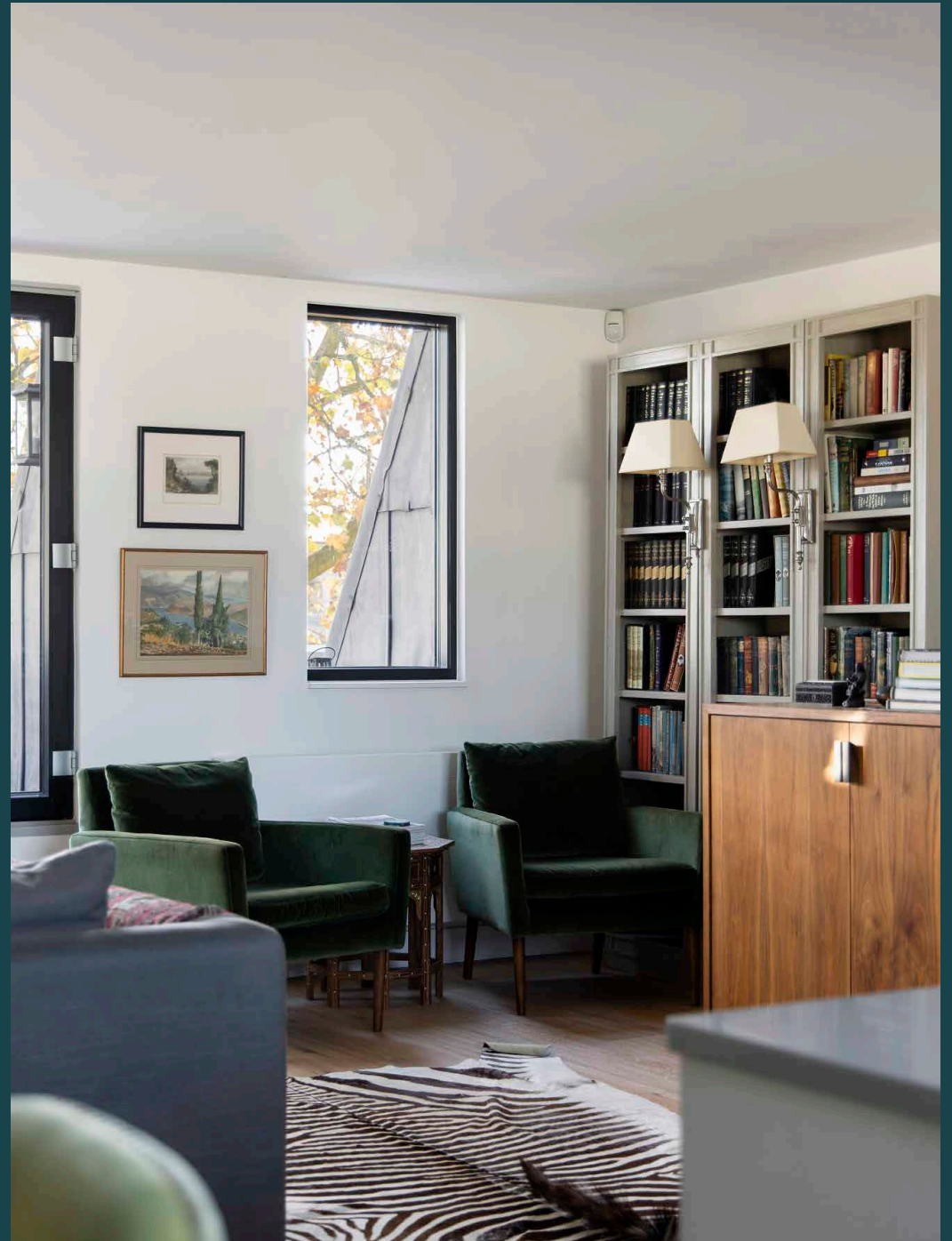


domus
stay.

Porchester Square

Bayswater W2

3 Bedrooms, 2 Bathrooms
For 6 guests



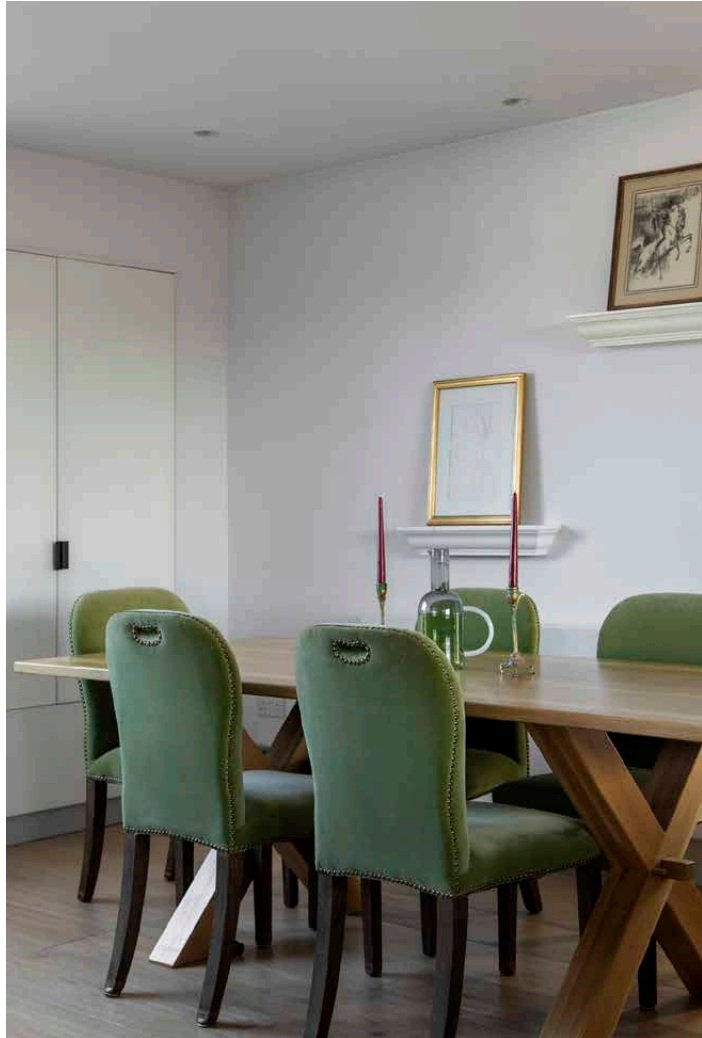


Light and proportion play out across the generous plan of this three-bedroom maisonette in Bayswater.

Bold accents pair with a considered palette to realise this modern, stylish home. Moments from bustling Westbourne Grove, it is an exemplar of inverted living. An open-plan kitchen and reception room takes the top floor. This calming and contemporary room is zoned by a white-painted girder that crosses the ceiling, with wooden floors and a pared-down aesthetic spanning the space.

South-facing windows illuminate a generous, minimalistic kitchen which comes complete with a large island and pendant lighting. On sunny days, make use of the wine chiller, slide back the folding doors and enjoy a glass on the roof terrace. Leafy views guaranteed. During colder months, prepare a feast in the kitchen and pull up a chair at the dining table, backdropped by intriguing art pieces. Or relax in the comfortable living area framed by a majestic forest scene. This space also features a reading nook with velvet armchairs.





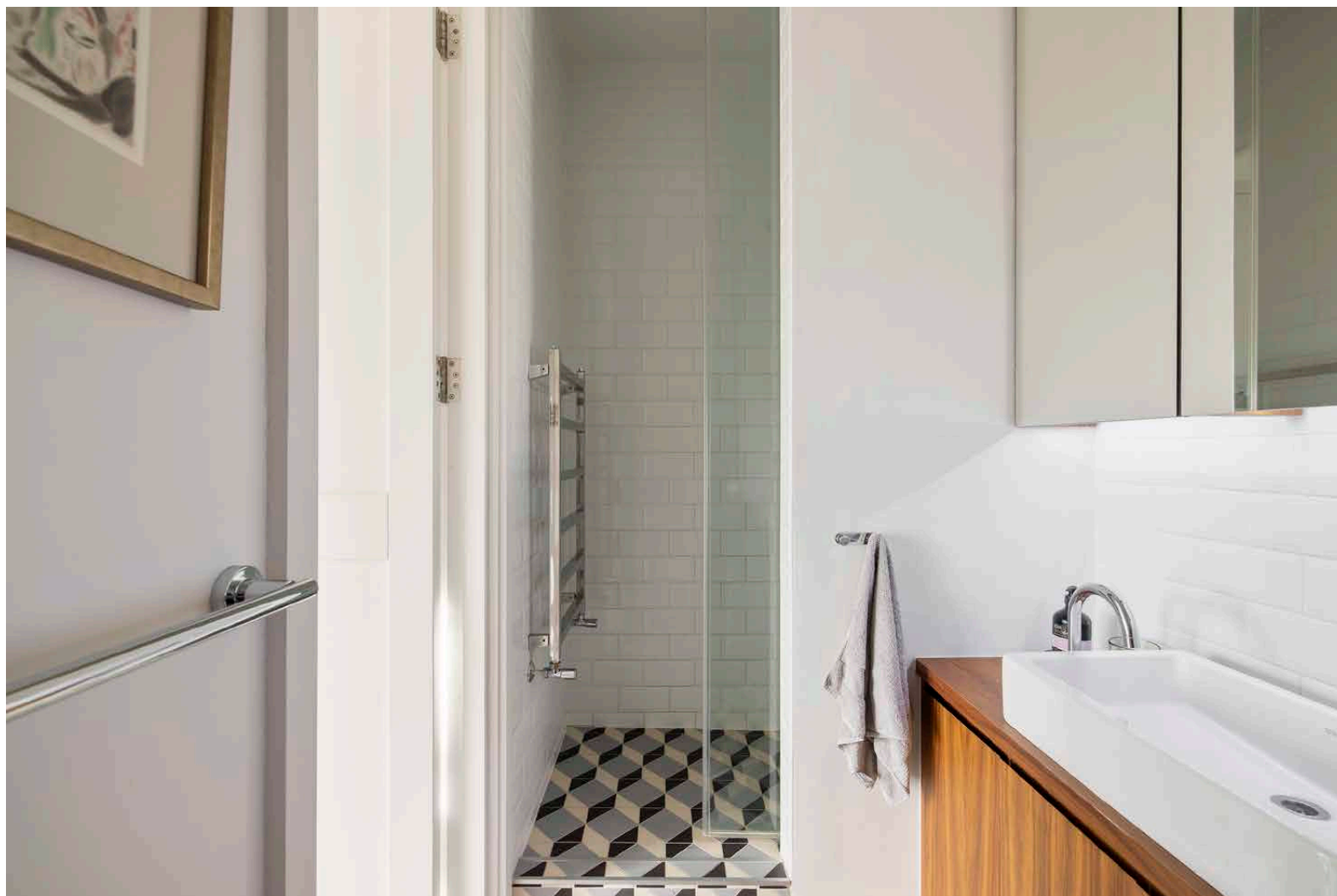


Downstairs, a generous principal bedroom suite features a bank of fitted wardrobes and a stylish en suite with geometric tiles and a console basin. A family bathroom has a rainfall shower and subway tiles. Two tranquil guest bedrooms feature sash windows and built-in storage – perfect for stashing treasures from the boutiques of nearby Notting Hill.



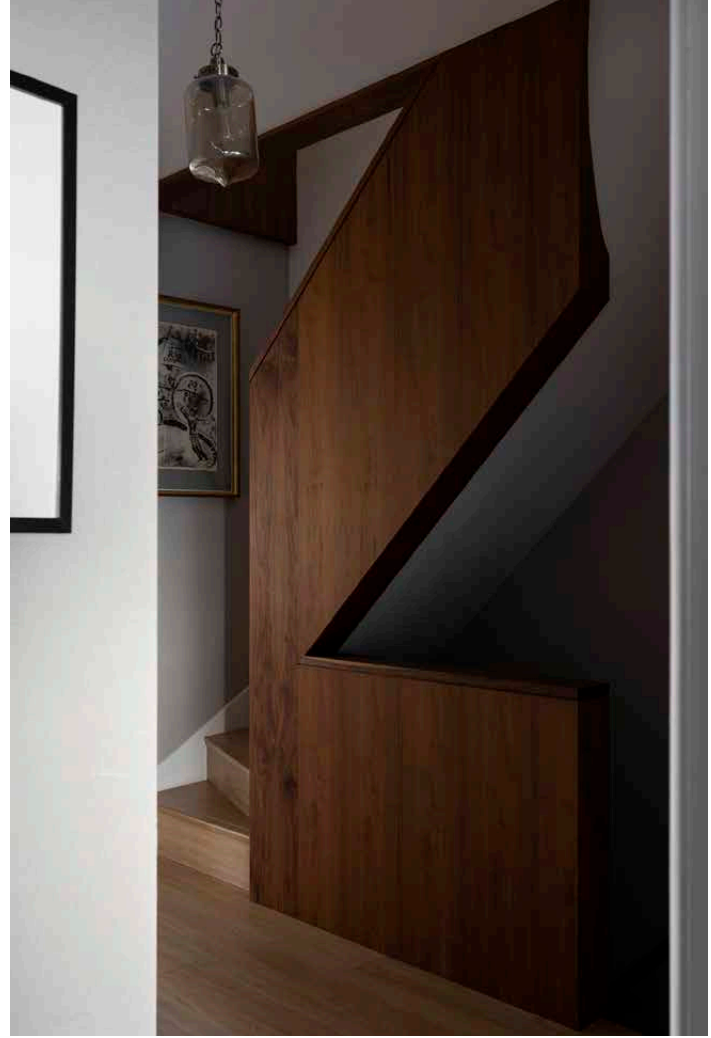
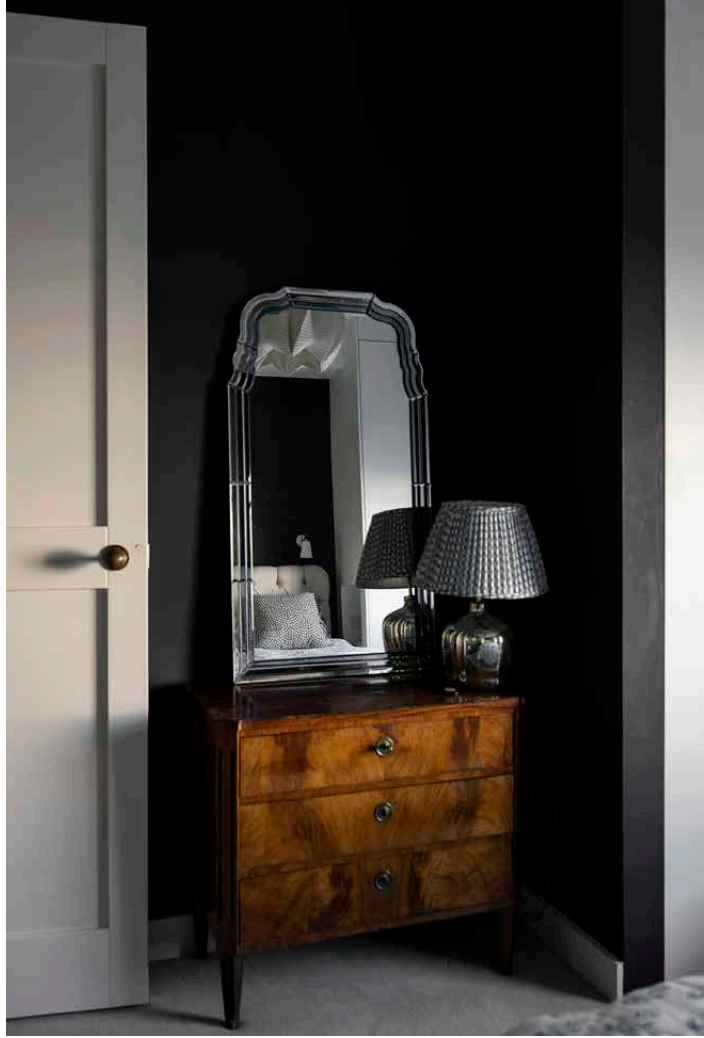
















LOCATION

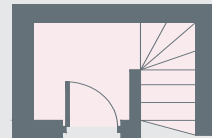
Porchester Square is a neighbourhood of timeless elegance.

Victorian façades and roofline balustrades pair with soaring trees and open spaces. Nearby Westbourne Grove is a classic Notting Hill shopping street. Pick up a coffee and a croissant at Sunday in Brooklyn then head to fashion boutiques Sézane and Sub Couture. Grab a treat at Melt or Libby's Sugar and Gluten Free Bakery. Enjoy an evening of fine dining at the Ledbury then amble home. For travel into central London and beyond, Paddington Station is fewer than 10 minutes away while Royal Oak Station is just five minutes' walk.

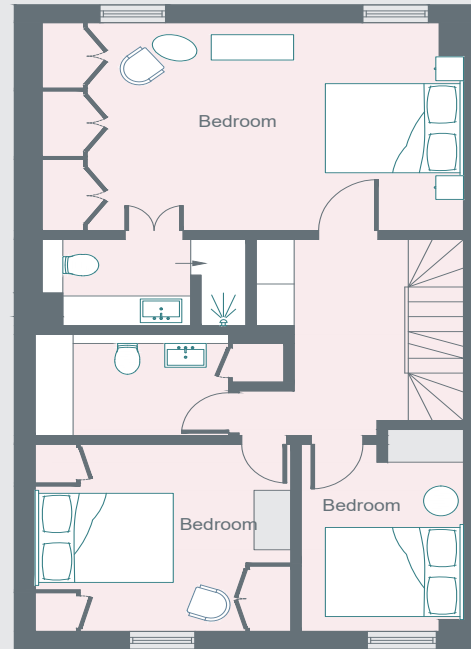


PROPERTY HIGHLIGHTS

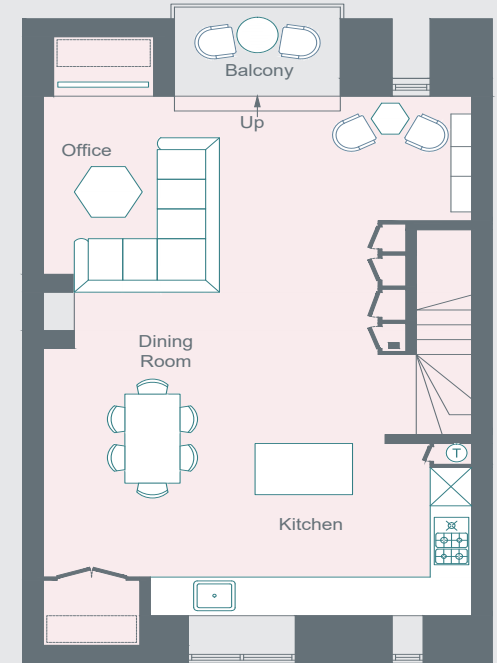
- Open-plan reception room
- Contemporary kitchen
- Master bedroom suite
- Two additional guest bedrooms
- Family bathroom
- Roof terrace
- City of Westminster



Second Floor



Third Floor



Fourth Floor

Approximate Area = 123.6 sq m / 1330 sq ft
Including Limited Use Area (1.4 sq m / 15 sq ft)
Surveyed and drawn in accordance with the International Property Measurement Standards (IPMS 2: Residential)
fourwalls-group.com 55553



domus stay.

Please don't hesitate to get in touch if you have any questions or require any further information.

hello@domusstay.com

+44 (0)20 8168 8880

Domus Stay provides the perfect combination of property, place and personal service for the world's most remarkable people. If you have any questions, or if we can help in any way, please contact us on the above number. Be it about a property you have, a property you want, dates to check or any special requirements you may need, we'd love a chat.

