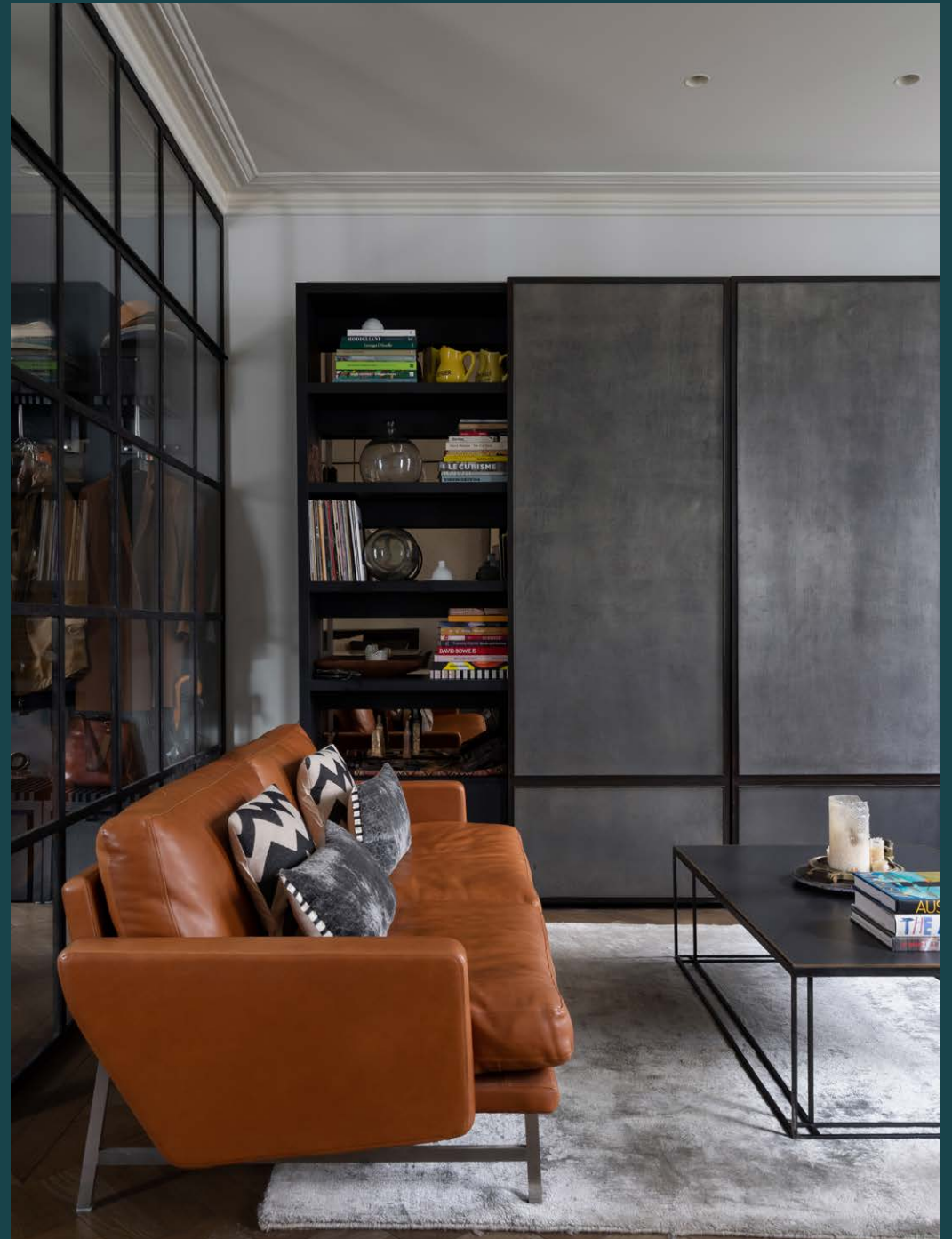


domus
stay.

Westbourne Gardens

Notting Hill W2

3 Bedrooms, 2 Bathrooms
For 6 guests





Bold tones and sophisticated styling bring an elevated edge to this three-bedroom triplex on one of the area's most sought-after garden squares.

Intertwining light, line and a dark palette, Westbourne Gardens sits in stark contrast to its refined and regal exterior. Spanning the top three floors of a traditional stucco-fronted terrace, interiors by Erin Barr Design bring an industrial edge to this enviably positioned enclave.

Entering on the second floor, deep hues set a relaxed, moody tone. A wall of Crittall glass encloses the home's social heart – a subtly zoned open-plan kitchen and reception room. Envisaged with entertaining in mind, rich navy cabinetry wraps around the rear of the room to form a kitchen that enables seamless socialising. Cooking feels effortless here, with integrated Gaggenau appliances and a picture window overlooking the leafy streets below. Paired with stainless steel countertops, a distressed mirrored backsplash reflects light through the space. Establishing an easy connection with the lounge, banquette seating fashions a relaxed setting for dining, drinks or socialising. Post-dinner, retire to the lounge, or ascend to the third-floor terrace to savour scenic vistas across the neighbourhood.



Interiors by Erin Barr Design bring a sleek industrial edge to the home's heritage framework.



“

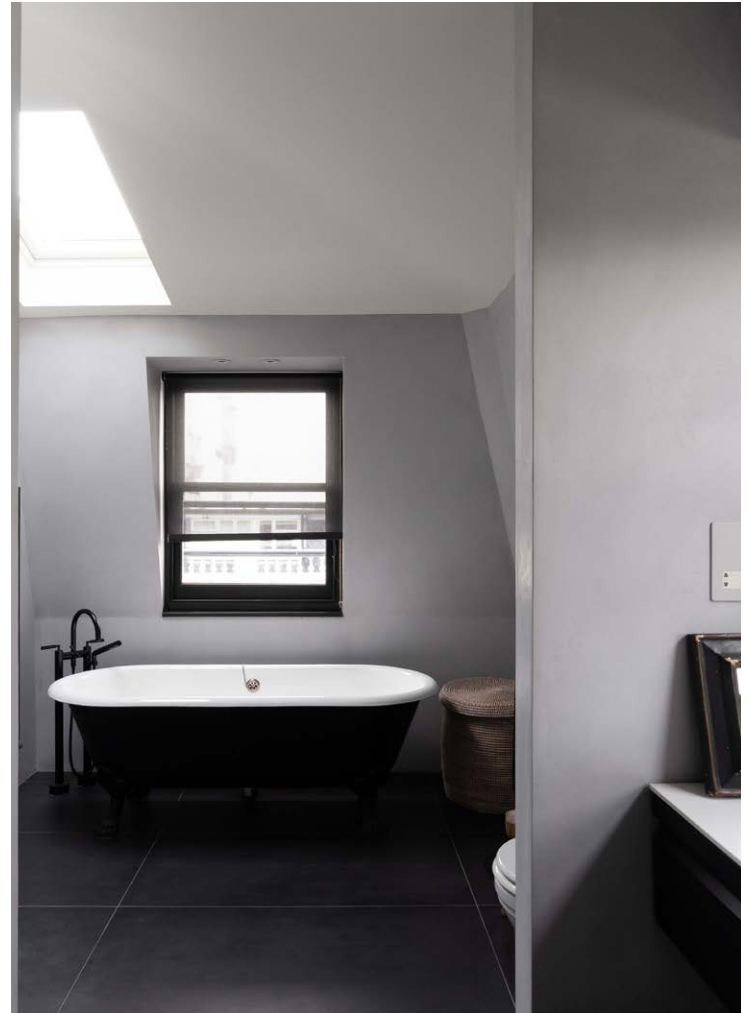
Envisaged with entertaining in mind, rich navy cabinetry wraps around the rear of the room to form a kitchen that enables seamless socialising.





Arranged across the third floor, two tranquil bedrooms come dressed in deep inky hues, one of which features a spa-like en suite shower room. Ascending past a floor-to-ceiling library wall, a sprawling third bedroom unfurls on the fourth floor. Considerately zoning the space, a partition establishes a dedicated area for study or work. To the other side, dual-aspect windows imbue the sleeping quarters with natural light, setting an uplifting tone come morning. Serene and sky-lit, an indulgent en suite bathroom is a quiet environment to unwind or start the day, complete with a freestanding bathtub and walk-in rainfall shower.











LOCATION

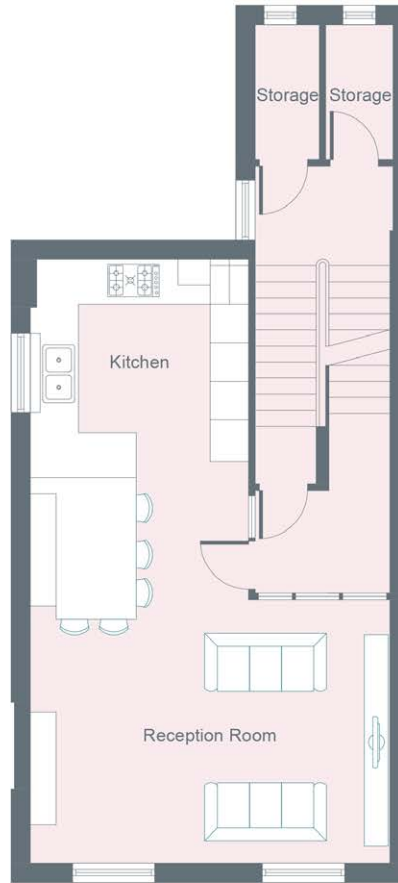
Nestled between the brunch spots and boutiques of Westbourne Grove and the thrum of Paddington, Westbourne Gardens enjoys an enviable west London location.

Pick up freshly baked bagels from 101 West Deli or start the day slowly with brunch at Beam. On Saturdays, peruse the market stalls on Portobello Road, then stroll along the picturesque streets of Little Venice. Come evening, choose between local favourites The Cow or Cépage[s] Wine Bistro and be home in a matter of minutes.



PROPERTY HIGHLIGHTS

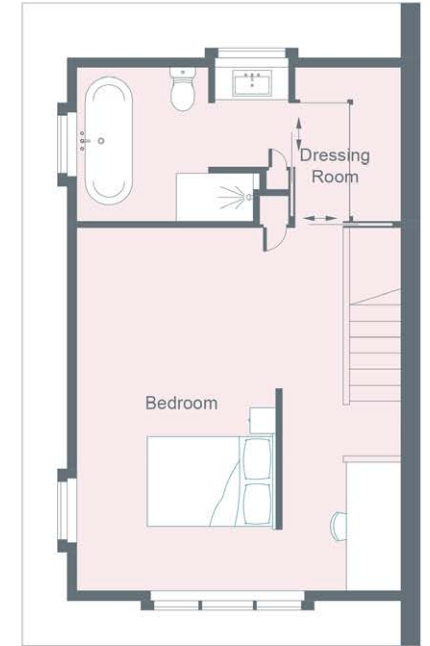
- Open-plan kitchen, dining and reception room
- Principal bedroom suite
- Guest bedroom suite
- Further guest bedroom
- Cloakroom
- Terrace



Second Floor



Third Floor



Fourth Floor



Please don't hesitate to get in touch if you have any questions or require any further information.

hello@domusstay.com

+44 (0)20 8168 8880

Domus Stay provides the perfect combination of property, place and personal service for the world's most remarkable people. If you have any questions, or if we can help in any way, please contact us on the above number. Be it about a property you have, a property you want, dates to check or any special requirements you may need, we'd love a chat.

