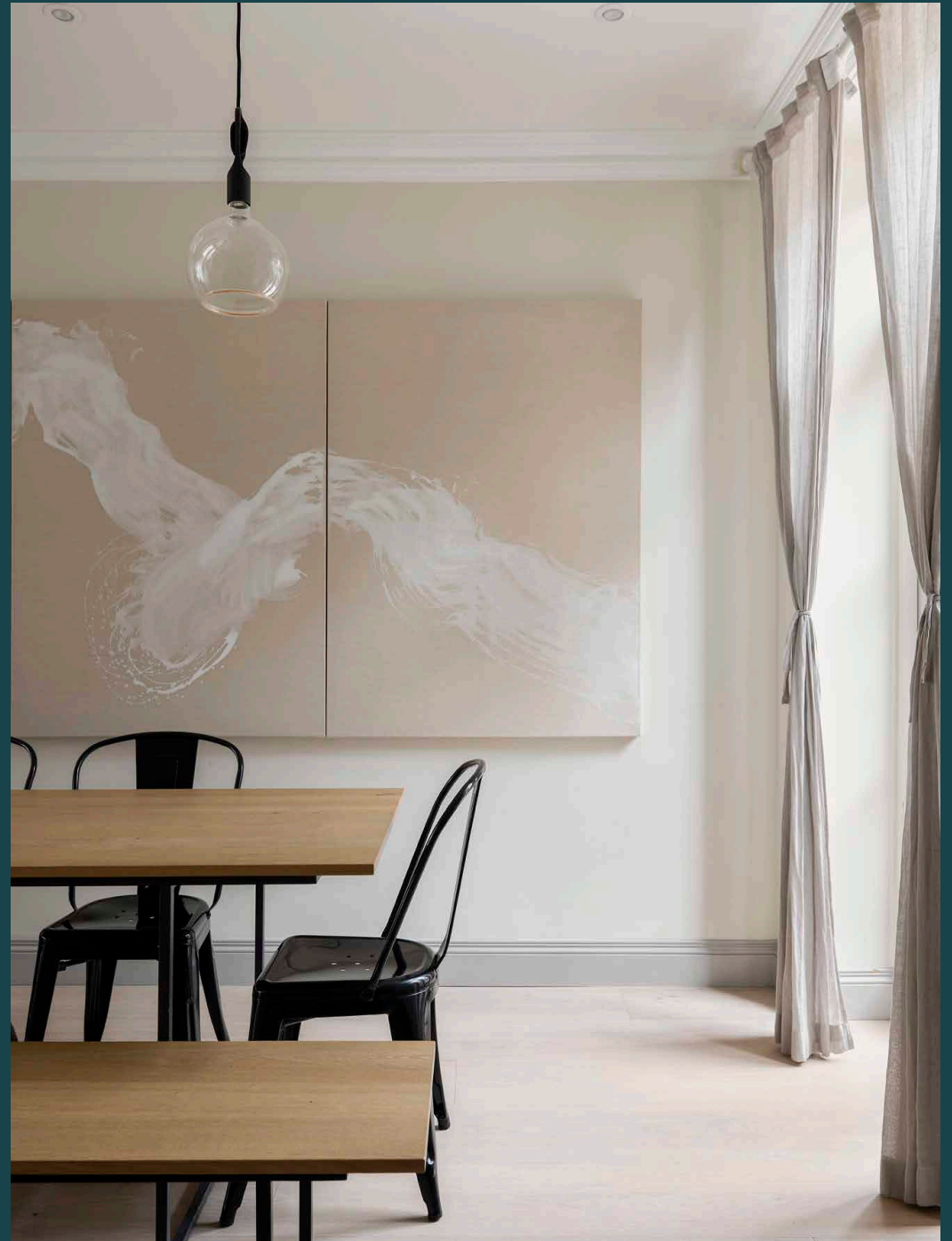


domus
stay.

Portobello Road

Notting Hill W11

2 Bedrooms, 2 Bathrooms
For 4 guests





At the heart of Notting Hill's most iconic street, this two-bedroom apartment is minimalist and considered in design.

Portobello Road is one of the most renowned street markets, filled with independent traders and eclectic stalls for more than two miles. Overlooking this colourful stretch is a serene two-bedroom apartment, a quiet retreat in the middle of this energetic Notting Hill enclave.

Spread across the first floor, period architecture is approached with a modern eye. A refined selection of contemporary artwork makes a feature of traditional proportions, while a spacious layout is configured with socialising in mind. Pale walls and wood floors make a soothing first impression as you enter the open-plan reception room. Swathes of natural light are filtered through large bay windows with a welcoming sitting area positioned adjacent. The other half of the room is given over to cooking and dining. Runs of pebble-toned cabinetry and smooth marble worktops make for a stylish culinary setting, while a wooden dining table is illuminated by pendant lights.



There's access to two separate outdoors areas from this room. Beyond the bay windows, a balcony gazes directly towards the jewel of Portobello Road – the Electric Cinema.

“

Watch over the bustle of this vibrant thoroughfare from the balcony; then be part of the thrum in a matter of moments.







The streamlined flow between the living and dining areas – and further out to the terrace – makes for a convivial social setting.



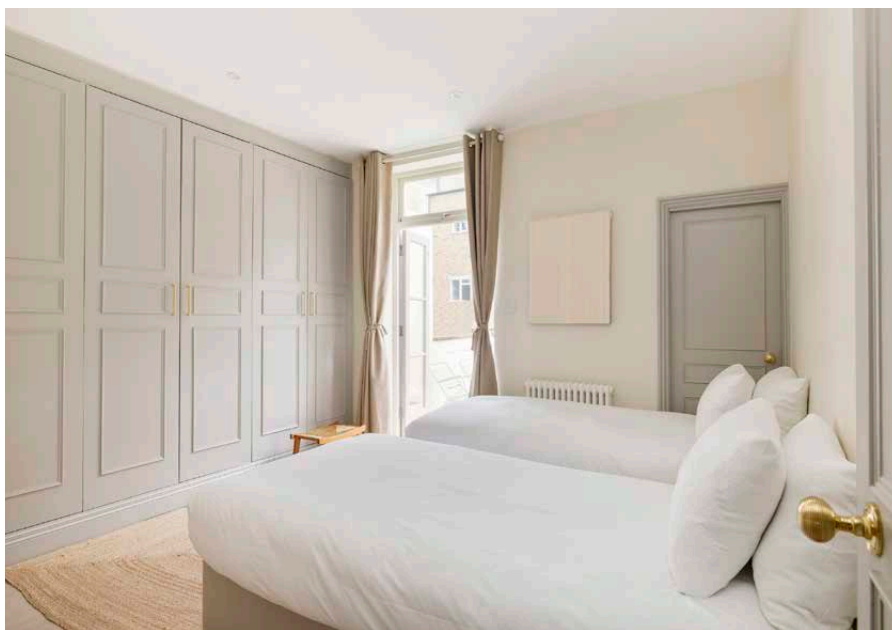
Elegant minimalism ensues in the two bedrooms. The principal suite is gently lit through a large bay window, with a wicker armchair poised next to the glass for quieter interludes. Full-height wardrobes are stylishly finished in a soft grey hue with gilded handles. Its en suite bathroom is wrapped with oversized marble tiles, accentuated with brushed metal hardware.



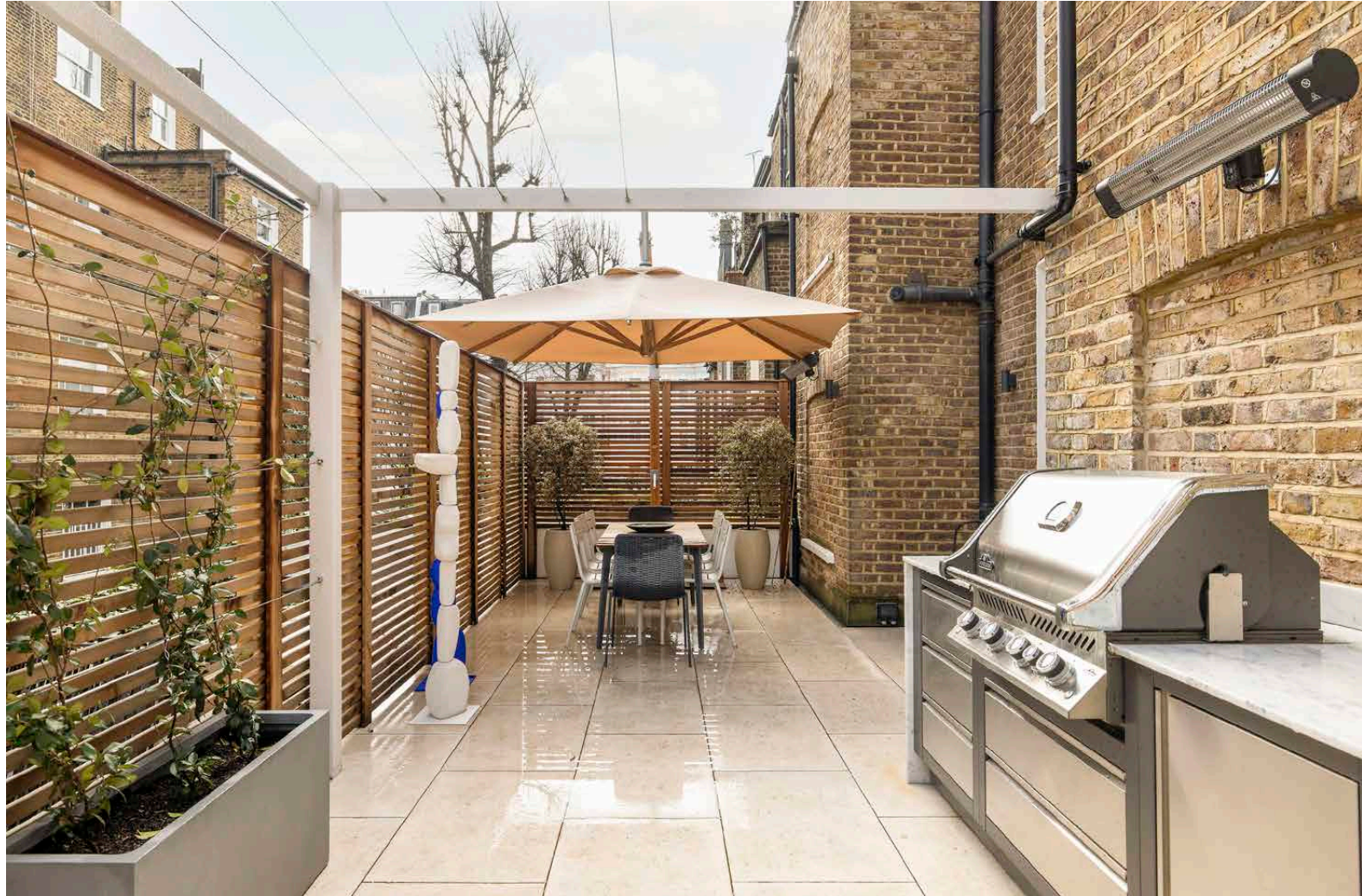




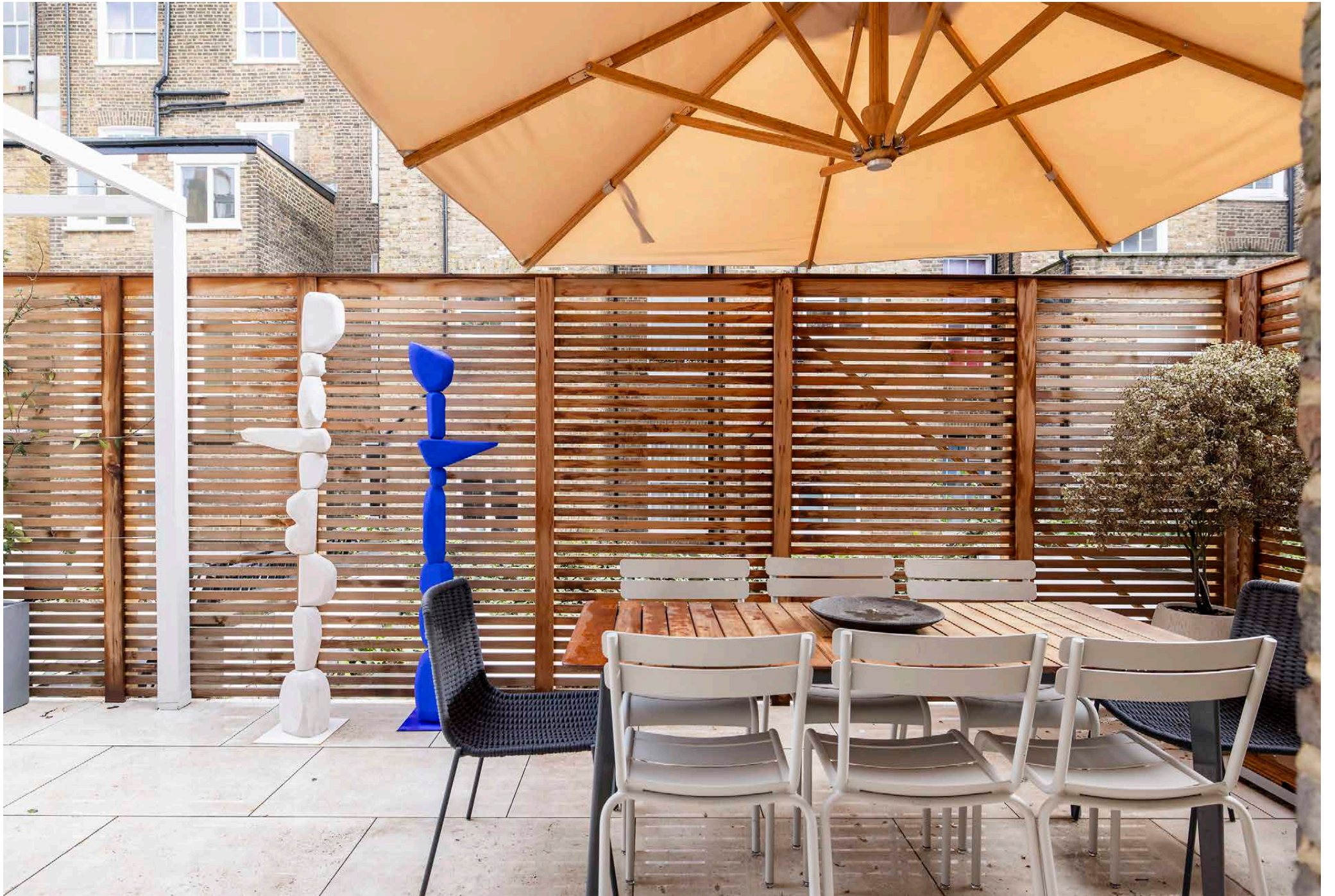
A twin guest bedroom enjoys direct access to the private terrace and is served by a contemporary bathroom finished with granite-toned stone tiles and a walk-in shower.







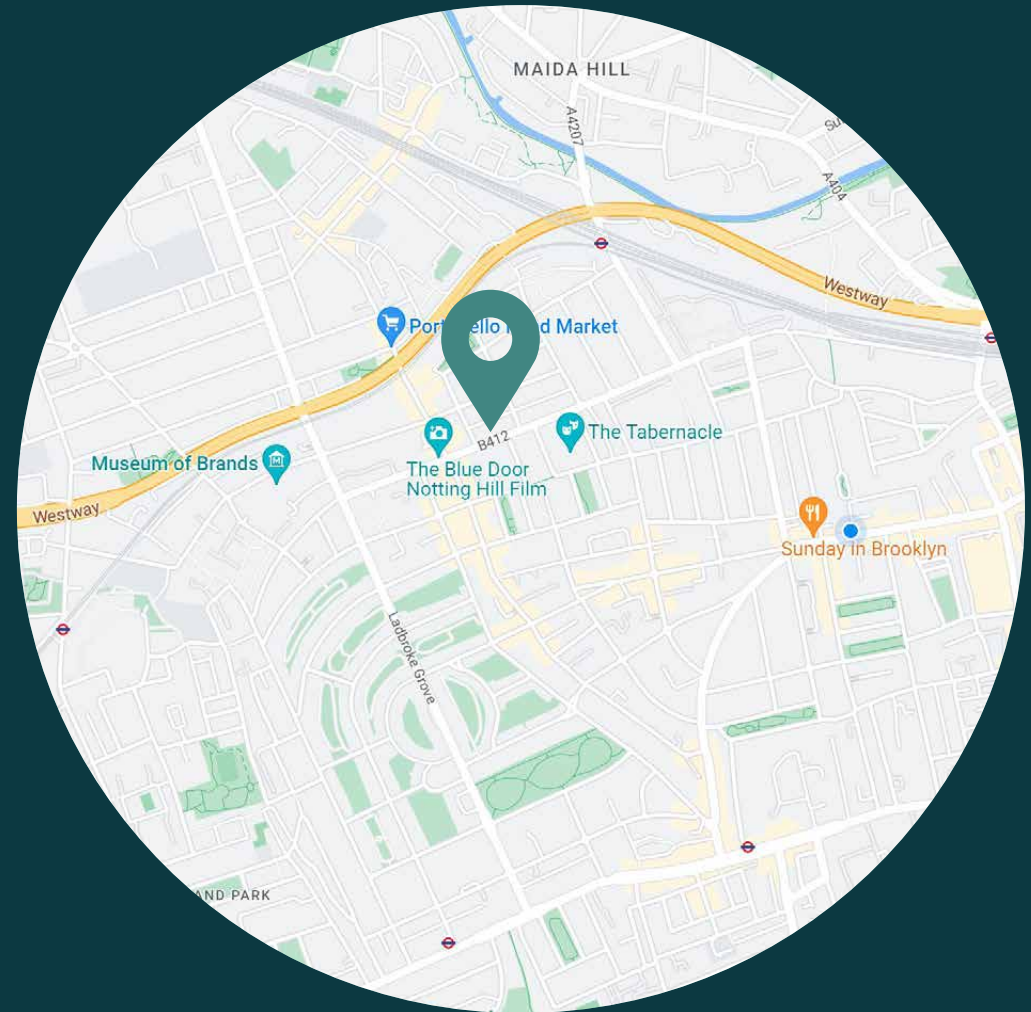
From the kitchen and dining area, French doors open onto a roof terrace. High timber fencing offers privacy for summertime entertaining, making use of the high-spec barbecue.



LOCATION

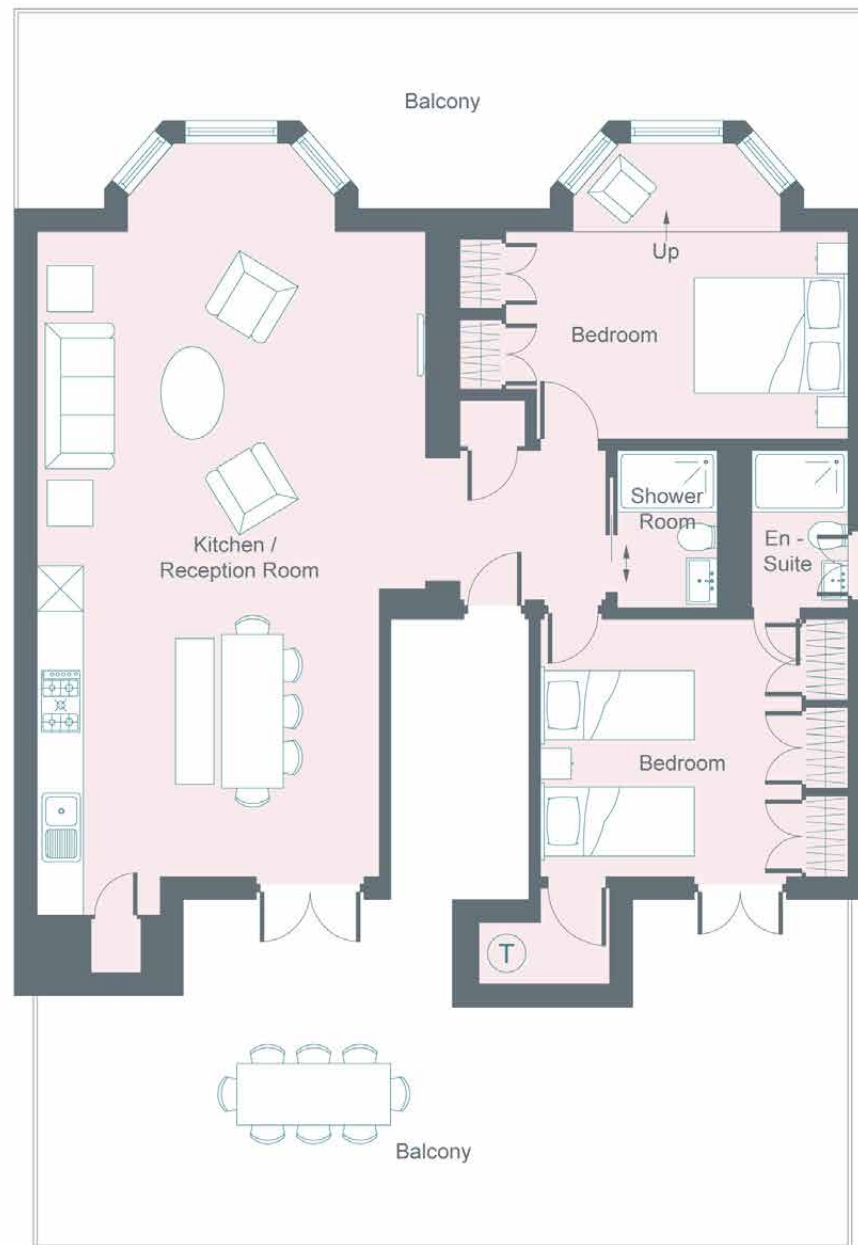
A centre for antiques traders, vintage boutiques and global eateries, Portobello Road is the beating heart of this west London neighbourhood.

One of the oldest working cinemas in Britain, the Electric Cinema takes you back in time with its leather armchairs, footstools and tables for food and drink. Venture up to Golborne Road, where Moroccan fish grills and local bakeries are frequented by a neighbourly crowd. Or wander down Westbourne Grove to refresh your wardrobe at Sézane or Reformation. Fine dining is in abundance, from Michelin starred Core by Clare Smyth to local gastropub The Cow, followed by a late night tipple at Gold.



PROPERTY HIGHLIGHTS

- Open-plan kitchen, reception and dining room
- Principal bedroom suite
- Twin bedroom suite
- Private balcony
- Roof terrace
- Royal Borough of Kensington & Chelsea



First Floor

Approximate Area = 89.9 sq m / 968 sq ft

Drawn for Illustration Purposes Only

fourwalls-group.com 57183

domus stay.

Please don't hesitate to get in touch if you have any questions or require any further information.

hello@domusstay.com

+44 (0)20 8168 8880

Domus Stay provides the perfect combination of property, place and personal service for the world's most remarkable people. If you have any questions, or if we can help in any way, please contact us on the above number. Be it about a property you have, a property you want, dates to check or any special requirements you may need, we'd love a chat.

