

domus
stay.

Take Courage House

Borough Market SE1

5 Bedrooms, 4 Bathrooms
For 10 guests





A gateway to London's most iconic market, this five-bedroom home is steeped in history.

Haute design with a traditional twist, this characterful five-bedroom family home is as dynamic as its Central London location. Next to the renowned Borough market and on the doorstep of the new development of Borough Yards, this townhouse has a rich history as part of the former Anchor Brewery. Past secure gates – there are two entrances to this property – enter on the Bisazza-tiled ground floor, separated between an eat-in kitchen, a formal dining room and a steel-framed extension that overlooks the private garden. Open doorways maximise light and flow, with original sash windows drinking in the morning sun from the dining area and golden hour casting a soft glow through the extension and into the kitchen.

Design is considered here – a high-spec Rangemaster, boiling water tap and sculptural lighting. Note the way the cabinetry is crafted to echo the gentle folds of the high skirting boards in the opposite room. Lighting is atmospherically layered, with a striking bespoke Serge Mouille chandelier, Tom Dixon wall pendants and under cabinet dimmers that reflect off the patterned Victorian tiles below. Just beyond, wraparound windows create the perfect spot to settle with a tippie as you look down into the outdoor space. For lively evenings, gather friends in the dedicated dining room with its classic artwork, heritage fireplace and a Petite Friture Vertigo pendant light.



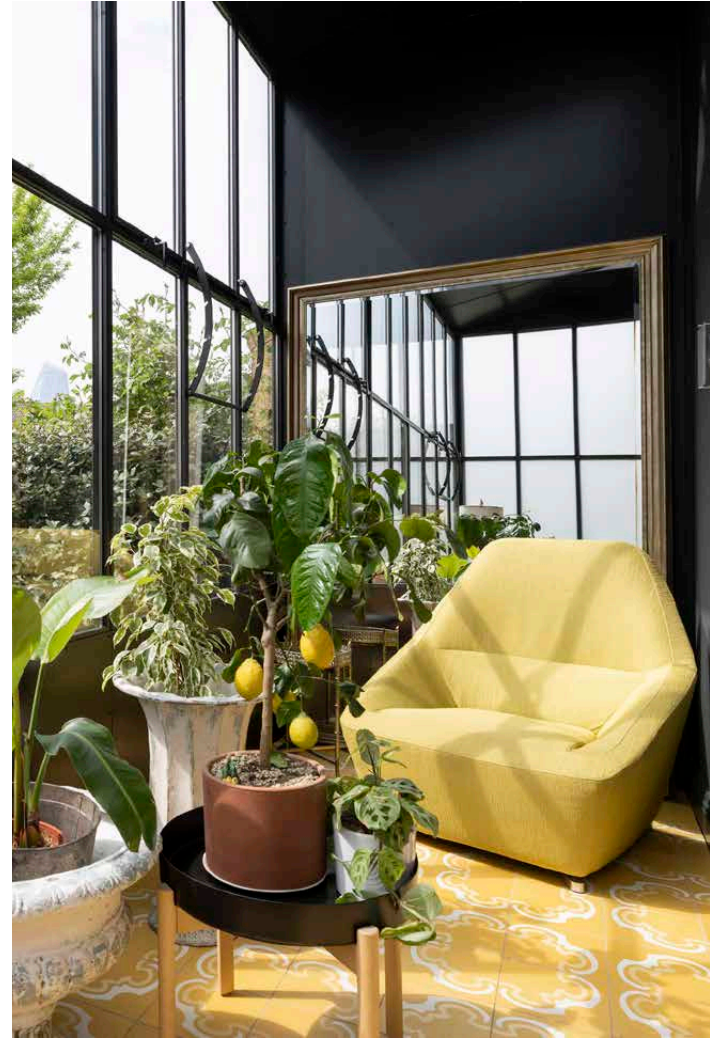


Park Street is steeped in a heritage that pulls together the stories of some of Britain's most famous figures, from Shakespeare and Charles Dickens to Margaret Thatcher. Formerly a part of Anchor Brewery, it was later taken over by Courage Brewery – the source of the 'Take Courage' slogan emblazoned on its wall.

“

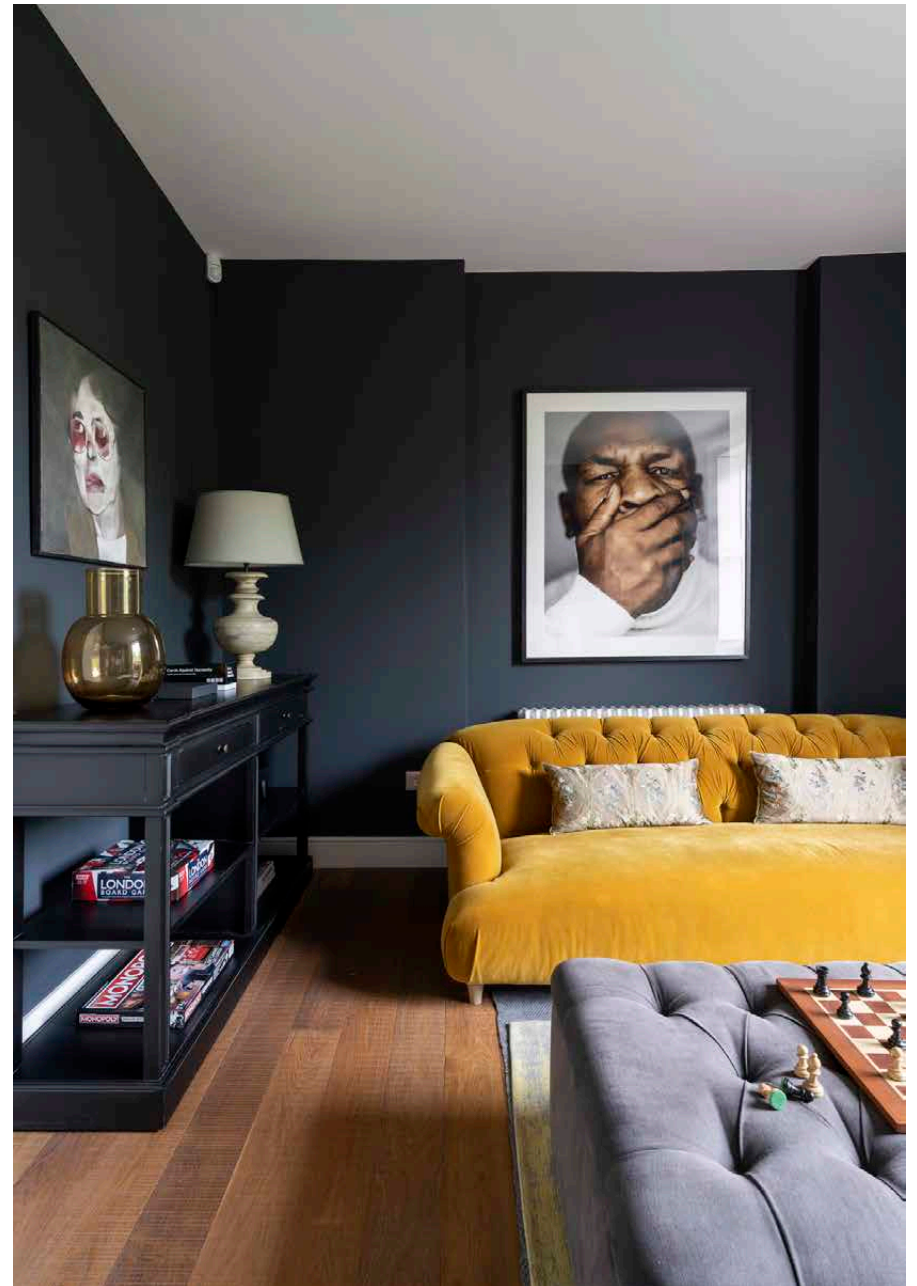
Design credentials are endless here. From Tom Dixon to Serge Mouille, furnishings and details are thoroughly considered.





“

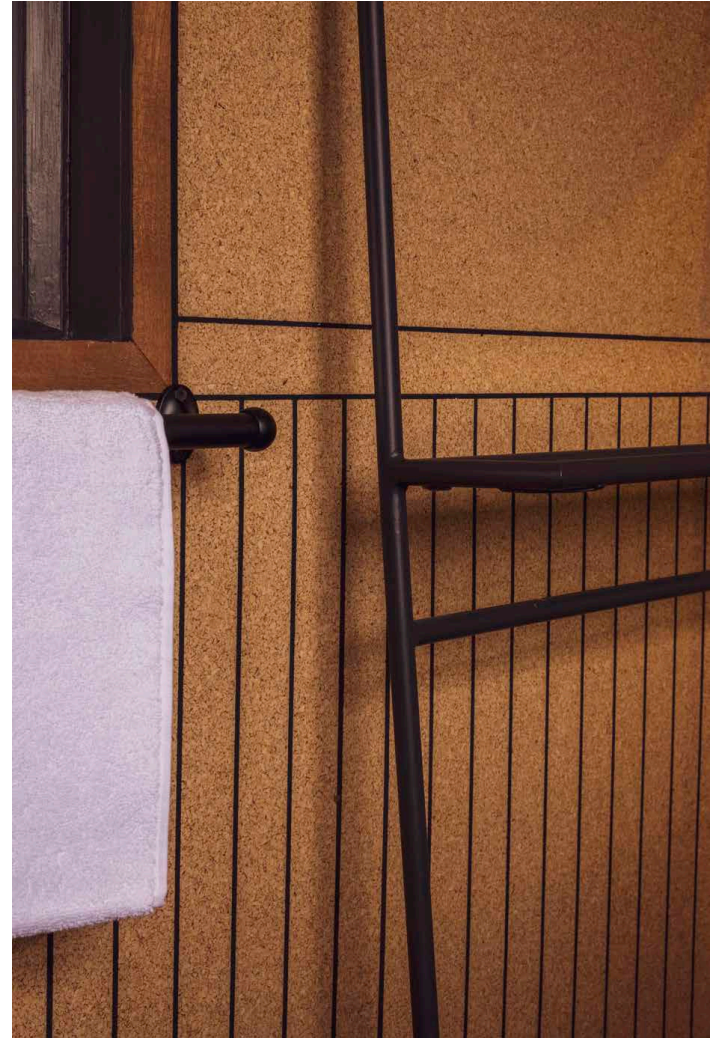
A family home elevated
by exceptional design and
character.





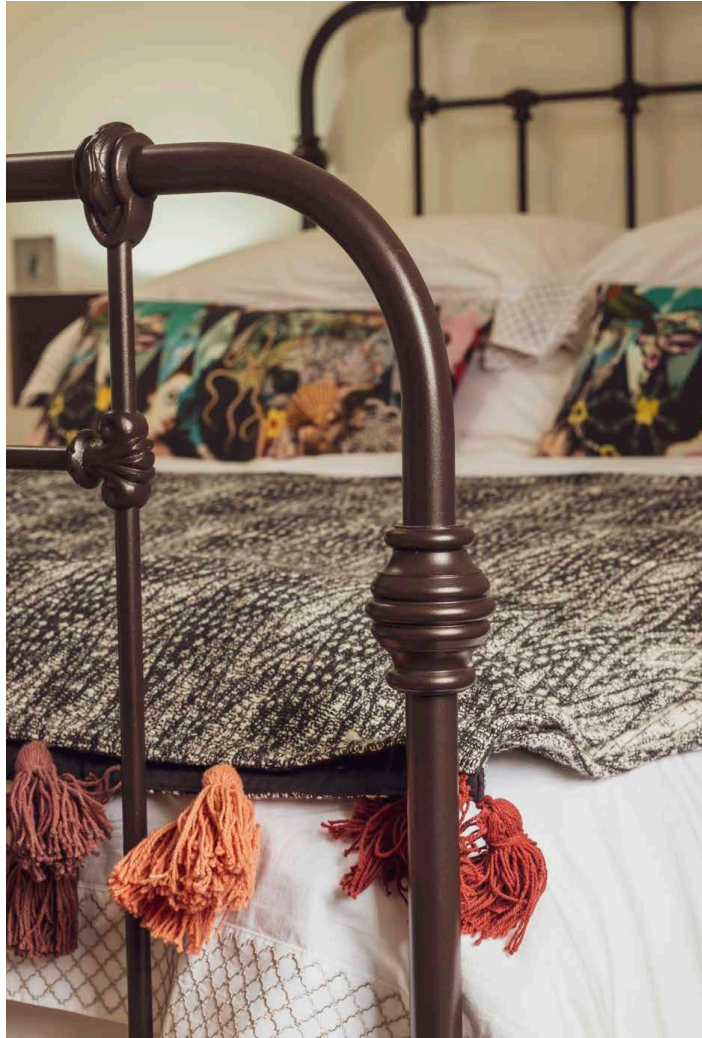
Bedrooms are divided between the upper storeys and the lower floor. In the master, a bespoke headboard, carved from spruce, and a feature fireplace makes it a lovely room to curl up under soft sheets. It shares an innovatively designed bathroom, where walls are crafted from cork. Wake up well under the glass-framed rainfall shower. Another bedroom is carpeted with one-hundred-per cent wool and has a playful mezzanine above – a hideaway for children perhaps. On the lower storey, a rustic-style bedroom dressed in Missoni wallpaper and tactile bathroom where an antique bread oven recalls its old-world history. From here, another entrance leads to the garden.



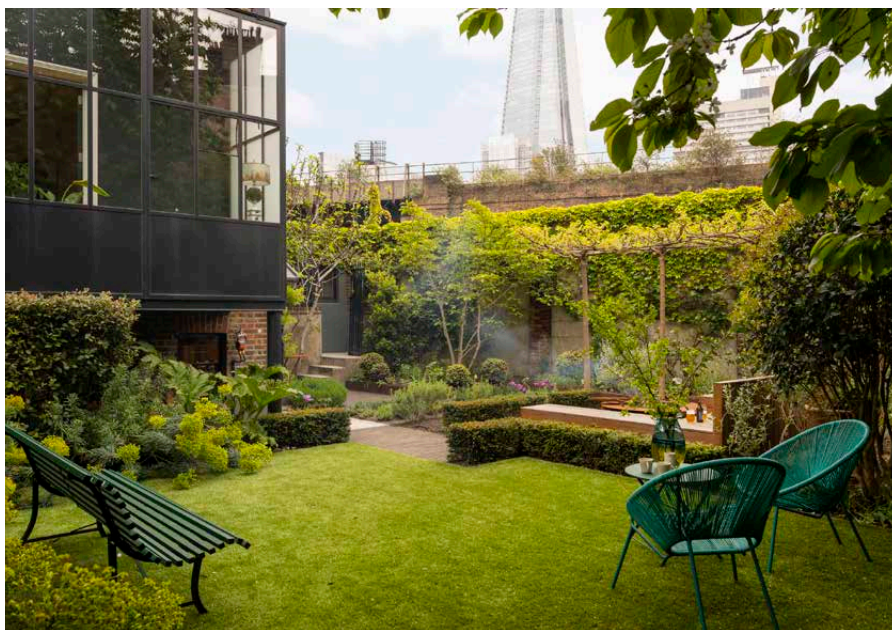








There's an away-from-it-all feel to the outdoor space, with a beautifully-crafted wooden bench seating, a leafy canopy and aromatic herbs. Light the fire pit that doubles as a barbecue, switch on the subtle accent lighting and let social evenings run into the late hours. The iconic Shard is your backdrop here.









LOCATION

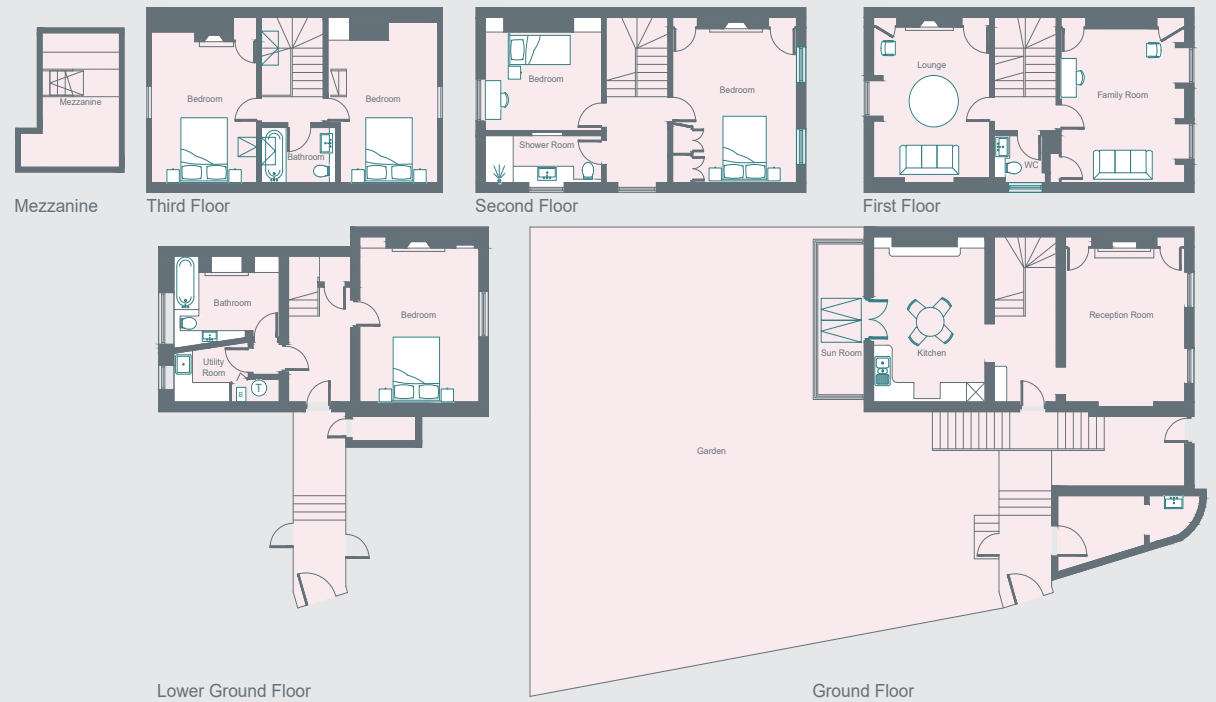
Spend days between market stalls, the riverside and Borough Yards.

Around the corner from Borough Market, Park Street makes it easy to explore London's history – railway arches, former breweries, warehouse spaces and the market itself which dates back to the 18th century. A showcase of organic, sustainable food and community, its vendors run stalls that serve distinct dishes. Also on this road, two artisan coffee shops; the Gentlemen Baristas and the Monmouth Coffee Company. Grab one to go and stroll along the Thames. Across the road, one of London's most talked-about developments; Borough Yards. With plans for an Everyman Cinema and Barrafina restaurant as well as an array of shops and bars, the best of London is on your doorstep.



PROPERTY HIGHLIGHTS

- Reception room
- Contemporary kitchen and sun room
- Two further living rooms
- Principal bedroom
- Four further bedrooms
- Three bathrooms
- Utility room
- Private garden
- London Borough of Southwark



Approximate Area = 267.1 sq m / 2875 sq ft
Outbuildings = 9 sq m / 97 sq ft
Total = 276.1 sq m / 2972 sq ft (Including Mezzanine)
Including Limited Use Area (10.5 sq m / 113 sq ft)
Surveyed and drawn in accordance with the International Property Measurement Standards (IPMS 2: Residential)
fourwalls-group.com 805802



domus
stay.

Please don't hesitate to get in touch if you have any questions or require any further information.

hello@domusstay.com

+44 (0)20 8168 8880

Domus Stay provides the perfect combination of property, place and personal service for the world's most remarkable people. If you have any questions, or if we can help in any way, please contact us on the above number. Be it about a property you have, a property you want, dates to check or any special requirements you may need, we'd love a chat.

