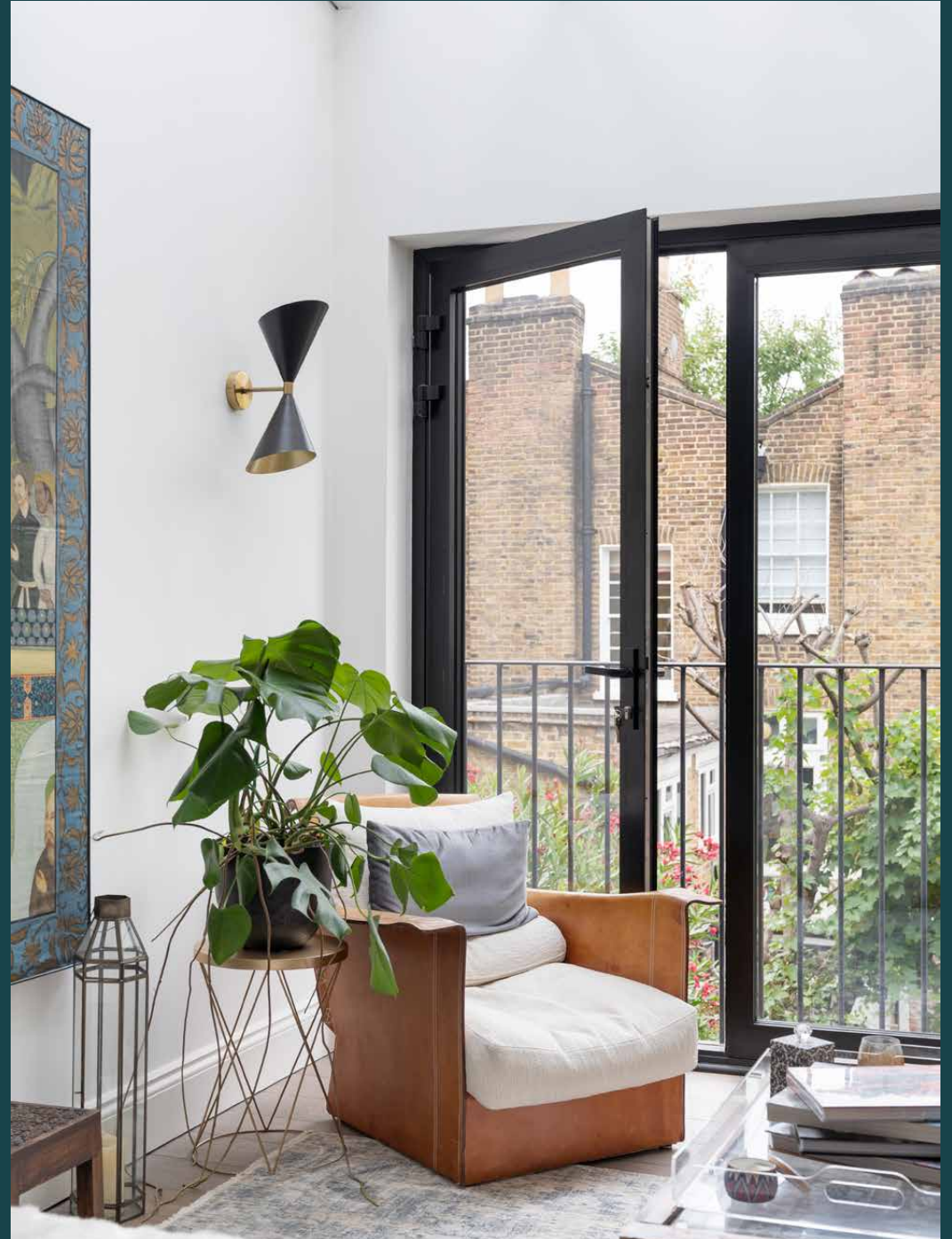


domus
stay.

Campden Hill Road

Notting Hill W8

2 Bedrooms, 2 Bathrooms
For 4 guests





A characterful, calming two-bedroom townhouse. Four floors of considered spaces styled with an eclectic palette.

This is vertical living at its best.

Behind a monochromatic façade sits a stylish home. This inviting two-bedroom townhouse is located on Campden Hill Road – a quiet enclave a stone’s throw from Notting Hill Gate. Arranged over four floors, contemporary interior design ties myriad spaces together.

The open-plan kitchen and dining room features whitewashed cabinetry and a waterfall island, creating a tranquil atmosphere. Sip a coffee at the seated bar area in the morning following an evening’s entertainment with friends. A table with seating for eight is illuminated by a cluster of pendant lights while exposed brick creates a textural backdrop for every meal. Tiled floors flow back through the kitchen and into a minimalist living area. Four Crittall doors lead out onto a leafy patio garden. This secluded, wood-lined space is perfect for casual alfresco dining.

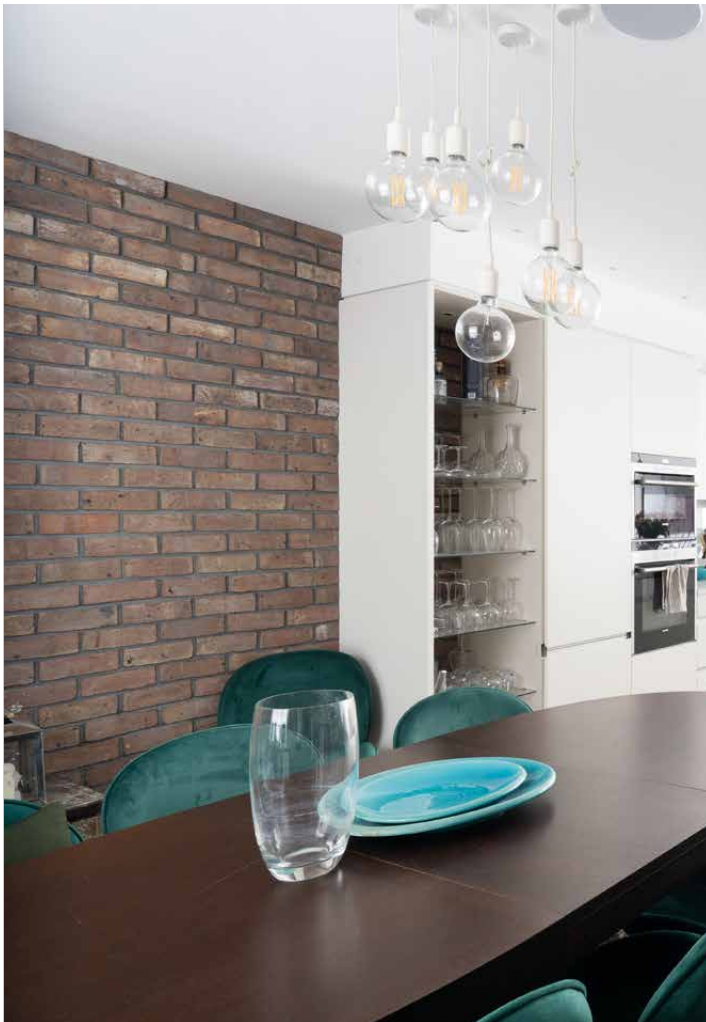
Upstairs, the eclectic secondary reception room is a quirky, characterful space with gilded light fittings and statement art pieces. Light floods the room through a generous skylight. Leave the doors open and embrace the inside-outside effect.

Head downstairs to work out in the gym, bake in the sauna, then cool off under the rain shower in the family bathroom. A guest bedroom features neutral tones, considered touches and glass doors leading to a private terrace.



“

Worldly and warming, characterful artwork and unique design choices create an inviting space.





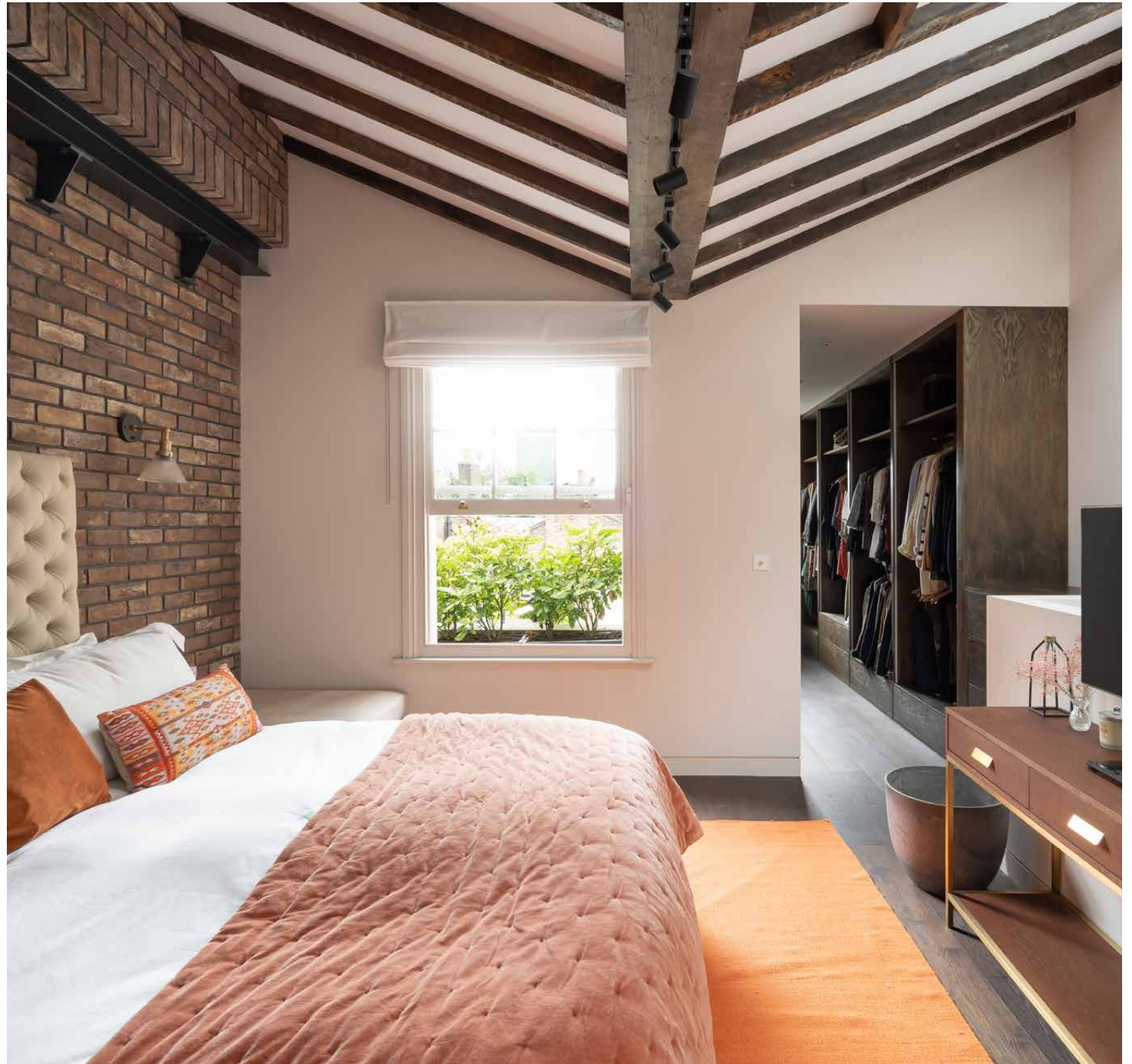
Space for the entire family, and friends too.







Vaulted ceilings and exposed beams create a voluminous feel to the principal bedroom. Stash newfound treasures from Portobello Road in the walk-in wardrobe then collapse into plush bedding. A serene ensuite bathroom features a walk-in rain shower and a freestanding bath. A twin vanity crafted of marble creates a sense of opulence while burnished brass taps add a steampunk twist.















Work out, relax, then cool off in the basement wellness suite.

LOCATION

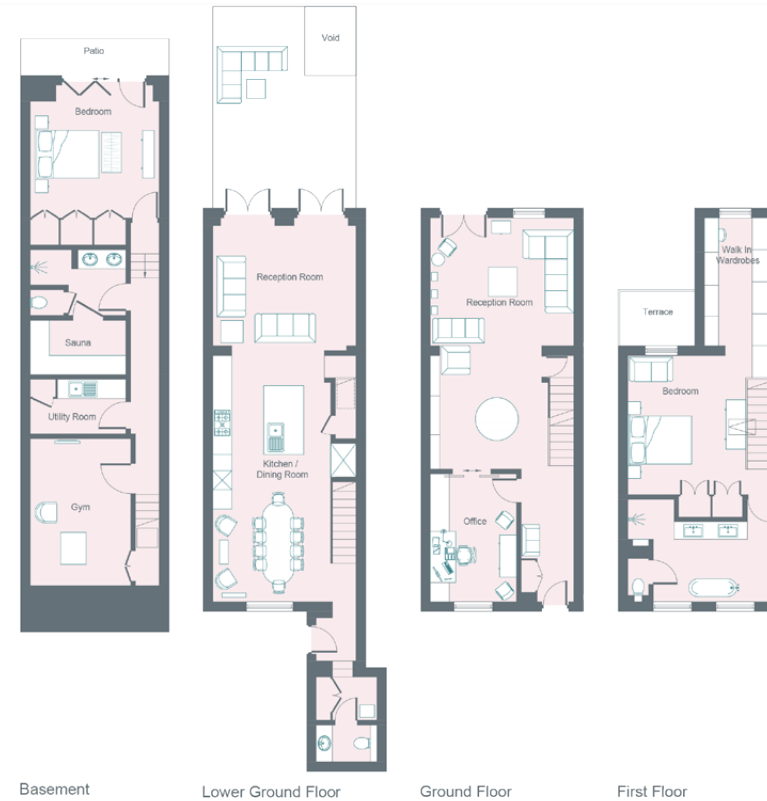
Moments from Notting Hill Gate, Campden Hill Road has a quiet, suburban feel while being close to some of west London's best shops and restaurants.

Brunch at Sunday in Brooklyn, peruse the boutiques and antiques of Portobello Market then dine at Gold. Or book ahead and experience the gastronomical institution that is The Ledbury. For summertime strolls, Hyde Park is 10 minutes away. Alternatively, hop on the tube at Notting Hill Gate to explore central London and beyond.



PROPERTY HIGHLIGHTS

- Two reception rooms
- Modern kitchen
- Patio garden
- Gym and sauna
- Study
- Principal bedroom suite
- One further bedroom
- Two bathrooms
- Royal Borough of Kensington & Chelsea



Approximate Area = 160.3 sq m / 1725 sq ft
Basement = 68.3 sq m / 735 sq ft
Total = 228.6 sq m / 2460 sq ft

Surveyed and drawn in accordance with the International Property Measurement Standards (IPMS 2: Residential)
fourwalls-group.com 895302





Please don't hesitate to get in touch if you have any questions or require any further information.

hello@domusstay.com

+44 (0)20 8168 8880

Domus Stay provides the perfect combination of property, place and personal service for the world's most remarkable people. If you have any questions, or if we can help in any way, please contact us on the above number. Be it about a property you have, a property you want, dates to check or any special requirements you may need, we'd love a chat.

