

domus
stay.

Chilworth Street IV

Bayswater W2

1 Bedroom, 1 Bathroom
For 2 guests





Classic meets contemporary in this majestic third-floor home. A calming retreat, this one-bedroom apartment is a stepping stone to the vibrant capital.

Inside an elegant Grade II listed Victorian block is a considered home. An open-plan kitchen and living area features neutral tones and thoughtful design decisions. Clean-lined cornicing creates a sense of understated grandeur. Cook breakfast using integrated appliances then dine on the built-in bench seating. Large, southeast-facing windows fill the space with natural light.

Swedish chevron flooring flows into a comfortable, rear-facing bedroom. This quiet refuge has fitted storage and views all the way down Gloucester Mews West. The bedroom and the reception room both enjoy original Victorian feature fireplaces. A stylish, tiled bathroom has a walk-in rainfall shower and modern fittings.



“

An open-plan kitchen and living area features neutral tones and thoughtful design decisions.



The bedroom and the reception room both enjoy original Victorian feature fireplaces.



“

Swedish chevron flooring flows into a comfortable, rear-facing bedroom.



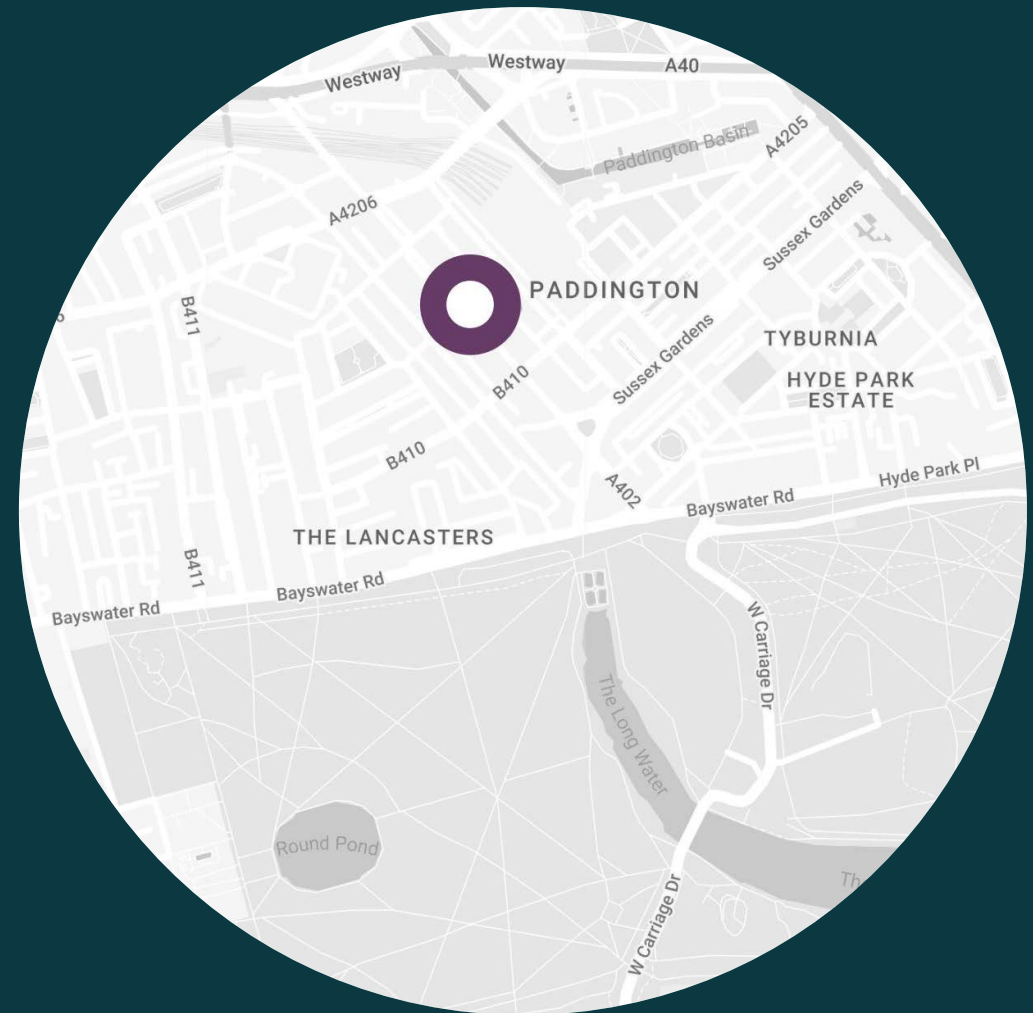


A stylish, tiled bathroom has a walk-in rainfall shower and modern fittings.

LOCATION

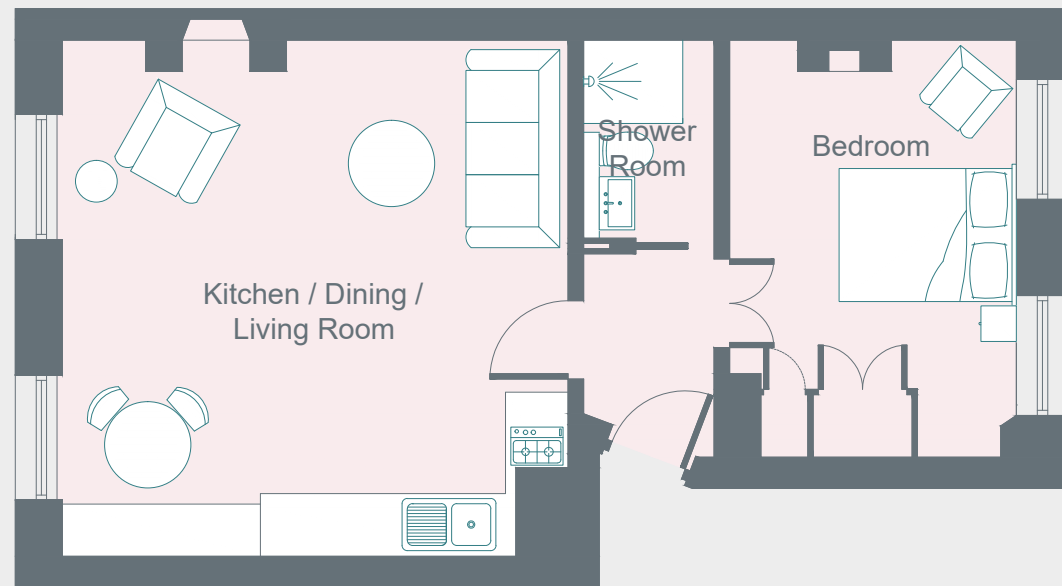
An elegant road in Bayswater, Chilworth Street provides seamless access to London's West End - the city's bustling theatreland.

Closer to home, enjoy dinner with a show at operatic restaurant Bel Canto. Further afield, two Michelin-starred Le Gavroche beckons. However, foodies need not venture far. Three floors below in the same block, gastropub The Cleveland Arms serves a seasonal menu showcasing the best of British produce. For retail therapy, the boutiques of Westbourne Grove are nearby. Meanwhile, the manicured lawns and wooded walks of Hyde Park are just five minutes away.



PROPERTY HIGHLIGHTS

- Open-plan kitchen and reception
- One bedroom
- One bathroom
- Fitted storage
- Grade II listed building
- City of Westminster



Third Floor

domus
stay.

Please don't hesitate to get in touch
if you have any questions or require
any further information.

hello@domusstay.com

+44 (0)20 8168 8880

Domus Stay provides the perfect combination of property, place and personal service for the world's most remarkable people. If you have any questions, or if we can help in any way, please contact us on the above number. Be it about a property you have, a property you want, dates to check or any special requirements you may need, we'd love a chat.

