

domus
stay.

Blenheim Crescent

Notting Hill W11

2 Bedrooms, 2 Bathrooms
For 4 guests





Contemporary design and art-filled interiors. This two-bedroom duplex apartment offers a striking juxtaposition to its traditional exterior.

A red-brick and stucco façade serves as an elusive introduction to Artisan House, where a heritage exterior conceals a home with exceptional style. Originally designed by renowned interior specialist Stephen Ryan, recent renovations bring new life and a wealth of artwork.

There's an elevated feel to the entranceway – a tantalising glimpse into the home's striking design. A fusion of old and new, micro-cement flooring and an ethereal grey light fitting effortlessly combine with a soaring ceiling and intricate corning.

A green glass block offers an unconventional step down to the reception room – a gallery of abstract art. An uplifting space to unwind in, a floor-to-ceiling bay window floods light across parquet floors. Conversation starting pieces capture attention, positioned above a Pierro Lissoni sofa to one side, and a gas marble fireplace to the other. Make the most of the Sonos sound system and LEAX lighting and unwind in one of the Rietveld armchairs.

Playing a pivotal role in the open-plan kitchen and dining room, artwork defines the space. Deep toned cabinetry is the framework for a sophisticated kitchen from Mark Wilkinson, complete with lustrous marble counters and integrated Miele appliances. A dark wooden dining table ties the space together, lit by a rose gold light overhead. Double doors open to a thoughtfully separated private garden. To one side, lounge chairs frame a wooden fire pit, while a dining table creates a serene space for alfresco dining.





Striking statement pieces and abstract art bring life to every room.



“

A fusion of old and new, concrete-finish flooring and an ethereal grey light fitting effortlessly combine with a soaring ceiling and intricate cornicing.









Across the lower floor, two minimalist bedrooms take on a Mediterranean aesthetic. In the principal bedroom suite, grey limewash replaces the home's signature white walls, lending an easy calming ambiance. Creating a cosy nook to relax – a floating fireplace and a Le Corbusier Chaise Longe. Integrated wardrobes seamlessly meld into the space, while light filters through glass doors that open to a private patio. A sophisticated space to refresh, monochrome tones wrap around the en suite bathroom. Soak stresses away in the freestanding black bathtub, or step into the rainfall shower.





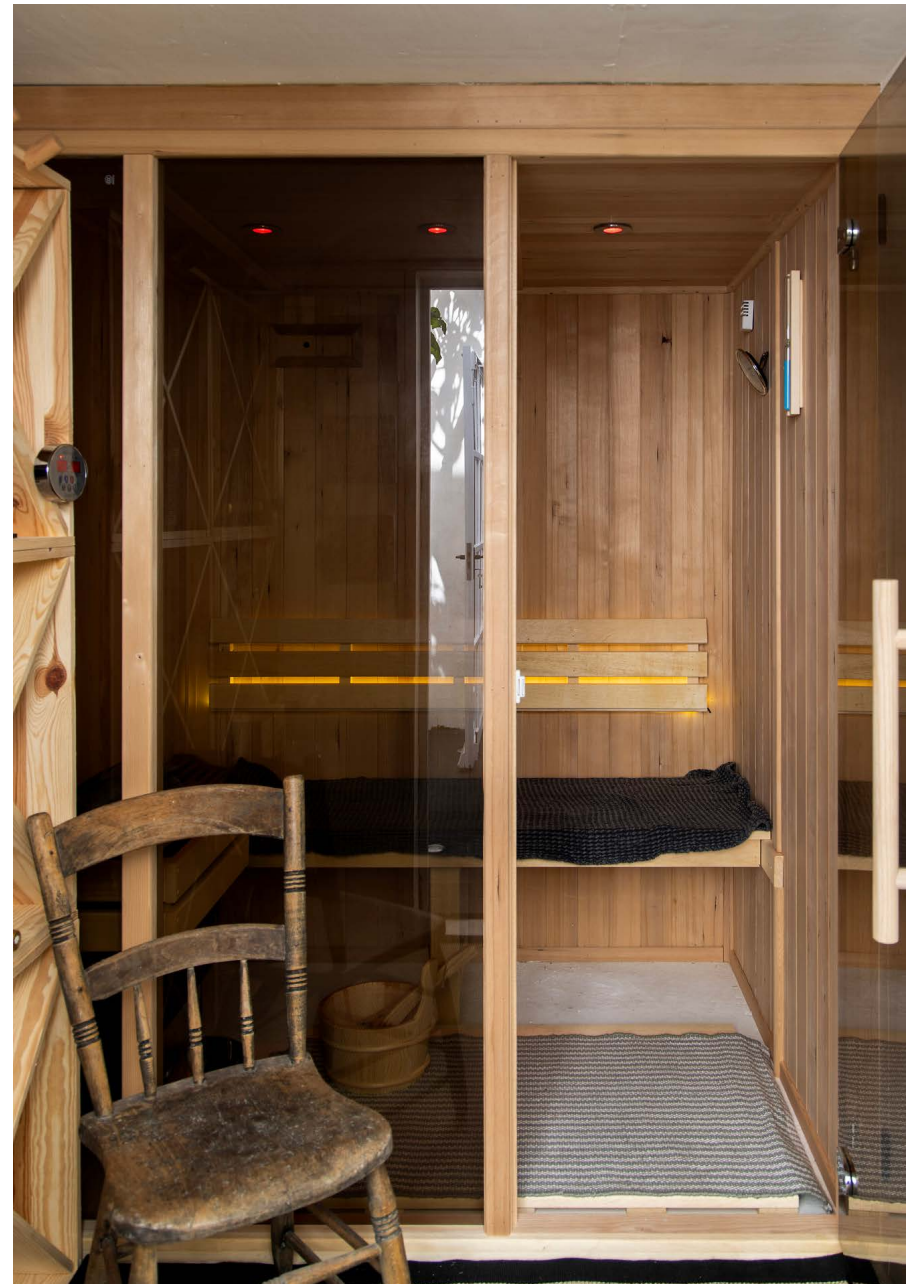






Warm white limewash is a welcoming embrace in the guest bedroom, where a soothing tone is amplified with soft light. Glass doors open to a tranquil internal courtyard, a peaceful spot for morning coffee or evening drinks. Serving this bedroom, a bathroom enveloped in dark textured wallpaper comes with a bathtub.

Also on this floor, a brightly-lit office space leads the way through the courtyard to a sauna.







LOCATION

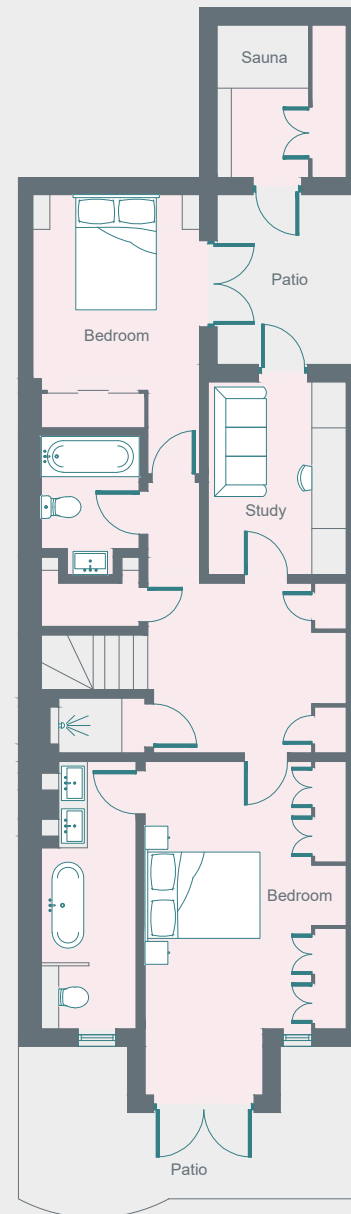
At the heart of Notting Hill, Artisan House puts the area's hotspots directly on your doorstep.

Grab brunch from Farm Girl, then spend an afternoon sifting through the antiques from Portobello's Market or Notting Hill Bookshop's selection of paperbacks. Stop for sweet and savoury delights at Fabrique or try the Pan-Asian dishes at E&O. Come evening, catch a film at the Electric Cinema or tuck into French delicacies at Buvette just downstairs. Finish with a nightcap from Zephyr.

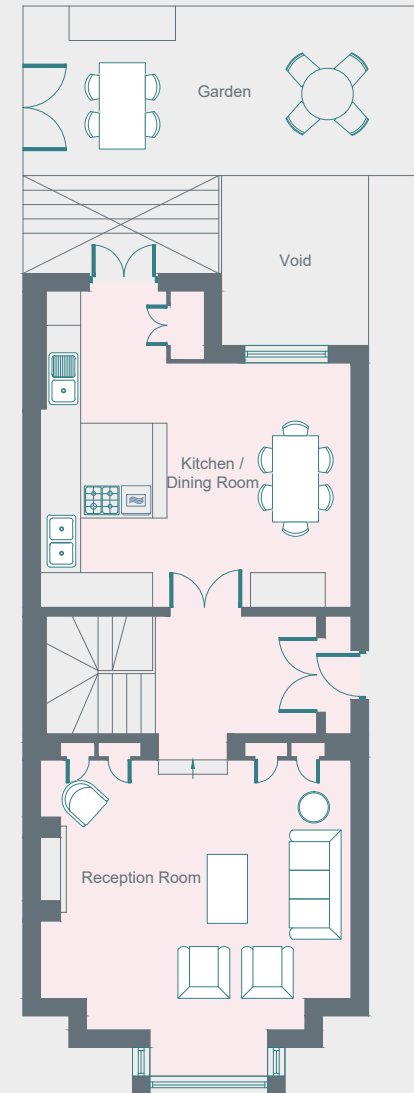


PROPERTY HIGHLIGHTS

- Open-plan kitchen and dining room
- Reception room
- Principal bedroom suite
- Guest bedroom
- Family bathroom
- Study
- Two patios
- Private garden
- Sauna
- Royal Borough of Kensington & Chelsea



Lower Ground Floor



Ground Floor

domus stay.

Please don't hesitate to get in touch
if you have any questions or require
any further information.

hello@domusstay.com

+44 (0)20 8168 8880

Domus Stay provides the perfect combination of property, place and personal service for the world's most remarkable people. If you have any questions, or if we can help in any way, please contact us on the above number. Be it about a property you have, a property you want, dates to check or any special requirements you may need, we'd love a chat.

