

domus
stay.

Chilworth Street III

Bayswater W2

1 Bedroom, 1 Bathroom
For 2 guests





Pedigree meets modernity. A serene one-bedroom apartment on the top floor of a period block in Bayswater.

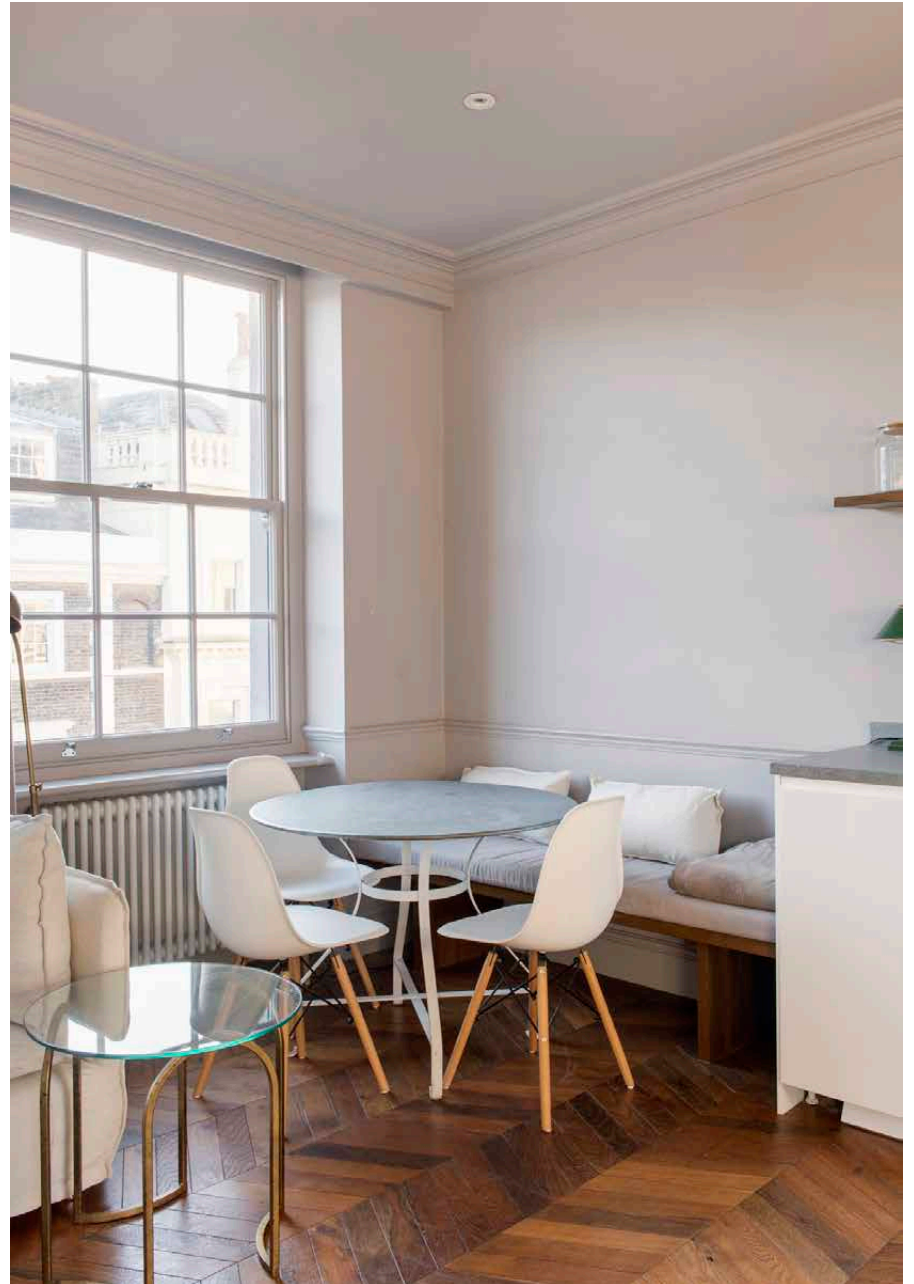
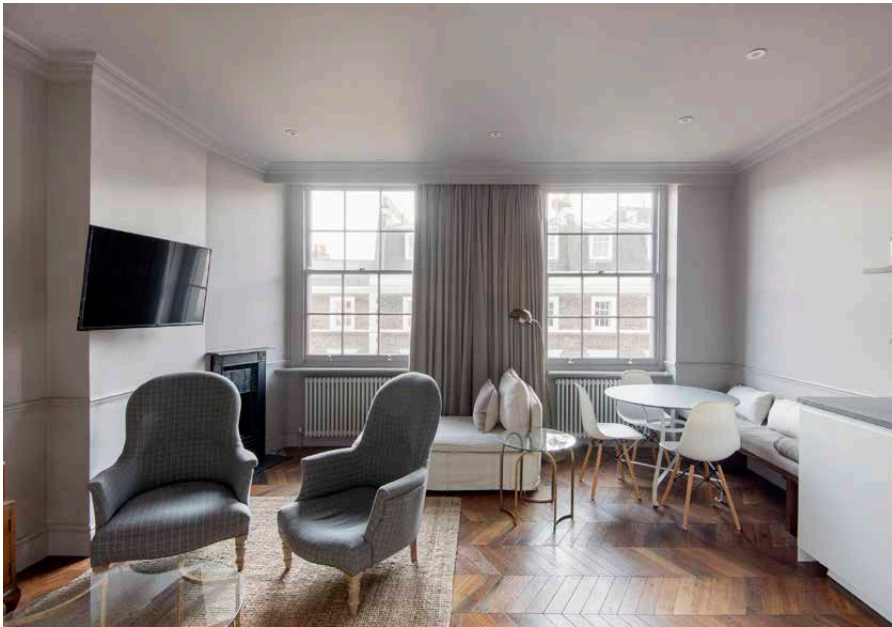
Calming tones create a warm welcome inside this considered home. Set on the third floor of an elegant Victorian building, natural light pours through two large sash windows into the open-plan kitchen and living area. Pared-back cabinetry and integrated appliances create a minimalistic look while clean-line corning and a feature fireplace add a touch of grandeur. Make breakfast in the kitchen then dine on integrated bench seating. On the other side of the space, a comfortable living area is optimised for conversation.

Swedish chevron flooring flows into a quiet, rear-facing bedroom. Mornings are easy waking up in design-forward surroundings. A neutral palette pairs with built-in wardrobes and an enviable vantage point taking in the whole of Gloucester Mews West. Next door, a stylish tiled bathroom features modern fittings and a frameless rainfall shower.





Cook, dine and relax in the spacious reception room.



“

A tranquil retreat with a calming colour scheme and ample storage.



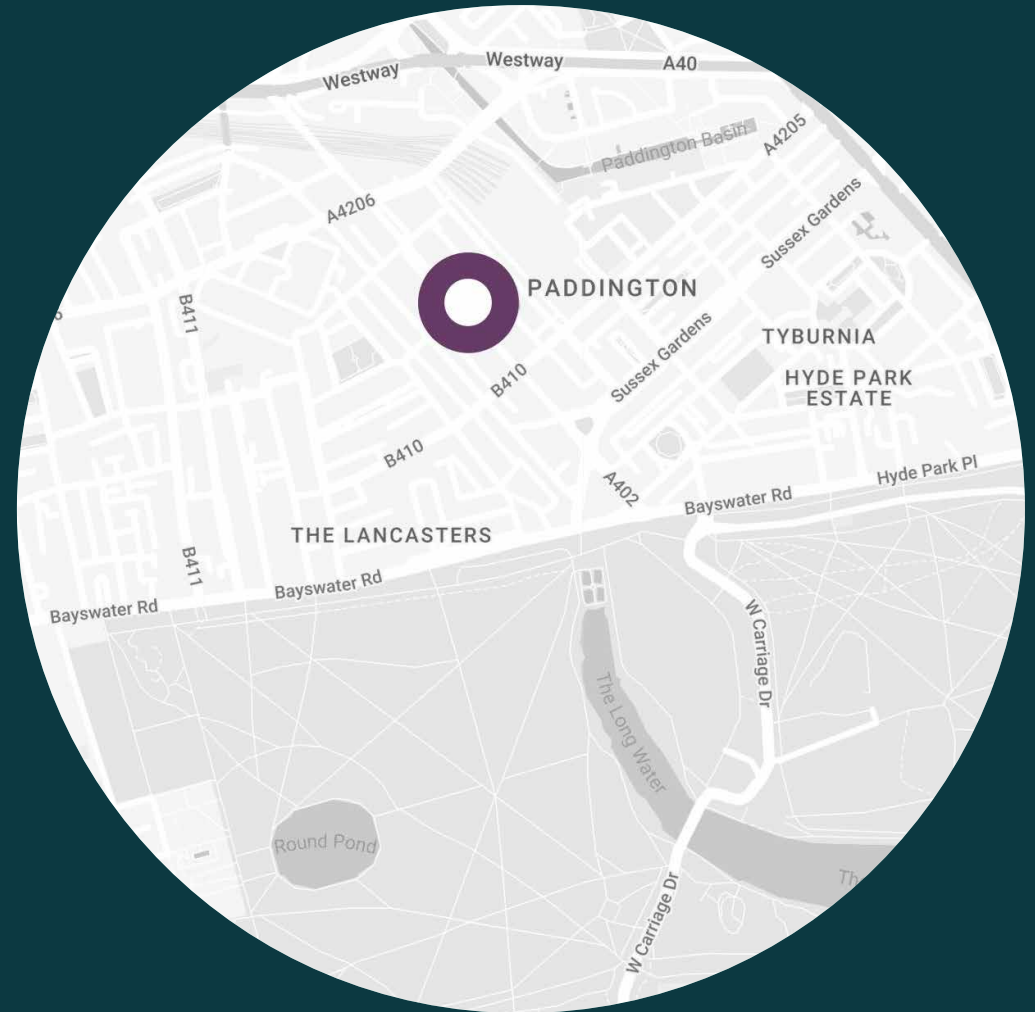


Recharge under the walk-in rainfall shower.

LOCATION

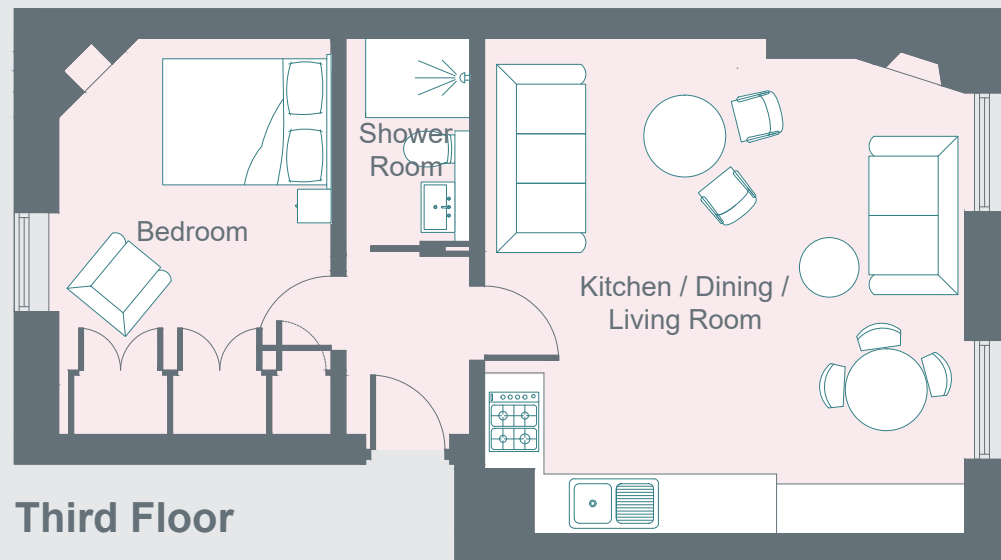
Located in Bayswater, Chilworth Street provides easy access to the West End - London's thriving theatre district.

Enjoy a night of dining and entertainment at operatic restaurant Bel Canto or indulge in a Michelin-starred meal at Le Gavroche. For a more casual dining experience, try the seasonal menu at gastropub The Cleveland Arms, located in the same building. Take a stroll to the boutiques of Westbourne Grove for some retail therapy or escape to the tranquil lawns and manicured gardens of Hyde Park – just five minutes away.



PROPERTY HIGHLIGHTS

- Open-plan kitchen and reception
- One bedroom
- One bathroom
- Fitted storage
- City of Westminster



Third Floor

Approximate Area = 42.4 sq m / 456 sq ft
Including Limited Use Area (0.5 sq m / 5 sq ft)
Surveyed and drawn in accordance with the International Property Measurement Standards (IPMS 2: Residential)
fourwalls-group.com 55937



domus stay.

Please don't hesitate to get in touch if you have any questions or require any further information.

hello@domusstay.com

+44 (0)20 8168 8880

Domus Stay provides the perfect combination of property, place and personal service for the world's most remarkable people. If you have any questions, or if we can help in any way, please contact us on the above number. Be it about a property you have, a property you want, dates to check or any special requirements you may need, we'd love a chat.

