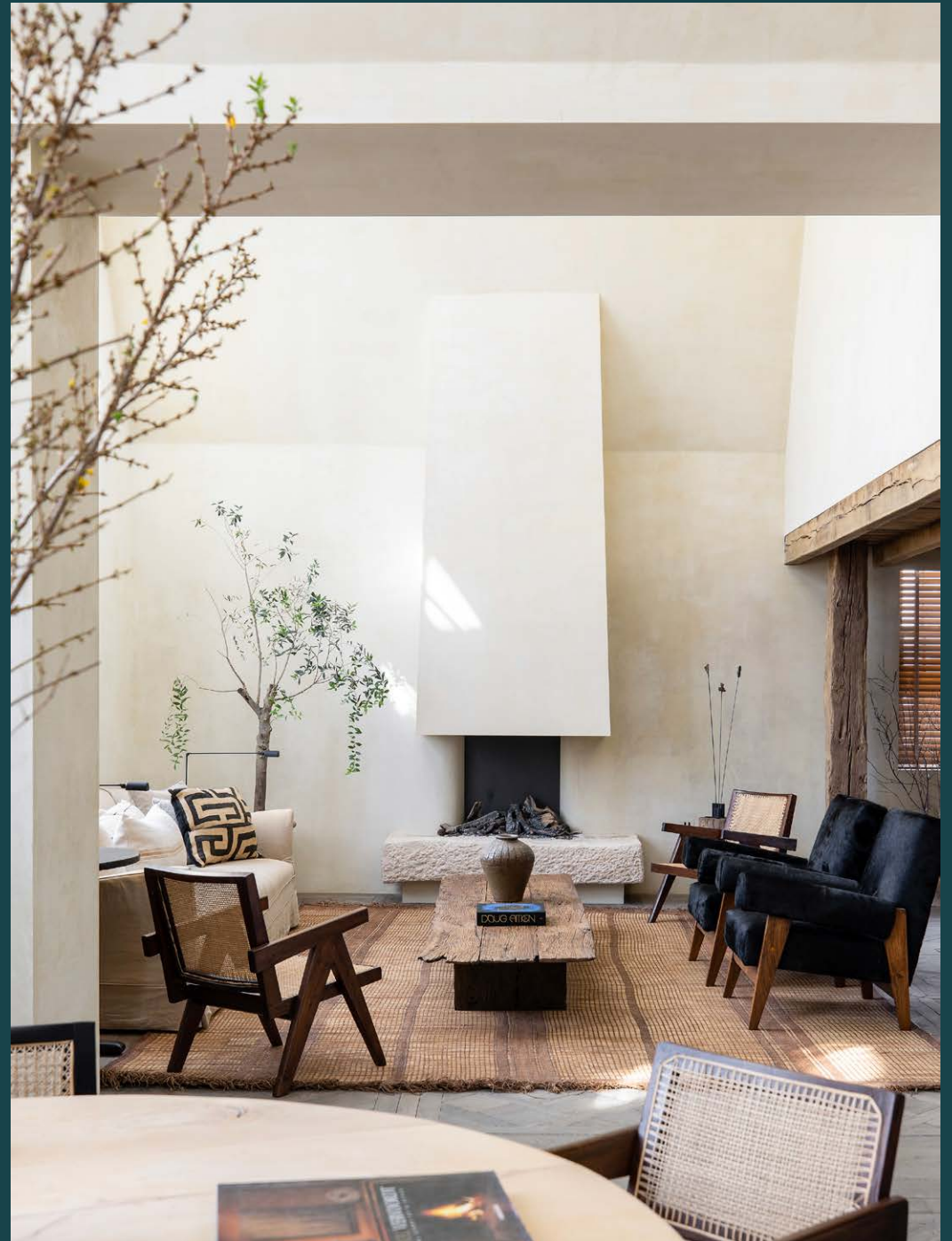


domus
stay.

Blenheim Crescent

Notting Hill W11

2 Bedrooms, 2 Bathrooms
For 4 guests





A statement-making two-bedroom penthouse in Notting Hill. Uplifting proportions and artful design.

Sitting among a row of colourful period townhouses, Blenheim Crescent's historic exterior offers few hints as to what awaits inside. Once an artist's studio, the apartment has been given an expectation defying transformation by interior designer Saskia Blyth-Collinson.

Vaulted ceilings and low-slung beams. Yellow-toned lime plaster and inky black walls: Blenheim Crescent is a lesson in contrasts. The second-floor reception room wraps around like a horseshoe, carving the palatial footprint into a series of seamlessly interlinked spaces.

A pair of double height windows that reach up into the eaves bathe the floor in natural light. In the kitchen, a monolithic Boffi island feels more like a work of sculpture than a piece of furniture. Its smooth marble surface is matched with dark grained wood that adds a moodier accent to the more rustic finishes found elsewhere.

Materials and furniture have been thoughtfully curated throughout, from the Parquet de Versailles wooden flooring sourced in Belgium to the sumptuous upholstery by R.Kightley & Son. Attention has been paid to the very last detail – down to the matt black Dornbracht taps in the bathrooms.





Dark transitions to light in the dining area, where subtly mottled walls reflect the sunshine. Flowing through into the living room, an open fire provides a striking centrepiece, crowned by a chimney that stretches all the way to the ceiling.

“

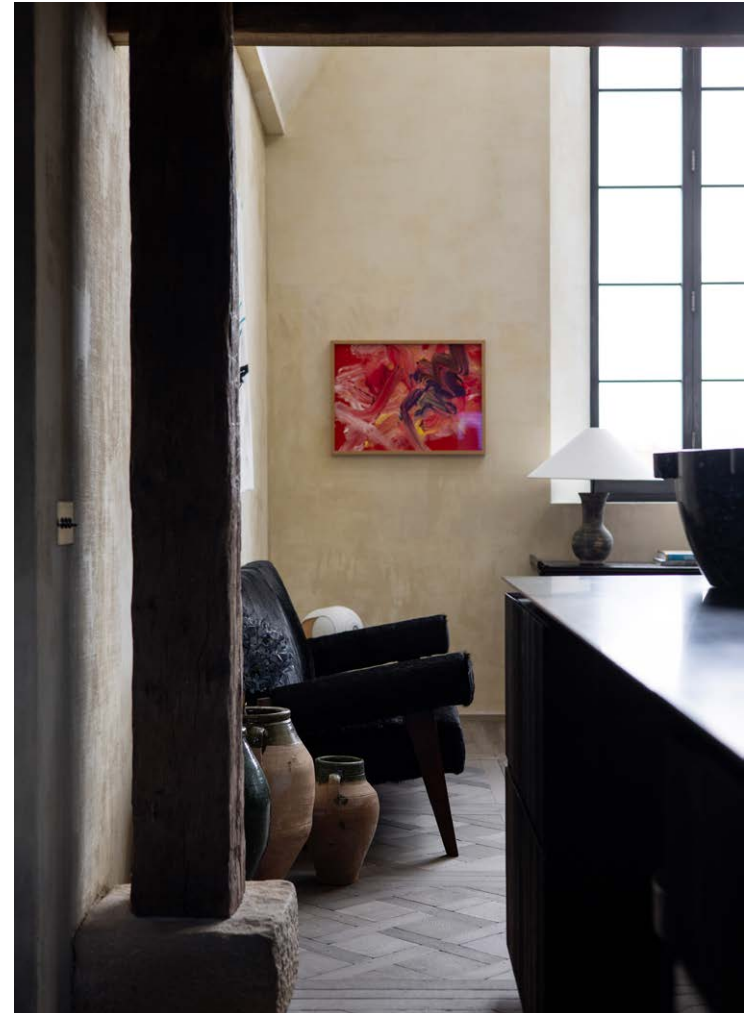
Soaring vaulted ceilings and double height windows that draw the eye upwards are counterbalanced with more intimate corners.





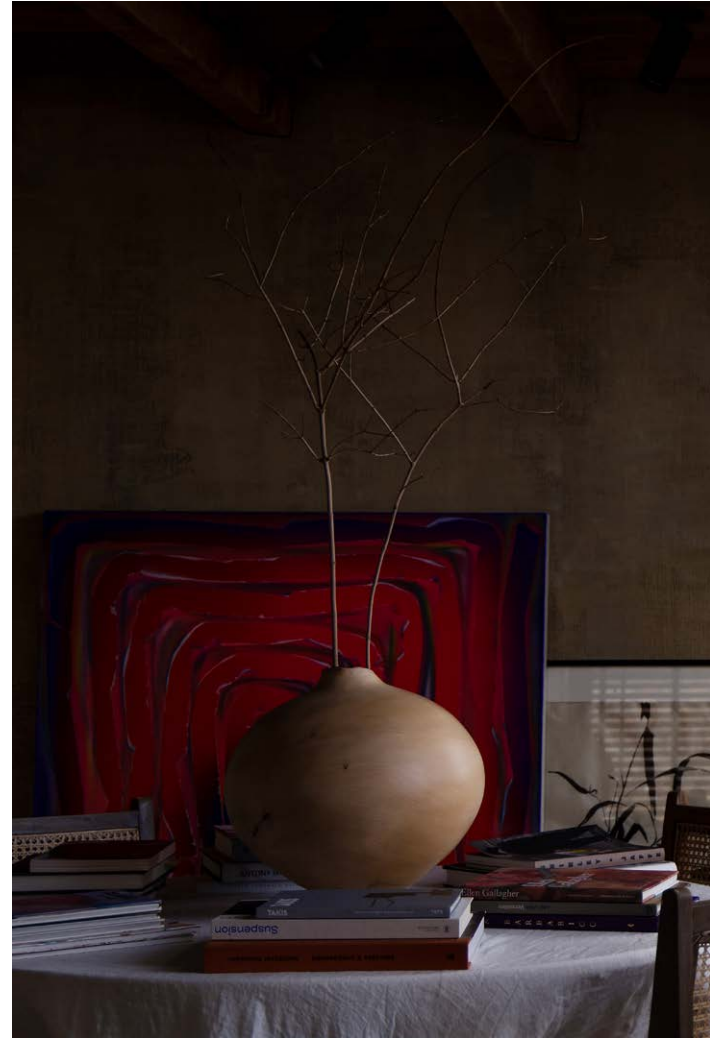
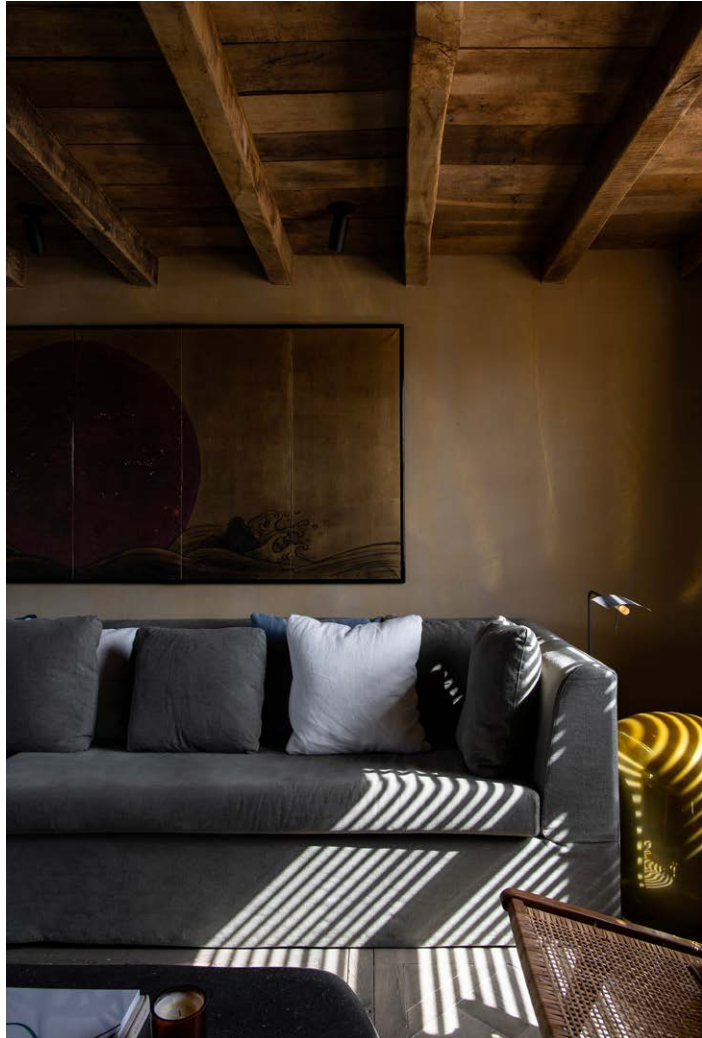


Interior visionary Saskia Blyth-Collinson has brought an eclectic stamp to the gallery-like space, juxtaposing heirlooms with carefully sourced pieces.









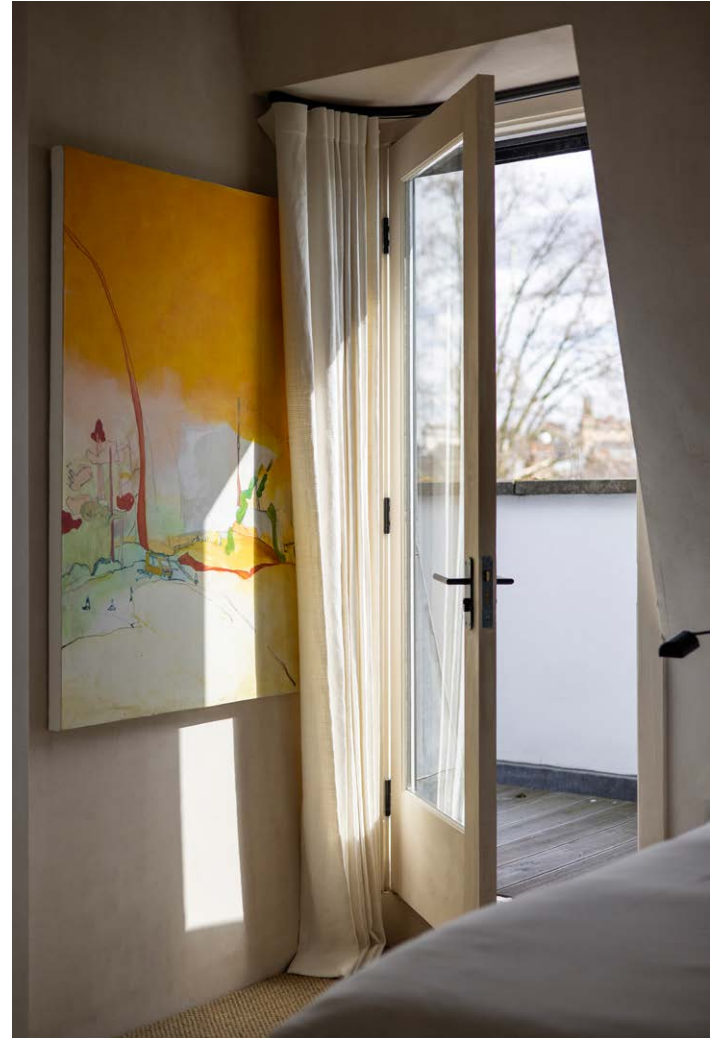
Both bedrooms come with en suites, ensuring ultimate privacy and relaxation. In the guest room, blush plaster walls, a hessian carpet and access to a balcony set a soothing tone, while integrated storage ensures the space remains clutter free.

The same pared-back palette is adopted in the principal suite. The stone-toned, skylit bathroom with its walk-in shower and trough sink has a spa-like quality. The sleeping quarters are similarly tranquil – note the four-poster bed draped with soft cream linens – while the vaulted ceiling adds to the impressive sense of volume and scale. From here, step out of the double doors onto the balcony to gaze over the rooftops of Notting Hill.



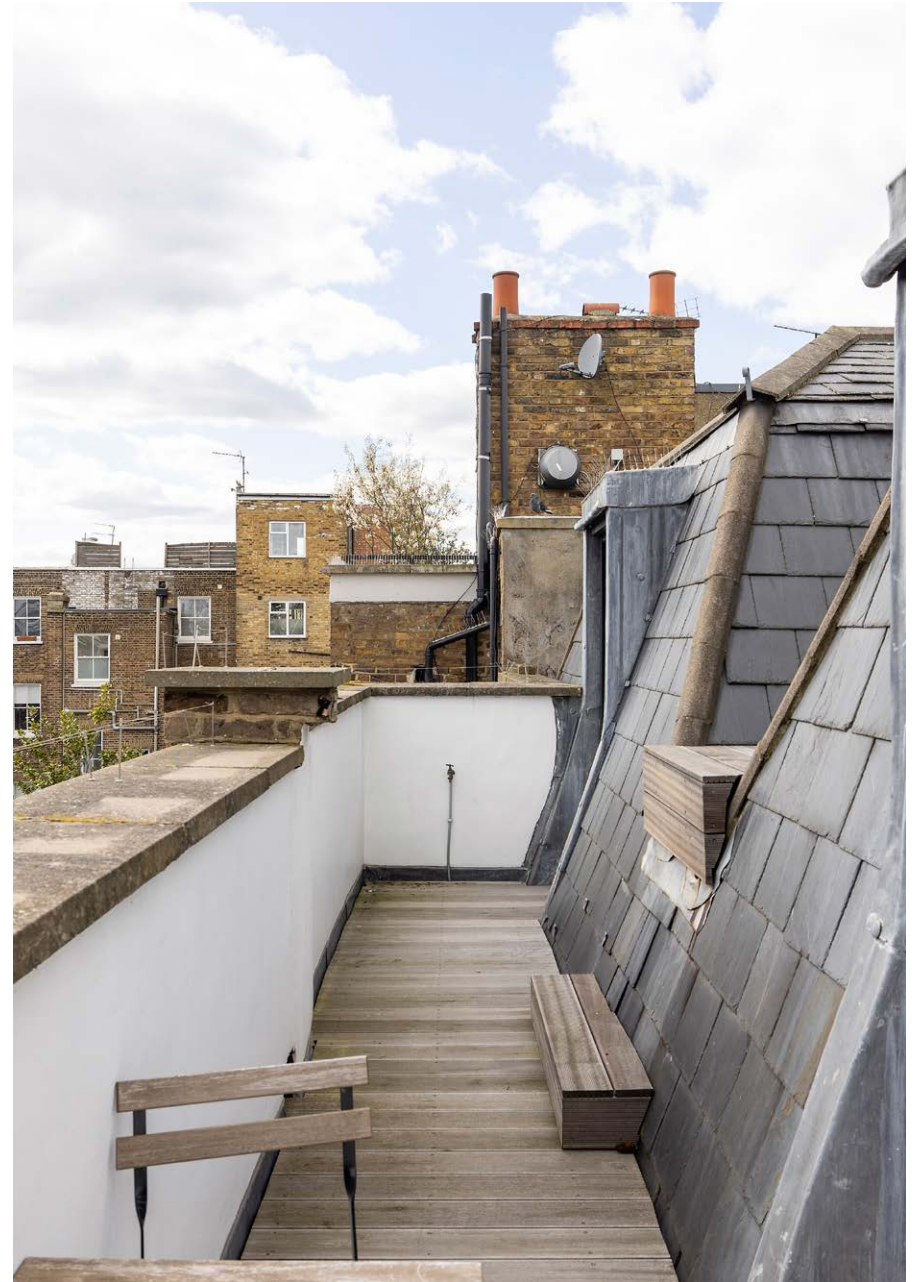






“

Both en suite bedrooms enjoy a sense of privacy and tranquility.









LOCATION

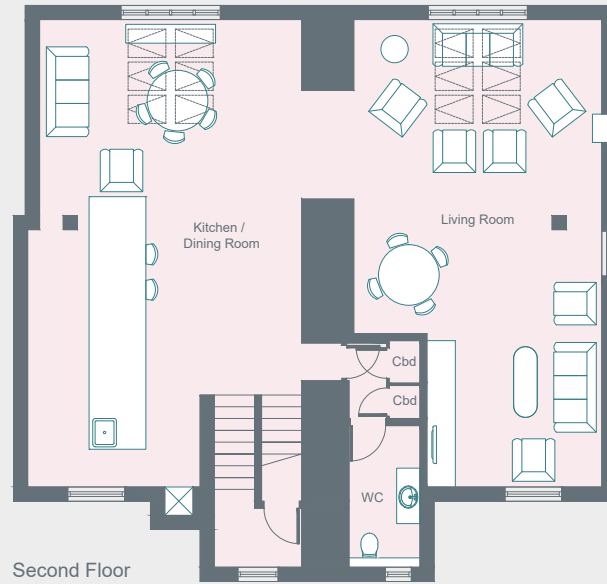
Set in the very heart of Notting Hill, Blenheim Crescent is one of Notting Hill's most desirable streets.

With Portobello Road and Kensington Park Road on your doorstep, it's easy to spend hours getting to know the neighbourhood's famous thoroughfares. Spend mornings sifting through antiques at Portobello Market or running fingers down the spines of curated literature in the Notting Hill Bookshop. Pick up a tangy sourdough from Fabrique before a session at SoulCycle. Spend evenings catching a film at the Electric Cinema or dining at Gold and be back home in five minutes. Ladbroke Grove station is just a short walk away, providing quick access to the city.

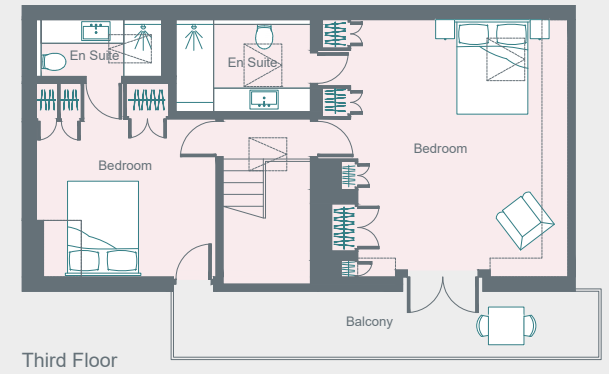


PROPERTY HIGHLIGHTS

- Open-plan kitchen and reception room
- Principal bedroom suite
- Guest bedroom suite
- Additional cloakroom
- Private balcony
- Royal Borough of Kensington & Chelsea



☐ = Reduced head height below 1.5m



domus stay.

Please don't hesitate to get in touch
if you have any questions or require
any further information.

hello@domusstay.com

+44 (0)20 8168 8880

Domus Stay provides the perfect combination of property, place and personal service for the world's most remarkable people. If you have any questions, or if we can help in any way, please contact us on the above number. Be it about a property you have, a property you want, dates to check or any special requirements you may need, we'd love a chat.

