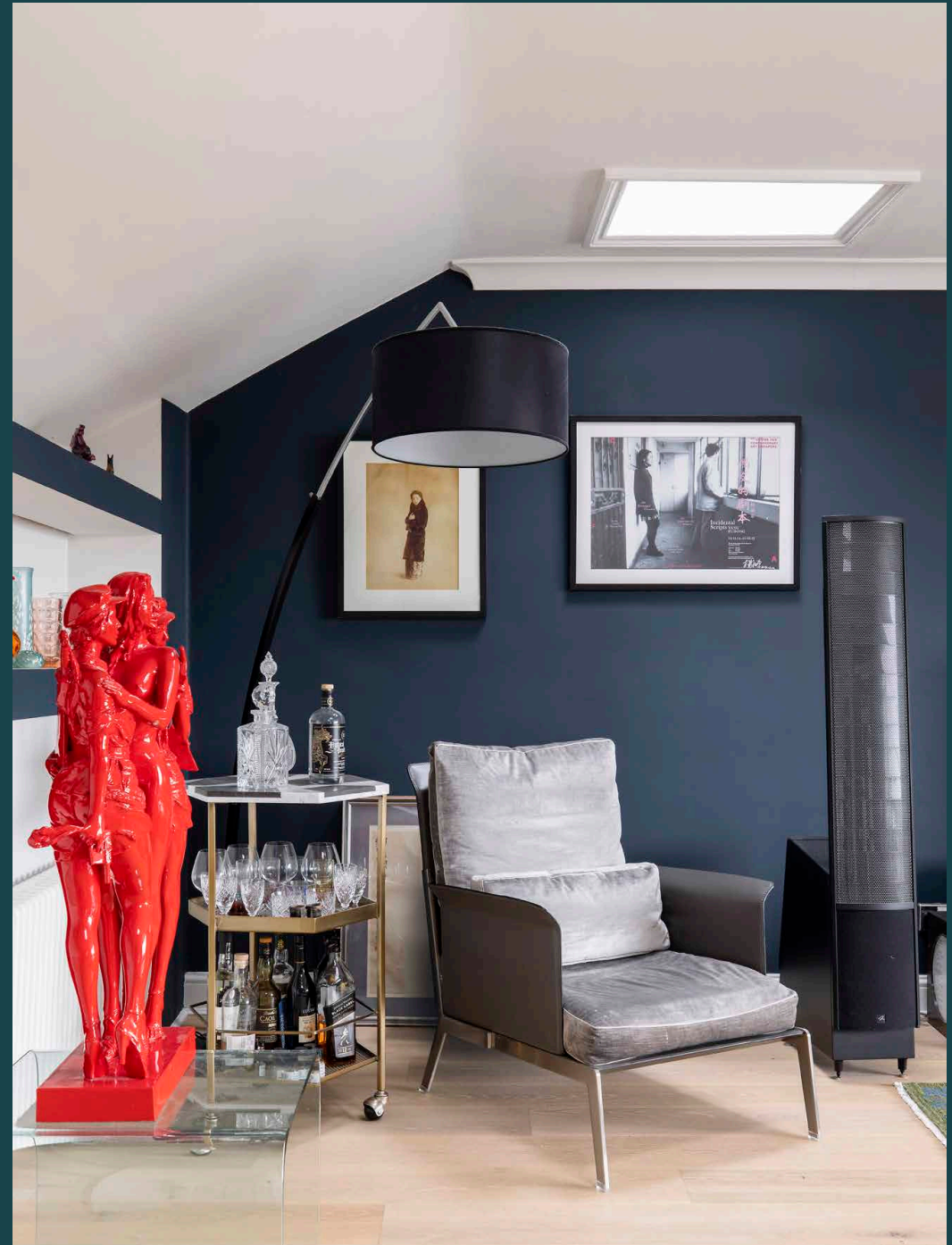


domus
stay.

Westbourne Terrace

Paddington W2

3 Bedrooms, 2 Bathrooms
For 6 guests





Cityscape views and a gallery of global art await at this Paddington duplex apartment.

Spread over the third and fourth floors of a stucco-fronted townhouse, Westbourne Terrace is a family home with an artistic persuasion. Contemporary yet characterful, conversation-starting artwork is curated with a collector's eye.

In the main living space on the top floor, a pillar-box red sculpture of three female soldiers by Chinese artist Huang Gang competes for attention with the views beyond the bi-folding doors. There are no shortage of pieces to inspire here, from framed calligraphy to Mexican ceramics and a composition of Chicago at night by acclaimed British photographer David Yarrow.

Clusters of furniture zone the space into corners for reading, socialising and kicking back with a drink from the bar cart. A sculptural white leather sofa pops against dark navy walls and armchairs circle a coffee table covered with contemporary art tomes. A row of skylights keeps things bright – as does the decked patio beyond. Lined with plant pots and overlooking the rooftops of Paddington, it brings the outside in.





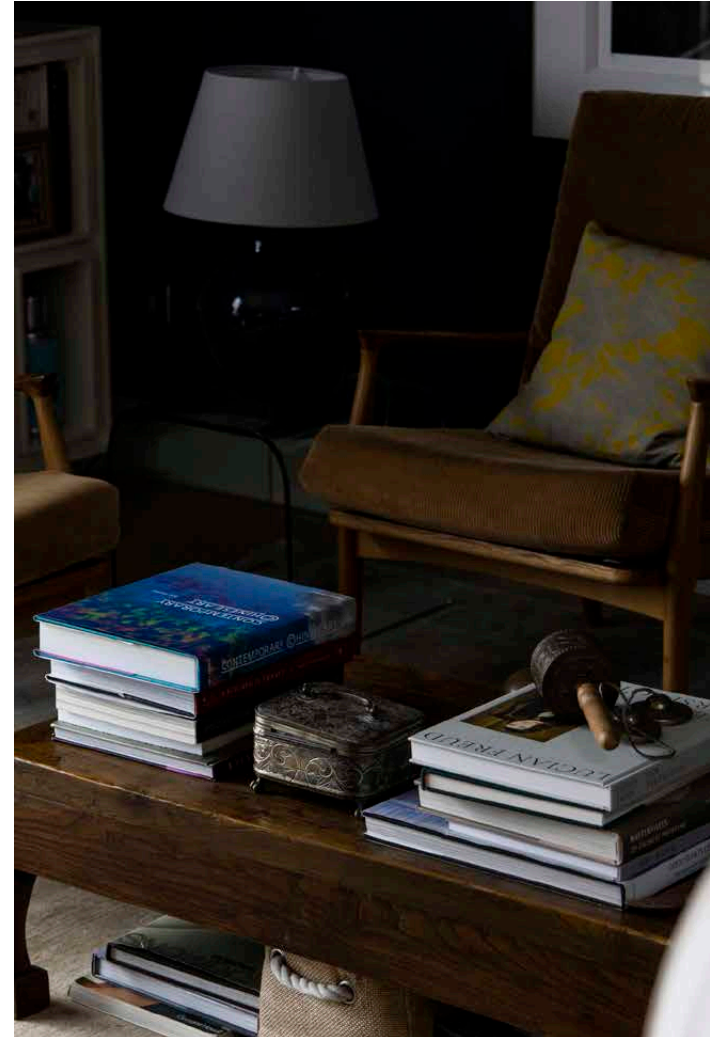
“

Surround yourself with a treasure trove of inspiring artworks, from sculpture to paintings by contemporary artists including Huang Gang, Chen Liang and Yang Xun.





Keep one eye on friends and family gathered around the circular table as you cook – and one on entrance hall through the porthole window.

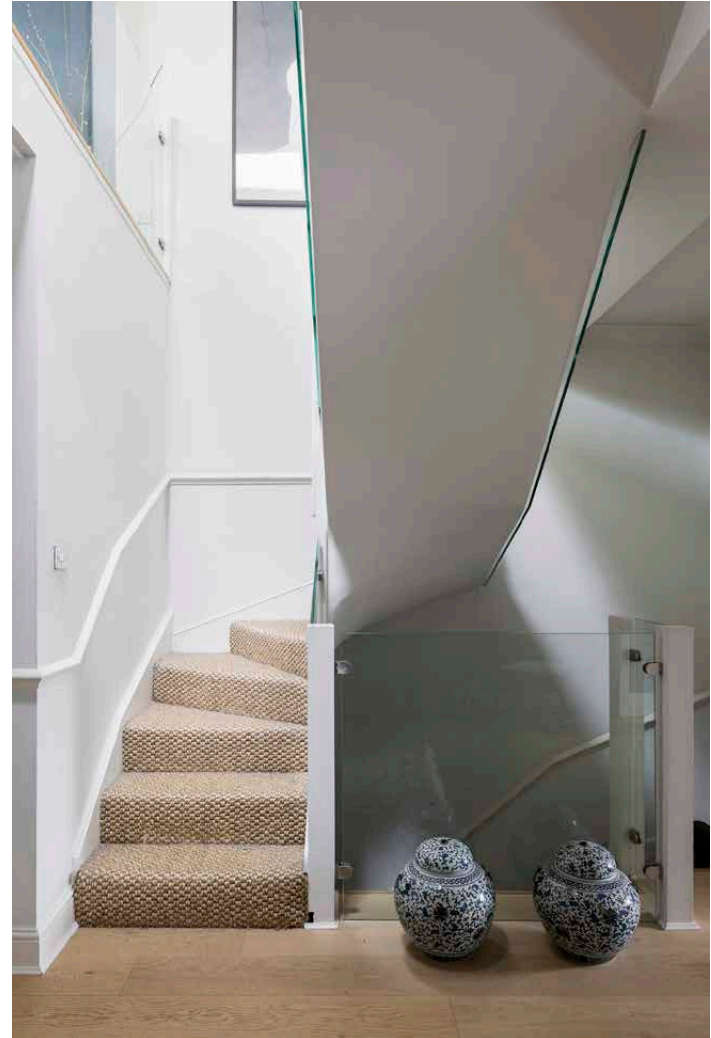


Backdropped by eclectic artwork and a considered colour palette.



White walls, glossy cabinets and hexagonal tiles create a neutral backdrop for plants and eclectic furniture, including an ornate Ming dynasty rosewood console table sourced from Beijing. The hallway's antique chest is also worth noting – it was once used to store Buddhist scripture in a Tibetan monastery.





“

Upstairs for unwinding, downstairs
for cooking and dining.

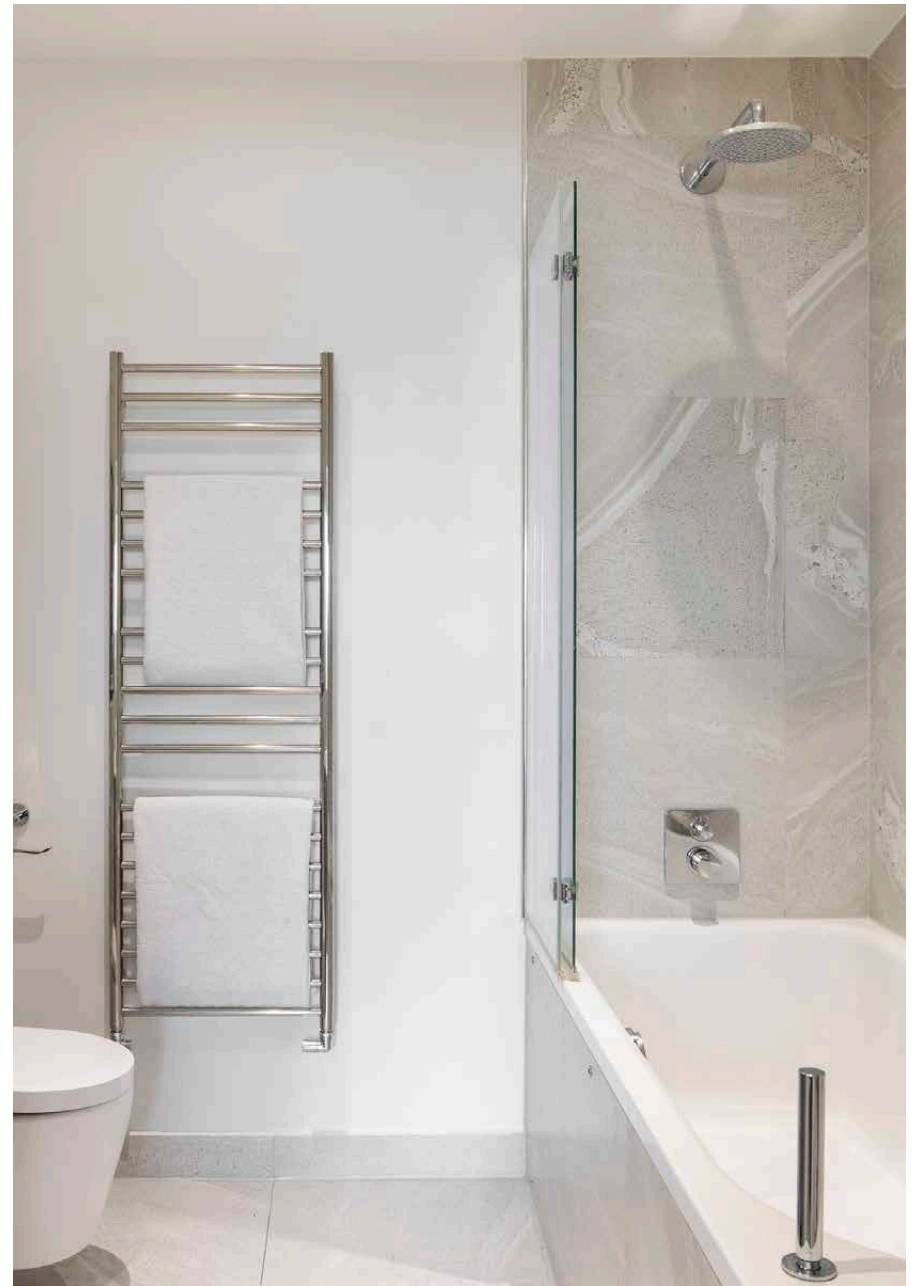




All three bedrooms – one of which is set up as a study – and a sleek family shower room are found on this floor. In the principal bedroom, fitted wardrobes and bookcases offer ample storage to keep things clutter-free, while a deep green feature wall, bronze sculpture busts and wooden floors add warmth. The building also comes with lift access.

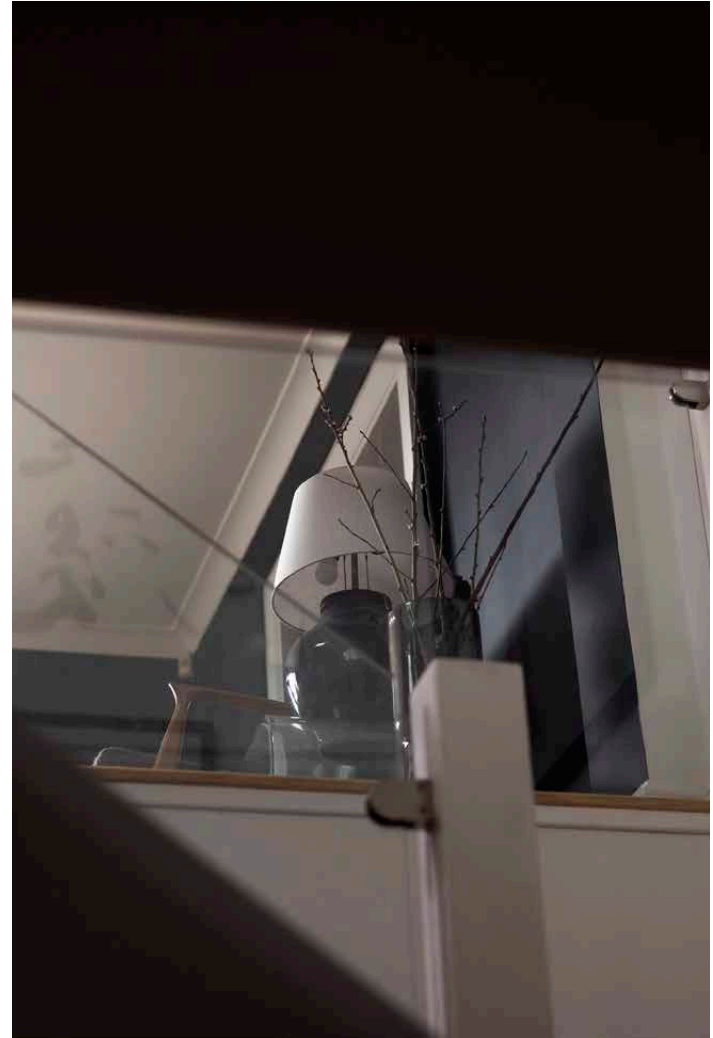
“

There's a spa-like quality to the en suite, which features a shower over the bathtub.











LOCATION

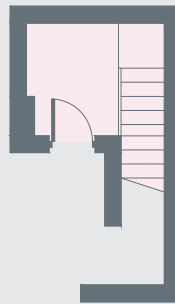
Moments from Paddington Station, Westbourne Terrace is a springboard to central London - with the buzz of Bayswater and Notting Hill on the doorstep.

With the manicured lawns of Hyde Park in one direction and Paddington Basin in the other, moments of calm are also easy to come by. Unwind with a stroll along the canal following the colourful barges to Little Venice or take a dip in the Serpentine Lido. For retail therapy, the boutiques of Westbourne Grove are nearby (refuel with coffee and croissants from Sunday in Brooklyn) or venture a little further into Notting Hill for coveted vintage shopping. Come evening, dine at The Ledbury before dropping by The Cleveland Arms for a nightcap.

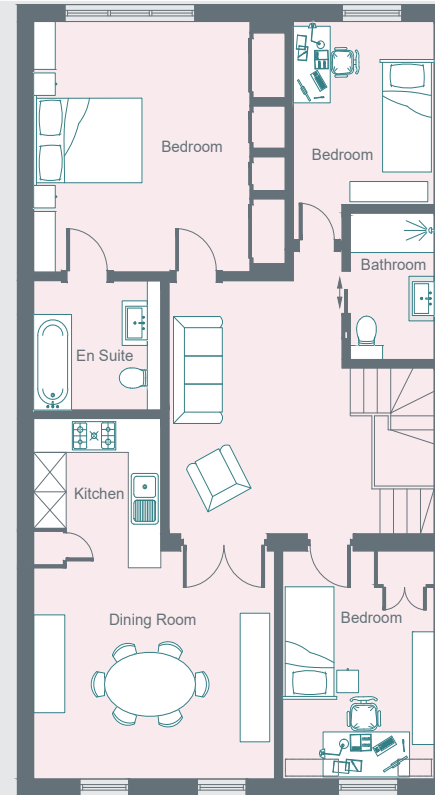


PROPERTY HIGHLIGHTS

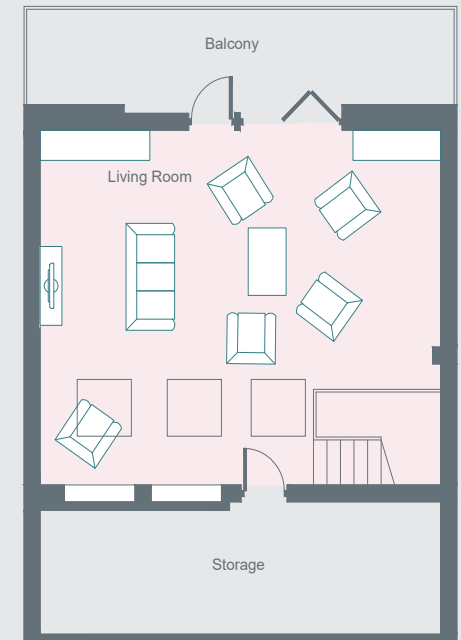
- Open-plan kitchen and dining room
- A spacious reception room
- Principal bedroom suite
- Two further bedrooms
- Family shower room
- Private balcony
- Lift access
- City of Westminster



Third Floor



Fourth Floor



Fifth Floor



Please don't hesitate to get in touch if you have any questions or require any further information.

hello@domusstay.com

+44 (0)20 8168 8880

Domus Stay provides the perfect combination of property, place and personal service for the world's most remarkable people. If you have any questions, or if we can help in any way, please contact us on the above number. Be it about a property you have, a property you want, dates to check or any special requirements you may need, we'd love a chat.

