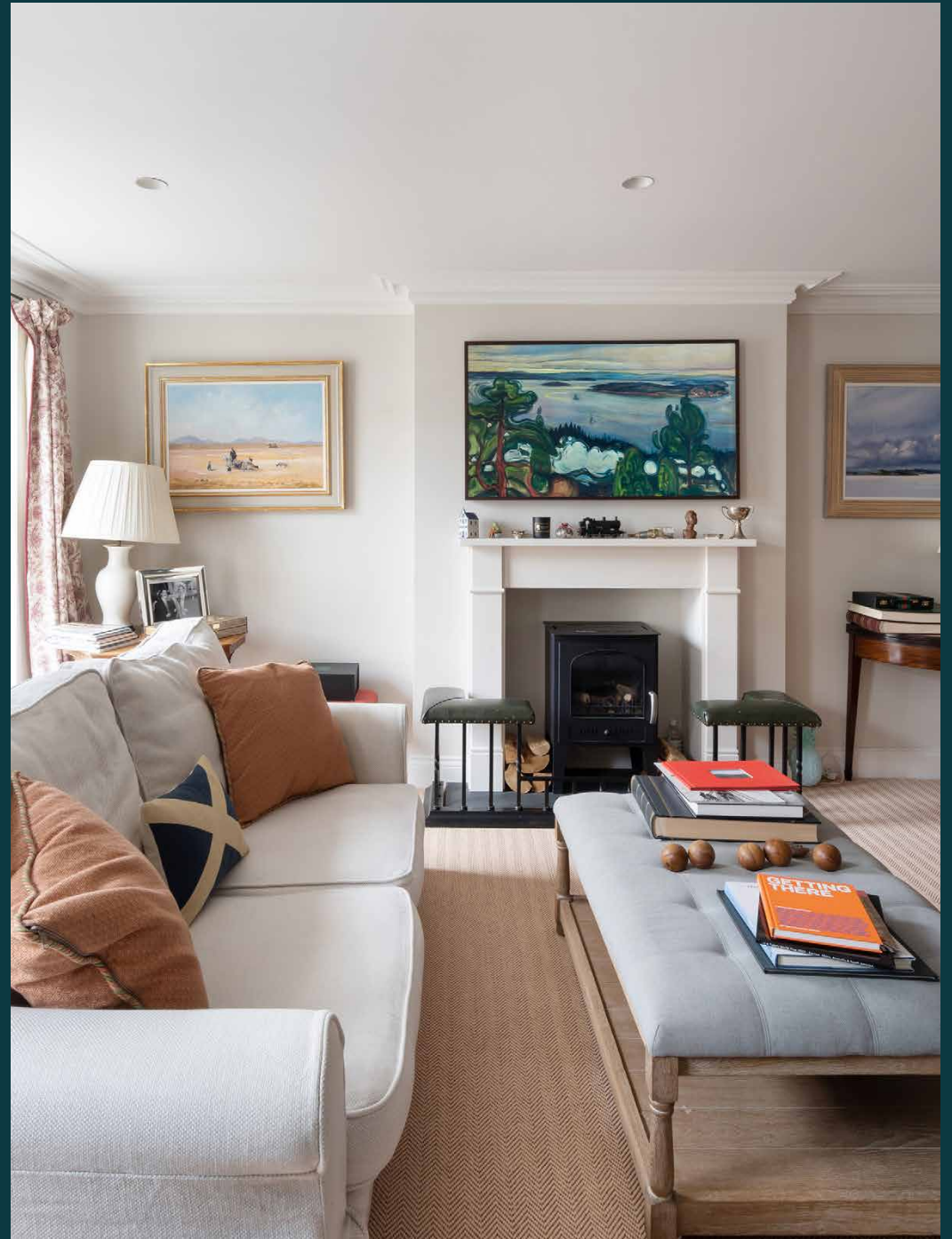


domus
stay.

Pencombe Mews

Notting Hill W11

3 Bedrooms, 2 Bathrooms
For 6 guests





An ode to the charming English countryside in the beating heart of Notting Hill.

The thrum of the city quieters as you head into Pencombe Mews. This three-bedroom sanctum pays homage to English rural dwelling: muted colours that draw inspiration from nature; living spaces arranged with socialising in mind; a trove of bucolic artwork and eclectic artefacts. Lovingly-curated, this is a lesson in peaceful escapism.

The social heart of the home, an open-plan kitchen and reception room bears all the hallmarks of a country home.

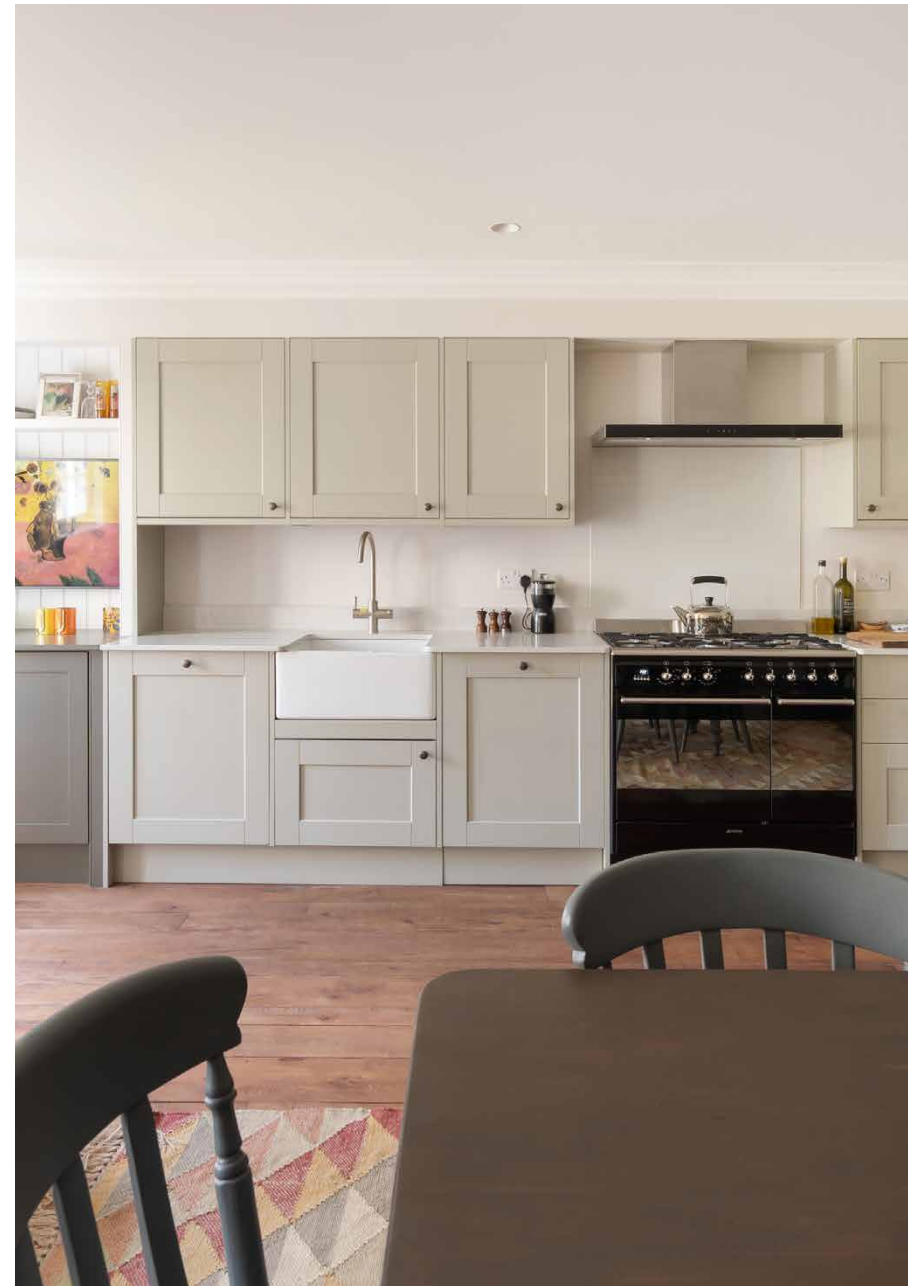
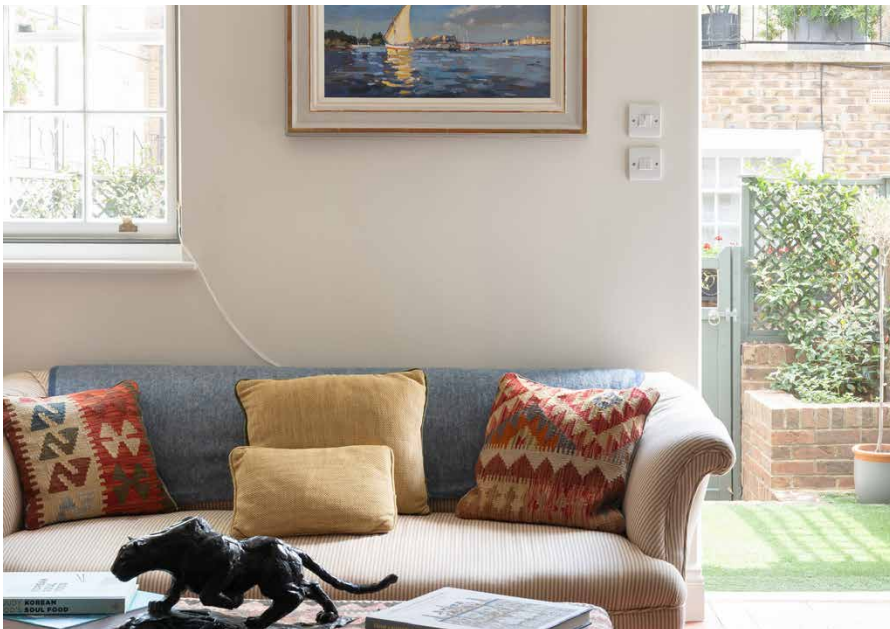
Culinary practicality runs alongside a feeling of welcoming homeliness. Reclaimed wood floors set the scene for dining and sitting zones; it's a convivial space tailor-made for entertaining. A Smeg range oven is perfect for experienced cooks and novice chefs alike. In warmer climes, the garden is a tranquil setting for morning coffees and evening sundowners.

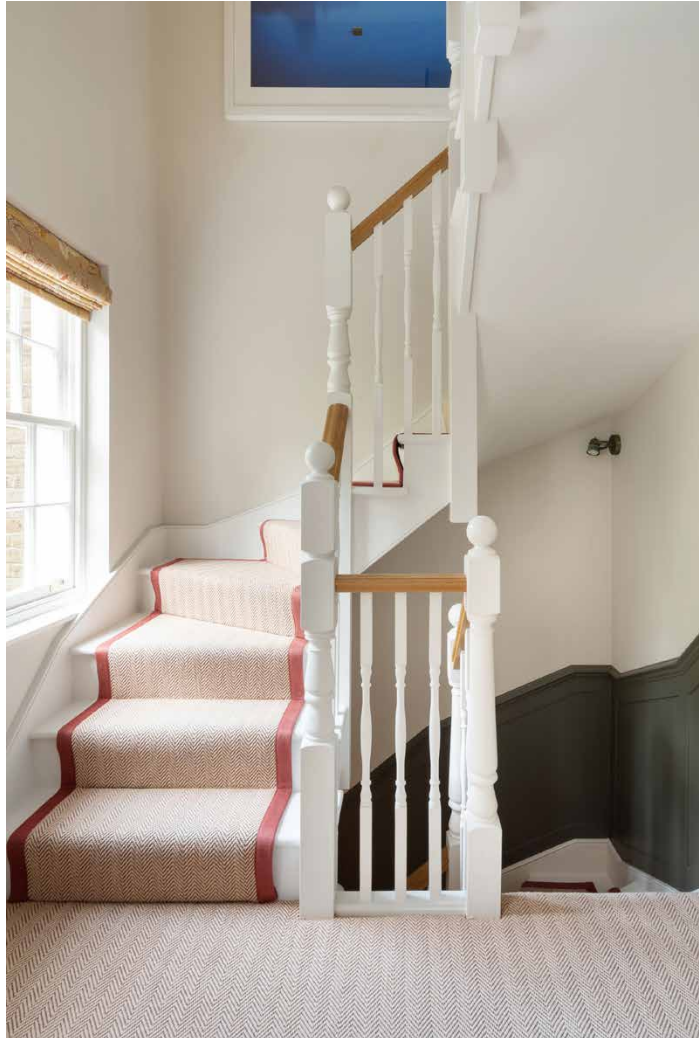




“

Culinary practicality runs alongside a feeling of welcoming homeliness. Reclaimed wood floors set the scene for dining and sitting zones; it's a convivial space tailor-made for entertaining.



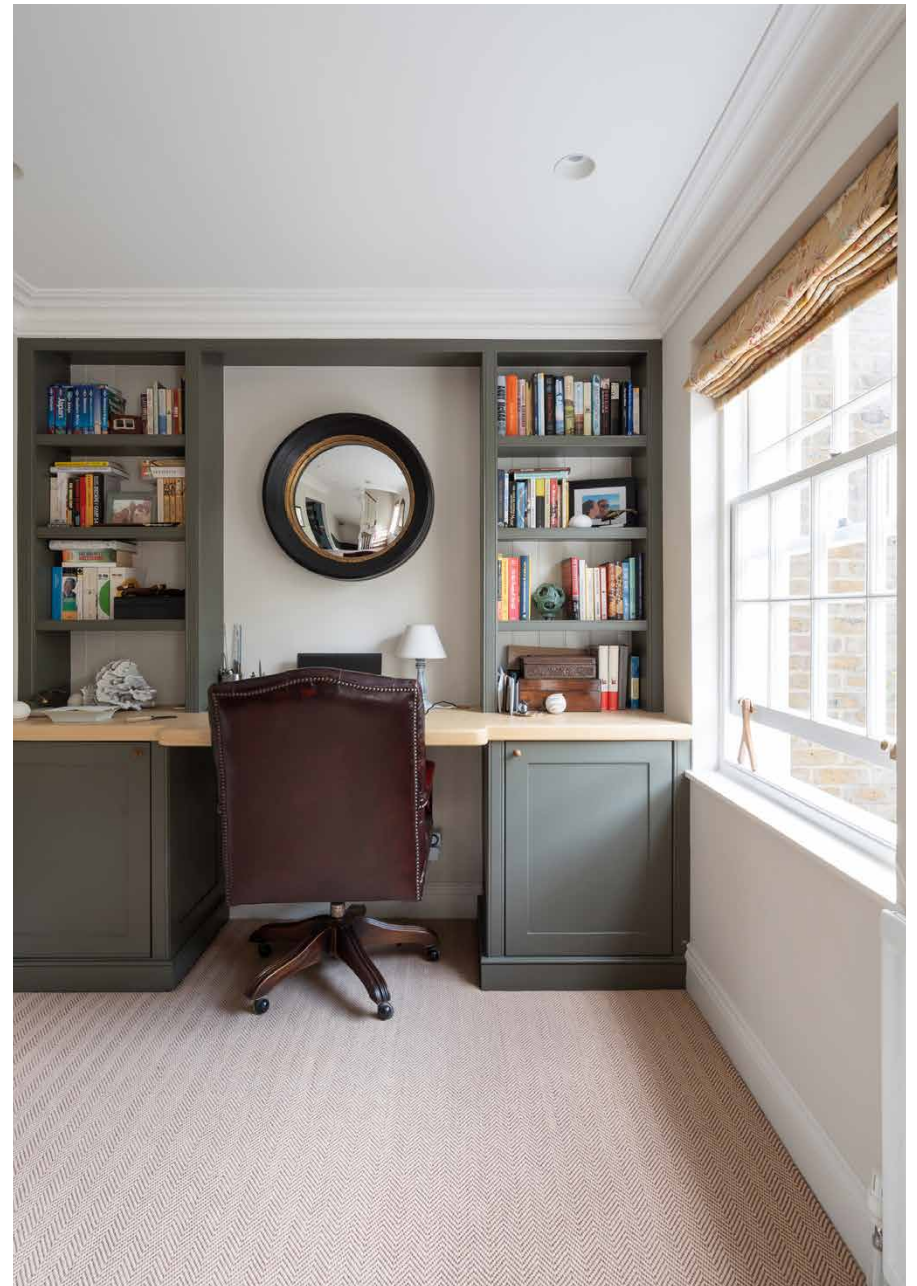


There's aesthetic sophistication to the staircase, with woven carpets and dark sage paneling uniting each floor with the next.





The first-floor living room is a thoroughly inviting space. Furniture is thoughtfully arranged for conversation, with an ornamental fireplace as a cosy focal point. Muted colours and timeless patterns, from the striped armchairs to chintz curtains. Soothing artwork transports you to pastoral plains, whilst books, photographs and ornaments add a personal touch. Prepare a warming tippie at the bar area, curl up with a page-turner or host a backgammon tournament with loved ones. Next door, a light-filled study is set for dedicated home workers.





The considered palette of materials and tones is effortlessly continued into the master bedroom suite—a soothing space in which to press pause. Two floor-to-ceiling wardrobes can store treasured pieces or new Westbourne Grove finds. Its ensuite bathroom pairs soft marble tiling with handsome tongue and groove wainscoting. In the guest bedroom next door, botanical-print curtain fabric subtly echoes the greenery outside.

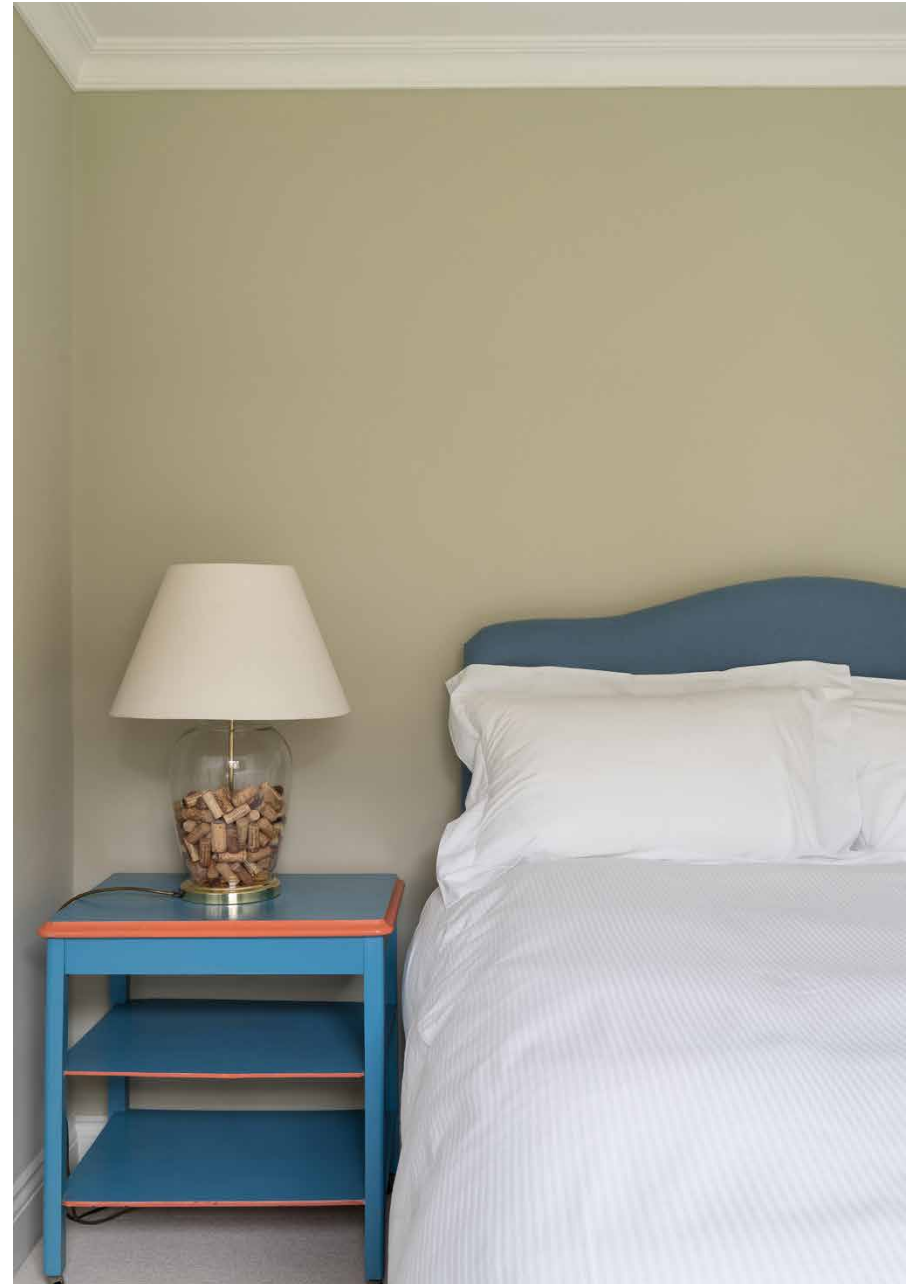
“

There's fantastic quietude to Pencombe Mews. With a secluded location, this is a home that feels world's away from the capital's busy thrum.



“

In the guest bedroom next door,
botanical-print curtain fabric subtly
echoes the greenery outside



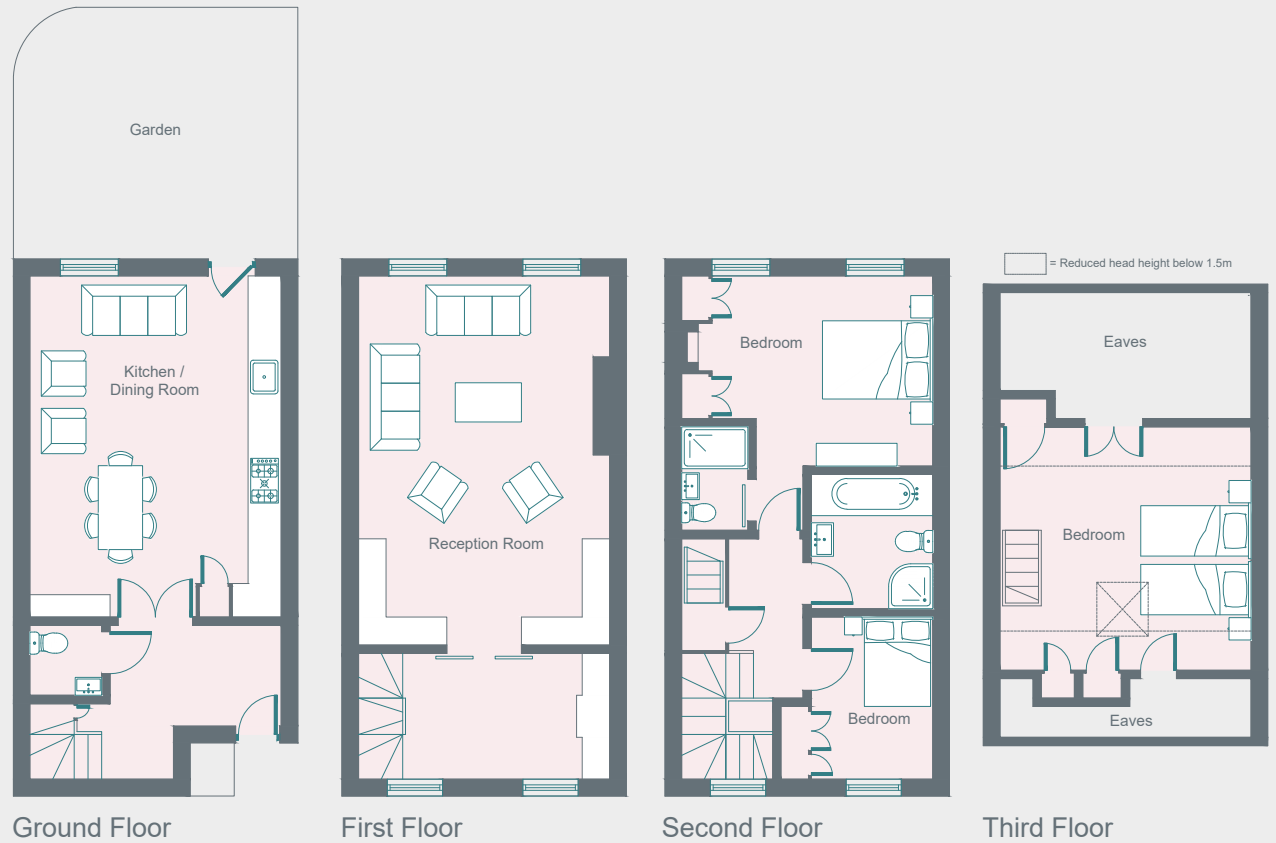


A cherry-red staircase is an uplifting pop of colour which leads to the twin bedroom nestled in the attic.



PROPERTY HIGHLIGHTS

- Open-plan kitchen and reception room
- Living room
- Master bedroom suite
- Guest bedroom
- Twin attic bedroom
- Family bathroom
- Study
- Garden
- Royal Borough of Kensington & Chelsea



Approximate Area = 142.1 sq m / 1529 sq ft (Excluding Eaves)
Including Limited Use Area (7.5 sq m / 81 sq ft)

Surveyed and drawn in accordance with the International Property Measurement Standards (IPMS 2: Residential)
fourwalls-group.com 889362



LOCATION

The best of both worlds; a secluded mews location with enviable proximity to Notting Hill's best offerings.

Westbourne Grove is on your doorstep for boutique shopping or artisanal brunches. Stock up a basket of seasonal produce at the Notting Hill Fish & Meat Shop or indulge in a three Michelin-starred dinner at Core by Clare Smyth. The ultimate self-care starts at Face Gym, where facials meet fitness, or head over to Bodyism, a holistic gym experience that fuses exercise, mindfulness and nutrition. It's a short walk to the manicured lawns of Hyde Park; it's the spot for a refreshing early-morning swim at the Serpentine Lido.



domus stay.

Please don't hesitate to get in touch if you have any questions or require any further information.

hello@domusstay.com

+44 (0)20 8168 8880

Domus Stay provides the perfect combination of property, place and personal service for the world's most remarkable people. If you have any questions, or if we can help in any way, please contact us on the above number. Be it about a property you have, a property you want, dates to check or any special requirements you may need, we'd love a chat.

