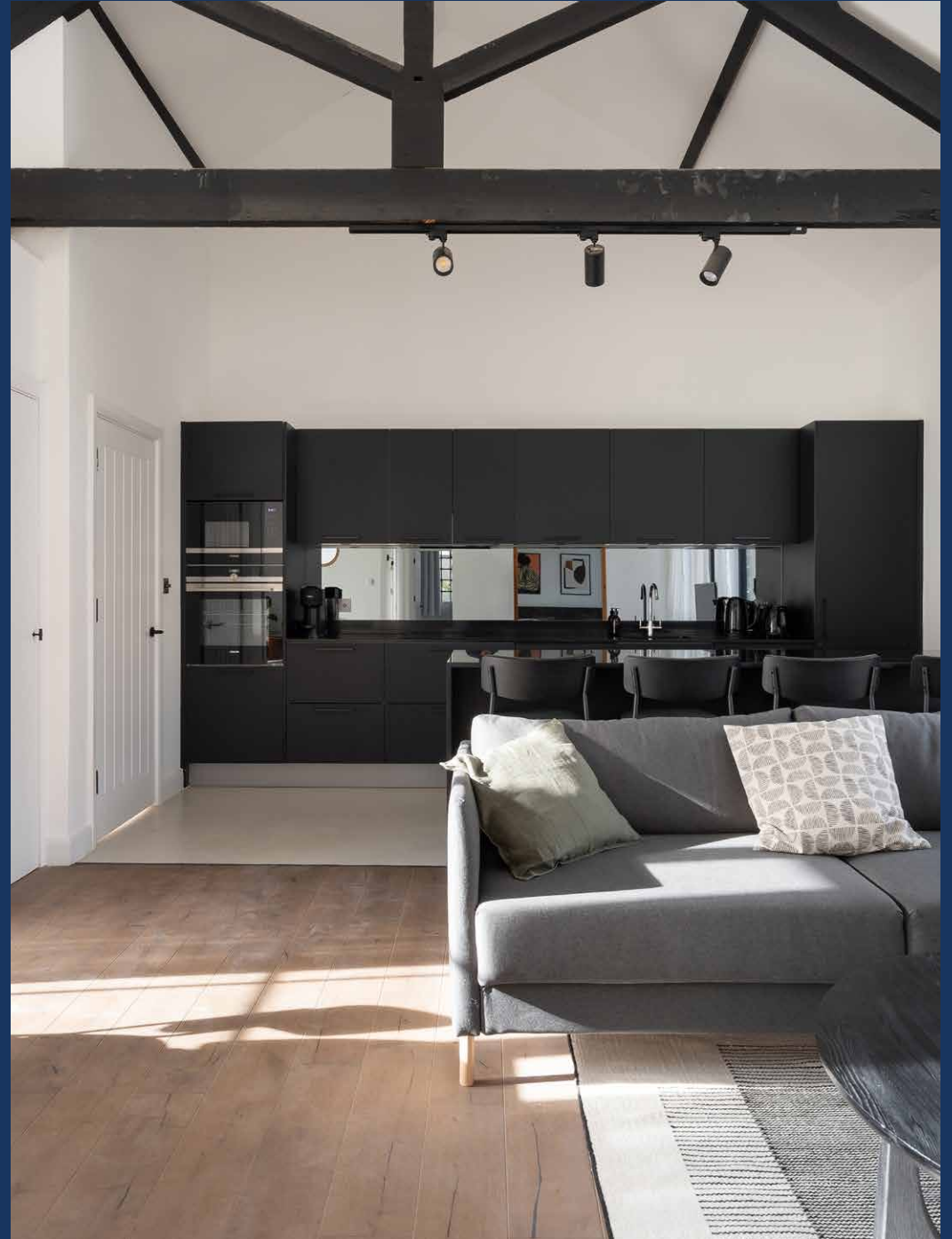

The WIK Penthouse

Queen's Park W9

2 Bedrooms, 2 Bathrooms
For 4 guests





Raising the rafters. Loft-style living that savours the soaring proportions of this former photography studio

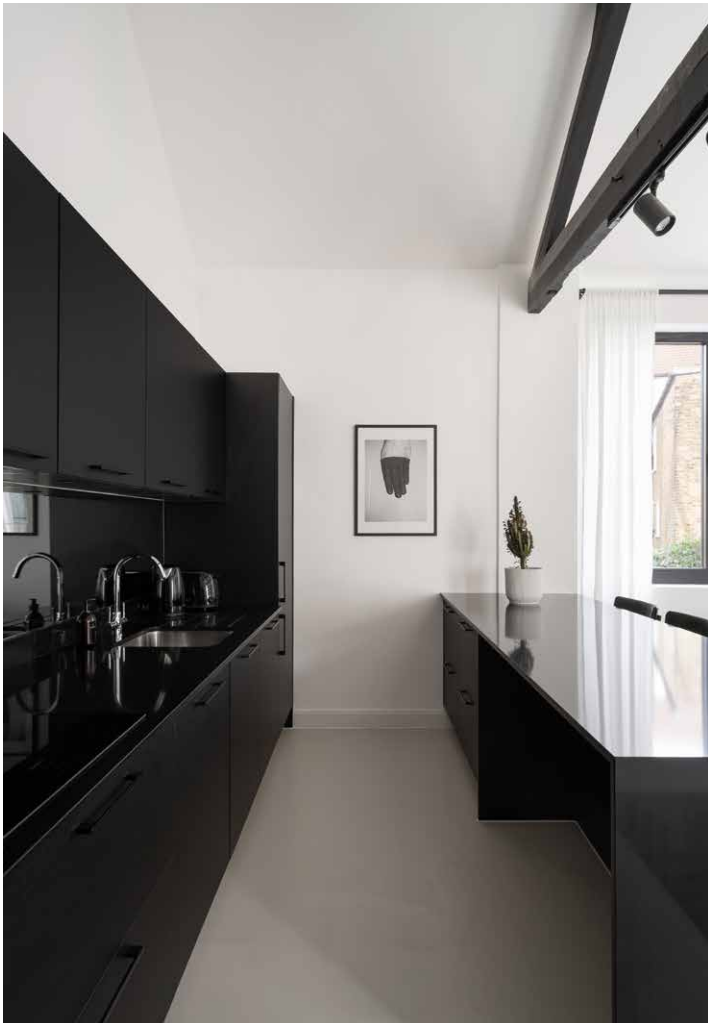
Space and light are words that spring to mind as you step inside this penthouse, which once served as a location for photoshoots. The sleek white walls are reminiscent of seamless paper – the go-to backdrop for many shutterbugs – and nod to the building's past. So does the vaulted ceiling, which draws the eye upwards to where exposed ebony joists command attention and well-angled spotlights scatter light throughout the open-plan living and socialising hub.

Part of a boutique development reimagined by interior designer Tala Fustok, the apartment's pared-back finish offsets its period bones. History collides with industrial accents, like the black lattice of the Crittall-style doors to the terrace that contribute a cleaned-lined symmetry. Contrasting wooden and Chroma flooring is used to subtly carve up the space into different zones for eating, lounging and cooking.





A matt-black Häcker kitchen competes with the soaring ceiling for attention, with light ricocheting off the surfaces courtesy of a mirrored splashback that adds to the feeling of space.



“

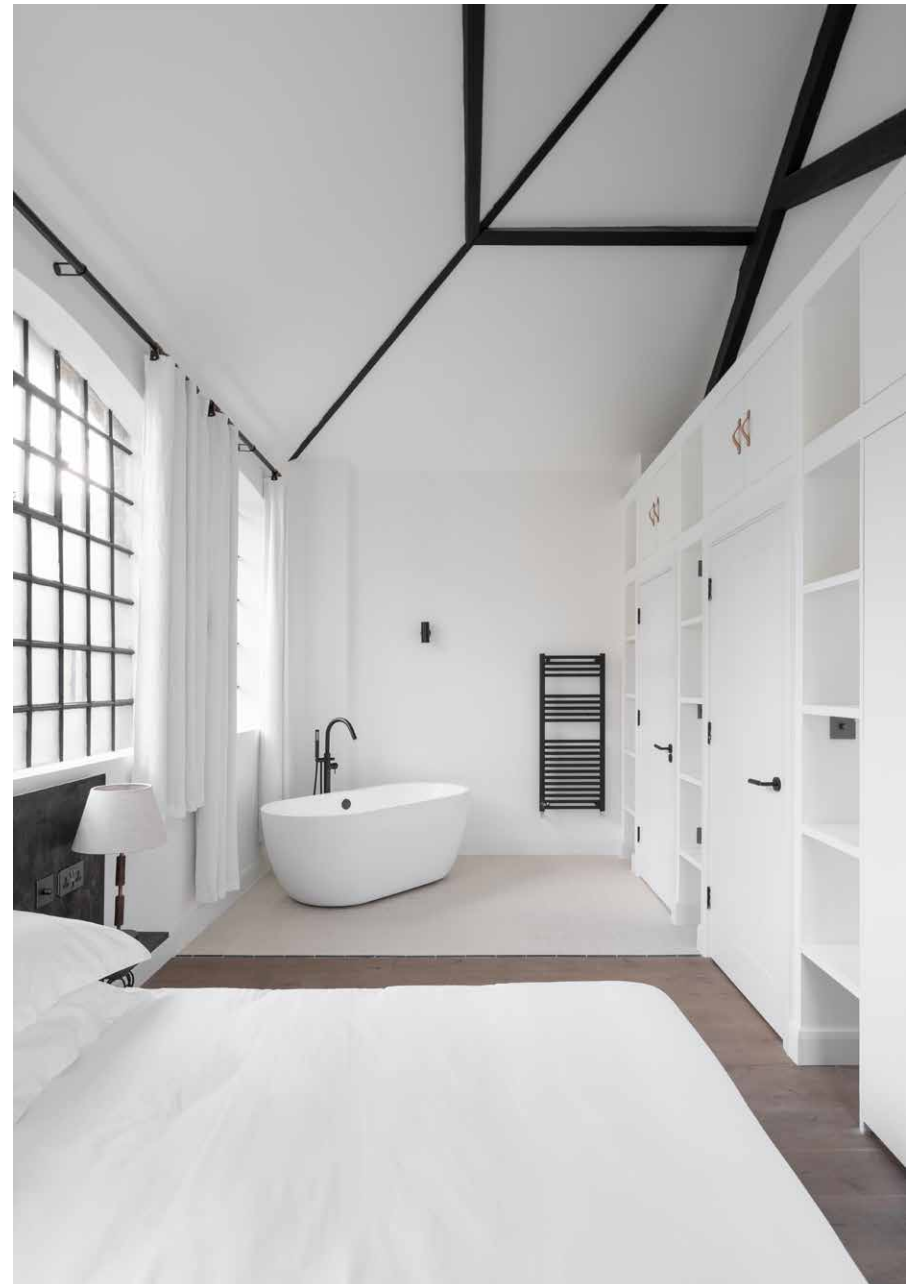
A sleek breakfast bar is the perfect spot to linger over a leisurely meal.





Take the party outside to the lawned terrace where you can admire the original brickwork of the building, drink in hand.

There's a soothing ambiance to the sleeping quarters. A double with tactile wooden headboard is cosy and inviting, but the master suite is the real showstopper – all exposed beams, restored Crittal windows and a freestanding sink-in tub that wouldn't be out of place in a chic spa hotel. Continue the pampering in the en-suite. Soft lighting adds to the soothing ambiance, while ample storage ensures the space is uncluttered and free of distractions. In the main bathroom, sage green Solus tiles provide an unexpected pop of colour to the monochrome theme and make the large rainfall shower, with Crosswater fittings, even more tempting.





LOCATION

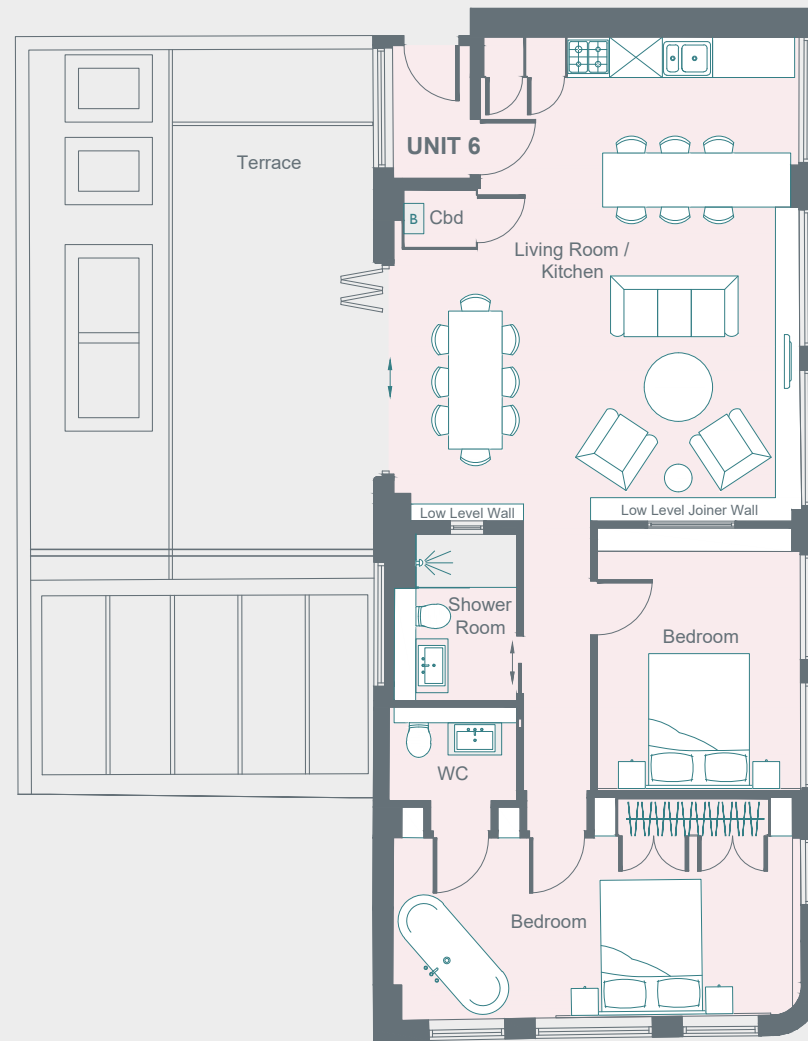
A short stroll from family friendly Queen's Park - where a string of independent businesses and 30-acres of green space await.

Peruse the paperbacks at Queen's Park Books and the well-stocked wine fridges at The Salisbury Wine Store before tucking into an Australian-inspired brunch at Milk Beach or shopping for beautiful blooms at Scarlet & Violet. To get the blood pumping, limber up for a game of tennis in Queen's Park, or for a more relaxing – and altruistic – activity, venture a little further up Chamberlayne Road to the Lexi, an independent cinema run by volunteers, with all proceeds going to charity.



PROPERTY HIGHLIGHTS

- Penthouse with high ceilings
- Open-plan reception room
- Master suite with freestanding bath
- Further en-suite bedroom
- Adjoining terrace
- Unique design features
- Exposed wooden beams
- Light and airy



First Floor



Please don't hesitate to get in touch if you have any questions or require any further information.

hello@domusstay.com

+44 (0)20 8168 8880

Domus Stay provides the perfect combination of property, place and personal service for the world's most remarkable people. If you have any questions, or if we can help in any way, please contact us on the above number. Be it about a property you have, a property you want, dates to check or any special requirements you may need, we'd love a chat.

