

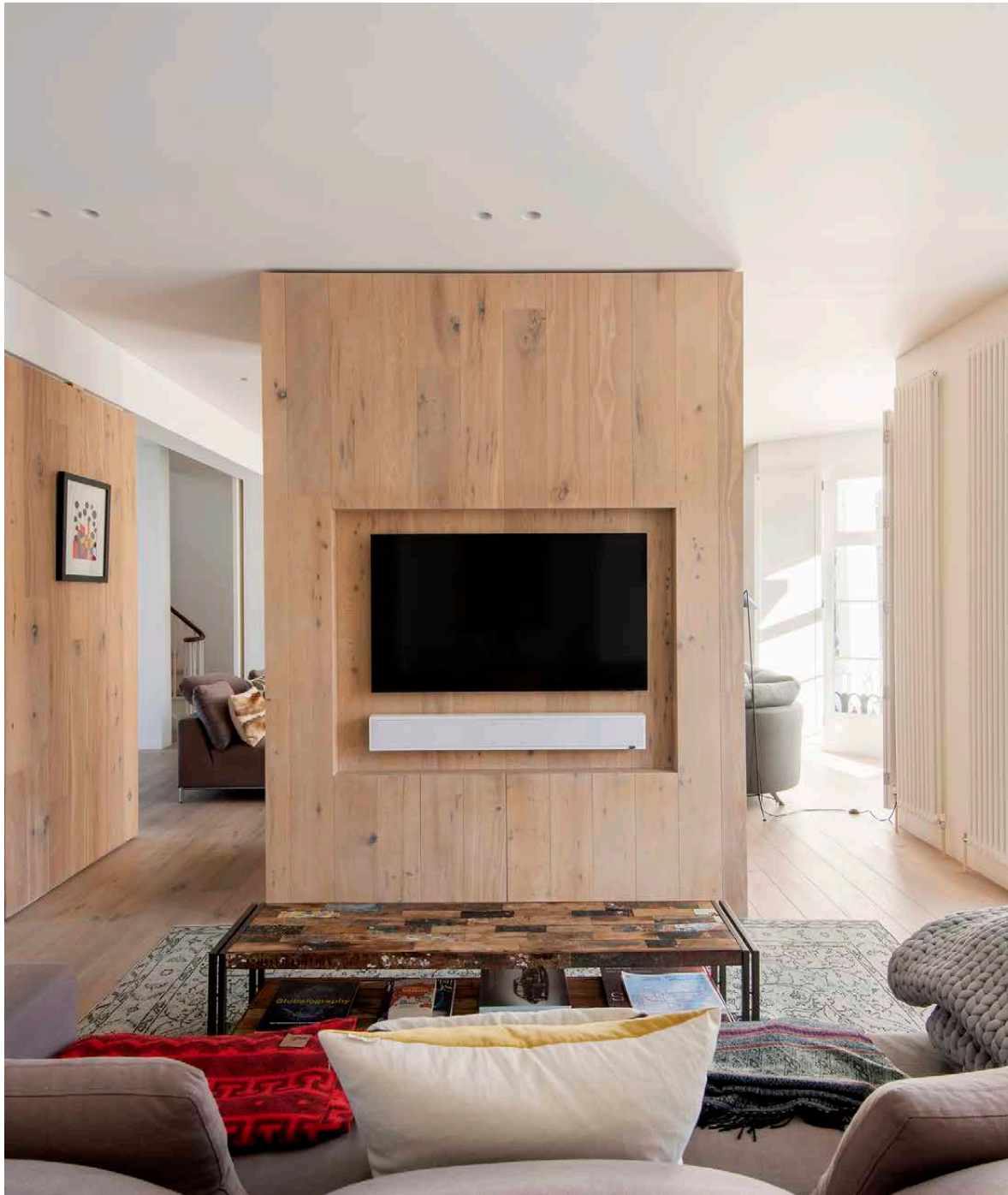
domus
stay.

Caithness Road

Brook Green W14

5 Bedrooms, 4 Bathrooms
For 10 guests





A finely tuned palette of organic materials breath warmth into this five-bedroom double-fronted villa, set in the welcoming neighbourhood of Brook Green.

Designed by architect Denis Balent of Urban Future Org Architects, this five-bedroom property is united by natural textures, clean finishes and an abundance of natural light. As you walk down the peaceful residential street, a tone of refined grandeur is set in motion by the home's exterior. Behind cast-iron fencing, an immaculately presented façade is complete with two separate portico entrances, reached by a set of stone steps.

Ascend either side to enter the property, where sets of doors introduce a spacious double reception room. Its historic architectural framework is brought into the 21st century with contemporary vision; the large footprint has been zoned at its centre by a pale wood partition wall. A modern fireplace and sleek television have been neatly engineered on either side, making for two distinct social spaces. Swathes of sunlight pour through two large bay windows, illuminating the soft interior palette and flawless finishes. At the rear, a glass balustrade frames a double-height void. Natural light is channelled through oversized picture windows that span the voluminous vertical drop. Spot the original Eero Saarinen chairs and coffee tables here.



The merging of two period townhouses into a duplex villa makes for unparalleled amounts of living space. There's outstanding symmetry throughout: the front entrances, staircases, bay windows and bathroom vanities all come in pairs of two.

“

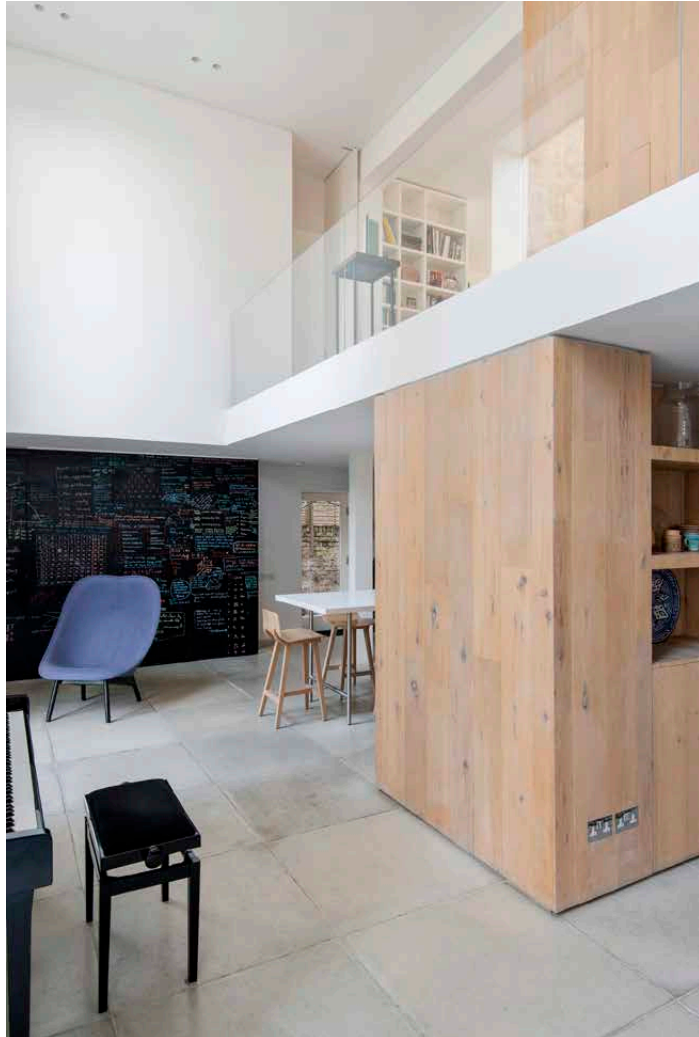
From the television snug to the landscaped garden, there's space for everyone to spread out at Caithness Road.



The natural palette of materials is effortlessly continued to the lower-ground floor kitchen and dining room, delineated into two halves to match the floor above. Form meets function in the Italian-crafted Boffi kitchen, with integrated Miele appliances and a smooth-topped island – complete with handcrafted breakfast stools. On the other side of the row wood-panelled cupboards, there's a reclaimed wooden dining table from the ports of old Cape Town. State-of-the-art Flos Parentesis lighting casts a soft glow come evening, while an integrated Sonos sound system is tailor-made for entertaining.







Period proportions are accentuated with a double-height void and an abundance of glazing.



The ground and lower-ground floors mirror each other with a bespoke wooden partition wall.

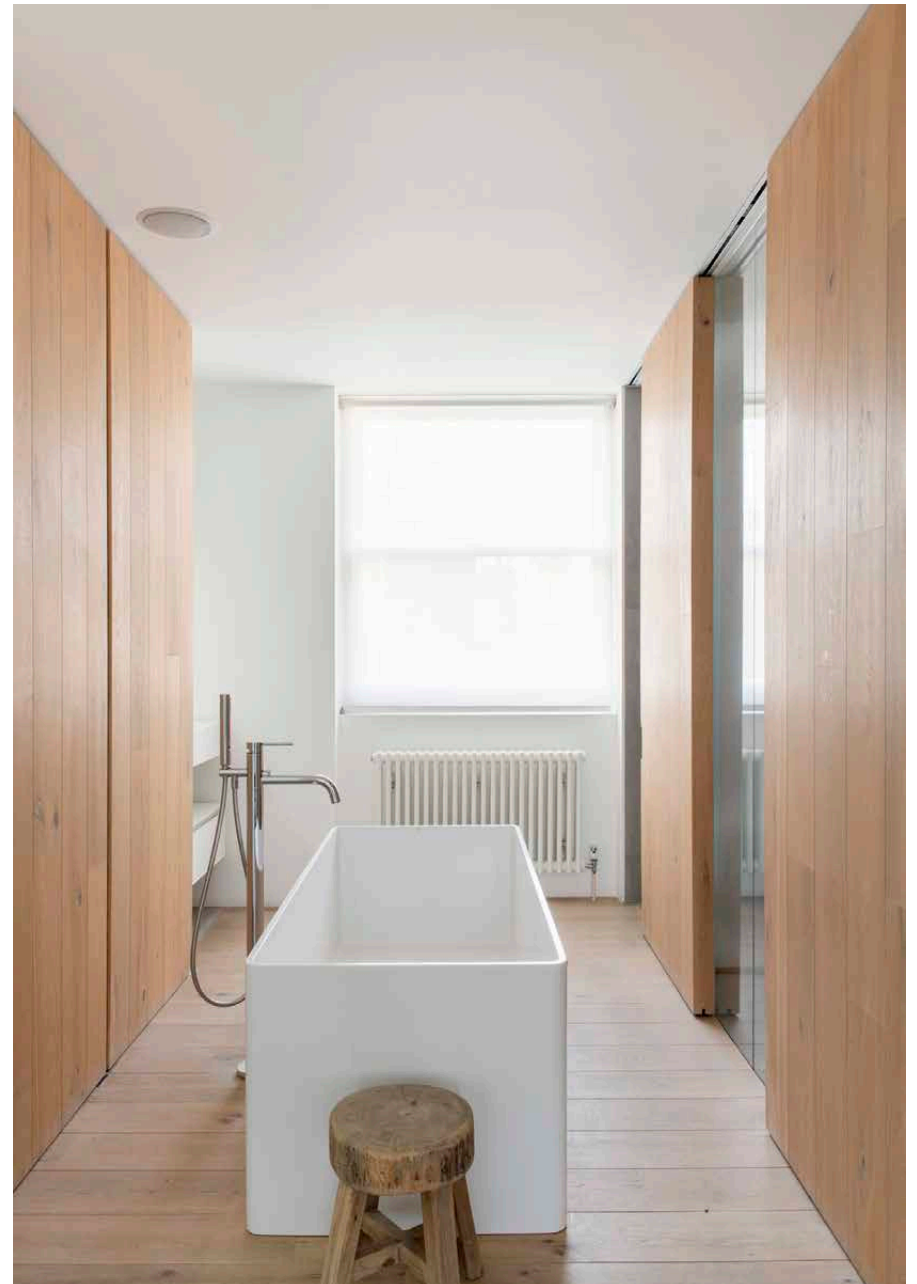
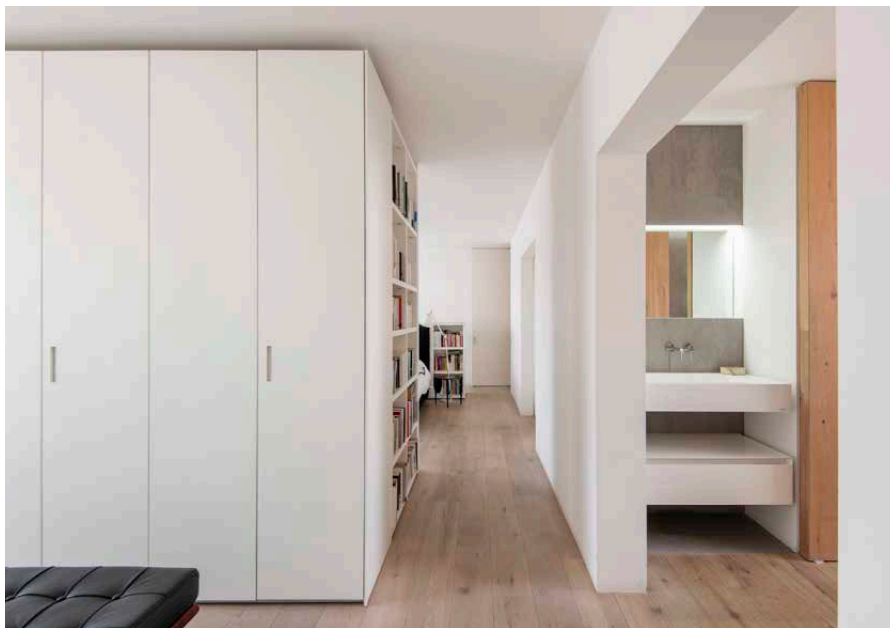




Occupying the entire first floor is the principal bedroom suite, crafted with a calming and minimalist Scandi-esque aesthetic. Whitewashed walls and light wood flooring runs from the sleeping area into the dedicated dressing area – complete with floor-to-ceiling wardrobes. Through clean-line archway, spa-like serenity abounds in the bathroom. A rectangular freestanding tub sits at its centre, surrounded by twin vanities and an inviting rainfall shower. Four further bedrooms unfurl across the second floor, each with vaulted ceilings and understated décor. Three contemporary bathrooms and a suntrap roof terrace complete this storey.



With an interior palette crafted from pale wood, soft stone and minimalist furniture, that coveted Scandinavian style comes to life across the home's four storeys.







The private garden is one of the largest in west London. Its expansive footprint features an array of seating areas and a verdant lawn that's staggered on two levels. The double-width brick exterior is clad in climbing wisteria – a charming backdrop for al fresco dining, courtesy of the Weber barbecue.



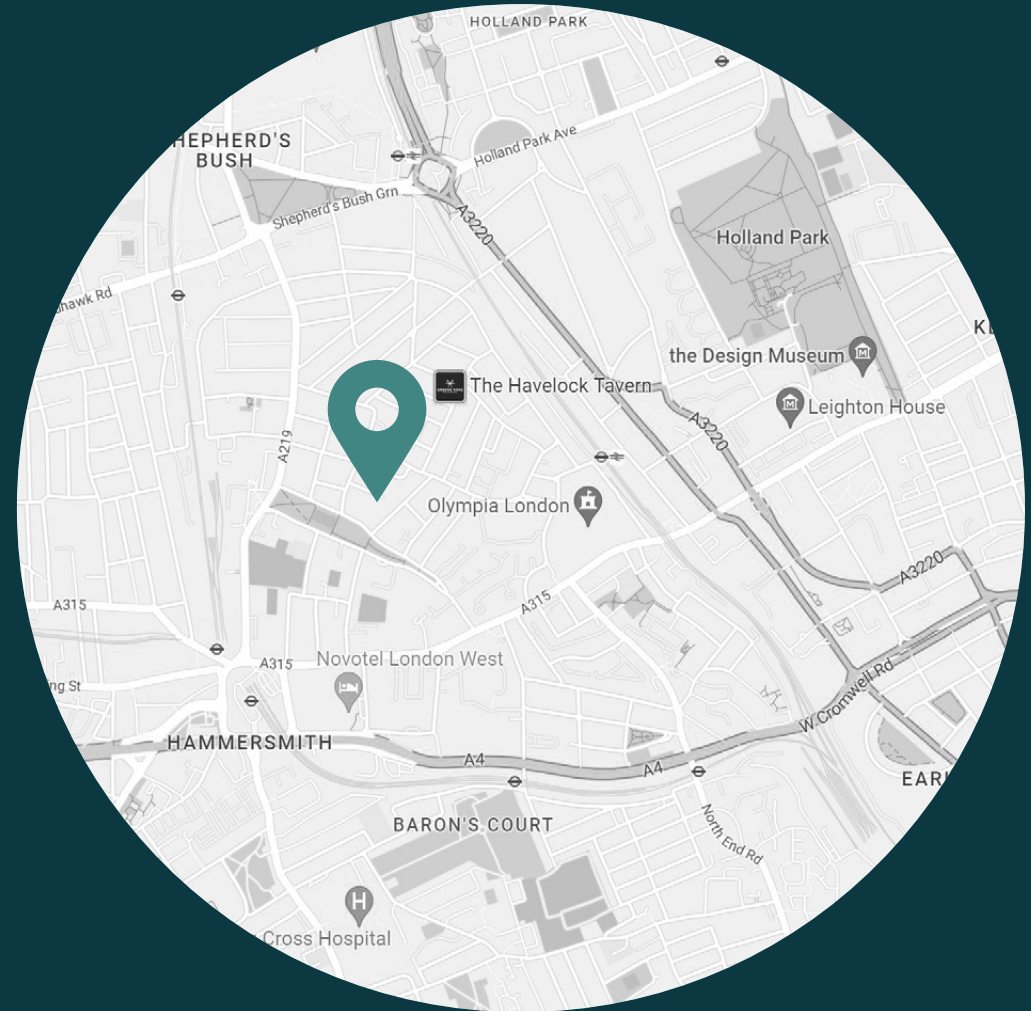




LOCATION

There's an inviting sense of community to Brook Green - it's a neighbourhood of committed localists, nestled amidst the bustle of Shepherd's Bush and Hammersmith.

On Saturdays, pick up organic produce from the local farmer's market or bring your racquets to Brook Green Tennis Courts for a game. Grab a coffee on Blythe Road and browse the array of artisanal boutiques, followed by a drink at the Havelock and pizza at the Bird in Hand. Westfield Shopping Centre's world-class retail offerings are a short walk away. For music lovers, check out what's on at the Grade II listed art deco Eventim Apollo or Shepherd's Bush Empire. Plus, there's plenty of tube lines close by to get you around the rest of the city with ease.



PROPERTY HIGHLIGHTS

- Double width villa with two entrances
- Double reception room
- Open-plan kitchen and dining room
- Television snug
- Principal bedroom suite with dressing area
- Four further bedrooms
- Three further bathrooms
- Private garden
- Terrace
- State-of-the-art technology
- The London Borough of Hammersmith & Fulham





Please don't hesitate to get in touch if you have any questions or require any further information.

hello@domusstay.com

+44 (0)20 8168 8880

Domus Stay provides the perfect combination of property, place and personal service for the world's most remarkable people. If you have any questions, or if we can help in any way, please contact us on the above number. Be it about a property you have, a property you want, dates to check or any special requirements you may need, we'd love a chat.

