

domus  
stay.

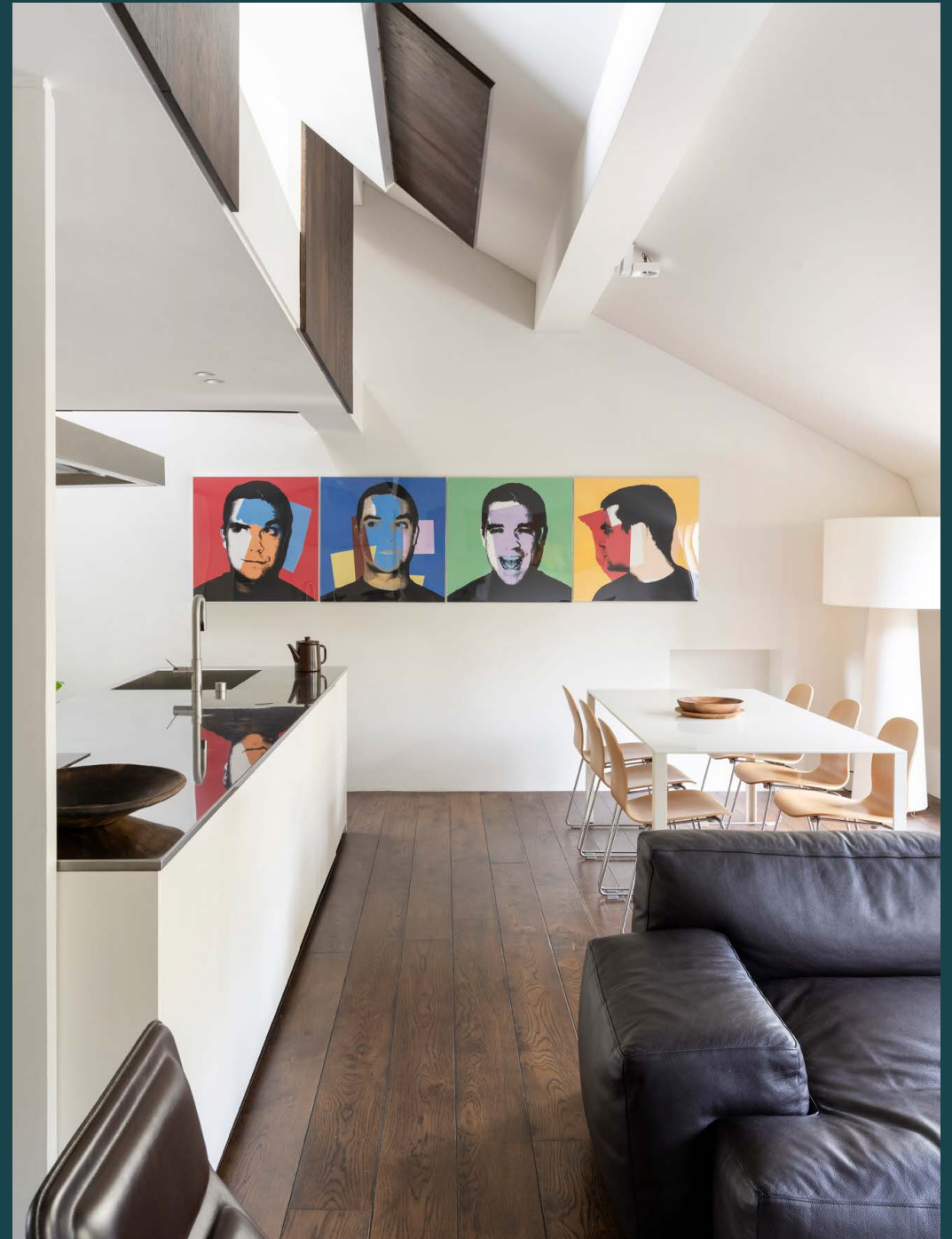
---

## Westbourne Terrace

Paddington W2

3 Bedrooms, 3 Bathrooms  
For 6 guests

---





## Heritage grandeur meets midcentury-modern design at this two-bedroom duplex apartment in Bayswater.

With its elegant Georgian façade, Westbourne Terrace hints at a home with history. Inside, however, design by Urban Future Organization and Andre Furstenberg creates a top floor duplex that's decidedly distinct from what its exterior suggests.

Poised for easy living and entertaining, an open-plan kitchen, dining and reception room unfurls from the entrance. Embracing a midcentury-modern aesthetic, earthy hues sweep through the space. A pared-back palette of tones highlights the clean lines of the room – drawing focus to a sleek white Boffi kitchen. Juxtaposed with a dark wood panel overhead, a bright stainless steel topped island allows simultaneous socialising.

Dining takes place opposite, with a Jean Nouvel table aptly placed to embrace the soft glow of a Big Shadow lamp by Marcel Wanders. Post-dinner, wind down in a space designed for socialising, complete with Cassina and Cappellini sofas, plus two Jasper Morrison Low Pad Lounge Chairs. Vibrant art by Andy Warhol adds a touch of 60s whimsy. On warmer evenings, savour starlit skies and leafy views from the enclosed balconette.





Skylights and sash windows create uplifting spaces with a welcoming warmth.



“

Embracing a midcentury-modern aesthetic, earthy hues sweep through the space.







Minimalism ensues in the principal bedroom suite, where a calming white canvas allows natural light to bounce across the room. Soft furnishings dress the Jasper Morrison bed, infusing a dash of colour. With spacious integrated wardrobes and a glass clad en suite with a sky-lit bathtub, mornings are a relaxed affair.

Dark wooden floors sweep seamlessly through to the guest bedroom, considerately styled with artwork by Titia Ballot. Twin sash windows invite in soft natural light, creating a soothing space to unwind. On leisurely afternoons, pick up a book and settle into the Frank Gehry Wiggle chair. Suited to those who combine work with play, an entire wall of shelving frames a built-in desk.











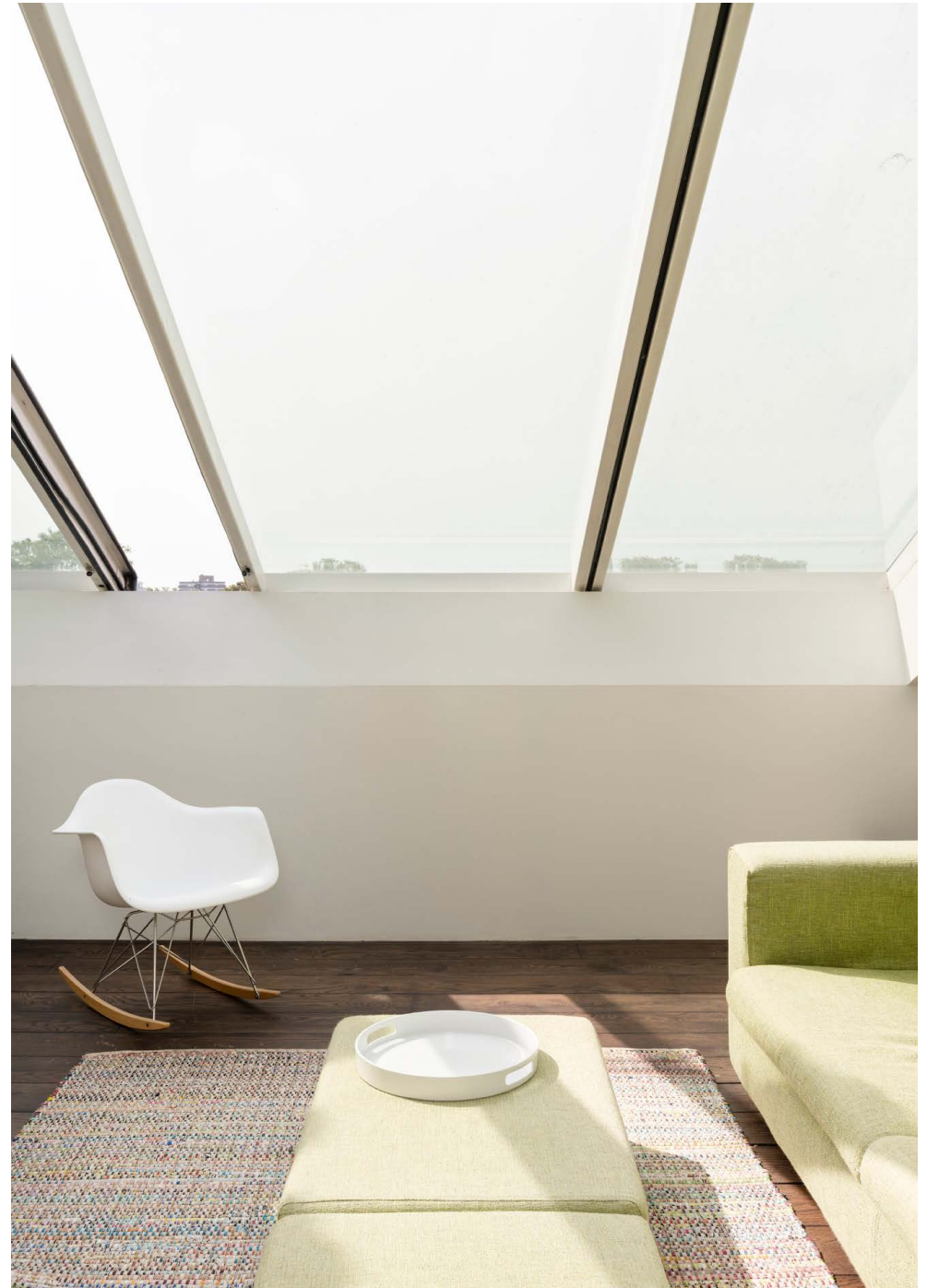








Across the top floor, reams of natural light flood a versatile lounge area for relaxing, studying or loading up a workout on the Apple TV. Fitted with a WC and glass framed shower, this is an ideal space to accommodate occasional guests.









## LOCATION

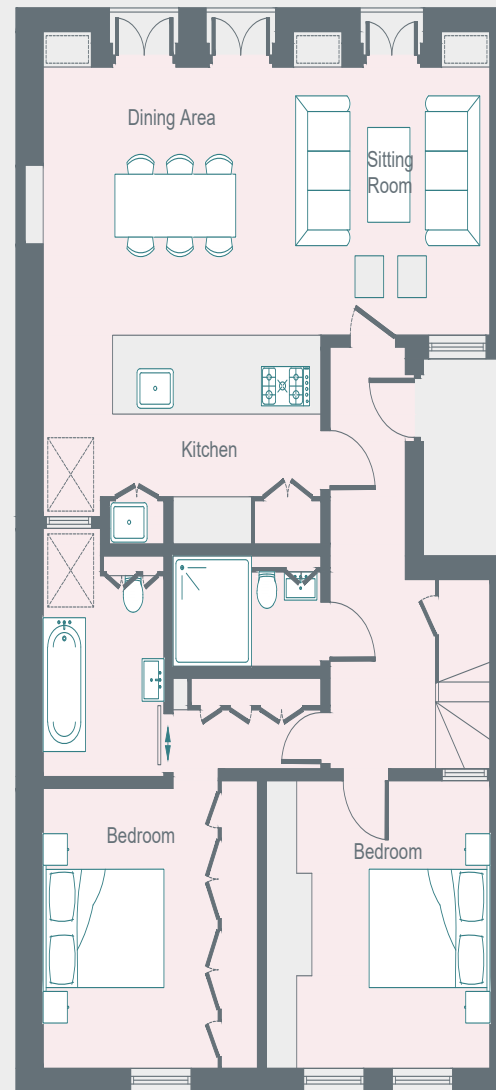
With Paddington station a stone's throw away, Westbourne Terrace is a stepping stone to central London and beyond.

Well positioned for more meditative moments, walk along to the peaceful canals of Little Venice. Stop by Canal Café Theatre or the Puppet Theatre Barge for an afternoon's entertainment. Stroll along to Westbourne Grove for a coffee-stop, then browse an array of boutiques. A short walk southwards, Hyde Park's Italian Gardens are a picturesque place to unwind with carved historic pools, fountains and walking paths. Stop by local favourite The Swan en route home for a drink.

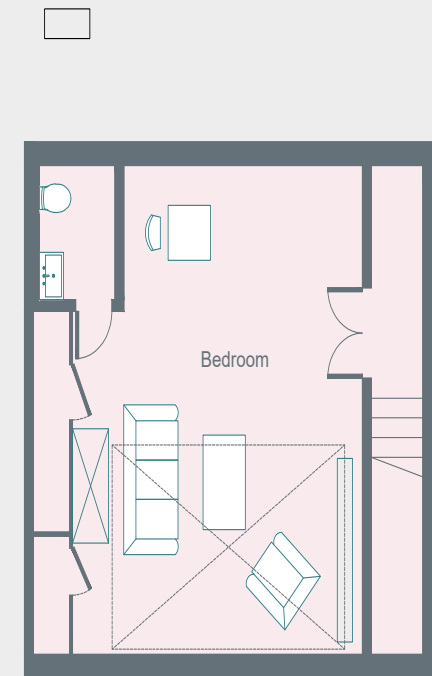


#### PROPERTY HIGHLIGHTS

- Open-plan kitchen, dining and reception room
- Principal bedroom suite
- Guest bedroom
- Versatile living space with en suite bathroom
- Shower room
- City of Westminster



Fourth Floor



Fifth Floor





Please don't hesitate to get in touch if you have any questions or require any further information.

---

[hello@domusstay.com](mailto:hello@domusstay.com)

+44 (0)20 8168 8880

Domus Stay provides the perfect combination of property, place and personal service for the world's most remarkable people. If you have any questions, or if we can help in any way, please contact us on the above number. Be it about a property you have, a property you want, dates to check or any special requirements you may need, we'd love a chat.

