

domus
stay.

Stanley Crescent

Notting Hill W11

3 Bedrooms, 3 Bathrooms
For 6 guests





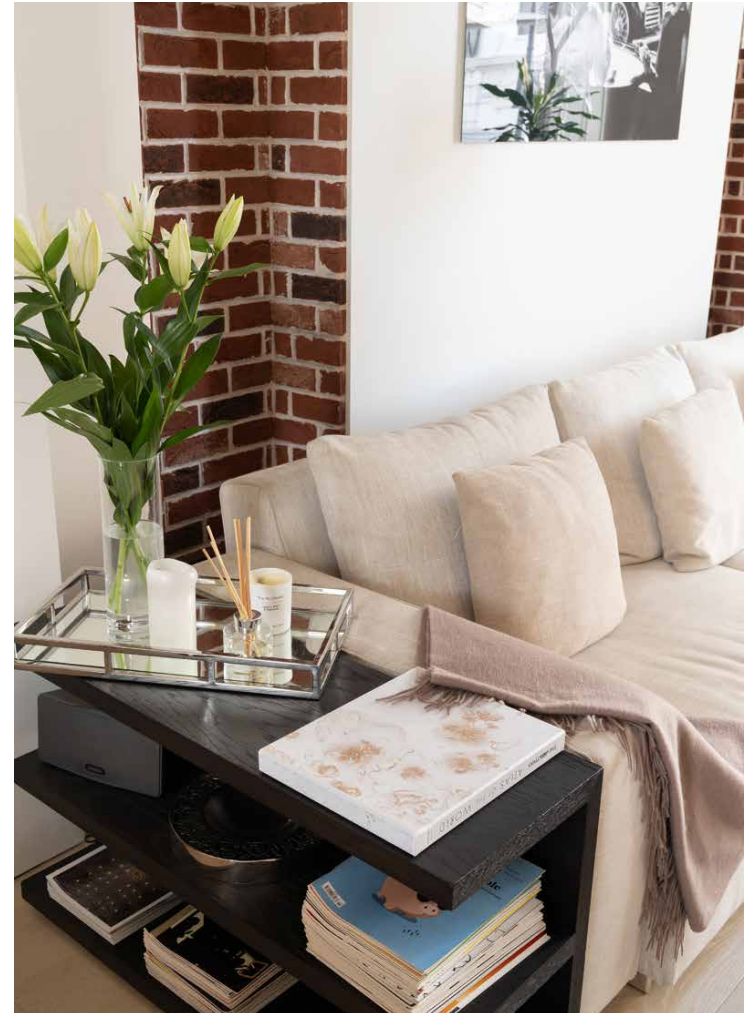
A sleek three-bedroom home with direct access to one of London's most prestigious garden squares.

Step through the smart porticoed entrance of this traditional Victorian terrace and you'll be greeted by a tranquil, contemporary space that makes the most of the high ceilings and large windows.

The open-plan reception and dining room is big enough for everyone to gather together or find pockets of privacy. Bare brick walls make for a striking backdrop for nights in with a page-turner from the shelves. Or late-evening tipples with friends – illuminated by an iconic Flos Arco lamp – on the plush L-shaped sofa. The spacious dining area is dual aspect, meaning its airy proportions are filled with light from the early morning to the late evening. Generous south-facing windows overlook the communal garden at the back – views are best enjoyed from the cream chair thoughtfully positioned next to it.







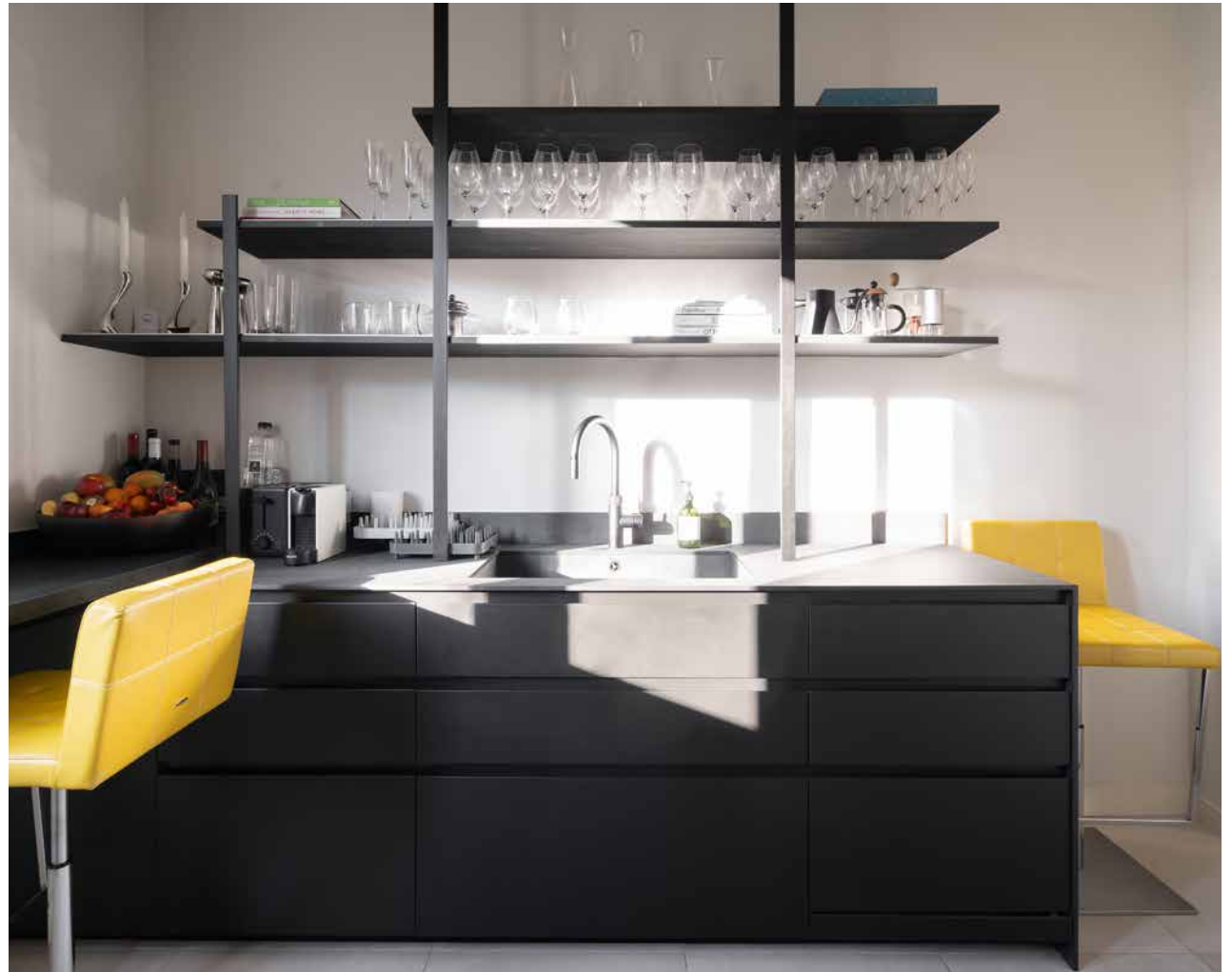


Get family and friends around the table for food and conversation. The light here is exceptional, from morning to evening.

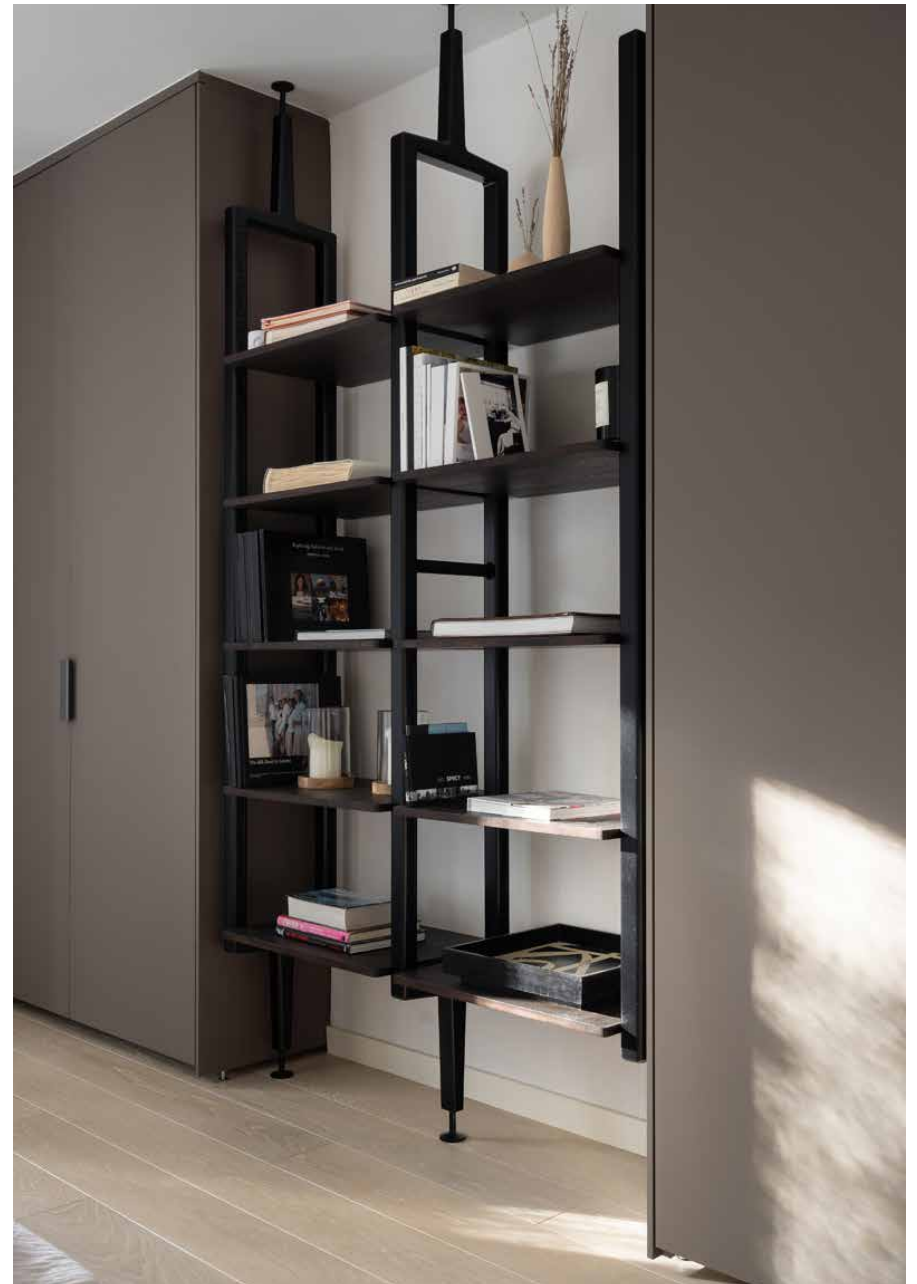
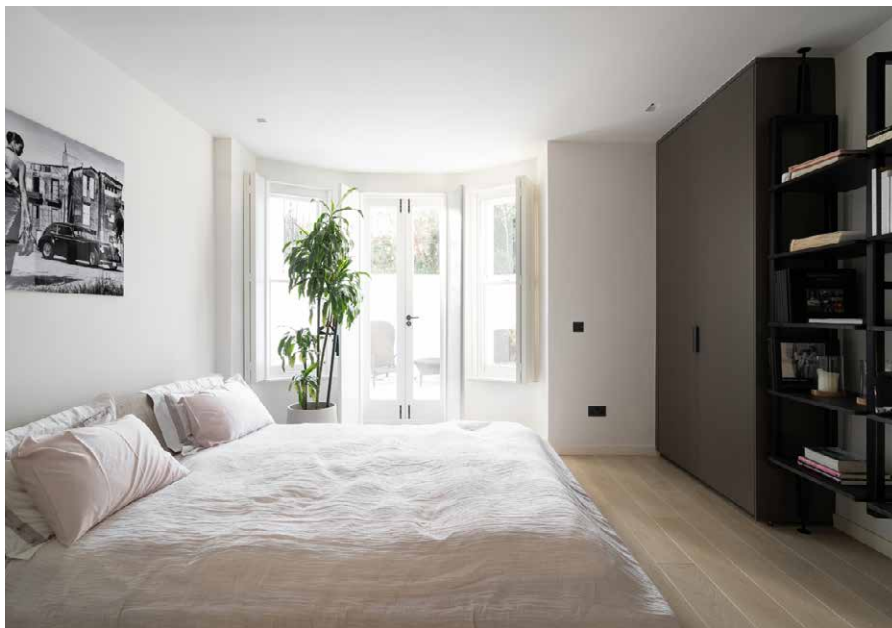
To the back of the apartment, you'll find a contemporary, charcoal-toned kitchen that perfectly combines sleek lines and practicality – imagine cooking mains on high-end built-in appliances by Siemens or pouring glasses of champagne on smooth, polished concrete counters.

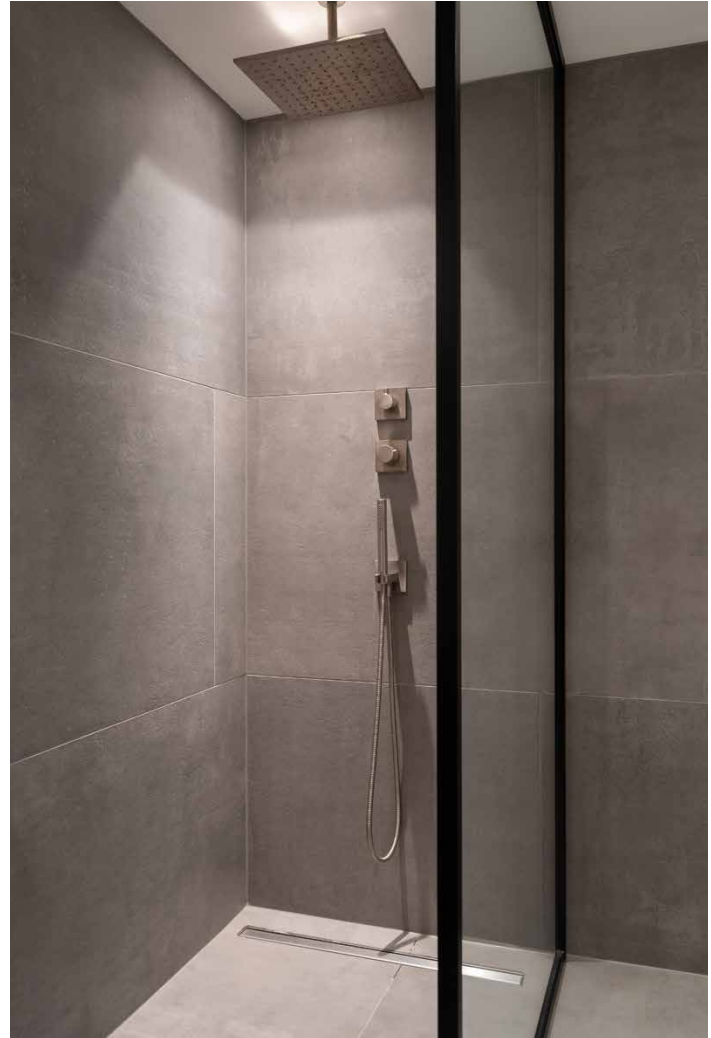
“

Traditional meets contemporary in a light-filled and spacious apartment in chic Notting Hill.



Thoughtful design continues downstairs, where three bedrooms and three bathrooms offer space for everyone. The master is situated at the back of the apartment, and here the priority is comfort, with a king-size bed, as well as room to store your suitcases in the full-height wardrobes. French doors lead onto a sun-trap, private patio, complete with all-weather rattan furniture.

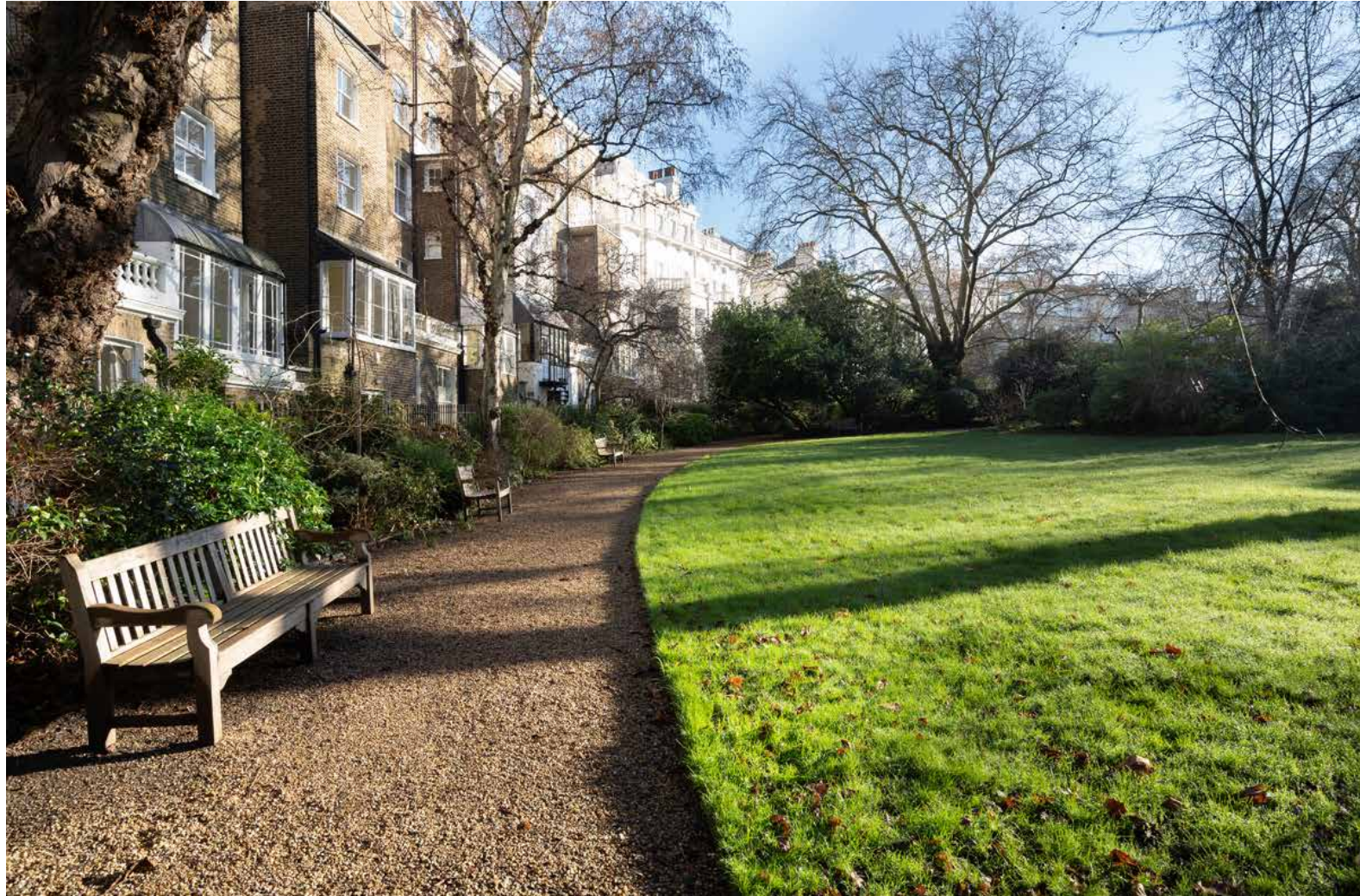




“

The kids will love the modern bunk beds in the second bedroom, and child-friendly desk built into the curve of the windows - ideal for every activity from crafting to homework.





Stanley Crescent, a manicured communal garden among west London's finest – access it directly via the patio.



LOCATION

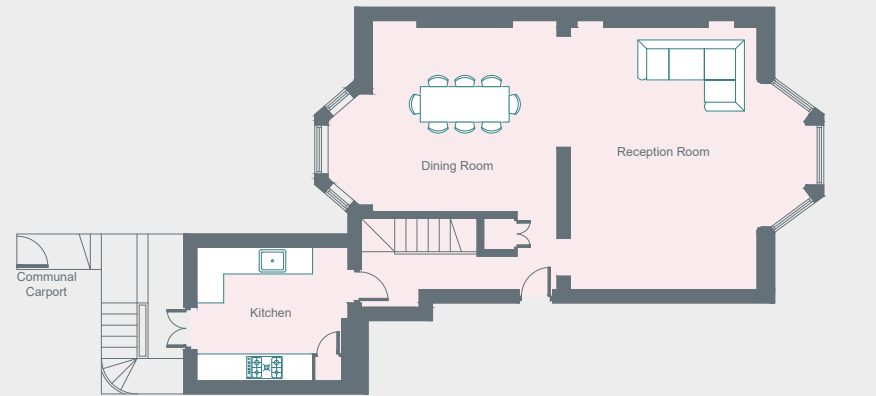
Enjoy Notting Hill's great sense of community and activities for all the family.

Explore independent shops and eateries in classy Westbourne Grove, which caters for every whim, from relaxed brunch to fine dining, or take a wander down the iconic Portobello Market with its great range of stalls. And for film buffs, the Electric Cinema is a must. Or, if it's green spaces you're after, there's nearby Holland Park, with its expansive gardens and woodland.

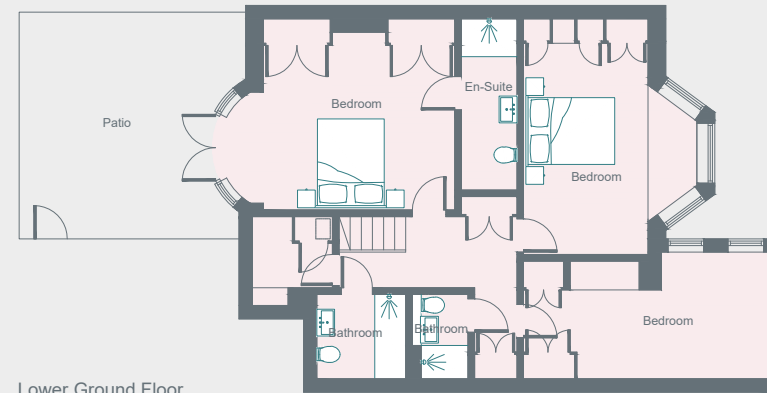


PROPERTY HIGHLIGHTS

- Open-plan living and dining room
- Separate kitchen
- Principal suite
- Two further bedrooms
- Two further bathrooms
- Private terrace with direct access to communal gardens
- Royal Borough of Kensington and Chelsea



Ground Floor



Lower Ground Floor

Approximate Area = 150.8 sq m / 1623 sq ft

Surveyed and drawn in accordance with the International Property Measurement Standards (IPMS 2: Residential)
fourwalls-group.com 820268





Please don't hesitate to get in touch if you have any questions or require any further information.

hello@domusstay.com

+44 (0)20 8168 8880

Domus Stay provides the perfect combination of property, place and personal service for the world's most remarkable people. If you have any questions, or if we can help in any way, please contact us on the above number. Be it about a property you have, a property you want, dates to check or any special requirements you may need, we'd love a chat.

