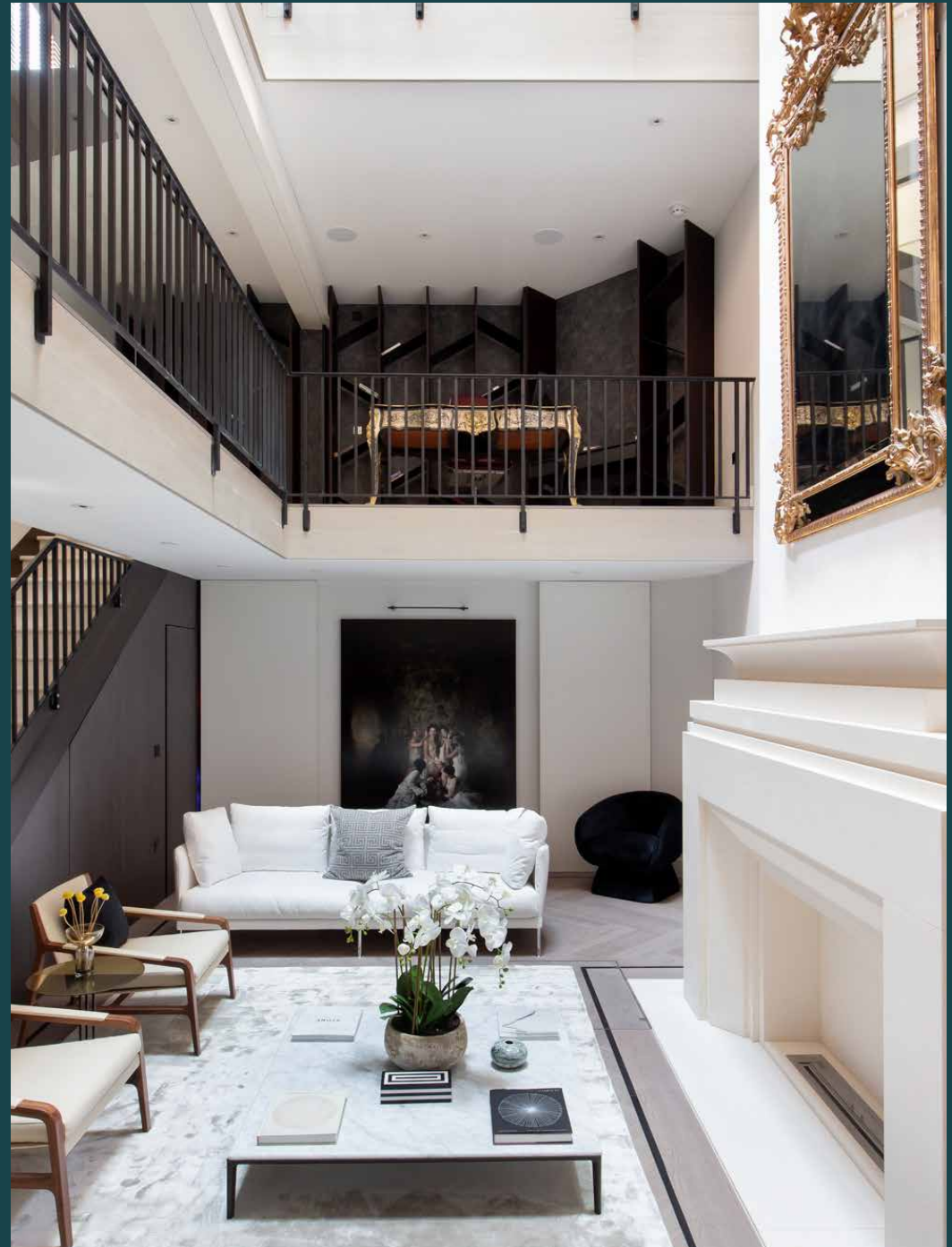


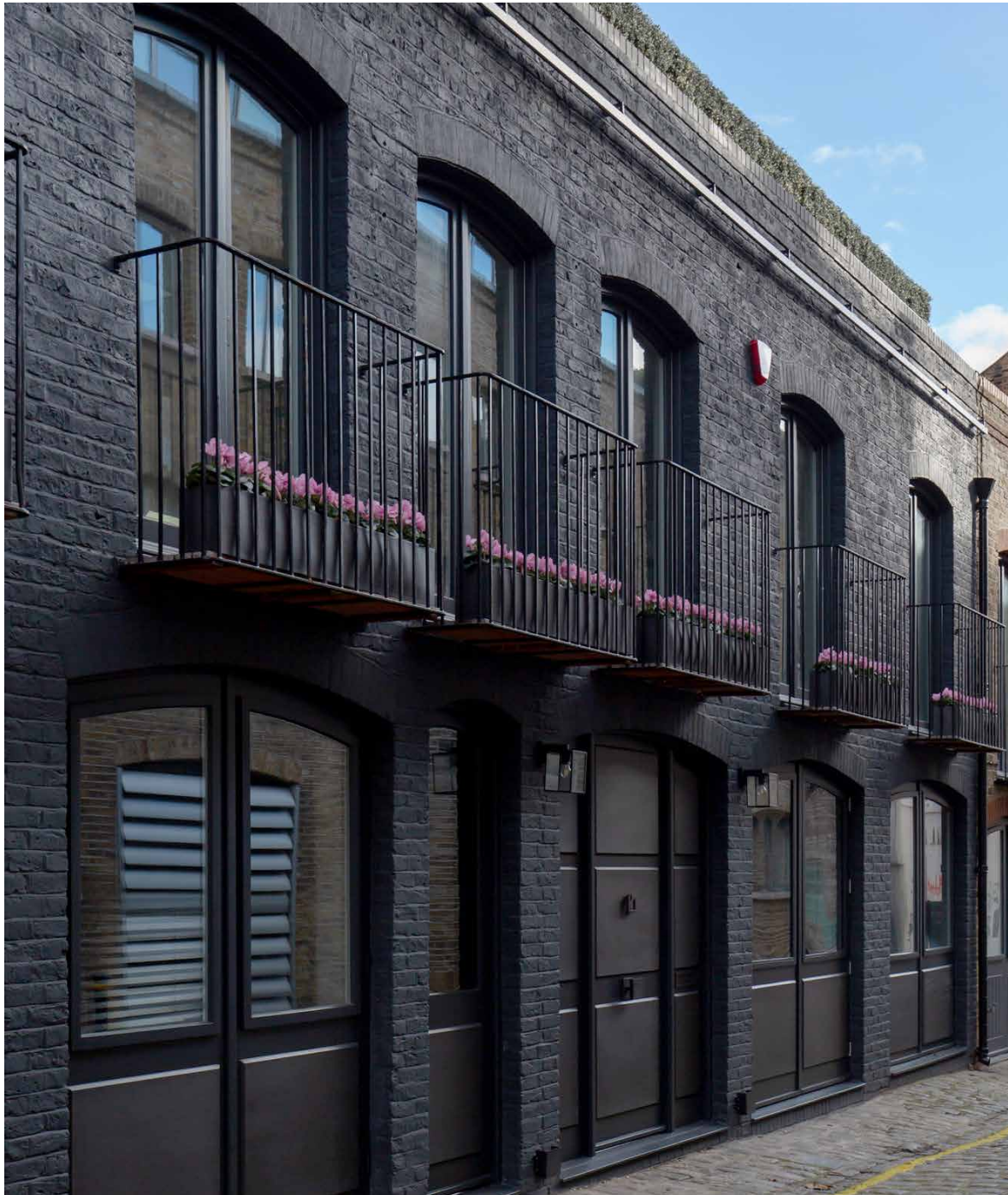
domus
stay.

Powis Mews

Notting Hill W11

3 Bedrooms, 3 Bathrooms
For 6 guests





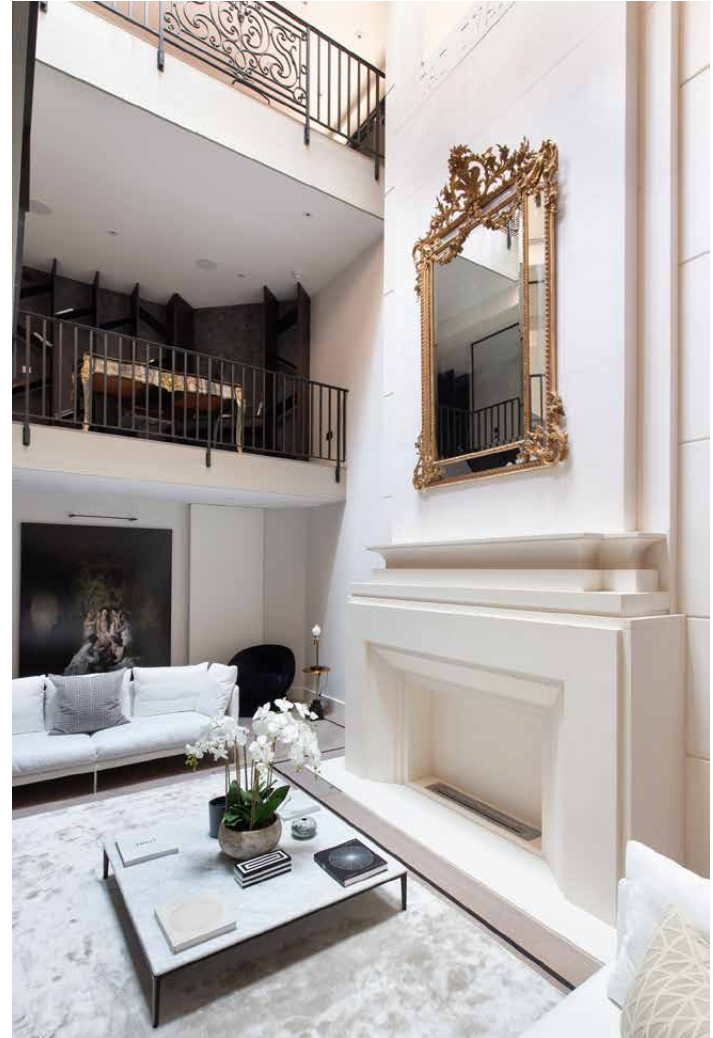
State-of-the-art design takes scale and opulence to the next level. A three-bedroom, Palazzo-style mews home with a desirable Notting Hill postcode.

With a charcoal-black facade that faces an old-world cobbled mews, Powis Mews is a house that impresses instantly. Inside, finishes are as stand-out as its exterior; marble, limestone and onyx handpicked from Italy. As you enter, there's a fantastic sense of space thanks to its open-plan layout and the triple-height void that connects the living areas.

Limestone tiles connect the ground floor, where a walnut kitchen is centred by an island-cum-breakfast bar. Chef-grade appliances and full-length wine storage are seamlessly integrated into expertly crafted joinery and bronze oxidised surfaces. In the dining area, the focal point jumps between the low-hanging lighting and vivid artwork. From here, there's an ensuite bedroom which offers a tranquil retreat from the social spaces.

A double reception room is set on the lower-ground floor, spread out across smooth parquet floors. The furnishings are sleek, and artwork is compelling, but the fireplace is the standout feature – its grand dimensions and opulent finish create a stately feel.







Downstairs to the mezzanine level, there's a study area for peaceful home working.











The principal bedroom suite is nestled on the top floor, framed by generous skylights and doors that open onto Juliet balconies – each overlooking the quiet mews. Glass walls diffuse light across its spacious proportions, from the dedicated sitting area to the elevated bed, complete with de Gournay wallpaper.

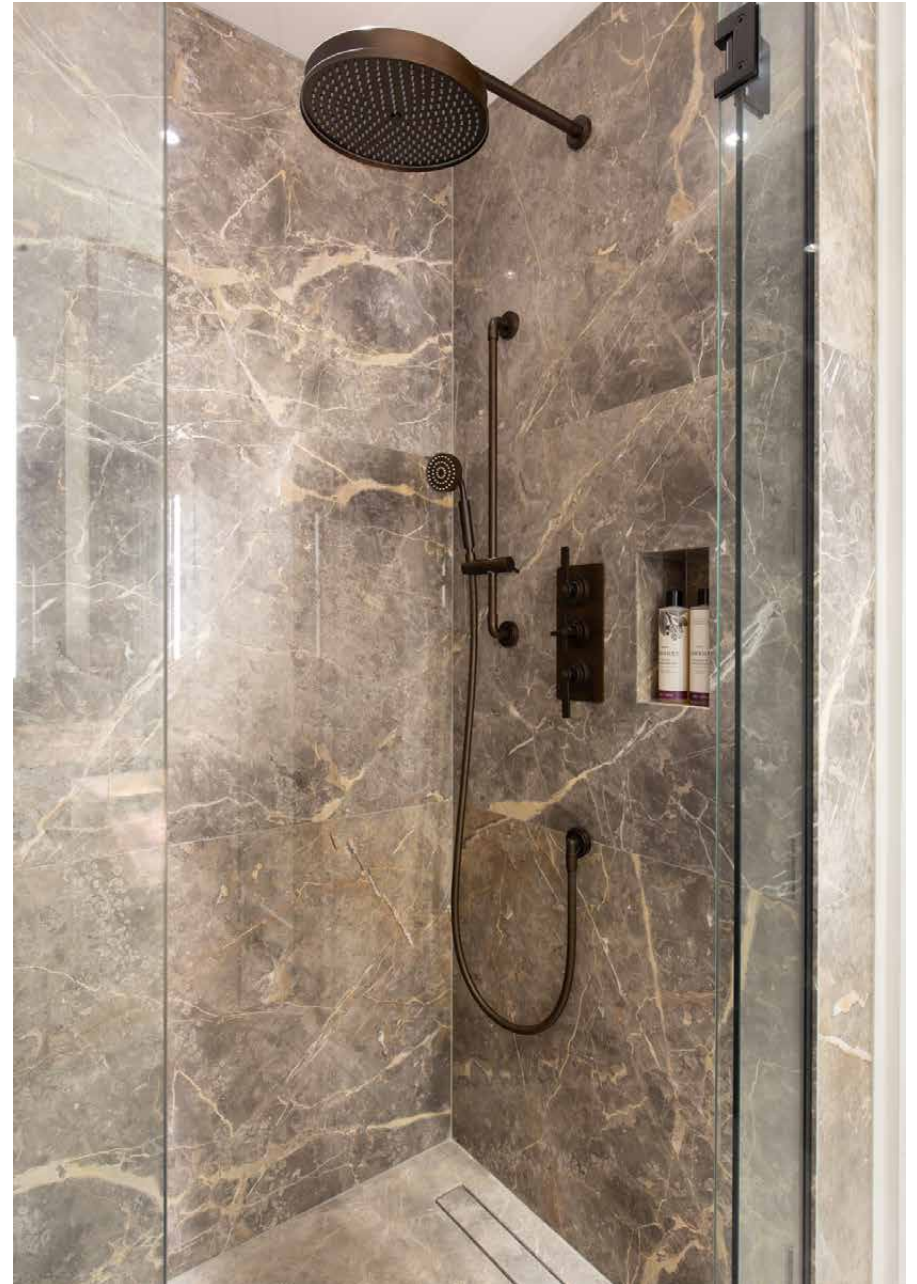
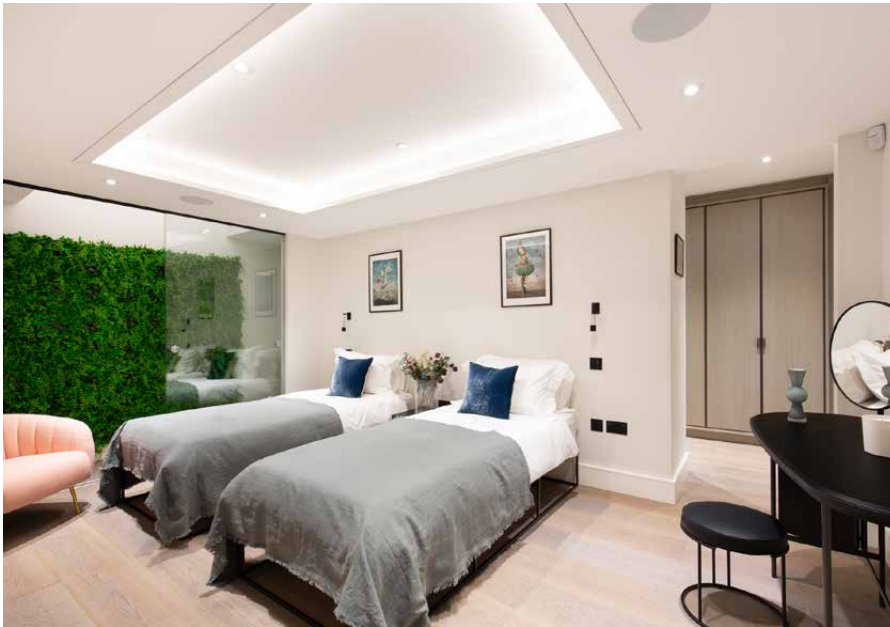
In the centre of the room, look down through the flawless glass void to the rest of the home. The bathroom is centred around a glowing pink onyx vanity. To one side is an integrated step-down bath; to the other, a timber-clad TyloHelo sauna.

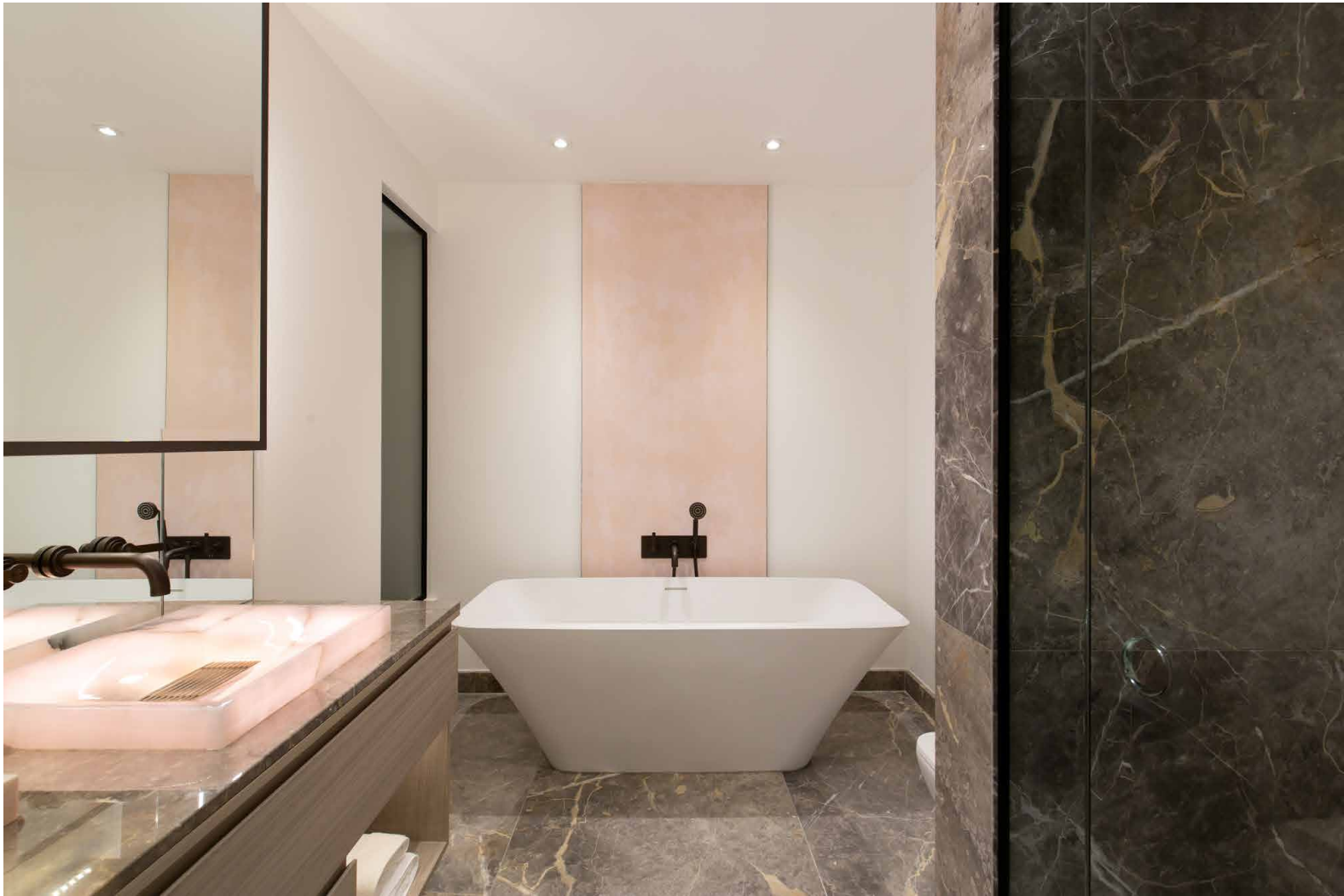






A further bedroom suite vaunts a living wall and a chic dressing area. The bathroom, fitted with a dual vanity, freestanding bath and rainfall shower, is all illuminated marble surfaces and matte black finishes.

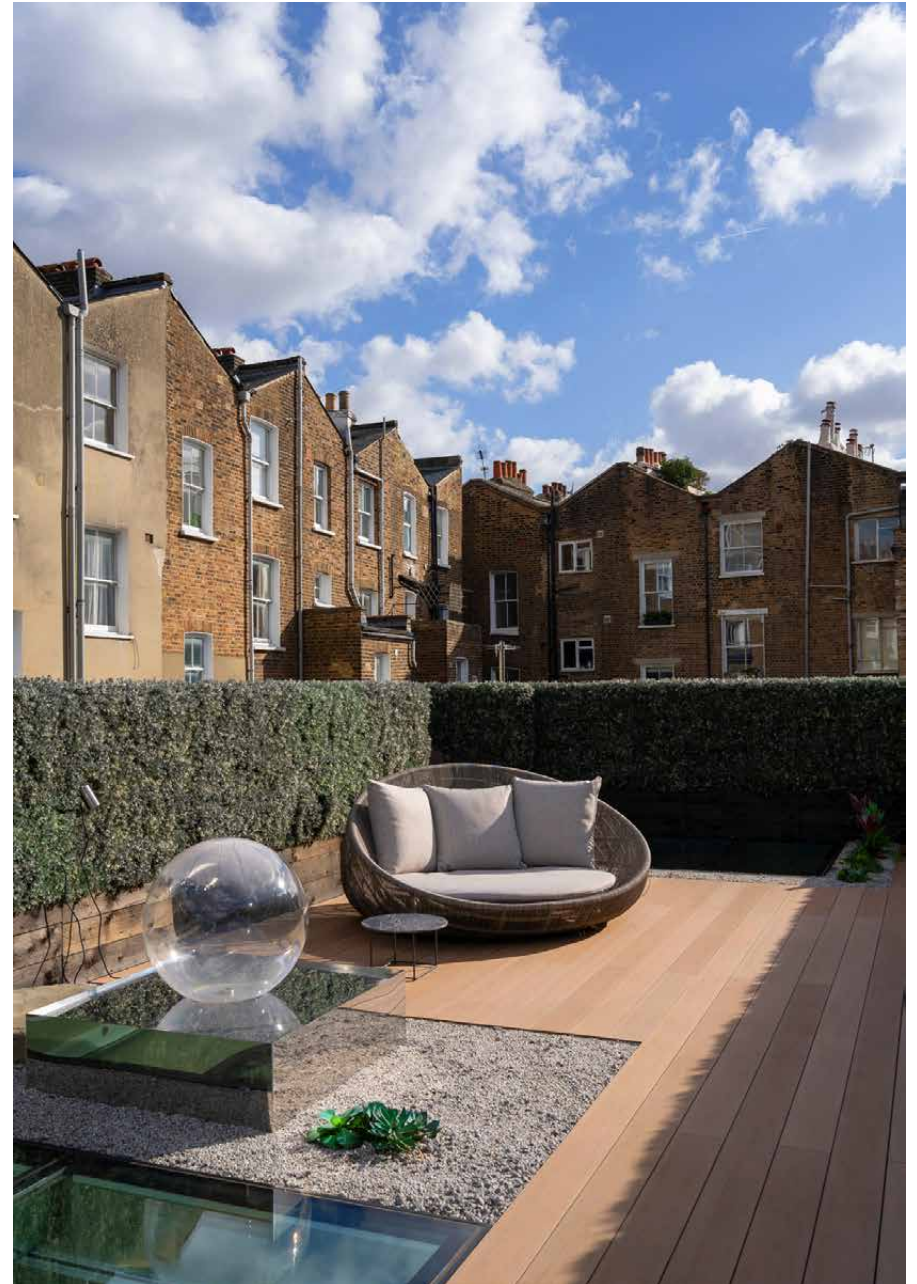
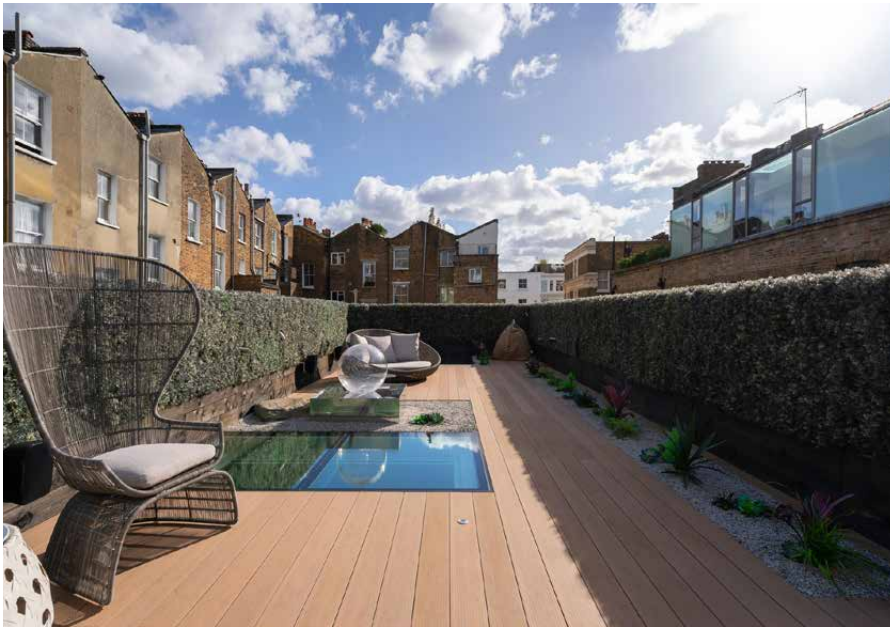






“

The crowning pièce de résistance is the decked roof terrace. Enclosed in greenery, it's a secluded suntrap in the heart of vibrant Notting Hill.





In a secluded enclave, this inky façade makes a bold statement against its neighbours.

LOCATION

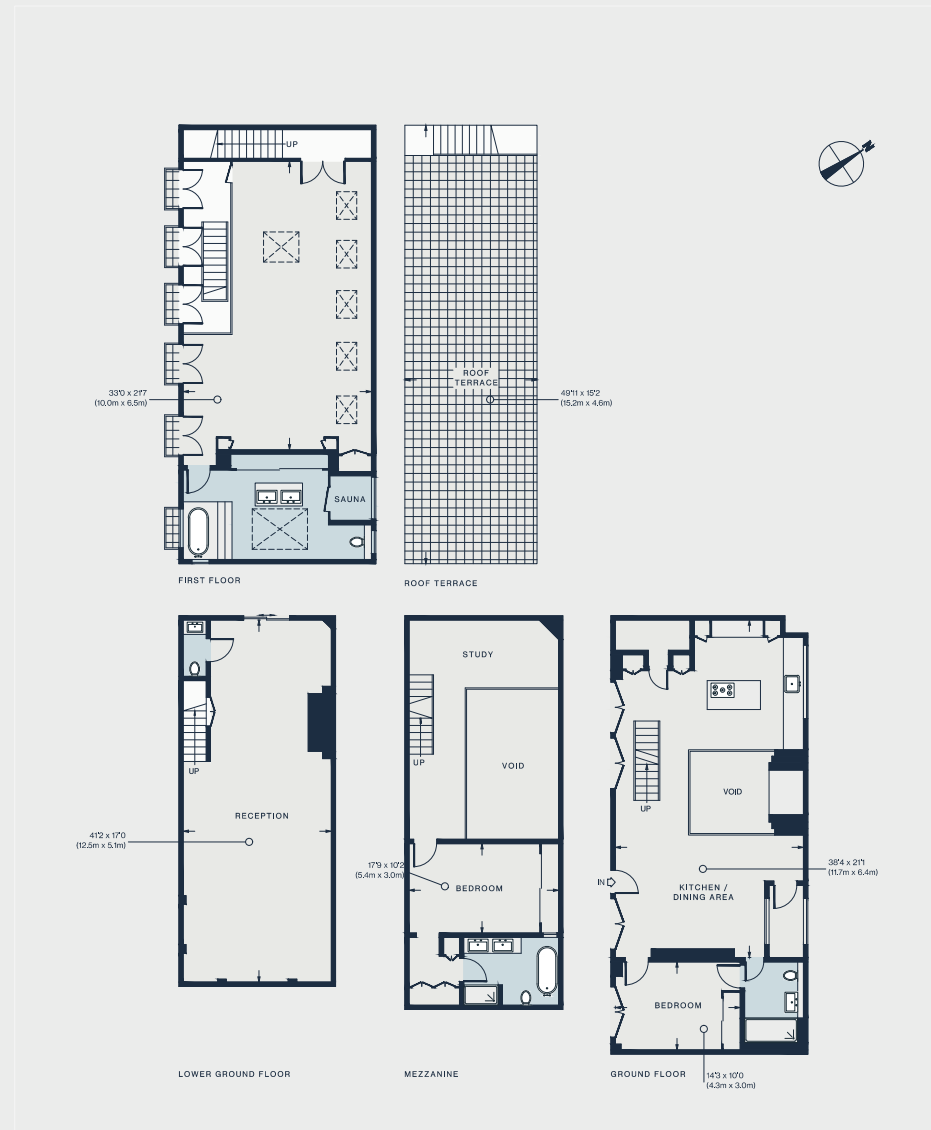
Powis Mews connects Talbot Road with Westbourne Park Road and is close to Notting Hill's best eateries, bars and independent shops.

Stroll to local favourite The Cow for Guinness and oysters, enjoy a tasting menu in The Ledbury's newly revamped dining room, or stretch your legs further in the direction of Portobello Road Market to peruse the vintage boutiques, antiques and fruit and vegetable stalls. For a breather, reach Hyde Park in 20 minutes.



PROPERTY HIGHLIGHTS

- Triplex mews house
- Triple-height void and mezzanine
- Open-plan kitchen and dining area
- Reception room
- Principal bedroom suite
- Two further bedroom suites
- TyloHelo sauna
- Study
- Roof terrace
- Royal Borough of Kensington & Chelsea



**domus
stay.**

Please don't hesitate to get in touch if you have any questions or require any further information.

hello@domusstay.com

+44 (0)20 8168 8880

Domus Stay provides the perfect combination of property, place and personal service for the world's most remarkable people. If you have any questions, or if we can help in any way, please contact us on the above number. Be it about a property you have, a property you want, dates to check or any special requirements you may need, we'd love a chat.

