

domus
stay.

Cambridge Gardens

Notting Hill W10

2 Bedrooms, 2 Bathrooms
For 4 guests





Sanctuary in the city. A two-bedroom home with a considered interior palette and thoroughly soothing character. Portobello Road is just a stone's throw away.

There's a sense of quiet elegance to the leafy rows of Victorian townhouses along Cambridge Gardens. Behind a blonde brick façade, a spacious period footprint has been elevated with expertly-designed interiors. Leave the thrum of the city behind as you enter the social heart of the home – a serene and sophisticated space with remarkable ceiling height. Teal, orange and chartreuse tones breath warmth into the whitewashed room, which is bathed in light through south-facing sash windows. It's an environment tailor-made for relaxing and socialising; cosy up with a page-turner on an armchair or host a games evening with friends around the dining table. Pick up ingredients from coveted Notting Hill Fish and Meat shop and cook up a storm in the kitchen. It's all monochromatic cool, with eye-catching details spanning the jet-black taps and white metro tile splashback.

“

The open-plan kitchen, dining and living room awaits brunches, birthdays and movie marathons with loved ones.



Where better to press pause than the tranquil master bedroom? Its spacious proportions and pared-back palette have a hushed elegance about them, with floor-to-ceiling wardrobes just perfect to store treasured finds from Portobello Road. Through a sliding door, an ensuite bathroom is a talking point of aesthetic excellence. Terracotta-coloured tiles and speckled marble floors set the scene for an oversized walk-in shower and dual vanity. A calming guest bedroom lies next door, also enjoying plenty of storage. A second bathroom matches the innovation of the master ensuite: blue and white geometric tiles are emboldened by a black-framed shower. For those dedicated home workers, an office is set for peaceful contemplation. Transform this cosy space into a third bedroom for occasional guests.





Two bathrooms are finished with impeccable attention to detail. Shower in style amongst the patterned surfaces and sleek appliances.



Both with a rejuvenating palette of materials.





LOCATION

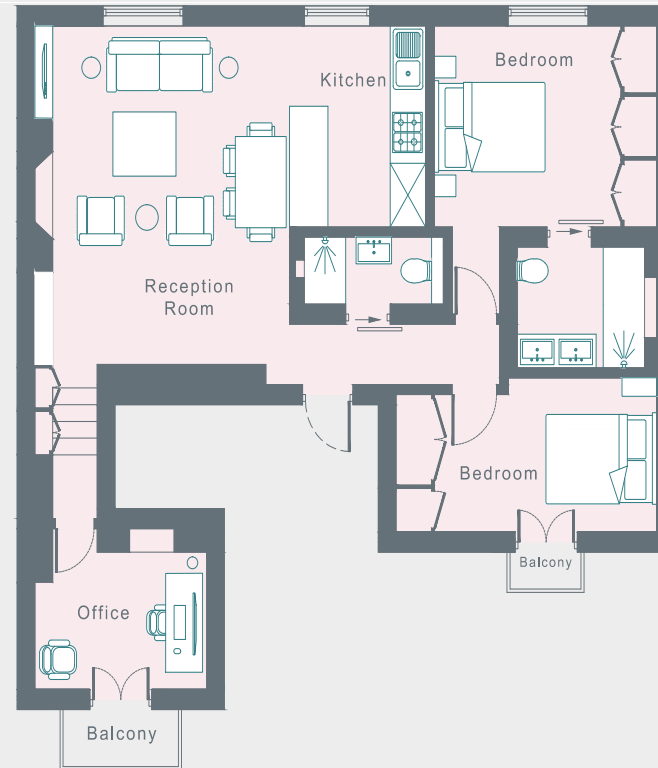
Characterised by a community of committed localists, Cambridge Gardens enjoys enviable proximity to some of Notting Hills most vibrant offerings.

The colourful thrum of Portobello Road market is on your doorstep; spend a weekend browsing its vintage shops and global eateries. Find eclectic antique pieces a from Les Couilles du Chien or browse the artwork at Graffik Gallery. For a culture-filled day, catch a film at the Electric Cinema, or it's a five-minute walk to the Museum of Brands, where an archive of items from the last 200 years awaits. Head to Golborne Road for an evening of live music and fine dining at Laylow – be home in ten.



PROPERTY HIGHLIGHTS

- Open-plan kitchen, living and dining room
- Master bedroom suite
- Guest bedroom
- One further bathroom
- Study
- Royal Borough of Kensington & Chelsea



FIRST FLOOR

Approximate Area = 75.1 sq m / 808 sq ft

Surveyed and drawn in accordance with the International Property Measurement Standards (IPMS 2: Residential)
fourwalls-group.com 887225





Please don't hesitate to get in touch if you have any questions or require any further information.

hello@domusstay.com

+44 (0)20 8168 8880

Domus Stay provides the perfect combination of property, place and personal service for the world's most remarkable people. If you have any questions, or if we can help in any way, please contact us on the above number. Be it about a property you have, a property you want, dates to check or any special requirements you may need, we'd love a chat.

