

domus  
stay.

---

# The WIK Duplex

Queens Park W9

1 Bedrooms, 1 Bathrooms  
For 2 guests

---



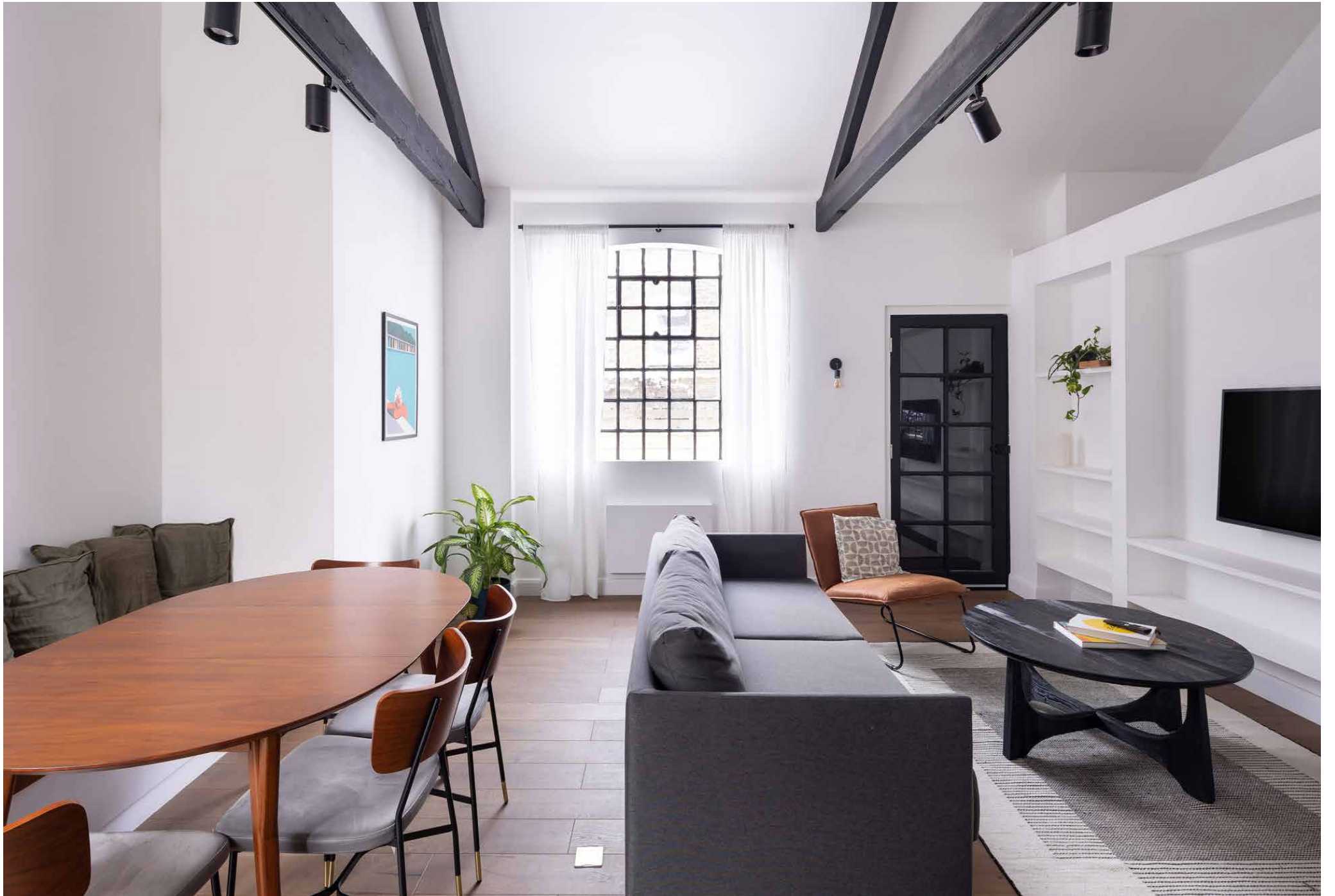


In vibrant Queen's Park, this streamlined duplex apartment is bound by sunlight and monochromatic tones.

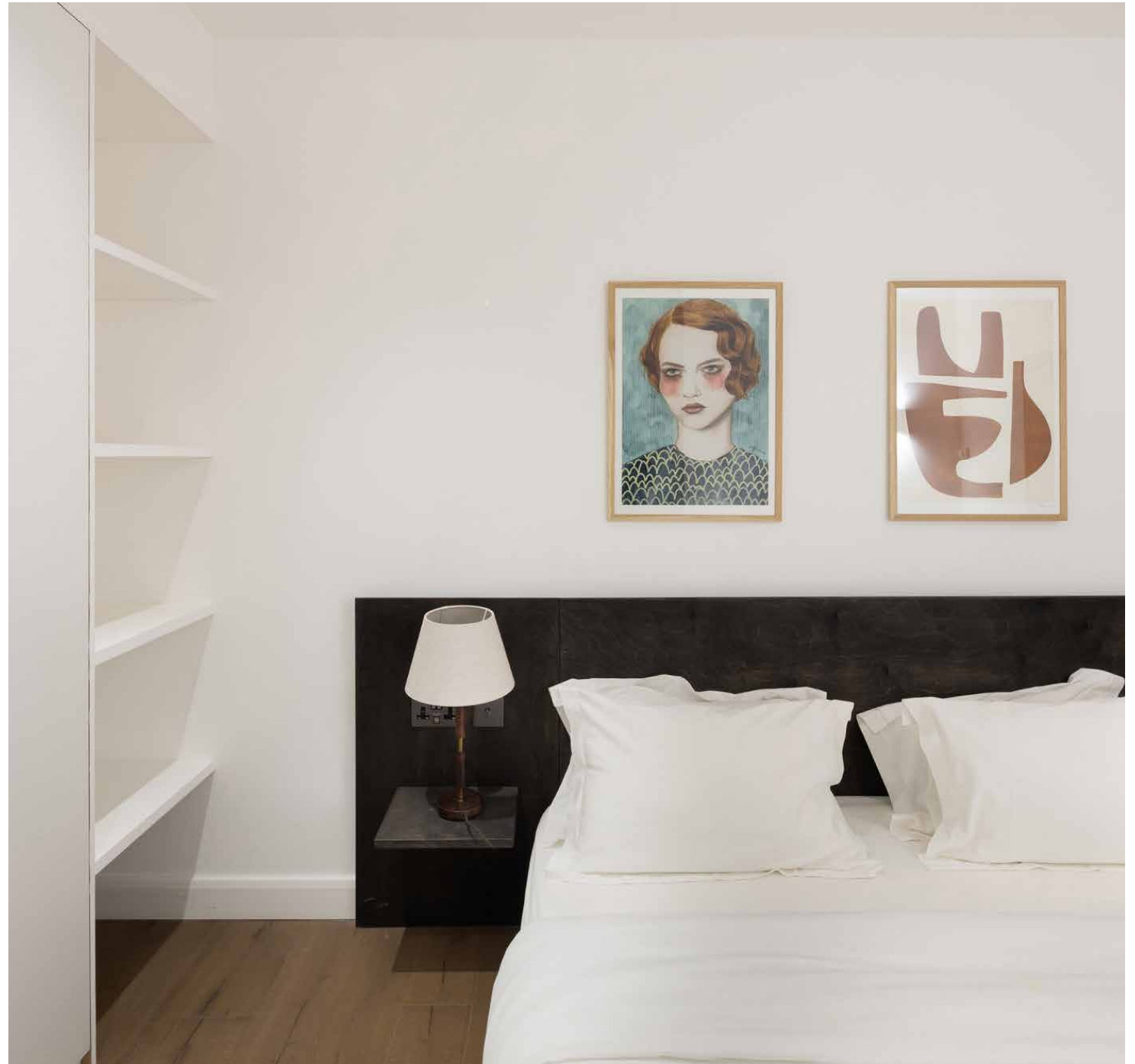
Part of a boutique development reimagined by interior designer Tala Fustok, this one-bedroom duplex apartment's pared-back finish offsets its period bones. Honouring the building's historic usage as a photography studio, the home plays with proportion, natural light and minimalist colour.

There's a voluminous feel to the open-plan kitchen and reception room, evident from the moment you step inside. A vaulted ceiling draws the eye upwards to where exposed ebony joists command attention and well-angled spotlights illuminate the social space. Contrasting wooden and Chroma flooring is used to subtly carve up the space into different zones for eating, lounging and cooking. A matte-black Häcker kitchen pairs form with function: smooth surfaces and a mirrored splashback neatly frame high-spec integrated appliances. From the living area, a Crittall-framed door leads onto a private terrace.





The understated aesthetic ensues in the double bedroom downstairs. There's a tactility to the wooden headboard and floors, contrasting with the whitewashed tones that span the rest of the room. A free-standing tub is poised for long soaks, or the walk-in shower next door is equally as stylish with Solus tiles and a skylight.











## LOCATION

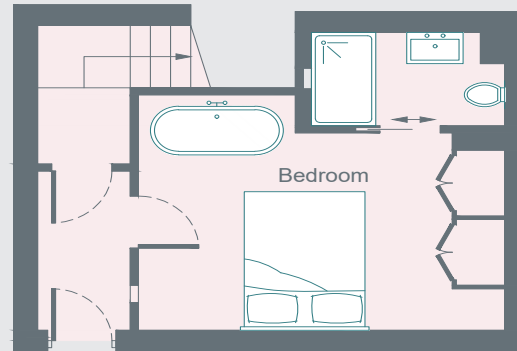
The home is a short stroll from family friendly Queen's Park - where a string of independent businesses and 30-acres of green space await.

Peruse the paperbacks at Queen's Park Books and the well-stocked wine fridges at The Salisbury Wine Store before tucking into an Australian-inspired brunch at Milk Beach or shopping for beautiful blooms at Scarlet & Violet. Limber up for a game of tennis in Queen's Park, or for a more relaxing – and altruistic – activity, venture a little further up Chamberlayne Road to the Lexi, an independent cinema run by volunteers, with all proceeds going to charity.

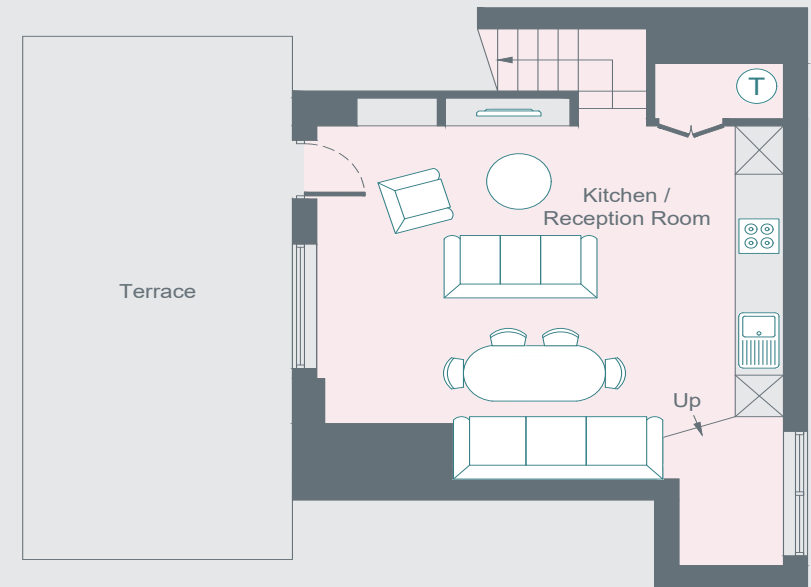


PROPERTY HIGHLIGHTS

- Interior design by Tala Fustok
- Duplex apartment
- Open-plan kitchen and reception room
- Double bedroom suite
- Private terrace
- City of Westminster



Ground Floor



First Floor

Approximate Area = 60.5 sq m / 651 sq ft  
Surveyed and drawn in accordance with the International Property Measurement Standards (IPMS 2: Residential)  
fourwalls-group.com 54961





Please don't hesitate to get in touch if you have any questions or require any further information.

---

[hello@domusstay.com](mailto:hello@domusstay.com)

+44 (0)20 8168 8880

Domus Stay provides the perfect combination of property, place and personal service for the world's most remarkable people. If you have any questions, or if we can help in any way, please contact us on the above number. Be it about a property you have, a property you want, dates to check or any special requirements you may need, we'd love a chat.

