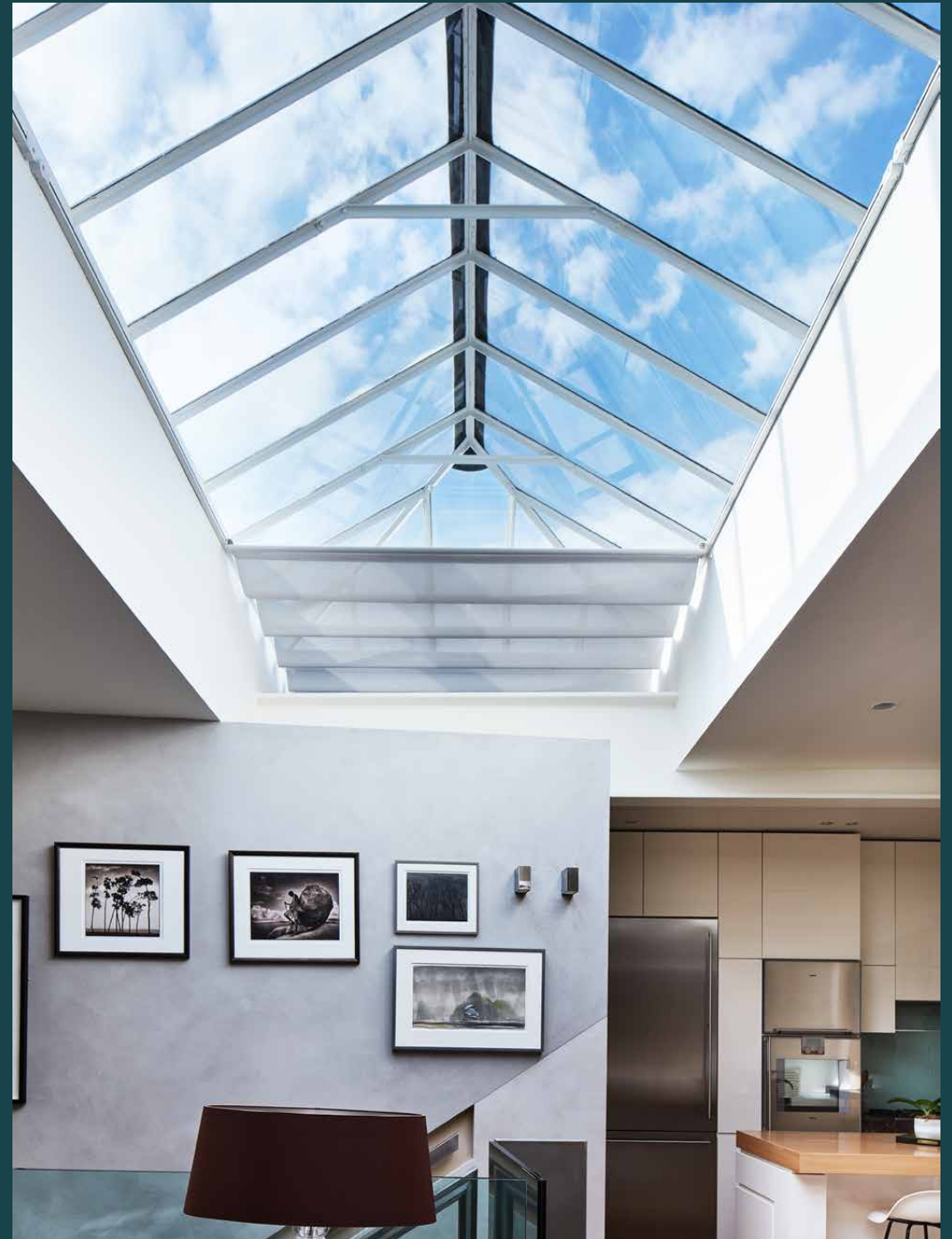


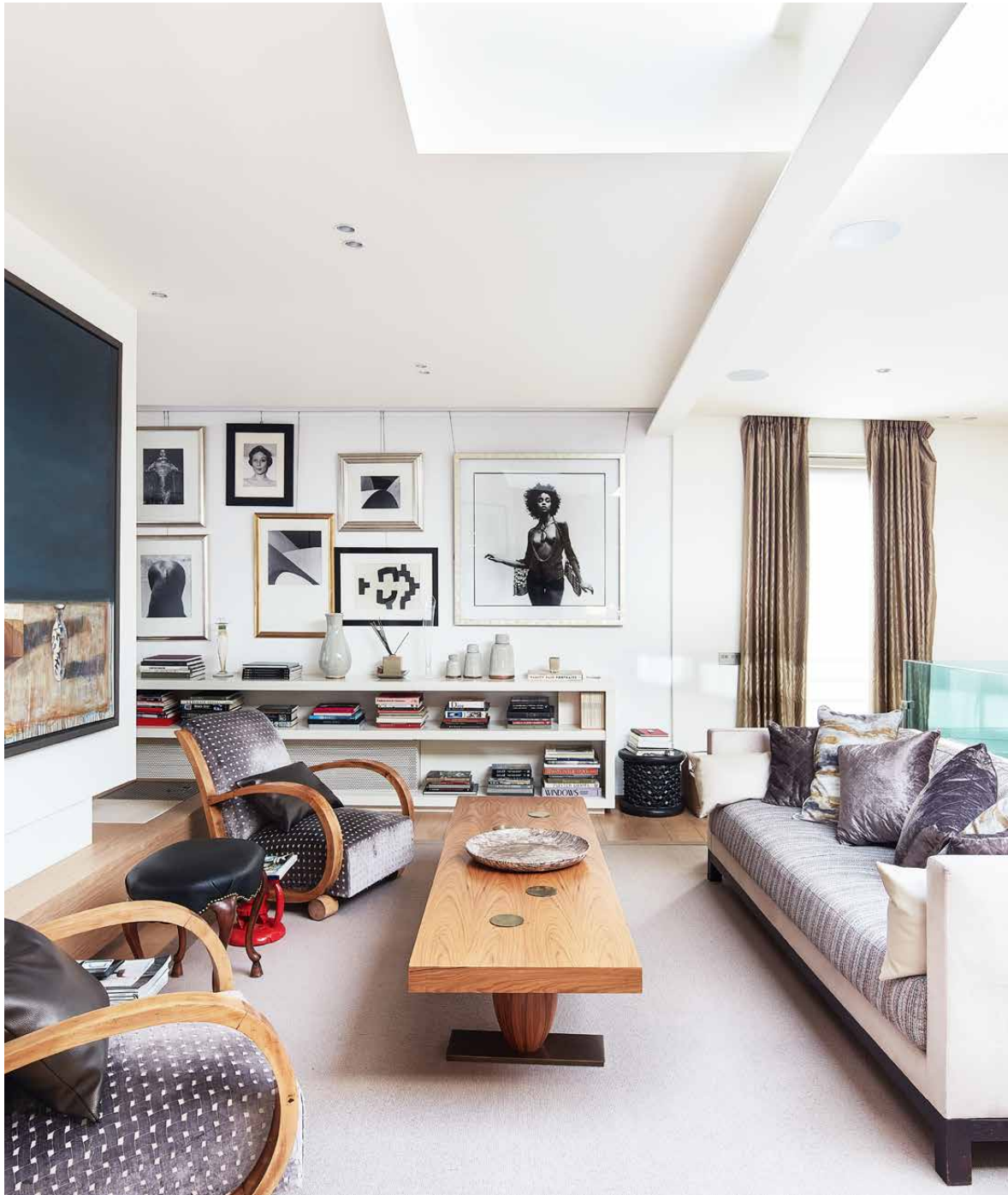
domus
stay.

Napier Place

Kensington W14

3 Bedrooms, 3 Bathrooms
For 6 guests





**Spacious in design, welcoming in feel,
this flawlessly-reimagined mews home is
a gallery of creative finesse.**

The history of mews homes is broad-reaching, from their historic use as equestrian stables to mid-century garages for racing automobiles. Fast-forward to the 21st century, three-bedroom Napier Place puts a creative spin on this mews' storied footprint with discerning artefacts, state-of-the-art appliances and convivial open-plan living spaces.

The social nucleus of the home is spread across the spacious first floor. An entertainer's paradise, there's streamlined flow between the kitchen, living and dining areas. The room is adorned with conversation-starting artwork and inviting spots to convene with loved ones. Cast your eyes upwards to the retractable skylight, affording a bright and voluminous feel. Music lovers, take note: behind the partition wall, a grand piano awaits the touch of a virtuoso. Plus, there's a Sonos music system fitted throughout the home to soundtrack your days and nights.







“

The first-floor reception rooms are envisaged for quality time with friends and family.









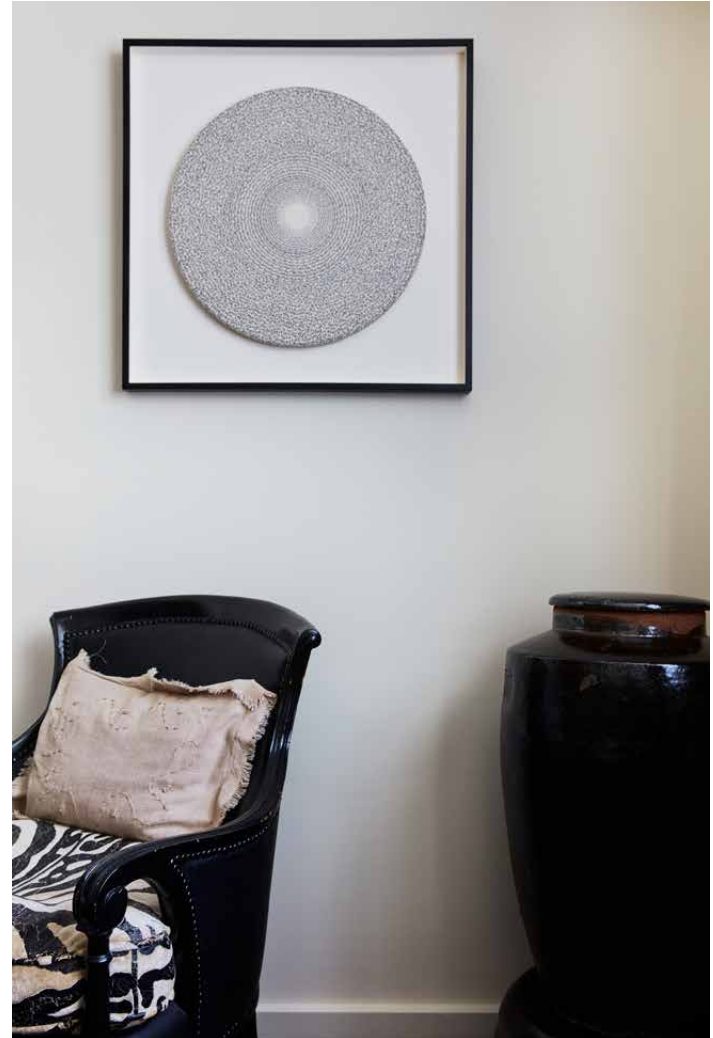


Downstairs, mornings are easy in the master bedroom, with a sunny north-facing aspect. Global antiques coalesce with homely seating – a quiet spot to switch off with a page-turner. Sliding doors open to a dedicated dressing space and serene bathroom. Couples will appreciate the sleek dual vanity. For family and guests, the first and ground-floor bedroom suites balance refined tonal palettes with patterned fabrics and eclectic pieces of art. Plus, a home gym is perfect to get your endorphins running high and a laundry room keeps things organised – both located on the lower level.













Pick between a pressure shower or an inviting soak.





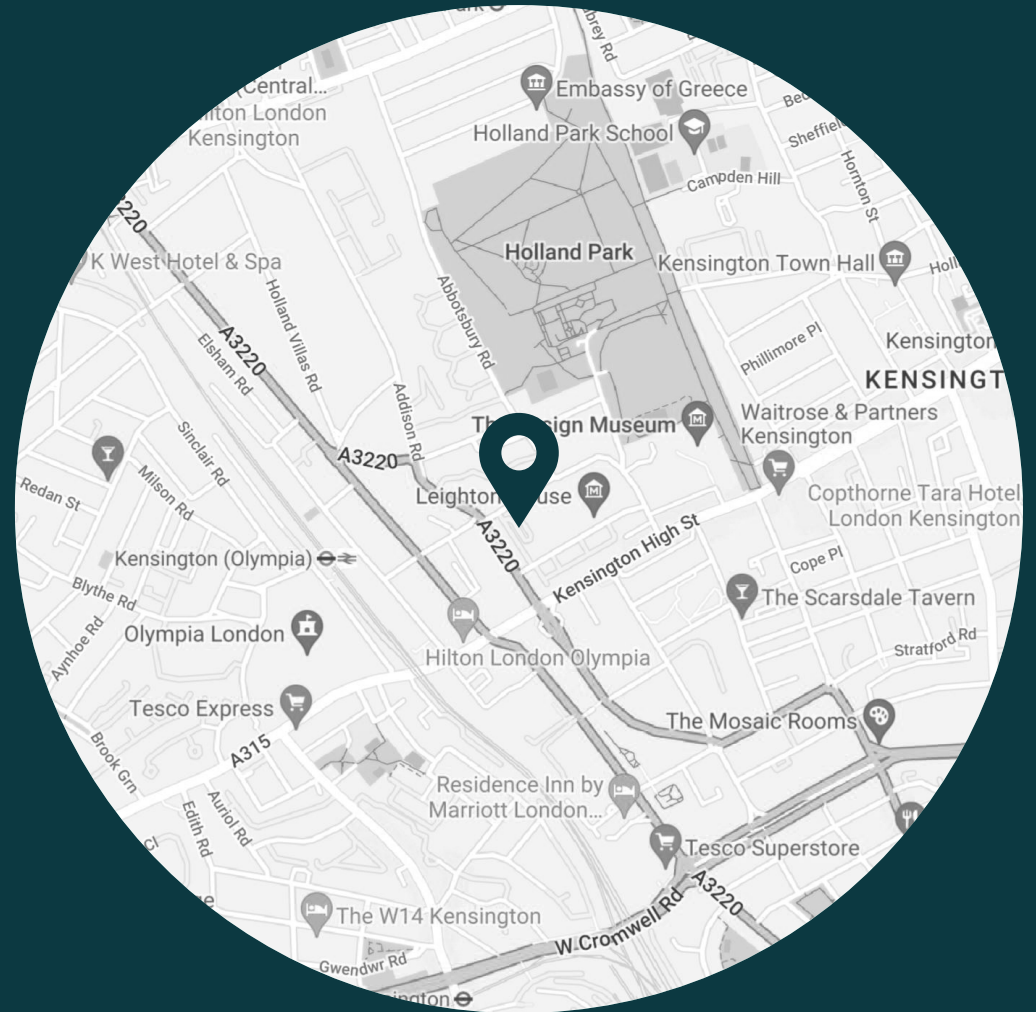




LOCATION

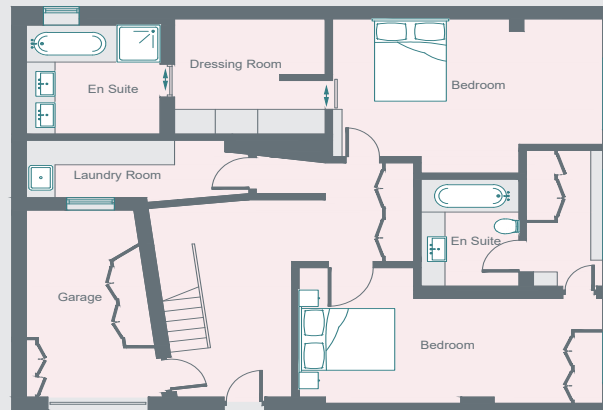
Caught between the storied streets of Kensington and vibrant bustle of Shepherd's Bush, Napier Place enjoys west London's most diverse offerings.

A short walk gets you to the verdant lawns of Holland Park; admire the beautiful Kyoto Gardens or head to the Design Museum for a world-class exhibition. The Village at Westfield Shopping Centre is home to renowned luxury boutiques, High Street Kensington for your essentials or venture further into Notting Hill for its notorious vintage shopping. For a night of fine-dining, Kitchen W8 is just ten minutes' away for a Michelin-starred, modern European menu.

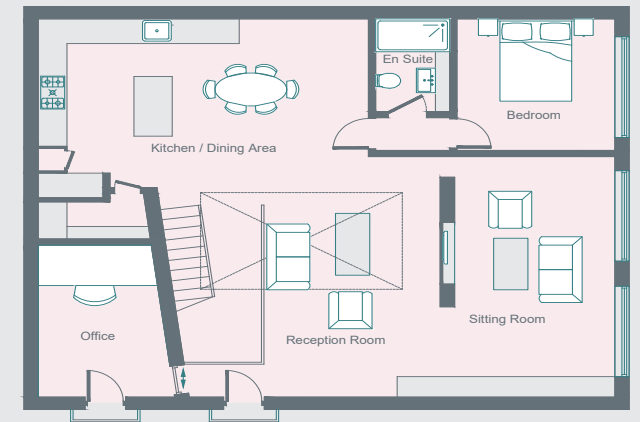


PROPERTY HIGHLIGHTS

- Open-plan kitchen and reception room
- Master bedroom suite with dressing room
- Two guest bedroom suites
- Study
- Gym
- Laundry room
- Front patio
- Royal Borough of Kensington & Chelsea



Ground Floor



First Floor

Approximate Area = 222.3 sq m / 2393 sq ft
Surveyed and drawn in accordance with the International Property Measurement Standards (IPMS 2: Residential)
fourwalls-group.com 274179



**domus
stay.**

Please don't hesitate to get in touch if you have any questions or require any further information.

hello@domusstay.com

+44 (0)20 8168 8880

Domus Stay provides the perfect combination of property, place and personal service for the world's most remarkable people. If you have any questions, or if we can help in any way, please contact us on the above number. Be it about a property you have, a property you want, dates to check or any special requirements you may need, we'd love a chat.

