

domus  
stay.

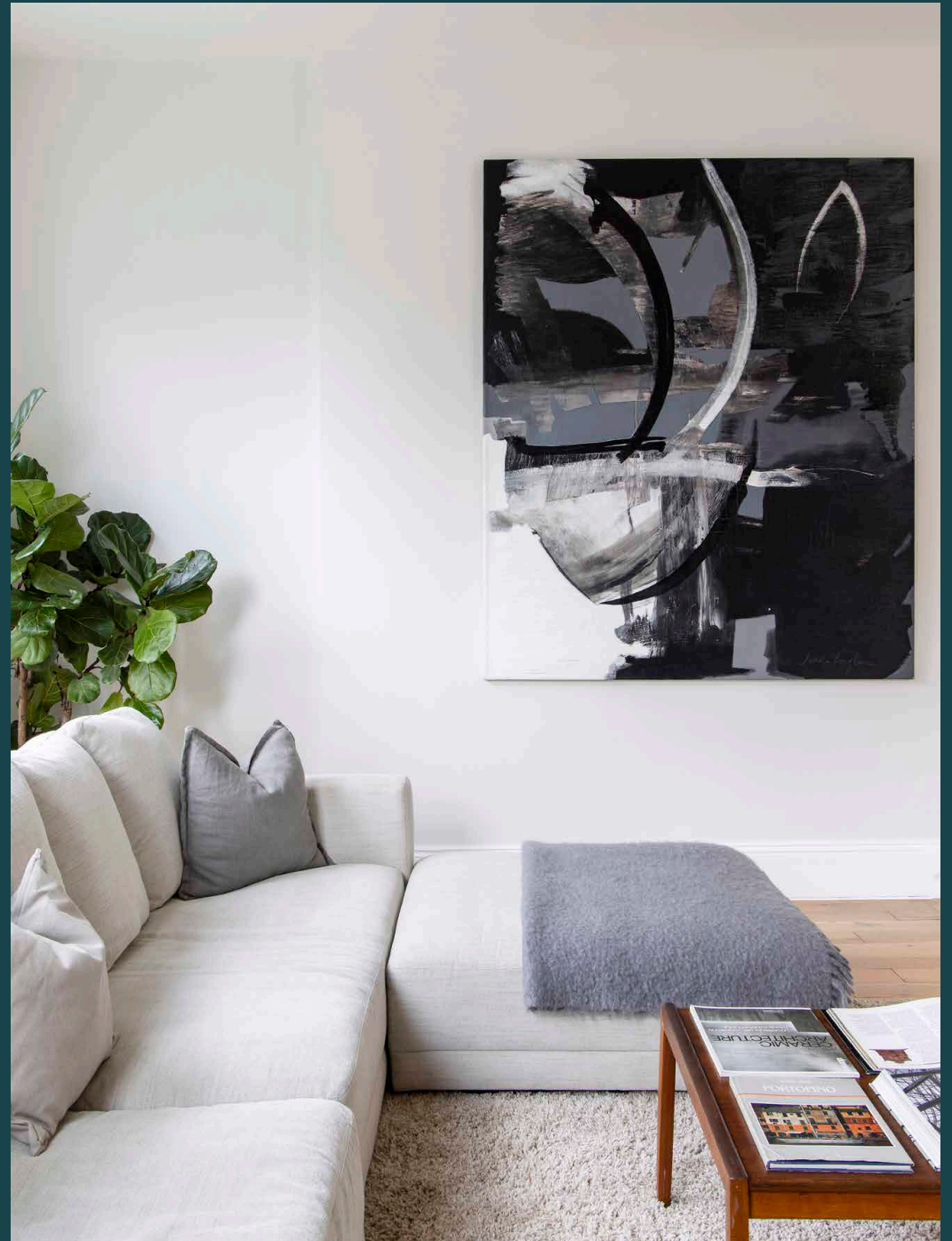
---

# Westbourne Grove

Bayswater W2

2 Bedrooms, 2 Bathrooms  
For 4 guests

---





Set on one of Notting Hill's most coveted streets, this two-bedroom apartment is a serene sanctum with awe-inspiring proportions.

Inside this two-bedroom apartment, considered contemporary design makes the most of its spacious end-of-terrace plot. The voluminous scale of the open-plan living space impresses at once, accentuated by sunlight that pours through a series of sash windows. A minimalist aesthetic is realised with blonde wood floors, whitewashed walls and pale tones – lending attention to contemporary artwork and an opulent chandelier that hangs over the dining table. Form meets function in the whitewashed kitchen area, complete with glossy cabinets and integrated appliances. The room's most captivating feature is the floor-to-ceiling bookcase; its plentiful array of texts is affectionately arranged in colour-order. An integrated desk is set for home working, with an inviting L-shaped sofa positioned adjacent for when evening draws in.









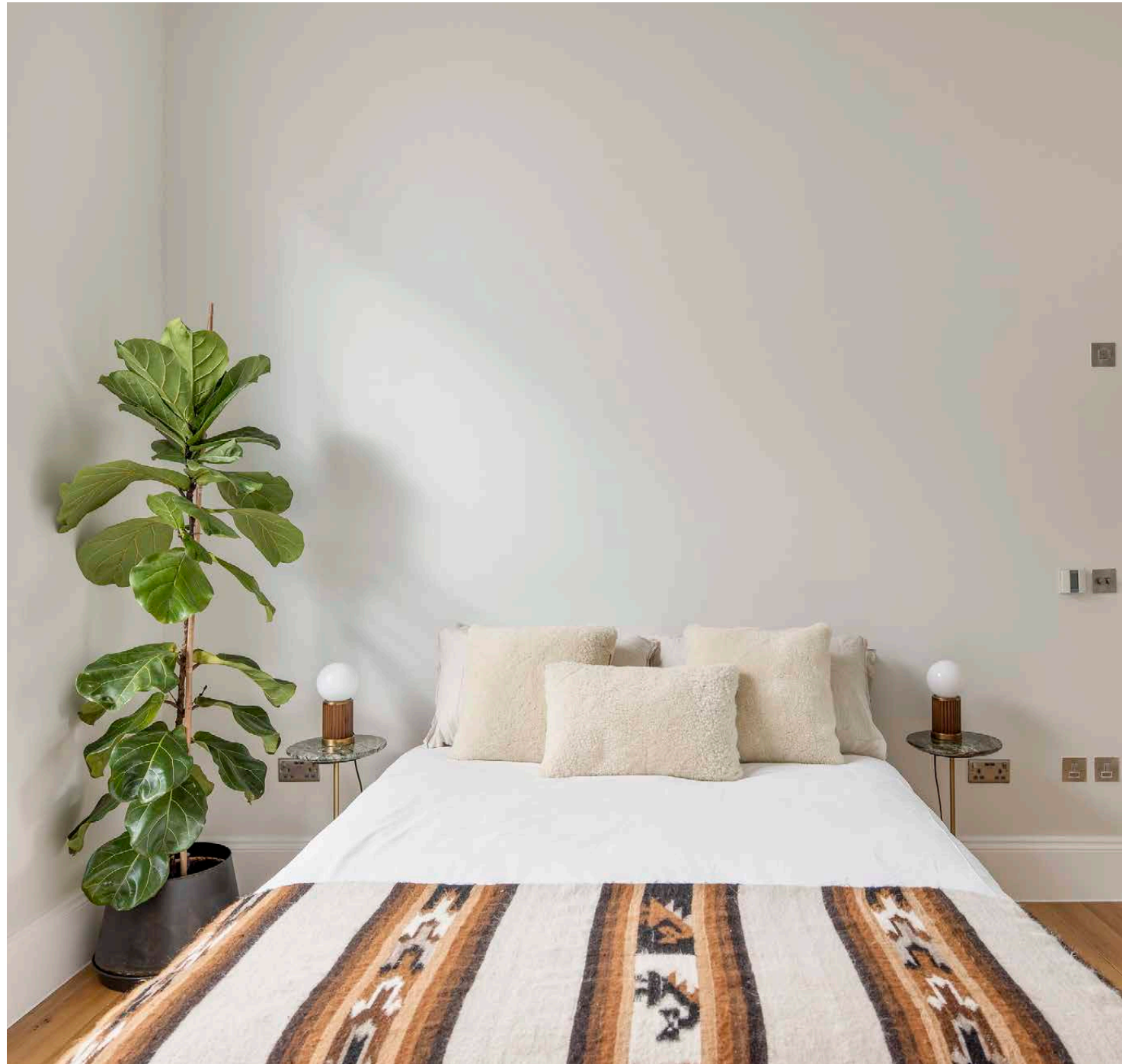
“

With effortless flow between cooking, dining and sitting spots.

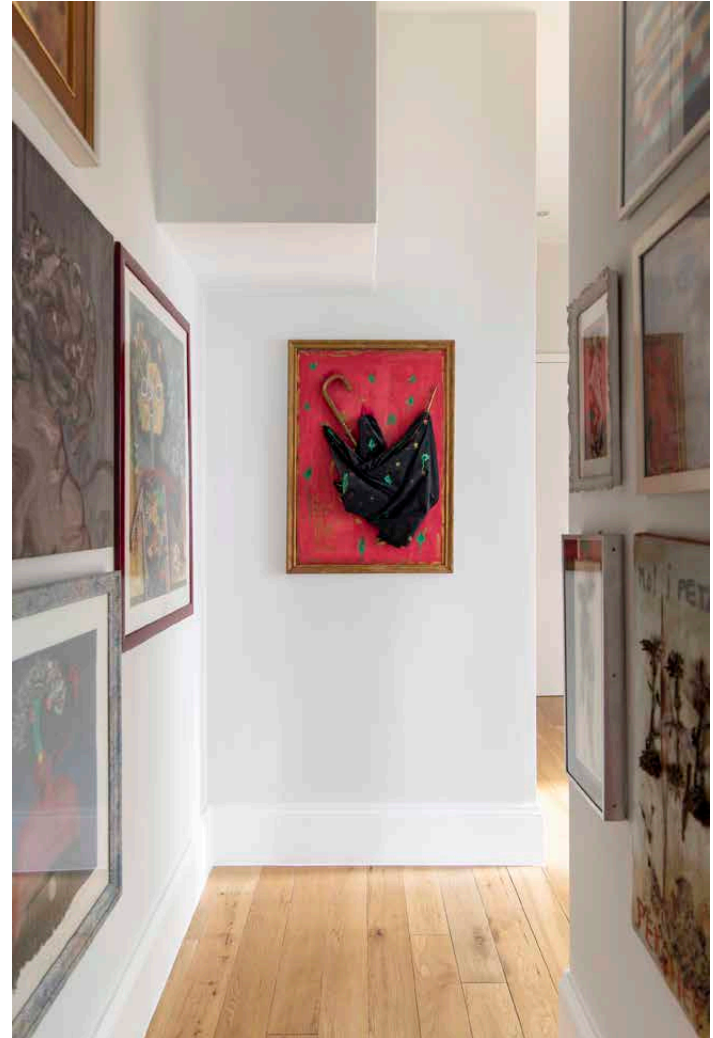




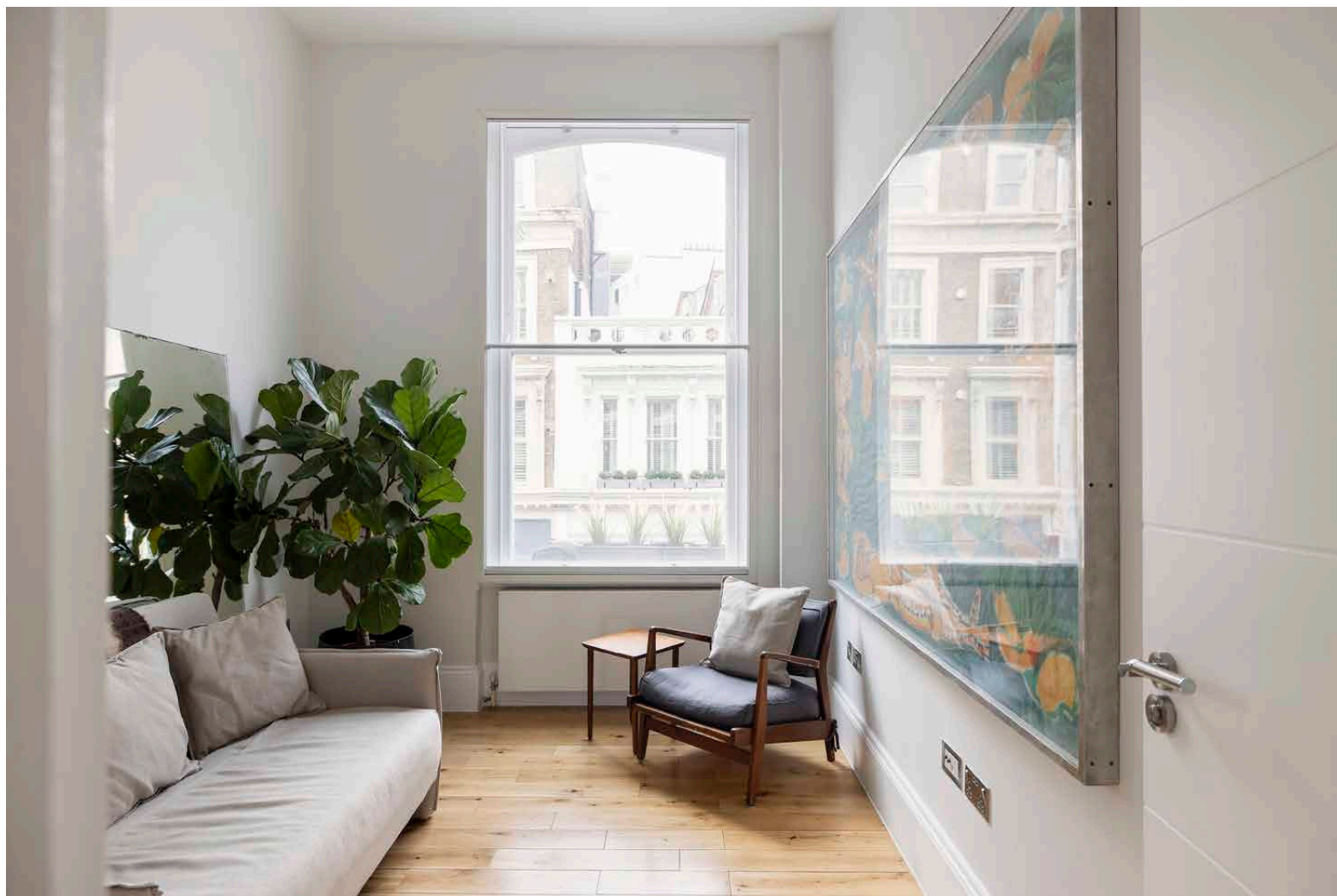
The principal bedroom suite is all swathes of light and hushed tones, with full-height mirrored wardrobes amplifying the sense of space. After long days spent in the city, return to a long soak in the en suite bathroom. The guest bedroom vaunts a calming interior palette, served by an additional shower room.















HEREFORD ROAD W2

FRANCO MANCA  
SOFT DOUGH PIZZA



2

THESAURUS



DR

HERFORD



## LOCATION

Embedded in vibrant fabric of Westbourne Grove, this apartment is a stone's throw away from some of the best eateries and shops in the area.

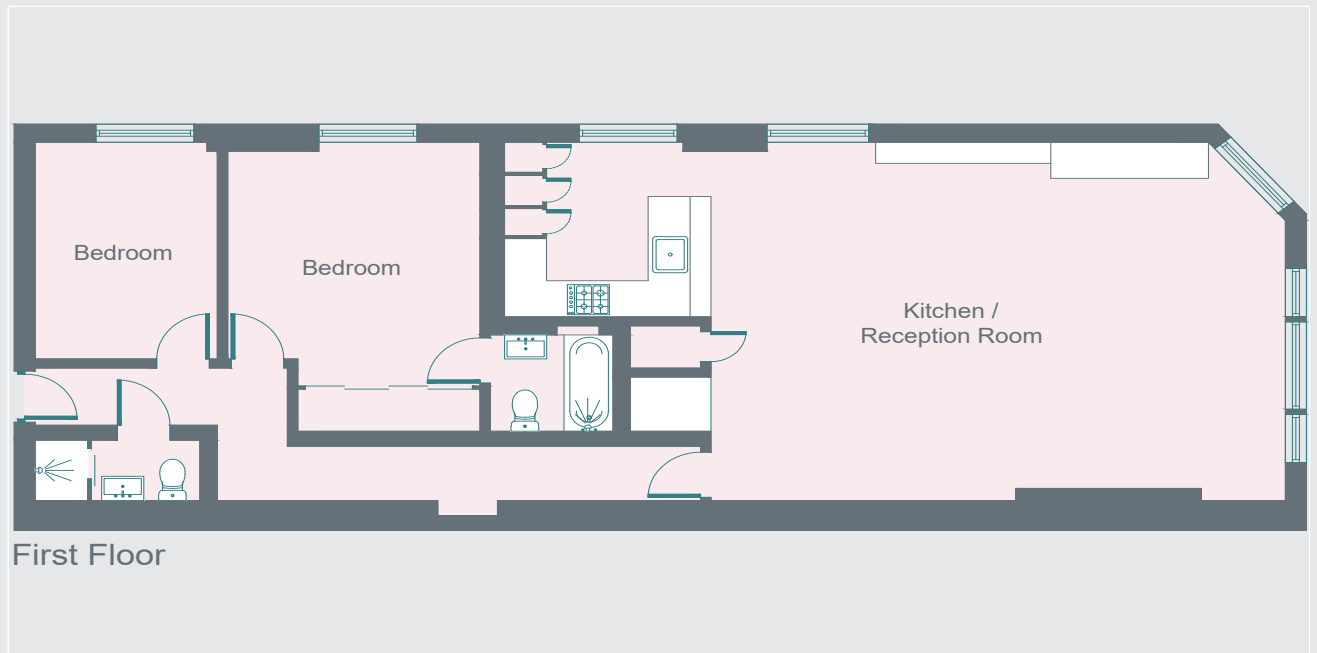
Enjoy the innovation of a plant-based brunch at Farmacy, before hitting a spin-class at Psycle. Browse an array of boutiques, from Parisian-designed Sézane to Caudalie for indulgent treatments. Spend a night at coveted restaurant, Gold. With Notting Hill Gate just a 10-minute walk away, there is easy access into central London and beyond.





#### PROPERTY HIGHLIGHTS

- Open-plan kitchen and reception room
- Principal bedroom suite
- Guest bedroom
- Guest bathroom
- City of Westminster





Please don't hesitate to get in touch if you have any questions or require any further information.

---

[hello@domusstay.com](mailto:hello@domusstay.com)

+44 (0)20 8168 8880

Domus Stay provides the perfect combination of property, place and personal service for the world's most remarkable people. If you have any questions, or if we can help in any way, please contact us on the above number. Be it about a property you have, a property you want, dates to check or any special requirements you may need, we'd love a chat.

