

domus
stay.

Chesterfield House

Mayfair W1

2 Bedrooms, 2 Bathrooms
For 4 guests





A two-bedroom penthouse in sought-after Mayfair with a designer silhouette and views across the City.

You might be in central London but there's a sense of calm in this à la mode retreat. Haute aesthetics that echo the elegance of its Mayfair address thanks to the delicate touch of renowned designer Maurizio Pellizzoni. An oak-floored blueprint that matches beautiful form with streamlined function. Open-plan living that can be cleverly closed off – seamless flow and privacy when you need it. Plus, postcard-worthy vistas from the terrace.

As you enter, a sliding pocket door separates the skylit hall from the spacious reception and dining room ahead. It's flanked by a custom-made media wall carved from American black walnut on one side and a bevelled-edge mirror wall on the other – contrasting textures that catch the natural light. It's an atmospheric space to settle on Minotti furniture and flick through channels on the built-in TV or share small plates around the dining table. Throw open Crittall French doors to savour uninterrupted views of the Shard and Big Ben with a tippie – switch on the accent lighting to up the ambience.

Behind another pocket door, a sleek kitchen with bespoke cabinetry, integrated Gaggenau appliances and a Quooker instant boiling water tap – all the requirements to make mealtimes effortless. The adjacent laundry room takes care of daily rituals.



Maurizio Pellizzoni is the mastermind behind this sophisticated central London penthouse. Meticulous attention to detail and luxurious style. Plus Minotti London furniture.

“

No matter where you are, colourful artwork create an inspiring backdrop for modern living.









At the end of the hall, the master suite is refined, with tailor-made fitted wardrobes, a work from home space and east-facing windows that let you wake up with the sun. The white Thassos stone en suite is fitted with West One Bathrooms ware, a Villeroy & Boch Oberon bath and a Hansgrohe raindance shower. The second marble bedroom is equally immaculate and is served by a similar family bathroom.













LOCATION

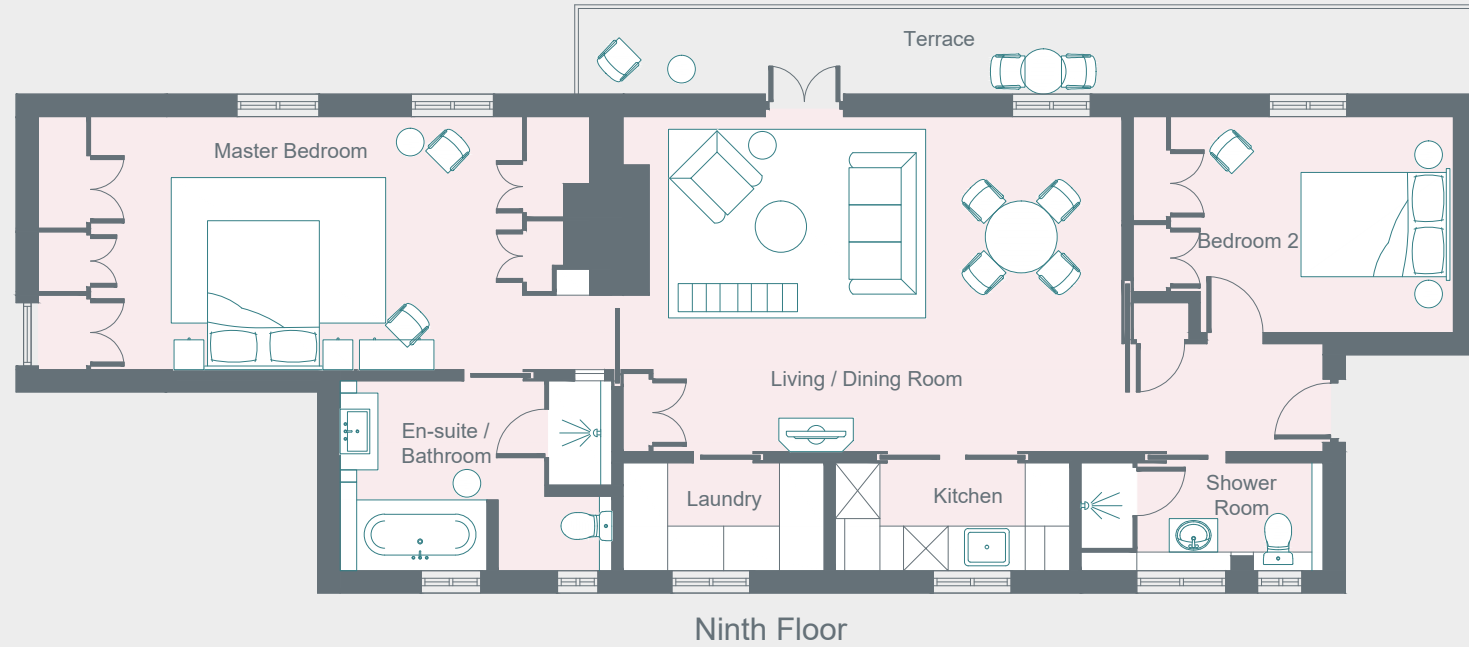
In between Hyde Park and Green Park, this two-bed penthouse benefits from the best of both worlds.

With one of central London's largest green spaces close by, it's easy to press pause on the city thrum. Or explore London's most elegant neighbourhoods – the high-end fashion boutiques and art galleries that are dotted around Mayfair are some of the city's most sophisticated. Don't miss famous Savile Row if you're looking to get suited and booted. Mayfair is bounded by Oxford Street to the north, Piccadilly to the south, Regent Street to the east and Park Lane to the west meaning there's plenty to do and see.



PROPERTY HIGHLIGHTS

- Open-plan reception room
- Master bedroom suite
- Guest bedroom
- Shower room
- Unique design features
- Terrace
- City of Westminster



domus stay.

Please don't hesitate to get in touch if you have any questions or require any further information.

hello@domusstay.com

+44 (0)20 8168 8880

Domus Stay provides the perfect combination of property, place and personal service for the world's most remarkable people. If you have any questions, or if we can help in any way, please contact us on the above number. Be it about a property you have, a property you want, dates to check or any special requirements you may need, we'd love a chat.

