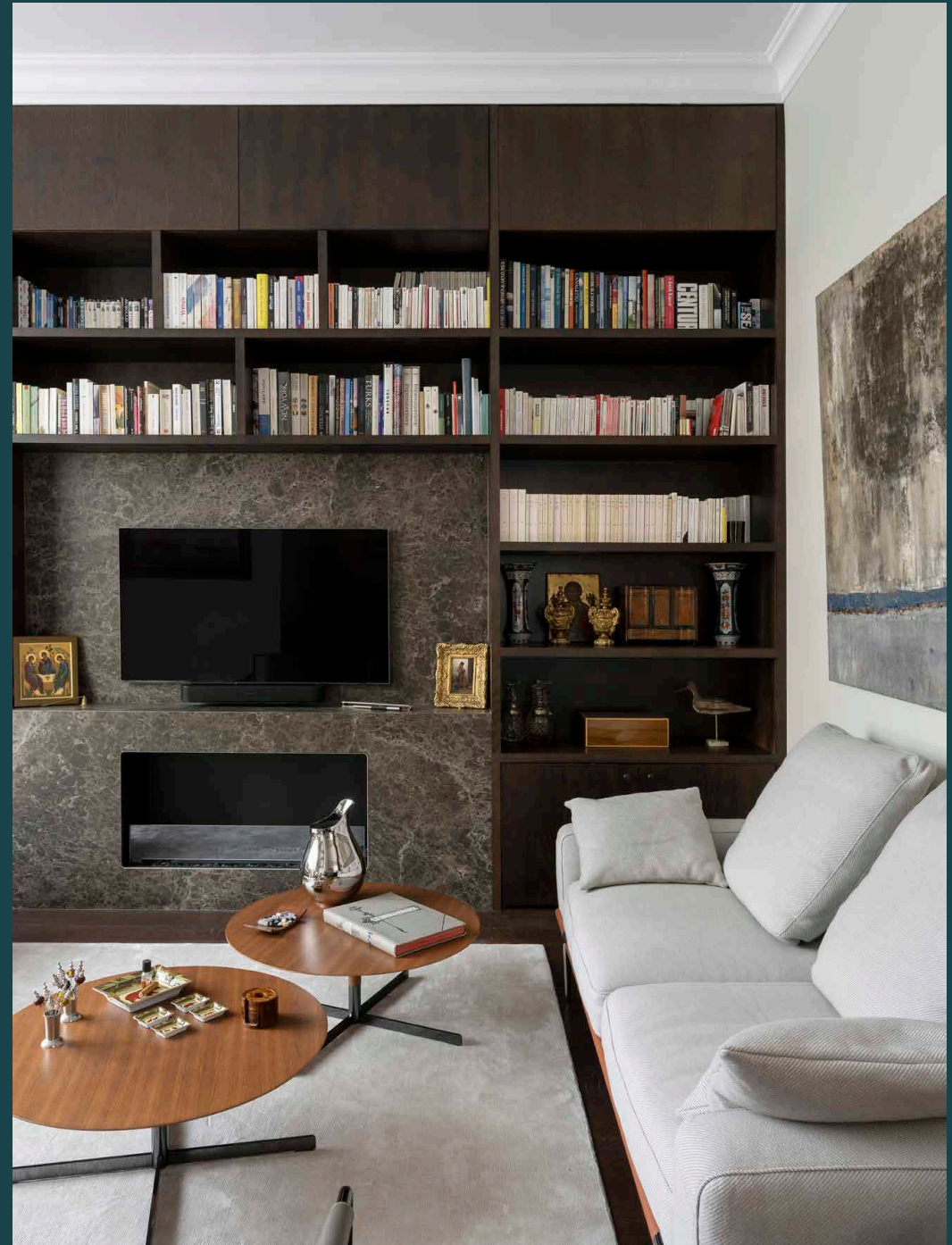

Draycott Place

Chelsea SW3

2 Bedrooms, 2 Bathrooms
For 4 guests





On a handsome street in one of London's most sought-after postcodes, urbane interiors play out across a striking two-bedroom apartment.

Pediment-topped windows, white stucco accents and a turret with a green, patinated roof characterise this quintessential redbrick terrace in Chelsea. Set on the first floor, eye-catching interventions serve to highlight the timeless elegance of a design-led home.

An arched doorway, a shape repeated throughout, leads into the open-plan kitchen and reception room. This convivial space combines pristine finishes and considered furnishings to produce a refined feel. A large, southwest-facing bay window is generous with natural light, illuminating period proportions, soaring bespoke joinery and an ultramodern fireplace. A comfortable seating area is optimised for entertaining with bouclé armchairs. During quieter moments, grab a book from the home library and relax into a handmade leather seat.

Hardwood flooring flows into an eat-in kitchen with dark, minimalistic cabinetry and stone worktops. Integrated appliances and an undermount sink make for clean lines and minimal fuss.



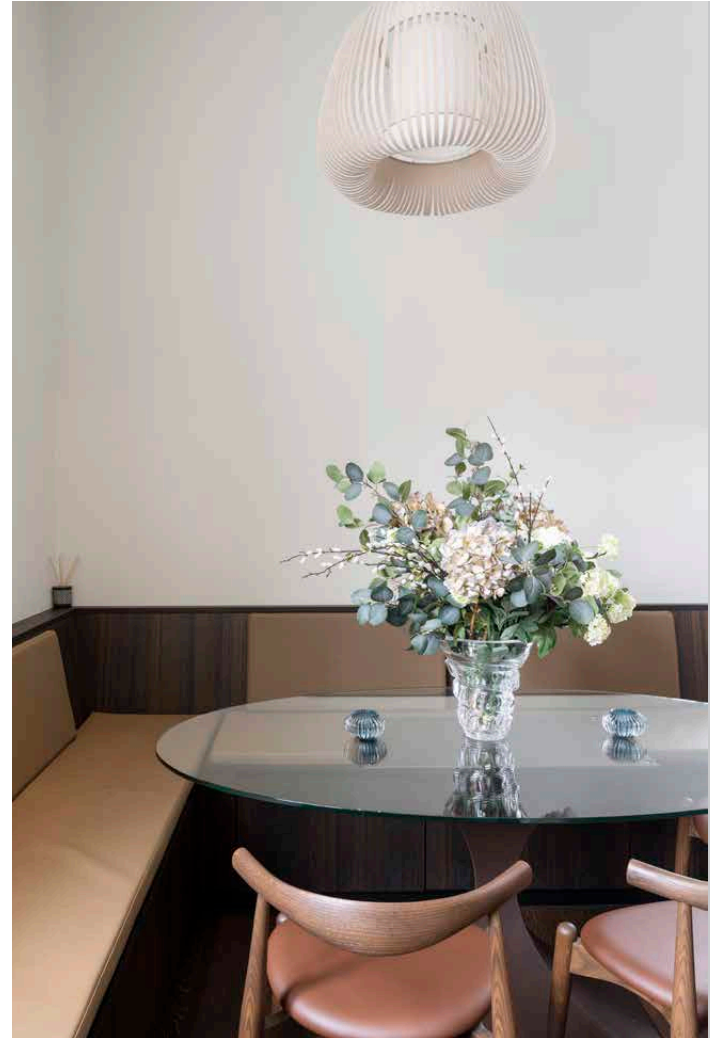
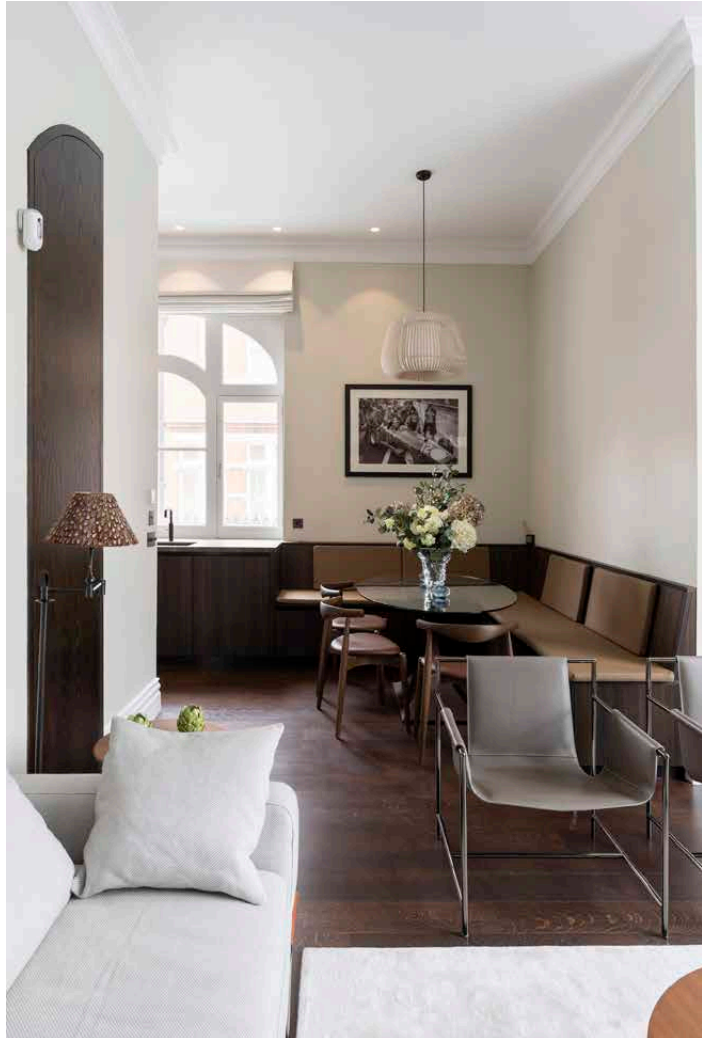
Characterised by fine finishes and Mid-Century furniture, the open-plan living area is satisfyingly symmetrical with bespoke joinery and thoughtful spatial considerations.

“

Prepare a meal on the sleek glass hob then dine on banquette seating in the snug.





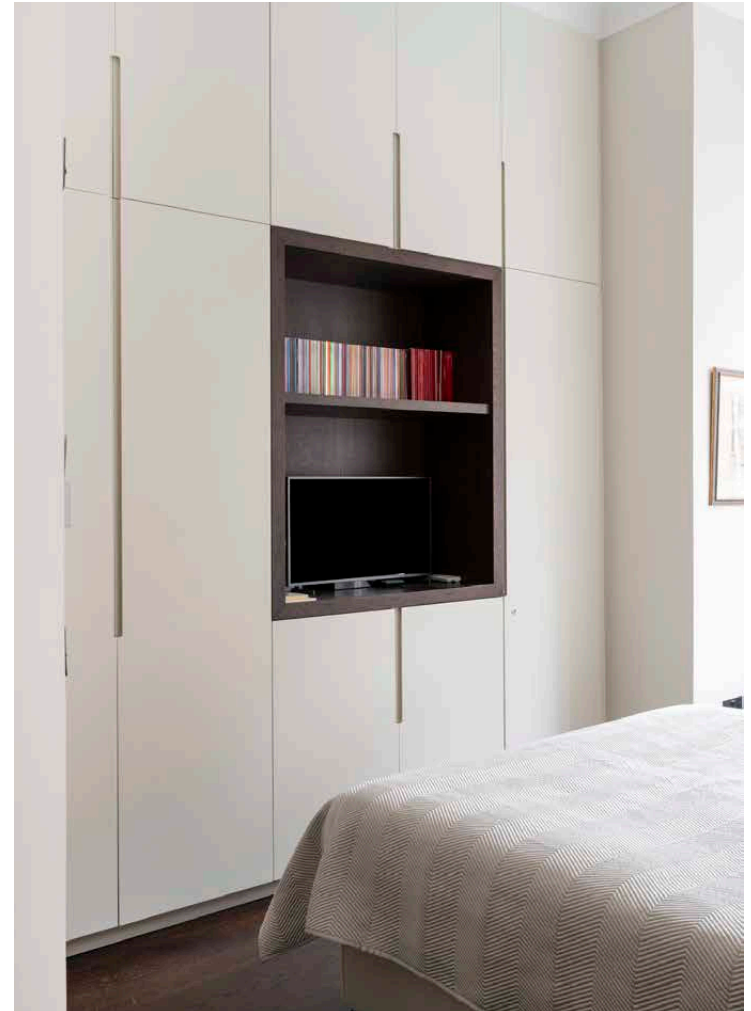


A sense of tranquility has been created within the principal bedroom suite. Neutral tones adorn fitted wardrobes and a bright study area, framed by an expansive window. A marble-clad en suite bathroom features textural wall tiles, modern fittings and a bathtub with an integrated shower.

The guest bedroom enjoys a calming palette. A generous bay makes for a cosy corner while an oval window adds a sense of distinction. One further bathroom benefits from brushed bronze accents, a sculptural countertop basin and a walk-in rainfall shower.







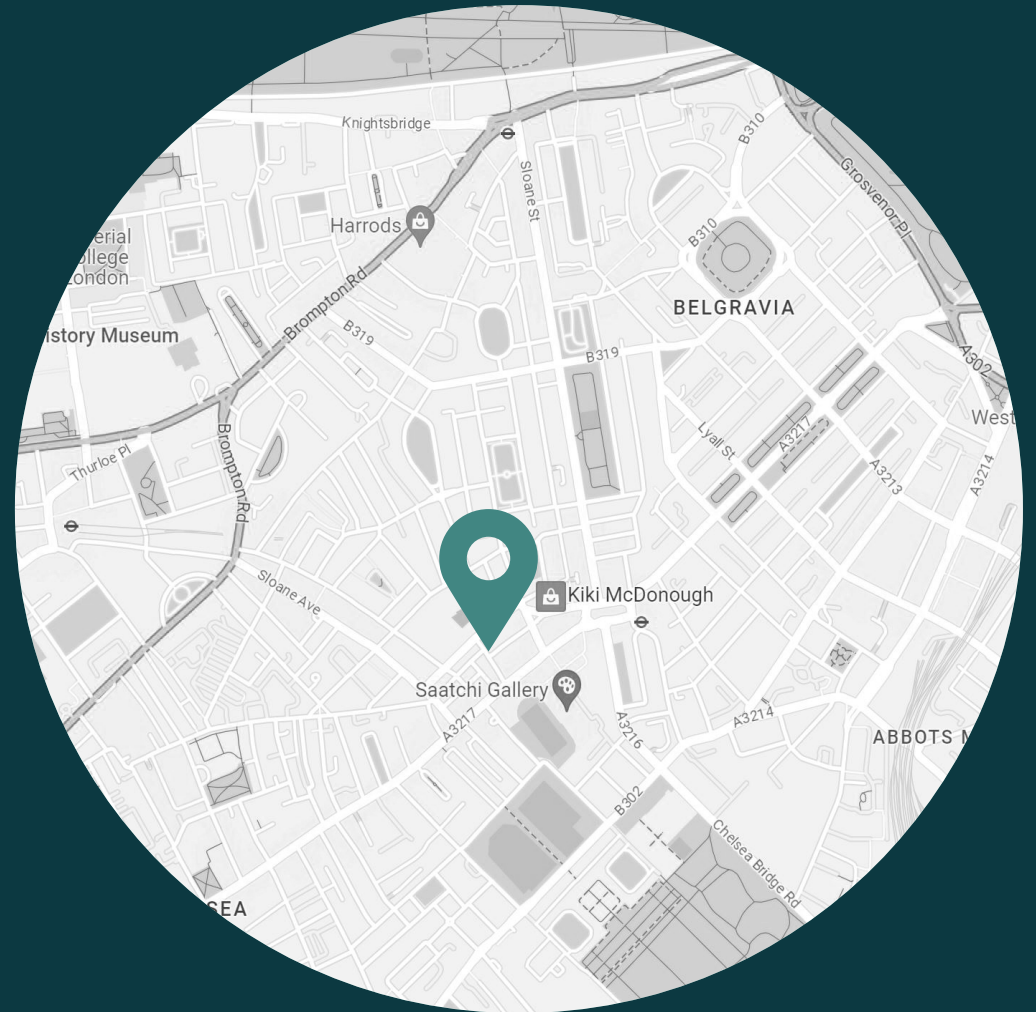




LOCATION

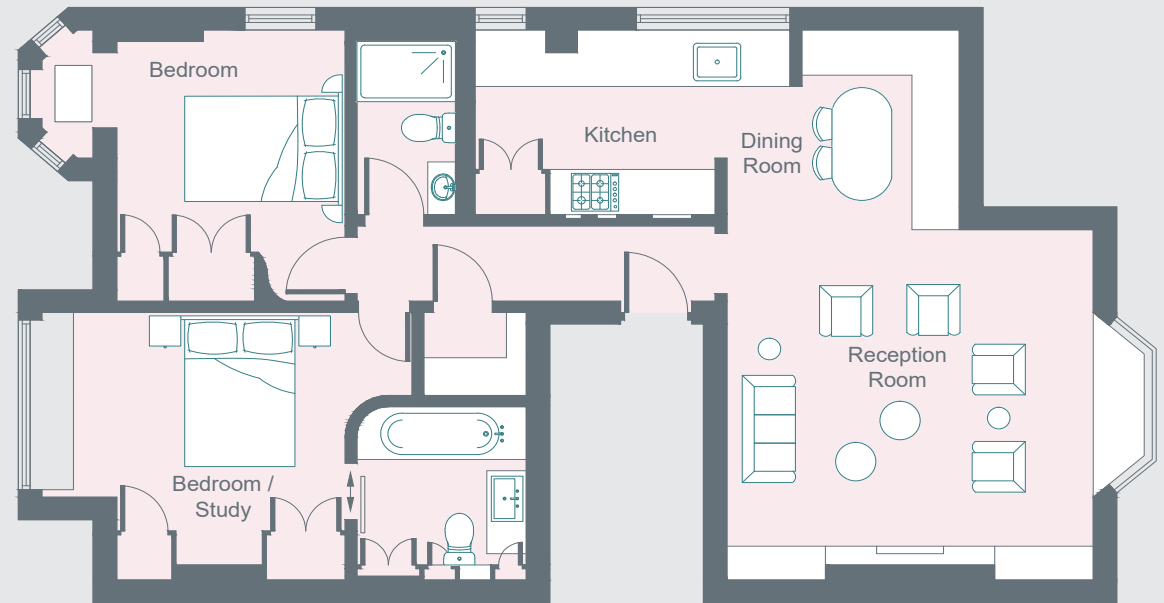
Draycott Place is a regal street in Chelsea moments from the area's bustling hotspots.

Within one minute's walk, you'll find Michelin-starred restaurant The Five Fields. A brief stroll will take you past two more. Head to Sloane Square and dine at famed French bistro The Colbert. Alternatively, make a bid for the boutiques of The King's Road. Duke of York Square and the Saatchi Gallery are also both just two minutes' walk from your front door.



PROPERTY HIGHLIGHTS

- Open-plan kitchen and reception room
- Principal bedroom suite with study area
- Guest bedroom suite with study area
- One further bathroom
- Royal Borough of Kensington & Chelsea



First Floor



Please don't hesitate to get in touch if you have any questions or require any further information.

hello@domusstay.com

+44 (0)20 8168 8880

Domus Stay provides the perfect combination of property, place and personal service for the world's most remarkable people. If you have any questions, or if we can help in any way, please contact us on the above number. Be it about a property you have, a property you want, dates to check or any special requirements you may need, we'd love a chat.

