

domus
stay.

Westbourne Park Villas

Notting Hill W2

3 Bedrooms, 2 Bathrooms
For 6 guests





A three-bedroom home bound by minimalist design and punchy artwork, with a roof terrace overlooking one of Notting Hill's coveted residential pockets.

Set in one of Notting Hill's serene enclaves, there's an easygoing feel to this reimagined period home. White wood floorboards draw you into the open-plan reception room, where a trio of full-height sash windows infuse the social space with natural light. An array of living and dining seating are poised for entertaining, all maintaining the property's signature minimalist tones. Whitewashed walls set the stage for a host of playful contemporary artwork. Through an archway, there's a quiet study complete with an indoor exercise bike. The calming atmosphere is effortlessly continued into the kitchen, where ceiling beams afford a light rustic touch to the streamlined surfaces and modern appliances.



The whitewashed framework is enlivened with vibrant paintings and dynamic sculptures.

“

An array of living and dining seating are poised for entertaining, all maintaining the property's signature minimalist tones.







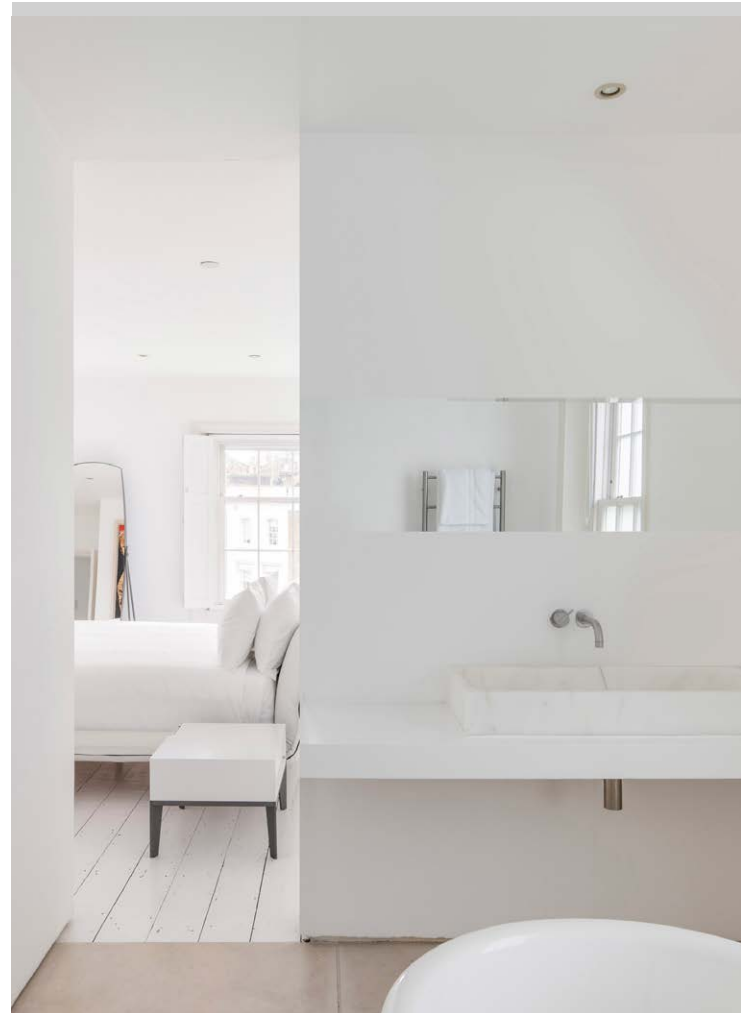


A hallway glows blush pink, courtesy of a stylised neon light. It leads upstairs to the three bedrooms, each with a tranquil aesthetic and atmosphere.

The principal bedroom is finished with a row of integrated wardrobes and bold wall prints. A free-standing tub is inviting at the centre of the en suite bathroom. Two guest bedrooms are complete with plenty of storage – the third-floor room leading directly onto the roof terrace. Capitalise on London's sunny days with a state-of-the-art barbecue perfect for alfresco cooking.













“

A decked roof terrace gazes across this quiet enclave of Notting Hill.





WESTBOURNE
PARK
VILLAS W2
CITY OF WESTMINSTER

THE WESTBOURNE

KIDS
DRINK
FREE!
11pm-10pm

Top Maintenance

0208
935 5614

2

LOCATION

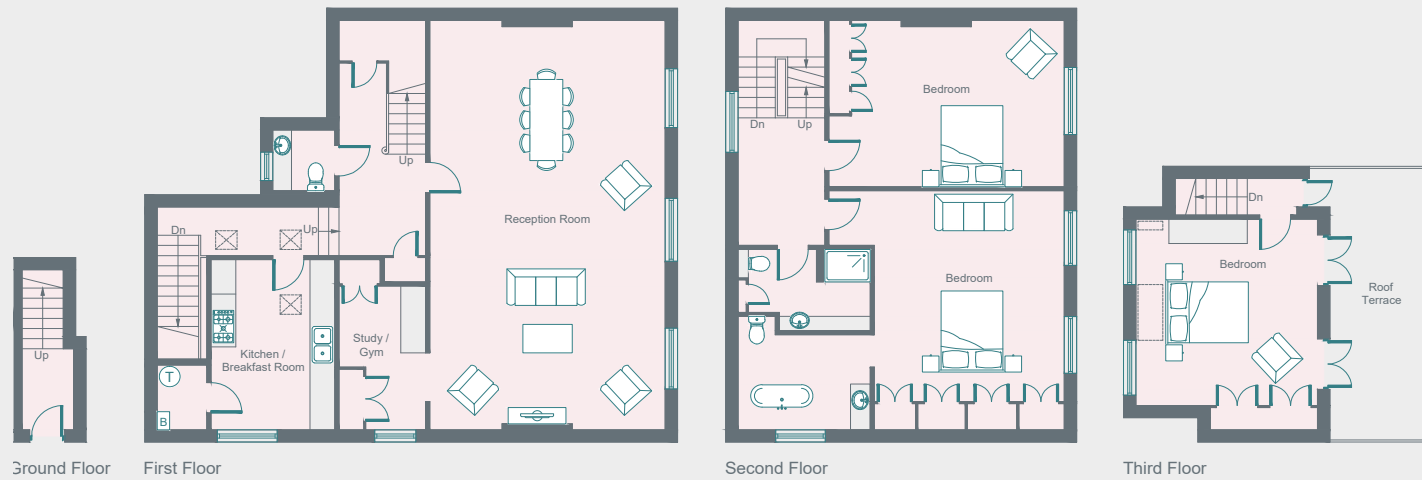
Westbourne Park Villas is a peaceful stepping stone to Notting Hill's biodynamic eateries, boutique shops and artisan coffee shops.

Venture to Westbourne Grove for brunch at Jusu or Granger & Co., before refreshing your wardrobe at Sézane or Reformation. Enjoy an uplifting workout at Bodyism or SoulCycle followed by a film at Electric Cinema. Conclude an evening with a drink at legendary pubs The Cow or The Westbourne, set just below your home.



PROPERTY HIGHLIGHTS

- Open-plan reception room
- Contemporary kitchen
- Principal bedroom suite
- Two further bedrooms
- Family bathroom
- One WC
- Roof terrace
- Study
- Royal Borough of Kensington & Chelsea



domus stay.

Please don't hesitate to get in touch if you have any questions or require any further information.

hello@domusstay.com

+44 (0)20 8168 8880

Domus Stay provides the perfect combination of property, place and personal service for the world's most remarkable people. If you have any questions, or if we can help in any way, please contact us on the above number. Be it about a property you have, a property you want, dates to check or any special requirements you may need, we'd love a chat.

