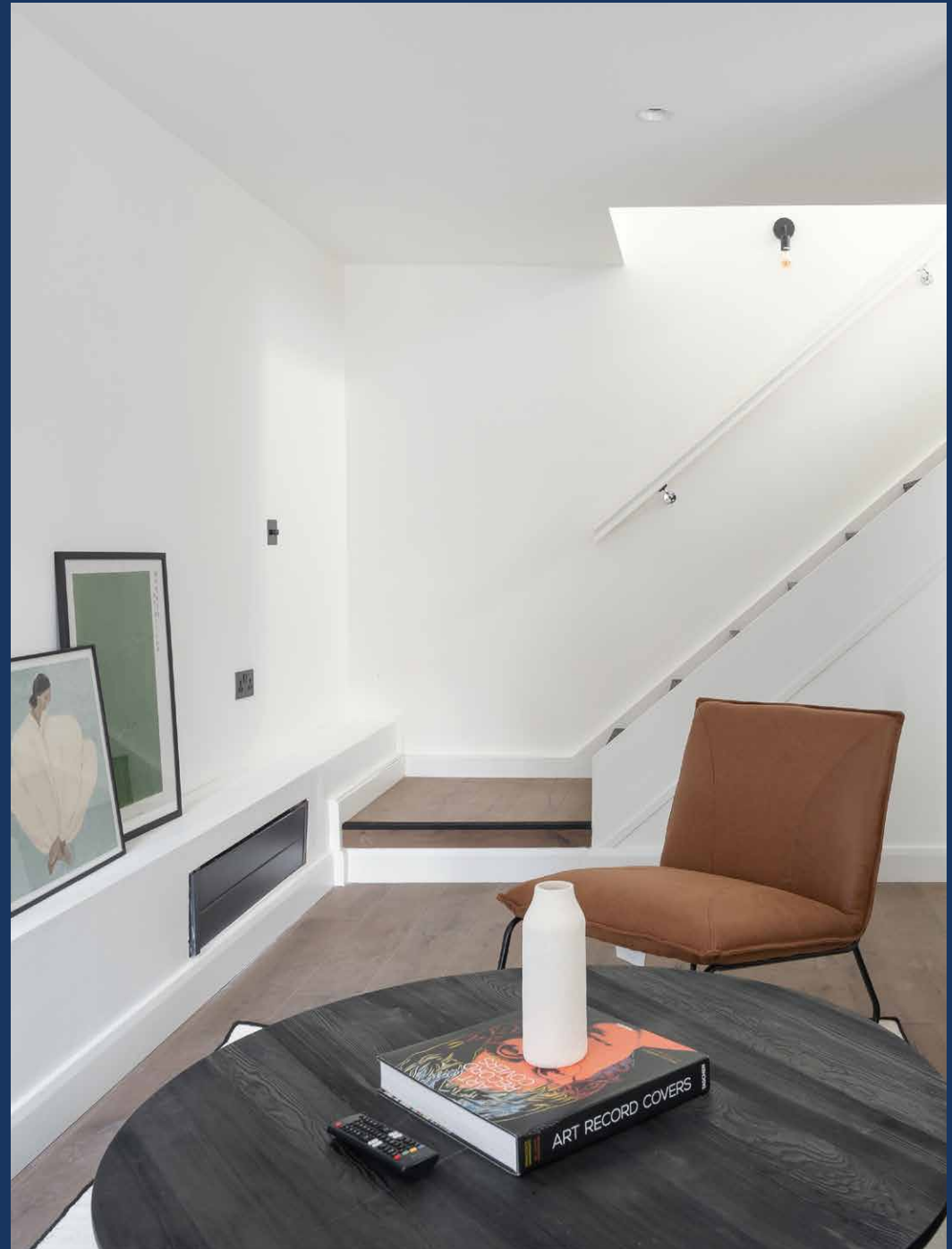


domus
stay.

The WIK Coach House

Queen's Park W9

3 Bedrooms, 2 Bathrooms
For 6 guests





Coach house chic. A historic structure given a contemporary lease of life

Rustic, latticed-glazed wooden doors lend a bucolic undertone to this three-bedroom home, while clean-lines and white walls nod to its modern incarnation at a photography studio site. Contemporary furnishings and design relics that draw on the history of its location and have been thoughtfully blended under the watchful eye of interior designer Tala Fustok to create a functional, welcoming space.



Take the party outside to the lawned terrace where you can admire the original brickwork of the building, drink in hand.

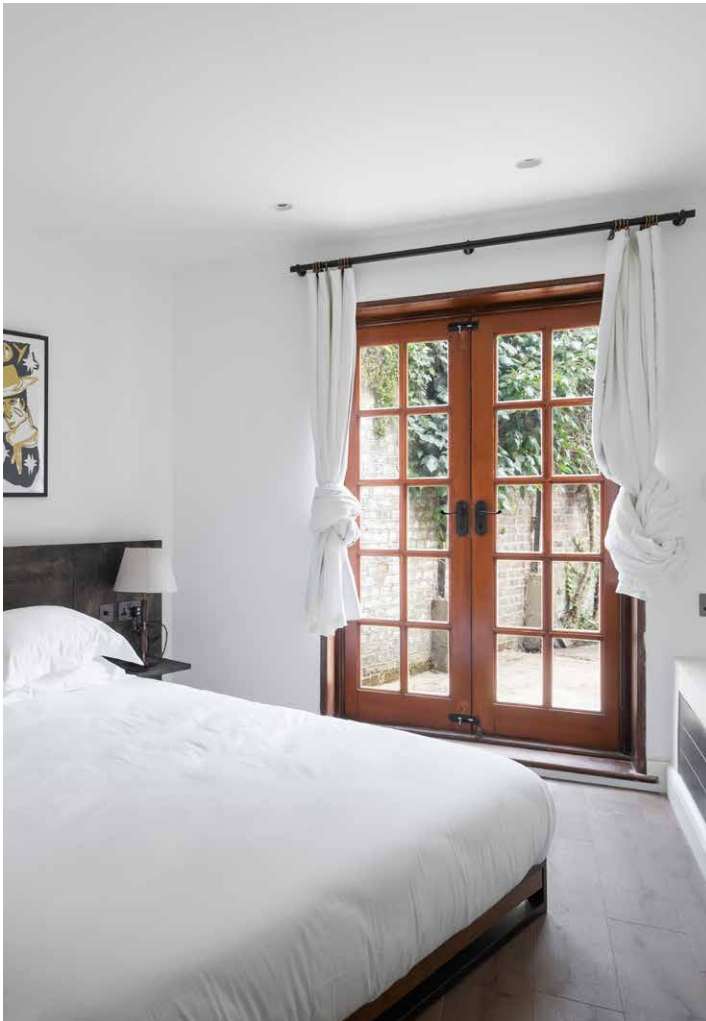
A black Häcker kitchen commands attention in the open-plan living room, where a generous island that doubles as a breakfast bar calls for leisurely weekend brunches over broadsheet papers. Contrasting wooden and Chroma flooring is used to subtly separate the eating and lounging zones, adding a seamless flow to the space. Delegate the evening's menu from the comfort of the sink-into sofa in the cosy seating area or curl up for a night in front of the box.

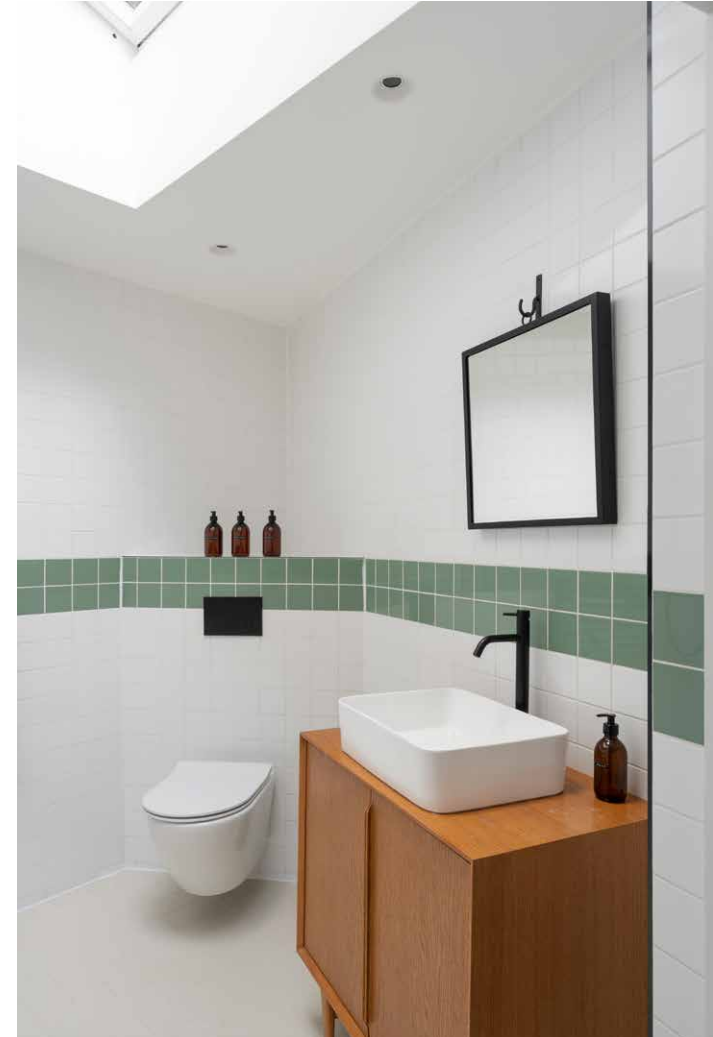


The understated aesthetic continues in the bedrooms – one complete with sleek en-suite shower room on the ground floor – and two more upstairs. Bright white walls provide a canvas for playful prints and white drapes softly diffuse the light from the floor-to-ceiling doors in the master, which can be flung open onto the terrace outside.

“

Uncluttered and free of distractions, set yourself up for a good night's sleep.





The bathrooms are similarly kitted out for relaxation, thanks to the soothing Solus tiles and a skylights that lets sunshine flood in over the bath with shower.

LOCATION

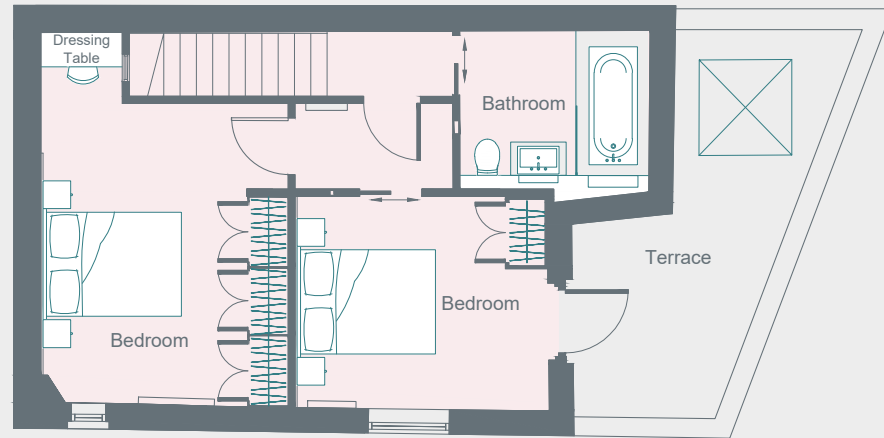
Lap up all that the independent treasure trove of Queen's Park has to offer, including its 30-acres of glorious green space.

Brunching at local Aussie favourite Milk Beach will set you up for a day of exploring – think avocado on toast and then some. Take a stroll along Chamberlayne and Salisbury Roads, the beating heart of this community-minded enclave and, if you're still hungry, refuel with a truffle-oil soaked pizza at Sacro Cuore, or a sushi platter at Michiko Sushino. For a special celebration, book a table for homemade pappardelle at the pretty and welcoming neighbourhood spot Ida. Finish up the evening with a spot of culture by catching a flick at the Lexi, a community cinema run by volunteers.

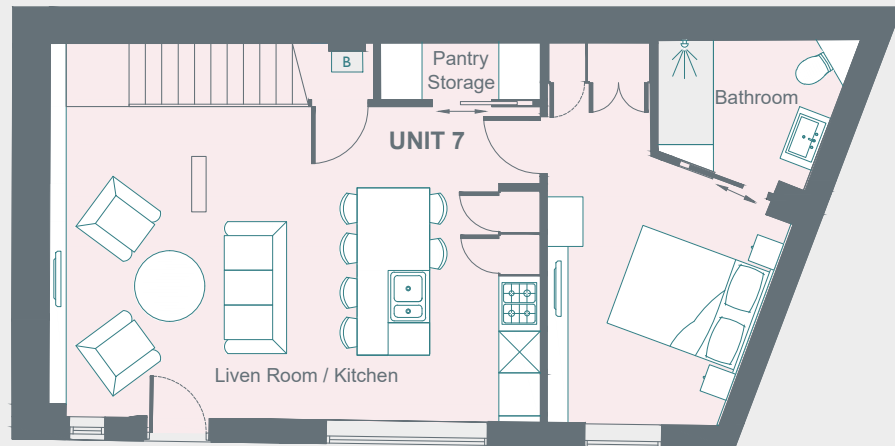


PROPERTY HIGHLIGHTS

- Coach house set over two floors
- Open-plan reception room
- Master suite
- Two further double bedrooms
- Adjoining terrace
- Unique design features
- Exposed wooden beams
- Light and airy



First Floor



Ground Floor



Please don't hesitate to get in touch if you have any questions or require any further information.

hello@domusstay.com

+44 (0)20 8168 8880

Domus Stay provides the perfect combination of property, place and personal service for the world's most remarkable people. If you have any questions, or if we can help in any way, please contact us on the above number. Be it about a property you have, a property you want, dates to check or any special requirements you may need, we'd love a chat.

