

domus  
stay.

---

# The WIK Studio

Queen's Park W9

1 Bedrooms, 1 Bathrooms  
For 2 guests

---





## Coach house chic. A historic structure given a contemporary lease of life

Rustic, latticed-glazed wooden doors lend a bucolic undertone to this three-bedroom home, while clean-lines and white walls nod to its modern incarnation at a photography studio site. Contemporary furnishings and design relics that draw on the history of its location and have been thoughtfully blended under the watchful eye of interior designer Tala Fustok to create a functional, welcoming space.



Floor-to-ceiling windows and doors that open onto the courtyard let natural light flood in.

Simplicity lends a touch of tranquillity that lets statement details do the talking. Standing in dramatic contrast to the monochrome backdrop, there's a black Häcker kitchen kitted out with everything the keenest cook could need to whip up a culinary triumph. A mirrored splashback reflects the dining area to create the illusion of depth and open up the room even further.



When it's time to retreat to bed, it's a short step up to the sleeping zone, where fluid, pure white curtains can be drawn to cocoon the space, separating it completely from the rest of the living area. Come morning, peel back the reams of fabric to survey the quiet courtyard outside through the floor-to-ceiling windows, or eye up the Nespresso machine, before diving back under the duvet, coffee in hand.

“

The clash of black and white makes a bold statement, adding to the feeling of space.



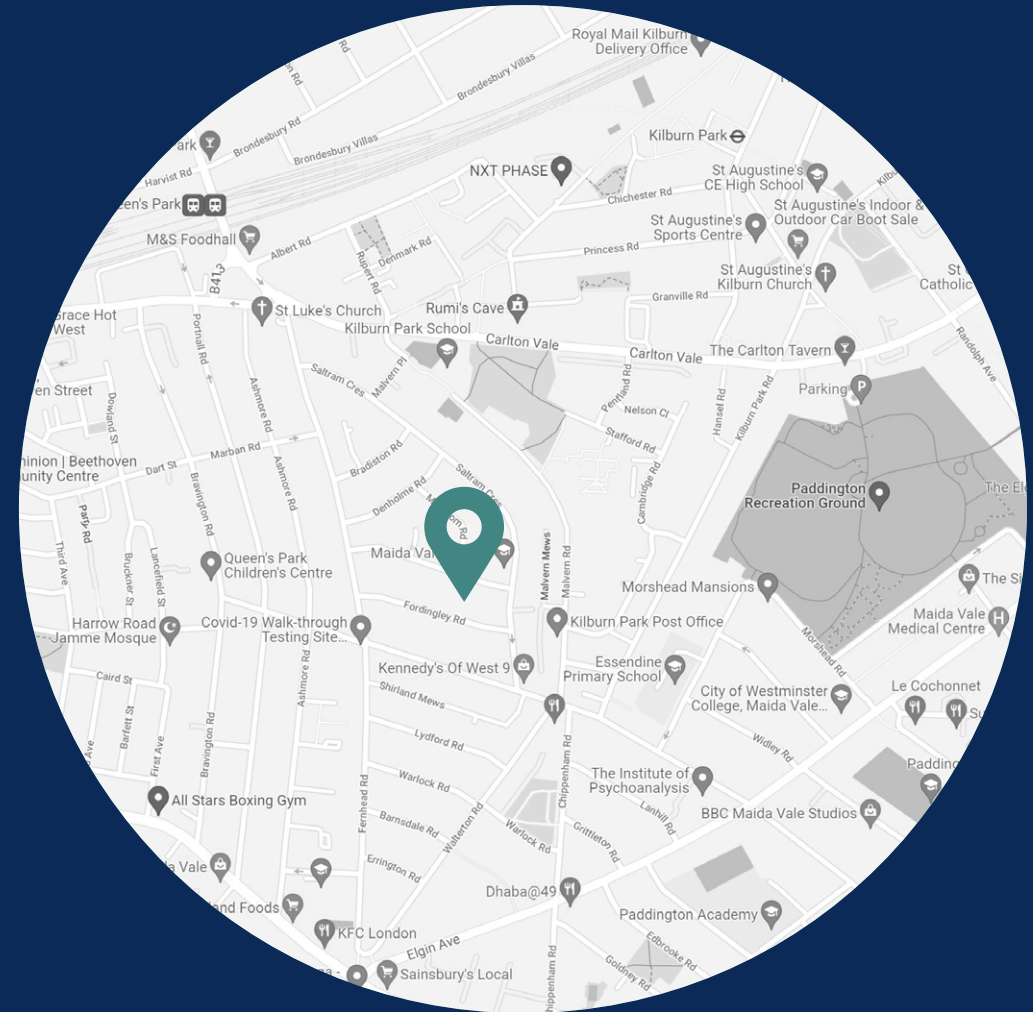


The sage green Solus tiles in the bathroom next door provide a refreshing pick-me-up to complement the black and white theme. Relaxation is assured thanks to the large rainfall shower positioned over an inviting bathtub.

## LOCATION

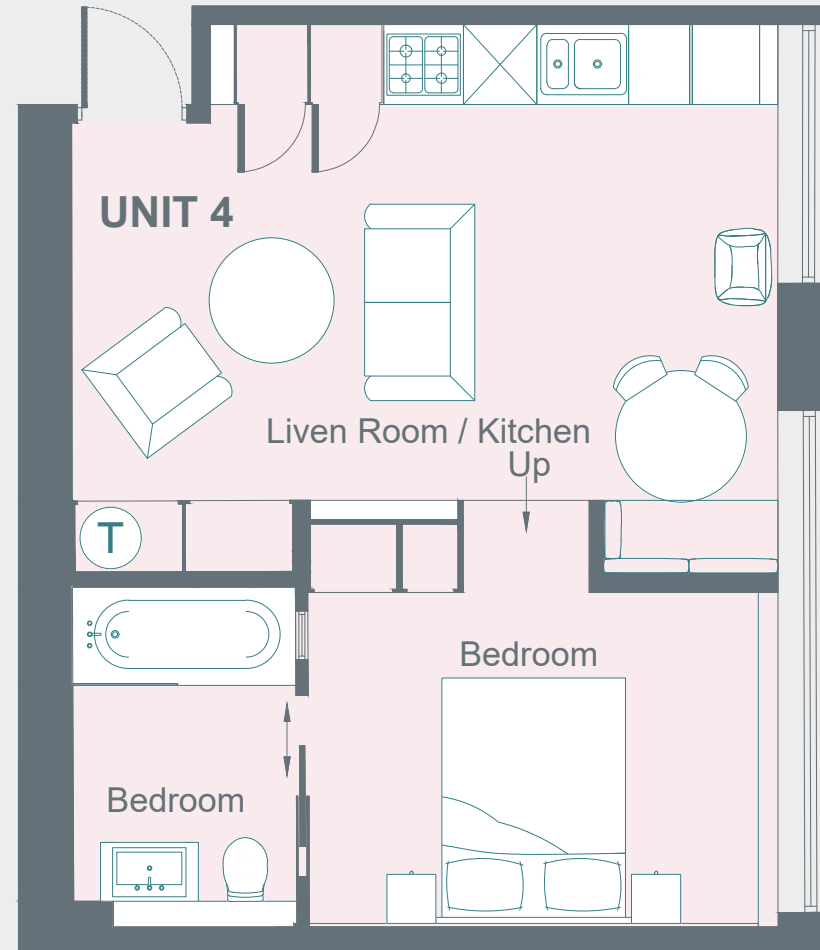
The independent buzz of verdant Queen's Park and its crowning glory - 30-acres of green space - are on your doorstep.

Start your days off in an energising way, with a hot yoga session at Fierce Grace before exploring the main Queen's Park tributaries of Chamberlayne Road and Salisbury Road, lined with independent businesses and eateries. Peruse the paperbacks at Queen's Park Books, watch as sushi chefs prepare nigiri before your eyes at Japanese joint Michiko Sushino, or tuck into hand-rolled pasta served on white linen at favourite neighbourhood haunt Ida. On Sundays, shop for fresh produce at Queen's Park Farmers' Market, or take a stroll around the area's namesake green space – a dose of escapism any day of the week.



#### PROPERTY HIGHLIGHTS

- Coach house set over two floors
- Generous pen-plan living space
- Master suite
- High-spec Häcker kitchen
- Unique design features
- Light and airy



## Ground Floor





Please don't hesitate to get in touch if you have any questions or require any further information.

---

[hello@domusstay.com](mailto:hello@domusstay.com)

+44 (0)20 8168 8880

Domus Stay provides the perfect combination of property, place and personal service for the world's most remarkable people. If you have any questions, or if we can help in any way, please contact us on the above number. Be it about a property you have, a property you want, dates to check or any special requirements you may need, we'd love a chat.

