

domus  
stay.

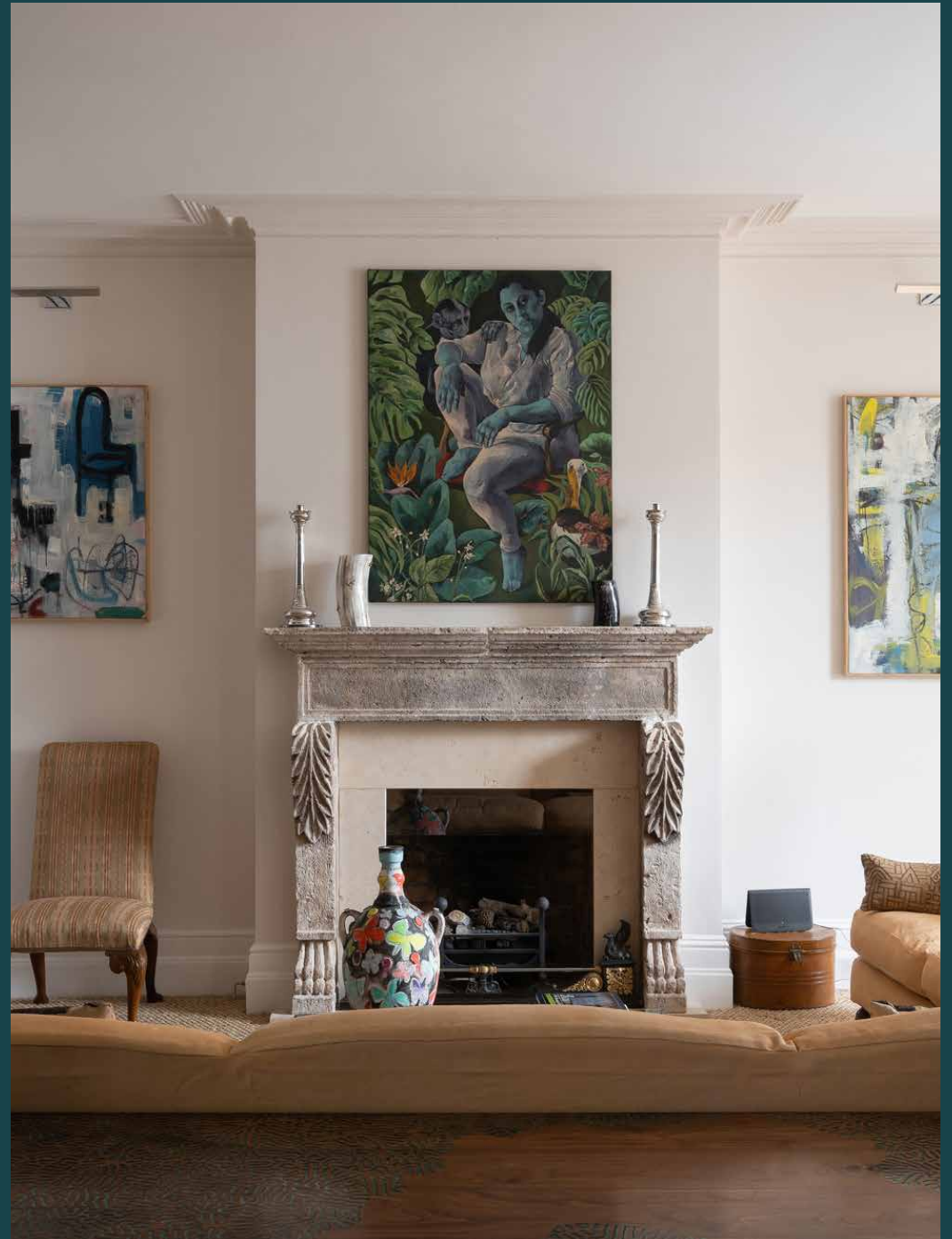
---

# Hereford Mansions

Notting Hill W2

2 Bedrooms, 2 Bathrooms  
For 4 guests

---





**Eclectic interiors set within a grand mansion block, this two-bedroom home is a thoughtfully curated work of art.**

With elegant touches and considered style, this remarkable two-bedroom apartment is an exercise in refined design. Past a redbrick exterior, find a lovingly curated home where striking artwork lines the walls. Down a long hallway, double doors open into an expansive, south-east facing reception room, an undeniably grand affair.

Airy proportions are maximised by floor-to-ceiling bay windows which perfectly channel natural light. Sip your morning coffee next to the Paolo Piva coffee table as the sun comes up and curl up by the ornate period fireplace as the sun sets. A tonal palette makes the assortment of colourful artwork pop; sit back on the sofa and become a spectator at your own private art gallery. Bibliophiles will flock to the back wall, entirely comprised of fitted floor-to-ceiling bookshelves and complete with a ladder for endless browsing.

A large wood table makes the perfect reading spot or home workspace.

Through another set of double doors, a contemporary kitchen awaits. Infused with a playfulness from duck-egg hues, a characterful splashback and striped seating, let your imagination flourish here. Think evenings cooking creative dishes for friends, served up under the light of the wicker chandelier.









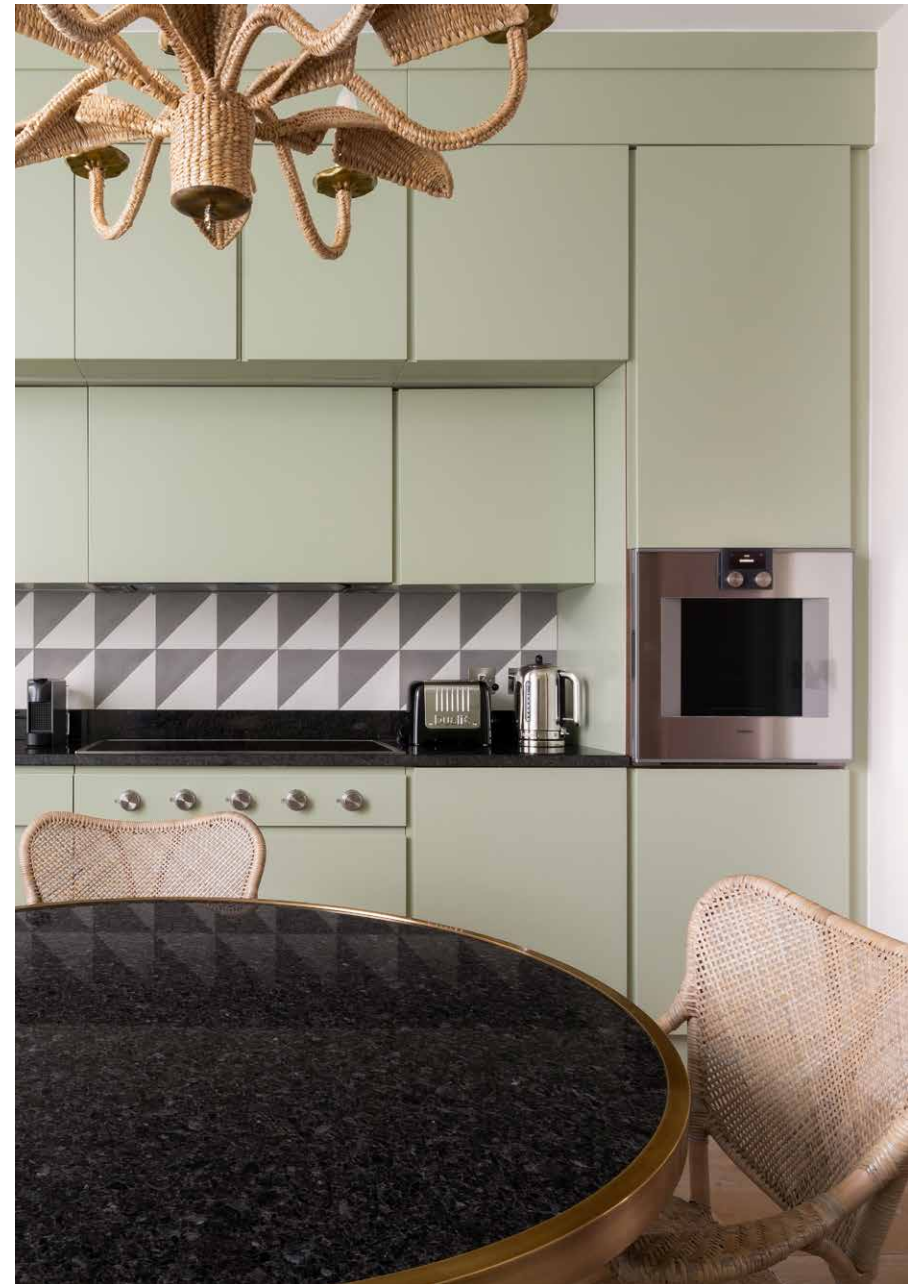
On the doorstep of Notting Hill, an immaculately finished apartment brimming with unique style and period touches.



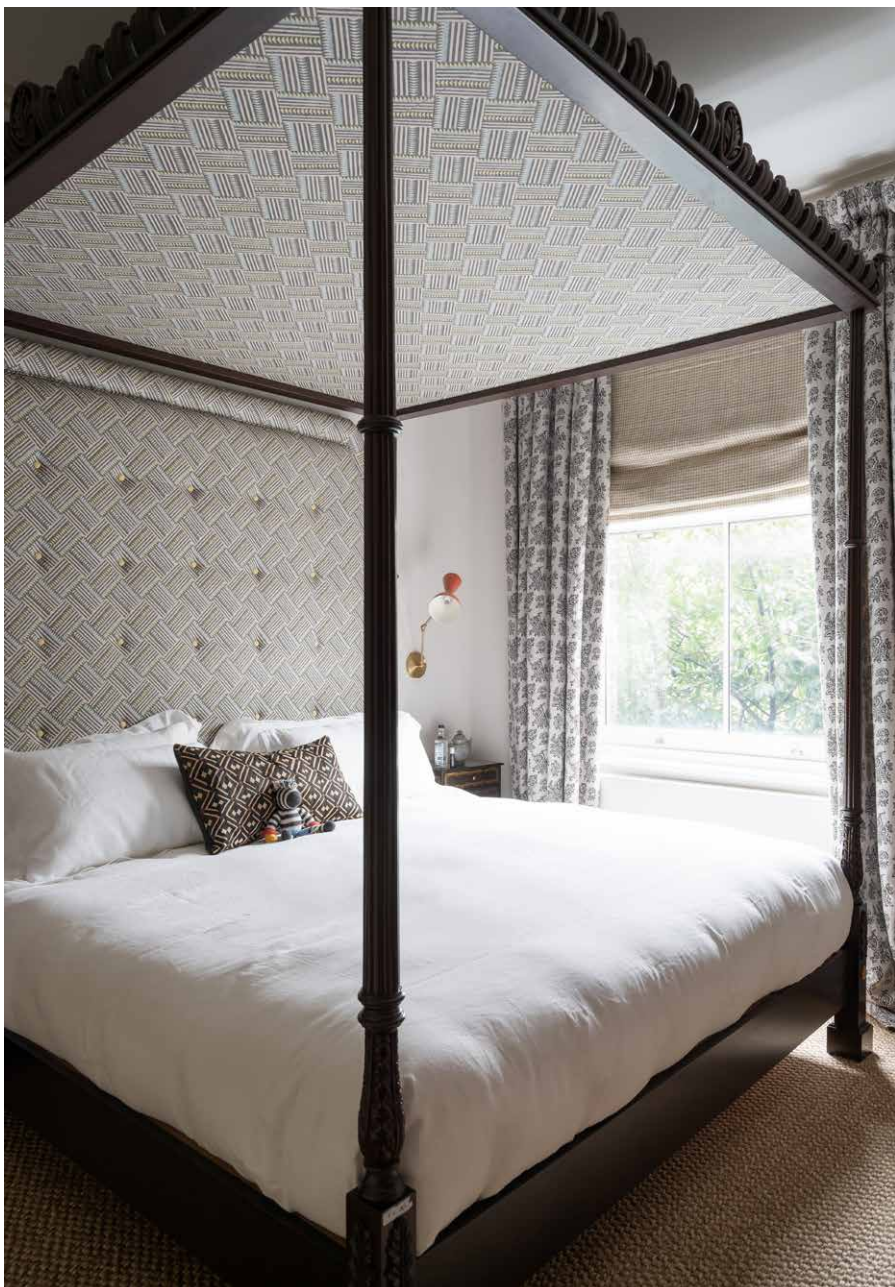
Floor-to-ceiling bookshelves are an avid reader's dream. While away afternoons on the sofa with a good book.



A charming space with modern touches, integrated storage and a sleek dining table.







Along the corridor, find two spacious double bedrooms, both bursting with unique touches. In the master, a mahogany four-poster bed is the focal point, with its intricately designed frame and geometric woven canopy. The room is served by a family-sized en suite. Next door, another generous and bright double ignites the senses. In the centre of the room, a vivid bed with patterned headboard makes a statement, imbuing whitewashed walls with reams of character. Sharing the floor is a neat shower room and charming cloakroom, complete with herringbone marble flooring and sophisticated safari print wallpaper.

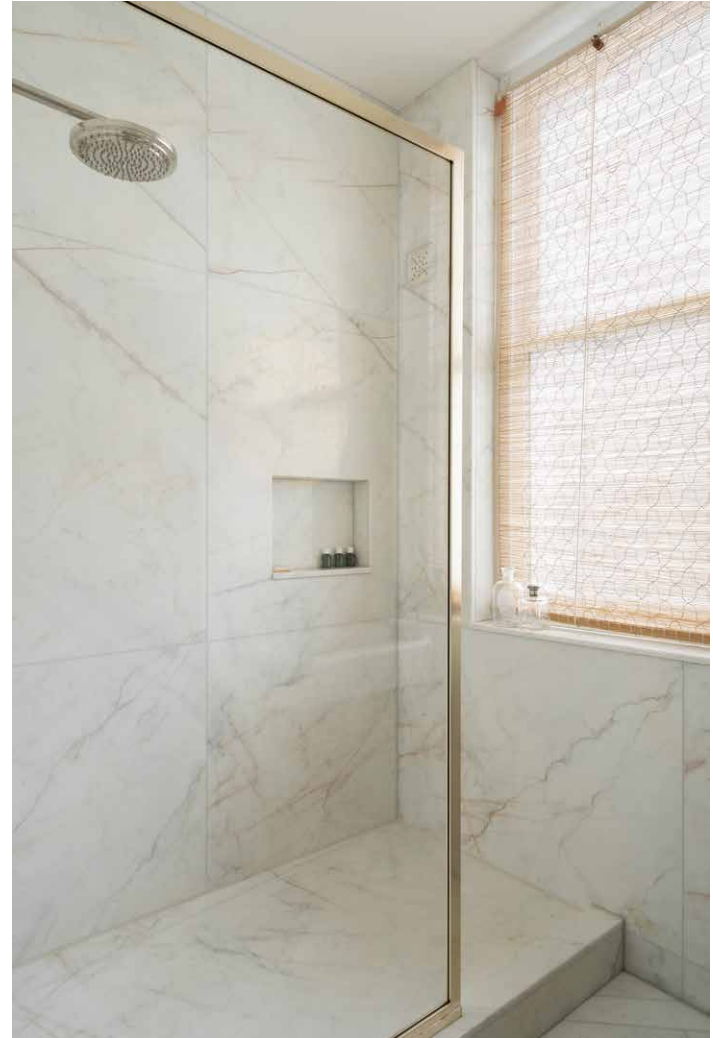


















## LOCATION

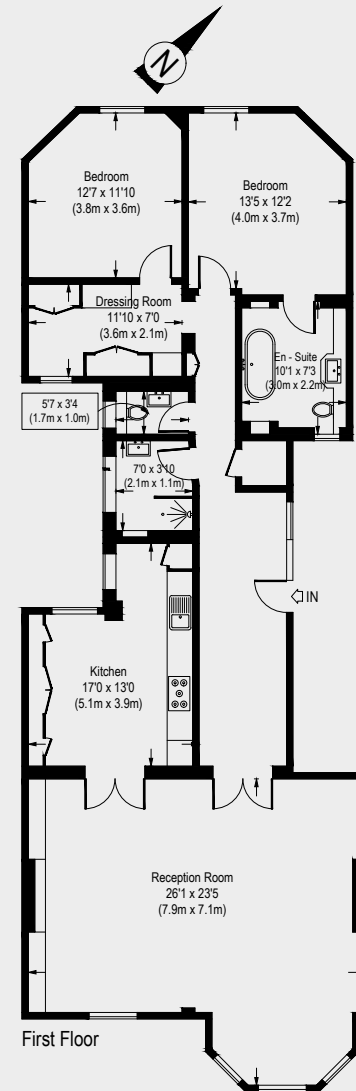
### Located just moments away from the social heart of Notting Hill.

Hereford Mansions is perfectly positioned to immerse yourself in the buzzing atmosphere of Westbourne Grove and enjoy all the eateries, bars and boutiques situated on this vibrant thoroughfare. Start your day with an energising class at Psycle and follow it up with an invigorating juice from Farmacy. Further along the road, browse scents at Diptyque or Nordic furniture at Modernity. For a bite to eat, you can never go wrong with a healthy brunch at Granger and Co, within walking distance. Explore the hubbub of Notting Hill at Portobello Road Market, a dynamic gathering of antiques traders and street food sellers alike. Or, for calmer surroundings, take a much-needed stroll through Kensington Gardens or Hyde Park, both on your doorstep. Bayswater is the nearest station [Circle and District Lines].



## PROPERTY HIGHLIGHTS

- Open-plan reception room
- Contemporary kitchen
- Master bedroom suite
- Guest bedroom with walk-in wardrobe
- Guest bathroom
- Cloakroom
- Portered block
- City of Westminster







Please don't hesitate to get in touch if you have any questions or require any further information.

---

[hello@domusstay.com](mailto:hello@domusstay.com)

+44 (0)20 8168 8880

Domus Stay provides the perfect combination of property, place and personal service for the world's most remarkable people. If you have any questions, or if we can help in any way, please contact us on the above number. Be it about a property you have, a property you want, dates to check or any special requirements you may need, we'd love a chat.

