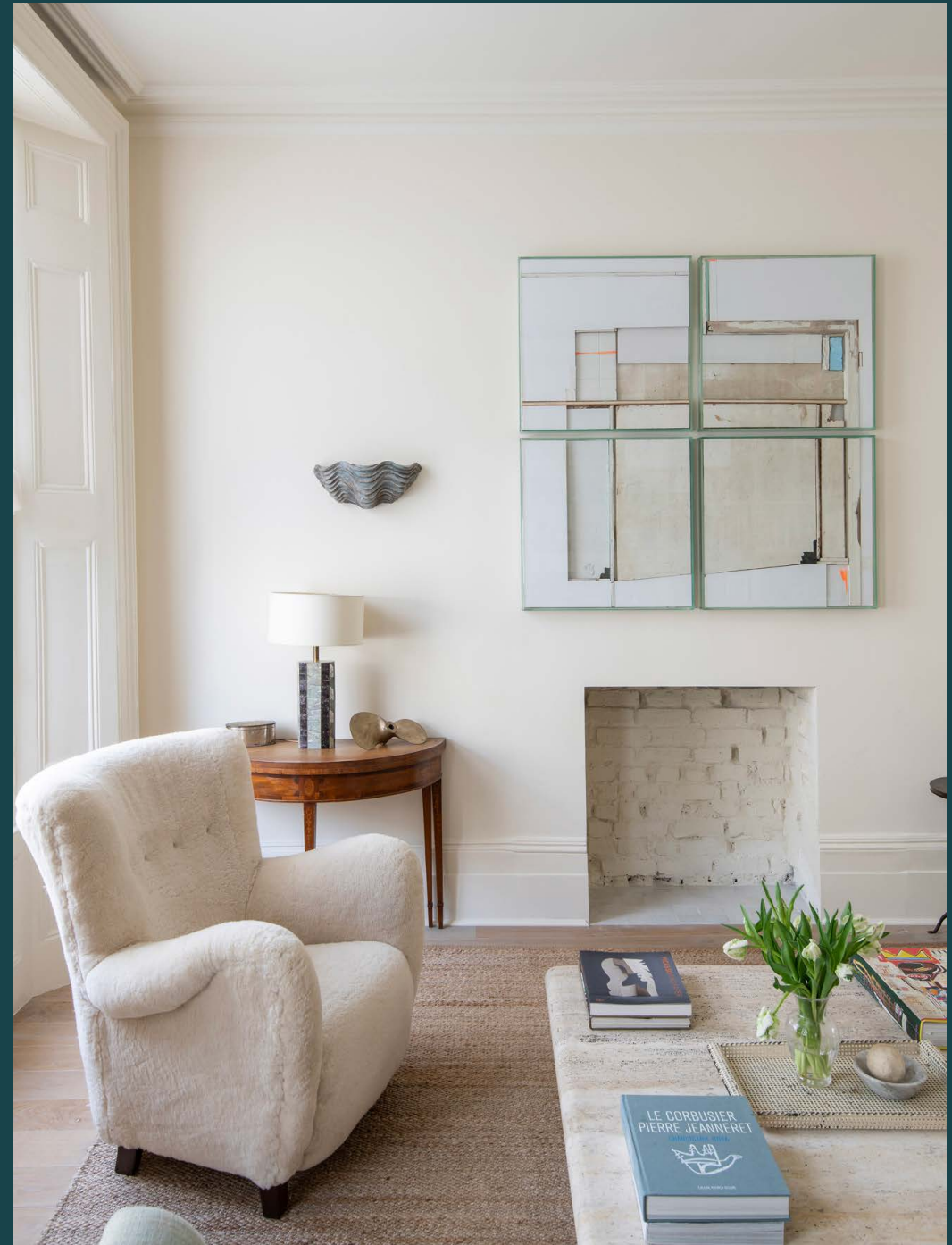


domus
stay.

Ladbroke Crescent

Notting Hill W11

4 Bedrooms, 4 Bathrooms
For 8 guests





Treading the line between traditional and contemporary, this four-bedroom Notting Hill townhouse comes with four floors of sophisticated living spaces.

Among a row of brightly toned townhouses, this striking steel blue façade makes a bold statement. Inside, its impressive period footprint comes styled with soothing hues and sunlight to form an idyllic urban retreat.

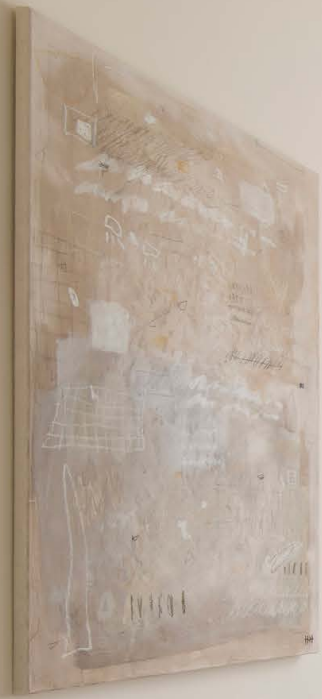
Past a refined raised entrance, monochrome marble tiles exude an immediate air of grandeur. Ornate period features and an intricate glass chandelier adorn the ceiling, accentuating lofty heritage proportions.

A transition to blonde wood flooring distinguishes the open-plan kitchen and dining room, where reams of sunlight afford an inviting ambiance. With natural wood architrave and a farmhouse-style sink, a subtle rustic charm imbues the space. Sleek cabinetry wraps around the walls, leaving ample room to cook up a storm or lounge across the marble-topped breakfast bar. An adjacent marble table sets the stage for sophisticated dining or leisurely breakfasts, complete with a scenic backdrop courtesy of a Crittall glass wall. From here, a decked terrace is your own private sanctuary for morning coffees.









“

Sash windows illuminate a myriad of textural detail, from a sandy toned rattan rug to an exposed brick alcove.





Things take a more modern turn across the garden level, where concrete-finish flooring encompasses an expansive kitchen and living space. Head out through French doors to the enclosed south-west facing garden. Complete with a bedroom and shower room, this floor makes for a relaxed self-contained studio.

Upstairs, a palette of teal tones styles the first floor double reception room. Sash windows illuminate a myriad of textural detail, from a sandy toned rattan rug to an exposed brick alcove. Spanning the room's width, bespoke beige cabinetry simultaneously serves as a bookshelf and bar.



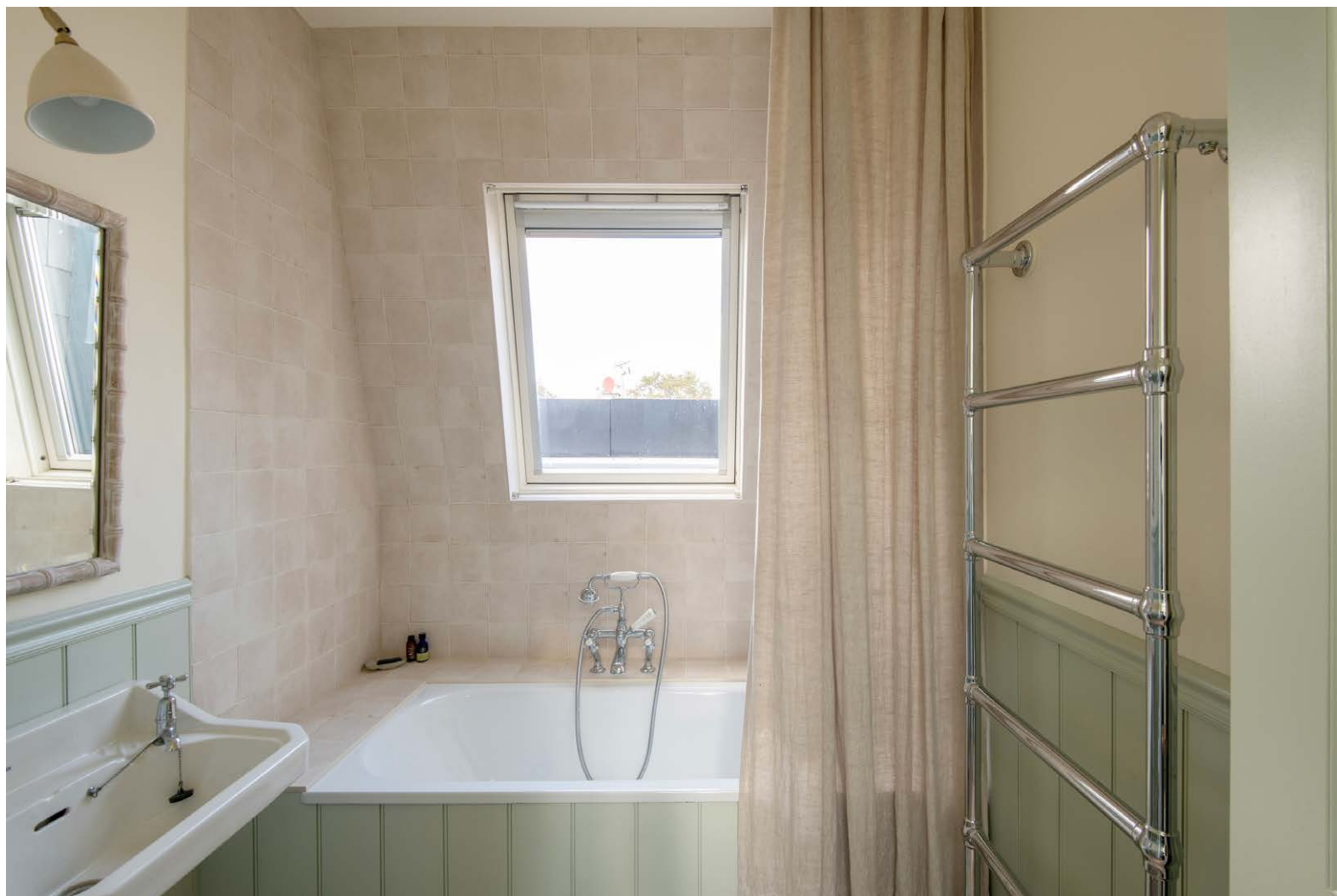








Occupying the second floor, soothing tones and textures create calm in the principal bedroom suite. A large plush bed dominates the space, while a wall of sleek fitted wardrobes keeps things serene. A sliding door draws back to connect the en suite, where tonal peach tiles reflect a pearly glow. Enjoy leisurely soaks in the bathtub or refresh in the separate rainfall shower. A large skylight illuminates the stairwell on the third floor, where two further bedrooms can be found – both in tranquil tones with hints of soft green. A skylit family bathroom in pale pink and sage – complete with a bathtub – serves these bedrooms.









LOCATION

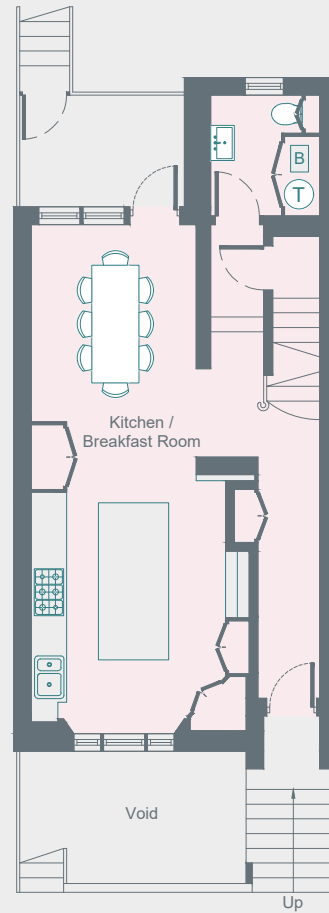
Ladbroke Crescent is just minutes away from the array of eateries and boutiques that characterise Portobello Road.

Try SoulCycle for an uplifting workout, before sampling an artisan coffee from Farm Girl as you browse the eclectic vintage stores. An evening's entertainment at The Ginstiute or infamous Electric Cinema, then an exquisite meal at three-Michelin-starred Core by Clare Smyth. With Ladbroke Grove tube station just a two-minute walk away, there's easy access to the centre of London and beyond.

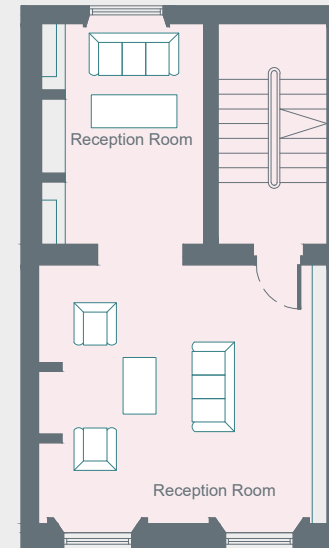


PROPERTY HIGHLIGHTS

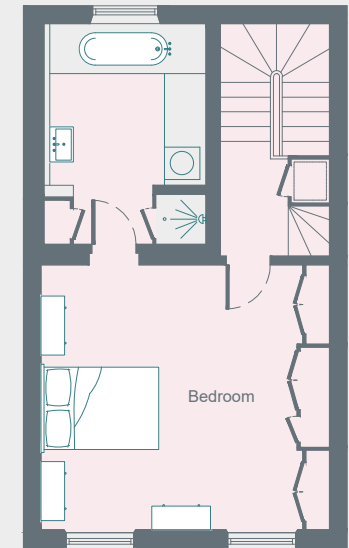
- Open-plan kitchen and dining room
- Double reception room
- Additional open-plan kitchen and reception room
- Principal bedroom suite
- Three further bedrooms
- Family bathroom
- Shower room
- Two offices
- Terrace
- South-west facing garden
- Royal Borough of Kensington & Chelsea



Ground Floor



First Floor



Second Floor

Approximate Area = 214.8 sq m / 2312 sq ft
Including Limited Use Area (1.9 sq m / 20 sq ft)

Drawn for Illustration Purposes Only
fourwalls-group.com 1014781

domus
stay.

Please don't hesitate to get in touch if you have any questions or require any further information.

hello@domusstay.com

+44 (0)20 8168 8880

Domus Stay provides the perfect combination of property, place and personal service for the world's most remarkable people. If you have any questions, or if we can help in any way, please contact us on the above number. Be it about a property you have, a property you want, dates to check or any special requirements you may need, we'd love a chat.

