

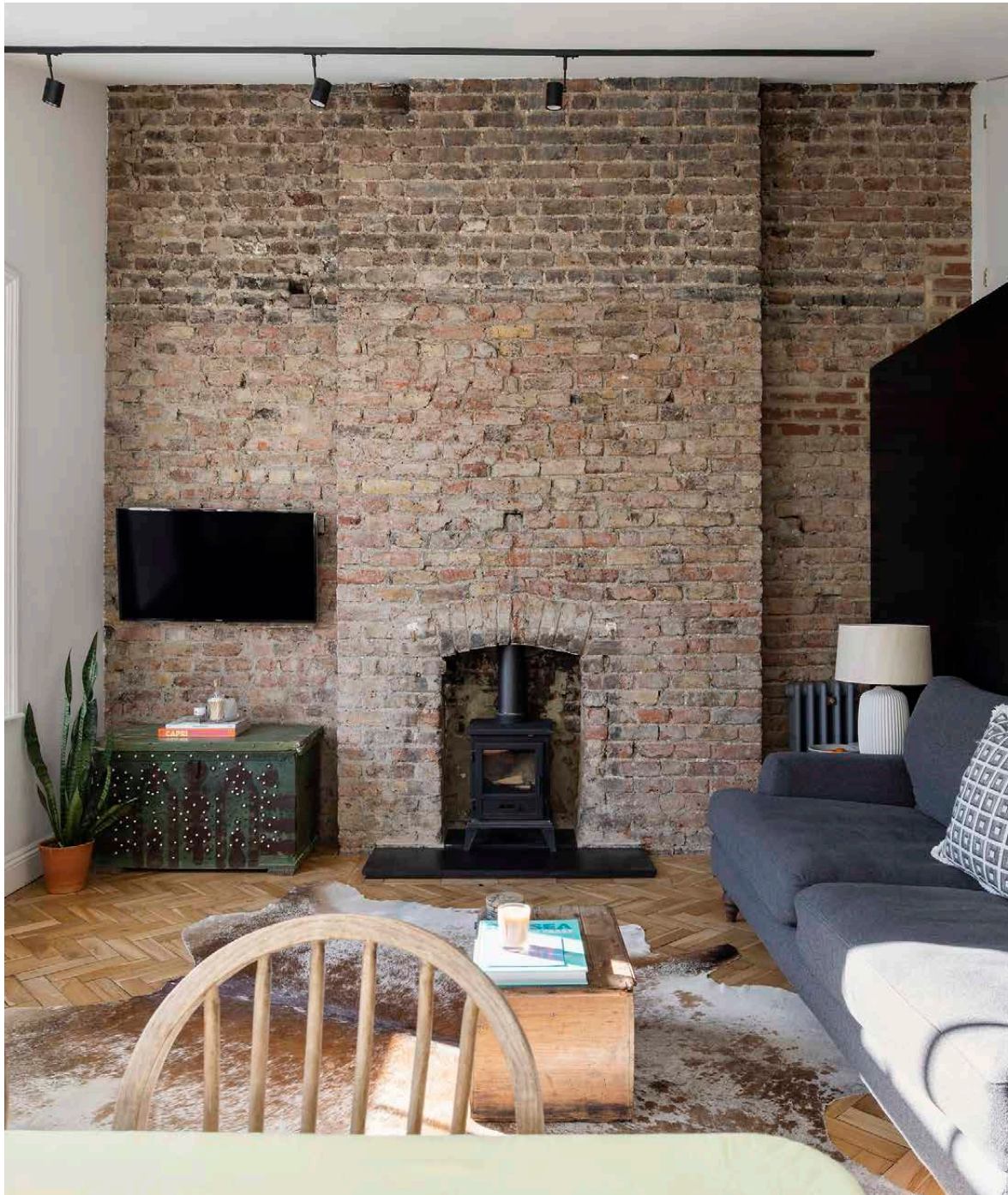
domus
stay.

Chesterton Road

North Kensington

1 Bedroom, 1 Bathroom
For 2 guests



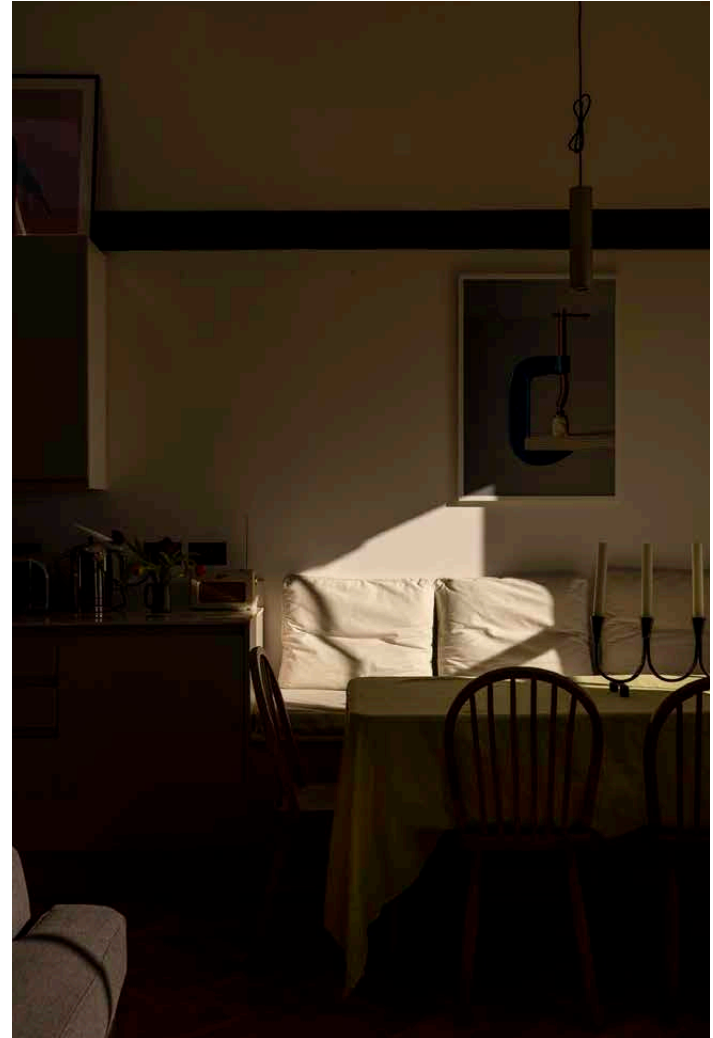


Rewriting the rules on conversion flats, this architect-designed one-bedroom apartment is a lesson in materiality. Plus, a suntrap roof terrace.

Crafted by design masterminds Valerie and Felix von Bechtolsheim, exposed brickwork, a high, butterfly-vaulted ceiling, steel beam girder and real log burner are just some of the features that set this one-bedroom home in North Kensington apart from its more traditional neighbours.

Enter a spacious open-plan reception room and kitchen, immaculately-laid with pale parquet floors and illuminated through sash windows and skylights. Integrated banquette seating affords a welcoming feel to the dining area, positioned next to the whitewashed culinary countertops. A mezzanine level has been installed as a cosy living space or additional sleeping nook, whilst working to accentuate the room's voluminous proportions.



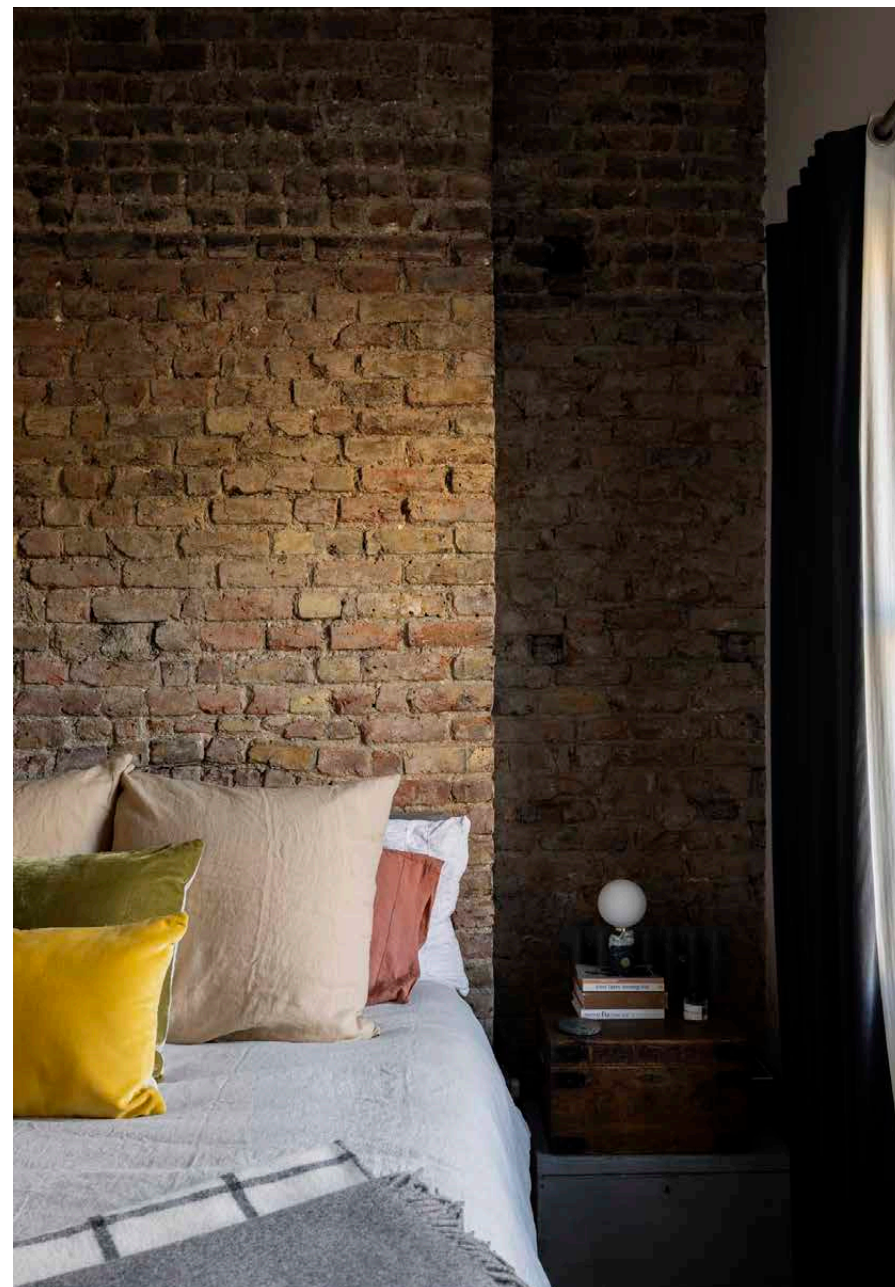
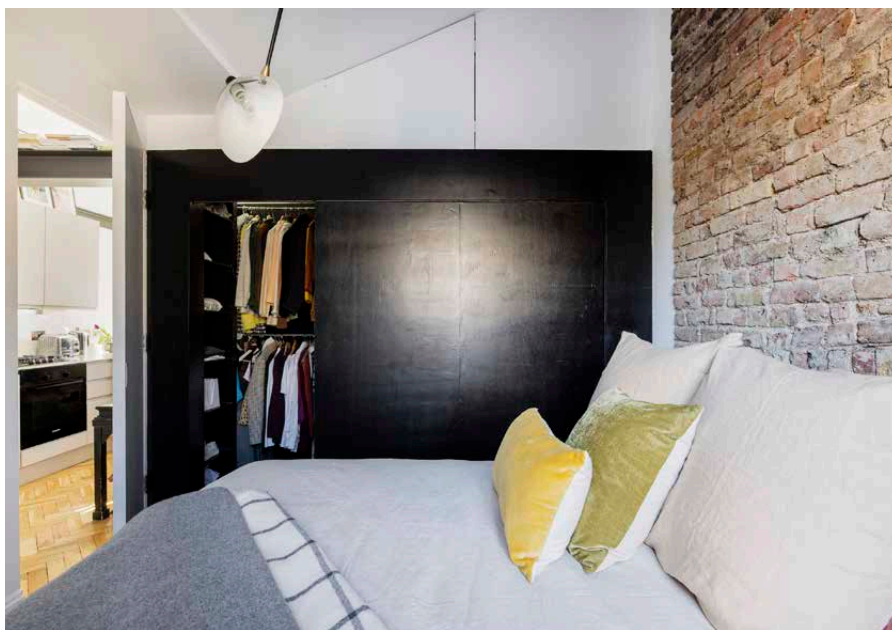


“

Valerie and Felix von Bechtolsheim's signature aesthetic palette - raw materials, tactile surfaces and pared-back colours - is employed throughout the home.



Beyond, the double bedroom has been crafted with organic materials and calming tones. Mirroring the reception room, the double bed is set against a wall of exposed brickwork. Next door, its en suite shower room showcases a marble-clad shower brilliantly-lit through a skylight. Down the corridor, access a large decked roof terrace. A reclaimed shower is an innovative addition to keep cool during London's summer months.









LOCATION

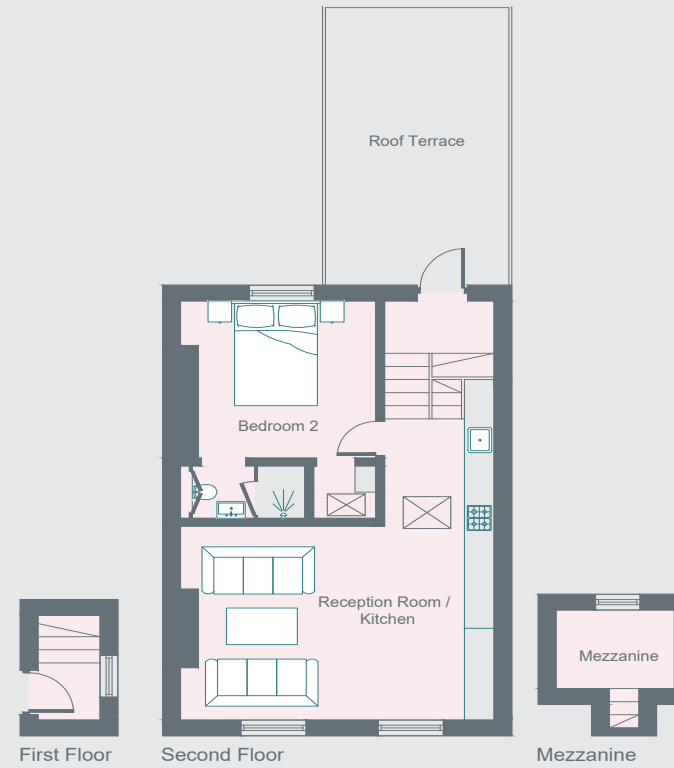
Characterised by a community of committed localists, Chesterton Road enjoys enviable proximity to some of Notting Hills most eclectic offerings.

Golborne Road vaunts a host of eateries, from Pizza East to Lisboa and Layla's Bakery. Stroll down Portobello Road and check out the array of antique stalls, before a spin class at SoulCycle or film at the Electric Cinema. Wormwood Scrubs is perfect for a weekend jog, followed by a traditional roast at Laylow. Ladbroke Grove is a stone's throw away, offering easy access into central London and beyond.



PROPERTY HIGHLIGHTS

- Architecture by Felix Von Bechtolsheim
- Open-plan kitchen and reception room
- Double bedroom with en suite bathroom
- Mezzanine sleeping area
- Large decked terrace
- Royal Borough of Kensington & Chelsea





Please don't hesitate to get in touch if you have any questions or require any further information.

hello@domusstay.com

+44 (0)20 8168 8880

Domus Stay provides the perfect combination of property, place and personal service for the world's most remarkable people. If you have any questions, or if we can help in any way, please contact us on the above number. Be it about a property you have, a property you want, dates to check or any special requirements you may need, we'd love a chat.

