

domus stay.



Ladbroke Grove

Notting Hill W11

 Bedrooms 2

 Bathrooms 1

 Capacity 4

domus stay.

About the property

A substantial art deco house in north-west London, perfect for families and friends alike.

Traditional and contemporary come together harmoniously in this two-bedroom apartment on the raised ground floor of a Georgian stucco-fronted townhouse. As you enter the hallway you'll be struck by the airiness of your surroundings, thanks to the high ceilings and generously sized bow windows. The sense of flow is enhanced by the open-plan scheme and white walls and floors, with contrasting cast-iron radiators. To your right is the open-plan kitchen and reception room, with its cosy furnishings – perfect for conversation around the contemporary electric fire – and dual aspect views over the communal garden.

The kitchen is a minimalist space with jet-black granite counters contrasting with white gloss units and integrated appliances. Savour weekend brunches or relaxed suppers at the dining table. The two bedrooms are situated at the back of the apartment and have a true sense of serenity, with their pale furnishings and, in the master, a built-in wardrobe. Serving both is a sleek bathroom with additional storage.





Light and airy living in the heart of Notting Hill.

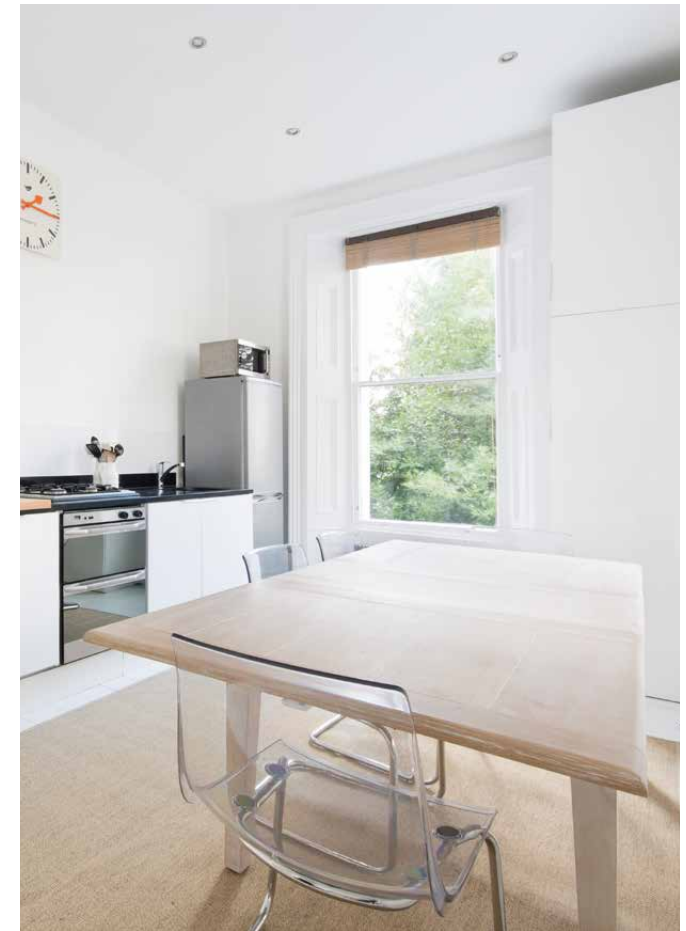
domus stay.



High ceilings and the substantial bow window ensure the apartment is light-filled on even the darkest winter day.



Get a great night's sleep in this serene bedroom.



The ideal place to breakfast, with the greenery of the communal gardens a guaranteed mood enhancer.





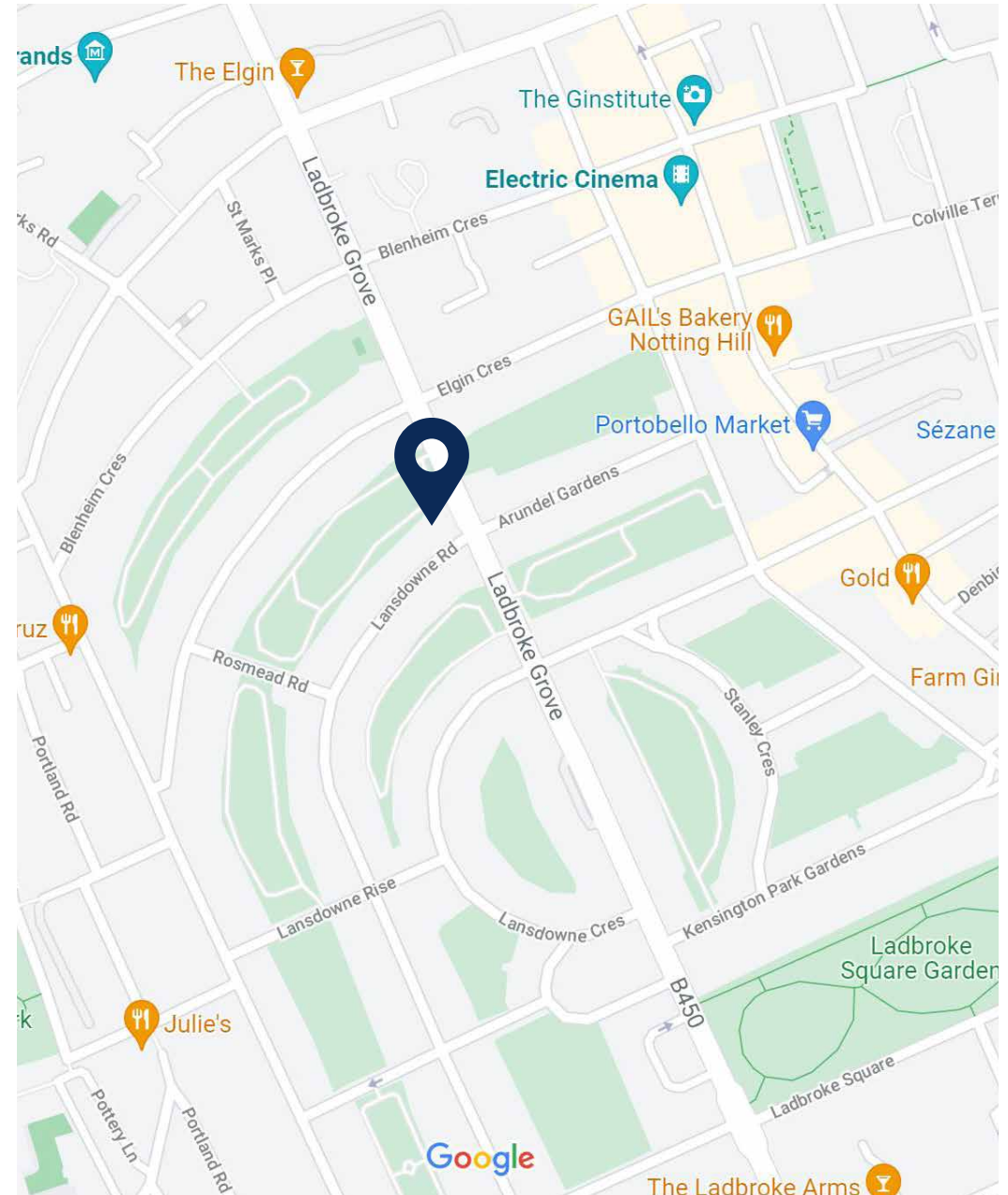
domus stay.

Location

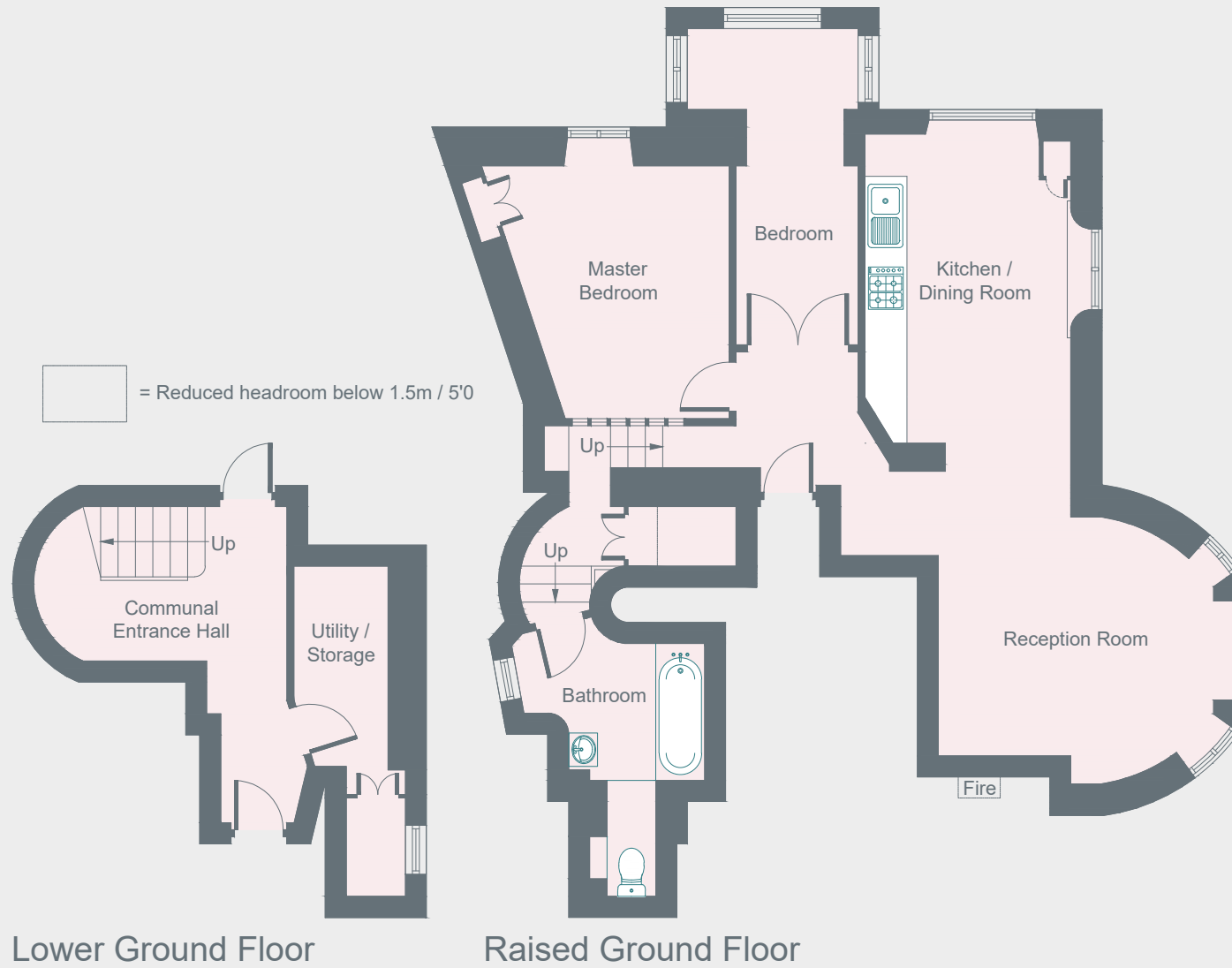
A vibrant sense of community and eclectic range of activities can be found in Notting Hill.

This two-bedroom raised-ground floor apartment sits on the corner of Ladbroke Grove and Lansdowne Road, perfectly situated both for the world-famous Portobello Market, with its eclectic array of stalls, or the upmarket shopping enclave of Westbourne Grove. Holland Park, with its expansive gardens and woodland, is just a stroll away, or indulge your love of film at the iconic Electric Cinema.

- Ladbroke Grove (6 mins)
- Holland Park (10 mins)
- Notting Hill Gate (13 mins)



Floor Plan



Approximate Area = 84.4 sq m / 909 sq ft
(Including Communal Entrance Hall)

Surveyed and drawn in accordance with the International Property Measurement Standards (IPMS 2: Residential)
fourwalls-group.com 822524



Please don't hesitate to get in touch if you have any questions or require any further information.

hello@domusstay.com

+44 (0)20 8168 8880

Domus Stay provides the perfect combination of property, place and personal service for the world's most remarkable people. If you have any questions, or if we can help in any way, please contact us on the above number. Be it about a property you have, a property you want, dates to check or any special requirements you may need, we'd love a chat.

