

domus
stay.

Winterbourne Estate

THE COTSWOLDS & COUNTRY

Up to 15 bedrooms and 30 guests





In the gentle Somerset hills, within striking distance of Glastonbury, the everyday slows at this wellness-focused estate for rent, wrapped in 35 acres of countryside.

Named after the winter stream that ebbs through the grounds, Winterbourne Estate is shaped by the seasons. Oak trees flush russet in autumn, greenery carpets the spring and summer, and the constant, calming trickle of water soundtracks the final months of the year.

Surveying it all, an 18th century manor house that's outwardly altered little in the intervening centuries despite its cutting-edge amenities – from longevity-inspired treatment rooms to a state-of-the-art sauna. When combined with two self-contained cottages – Court Cottage and Ford Cottage – the estate offers an expansive footprint to connect on every level. Depending on requirements, guests have the choice of renting the entire estate, the main house, or the cottages separately.

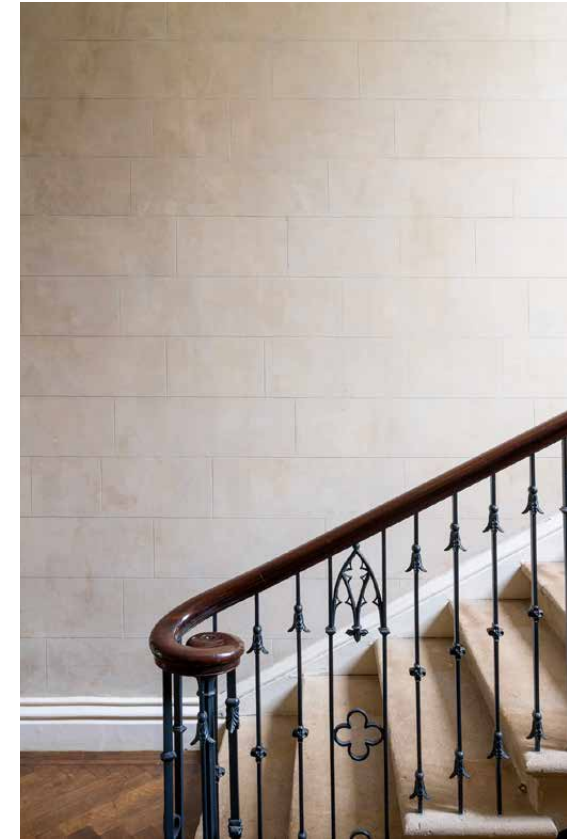


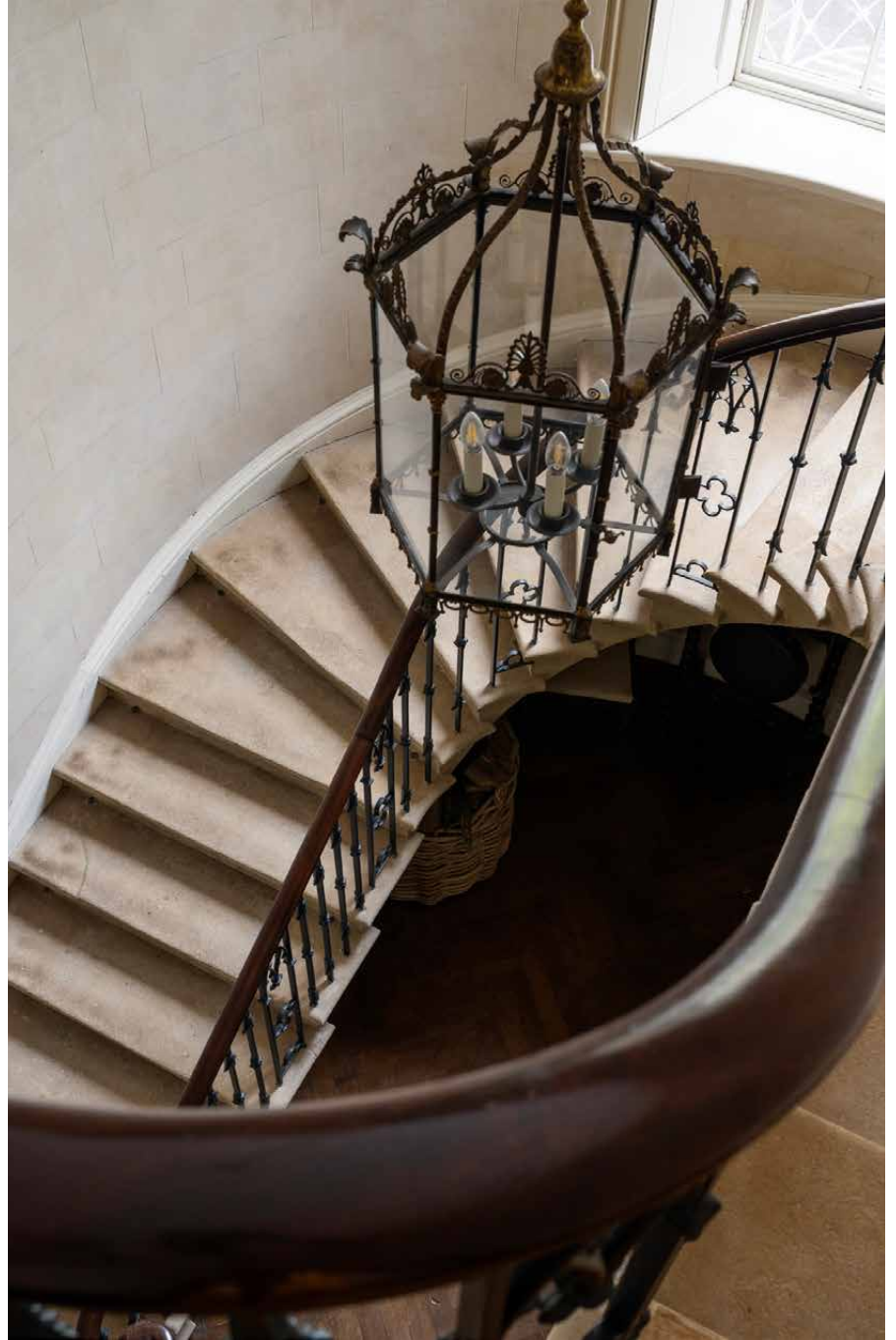




History

There's an unhurried feel to Winterbourne Estate that stems from its rich and enduring history. Commissioned by Reverend Richard Ford in 1792, the former rectory sits under the watchful gaze of St Mary the Virgin Church, where 700 years of continuous worship have taken place – and where fleeing monks once tunnelled an escape route from chapel to manor house. Strawberry Hill Gothic architecture makes a statement: all honey-toned stone, Y-traceried windows, battlemented parapets and a grand hamstone porch straight out of a period drama.







Wellness & Leisure

Restorative wellness rituals are an integral part of the Winterbourne experience. Inspired by the rejuvenating setting, a team of therapists, longevity specialists and trainers applies a holistic approach to health and fitness.

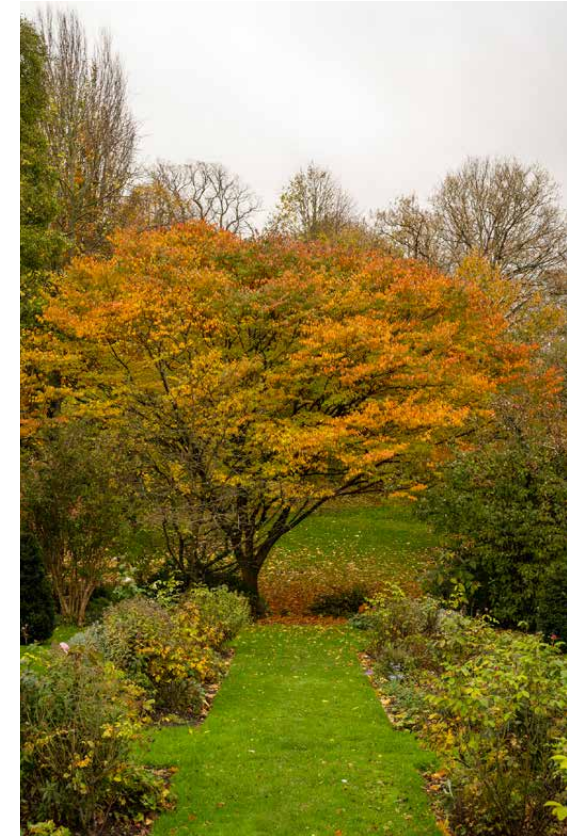
Begin and end each day with invigorating fire and ice routines, dipping between traditional Japanese onsen baths and a spectacular sauna. Ease tension and restore balance with a massage in the dedicated spa or unlock a detailed health profile with a comprehensive blood analysis. Meanwhile, a restored barn provides an underfloor-heated hub for matt-based and aerial yoga, gym classes, breath workshops, sound healing or meditation in front of a roaring fire.



Outside space

With Dorset horn sheep grazing on the fields, the wider estate paints a picture-perfect pastoral scene. Majestic spreading Holm oaks and a castellated yew hedge add natural structure to abundant grounds landscaped by Keith Anderson. Ramble through the long-grassed orchard and wild gardens or unwind with a few laps of the heated swimming pool tucked within its own walled garden.

The cottage's covered porch is perfect for booting up for bracing walks. Just opposite, there's an outdoor dining area for al fresco nights. The treatment barn and spa are just a few steps away, well positioned for padding over in a robe and slippers.







The living spaces

A trio of living spaces stem off a main hallway with a dramatically sweeping stone staircase. There's a soothing sage-toned drawing room with mismatched sofas and armchairs, and a library that calls for a crackling fire in the hearth. Pluck a tome from the bookshelves, sink into the plushiest of seats and bask in the soft light that filters through the floor-to-ceiling windows. Just opposite, a quieter snug meets its own quota of chintzy armchairs and fabric covered lamps alongside another working fireplace and a Mahogany desk.







Kitchen & dining

The dining room is fittingly decadent: green walls, a floor-to-ceiling window and a 10-seater antique table for dinner parties beneath a regal family portrait. Gilded mirrors and voluminous proportions lend a sense of pomp while a skilled private chef and attentive staff preside over the logistics. For larger celebrations, a nearby banqueting barn seats 30 under a lofty vaulted ceiling. Old oak beams and exposed brick dial up the ambiance, while an adjoining professional kitchen is specially designed to cater for a crowd.

Back in the main house, Versailles parquet flooring sweeps into the bright kitchen, the domain of the house manager and chef. The farmhouse style space is well equipped with a large island, Aga and electric hob. In the nook of a huge bay window, a circular breakfast table is the perfect spot for more informal meals, overlooking the gardens.









Bedrooms & bathrooms

Four imposing bedrooms span the first floor of the main house – all plush upholstery, antique furniture and views out over the serenity. The oriental-inspired principal suite is conducive to switching off, with a bamboo four-poster bed, silk floral wallpaper and dusty blue tones. Rugs, lamps and fabrics wrap the space in warmth and comfort, while the wallpapered bathroom brings a touch of indulgence with its deep tub.

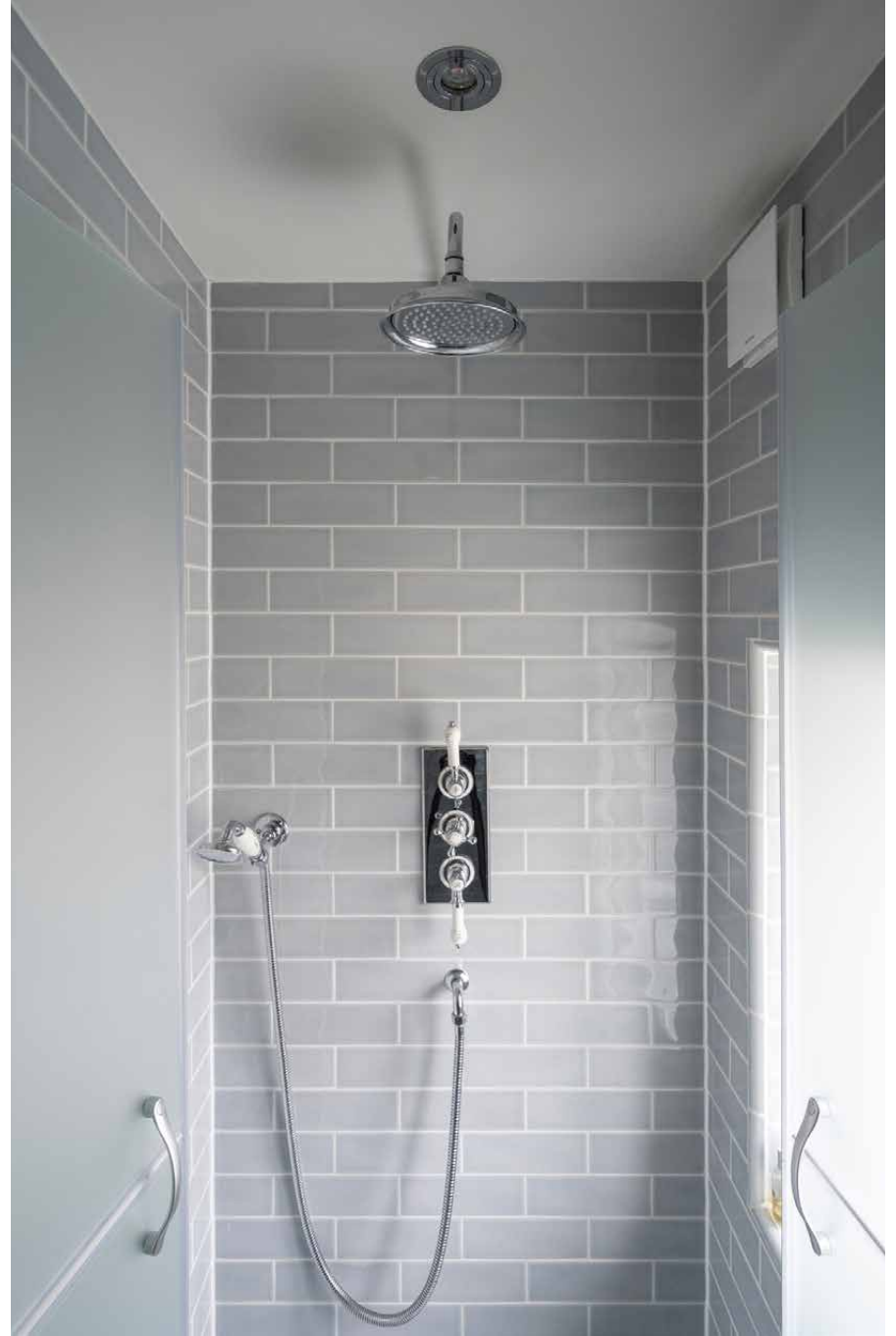
Each room has its own personality and palette: from a double with a grand four-poster and green hues that echo the foliage beyond to a pink-toned twin with sumptuous silk finishes. Two family bathrooms offer a relaxing footnote with bold wallpaper and full-sized bathtubs. The top floor is the domain of older children or extended family members, complete with its own den-come-cinema-room. Three further bedrooms and two bathrooms feature the same exuberant finishes and rural outlooks.













The cottages

Configured for additional friends and family, self-contained Court Cottage and Ford Cottage are arranged around a cobbled Blue Lias stone courtyard, just next to the manor house. With four bedrooms and three bathrooms apiece, they extend the footprint – and the farmhouse charm. Sumptuous interiors by Upstairs Downstairs, playful primary colour schemes and cosy wood burners bring character and comfort. Footprints are considered; both cottages featuring dedicated living spaces, fully equipped kitchens, dining tables and exquisite finishes.

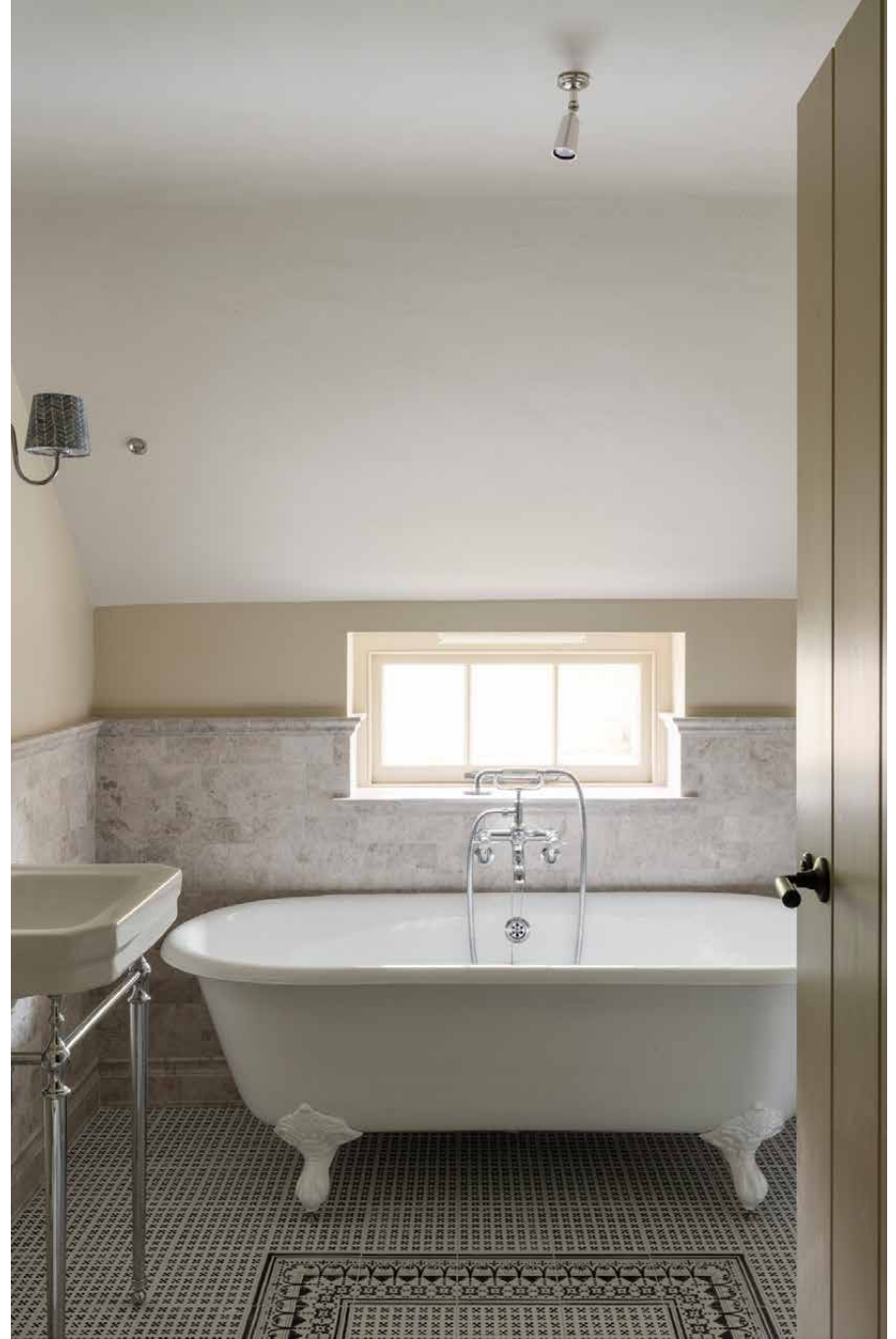












The surroundings

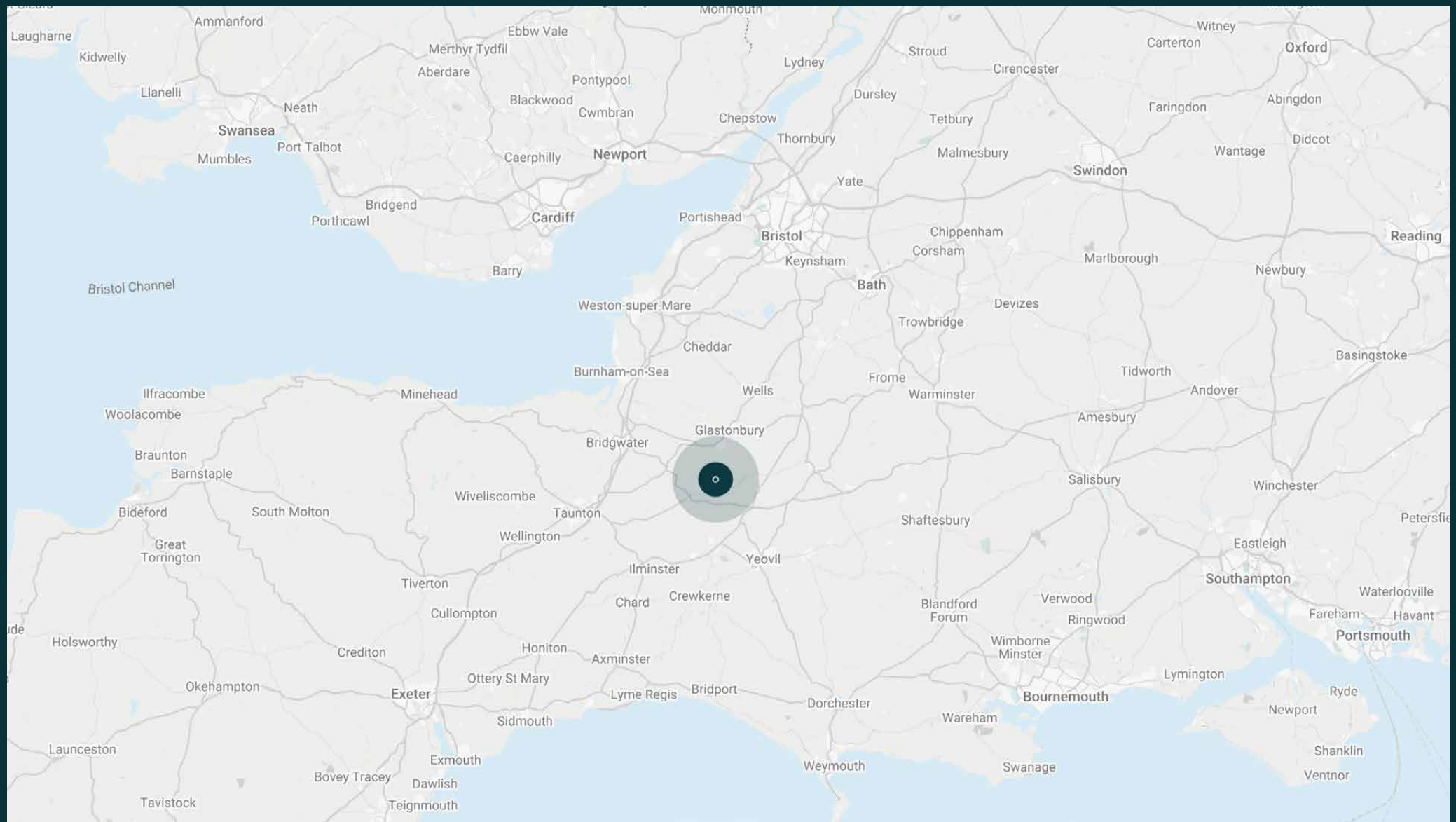
The county of Somerset is on your doorstep here. Follow the hiking trails from the estate to the picturesque town of Somerton, the former capital of Wessex. This is a place of epic history, first mentioned in the Anglo Saxon Chronicle of 773. Make a pitstop at family-run Alfredo's for venetian cicchetti. Brave cold-water swimming at Lulworth Cove, trace the Jurassic coastline, or ramble up the ramparts of Maiden Castle, an expansive Iron Age hillfort dating from the 1st century BC. If you tire of the estate's 35 acres, jump in the car to Exmoor National Park, where some 265 square miles of open moorland and ancient woodland await. Come evening, book a table at Osip in nearby Bruton, a gastronomic destination that's put Somerset on the culinary map.

Glastonbury is just up the road, which is music to the ears of festival goers who want to forego camping. When the city calls, London is only one hour 30 minutes away by train, while the Jurassic Coast and Bath are both a 60 minute drive in either direction.

Travel times (by car):

- Castle Cary - 10mins (direct 1.5hr trains to London)
- Glastonbury - 15mins
- Jurassic Coast - 25mins
- Bath - 45mins





Property features

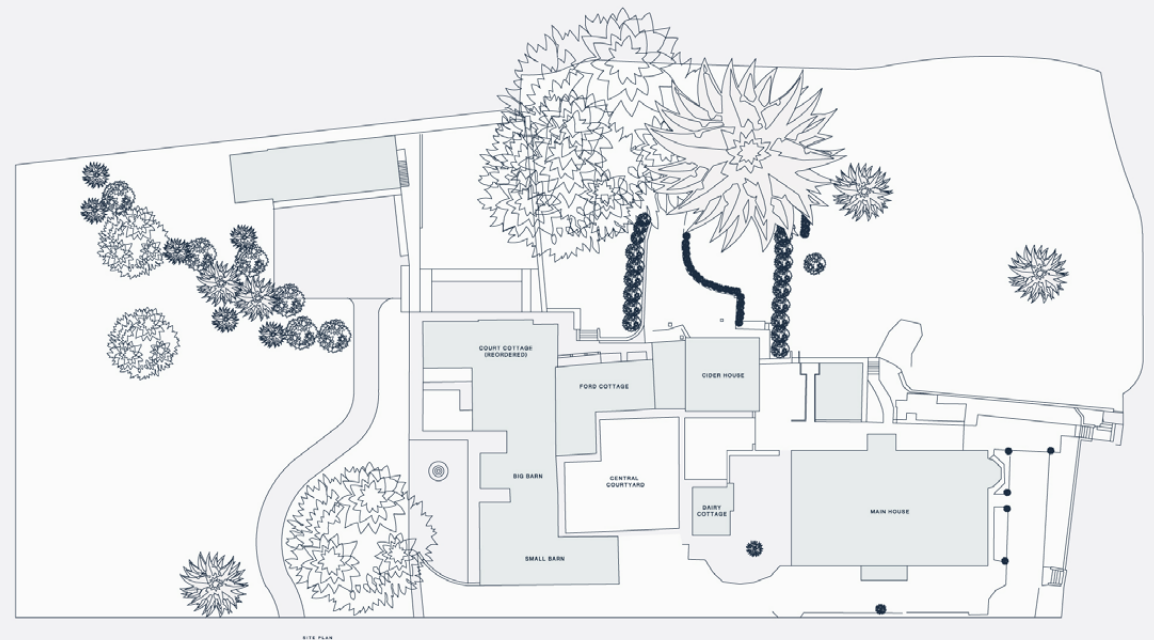
- 35-acre rural estate
- 18th century manor house and two guest cottages
- Dedicated spa, sauna and wellness barn
- Heated, walled swimming pool
- Three stately reception rooms
- Formal dining room, plus a dining barn
- Farmhouse kitchen and separate professional kitchen
- Seven bedrooms with period features
- Five bathrooms with bathtubs
- Two self-contained cottages, each with four bedrooms
- Option to rent an additional annex for children/ staff

What's included?

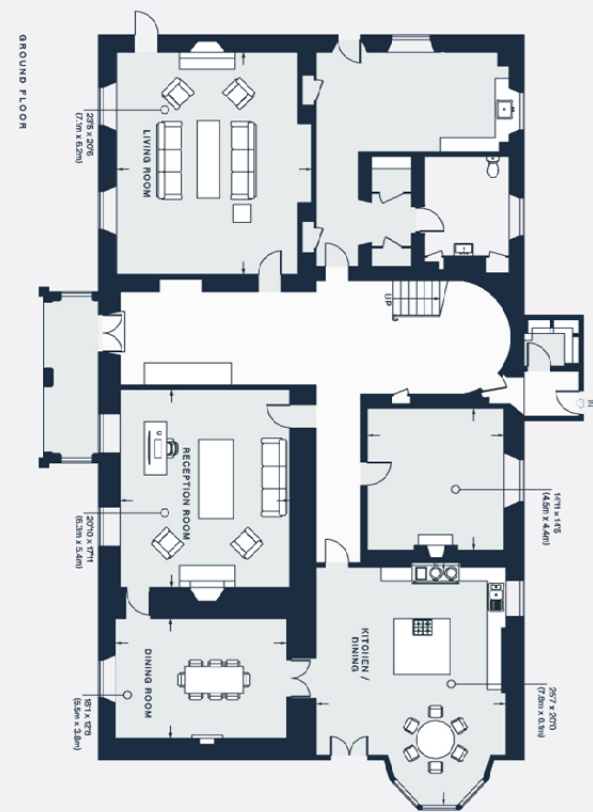
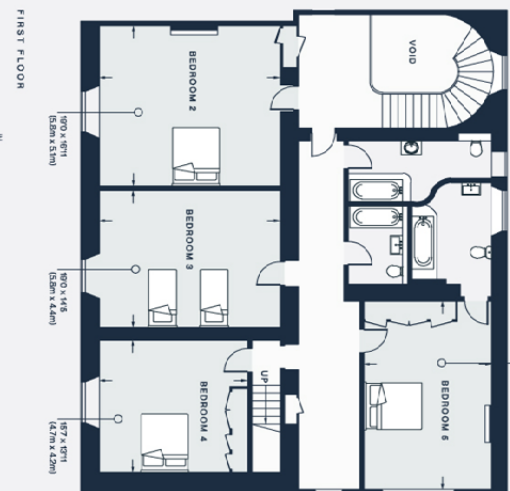
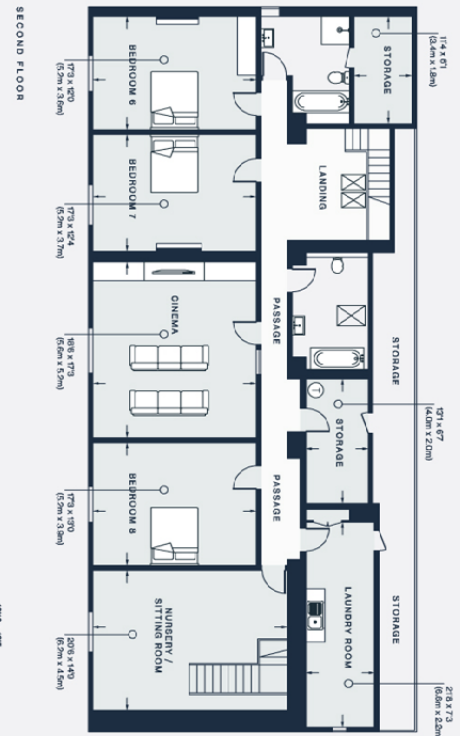
Full-time housekeepers and private chef

Two guest cottages (plus option to rent an additional annex)

Customisable wellness packages and activities for guests

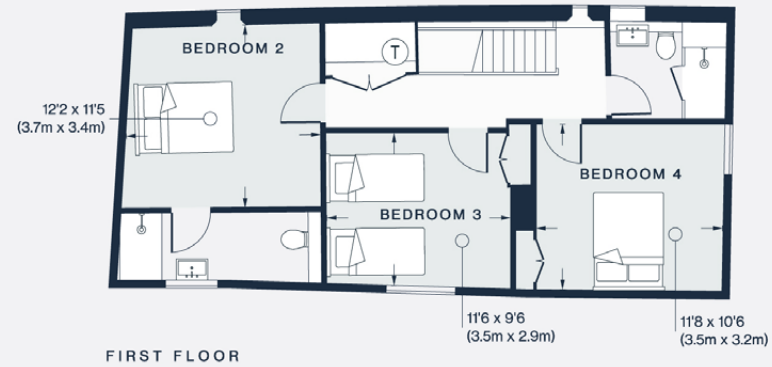


Main House



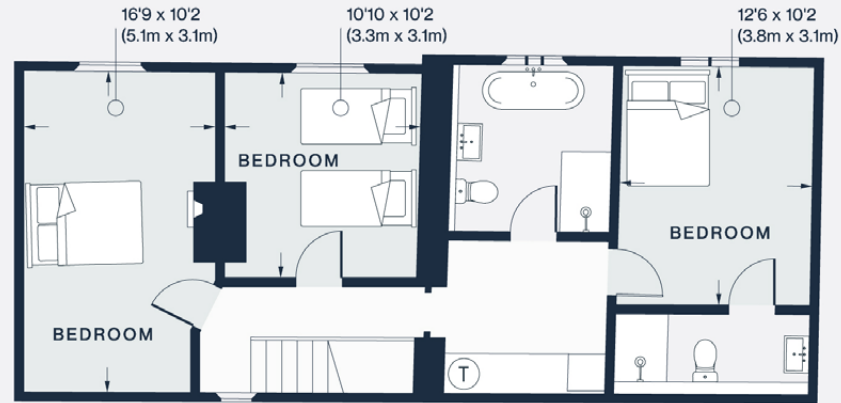
Approx. Gross Internal Area = 7,385 sq ft / 686.1 sq m

Ford Cottage

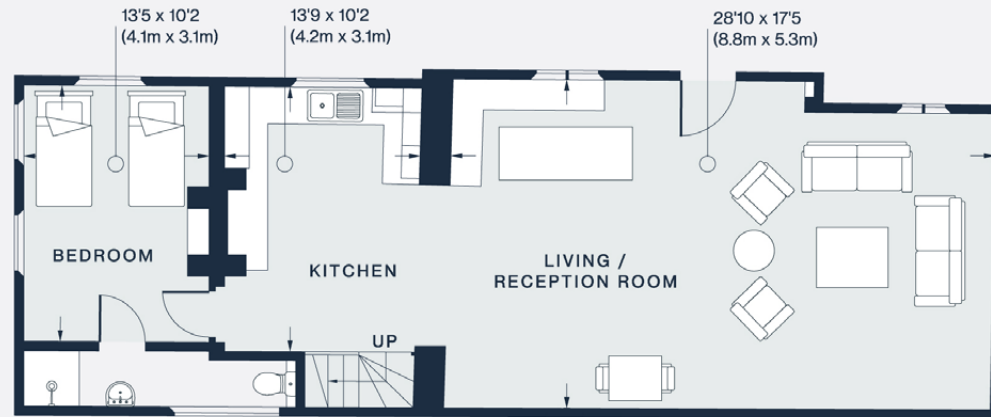


Approx. Gross Internal Area = 1,467 sq ft / 136.3 sq m

Court Cottage



FIRST FLOOR



GROUND FLOOR

Approx. Gross Internal Area = 1,592 sq ft / 147.9 sq m

Guest & concierge services

Tennis coach or yoga instructor. Tables at renowned dining institutions, tickets to sporting or music events, and tours of the surrounding countryside: we're here to ensure stays are nothing short of exceptional. Working alongside our carefully selected partners, we put tastemakers and health and wellbeing experts at our guests' fingertips.

Our statement spaces are just the starting point – to ensure everyone feels at home, our rates include:

-
- Housekeeping
 - Flexible check-in/out
 - Luxury linens and toiletries
 - Legal compliance on all our homes
 - A personal welcome and arrival essentials
 - Unlimited access to guest services and tailored experiences
 - Professional inspection before and after every stay
 - Complete discretion





Please get in touch if you have any questions
or require any further information.

hello@domusstay.com

+44 (0)20 8168 8880

The property particulars are a guide not statements. Descriptions, photographs, and plans are for guidance only. The Property is offered "subject to contract and references". No warranties, representations, License or Tenancy is given by Domus Stay. Our full disclaimer together with trading names and our Privacy Policy is shown on our website

© Domus Stay 2025. All rights reserved.

