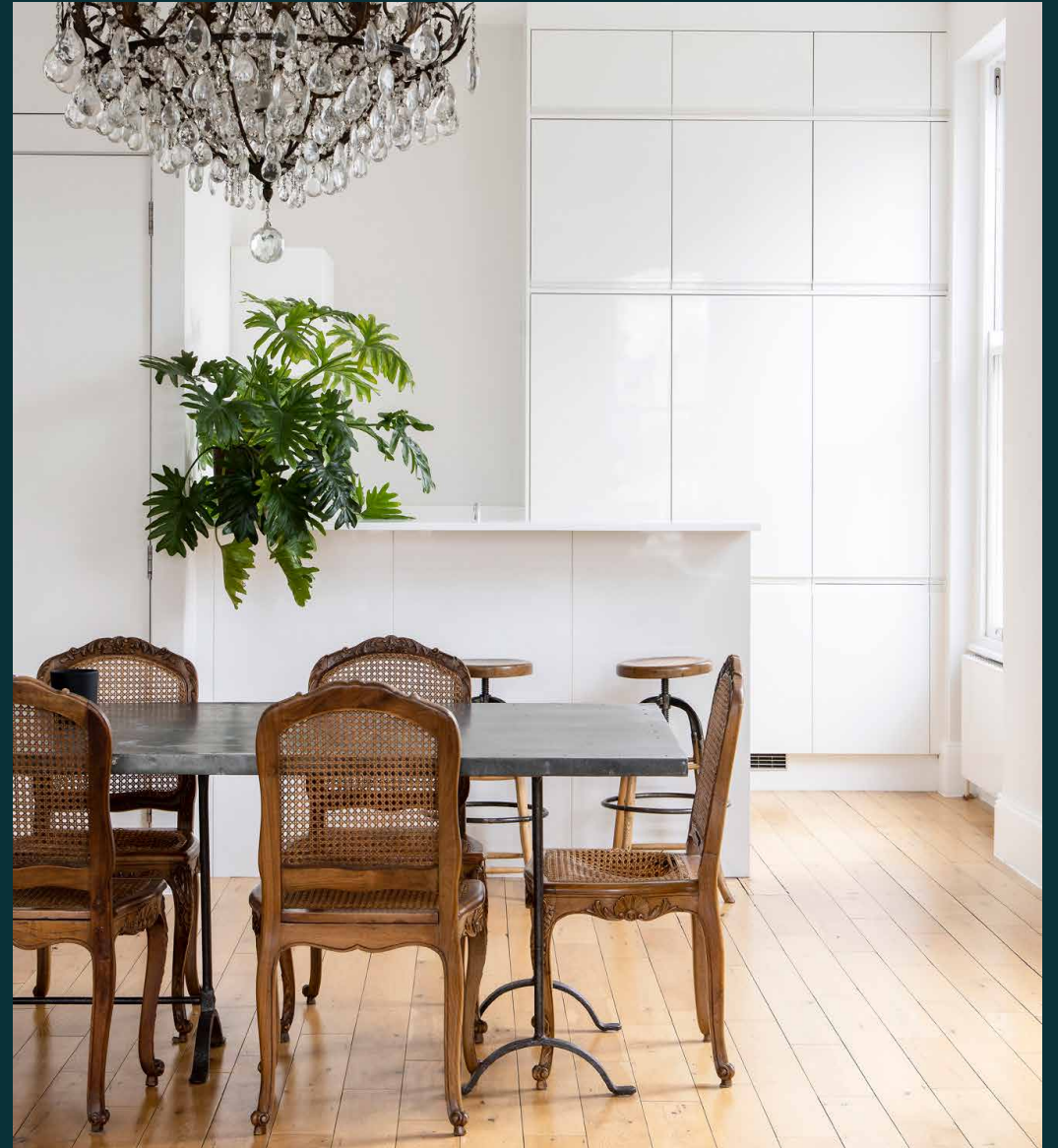


domus
stay.

Westbourne Grove II

NOTTING HILL

2 Bedrooms, 2 Bathrooms
For 4 guests





Lateral living meets considered design at this two-bedroom apartment to rent on one of Notting Hill's most coveted streets.

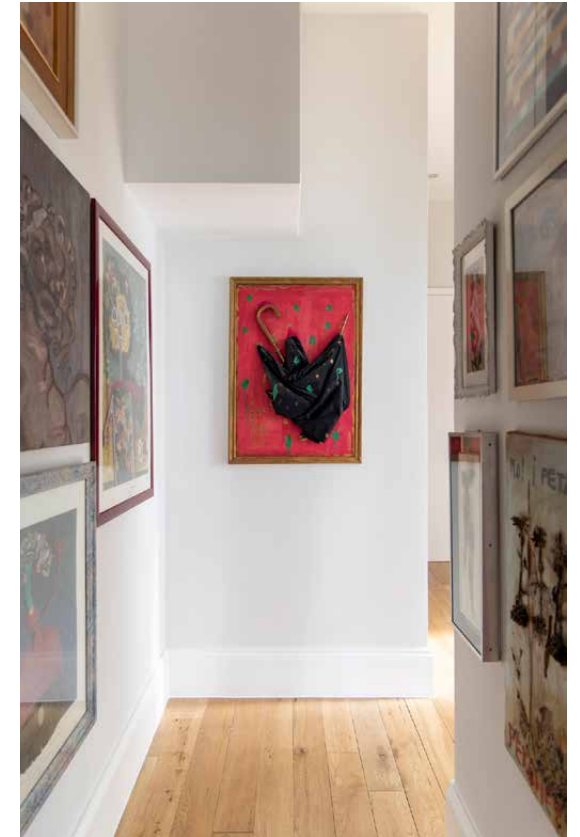
Set on the first floor of an end-of-terrace building, this two-bedroom apartment brings calm domesticity to a stylish city backdrop. A multitude of windows ensures a steady stream of sunlight, accentuating a considered character and generous period proportions.



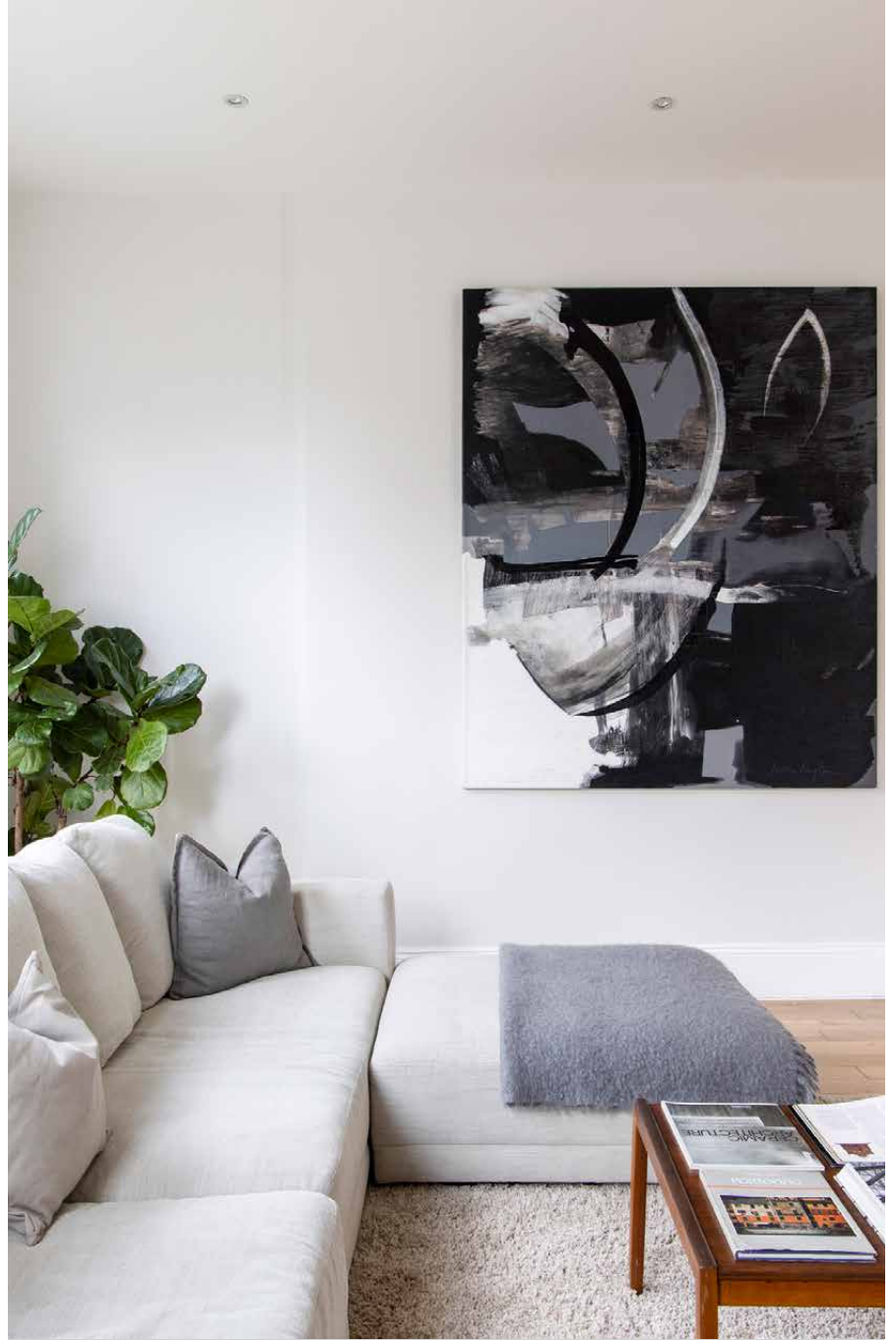
The living spaces

The apartment's lateral layout prioritises flow, with the kitchen, dining and sitting areas connected in a single, generous sweep. Voluminous proportions impress at once; an opulent chandelier accentuates the ceiling height, while a wash of white hues amps up the brightness. The kitchen sits neatly tucked away – a crisp corner to prep with clean-lined cabinetry and matching countertops.

A feature floor-to-ceiling bookcase defines the neighbouring lounge – its plentiful array of paperbacks organised in a rainbow of shades. An integrated desk is primed for home working, while an inviting L-shaped sofa calls for kicking back when the evening draws in.







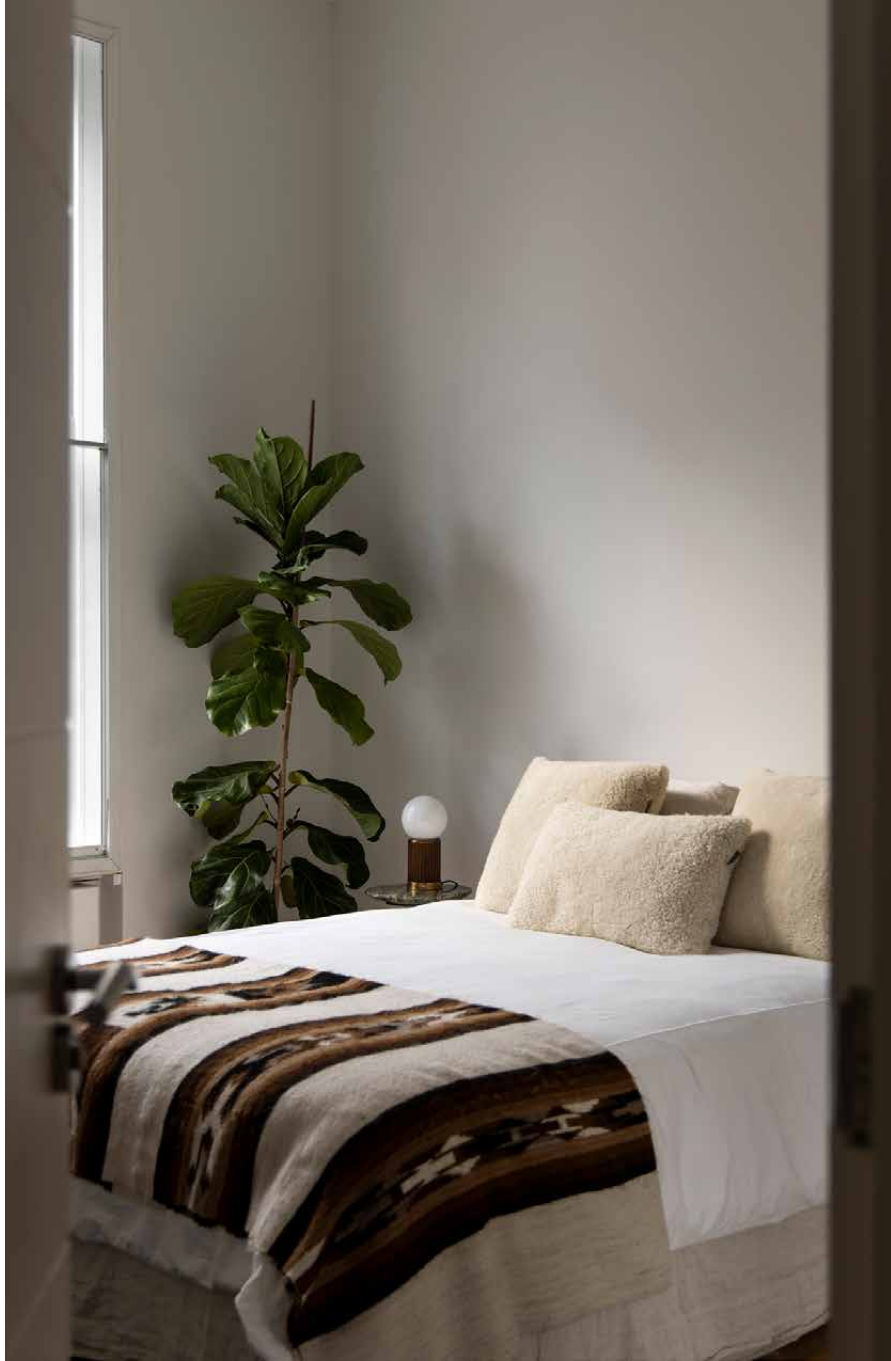


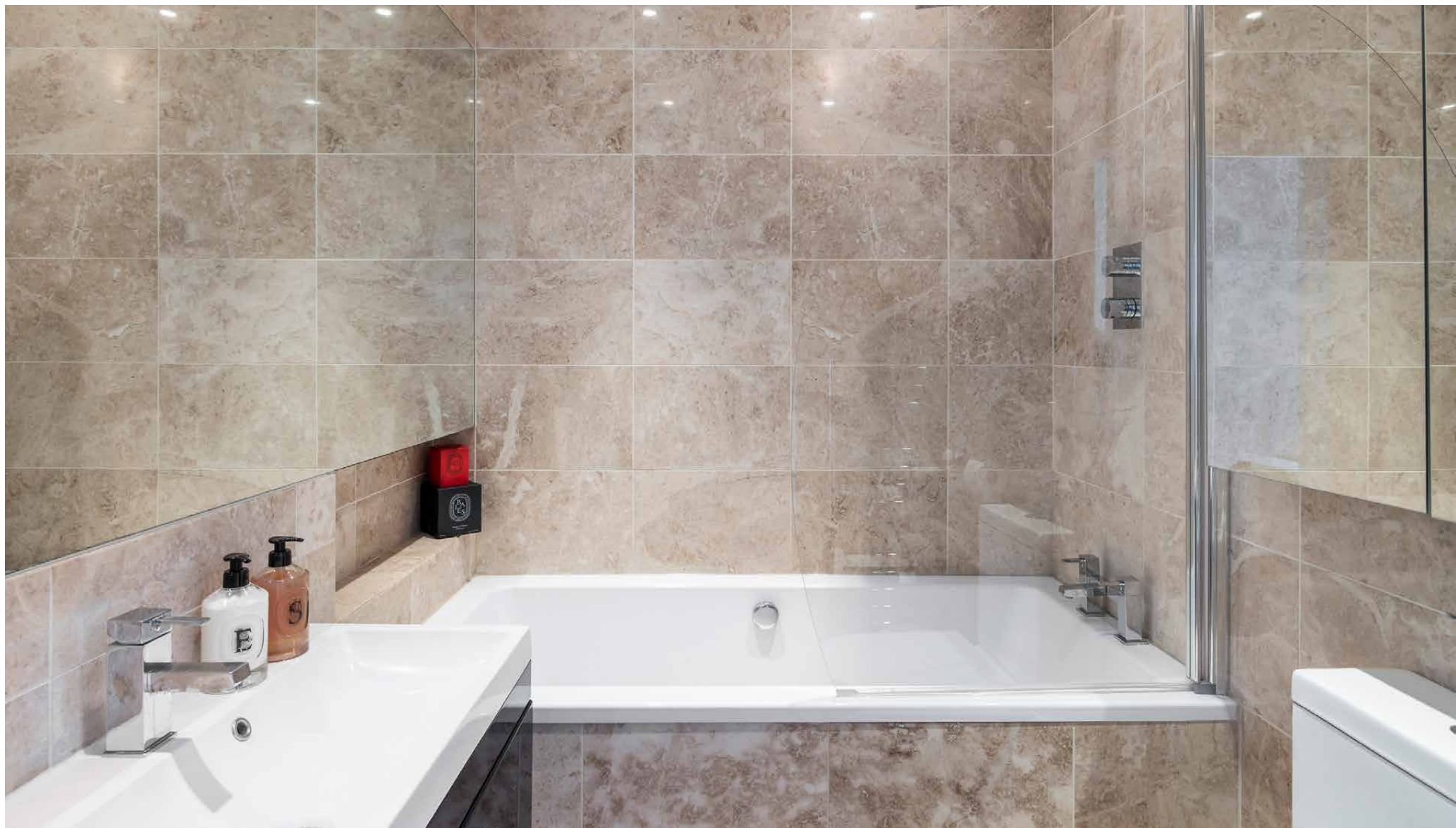


Bedrooms & bathrooms

The principal suite invites restful nights: floor-to-ceiling mirrored wardrobes amplify light and the sense of space, while an en suite in beige stone features a freestanding bathtub and overhead rainfall shower. The guest bedroom continues the aesthetic, served by a shower room.





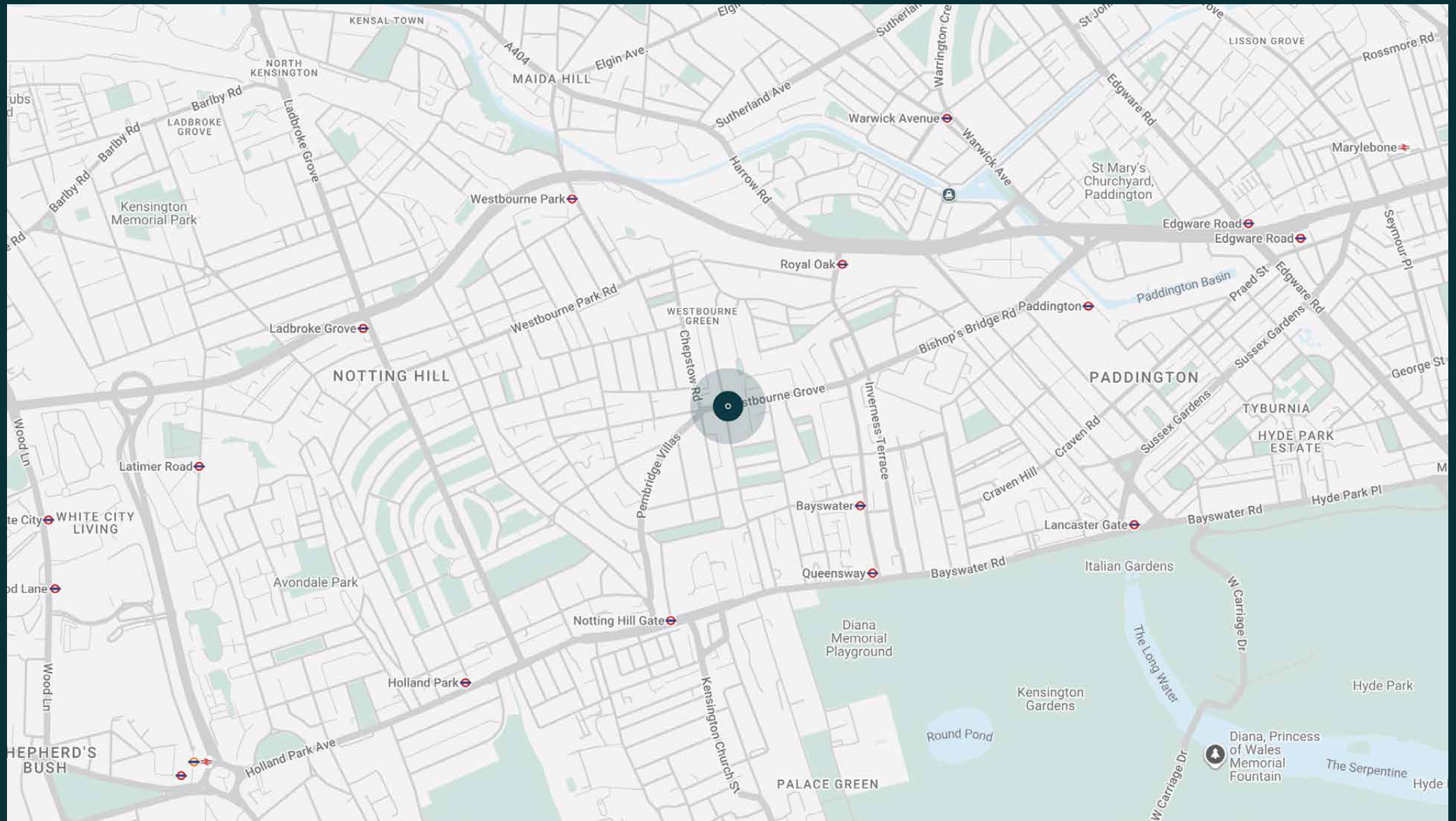


The neighbourhood

Embedded in the vibrant fabric of Westbourne Grove, this apartment is a stone's throw away from some of the best eateries and shops in the area.

Enjoy the innovation of a plant-based brunch at Farmacy, before hitting a spin-class at Psyche. Browse an array of boutiques, from Parisian-designed Sézane to Caudalie for indulgent treatments. Spend a night at the coveted restaurant, Gold. Notting Hill Gate is only a ten-minute walk away, giving easy access into central London and beyond.





Property features

- Open-plan kitchen, dining and reception room
- Library wall with built-in desk
- Principal bedroom suite with floor-to-ceiling wardrobes
- Guest bedroom
- Shower room

Approx. 1,139 sq ft / 105.8 sq m



Guest & concierge services

Our concierge team are here to help guests settle in, seamlessly. Centre court tickets to Wimbledon, Premier League seats with the best views, Savile Row tailors on standby, or a private chef to cater to individual tastes – we aim to elevate every stay.

From the moment of booking with us, each guest has a single point of contact to finesse the details. Our statement spaces are just the starting point – to ensure everyone feels at home, our rates include:

-
- Weekly housekeeping
 - Flexible check-in/out
 - Luxury linens and Bamford toiletries
 - Legal compliance on all our homes
 - A personal welcome and arrival essentials
 - Unlimited access to guest services and tailored experiences
 - Professional inventory inspection before and after every stay
 - Access to a curated portfolio of sole agency properties





Please get in touch if you have any questions
or require any further information.

hello@domusstay.com

+44 (0)20 8168 8880

The property particulars are a guide not statements. Descriptions, photographs, and plans are for guidance only. The Property is offered "subject to contract and references". No warranties, representations, License or Tenancy is given by Domus Stay. Our full disclaimer together with trading names and our Privacy Policy is shown on our website

© Domus Stay 2025. All rights reserved.

