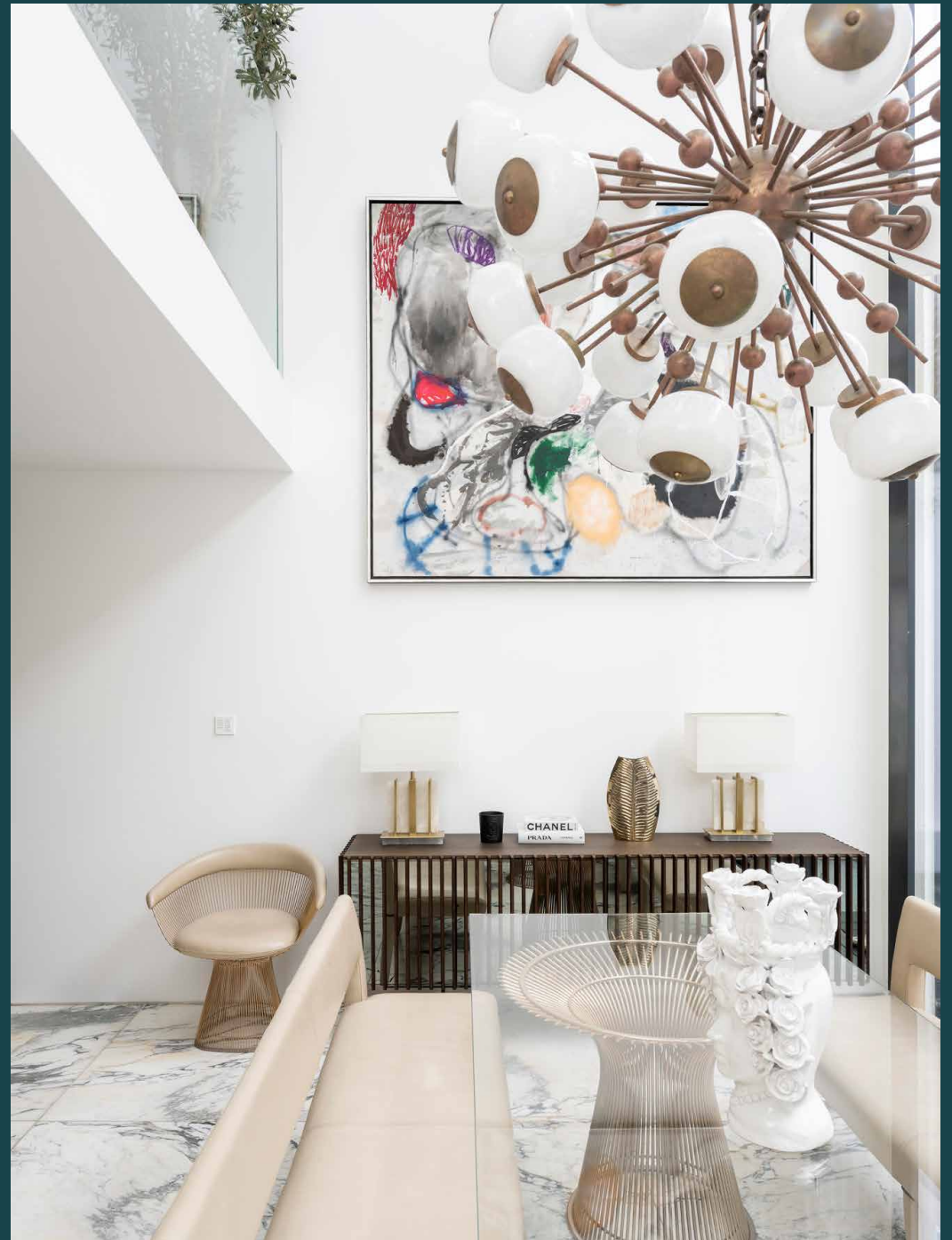


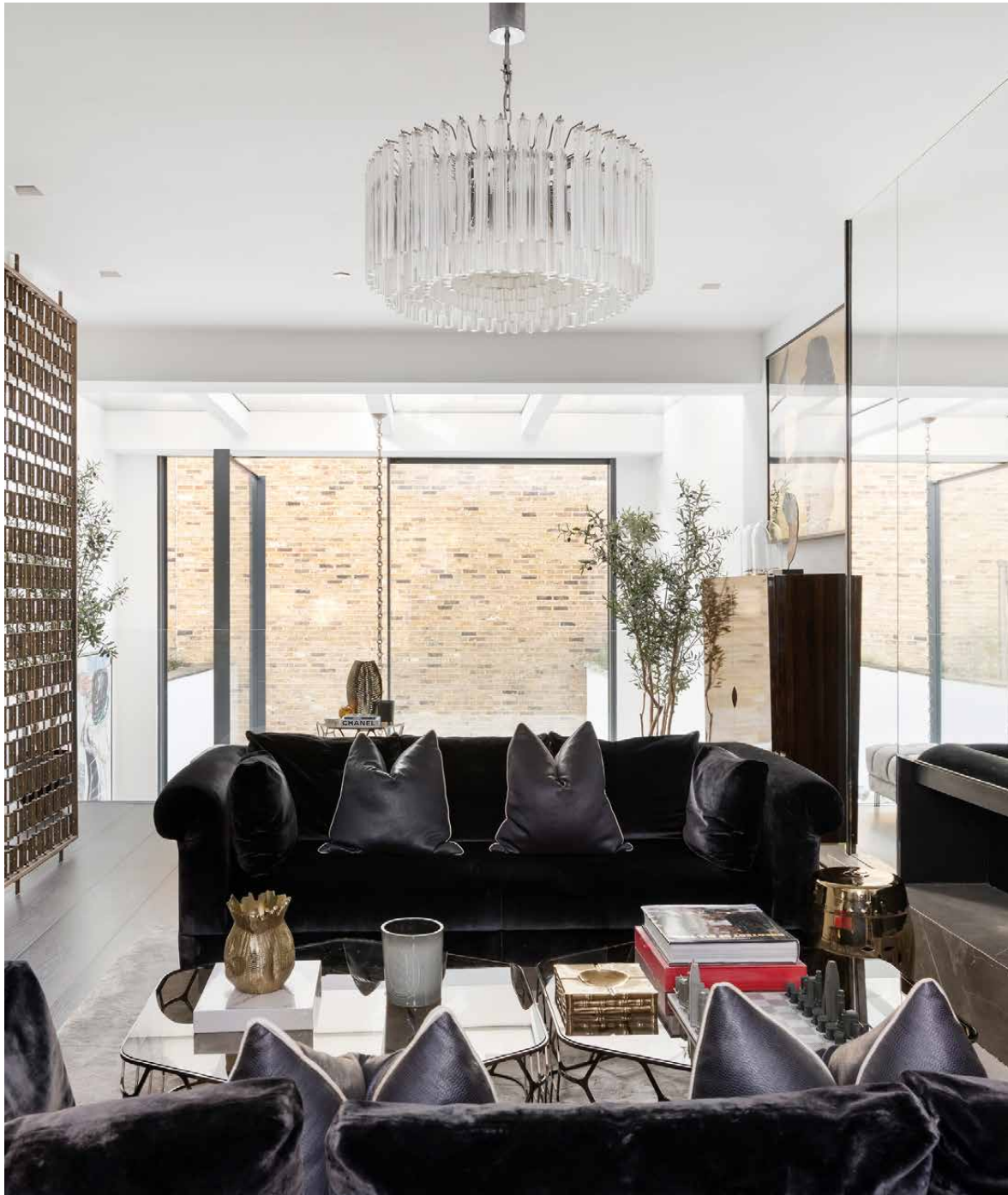
domus
stay.

Westbourne Grove

Notting Hill W11

6 Bedrooms, 4 Bathrooms
For 12 guests





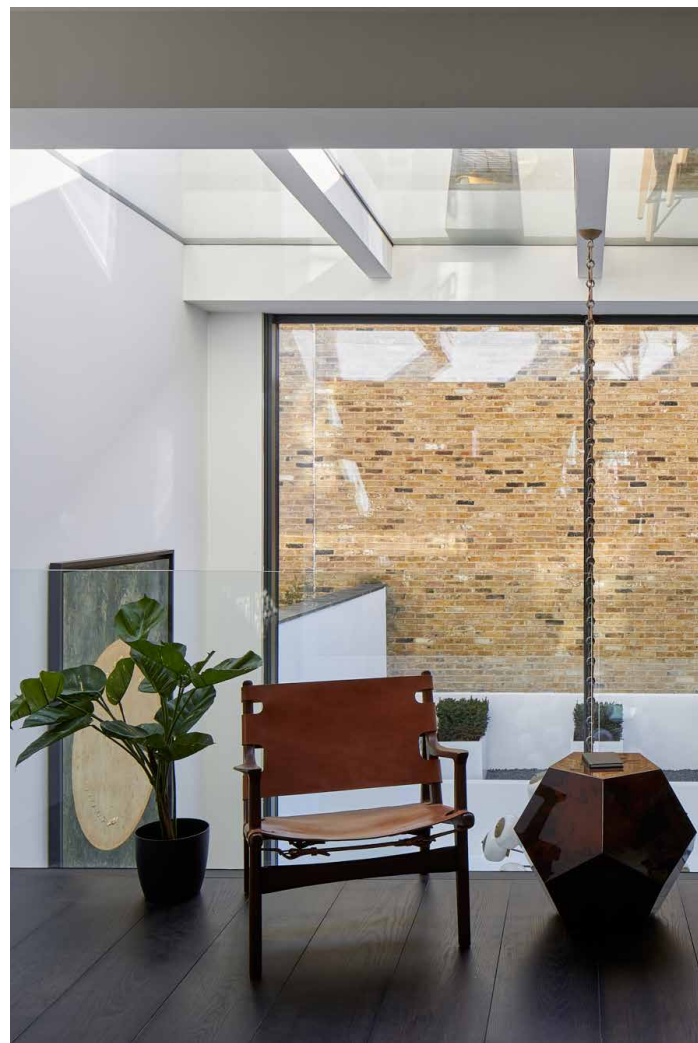
A standout exterior with flawless interiors.
Six stories of exquisite design on one of
Notting Hill's most stylish streets.

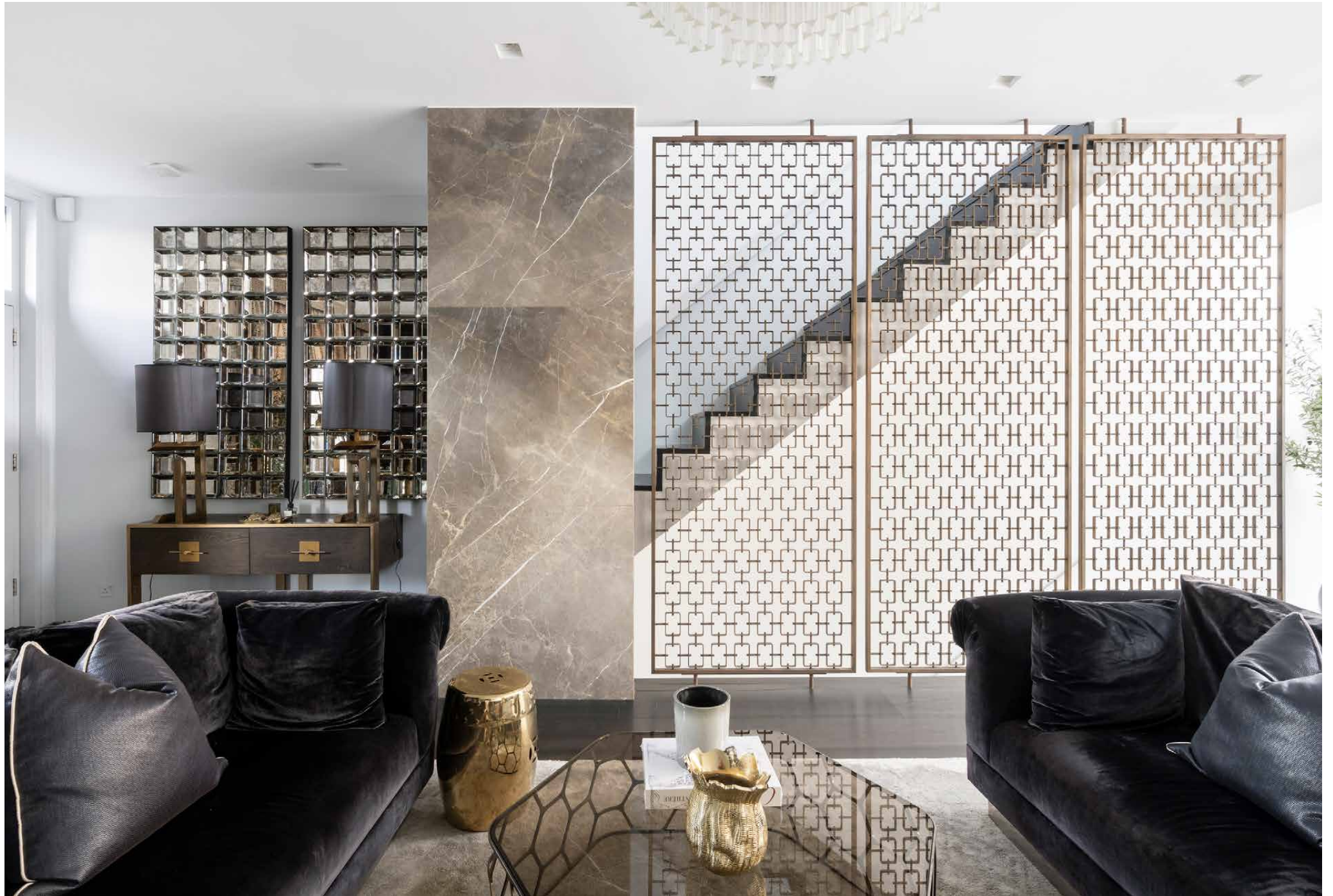
A charcoal-black façade sits boldly amongst Westbourne Grove's rows of pastel-toned townhouses. Inside, the heritage grandeur of this six-bedroom home has been redrawn with awe-inspiring contemporary imagination.

The ground-floor reception room sets a tone of stylish elegance, with dark wood floors, marble accents and a gilded metal screen – aesthetic sentiments employed throughout the home. The eye is drawn to an immense double-height void connecting this room to the open-plan kitchen and dining area below. The full-height glazing and expansive roof light is accentuated with a sculptural chandelier that spans the vertical drop.

The lower-ground floor is tailor-made for entertaining. The kitchen, finished in lustrous marble, features chef-grade Gaggenau and Miele appliances – plus wine storage with stylish glass and bronze framing. Beyond the dining space, the voluminous glass panels slide open to the garden. A towering wall of blonde brick and clean-line whitewashed seating paints an urban al fresco scene.

Family life continues on the basement level with a cosy television space. Next door, a showpiece of luxury home design is realised with a marble-clad swimming pool. This floor also hosts a gym, double bedroom and shower room, organised around an internal courtyard.





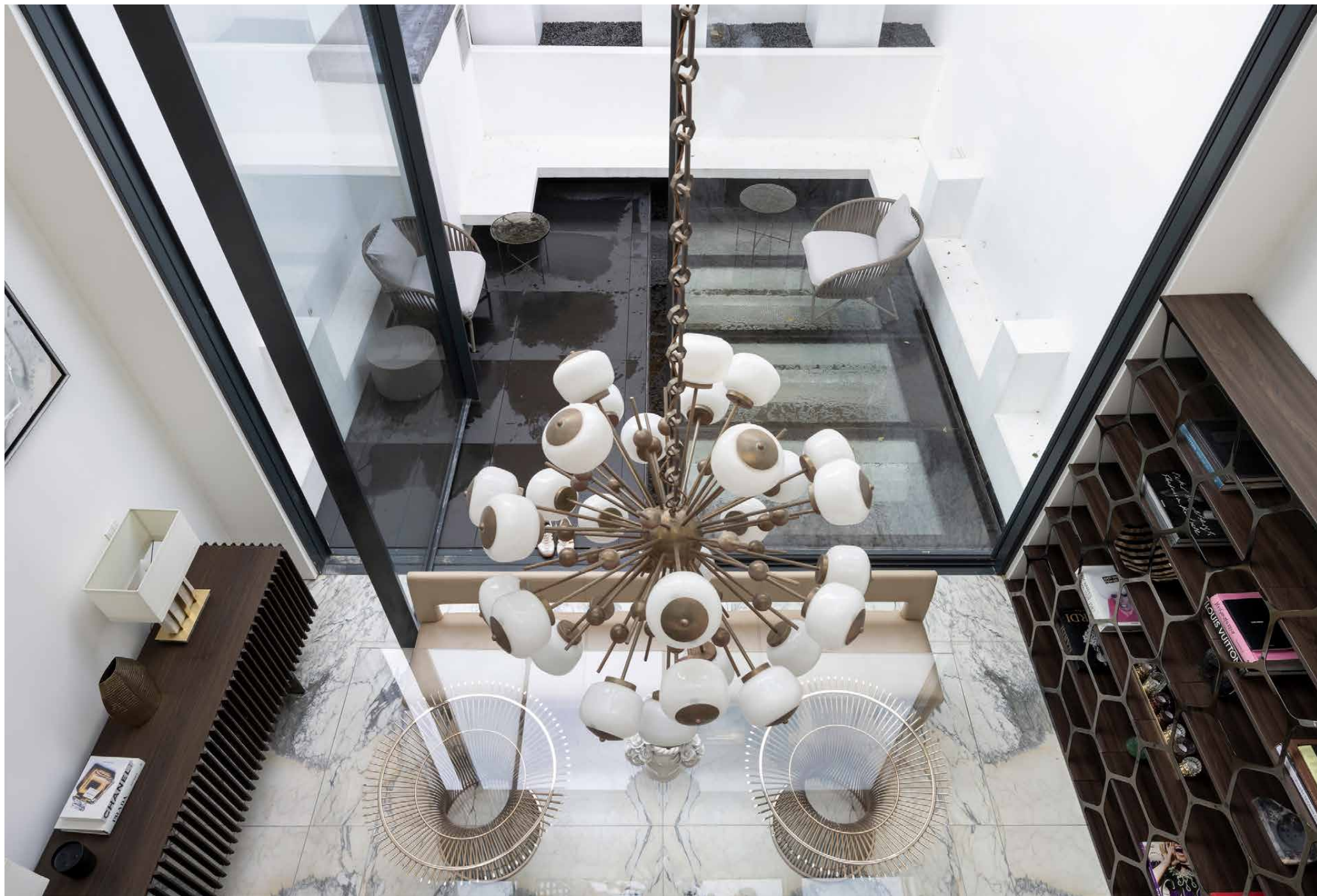
“

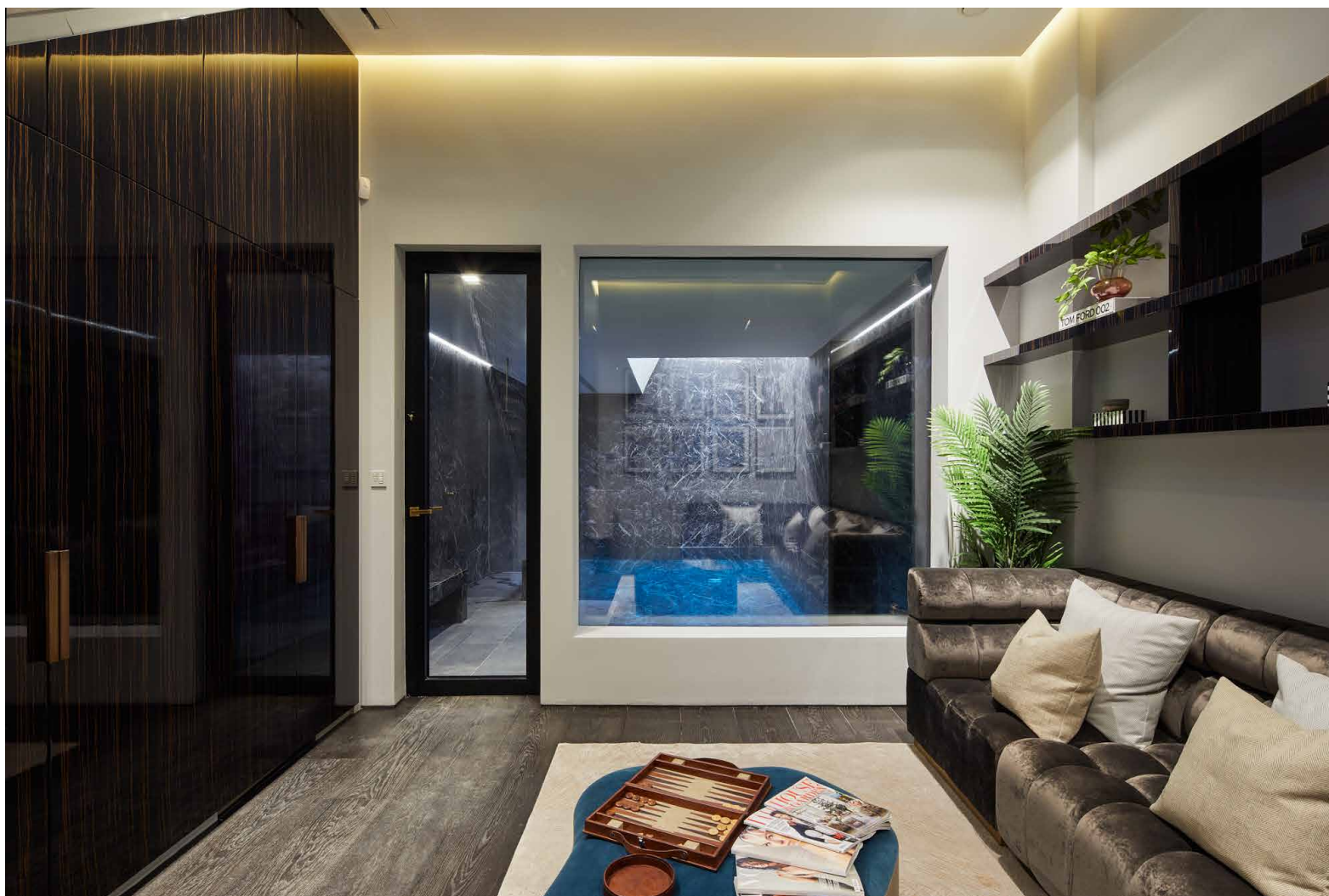
The kitchen, finished in lustrous marble, features chef-grade Gaggenau and Miele appliances - plus wine storage with stylish glass and bronze framing.





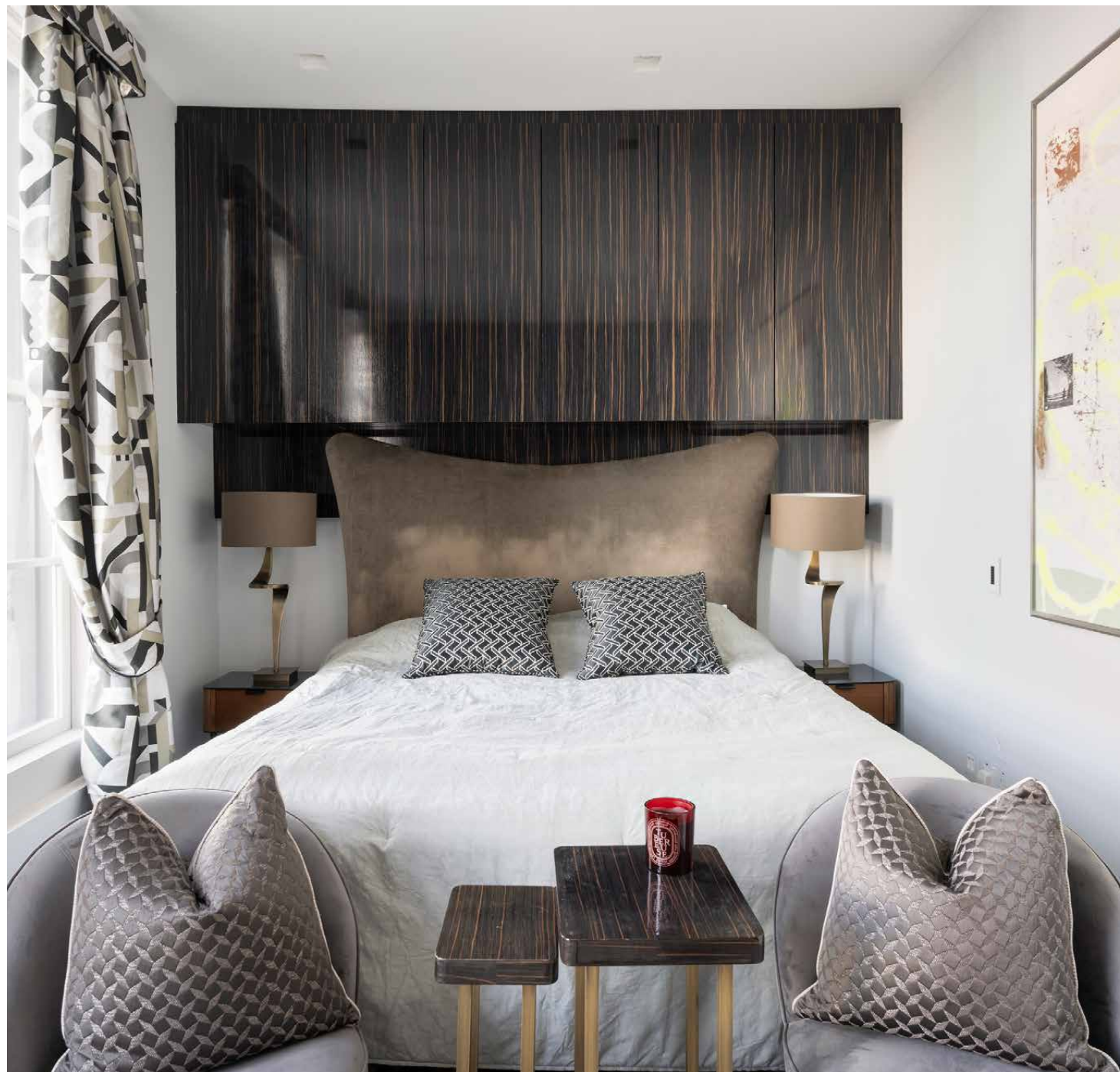






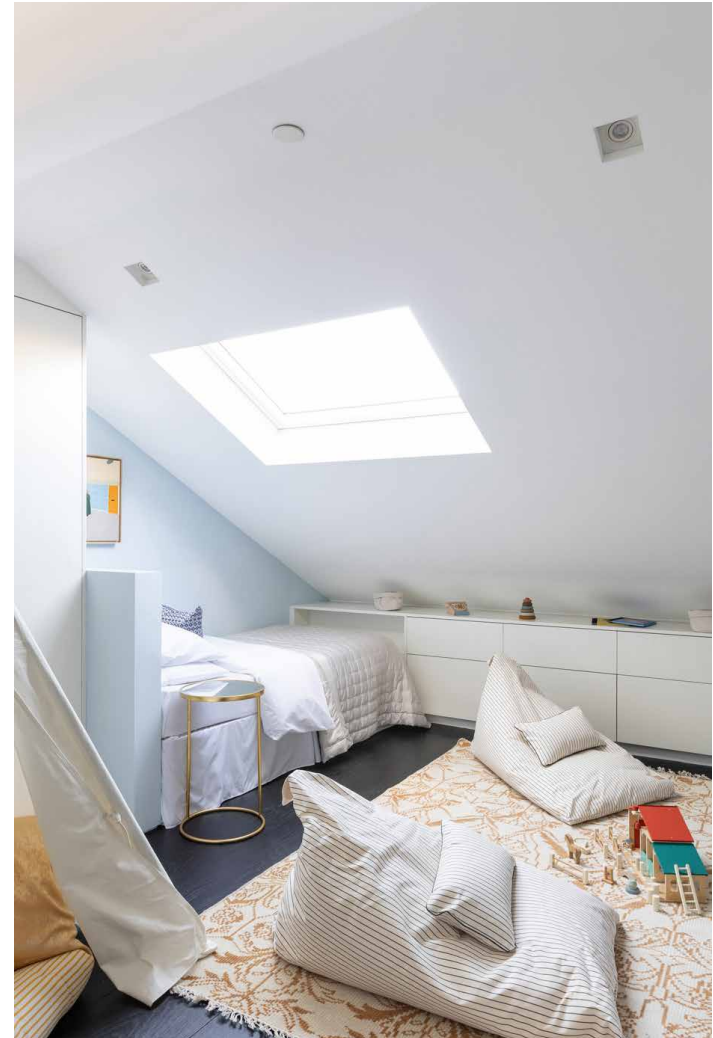


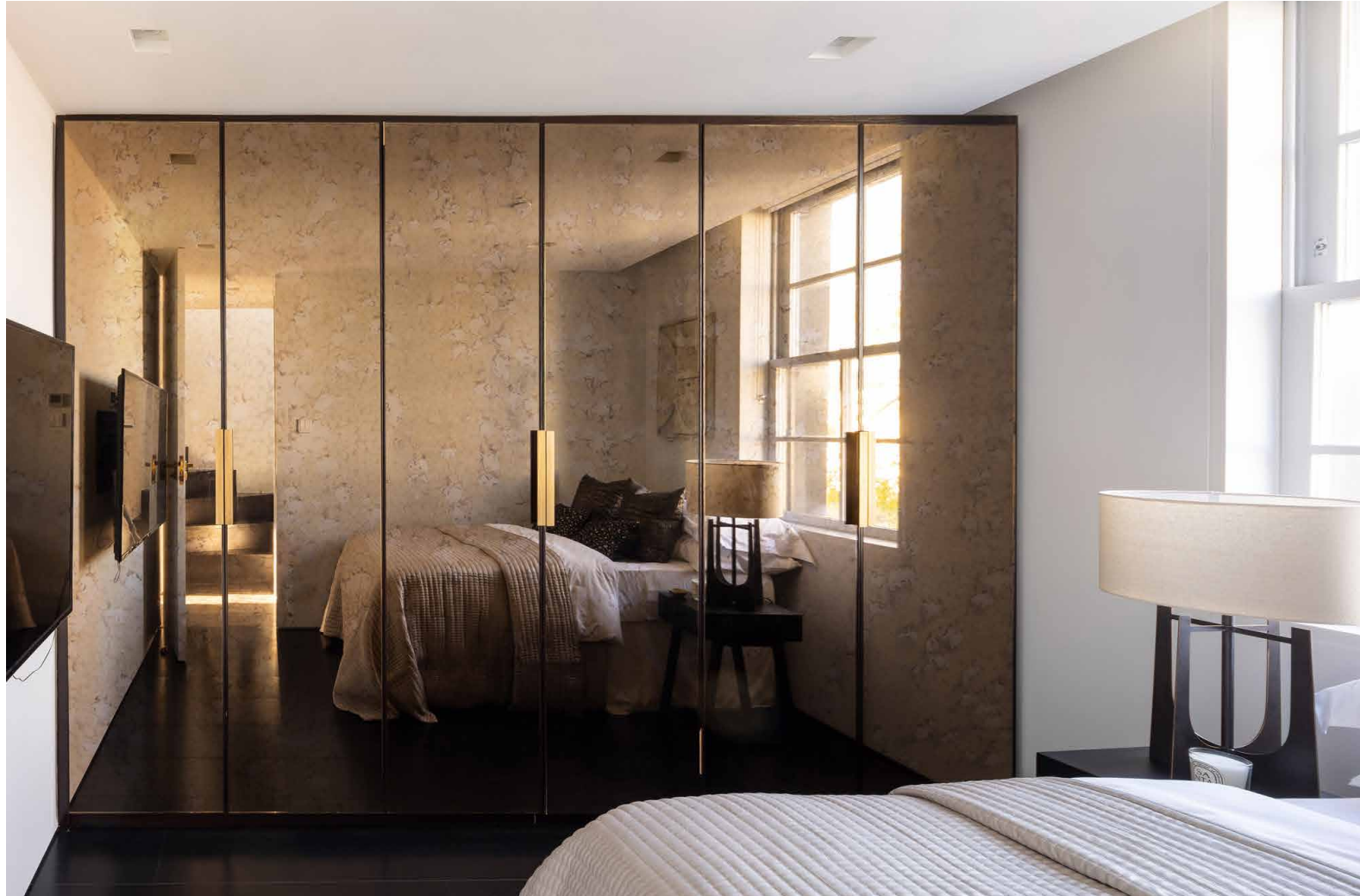
The sumptuous principal bedroom suite occupies the entire first floor, introduced through a corridor of velvet sage-green paneled wardrobes. Modish finishes span the plush grey carpets to the bold marble bathroom, complete with a dual vanity and oversized rainfall shower. From here, there's direct access to the suntrap roof terrace. Spread across the lower-ground, second and third floors are four guest bedrooms and two bathrooms – continuing the home's flawless craftsmanship.











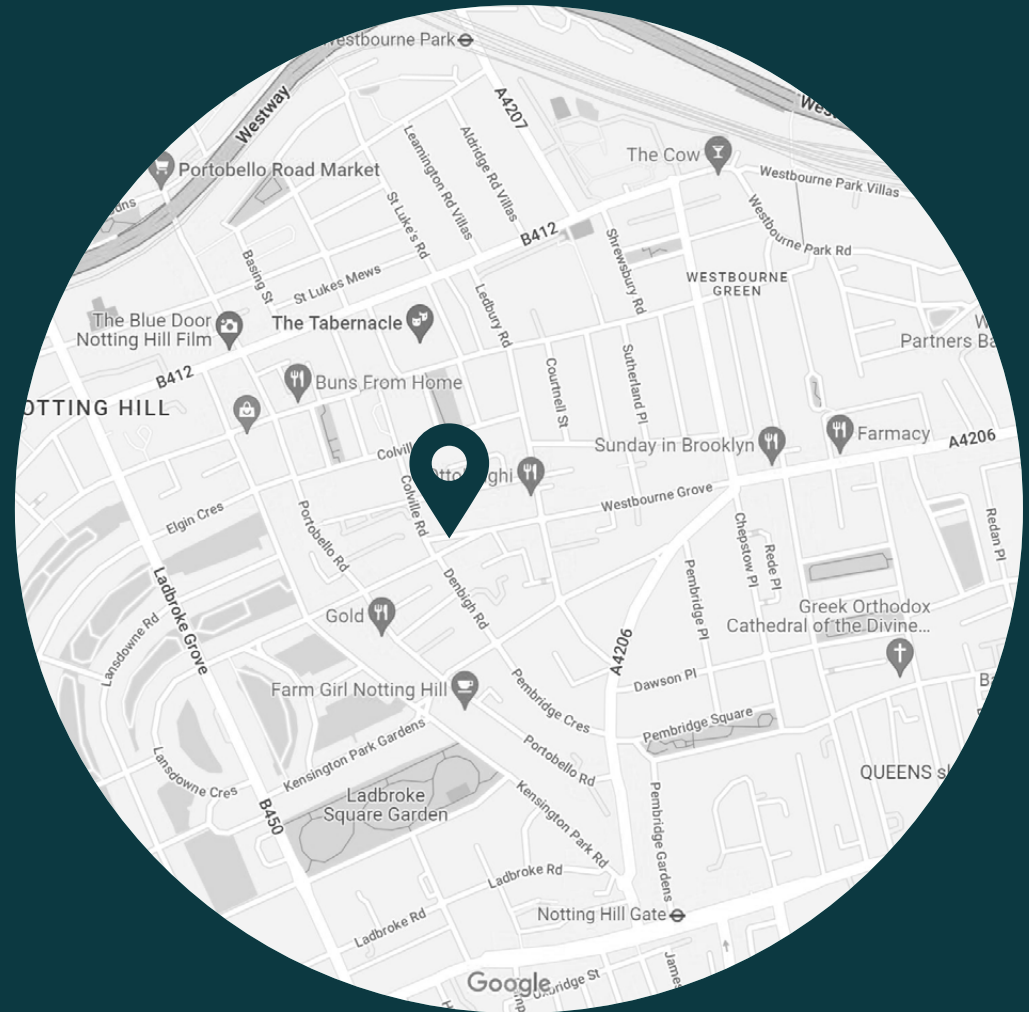




LOCATION

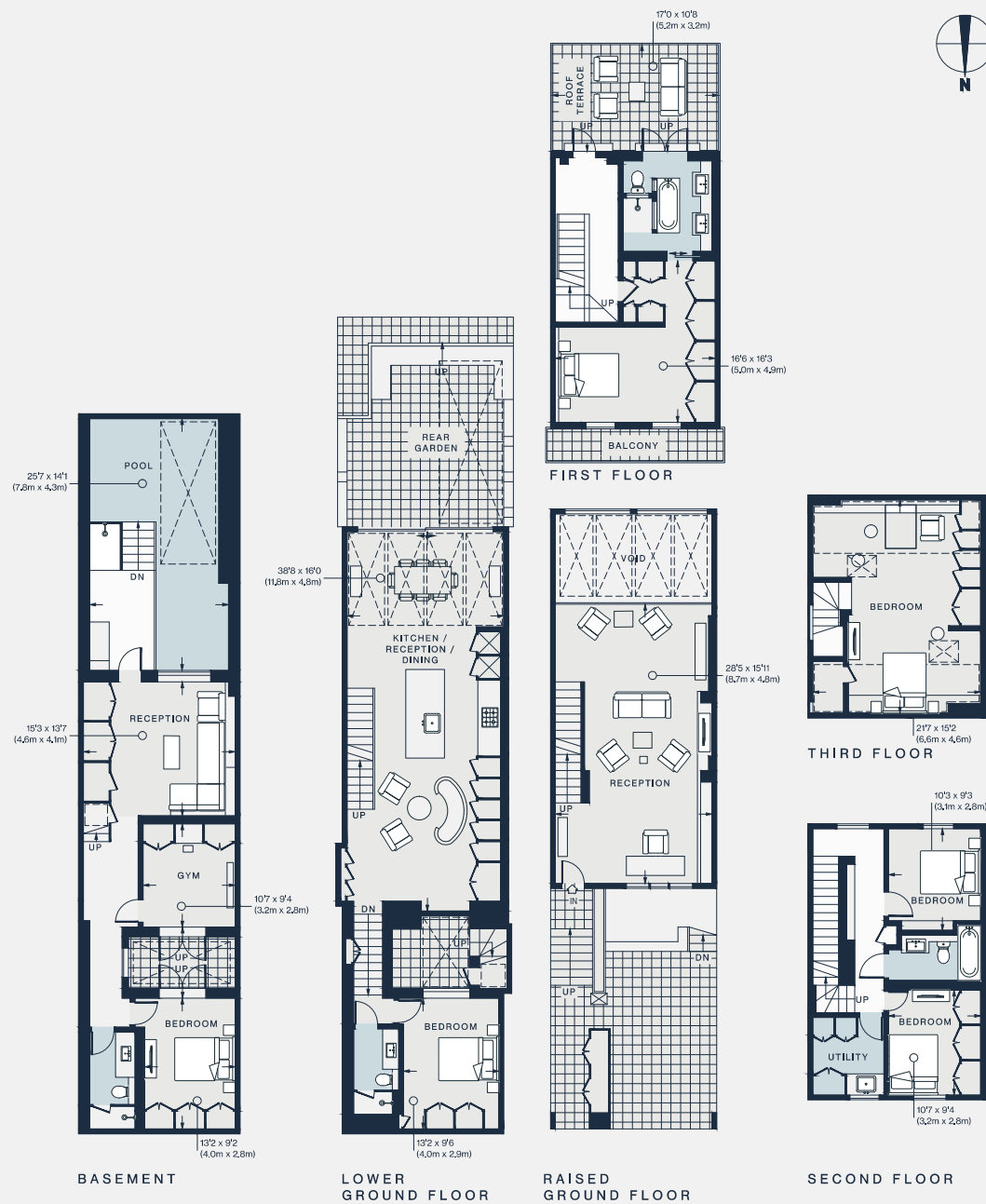
Westbourne Grove is the vibrant artery that feeds Notting Hill, with some of its most-favoured haunts right on your doorstep.

Coveted boutiques such as Paolita, Reformation and Sézane are interspersed between refreshment stops – Granger & Co., Bodyism and Ottolenghi to name but a few. Daylesford Organic Farm Shop and Planet Organic are conveniently located for grocery essentials. The expansive lawns of Hyde Park are a short walk away, with the Serpentine Lido poised for early-morning swims. Or head up Portobello Road for a film at the Electric Cinema, followed by dinner at Gold.



PROPERTY HIGHLIGHTS

- Formal reception room
- Open-plan kitchen and dining room
- Family room
- Principal bedroom suite
- Five further bedrooms
- Three further bathrooms
- Swimming pool
- Roof terrace
- Gym
- Utility room
- Off-street parking
- Royal Borough of Kensington & Chelsea



Approx. Gross Internal Area = 3,310 sq ft / 307.5 sq m
(Excluding Void / Reduced Headroom)

Floor plans are for illustrative purposes only and not to scale. Compliant with RICS code of measuring practice.



Please don't hesitate to get in touch if you have any questions or require any further information.

hello@domusstay.com

+44 (0)20 8168 8880

Domus Stay provides the perfect combination of property, place and personal service for the world's most remarkable people. If you have any questions, or if we can help in any way, please contact us on the above number. Be it about a property you have, a property you want, dates to check or any special requirements you may need, we'd love a chat.

