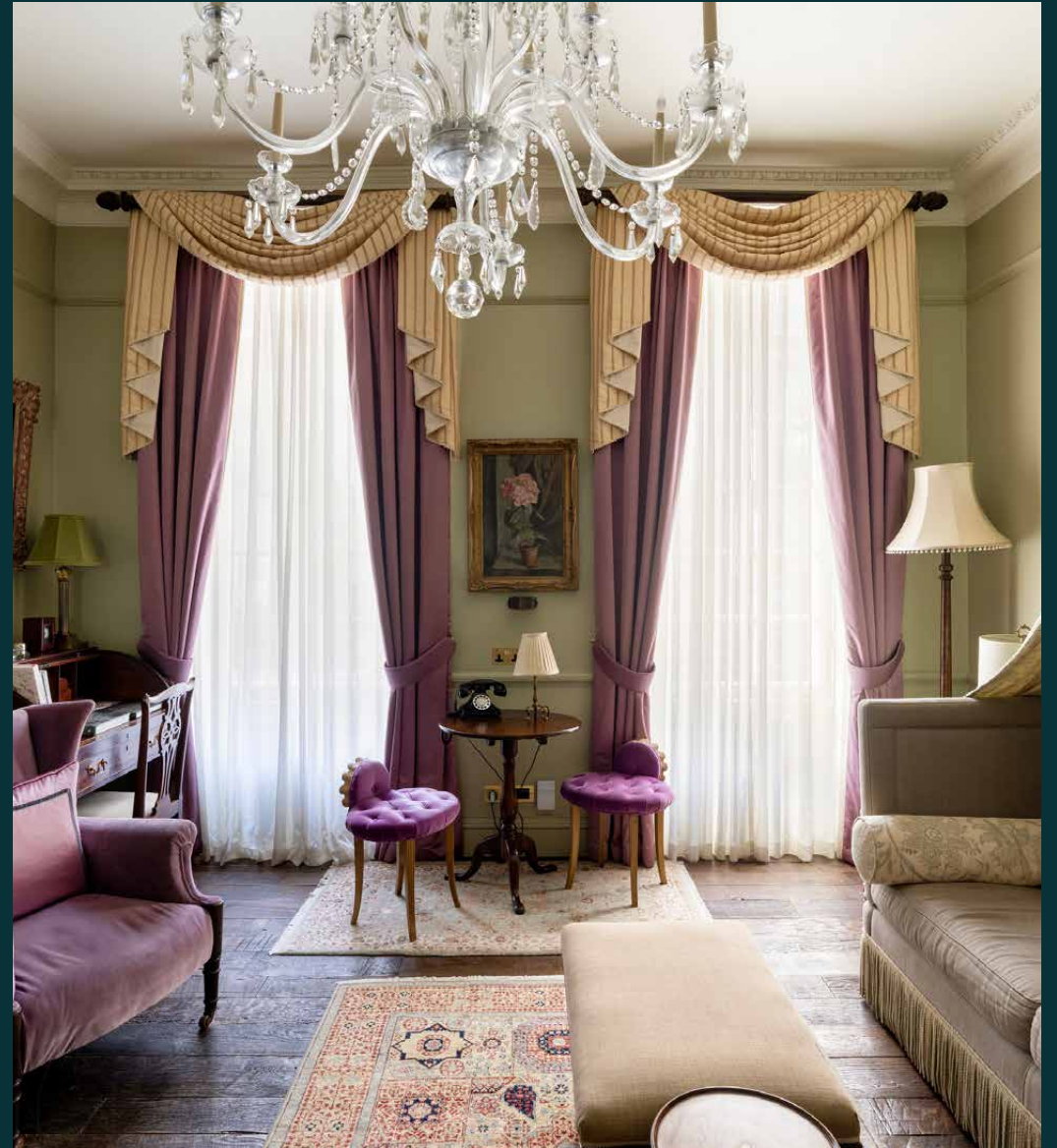


domus
stay.

Upper Berkeley Street

MARYLEBONE

6 Bedrooms, 6 Bathrooms
For 12 guests





Step back in time at this historic six-bedroom townhouse, once owned by Jane Austen's brother.

Tucked away in the heart of Marylebone, this Grade II-listed townhouse invites you into a Georgian-inspired world of four-poster beds, gilt-framed portraits and afternoons spent flicking through first editions. Once owned by Henry Austen – clergyman, banker and brother of novelist Jane – the house has been carefully restored by Russell Sage Studio, Feix&Merlin Architects and Jane and Steven Collins, reviving its 18th-century grandeur while ensuring every modern comfort is close at hand.

The result is immersive without feeling staged: antique furniture, draped pelmets and richly layered textiles nod to the building's roots, while air conditioning, a Sonos sound system and seamless concierge services keep life quietly ticking over.



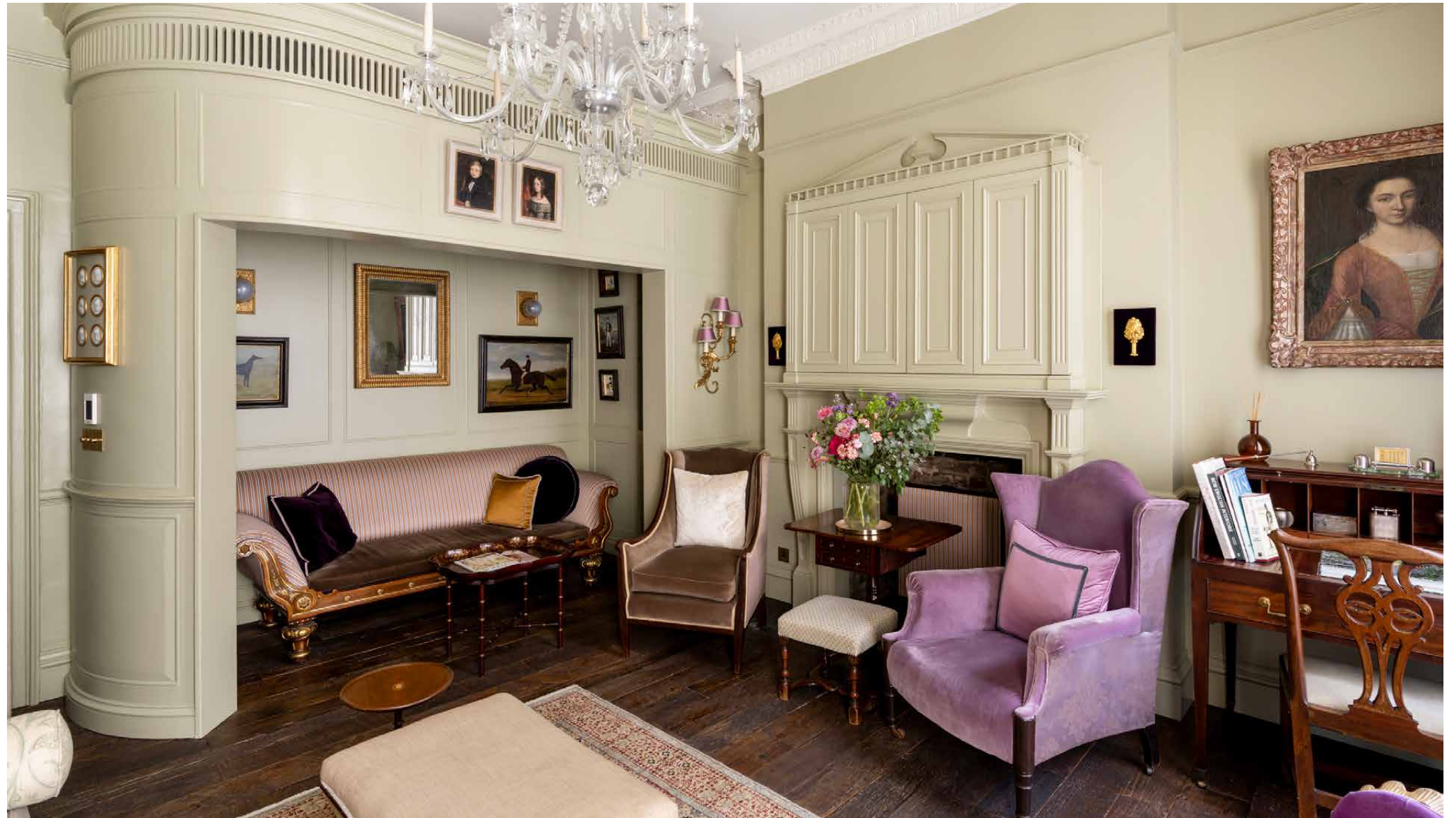
The living spaces

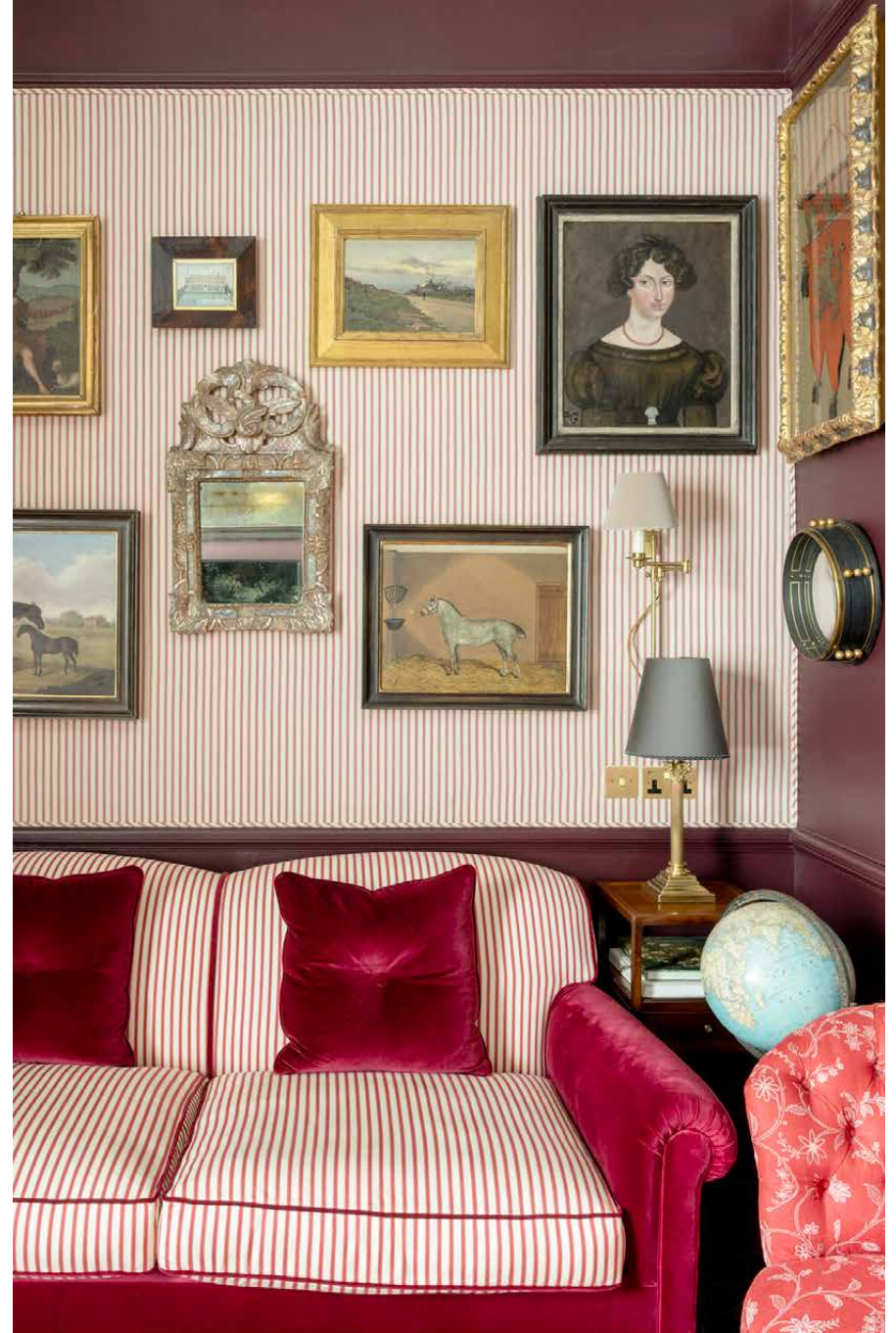
Days here unfold across three distinct living spaces, each with its own stately atmosphere. The reading room is perhaps the most inviting. Beneath an apple-green canopied sofa and sparkling chandelier, there are books to browse, a writing desk for penning postcards and a discreet bar tucked around the corner for a well-timed nightcap.

Across the hall, the drawing room feels moodier and more intimate. Red pinstriped wallpaper, deep sofas and warm lighting create a space made for conversation, whether gathering before dinner or unwinding after a day spent exploring the city.

For quieter moments, slip behind a heavy velvet curtain into the carriage snug. Designed to evoke the glamour of a vintage train carriage, complete with tasseled velvet stools and cocooning interiors, it's an atmospheric corner for cocktails.









Kitchen & dining

On the lower-ground floor, the kitchen and dining space continues the home's sense of occasion. An Aga range cooker, framed by Delft-blue patterned tiles, anchors the room, while a substantial oak dining table seats up to 14 guests for everything from leisurely breakfasts to celebratory dinners.

The atmosphere strikes a balance between grandeur and warmth; elegant enough for entertaining yet relaxed enough for everyday living. Behind panelled cabinetry sits a kitchen equipped for every eventuality. There's also a separate chef's kitchen behind the scenes, should you wish to leave the cooking to the professionals. Our concierge can arrange everything as required.



Bedrooms & bathrooms

The six bedroom suites each tell their own story, taking inspiration from members of the Austen family. Expect mahogany four-poster beds, striped canopies, antique dressers and richly coloured walls, all layered with thoughtful details that make each room feel restorative; designed for slowing down and settling in.

Among the most memorable is the Eliza room, a suite that feels both theatrical and deeply restful. Here, a magnificent bed trimmed with antique lace takes centre stage, accompanied by delicate lampshades and a cleverly integrated bathroom concealed within a tent-like enclosure.

Bathrooms take a more contemporary turn, pairing marble, mosaic finishes and deep freestanding bathtubs with ornate mirrors and decorative flourishes that feel luxurious without losing touch with the character of the house.







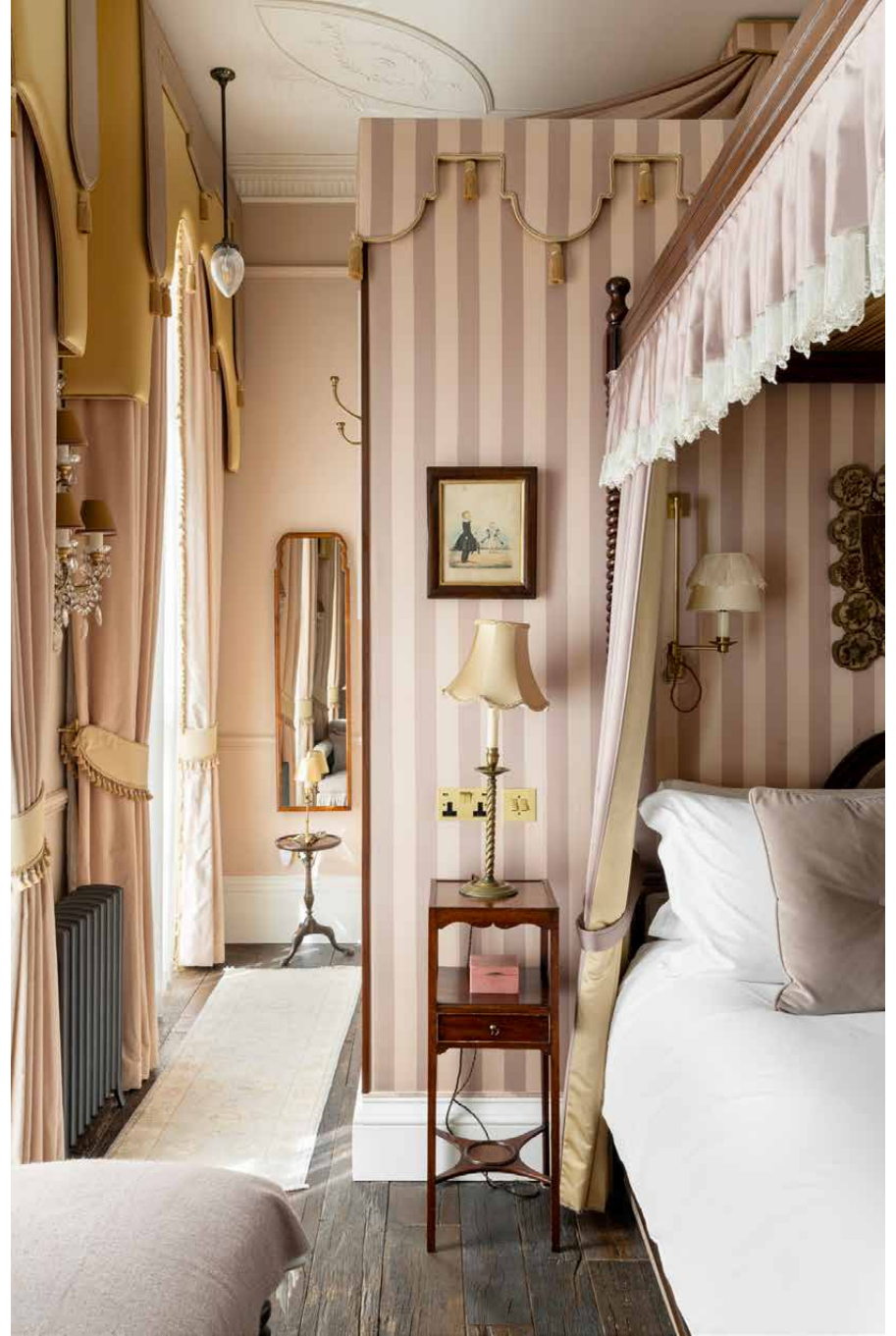


















Outdoor space

Just off the second floor, a small terrace offers a peaceful vantage point above Marylebone's streets below. A mirrored wall creates an intimate sense of enclosure, while outdoor seating, cosy blankets and an all-season heater allow you to linger long after sunset. Whether starting the day with coffee or ending it with a glass of wine under the glow of lantern light, it's a quietly charming extension of the house itself.

The neighbourhood

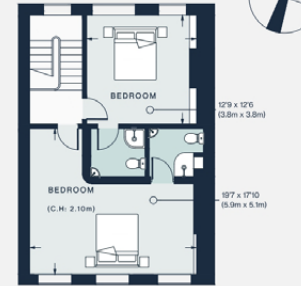
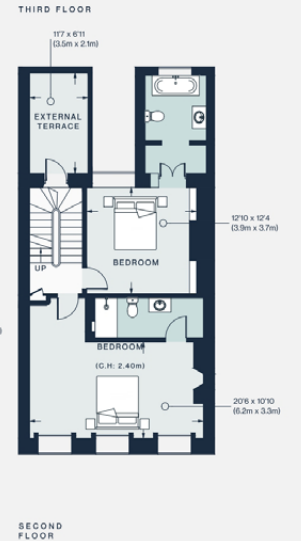
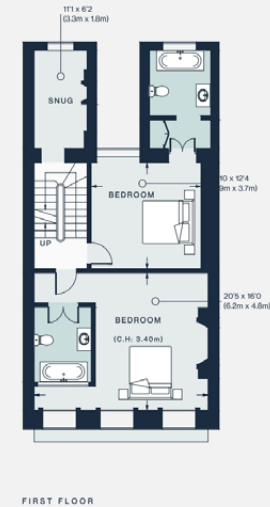
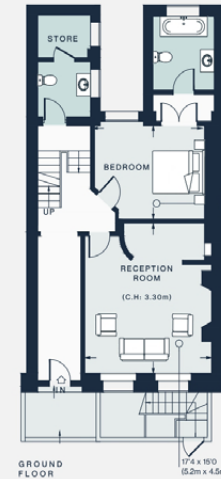
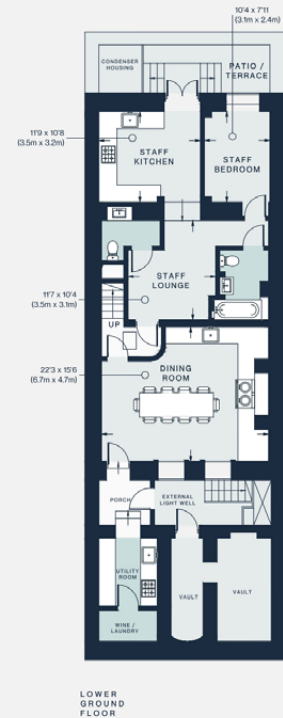
Just moments from Marylebone Village, Upper Berkeley Street places the best of the neighbourhood within easy reach. Browse the independent boutiques of Marylebone Lane and Marylebone High Street, or stock up on artisan produce from La Fromagerie, FishWorks and Paul Rothe & Son. Culture is equally close at hand, with the Wallace Collection and Wigmore Hall both nearby, while dining spans everything from nose-to-tail fare at St. John to the timeless Viennese elegance of Fischer's. For greener pursuits, Hyde Park and Regent's Park offer open-air theatre, picnic spots and broad pathways for a morning run – all within walking distance.



Property features

- Restored Grade II listed townhouse
- Architect designed
- Generous reading room
- Drawing room
- Cosy snug
- Open-plan kitchen and dining room
- Six bedroom suites
- Private terrace
- Sonos sound system
- Envious Marylebone location

Approx. 3,500 sq ft / 325 sq m



Approx. Gross Internal Area
 Lower Ground Floor = 940 sq ft / 87.3 sq m
 Ground Floor = 752 sq ft / 69.9 sq m
 First Floor = 753 sq ft / 70.0 sq m
 Second Floor = 678 sq ft / 63.0 sq m
 Third Floor = 605 sq ft / 56.2 sq m
 Vaults = 143 sq ft / 13.3 sq m
 Total = 3871 sq ft / 359.7 sq m

Guest & concierge services

Our concierge team are here to help guests settle in, seamlessly. Centre court tickets to Wimbledon, Premier League seats with the best views, Savile Row tailors on standby, or a private chef to cater to individual tastes – we aim to elevate every stay.

From the moment of booking with us, each guest has a single point of contact to finesse the details. Our statement spaces are just the starting point – to ensure everyone feels at home, our rates include:

- Weekly housekeeping
- Flexible check-in/out
- Luxury linens and Bamford toiletries
- Legal compliance on all our homes
- A personal welcome and arrival essentials
- Unlimited access to guest services and tailored experiences
- Professional inventory inspection before and after every stay
- Access to a curated portfolio of sole agency properties



domus stay.

Please get in touch if you have any questions
or require any further information.

hello@domusstay.com

+44 (0)20 8168 8880

The property particulars are a guide not statements. Descriptions, photographs, and plans are for guidance only. The Property is offered "subject to contract and references". No warranties, representations, License or Tenancy is given by Domus Stay. Our full disclaimer together with trading names and our Privacy Policy is shown on our website

© Domus Stay 2025. All rights reserved.

