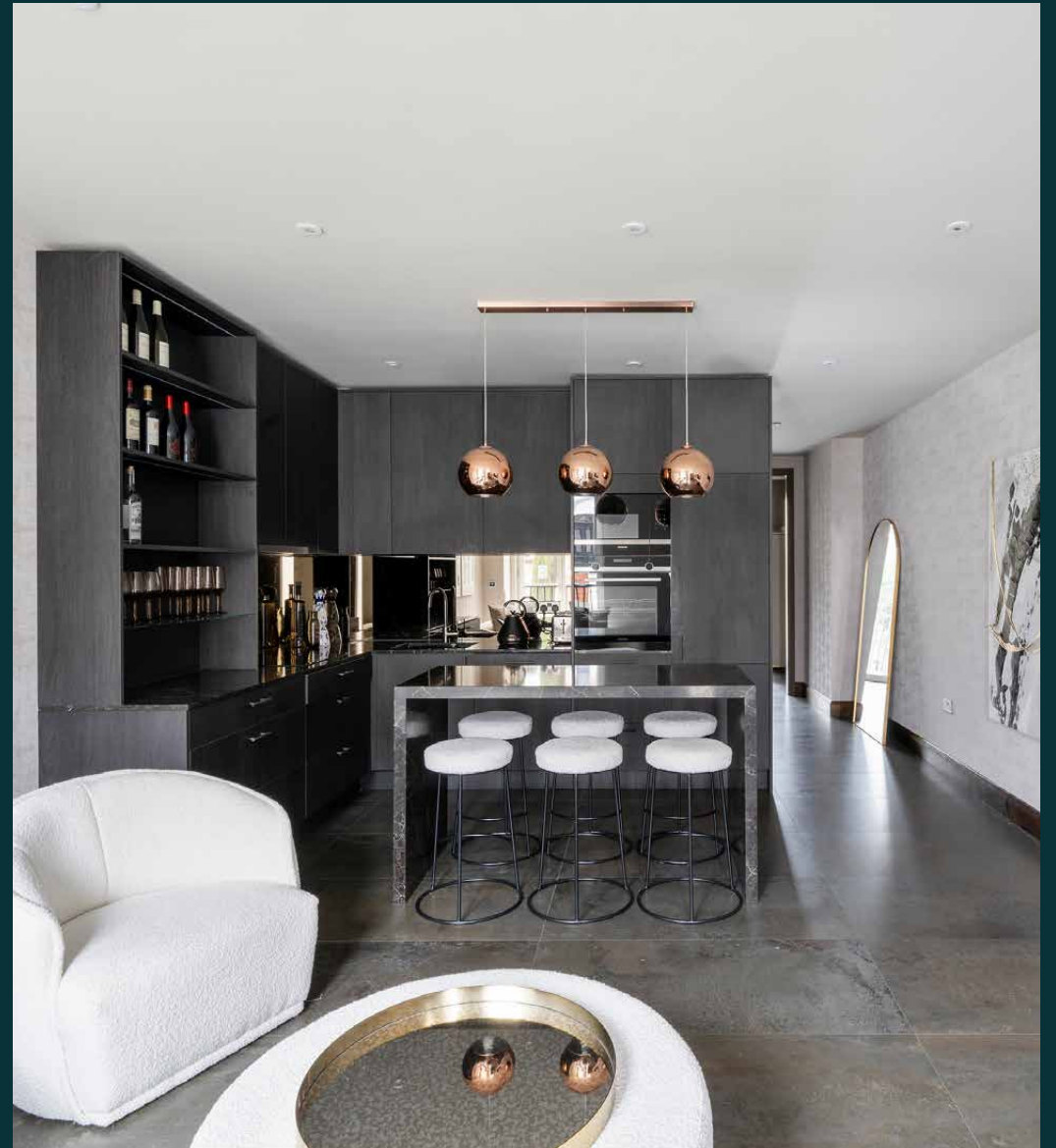


domus
stay.

The Atrium

LITTLE VENICE & MAIDA VALE W9

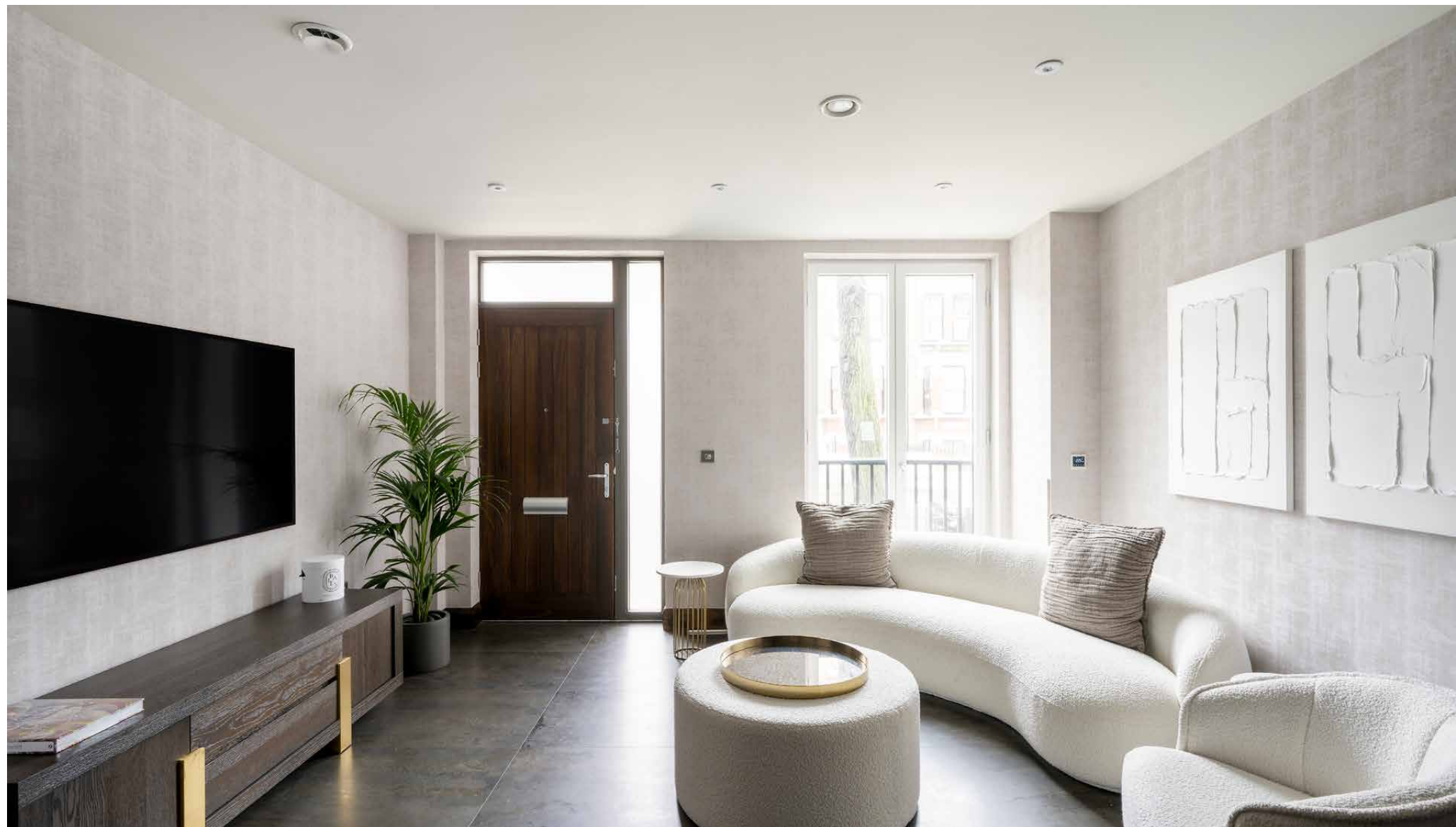
3 Bedrooms, 2 Bathrooms
For 6 guests





Innovative design paints a modern picture at this Maida Vale duplex. Plus, a private terrace and garden.

Set in the welcoming centre of Maida Vale, this flawlessly-crafted three-bedroom duplex is a stylish springboard to the city. Exploring the capital comes easily here; Warwick Avenue is less than five minutes' stroll away.

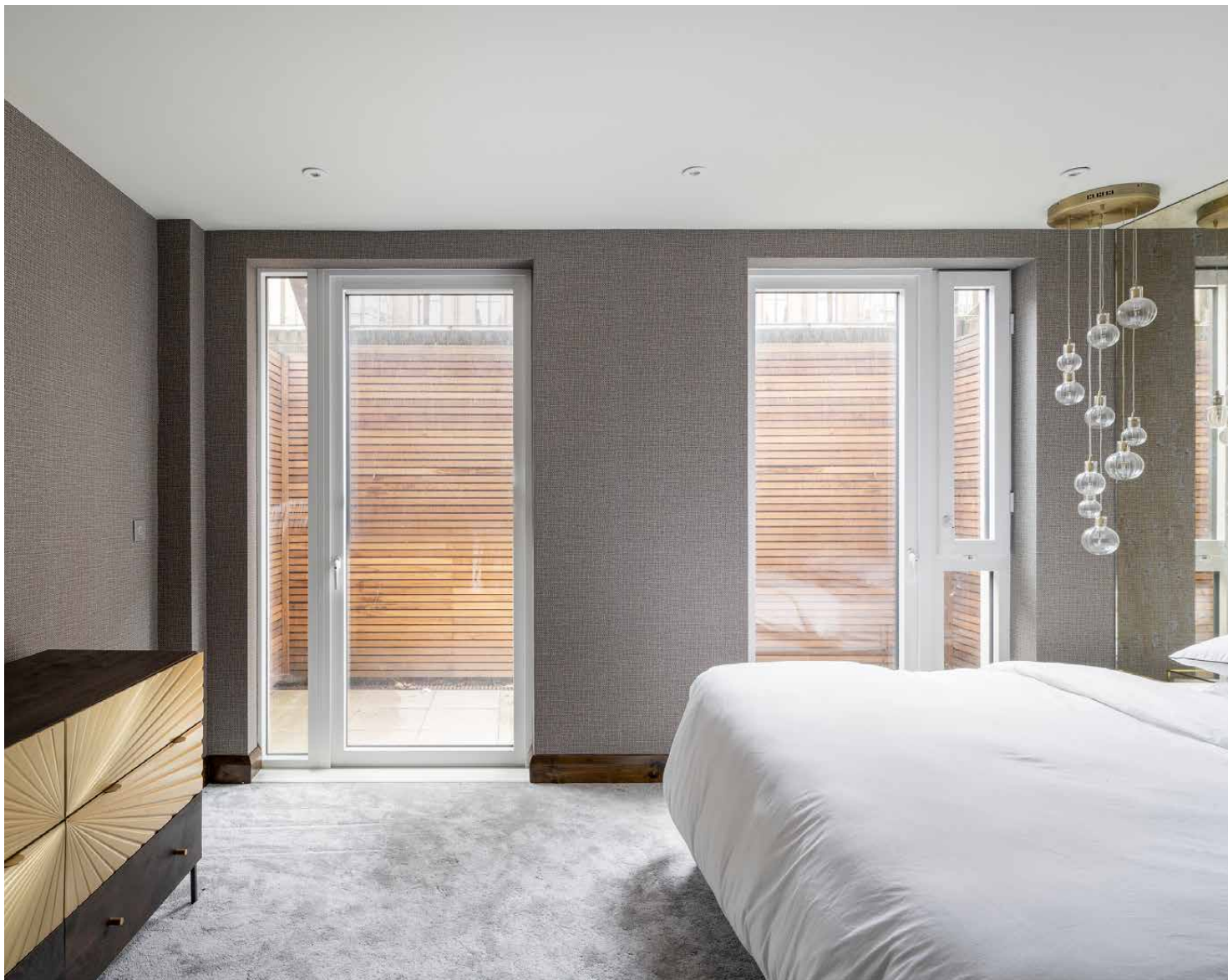


The living spaces

A set of steps leads you to the warm-toned wood front door, which opens into a spacious reception room and kitchen. A room replete with material creativity, aged bronze stone floors and textured wallpaper span the space, making a striking backdrop for contemporary artwork, boucle sofa and barstools. The handmade German kitchen is bold with dark stained wood cabinetry, glossy Italian stone worktops and hi-tech appliances. A trio of gilded pendant lights hang over the island, casting a warm glow when daylight dims.







Bedrooms & bathrooms

Found on the lower ground floor, the principal bedroom suite is introduced through a sleek dedicated dressing area. Luxe in style and laidback in atmosphere, plush carpeted floors give way to full-height windows that fill the space with light. There's direct access to a wood-clad terrace through the French doors. Its en suite bathroom is finished with oversized stone tiles and a bathtub.

A second bedroom sits opposite, with glass doors that open to a private patio garden. The third bedroom is tucked away upstairs, featuring a minimalist bunk bed and glass doors that span the width of the room. Beyond, a balcony is tailor-made for sunny interludes. Serving both bedrooms is a striking Italian marble shower room with a glass-framed shower that adds an industrial edge.





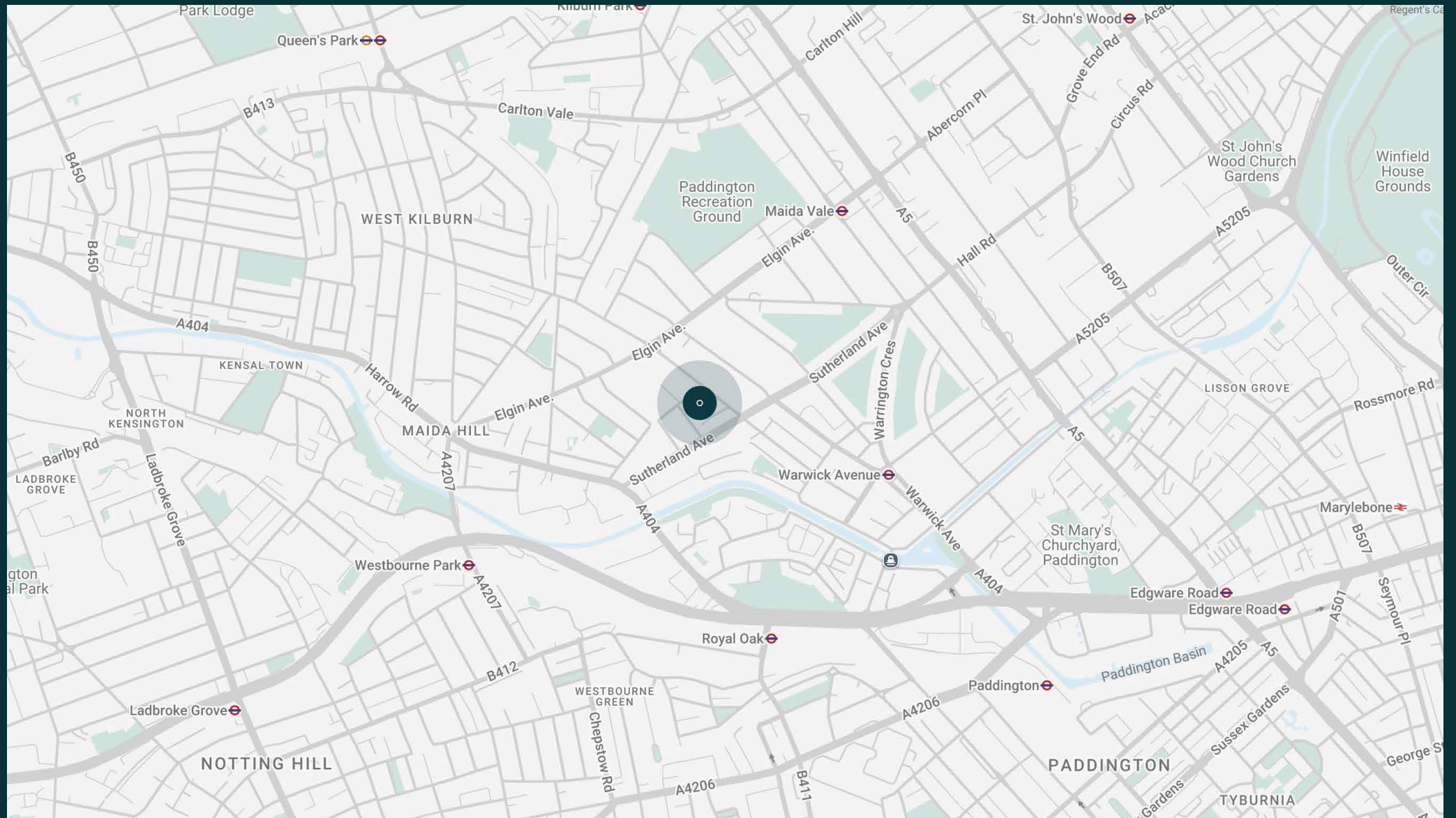


The neighbourhood

Set in the friendly heart of Maida Vale, The Atrium puts you within easy reach of the postcode's most picturesque offerings.

Take a stroll to the Grand Union Canal and admire the colourful barges along its peaceful stretch. Enjoy the views over lunch at The Waterway, followed by a show at the Canal Cafe Theatre or Puppet Theatre Barge. Clifton Road and Formosa Street are your go-tos for grocery staples, welcoming cafes and independent boutiques – plus local favourite gastropub, the Prince Alfred. Venture a little further to reach the antiques markets and coveted eateries along Golborne Road, or head up to St John's Wood for Lord's Cricket Ground and Regent's Park Zoo.





Property features

- Open-plan reception room and bespoke kitchen
- Principal bedroom suite with dressing area and terrace
- Guest bedroom with balcony
- One further bedroom with patio
- Shower room
- Patio garden
- Secure gated parking with EV charging
- City of Westminster
- Six month minimum stay

Approx. 98.6 sq m / 1,062 sq ft



LOWER GROUND FLOOR



GROUND FLOOR

Approx. Gross Internal Area = 1062 sq ft / 98.6 sq m

Floor plans are for illustrative purposes only and not to scale. Compliant with RICS code of measuring practice.

Guest & concierge services

Our concierge team are here to help guests settle in, seamlessly. Centre court tickets to Wimbledon, Premier League seats with the best views, Savile Row tailors on standby, or a private chef to cater to individual tastes – we aim to elevate every stay.

From the moment of booking with us, each guest has a single point of contact to finesse the details. Our statement spaces are just the starting point – to ensure everyone feels at home, our rates include:

-
- Weekly housekeeping
 - Flexible check-in/out
 - Luxury linens and Bamford toiletries
 - Legal compliance on all our homes
 - A personal welcome and arrival essentials
 - Unlimited access to guest services and tailored experiences
 - Professional inventory inspection before and after every stay
 - Access to a curated portfolio of sole agency properties





Please get in touch if you have any questions
or require any further information.

hello@domusstay.com

+44 (0)20 8168 8880

The property particulars are a guide not statements. Descriptions, photographs, and plans are for guidance only. The Property is offered "subject to contract and references". No warranties, representations, License or Tenancy is given by Domus Stay. Our full disclaimer together with trading names and our Privacy Policy is shown on our website

© Domus Stay 2025. All rights reserved.

