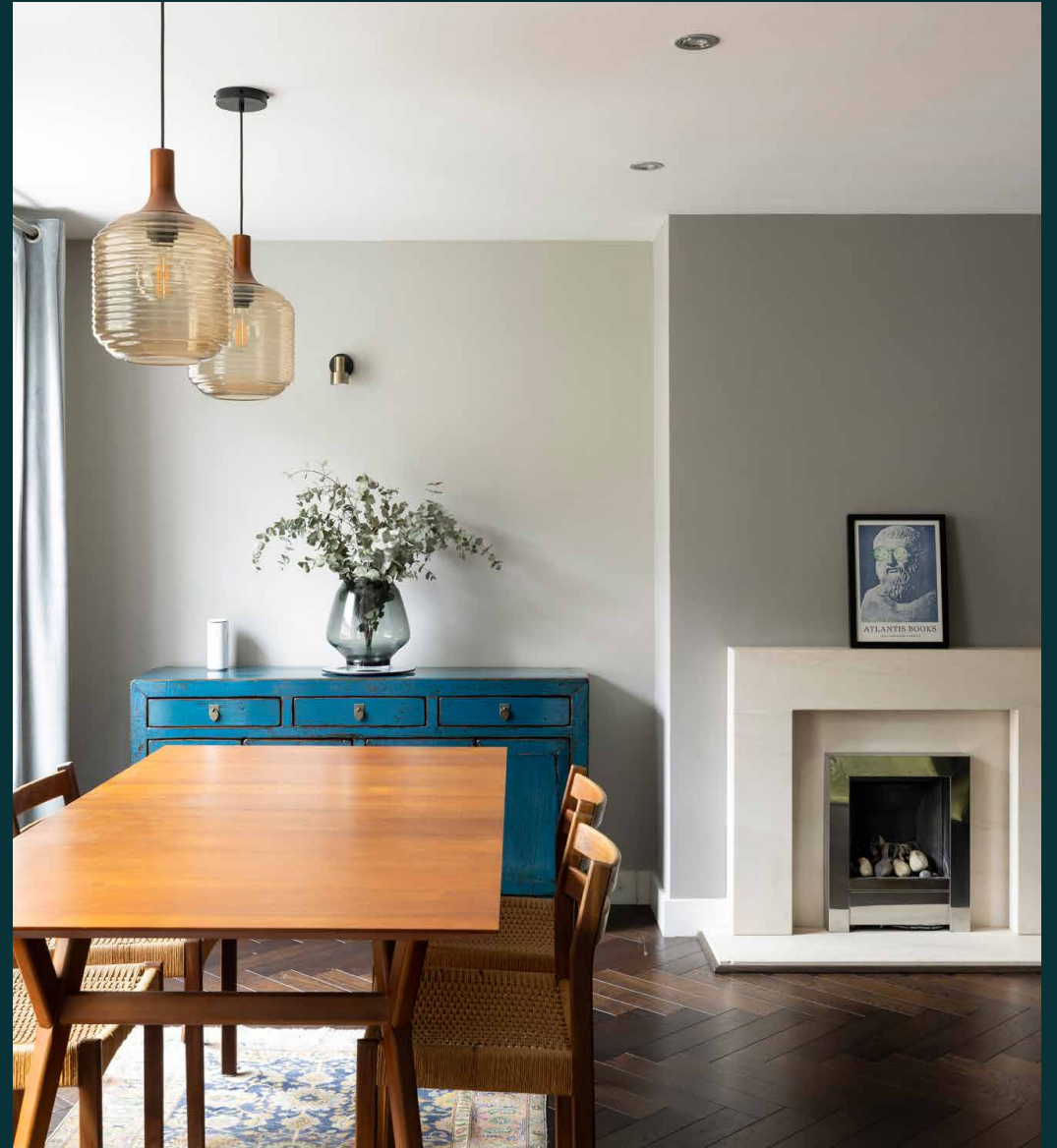


domus
stay.

Tarrant Place

MARYLEBONE W1H

2 Bedrooms, 2 Bathrooms
For 2 guests





Nestled in a private gated mews, this two-bedroom duplex home is a serene retreat in the heart of Marylebone.

Set within an exclusive gated enclave just moments from the charming St Mary's Church, this two-bedroom duplex apartment is all refined tones and sleek interior design.

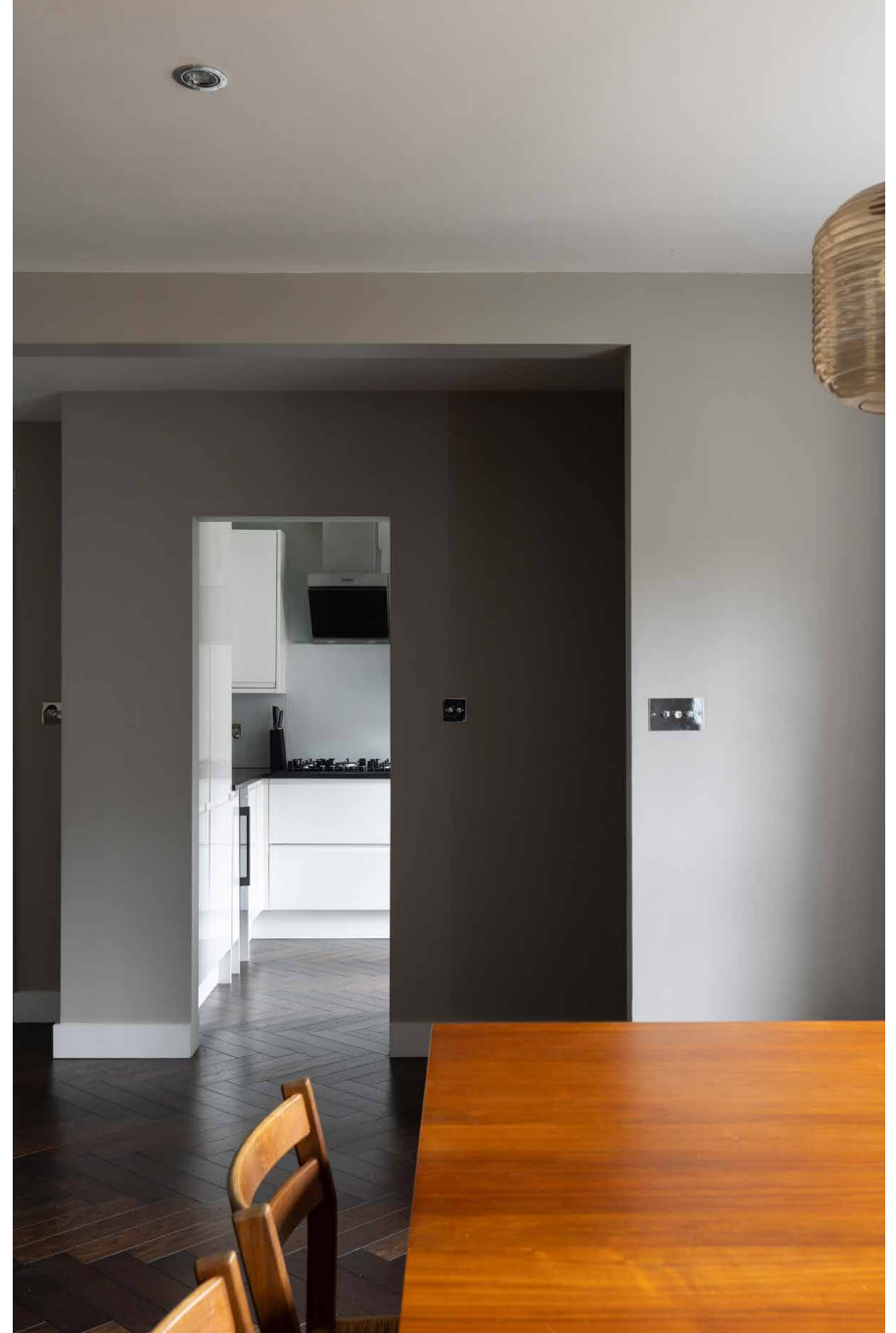


The living space

Enter from the cobbled cul-de-sac into the calming open-plan dining and reception room. Pale walls and dark herringbone floors have a quiet sophistication to them, illuminated through two large sash windows. A trio of glass pendant lights cast a warm glow over the dining table, complemented by the minimalist fireplace. Beyond, a luxe tuxedo sofa and lime-green armchair are poised in front of a television, perfect for cosy film nights. The kitchen is a sleek, streamlined affair, with glossy whitewashed cabinets and integrated appliances.







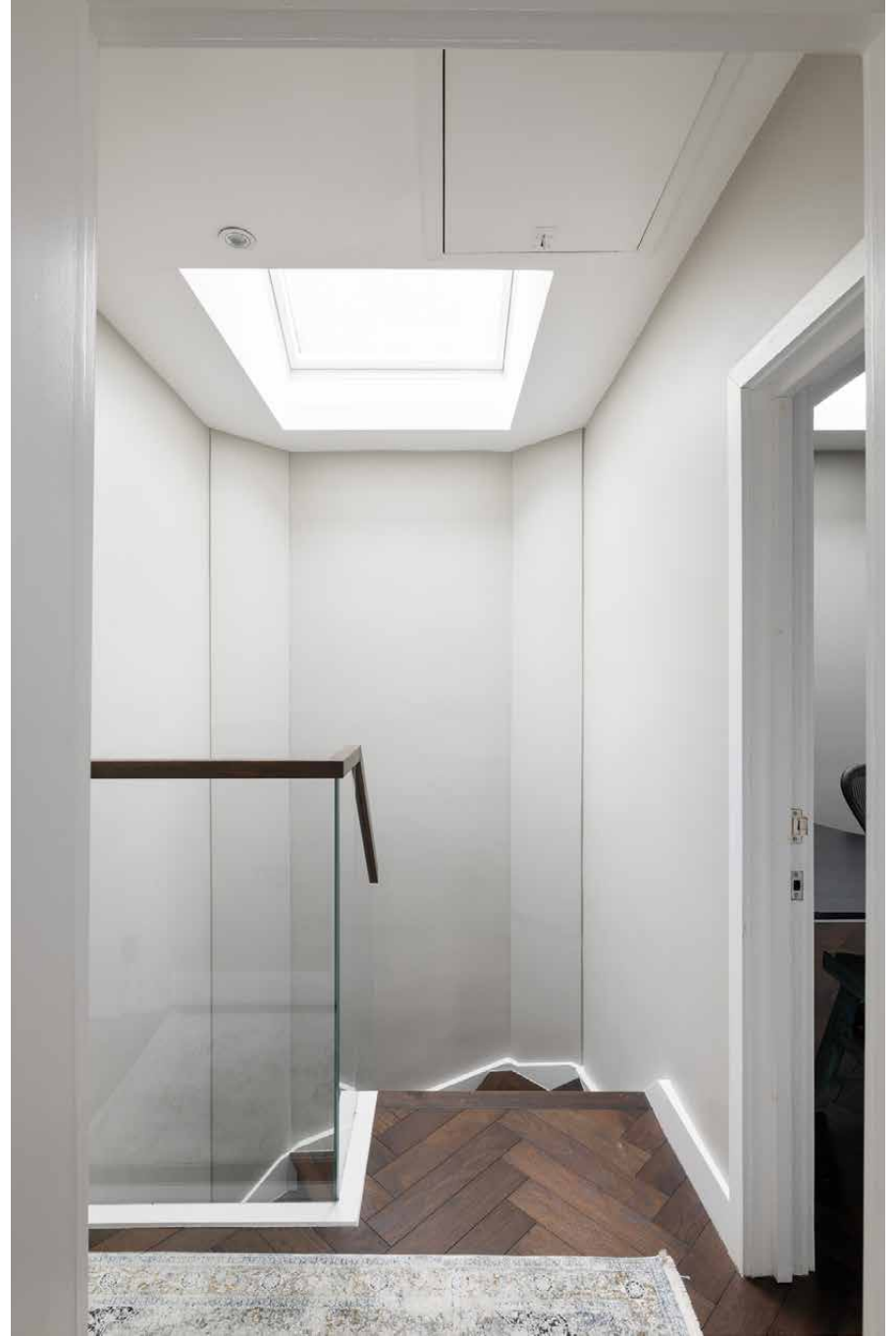




Bedrooms & bathrooms

Upstairs, the bedrooms maintain a sense of tranquillity with a pared-back aesthetic. The principal bedroom suite has soft grey walls and a row of integrated wardrobes – offering a neat storage solution for new-found treasures. Next door, the en suite bathroom is modish, featuring a mirror framed with mosaic tiles. The guest bedroom is a peaceful sanctum, filled with natural light and served by a bathroom downstairs. Completing the first floor is a quiet study, complete with a dark wood desk and skylight – which can be reimagined as a bedroom.





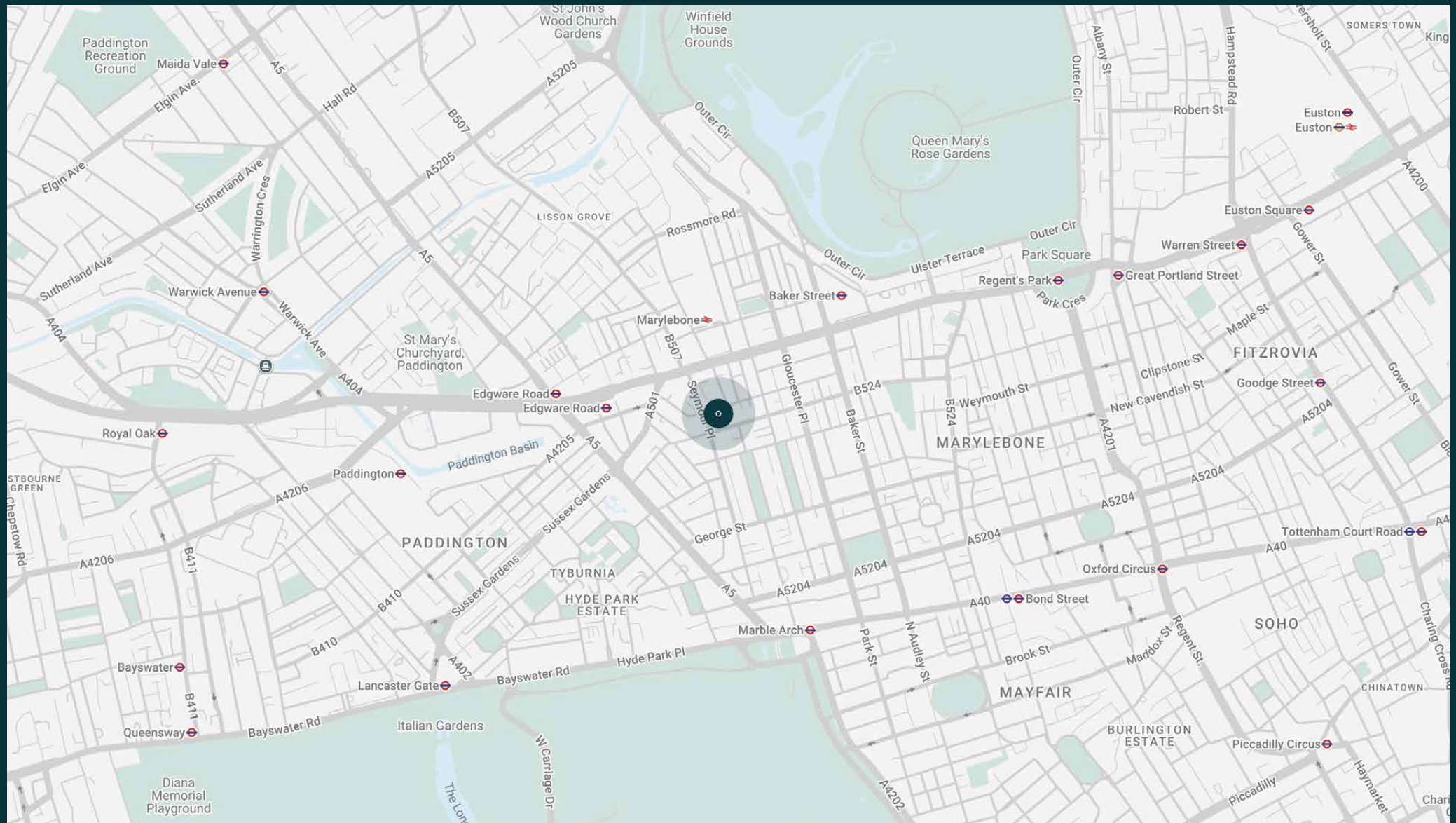


The neighbourhood

Central London with a village-like feel.

Marylebone is an enclave buzzing with independent shops and high-end eateries, tucked between the vibrant energy of Oxford Street, the refined elegance of Mayfair and the natural stretches of Regent's Park. After a day perusing the high-end boutiques of Marylebone High Street, eat well at famed dining destinations – Chiltern Firehouse, KOL and Fischers to name a few. On Sundays, stock up on local produce at the local farmer's market. During the summer, there's a fantastic programme of performances at Regent Park's Open Air Theatre, while the London Zoo is a fantastic day out year-round.

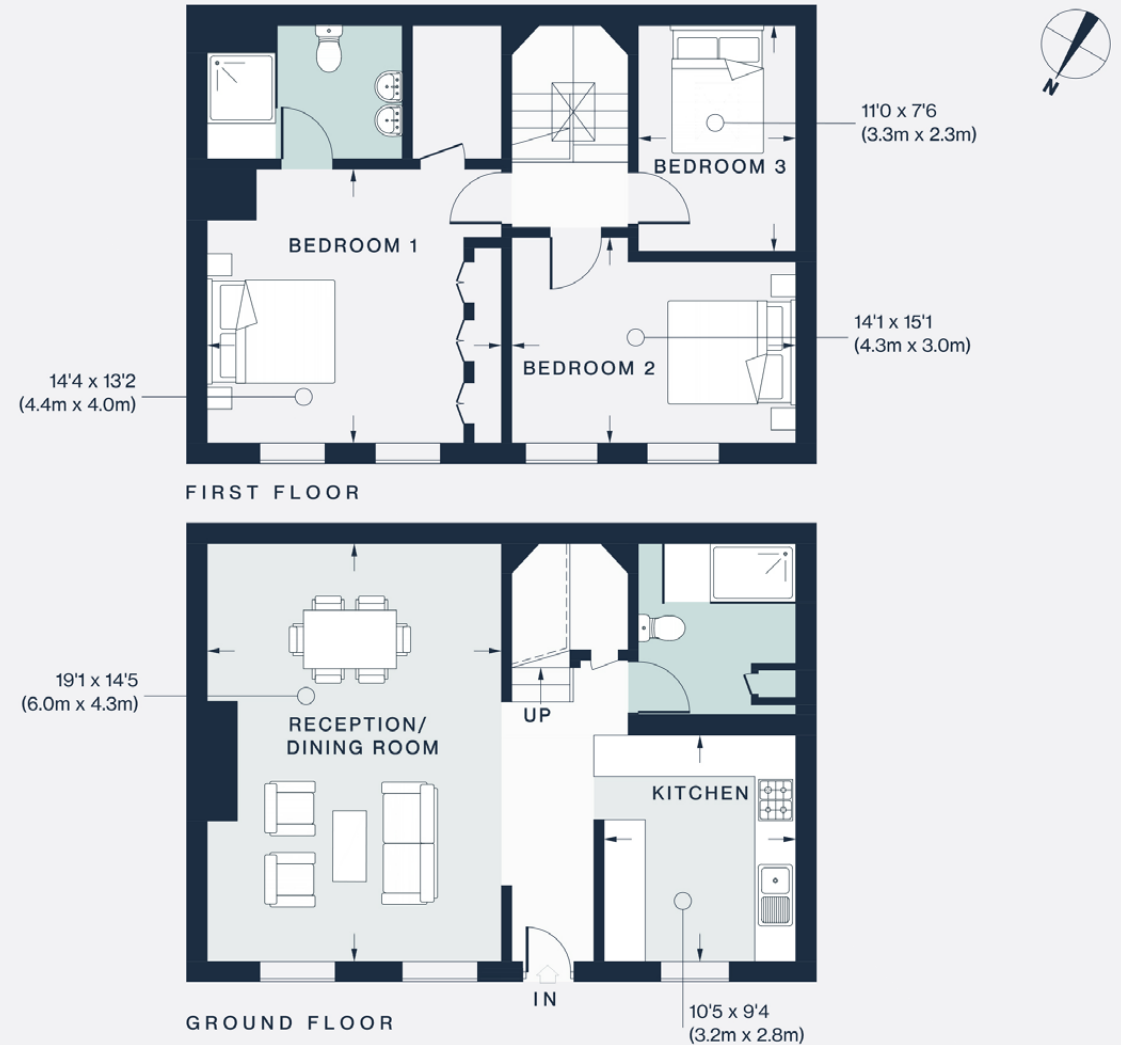




Property features

- Open-plan reception and dining room
- Contemporary kitchen
- Principal bedroom suite
- Guest bedroom
- Additional bathroom
- Study-cum-bedroom
- Sought-after mews location
- City of Westminster

Approx. 107 sq m / 1,152 sq ft



Approx. Gross Internal Area = 1,152 sq ft / 107.0 sq m

Floor plans are for illustrative purposes only and not to scale. Compliant with RICS code of measuring practice.
Prepared for Domus Stay. Copyright © All Rights Reserved.

Guest & concierge services

Our concierge team are here to help guests settle in, seamlessly. Centre court tickets to Wimbledon, Premier League seats with the best views, Savile Row tailors on standby, or a private chef to cater to individual tastes – we aim to elevate every stay.

From the moment of booking with us, each guest has a single point of contact to finesse the details. Our statement spaces are just the starting point – to ensure everyone feels at home, our rates include:

-
- Weekly housekeeping
 - Flexible check-in/out
 - Luxury linens and Bamford toiletries
 - Legal compliance on all our homes
 - A personal welcome and arrival essentials
 - Unlimited access to guest services and tailored experiences
 - Professional inventory inspection before and after every stay
 - Access to a curated portfolio of sole agency properties





Please get in touch if you have any questions
or require any further information.

hello@domusstay.com

+44 (0)20 8168 8880

The property particulars are a guide not statements. Descriptions, photographs, and plans are for guidance only. The Property is offered "subject to contract and references". No warranties, representations, License or Tenancy is given by Domus Stay. Our full disclaimer together with trading names and our Privacy Policy is shown on our website

© Domus Stay 2025. All rights reserved.

