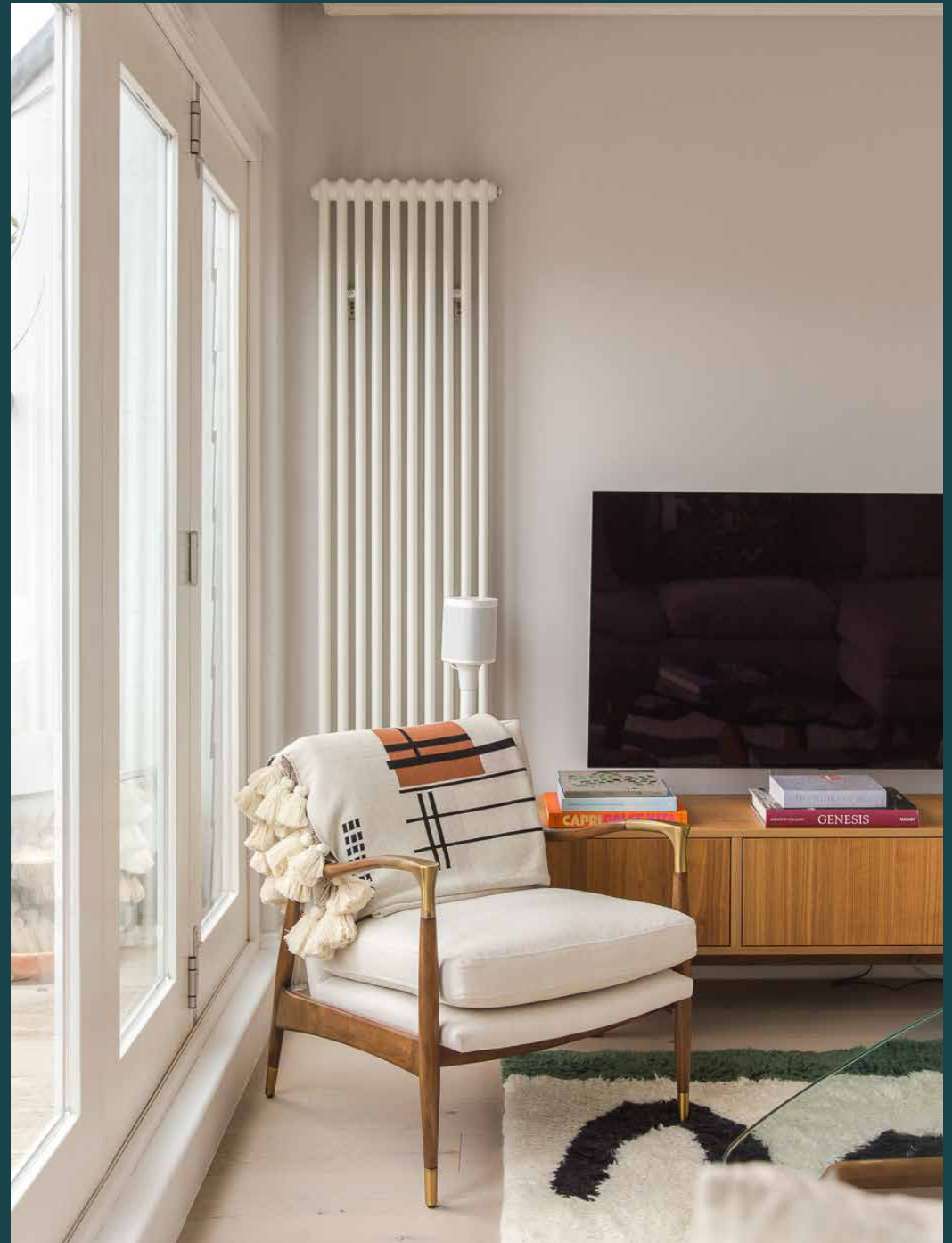

Talbot Road

Notting Hill W2

3 Bedrooms, 3 Bathrooms
For 6 guests





Minimalist in design, welcoming in feel, this three-bedroom apartment offers the right amount of escapism.

Perched on the corner of Talbot Road, this three-bedroom end-of-terrace apartment sits between quintessential Notting Hill and the neighbourhood's lively Portobello Road. There's a peaceful, community-vibe to its leafy streets. Inside, the interiors echo the quiet surroundings.

An inverted layout makes the most of the natural light. The third-floor, open-plan living space is framed by concertina doors and thoughtfully placed skylights than channel natural light. Everyday life plays out here. Quiet evenings on the sofa. Meals around the dining table. Entertaining in the streamlined kitchen. Or pick up a page-turner and head for the snug reading nook – the Eames chair is prime kicking back territory. On warmer days, catch the sunset from the west-facing balcony.





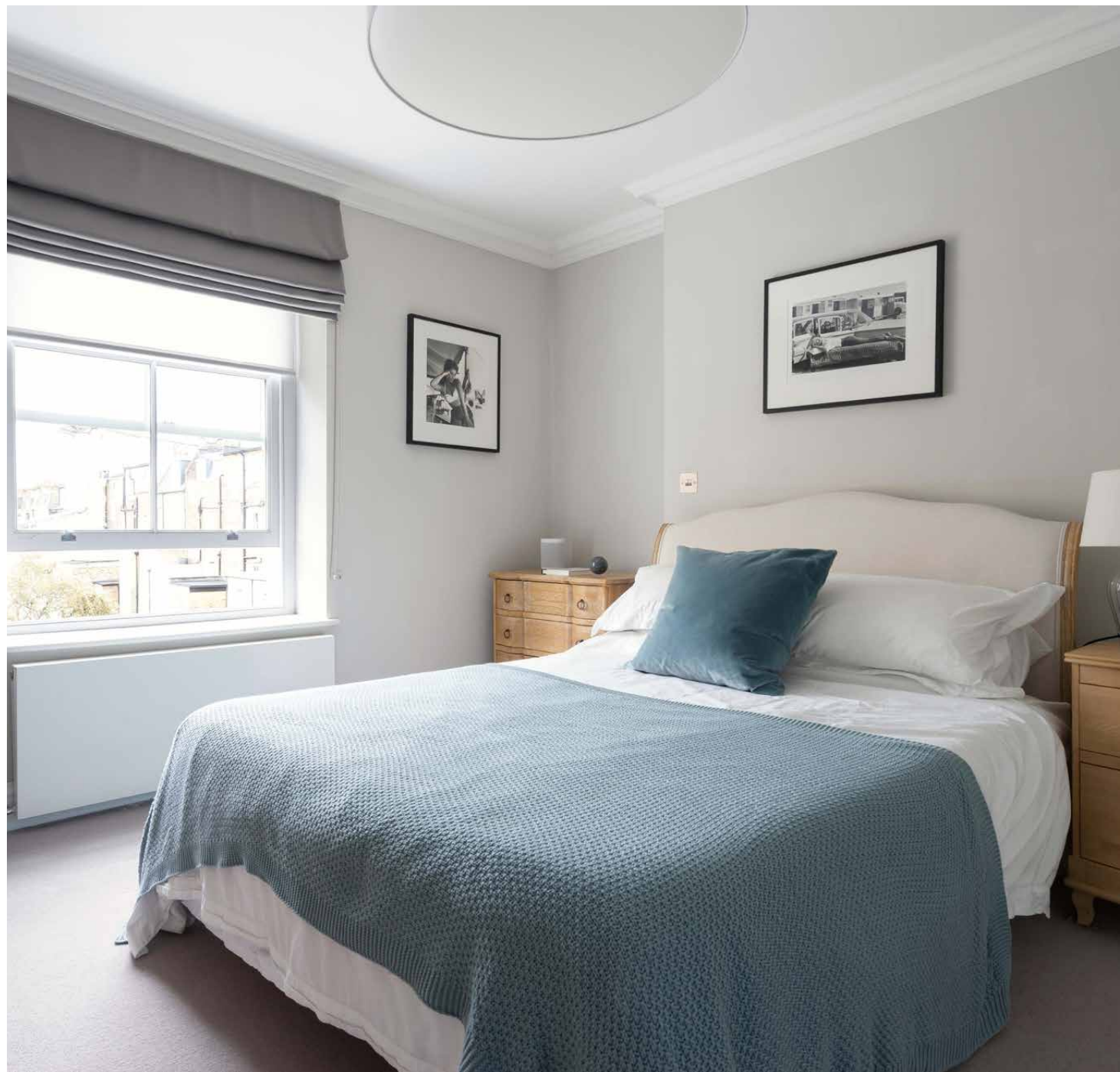


Impressive skylights, concertina doors
and high ceilings channel natural light.



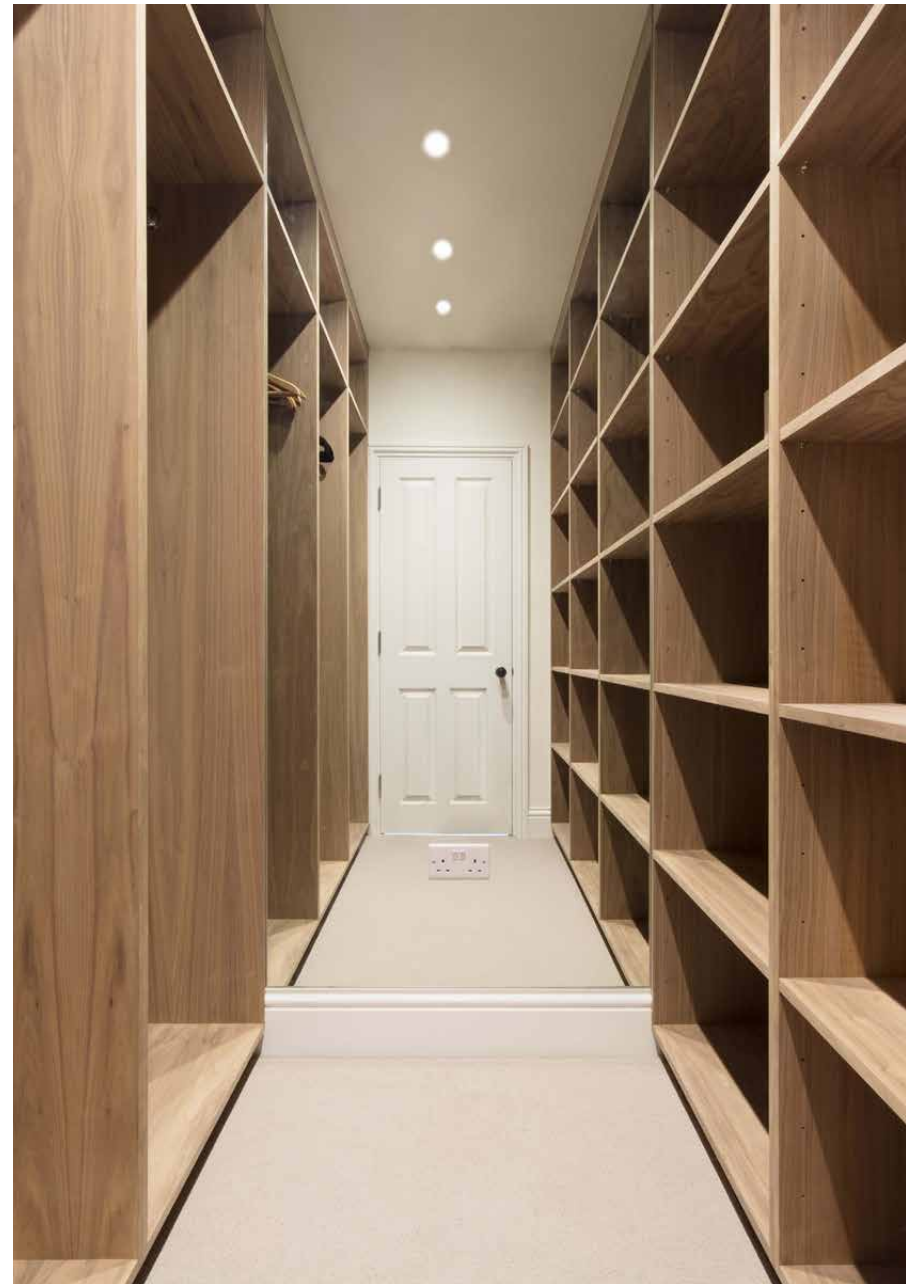
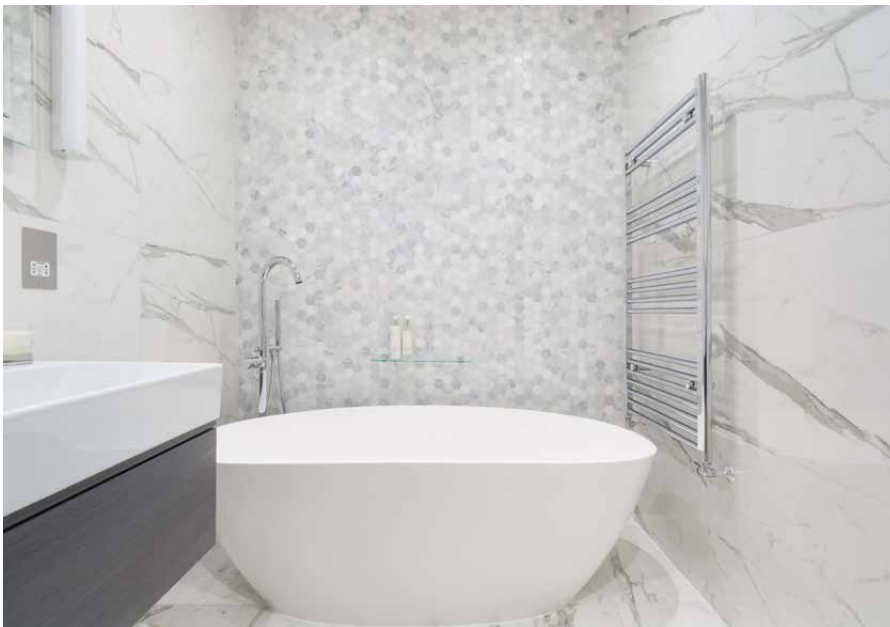
Open-plan living and a suntrap balcony.
The right amount of escapism.

Bedrooms are found on the level below – expect bright spaces and ultra-soft textures. Minimalism is the order of the day in the principal suite, maintained by the spacious walk-in dressing room. The marble-clad en suite, with its freestanding bathtub, keeps morning routines running effortlessly. The rest of the floor is given over to two further bedrooms, one with an en suite bathroom, the other served by a family bathroom. The third has potential as a brightly lit home office.



“

All the luxuries of contemporary design combine in the soothing principal bedroom, complete with a sophisticated bathroom and shelf-lined dressing room.







LOCATION

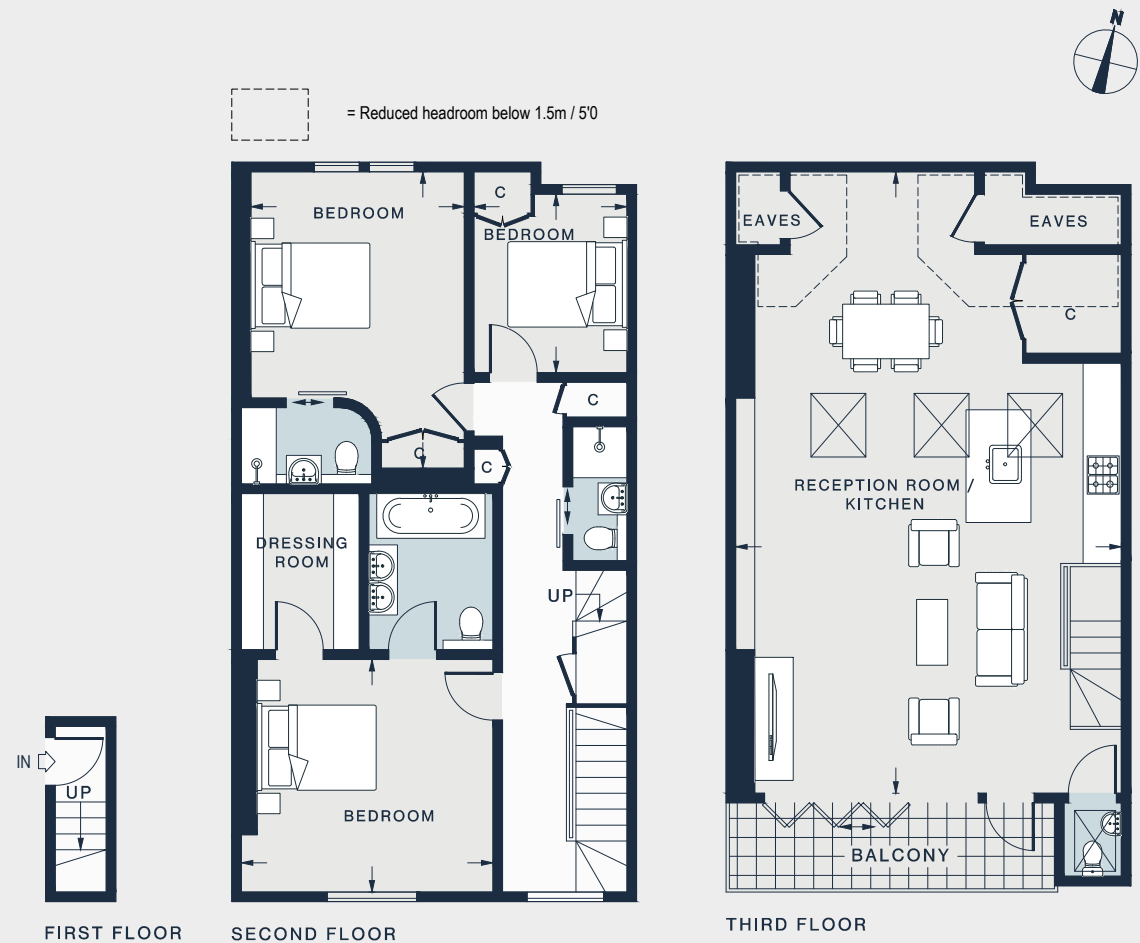
Immersed in a residential atmosphere.
Minutes from Notting Hill's upmarket
boutiques and restaurants.

Reach the neighbourhood's most iconic address in minutes. Within five, you can be browsing Portobello Road or Westbourne Grove. Sip on a coffee at Beam or get your heart racing at Bodyism. Grab something biodynamic at Daylesford Organic and head in the direction of Hyde Park for an al fresco lunch. Spend evenings at local favourite The Cow or savour the fine dining on offer at The Ledbury.



PROPERTY HIGHLIGHTS

- Open-plan kitchen and reception room
- Principal bedroom suite with dressing room
- Guest bedroom suite
- One further bedroom
- Family bathroom
- Terrace
- City of Westminster





Please don't hesitate to get in touch
if you have any questions or require
any further information.

hello@domusstay.com

+44 (0)20 8168 8880

Domus Stay provides the perfect combination of property, place and personal service for the world's most remarkable people. If you have any questions, or if we can help in any way, please contact us on the above number. Be it about a property you have, a property you want, dates to check or any special requirements you may need, we'd love a chat.

