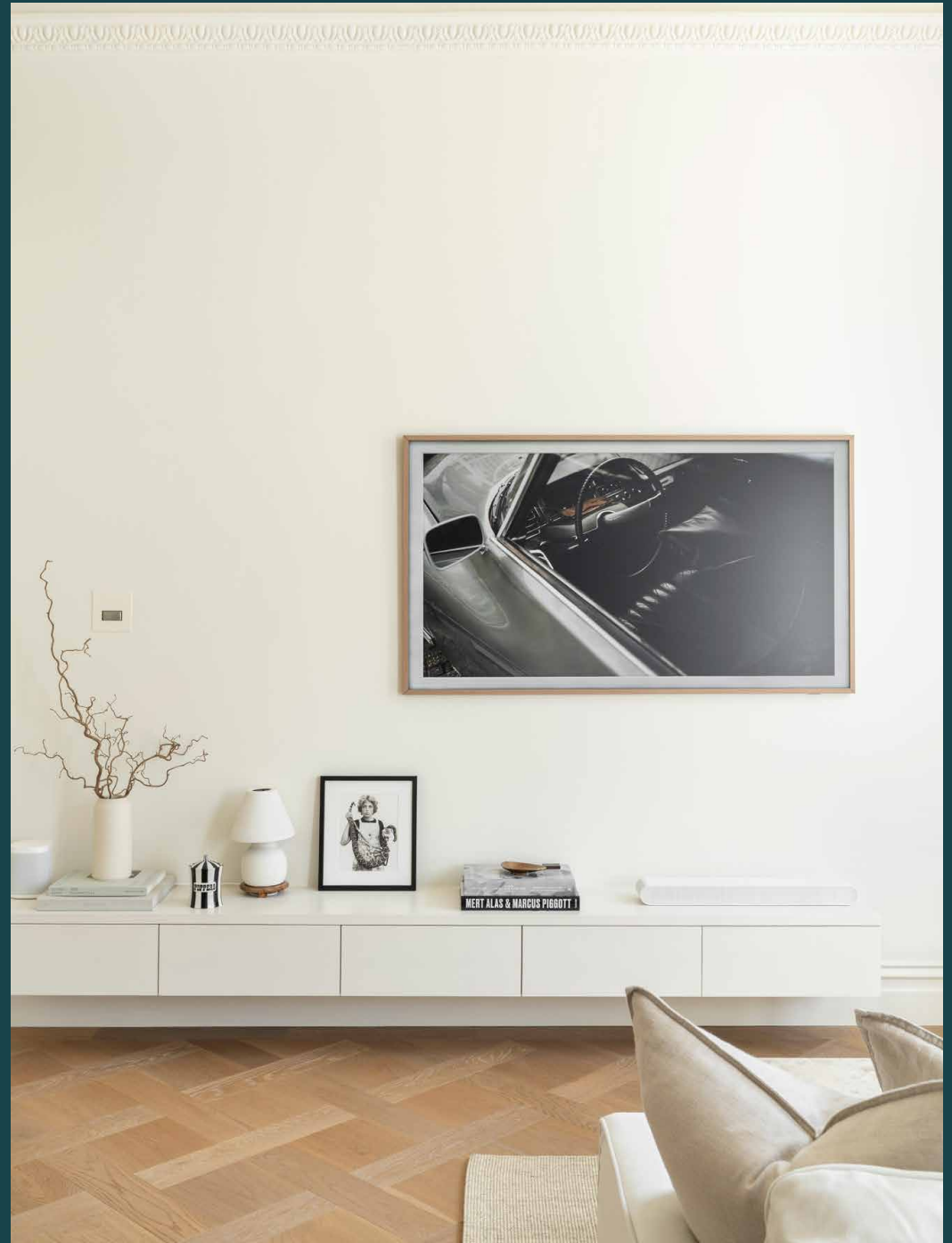


St Stephen's Gardens V

Notting Hill W11

1 Bedroom, 1 Bathroom
For 2 guests





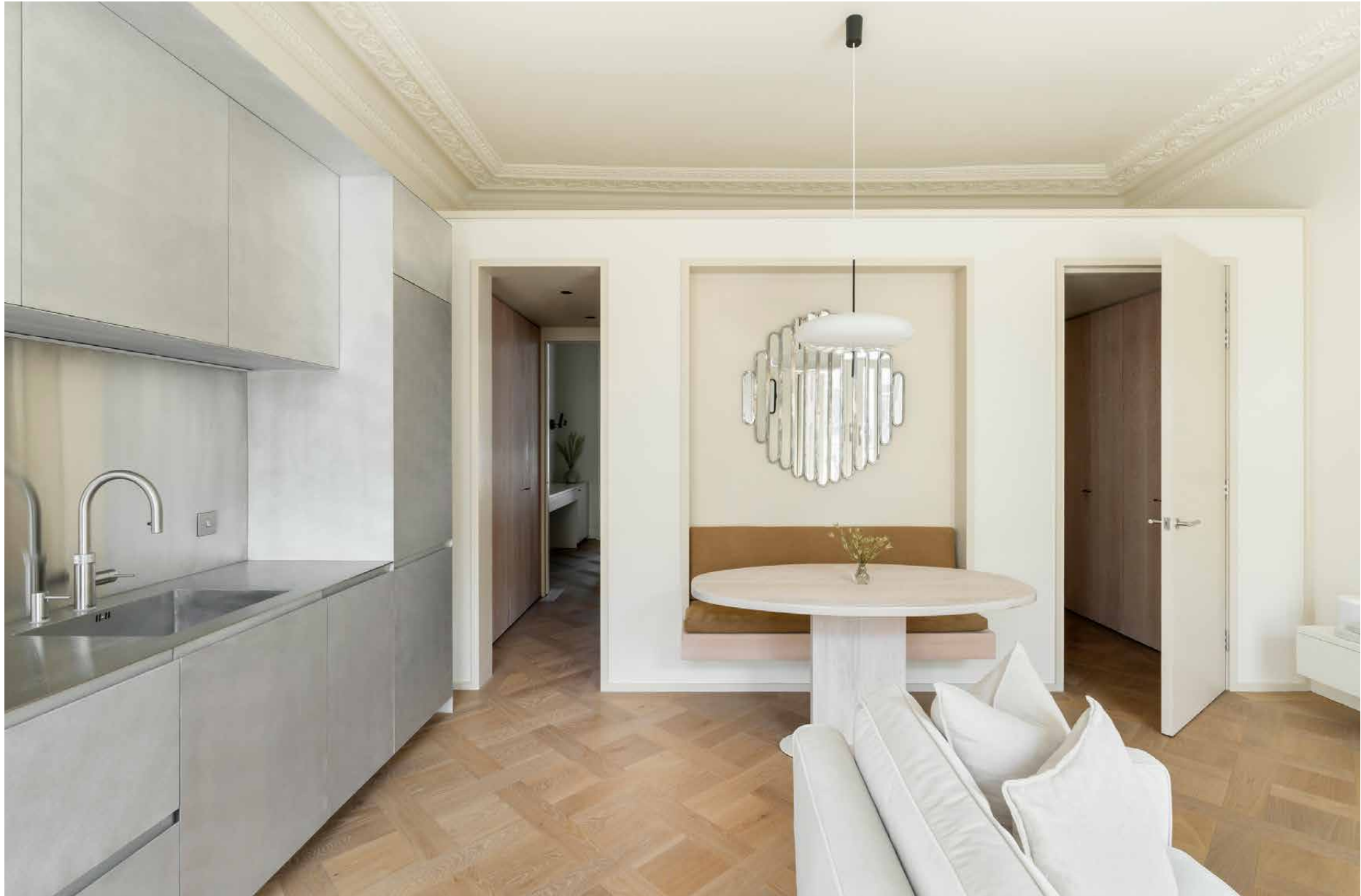
A one-bedroom Notting Hill apartment for rent that elegantly blends period charm with contemporary light-filled living.

Nestled between Notting Hill and Bayswater, this first-floor apartment sits on a picturesque street lined with portico porches and stucco façades. Inside, a refined neutral palette and preserved period detailing create a calm, sophisticated backdrop for everyday.

Natural light pours into the open-plan living space through two sets of French doors, illuminating organic tones and immaculate design. The kitchen – designed by Reform Copenhagen – pairs hand-brushed aluminium cabinetry with stainless steel surfaces, a Quooker tap and integrated Neff appliances, offering both functionality and visual edge. Orluna spotlights and Apparatus sconces add subtle warmth and atmosphere throughout.

Versailles parquet flooring and intricate cornicing root the apartment in its heritage, while industrial-style materials introduce a modern contrast. In the dining area, a custom Edward Collinson table and built-in bench seating sit under a sculptural flying saucer pendant light – a convivial setting for hosting or unwinding. The living area invites relaxation with an expansive cream sofa and a Samsung Frame TV, blending comfort with curated design.

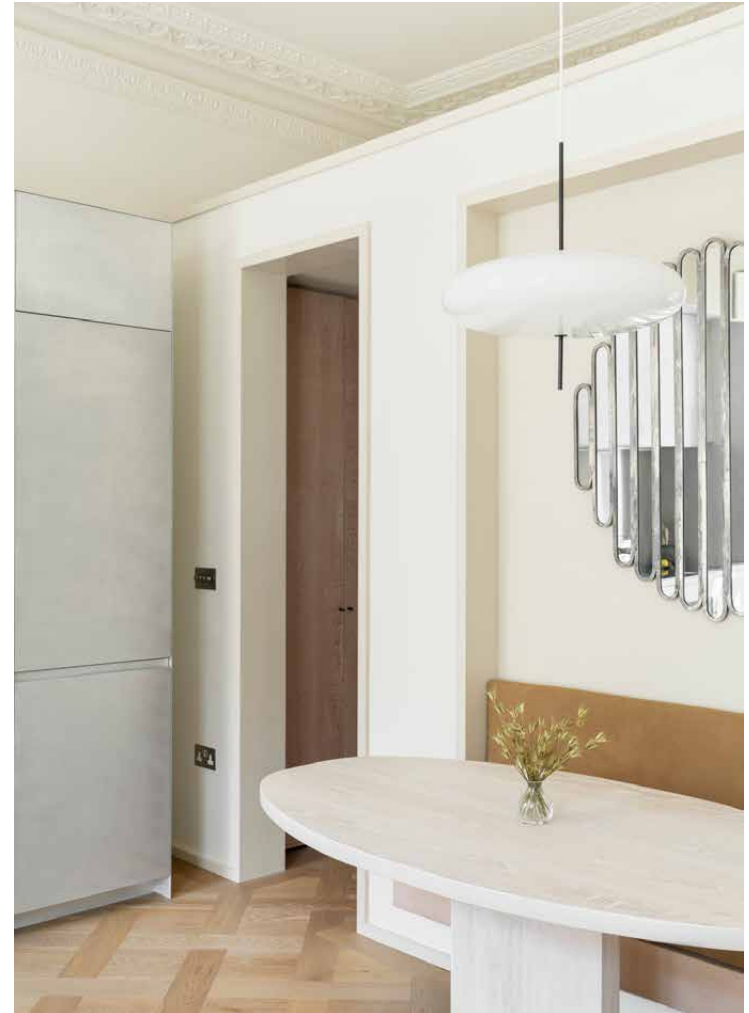




“

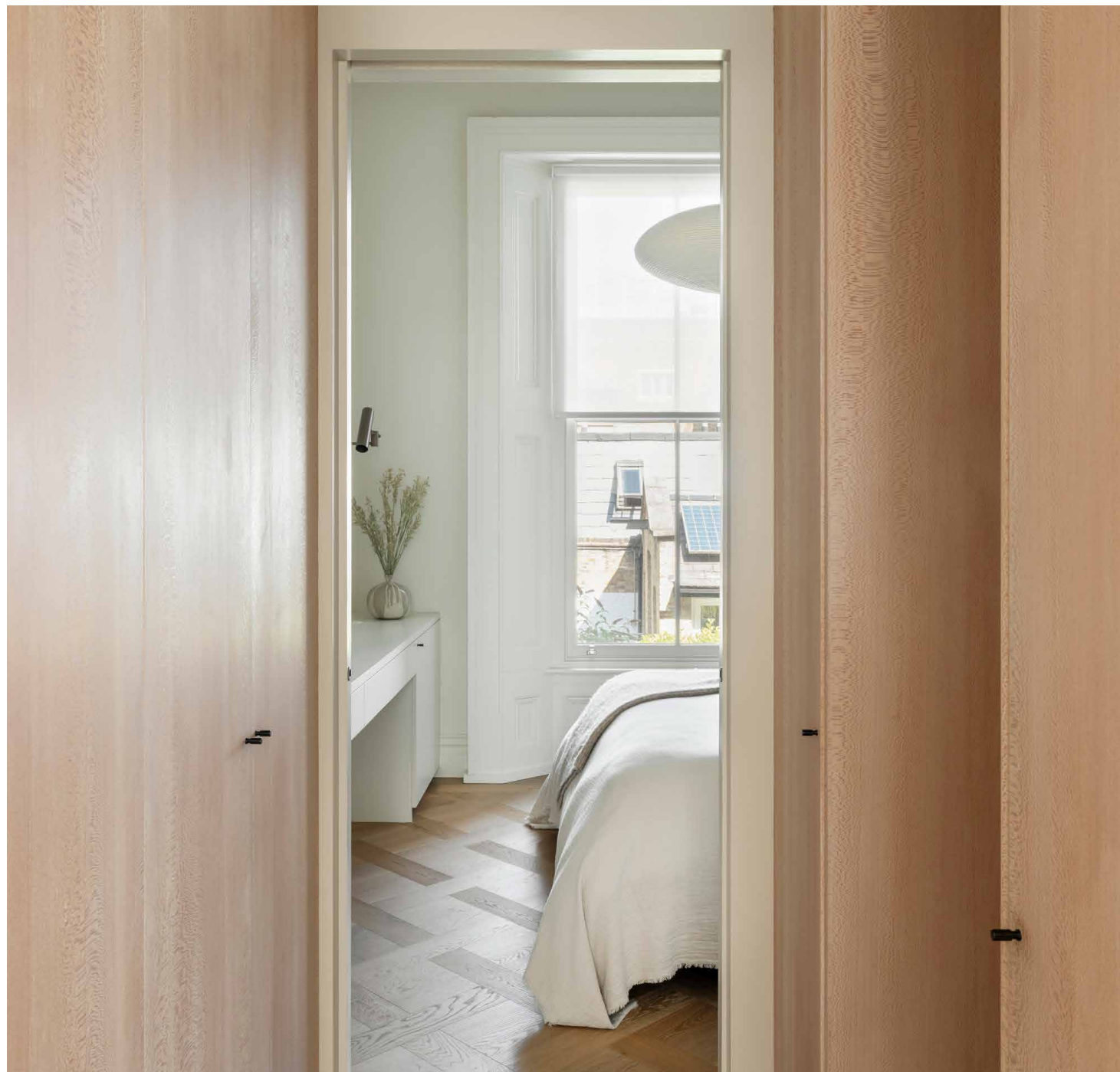
Versailles parquet flooring and intricate cornicing root the apartment in its heritage, while industrial-style materials introduce a modern contrast.





A sense of calm washes over the bedroom. Apparatus lighting illuminates the room, alongside a large sash window. A bank of custom-built wardrobes provides ample storage. The bathroom continues the theme of quiet luxury with its micro-concrete finish, rainfall shower and bespoke Calacatta Viola marble vanity. A narrow, frosted window draws in light from the bedroom, maintaining privacy while enhancing brightness.

French doors extend the living space outdoors, opening onto a cast-iron fronted balcony, with views over the quiet street and leafy St Stephen's Gardens beyond.



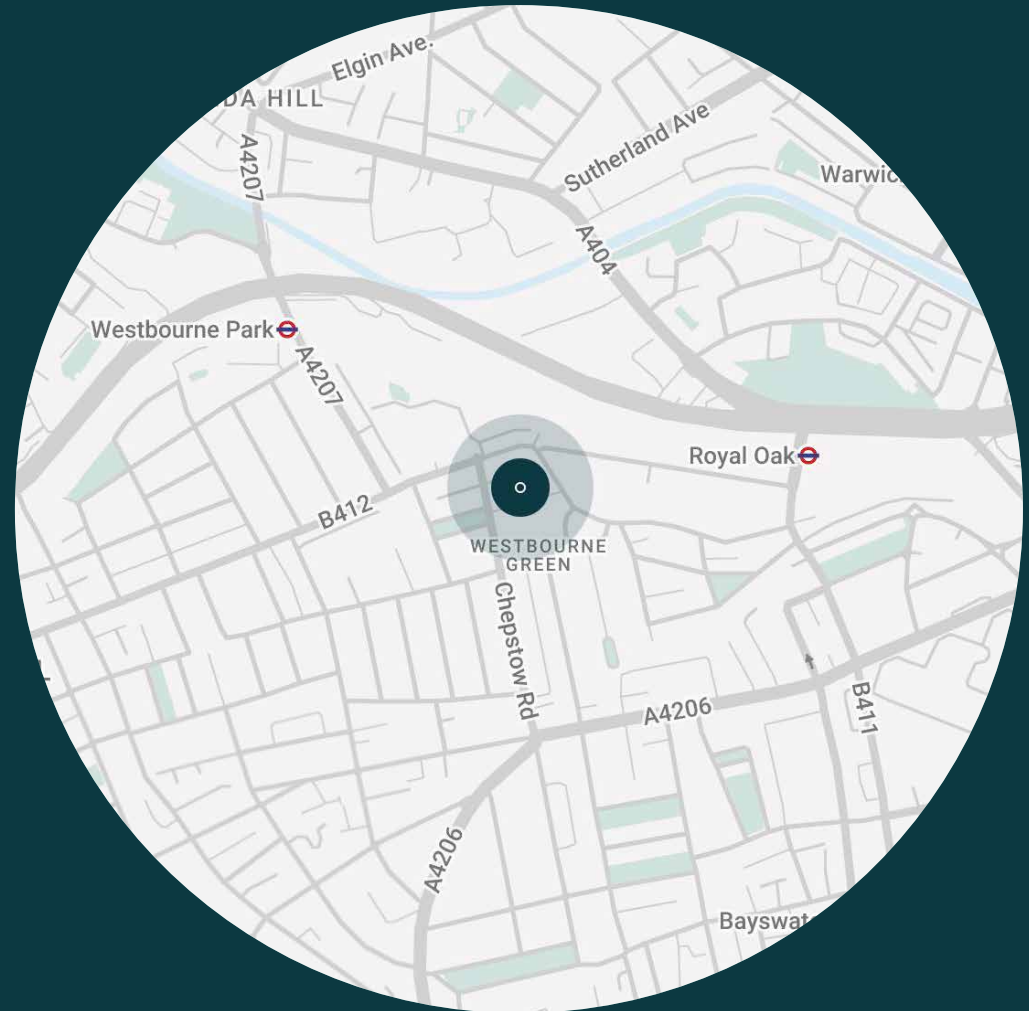




LOCATION

St. Stephens Gardens has a best-of-both-worlds appeal, enjoying the quiet of its residential location, but with fantastic proximity to the rest of Notting Hill.

Just a five-minute walk away, Westbourne Grove is lined with celebrated eateries. Caffeinate at Beam, then work up a sweat with a session at Psycle, before brunch at Granger & Co., or shopping for fresh groceries at Daylesford Organic. For a weekend stroll, wander down to Kensington Gardens and the sprawling lawns of Hyde Park. End the evening with dinner at Gold or Dorian, then head to one of the neighbourhood's most coveted pubs, The Cow, for a nightcap.



PROPERTY HIGHLIGHTS

- Designed in collaboration with Daytrip Studios
- Open-plan kitchen, reception and dining room
- Bedroom with king sized bed Contemporary bathroom
- Private balcony
- Heritage features
- Sash windows and French doors
- City of Westminster





Please don't hesitate to get in touch if you have any questions or require any further information.

hello@domusstay.com

+44 (0)20 8168 8880

Domus Stay provides the perfect combination of property, place and personal service for the world's most remarkable people. If you have any questions, or if we can help in any way, please contact us on the above number. Be it about a property you have, a property you want, dates to check or any special requirements you may need, we'd love a chat.

