

domus
stay.

St Mark's Place

NOTTING HILL W11

2 Bedrooms, 1 Bathrooms
For 4 guests





Large, light-filled spaces and a private terrace set a welcoming scene at this two-bedroom apartment.

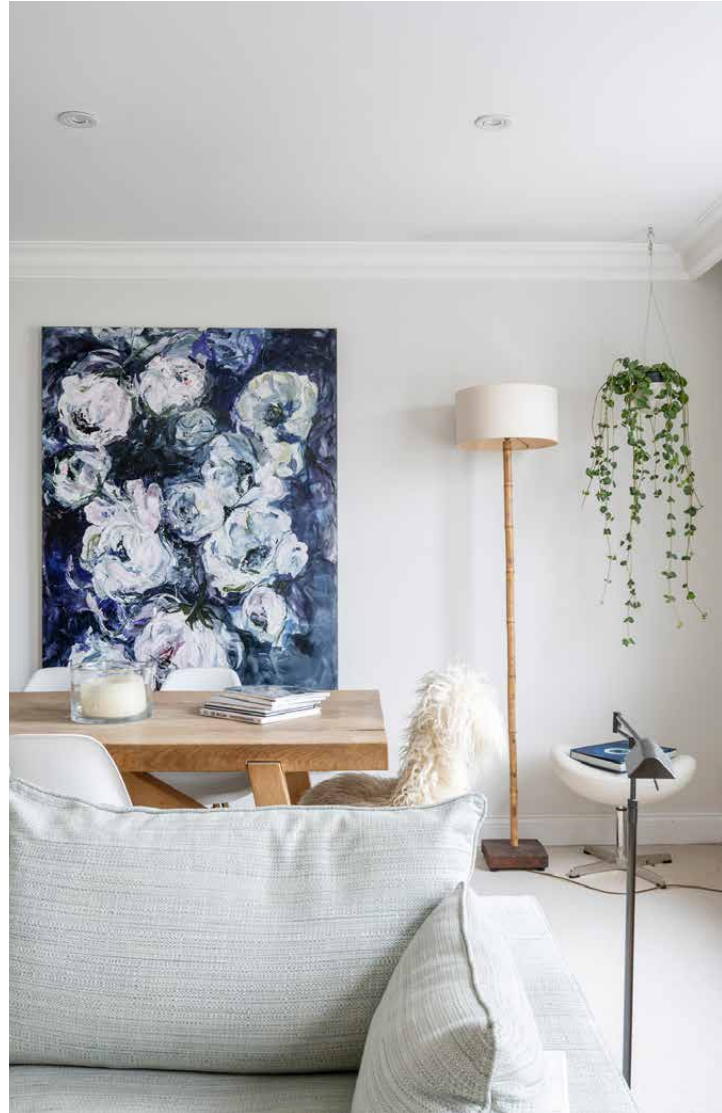
Pared-back design sets a welcoming scene at this Notting Hill apartment, arranged over three floors and within walking distance of Portobello Road. Large, light-filled living spaces, a private terrace and a designated study mean every eventuality is accommodated for here – from hosting to working from home.



The living spaces

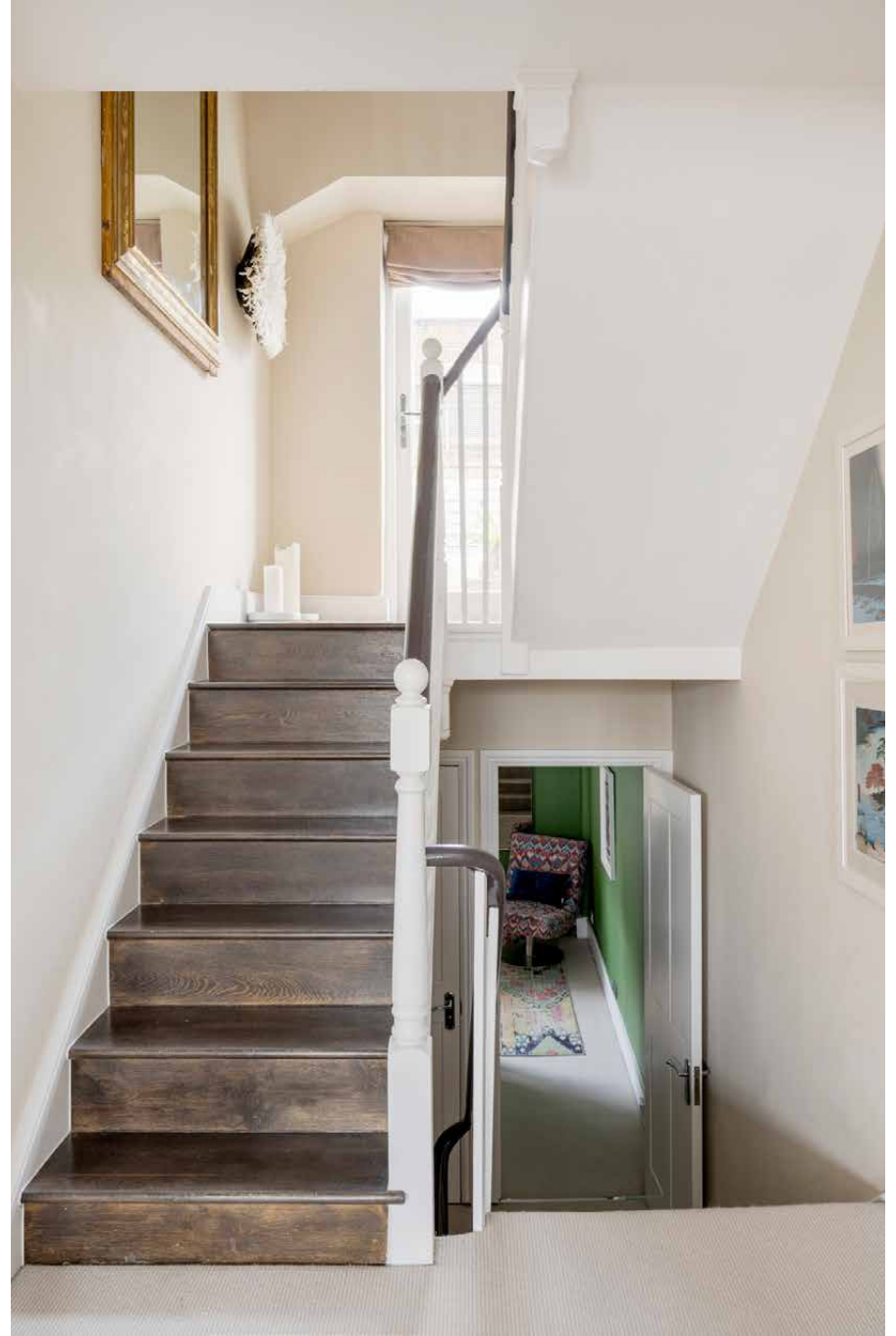
The hub of the home sits on the middle floor, with a quiet study and cloakroom below, and bedrooms and a bathroom above. This sense of separation accentuates the feeling of space and privacy. Two sash windows brighten the open-plan layout, which spans lounging and dining areas. A large wooden table can easily seat six; other seating options include a deep sofa and Arne Jacobsen-inspired egg armchairs positioned in front of the fireplace.

The breakfast bar provides another area to congregate, overlooking the timeless kitchen. A streamlined space to cook, it both looks and acts the part thanks to the abundance of worktop space, storage and high-spec integrated appliances.





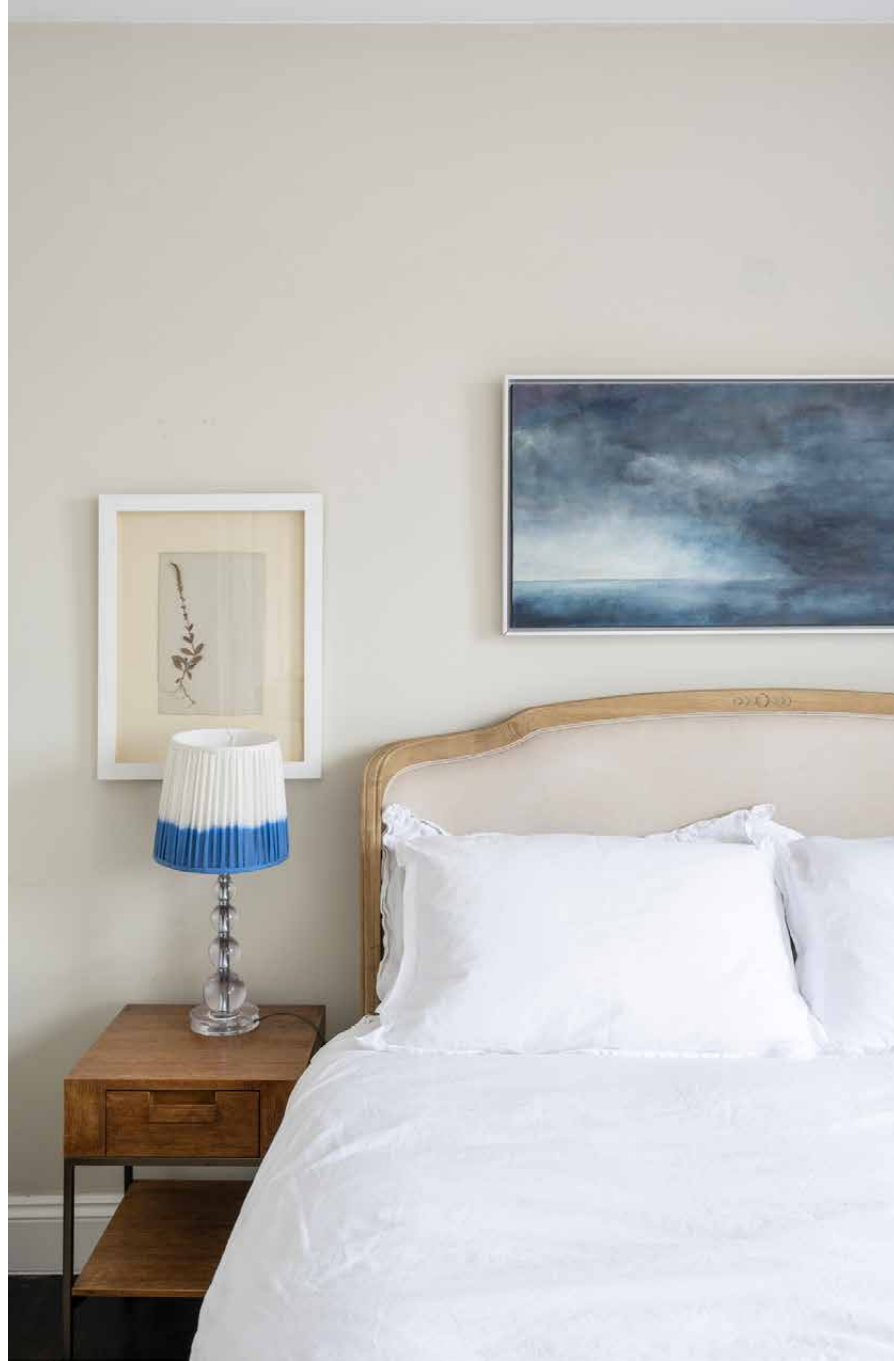






Bedrooms & bathrooms

A final flight of stairs leads to the bedrooms, both of which are styled to soothe. Neutral tones, dark floorboards and wooden furniture add to the laid-back vibe. Fitted wardrobes and access out to a small balcony make the principal particularly inviting. Both bedrooms are served by a polished bathroom, finished with marble tiles and a deep bathtub.





Design details

Throughout, Scandi-style furniture, neutral tones and tactile soft furnishings create a relaxing environment. Period cornicing ensures the heritage heart of the home is not lost.





Outdoor space

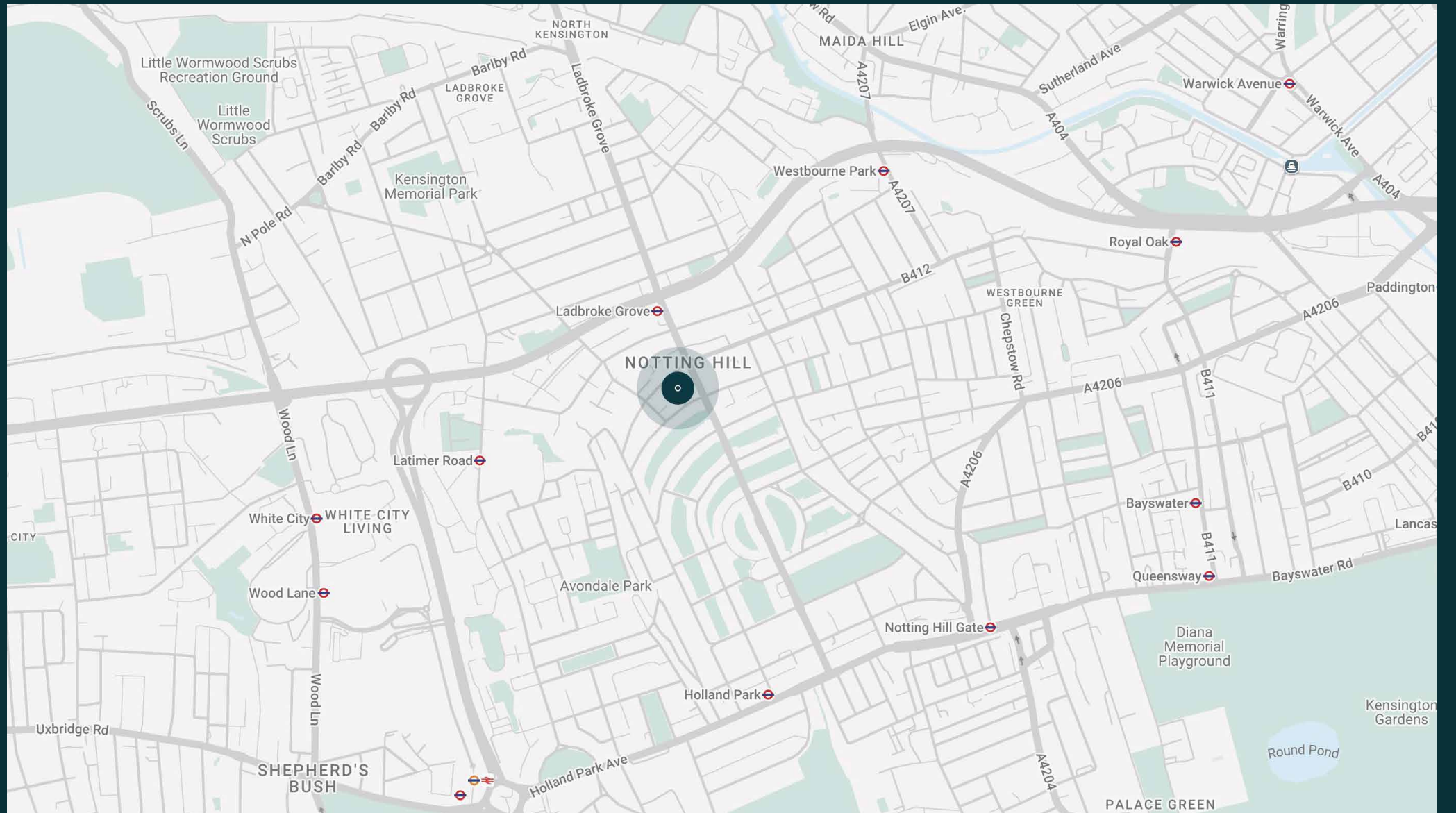
Take the stairs up the terrace – a perfect spot for morning coffee or an aperitif (note the outdoor lights that come in handy after dusk). Screened for privacy, it feels incredibly secluded and comes complete with an outdoor sofa and coffee table.

The neighbourhood

Within walking distance of Portobello Road, this considered two-bedroom apartment provides a calming backdrop for everyday life.

Nearby Portobello Road Market comes alive on the weekend so visit early like the locals do, picking up lunch to go from Buns from Home or It's Bagels. Keep up with your workout routine at Body Works West before stocking up on organic groceries at Daylesford or stopping for coffee at Granger & Co. Come evening, unwind with a drink at The Pelican then catch a film at The Electric Cinema. For special celebrations, Gold is just a short walk away.





Property features

- Open-plan kitchen and reception room
- Principal bedroom
- Two further bedrooms
- Family bathroom
- Cloakroom
- Private terrace
- Royal Borough of Kensington and Chelsea

Approx. 98.8 sq m / 1,063 sq ft



Approx. Gross Internal Area = 1,063 sq ft / 98.8 sq m

Floor plans are for illustrative purposes only and not to scale. Compliant with RICS code of measuring practice.

Guest & concierge services

Our concierge team are here to help guests settle in, seamlessly. Centre court tickets to Wimbledon, Premier League seats with the best views, Savile Row tailors on standby, or a private chef to cater to individual tastes – we aim to elevate every stay.

From the moment of booking with us, each guest has a single point of contact to finesse the details. Our statement spaces are just the starting point – to ensure everyone feels at home, our rates include:

-
- Weekly housekeeping
 - Flexible check-in/out
 - Luxury linens and Bamford toiletries
 - Legal compliance on all our homes
 - A personal welcome and arrival essentials
 - Unlimited access to guest services and tailored experiences
 - Professional inventory inspection before and after every stay
 - Access to a curated portfolio of sole agency properties



domus stay.

Please get in touch if you have any questions
or require any further information.

hello@domusstay.com

+44 (0)20 8168 8880

The property particulars are a guide not statements. Descriptions, photographs, and plans are for guidance only. The Property is offered "subject to contract and references". No warranties, representations, License or Tenancy is given by Domus Stay. Our full disclaimer together with trading names and our Privacy Policy is shown on our website

© Domus Stay 2025. All rights reserved.

