

domus
stay.

St Charles Square

NOTTING HILL W10

2 Bedrooms, 1 Bathroom
For 3 guests





A period footprint uplifted with contemporary design, this lateral apartment is stylish and serene.

Outside, St Charles Square bears all the hallmarks of its period pedigree. Inside, find a two-bedroom apartment reimagined with timeless style for the modern urban dweller.

The living space

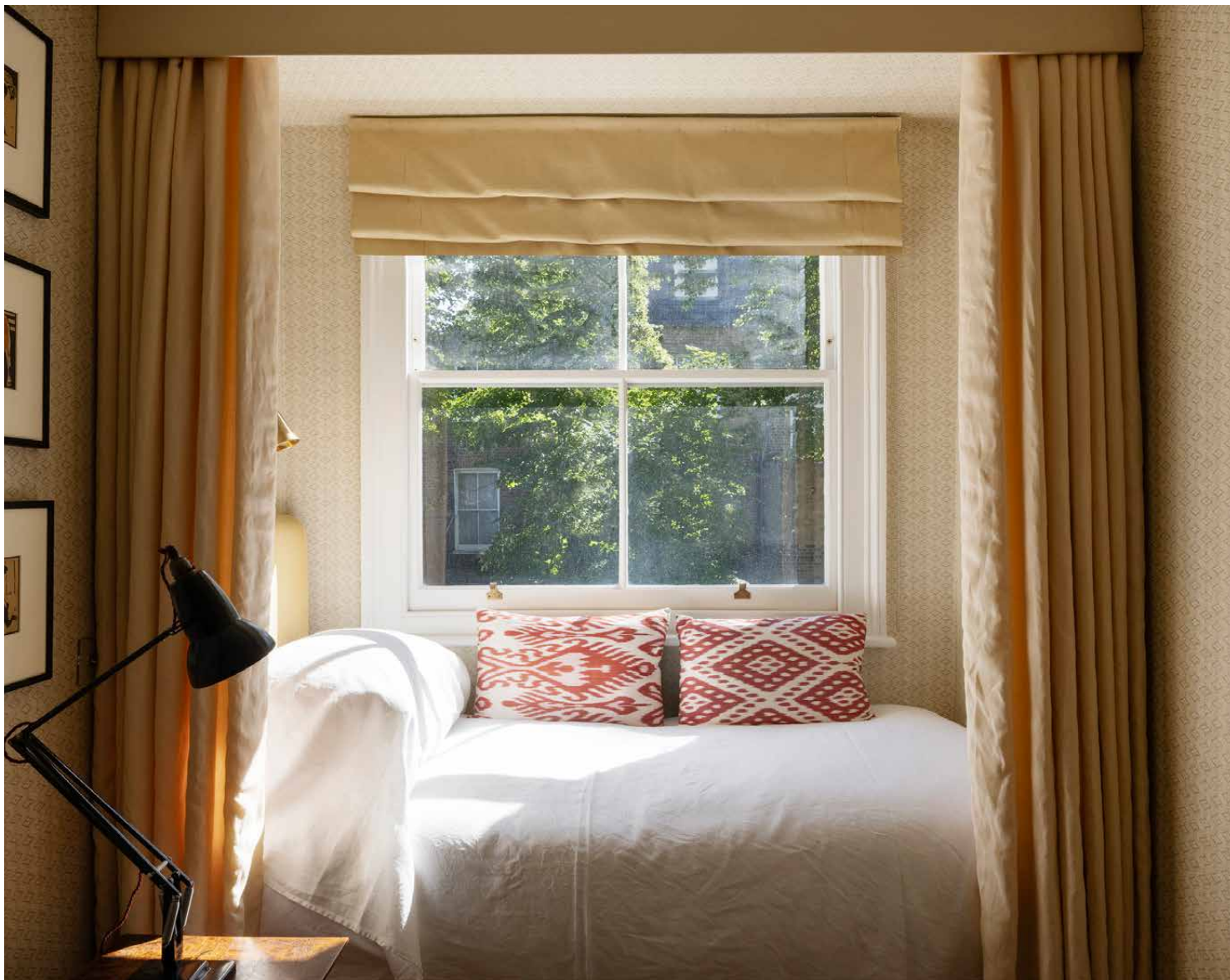
All welcoming warm tones and reams of light, there's an inviting quality to the social hub thanks to the experts at Raw Interiors. A dialogue between the old and new, heritage features – a sleek marble fireplace, high ceilings and sash windows – converse with mid-century dining chairs by W. H. Klein for Bramin, an Italian chandelier and relaxed tuxedo sofa.

Flawless finishes are indicative of the precision taken in the home's design; note the built-in green marble bar – a stylish corner for cocktail creativity. Cook up a storm in the kitchen, where white Marlborough Tiles and Belgian blue limestone counter tops are sleek and streamlined. A state-of-the-art Devialet sound system sets the scene for evening dinner parties.









Bedrooms & bathrooms

Soft hues lend a serene atmosphere to the sleeping quarters – each bedroom a tranquil place to press pause. Expect timeless minimalism in the principal bedroom, complete with a floor-to-ceiling wardrobe and Howe London cherry bedside tables. In the bathroom next door, dusty pink Tadelakt walls contrast with marble floors and gilded faucets. A cosy guest bedroom is wrapped in Robert Kime wallpaper.





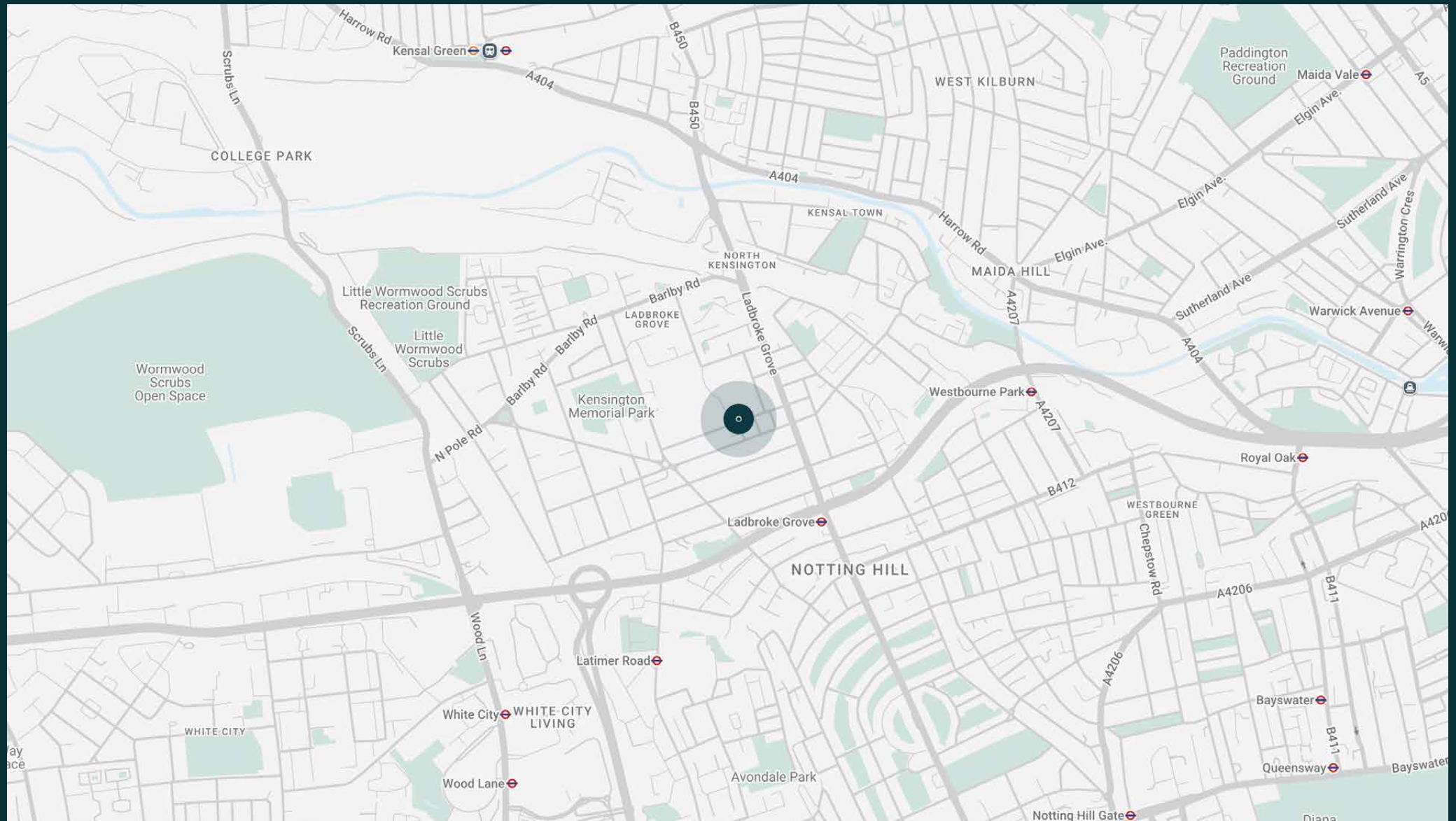
“Dusty pink Tadelakt walls contrast with marble floors and gilded faucets.”

The neighbourhood

There's a welcoming, community feel to North Kensington, where the streets are lined with period architecture and leafy trees.

A short walk takes you to Golborne Road, characterised by its friendly local spirit and wealth of boutiques and eateries. If you find yourself there in the morning, pick up a coffee and pastel de nata from the coveted Lisboa Patisserie before browsing the vintage stalls of the market; for evening ventures, book a dinner at one of Layla's Bakery's supper clubs or head to the Elgin for a drink. Wormwood Scrubs for a breath of fresh air, tennis and picnics. With Latimer Road and Ladbroke Grove stations close by, there's easy access into the city and beyond.





Property features

- Bright dining and reception room
- Contemporary kitchen
- Principal bedroom
- Guest bedroom
- Family bathroom

Approx. 56.7 sq m / 610 sq ft



Approx. Gross Internal Area = 610 sq ft / 56.7 sq m

Floor plans are for illustrative purposes only and not to scale. Compliant with RICS code of measuring practice.
Prepared for Domus Stay. Copyright © All Rights Reserved.

Guest & concierge services

Our concierge team are here to help guests settle in, seamlessly. Centre court tickets to Wimbledon, Premier League seats with the best views, Savile Row tailors on standby, or a private chef to cater to individual tastes – we aim to elevate every stay.

From the moment of booking with us, each guest has a single point of contact to finesse the details. Our statement spaces are just the starting point – to ensure everyone feels at home, our rates include:

-
- Weekly housekeeping
 - Flexible check-in/out
 - Luxury linens and Bamford toiletries
 - Legal compliance on all our homes
 - A personal welcome and arrival essentials
 - Unlimited access to guest services and tailored experiences
 - Professional inventory inspection before and after every stay
 - Access to a curated portfolio of sole agency properties





Please get in touch if you have any questions
or require any further information.

hello@domusstay.com

+44 (0)20 8168 8880

The property particulars are a guide not statements. Descriptions, photographs, and plans are for guidance only. The Property is offered "subject to contract and references". No warranties, representations, License or Tenancy is given by Domus Stay. Our full disclaimer together with trading names and our Privacy Policy is shown on our website

© Domus Stay 2025. All rights reserved.

