

domus
stay.

Rosewood Hall

THE COTSWOLDS & COUNTRY

5 Bedrooms, 4 Bathrooms
For 10 guests





Set within one of the Cotswolds' most breathtaking valleys, this Georgian manor rises from the verdant beech woods with quiet grandeur.

As featured in Condé Nast Traveller, it's easy to see why this house captures the essence of country life.

Immortalised by Laurie Lee in *Cider with Rosie*, this valley is one of the Cotswolds' most treasured landscapes. Inside this expertly-refurbished manor house, expect quintessential country-pile interiors and award-winning gardens that bring you into deep harmony with nature.

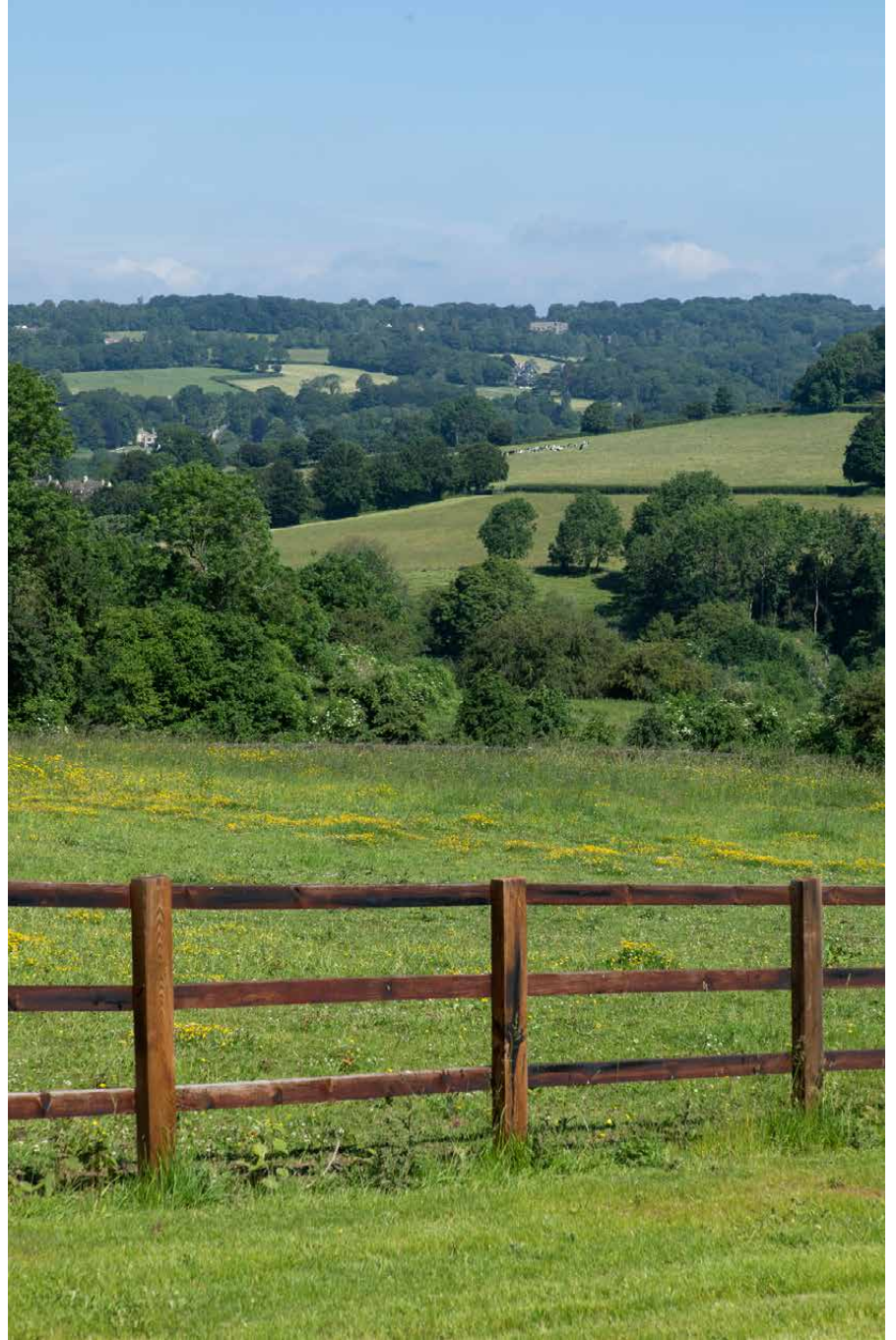


Outdoor space

Beyond the house lie award-winning gardens and wildflower meadows, designed by Graduate Gardens and recognised with a BALI National Landscape award. Terraced lawns and rolling hills wrap the property in uninterrupted greenery, while the heated swimming pool sits by a low brick wall – its position granting sweeping views down the valley. Sun loungers are ready for warm-weather idling, while a croquet lawn and all-weather tennis court invite more energetic pursuits.









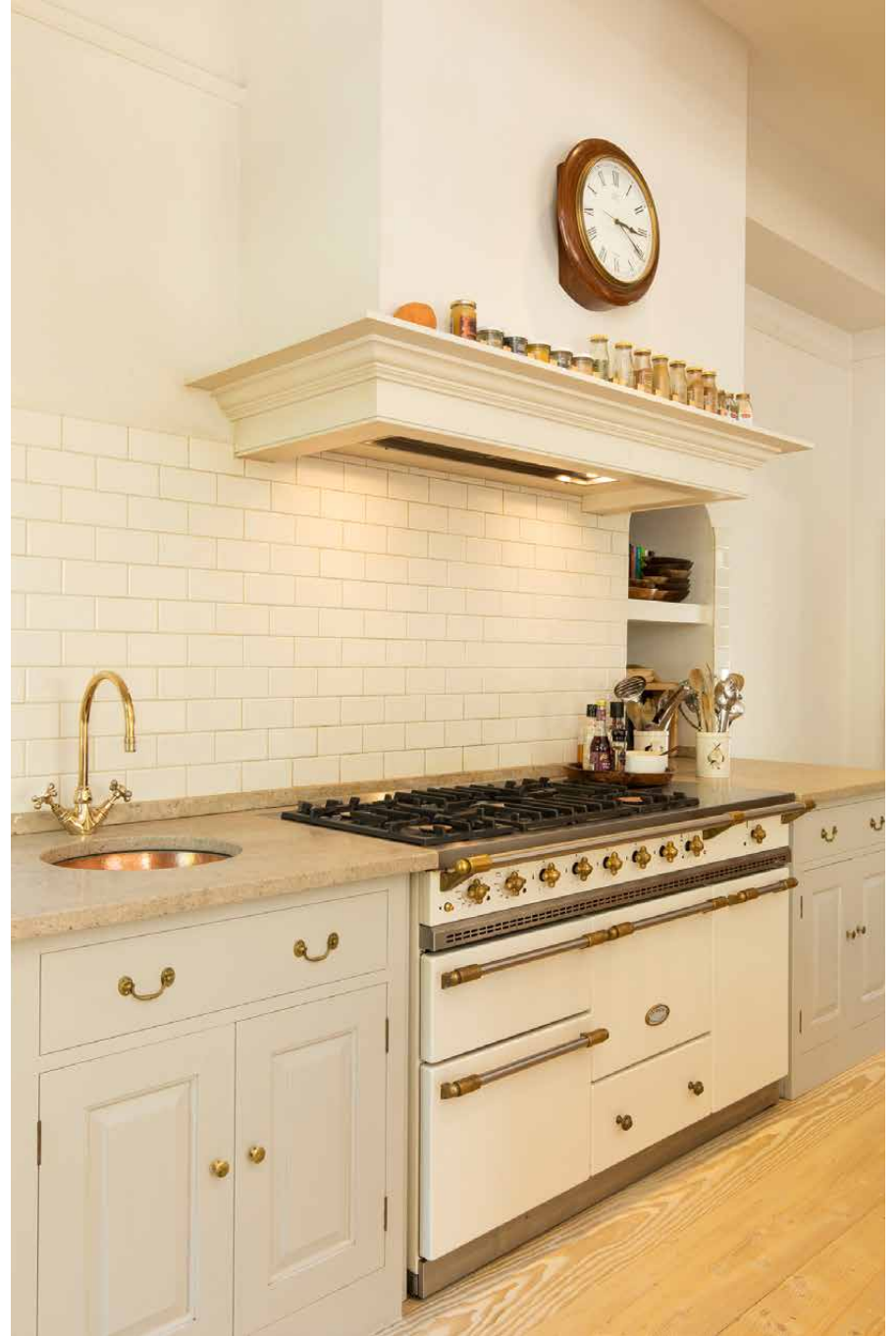




Kitchen & dining

Classic lines meet contemporary craftsmanship in the Plain English kitchen. A large timber-topped island anchors the space, surrounded by pale shaker cabinetry and a Lacanche range oven. Double doors open to the glass-wrapped conservatory dining room; breakfasts drift into long lunches here, framed by leafy views and shifting daylight. There's also a separate, more formal dining room, with a dark wood table backdropped by painted paneling.



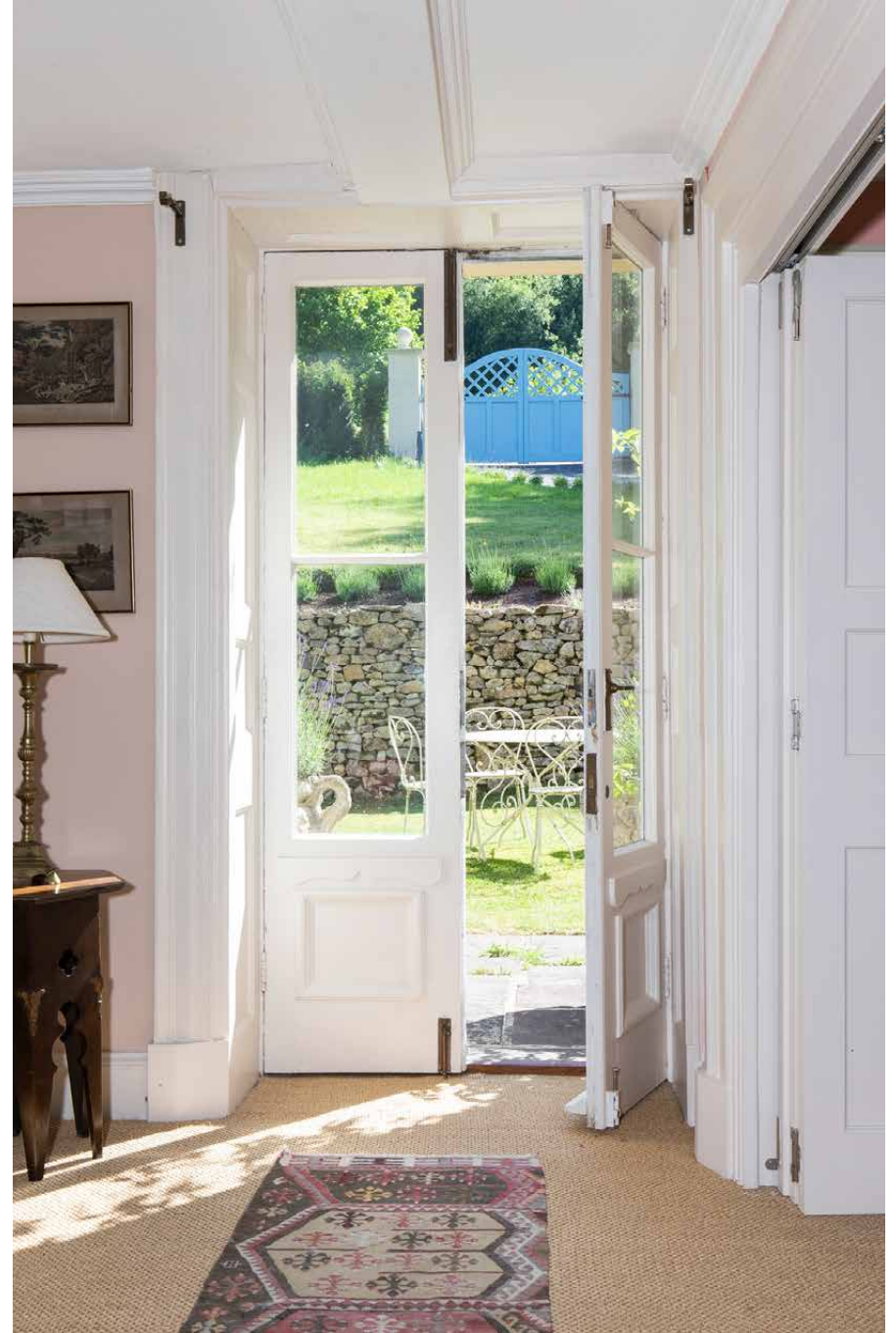






The living spaces

Classic lines meet contemporary craftsmanship in the Plain English kitchen. A large timber-topped island anchors the space, surrounded by pale shaker cabinetry and a Lacanche range oven. Double doors open to the glass-wrapped conservatory dining room; breakfasts drift into long lunches here, framed by leafy views and shifting daylight. There's also a separate, more formal dining room, with a dark wood table backdropped by painted paneling.





Bedrooms & bathrooms

Each bedroom has its own distinct character, shaped by bright patterns, bold artwork and carefully chosen furniture. Sash windows usher in generous natural light, giving every room an uplifting feel.

The principal suite is especially inviting: a generous footprint leads from the elegant bed, past full-height curtains, to a freestanding bathtub positioned by the window – so you can bathe and enjoy the views. One of the guest bedrooms enjoys its own en suite, while the remaining three share two thoughtfully-designed bathrooms.











The surroundings

Immortalised by Laurie Lee in *Cider with Rosie*, this corner of the Cotswolds remains one of its most cherished landscapes. Step outside and join the Cotswold or Wysis Ways, where miles of footpaths thread through woodland, meadows and gentle hilltops. The nearby village of Slad is a pocket-sized gem, its beloved Woolpack Inn serving excellent pub fare with views rolling across the valley. A little further on, Nailsworth offers a cluster of independent shops and cafés, including the much-loved Wild Garlic restaurant – perfect for long, lazy lunches after a walk.

For a change of pace, head into Stroud for its vibrant independent scene and the celebrated weekend farmers' market, or catch the glamorous Giffords Circus when it sweeps into town. Make your way to Minchinhampton, where the wide-open Common – often shared with grazing cattle – invites slow, scenic rambles. Golfers can head straight to the renowned course nearby. Browse antiques in Tetbury, or wander Cirencester's handsome streets, teahouses and lively markets – before heading into Cheltenham for the racecourse or fine dining at Michelin-starred Le Champignon Sauvage.



Rosewood
Hall
(DRIVING TIMES)

- 30MINS
- 25MINS
- 20MINS
- 15MINS
- 10MINS
- 5MINS
- 5MINS
- 10MINS
- 15MINS
- 20MINS
- 25MINS
- 30MINS

CHEDWORTH
ROMAN VILLA

COTSWOLDS
COUNTRY PARK

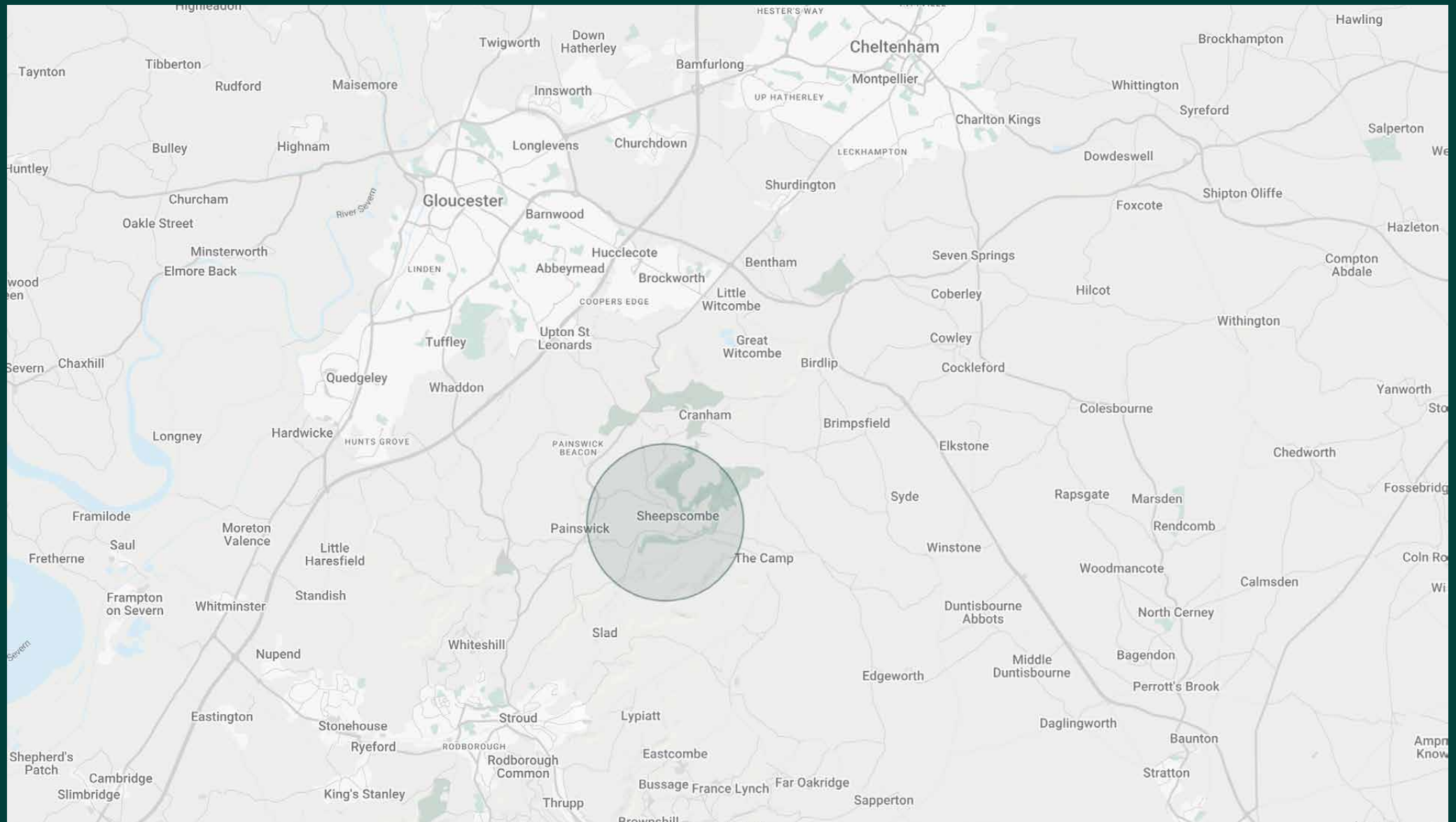
CHELtenham
RACECOURSE

GLOUCESTER

STROUD

COTSWOLDS
AIRPORT





Property features

- Open-plan kitchen and breakfast room
- Conservatory dining room
- Double reception room
- Cinema room
- Principal bedroom suite
- Guest bedroom suite
- Three further bedrooms
- Two further bathrooms
- Heated swimming pool
- Croquet lawn
- All-weather tennis court
- Three bay garage and stable

What's included?

Personal check-in

Possibility for on-site staff, in separate newly refurbished

Customisable amenities and activities available to add



Guest & concierge services

Tennis coach or yoga instructor. Tables at renowned dining institutions, tickets to sporting or music events, and tours of the surrounding countryside: we're here to ensure stays are nothing short of exceptional. Working alongside our carefully selected partners, we put tastemakers and health and wellbeing experts at our guests' fingertips.

Our statement spaces are just the starting point – to ensure everyone feels at home, our rates include:

-
- Housekeeping
 - Flexible check-in/out
 - Luxury linens and toiletries
 - Legal compliance on all our homes
 - A personal welcome and arrival essentials
 - Unlimited access to guest services and tailored experiences
 - Professional inspection before and after every stay
 - Complete discretion



domus stay.

Please get in touch if you have any questions
or require any further information.

hello@domusstay.com

+44 (0)20 8168 8880

The property particulars are a guide not statements. Descriptions, photographs, and plans are for guidance only. The Property is offered "subject to contract and references". No warranties, representations, License or Tenancy is given by Domus Stay. Our full disclaimer together with trading names and our Privacy Policy is shown on our website

© Domus Stay 2025. All rights reserved.

