

domus
stay.

Rose Cottage

THE COTSWOLDS & COUNTRY

5 Bedrooms, 5 Bathrooms
For 10 guests





In the picturesque village of Taynton, this chocolate box cottage to rent leans into the serenity of the landscape.

Rose Cottage is textbook Cotswolds. Foliage climbs its golden façade, box ball bushes dot the garden and quiet walking trails unravel metres from the front door.

The sense of calm is palpable – with open fires, cocooning upholstery and vivid green backdrops that emulate the surroundings. It's a home for all seasons, too; winter evenings in the atmospheric snug melt into summer gatherings in the orangery.

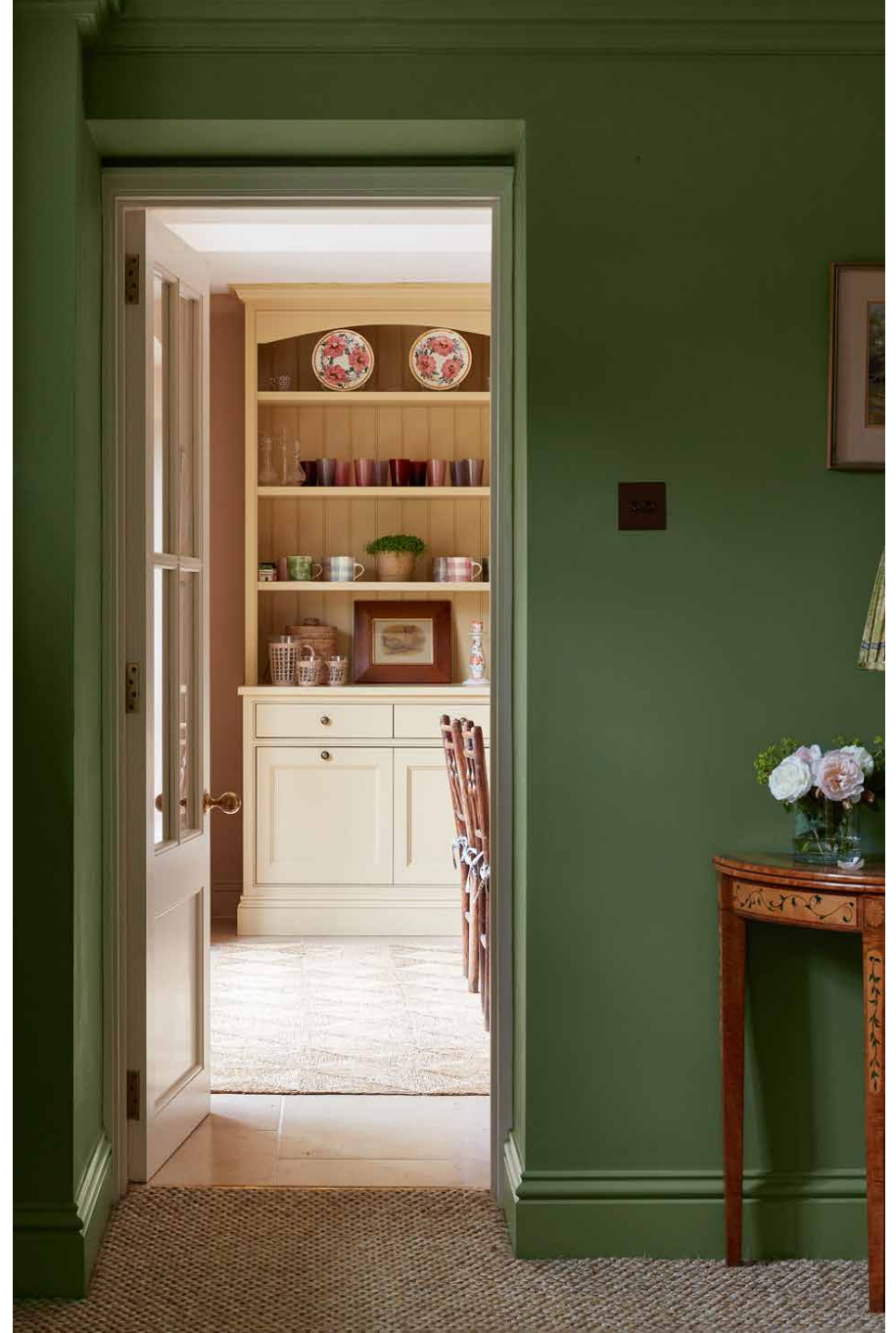




The living spaces

The quiet drama of the setting seeps inside here. In the main living room, halcyon green walls feel deeply soothing and in sync with the rolling countryside. Maximalism guides the design: jute rugs that are tactile underfoot, plush sofas deep enough to sink into, and heavy handmade curtains – every detail emanates warmth. Reading lamps, bold artwork and ample seating make this as much a space for escapism as gathering. A separate snug is cosier – and tailored for entertaining, with wood panelled walls, patterned armchairs and a built-in bar.





Kitchen & dining

The eat-in kitchen is classic countryside. Plaster-toned shaker units, a dresser and flagstones floors lean traditional without compromising contemporary practicality. Integrated appliances cover all culinary bases, while a central breakfast table is a natural gravitation point for informal meals. Celebrations and special occasions call for the orangery. Orientated to catch the light and capitalise on the setting, its glass framework frames peaceful garden views. Doors open to greet the greenery in warmer months; a large dining table seats a crowd year-round.

Elsewhere, other communal spaces are attuned to rural living – from the wide entrance hallway to the flagstone floor, butler sink and wide shelving in the generous boot room.



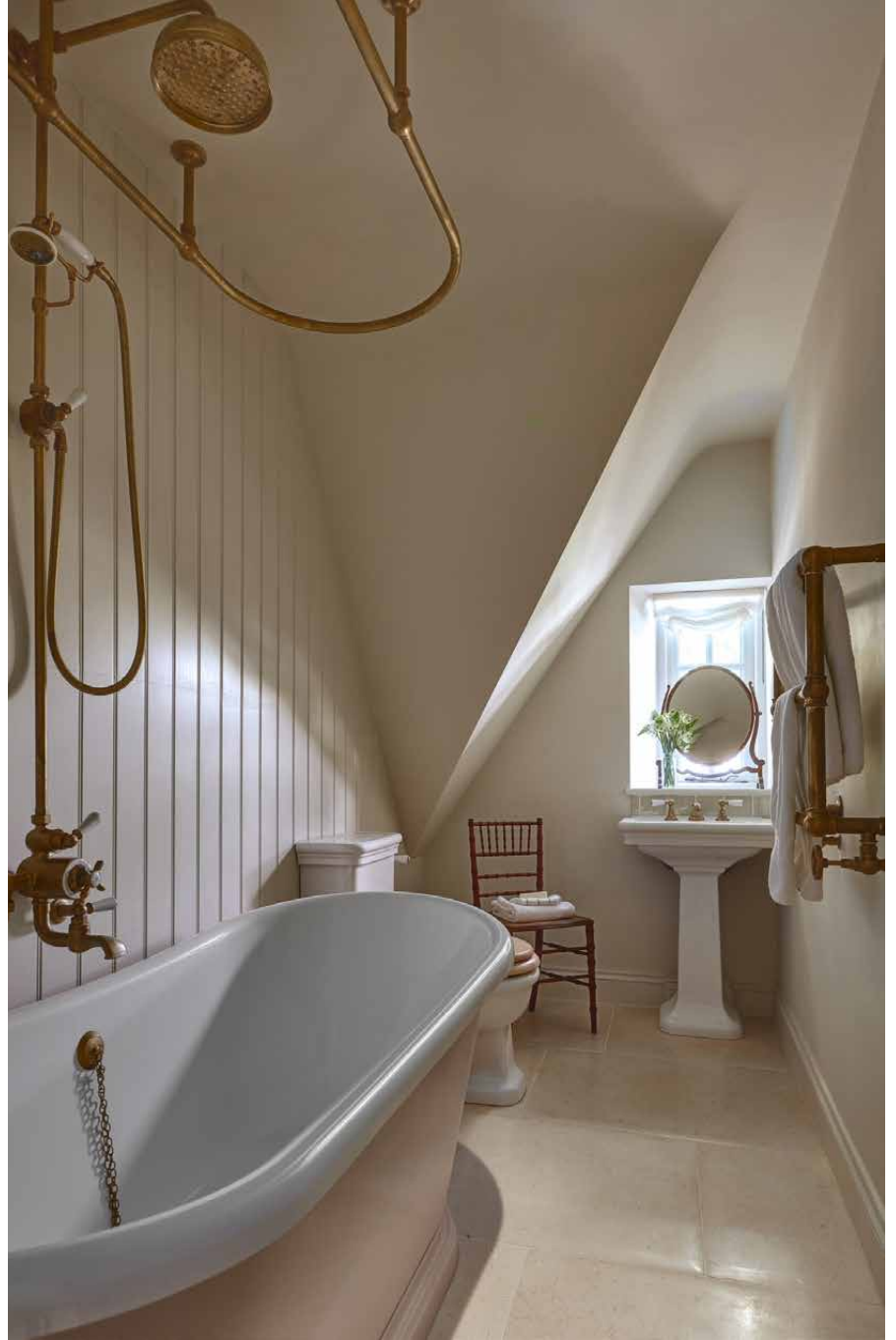






Bedrooms & bathrooms

Like the rest of the house, bedrooms are primed for comfort: all tactile carpets, thick drapes and upholstered headboards. Calming pink and green tones cocoon both the principal suite and a guest room, finished with a canopy and a rural outlook. Two further bedrooms are found in the main cottage: a wallpaper-wrapped twin and a children's bedroom that features two sets of playful bunk beds in blue-green hues. Bathrooms hint at opulence – think deep rolltop baths, burnished brass fixtures and huge walk-in showers.











The annexe

Only a few steps away from the cottage, a self-contained annexe is poised for extended family members, complete with its own convenient kitchenette. A restful bedroom suite is carved into the eaves, where curtains separate the sleeping quarters from a rolltop bath. Charming inside and out, it opens out to a circular paved seating area with a firepit.



Outdoor space

Encircled by garden, privacy and peace prevail at Rose Cottage. Alongside the lawn and well-maintained flower beds, find a table to seat eight and a pizza oven primed for alfresco nights. There's also a double garage.





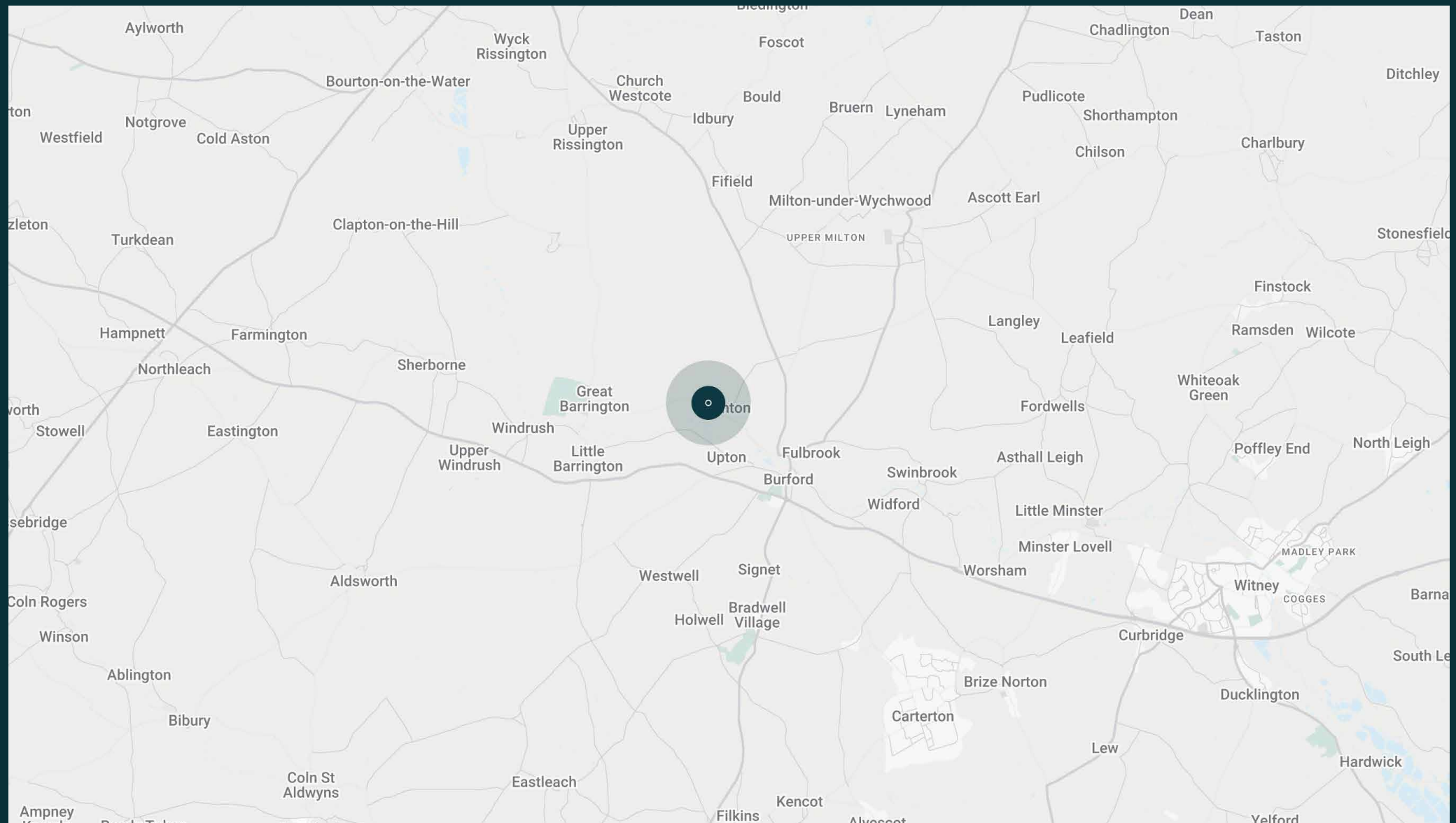
The surroundings

Situated just outside the vibrant town of Burford, Rose Cottage is an unrivalled base for excellent pubs, hikes and rural exploration. Quaint villages, grand manor houses and historic landmarks are minutes away by car, although nothing beats the feeling of getting lost on foot. Not to be missed – the Taynton circular walk starts in the village itself, steering you through rolling countryside, pastures and woodland, while other routes border meadows, riversides and quiet hamlets. Days move to a slow pace; start with a round of golf at the Burford Golf Club, followed by farm-to-table lunches at Daylesford Organic before spending the evening locally at the Bull in Burford or The Lamb Inn.

Travel times (by car):

- Daylesford - 8 mins
- Burford - 5 mins





Property features

- Charming cottage in quiet village
- Atmospheric living room with open fire
- Kitchen and breakfast room
- Orangery with garden views
- Snug
- Principal bedroom suite
- Two guest bedroom suites
- Kids bedroom
- Self-contained annex with kitchenette
- Pizza oven and outdoor dining table
- Double garage

What's included?

A self-contained annex, ideal for children or staff
Housekeeping services and private chef by arrangement
Access to full concierge services



Guest & concierge services

Tennis coach or yoga instructor. Tables at renowned dining institutions, tickets to sporting or music events, and tours of the surrounding countryside: we're here to ensure stays are nothing short of exceptional. Working alongside our carefully selected partners, we put tastemakers and health and wellbeing experts at our guests' fingertips.

Our statement spaces are just the starting point – to ensure everyone feels at home, our rates include:

-
- Housekeeping
 - Flexible check-in/out
 - Luxury linens and toiletries
 - Legal compliance on all our homes
 - A personal welcome and arrival essentials
 - Unlimited access to guest services and tailored experiences
 - Professional inspection before and after every stay
 - Complete discretion





Please get in touch if you have any questions
or require any further information.

hello@domusstay.com

+44 (0)20 8168 8880

The property particulars are a guide not statements. Descriptions, photographs, and plans are for guidance only. The Property is offered "subject to contract and references". No warranties, representations, License or Tenancy is given by Domus Stay. Our full disclaimer together with trading names and our Privacy Policy is shown on our website

© Domus Stay 2025. All rights reserved.

