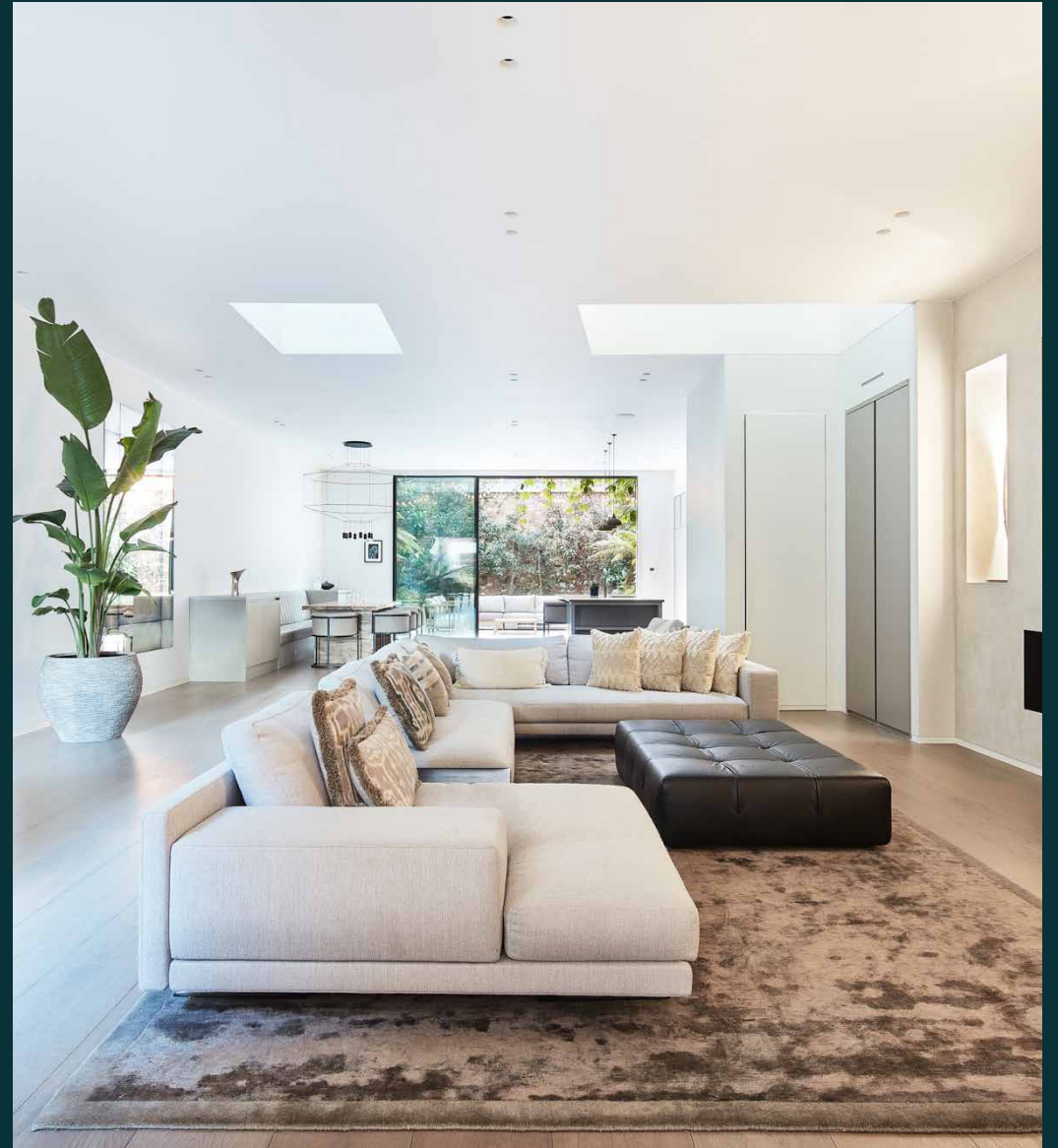


domus
stay.

Rede Place

NOTTING HILL

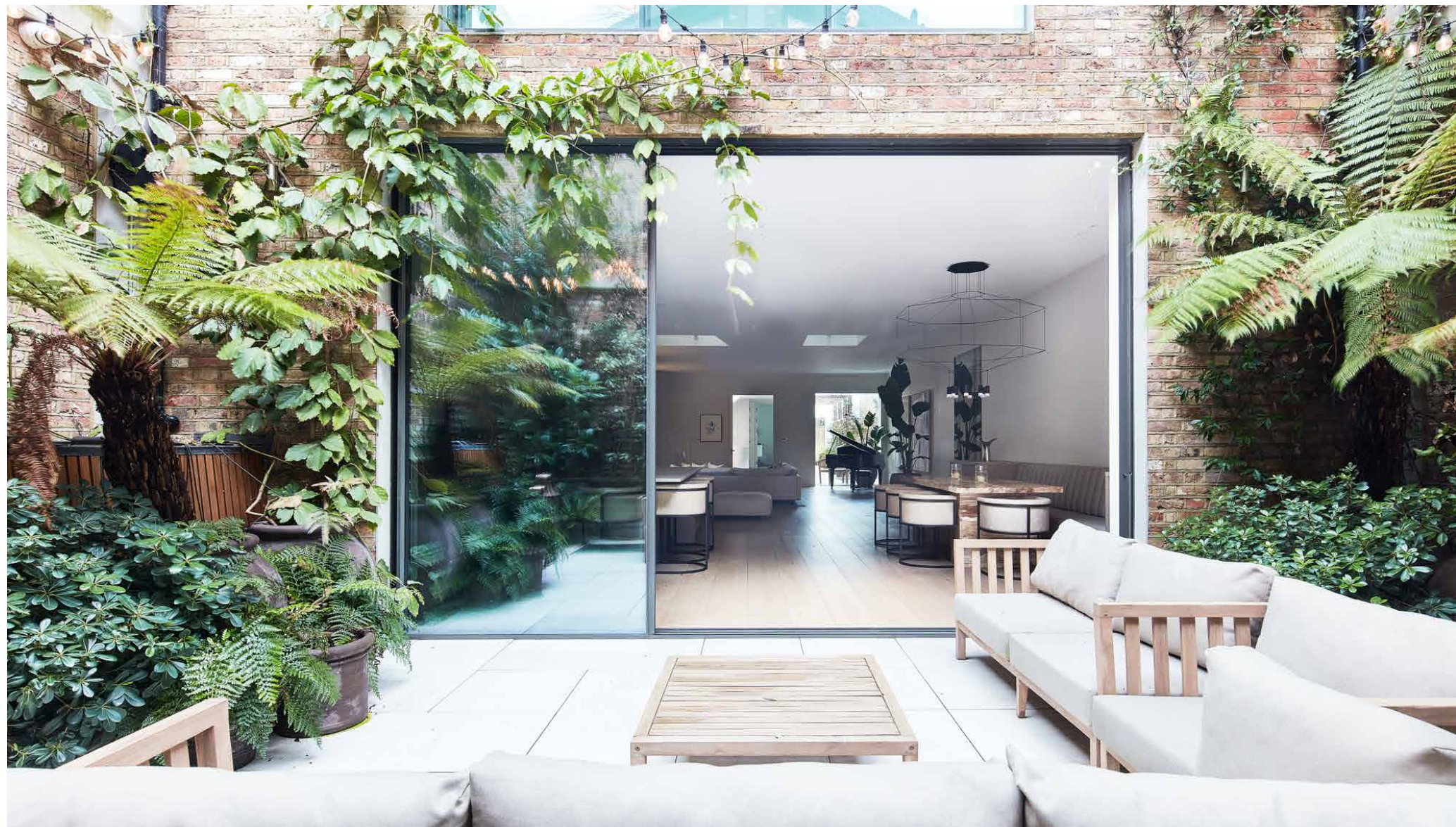
6 Bedrooms, 7 Bathrooms
For 12 guests





A gallery of contemporary design. In Notting Hill, this short-term rental house is an inspiring canvas for modern living.

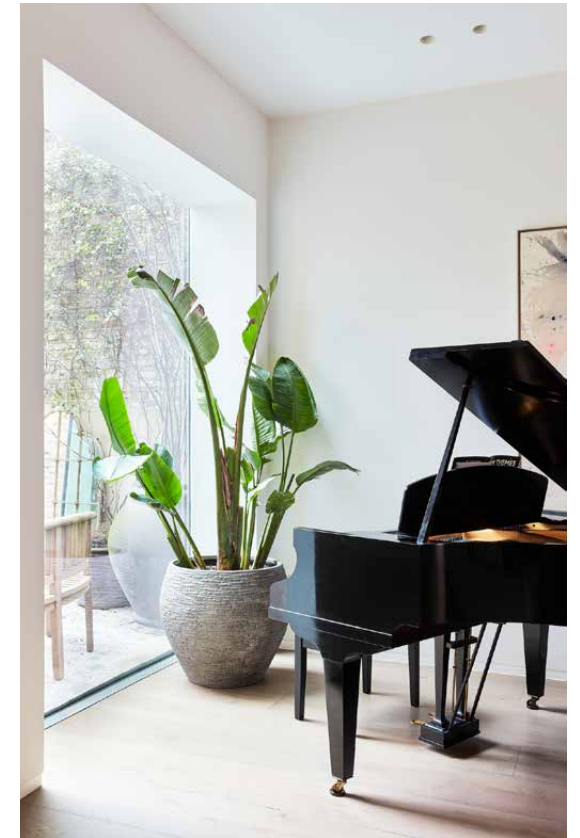
Tucked away on a former mews lane, pioneering design is sewn into the framework of this six-bedroom home by 23 Architecture. Behind its brick façade, period bones have been reimagined with luxury interventions across five floors – all connected by an inspiring helical staircase. Alongside cutting edge design: a swimming pool, high-spec sauna and gym.



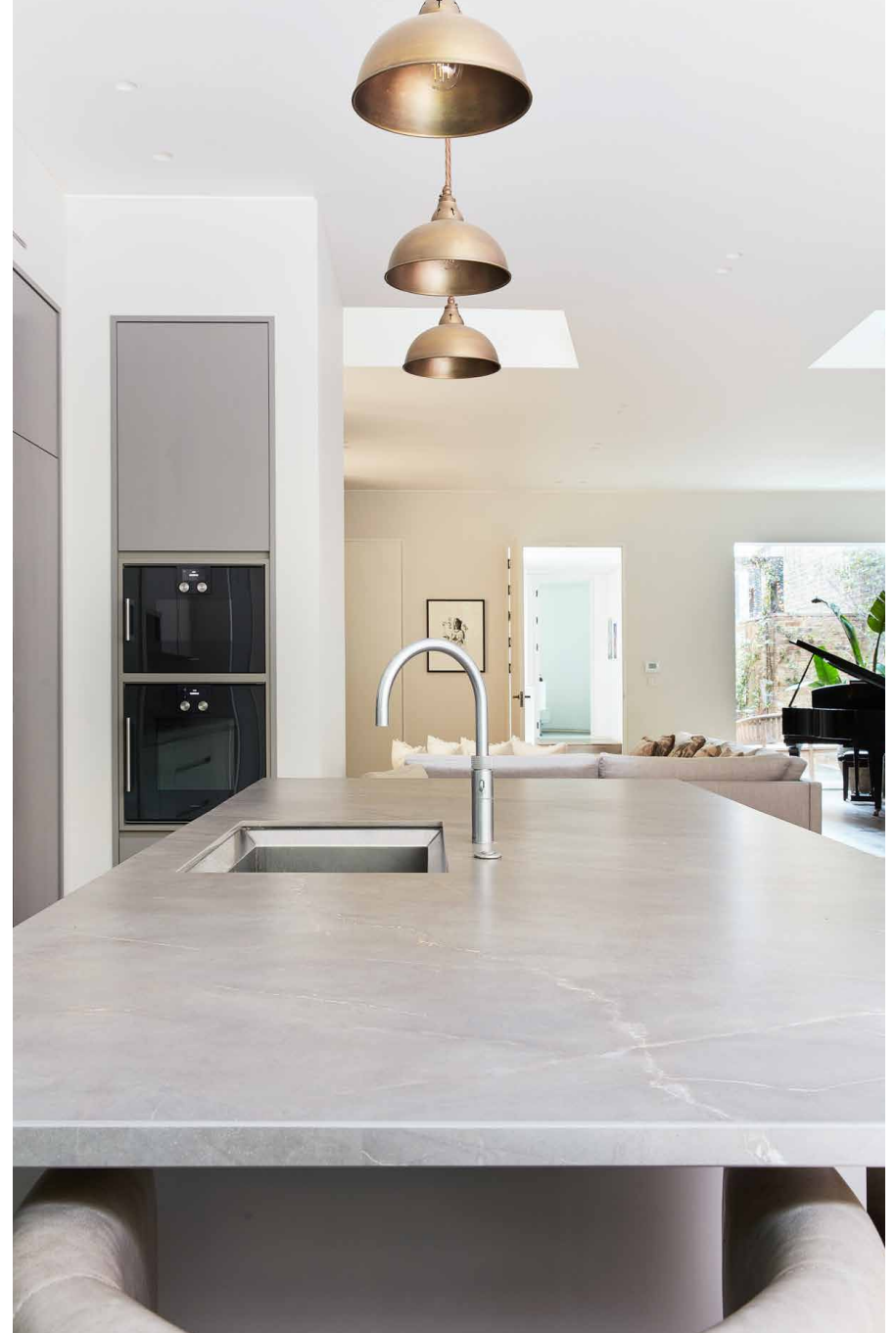


The living spaces

A picturesque cobbled pathway makes for an inviting entrance into the property. The open-plan kitchen, dining and reception room is awe-inspiring in scale and style. A refined interior palette of hardwood floors and pale walls are illuminated through skylights and floor-to-ceiling dual aspect glazing. Modish furnishings delineate the space; an L-shaped sofa and grand piano around the contemporary fireplace, a marble dining table with banquette seating and a state-of-the-art kitchen with Gaggenau appliances. There's a seamlessness drawn to the garden through the full height sliding doors. With soaring brick walls and an array of plants, it's a private urban oasis suited for entertaining in sunny climes.







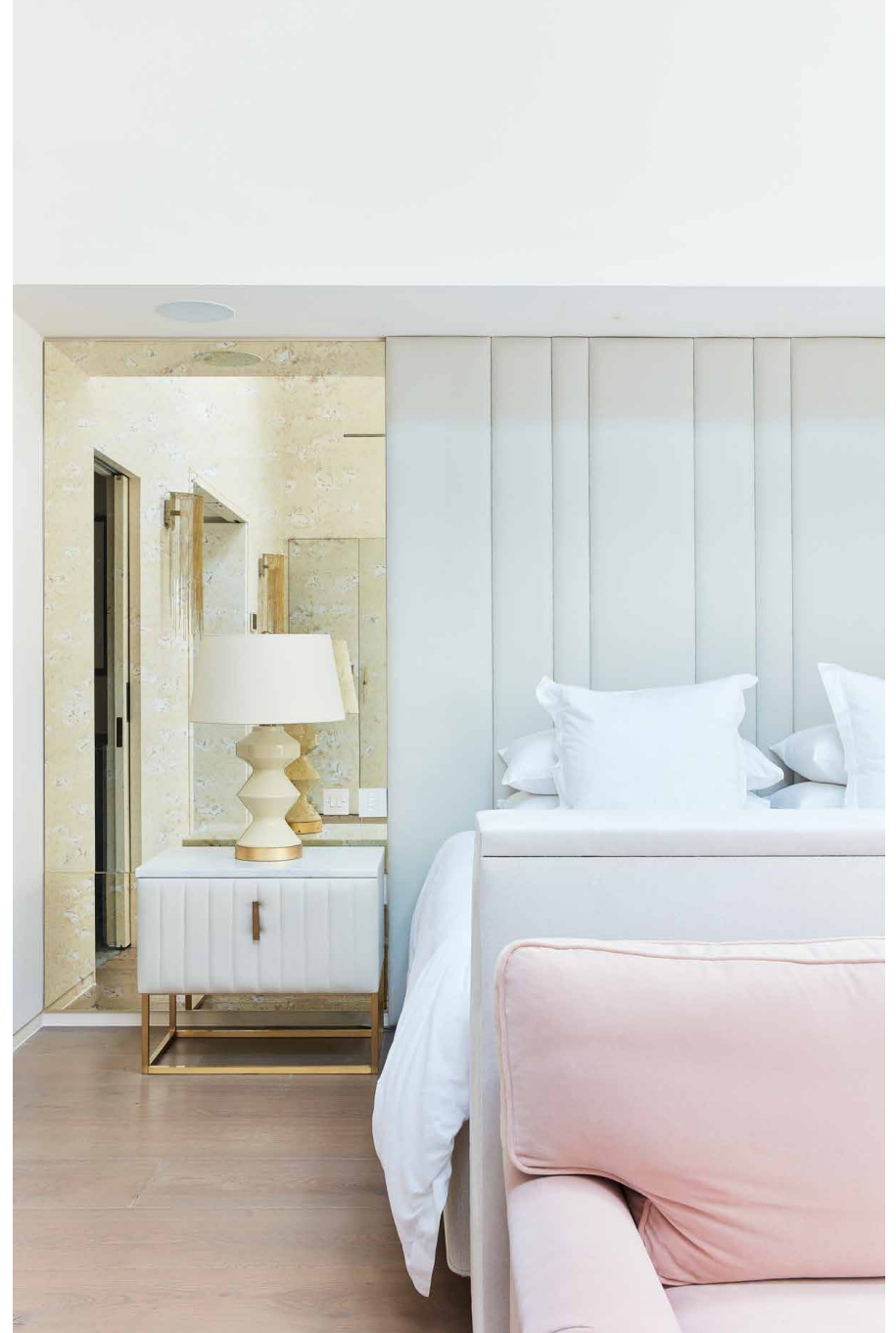




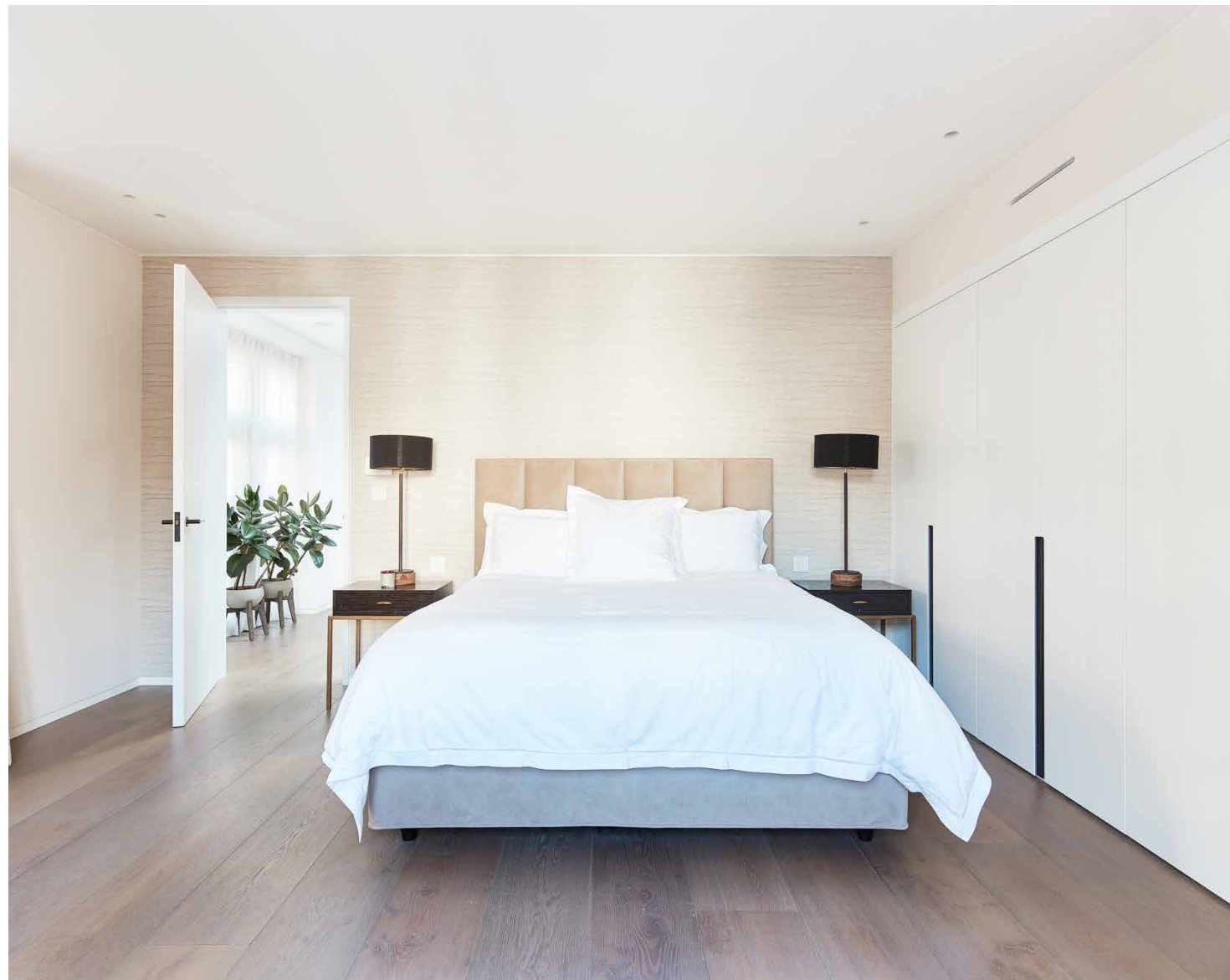


Bedrooms & bathrooms

The home's haute interiors and spacious proportions ensue in the air-conditioned bedrooms, spread across the upper two levels. The principal bedroom suite has an immense sense of volume, courtesy of a double-height vaulted ceiling – neatly engineered with skylights. To one side of the room, a sliding door reveals a dressing room. To the other, an en suite bathroom pairs glossy marble walls with oversized tiles, setting a stylish scene for the deep-seated bath and frameless shower.



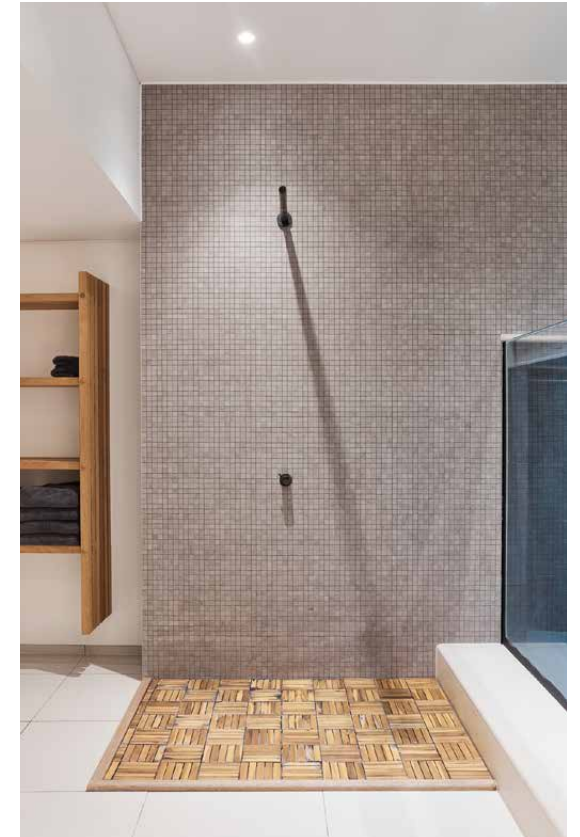
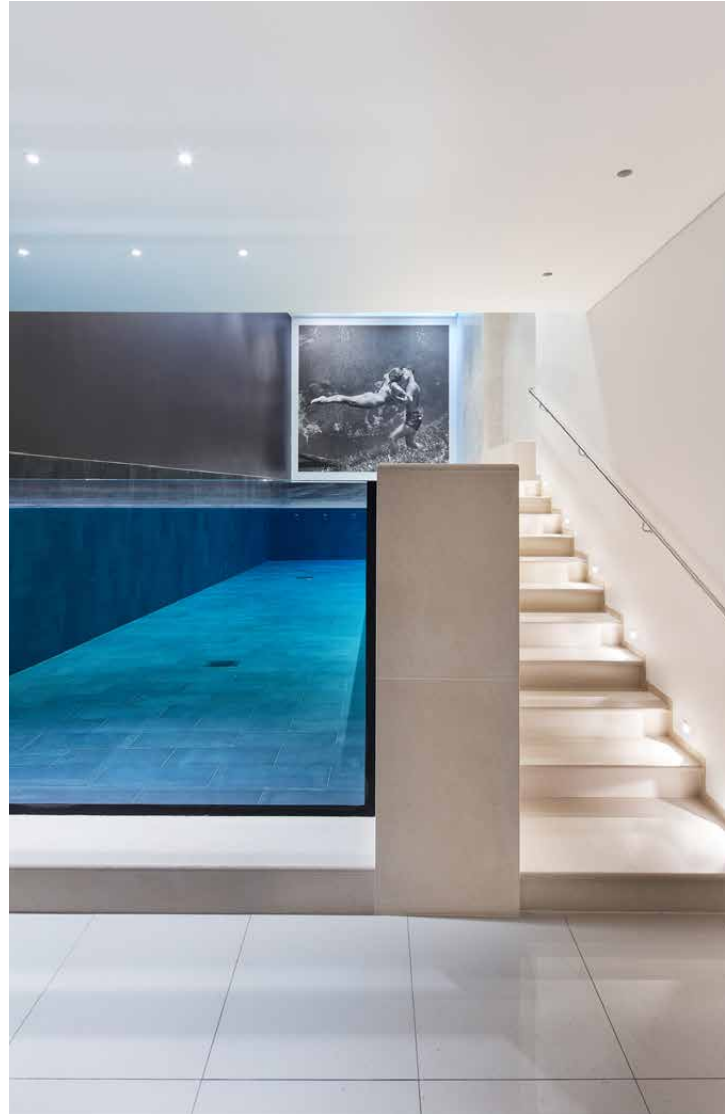
Also occupying the first floor are three immaculate guest bedroom suites, each with fitted wardrobes and swathes of natural light. An additional bedroom and study space can be found at the top of the home, with skylights affording an uplifting character. On the ground floor, a self-contained one-bedroom studio can be used as staff or guest accommodation.





Wellness at home

Family life continues on the lower-ground floor, where a living area, games room and home bar are dramatically finished with dark tones and spot lighting. Underfloor heating keeps the setting cosy, a feature that runs throughout the home. Luxe sofas are positioned by large windows, the perfect spot to take in views of the double-height swimming pool on the storey below. It's a showpiece of cutting-edge design: glass panels give visibility to the azure water from the changing area, which leads to a high-spec sauna and gym.







“It’s a showpiece of cutting-edge design: glass panels give visibility to the azure water from the changing area, which leads to a high-spec sauna and gym.”

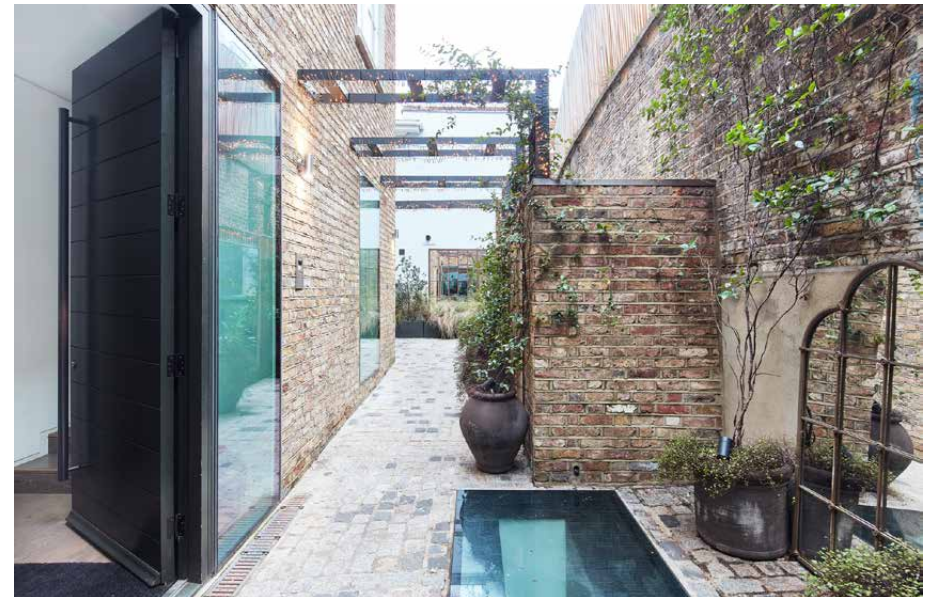




Outdoor space

Walled for privacy and utterly ambient, the patio garden serves as a seamless extension of the home's sprawling living space. Tailor made for alfresco living during the warmer months, enjoy summertime barbecues and outdoor dinners. There's also the home's cobbled entryway – a private perch for morning coffees.



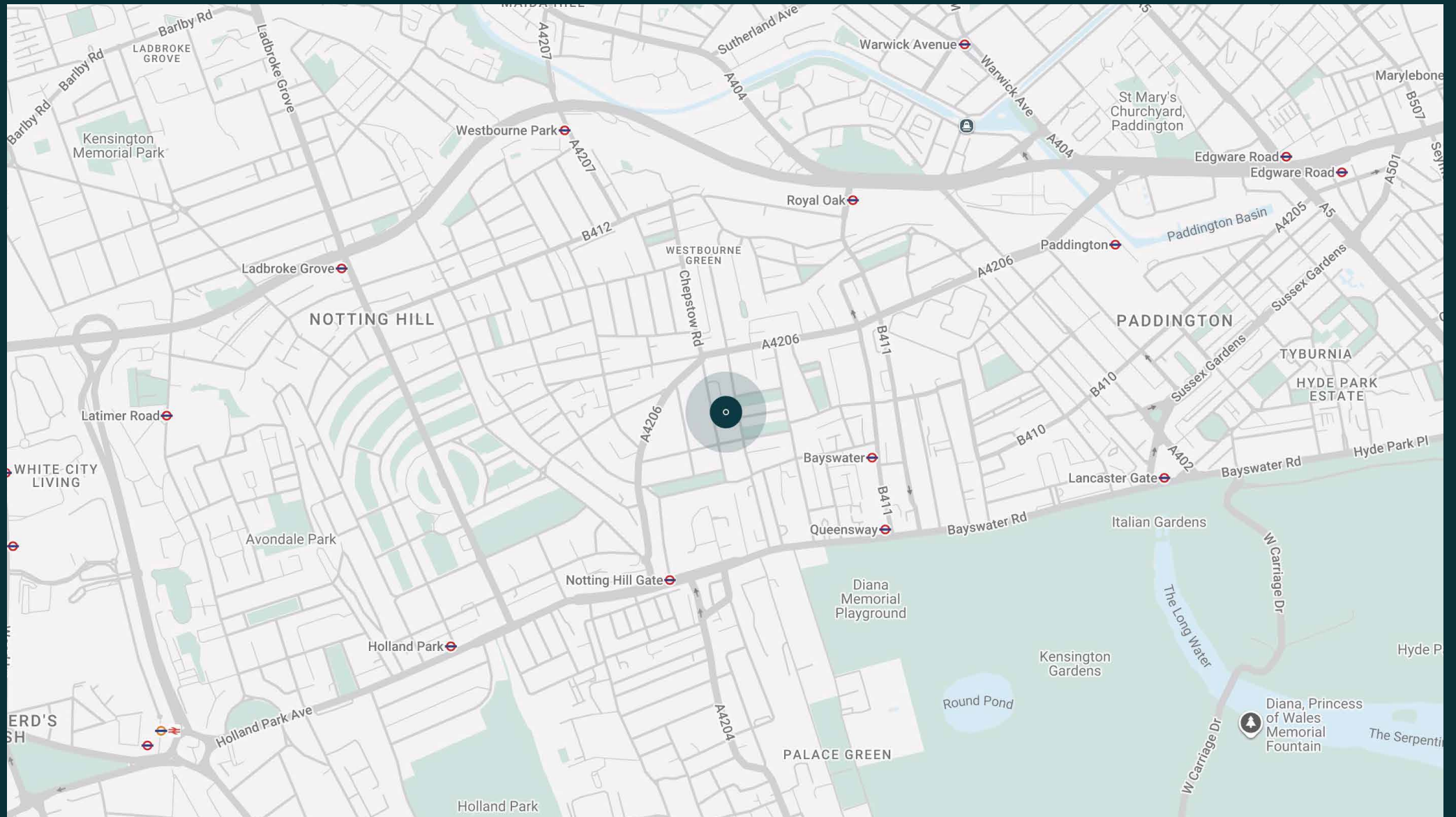


The neighbourhood

A stone's throw from Westbourne Grove. Explore Notting Hill at its classiest.

Peace and quiet are easy to find in Rede Place. It's a home for unwinding in a thoroughly 21st-century sense. But just past Chepstow Villas, a string of award-winning restaurants, boutiques and artisan cafes line Westbourne Grove. Laugh over brunch at Granger & Co., before swinging by Diptyque. Middle-eastern fare at Ottolenghi for dinner. Reach Hyde Park in 15 or stride further and explore the ancient woodlands of Holland Park in less than 20. Keep an eye out for peacocks. Queensway and Notting Hill Gate tube stations will get you where you need to go.

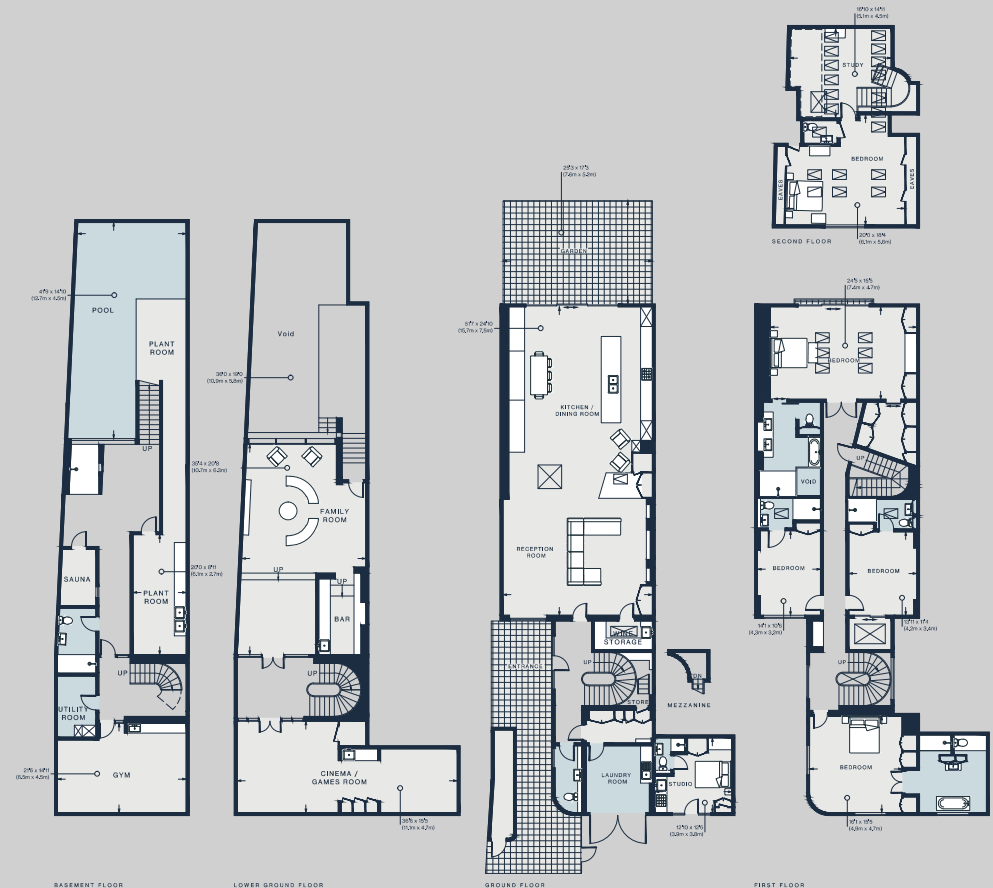




Property features

- Design by 23 Architecture
- Open-plan kitchen, dining and reception room
- Family room with home bar
- Principal bedroom suite with dressing room
- Three guest bedroom suites
- One further bedroom
- Self-contained artist studio with a private entrance
- Study
- Cinema and games room
- Double-height swimming pool
- Gym
- Sauna
- Private garden

Approx. 8,156 sq ft / 757.8 sq m



Approx. Gross Internal Area = 8,156 sq ft / 757.8 sq m (Including Mezzanine/ Excluding Void / Eaves)

Floor plans are for illustrative purposes only and not to scale. Compliant with RICS code of measuring practice. Furniture layouts are indicative only. This property may be furnished, part-furnished or unfurnished. Please refer to your agent for details.

Guest & concierge services

Our concierge team are here to help guests settle in, seamlessly. Centre court tickets to Wimbledon, Premier League seats with the best views, Savile Row tailors on standby, or a private chef to cater to individual tastes – we aim to elevate every stay.

From the moment of booking with us, each guest has a single point of contact to finesse the details. Our statement spaces are just the starting point – to ensure everyone feels at home, our rates include:

-
- Weekly housekeeping
 - Flexible check-in/out
 - Luxury linens and Bamford toiletries
 - Legal compliance on all our homes
 - A personal welcome and arrival essentials
 - Unlimited access to guest services and tailored experiences
 - Professional inventory inspection before and after every stay
 - Access to a curated portfolio of sole agency properties





Please get in touch if you have any questions
or require any further information.

hello@domusstay.com

+44 (0)20 8168 8880

The property particulars are a guide not statements. Descriptions, photographs, and plans are for guidance only. The Property is offered "subject to contract and references". No warranties, representations, License or Tenancy is given by Domus Stay. Our full disclaimer together with trading names and our Privacy Policy is shown on our website

© Domus Stay 2025. All rights reserved.

