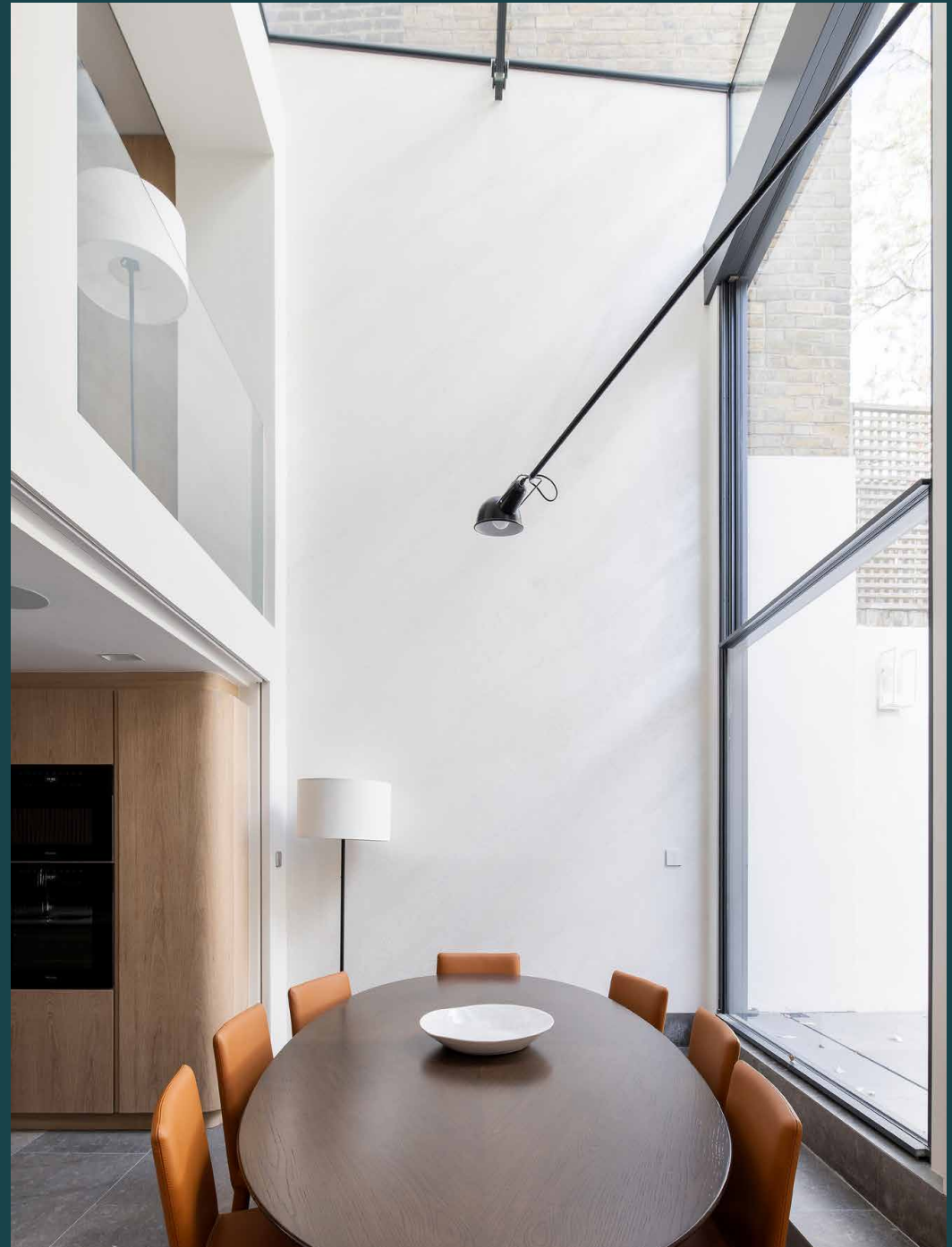
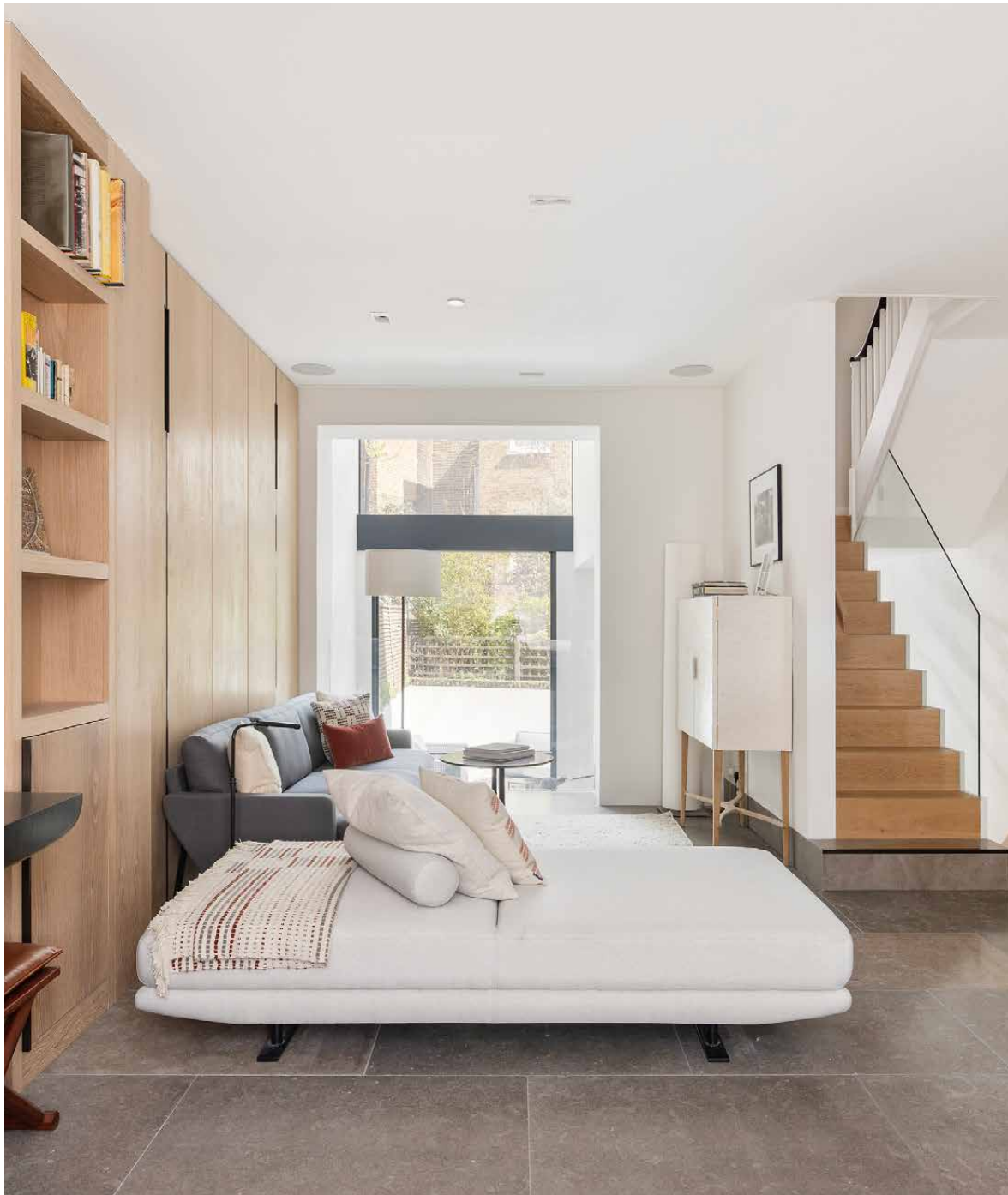

Rawlings Street

Sloane Square SW3

4 Bedrooms, 3 Bathrooms
For 8 guests



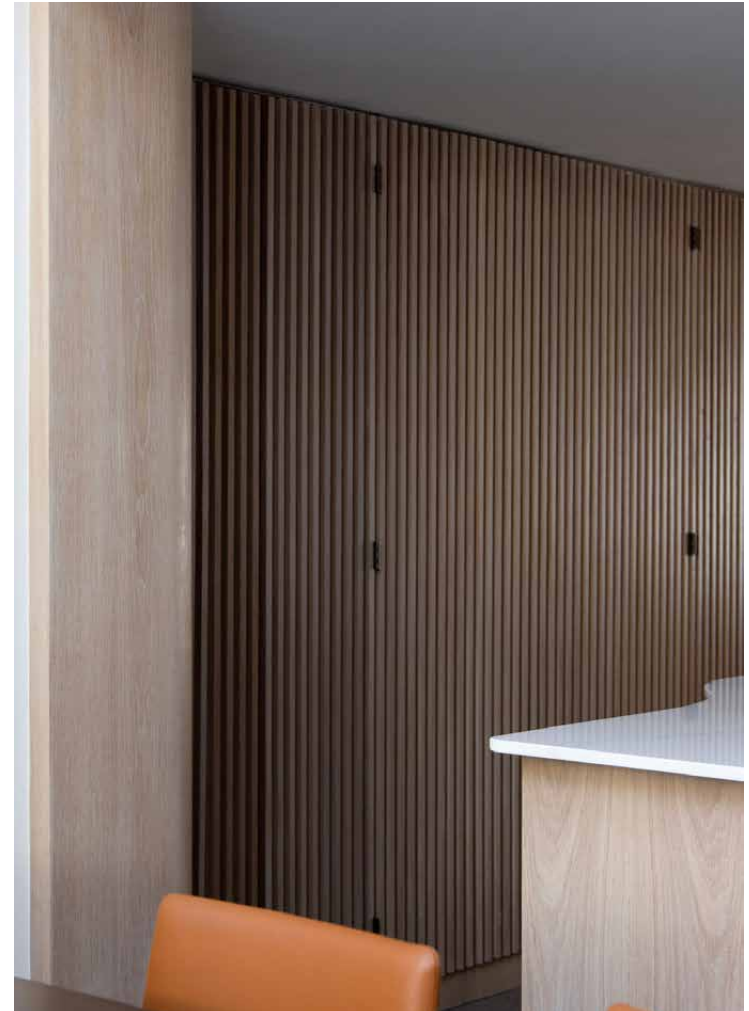


Tactile textures meet double-height grandeur at this recently refurbished four-bedroom townhouse.

Set into a period terrace a stone's throw from Chelsea's coveted Sloane Square is a design-led home crafted by Anthro Architecture. Cooling, whitewashed living spaces pair with reams of daylight in the open-plan reception room. Occupying the raised ground level, dark stone flooring sets the scene. Bespoke joinery elevates the space, which is accented with curious artwork. Grab a book from the shelf and settle into the reading nook or catch up with friends in the convivial seating area that overlooks the level below.

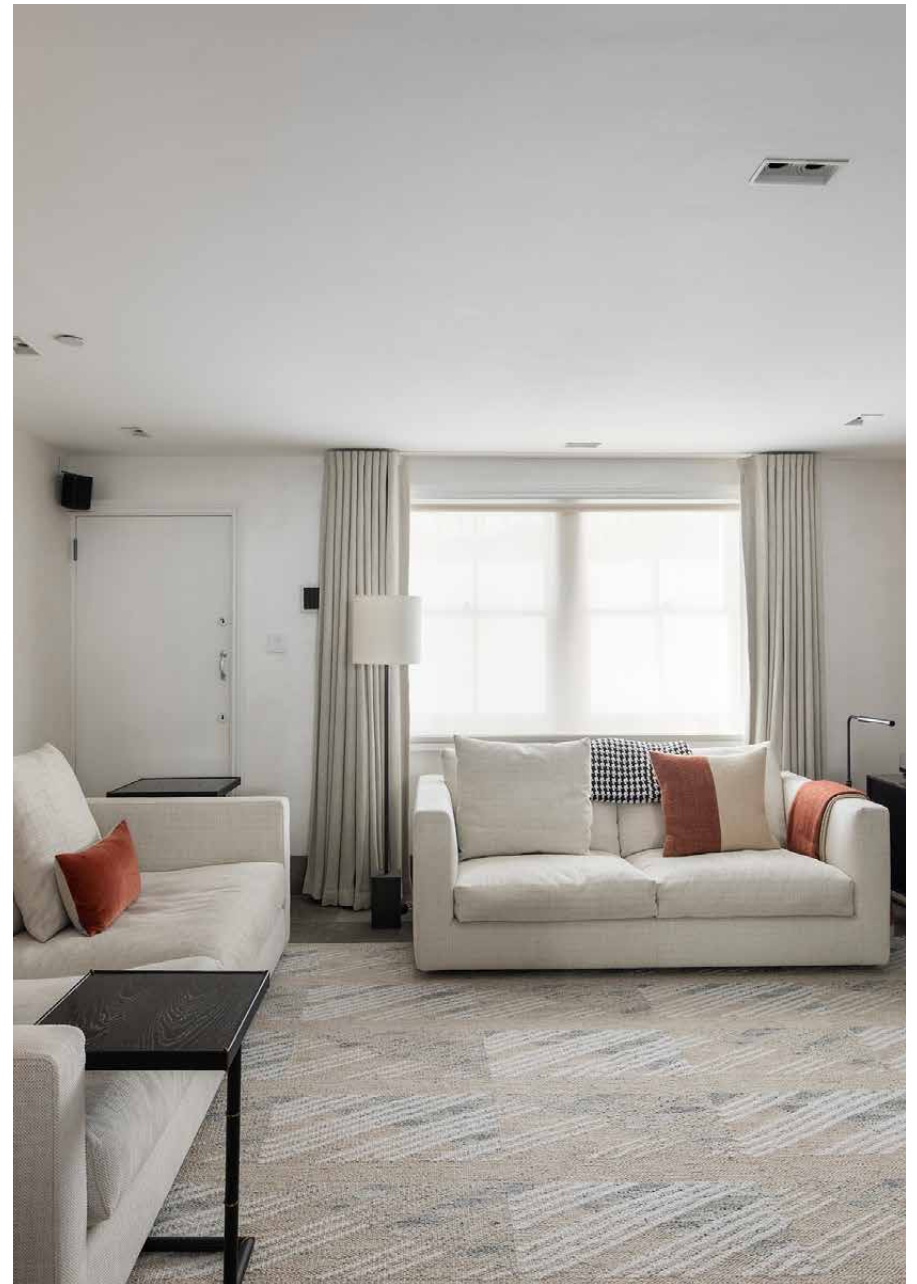
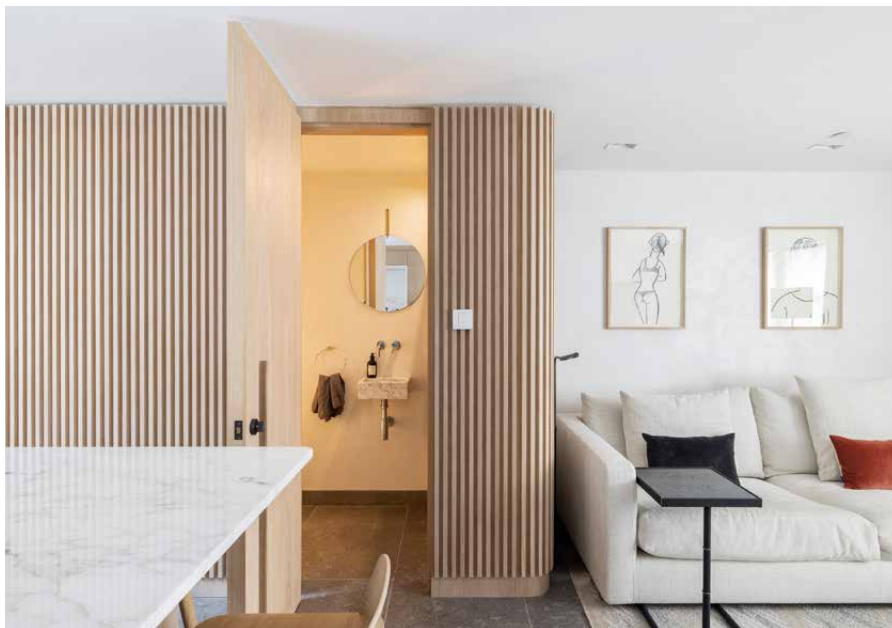
On this floor, an oval table provides seating for eight, its dark wood grain surface illuminated by natural light. Expansive glazing soars upwards before wrapping over the space in the form of a glass roof. This area leads out to a split-level patio garden perfect for an al fresco cappuccino or whiling away a summer's afternoon.







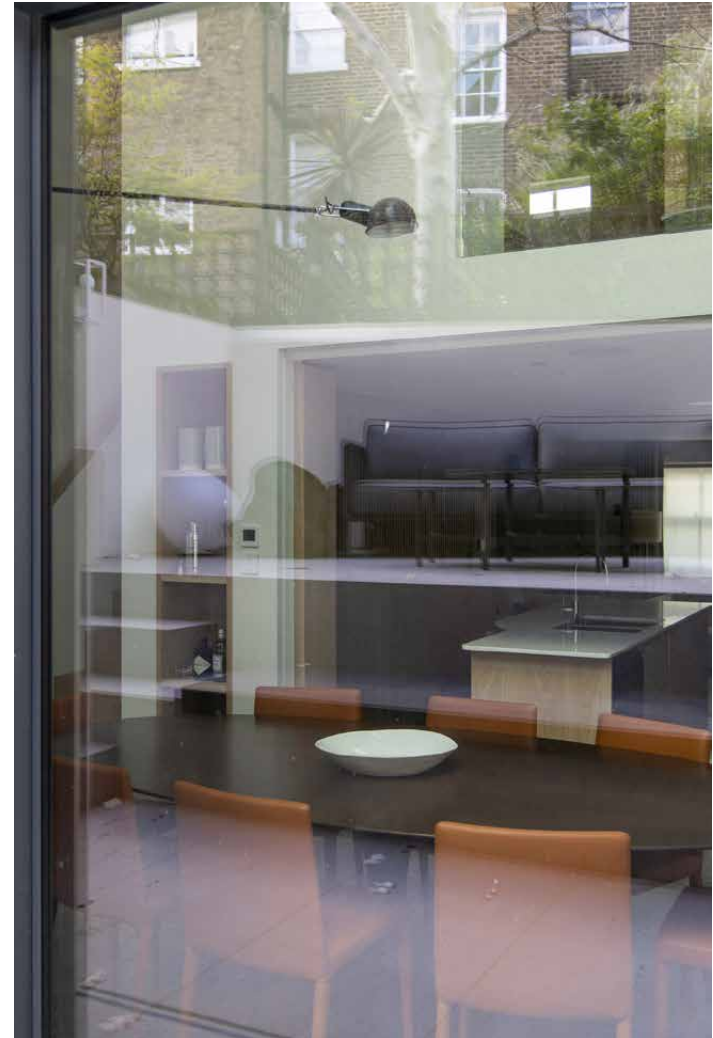
Arranged around a central island, a wood-wrapped kitchen speaks of Scandinavian influences. Prepare a meal using integrated appliances then eat on the marble-topped breakfast bar. Concealing the entrance to an aesthetic cloakroom, uniform vertical lines play across a feature wall. Rounded at one end, its form recalls the curvature of the island. Light is channelled all the way through the kitchen and into a comfortable TV area – an ideal spot to watch a film with the family.



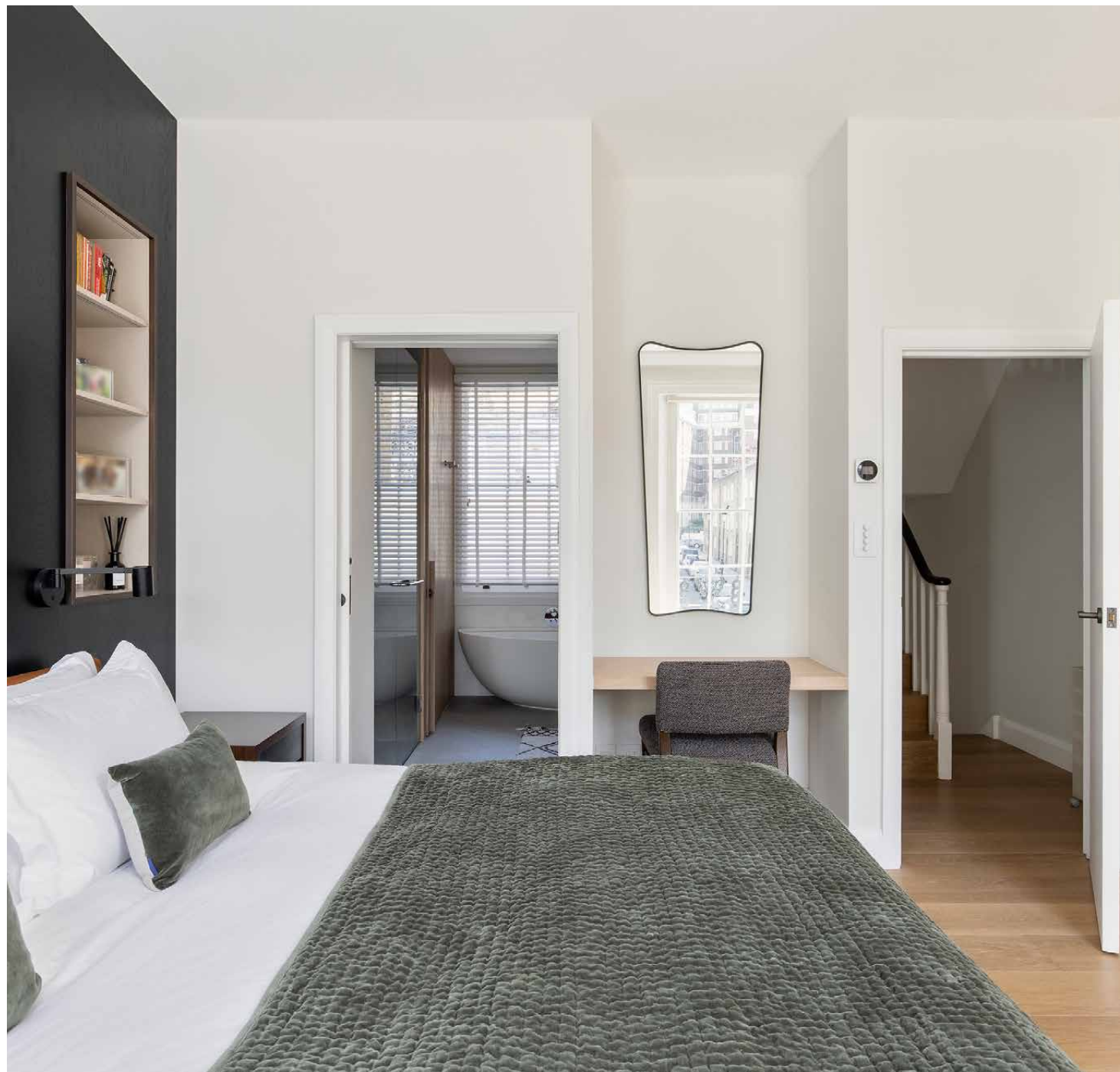


Voluminous proportions and natural light imbue the home with an uplifting atmosphere.





The principal bedroom suite is characterised by tall, southwest-facing sash windows and a dark feature wall with recessed shelving and built-in reading lights. A modern en suite bathroom features twin basins, a freestanding bath and a walk-in shower. Four further bedrooms benefit from fitted storage, natural light and hardwood floors. One bedroom could be used as an exercise space and comes with a Peloton. Another bedroom is ideal as a study.









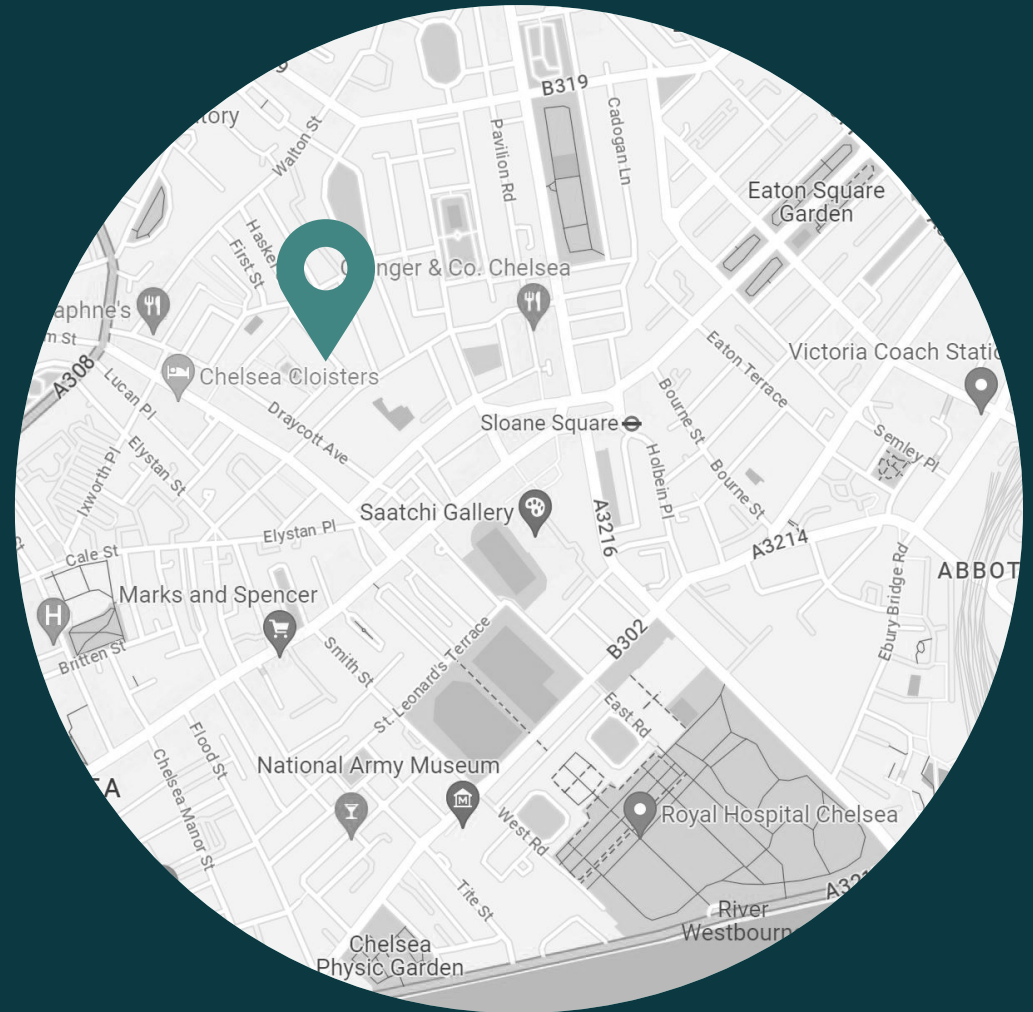




LOCATION

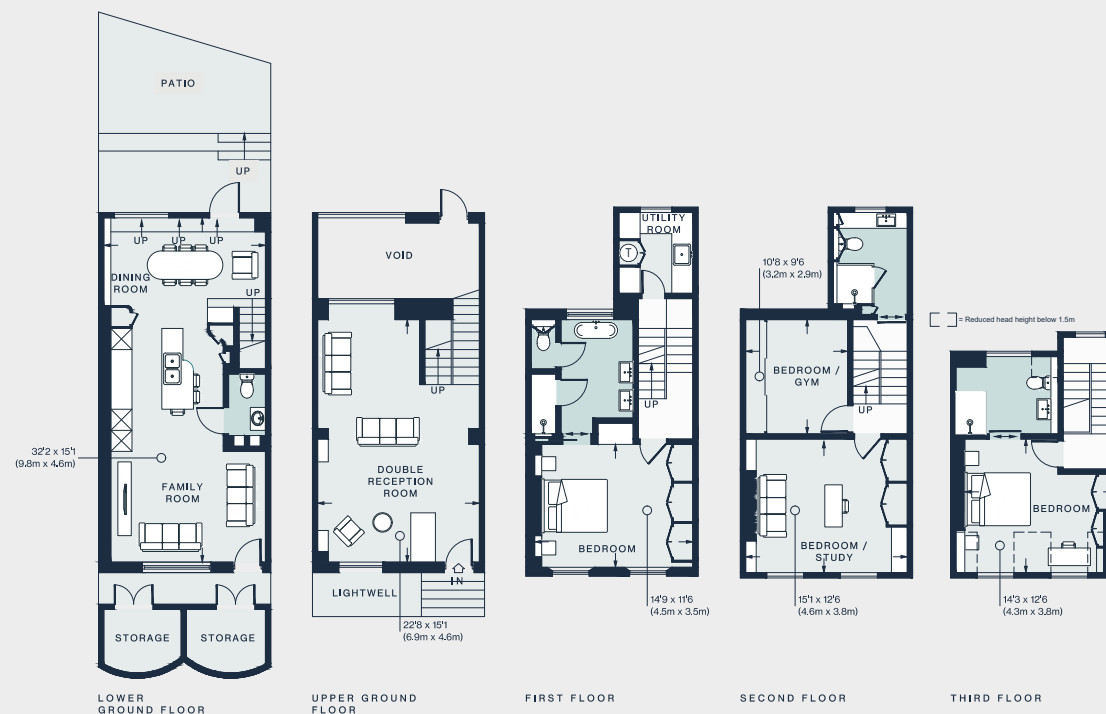
With Sloane Square and the King's Road just moments away, Rawlings Street is an ideal spot from which to explore Chelsea.

Head out for an art-filled afternoon at the Saatchi, Gagliardi or Box Gallery. The area is known for its blooming floral displays at the annual RHS Chelsea Flower Show; peruse bouquets at The Flower Stand or Chelsea Wild. The neighbourhood is also replete with options for fine dining. From your front door, reach three Michelin-starred restaurants – Elystan Street, The Five Fields and Claude Bosi at Bibendum – within just five minutes.



PROPERTY HIGHLIGHTS

- Two reception rooms
- Modern kitchen
- Double-height dining space
- Principal bedroom suite
- Three further bedrooms
- Optional gym
- Optional study
- Patio Garden
- Royal Borough of Kensington & Chelsea
- Approx 1,982 sq ft / 184 sq m



Approx. Gross Internal Area = 1,982 sq ft / 184.1 sq m
 Storage = 84 sq ft / 7.8 sq m
 Total = 2,066 sq ft / 191.9 sq m

Floor plans are for illustrative purposes only and not to scale. Compliant with RICS code of measuring practice.
 Prepared for Domus Stay. Copyright © All Rights Reserved.



Please don't hesitate to get in touch
if you have any questions or require
any further information.

hello@domusstay.com

+44 (0)20 8168 8880

Domus Stay provides the perfect combination of property, place and personal service for the world's most remarkable people. If you have any questions, or if we can help in any way, please contact us on the above number. Be it about a property you have, a property you want, dates to check or any special requirements you may need, we'd love a chat.

