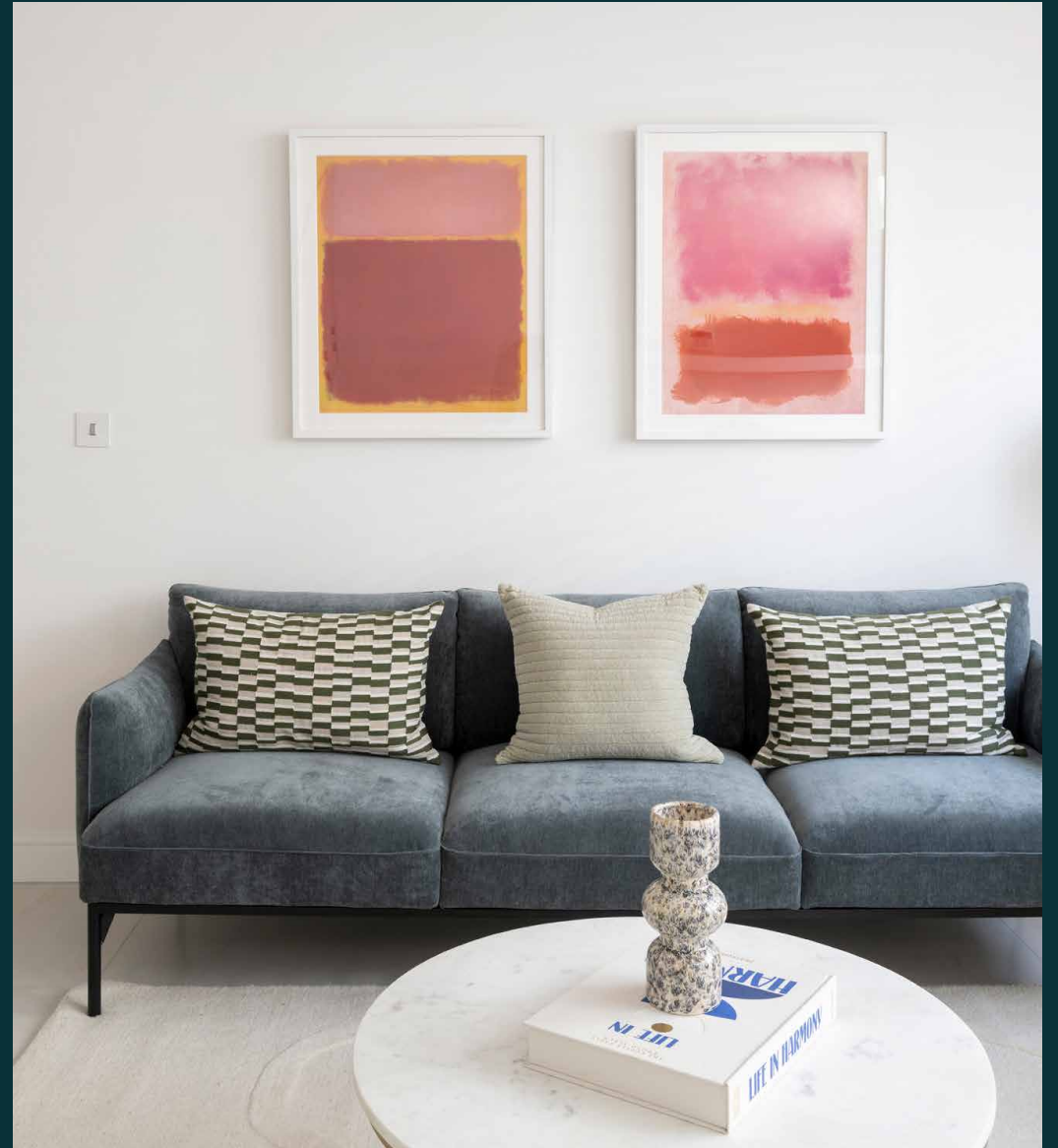


domus
stay.

Queen's Mews

BAYSWATER

4 Bedrooms, 3 Bathrooms
For 8 guests





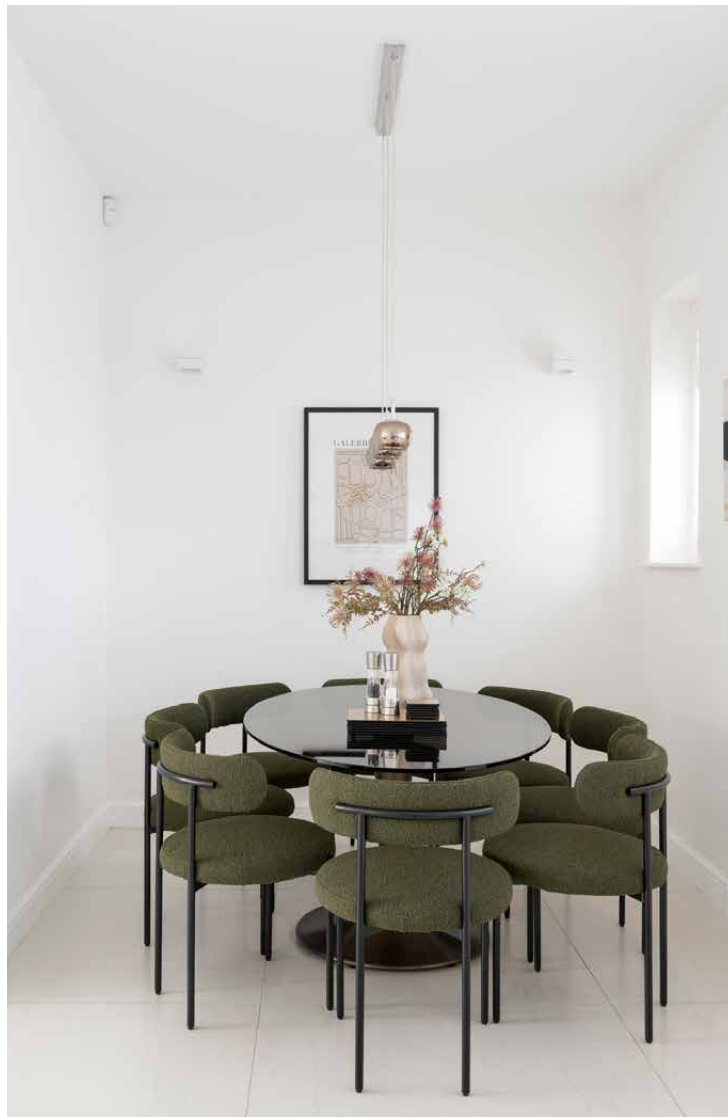
In a peaceful mews setting, this contemporary four-bedroom home is a breather from bustling city life.

A contemporary take on the traditional mews, this transformed home captivates from the onset. Nestled along a cobbled lane just a stroll from Hyde Park, its brick façade and glossy green door serve an inviting first impression. Inside, pared-back design flows through airy open spaces to switch off and unwind.



The living spaces

Inside, a contemporary canvas unfurls. A backdrop to drift between lounging and dining, this space is a study in minimalist elegance. An L-shaped kitchen is conducive to seamless culinary affairs, coupling sleek surfaces with integrated appliances and an American-style fridge discreetly housed in the pantry. Heated stone tiles connect the dining area – anchored by an oval glass table and plush olive seats. The reception space lies opposite, where comfort and creative touches coalesce. White walls serve as a pristine canvas for Mark Rothko artworks, while a sumptuous navy sofa invites relaxation.







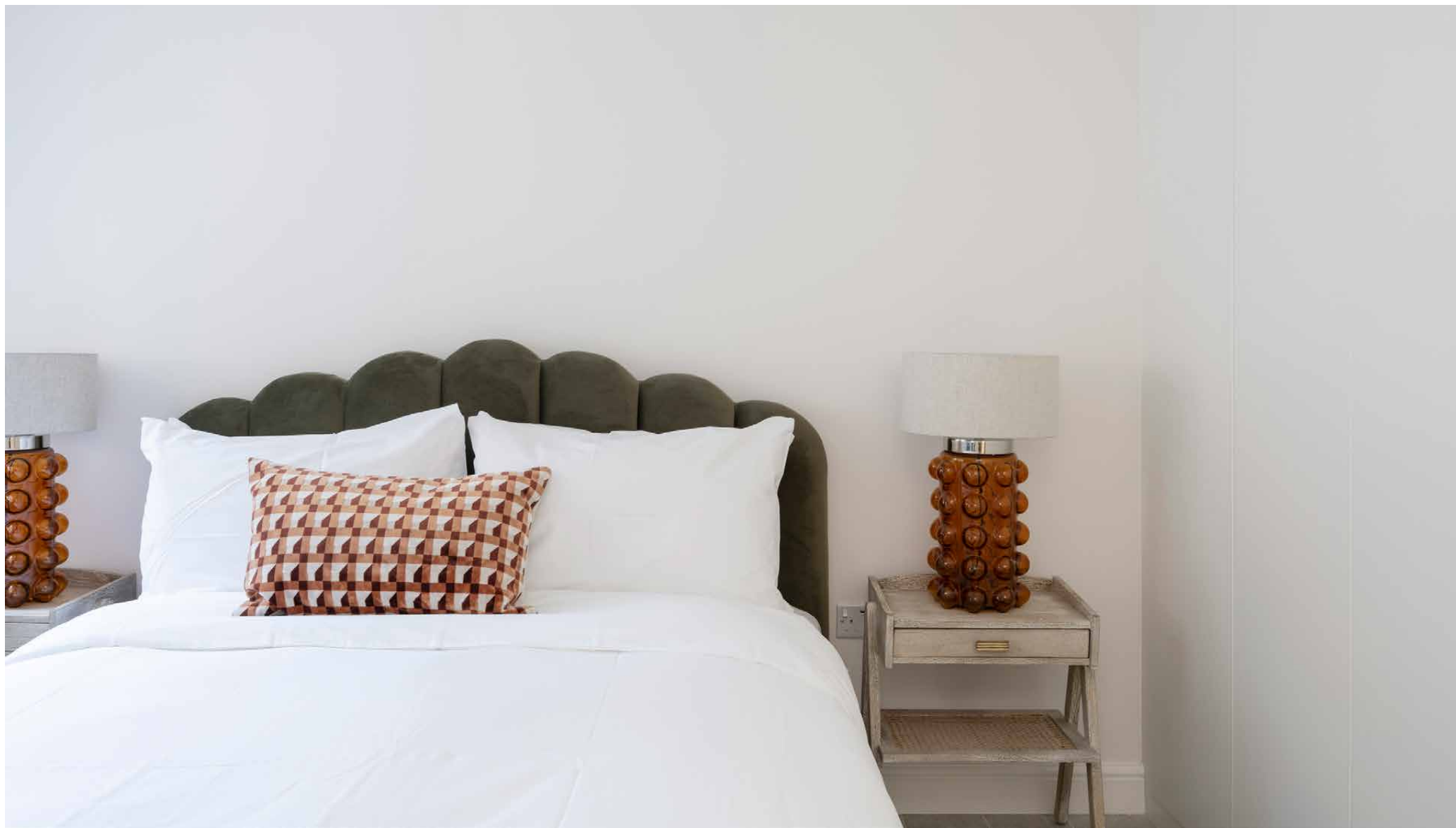
Bedrooms & bathrooms

The principal suite crowns the top floor, a private haven illuminated with an entire wall of windows. A substantial dressing area brings an ease to mornings, while the en suite bathroom features a dramatic backdrop of slate-toned tiles, a walk-in shower and a bathtub. Situated opposite, a versatile, sky-lit study is a versatile nook to retreat to when work calls, plus hosts a sofa bed for occasional guests.







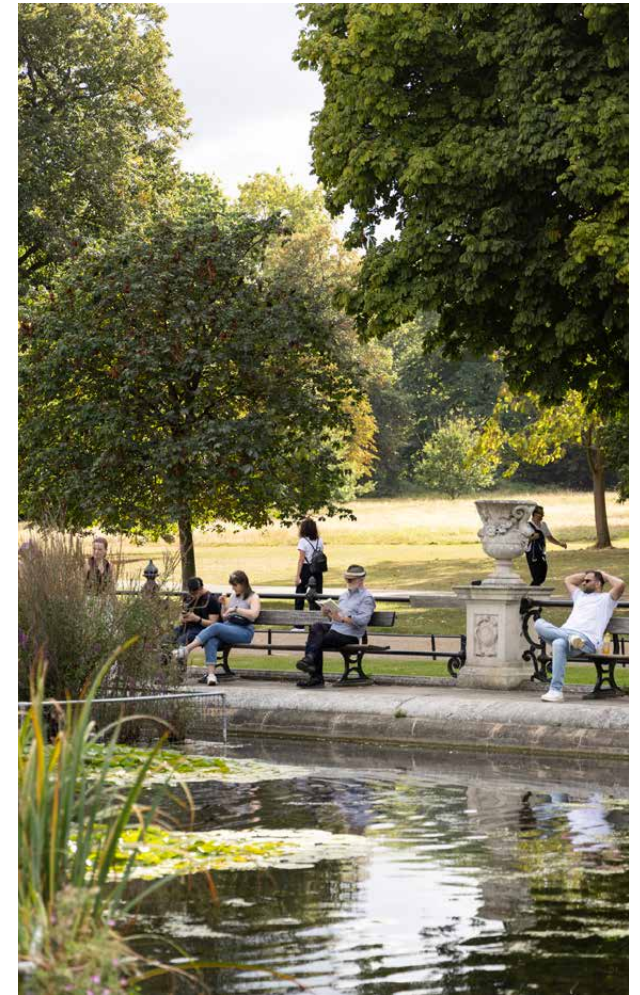


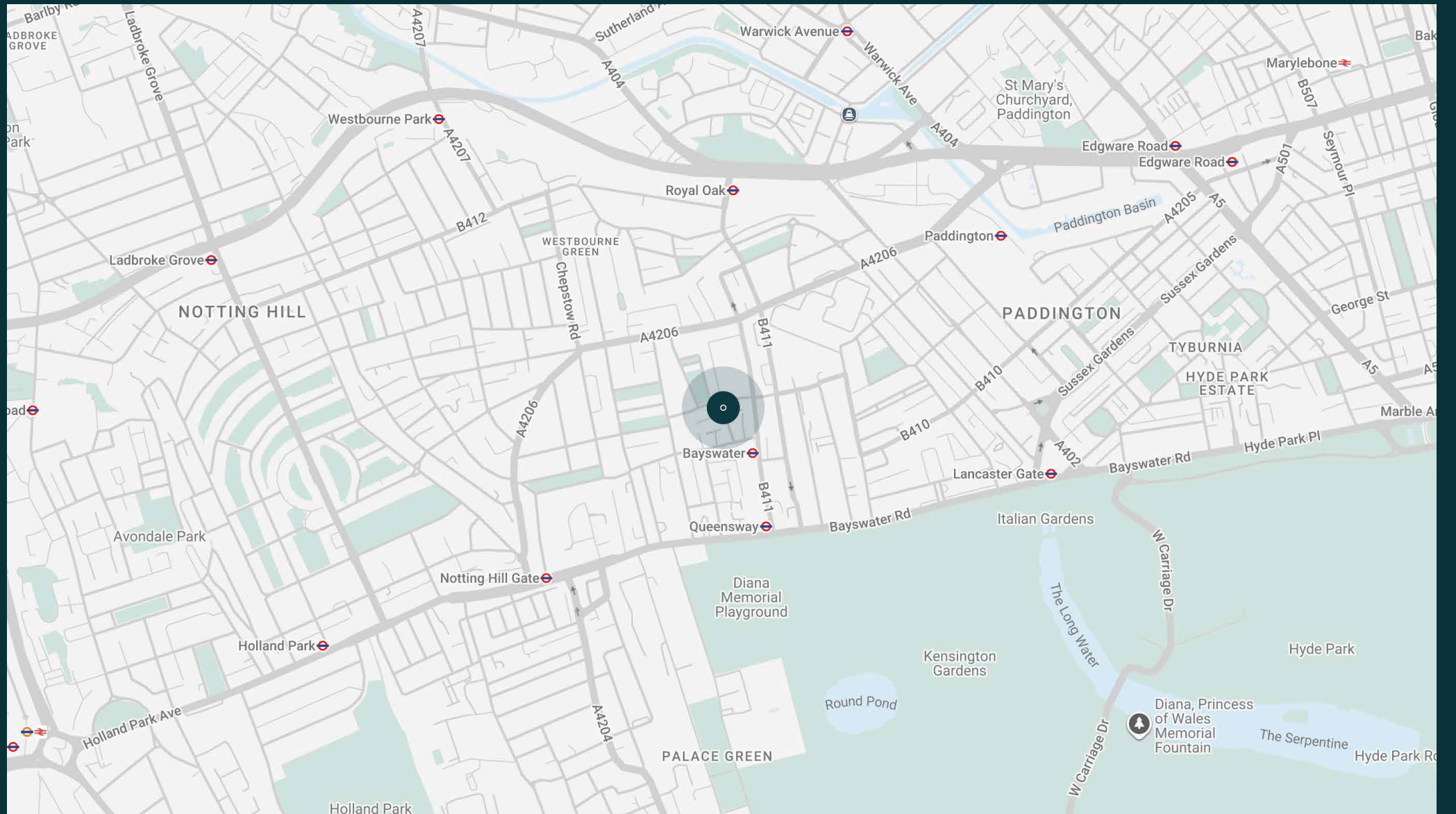


The neighbourhood

Located in a quiet cul-de-sac of Mews houses, this tranquil setting offers a breather from bustling city life.

Take in the Albert Memorial in Kensington Gardens, stroll around the lake in Hyde Park or – if you're feeling brave – dive into the Serpentine Lido. Recharged and ready to go, the best of Bayswater and Notting Hill is within walking distance. Ease into the day with a flat white at Guillam Coffee House, a workout at Psyche, or brunch at Farm Girl. Then continue along Portobello Road for a spot of vintage shopping. Come evening, head to Gold for a lively dinner.

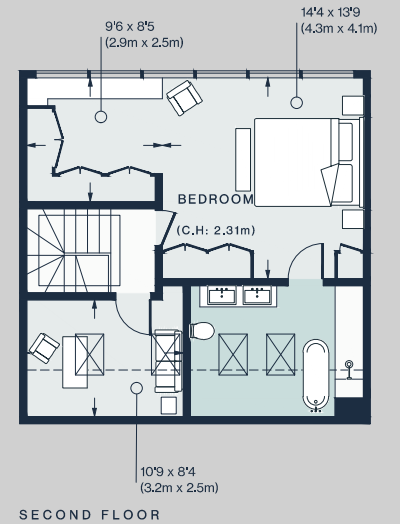
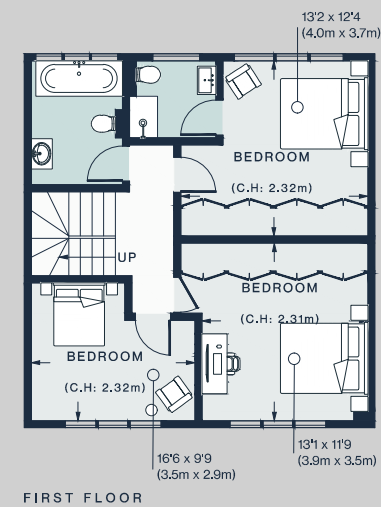
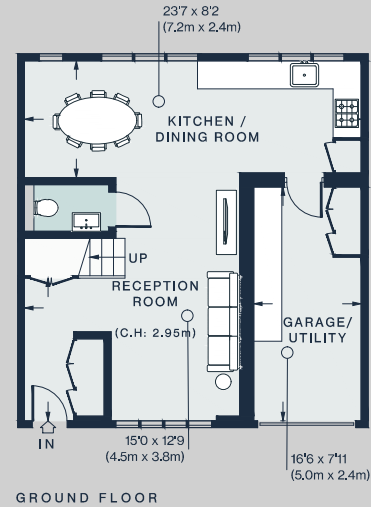




Property features

- Open-plan kitchen and dining room
- Reception room
- Principal bedroom suite with dressing area
- Guest bedroom suite
- Two further bedrooms
- Family bathroom
- Versatile study
- Utility room
- Cloakroom
- Nest temperature control throughout

Approx. 1,754 sq ft / 163 sq m



Approx. Gross Internal Area = 1,754 sq ft / 163 sq m

Floor plans are for illustrative purposes only and not to scale. Compliant with RICS code of measuring practice.

Guest & concierge services

Our concierge team are here to help guests settle in, seamlessly. Centre court tickets to Wimbledon, Premier League seats with the best views, Savile Row tailors on standby, or a private chef to cater to individual tastes – we aim to elevate every stay.

From the moment of booking with us, each guest has a single point of contact to finesse the details. Our statement spaces are just the starting point – to ensure everyone feels at home, our rates include:

-
- Weekly housekeeping
 - Flexible check-in/out
 - Luxury linens and Bamford toiletries
 - Legal compliance on all our homes
 - A personal welcome and arrival essentials
 - Unlimited access to guest services and tailored experiences
 - Professional inventory inspection before and after every stay
 - Access to a curated portfolio of sole agency properties





Please get in touch if you have any questions
or require any further information.

hello@domusstay.com

+44 (0)20 8168 8880

The property particulars are a guide not statements. Descriptions, photographs, and plans are for guidance only. The Property is offered "subject to contract and references". No warranties, representations, License or Tenancy is given by Domus Stay. Our full disclaimer together with trading names and our Privacy Policy is shown on our website

© Domus Stay 2025. All rights reserved.

