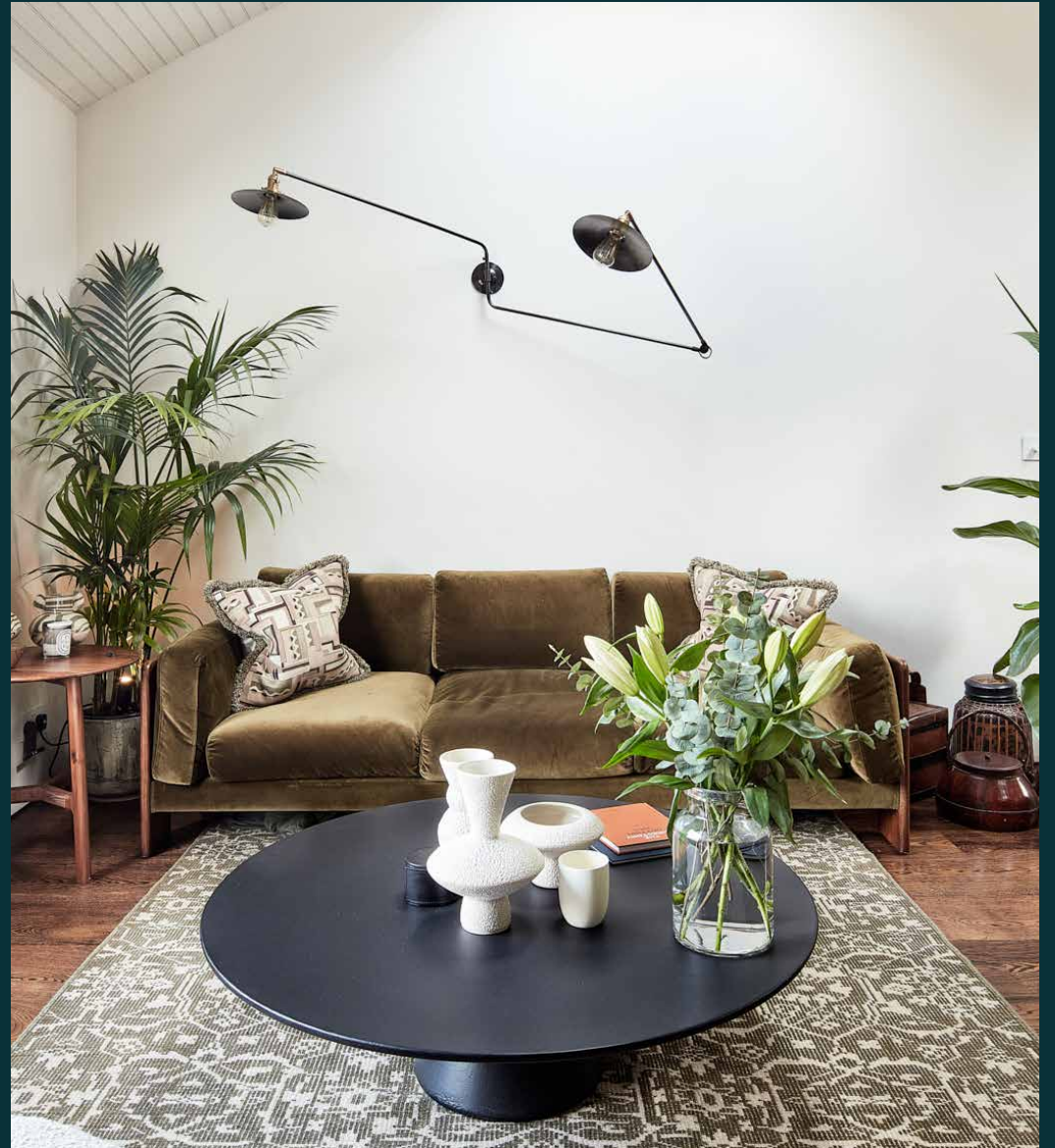


domus
stay.

Portobello Road V

NOTTING HILL

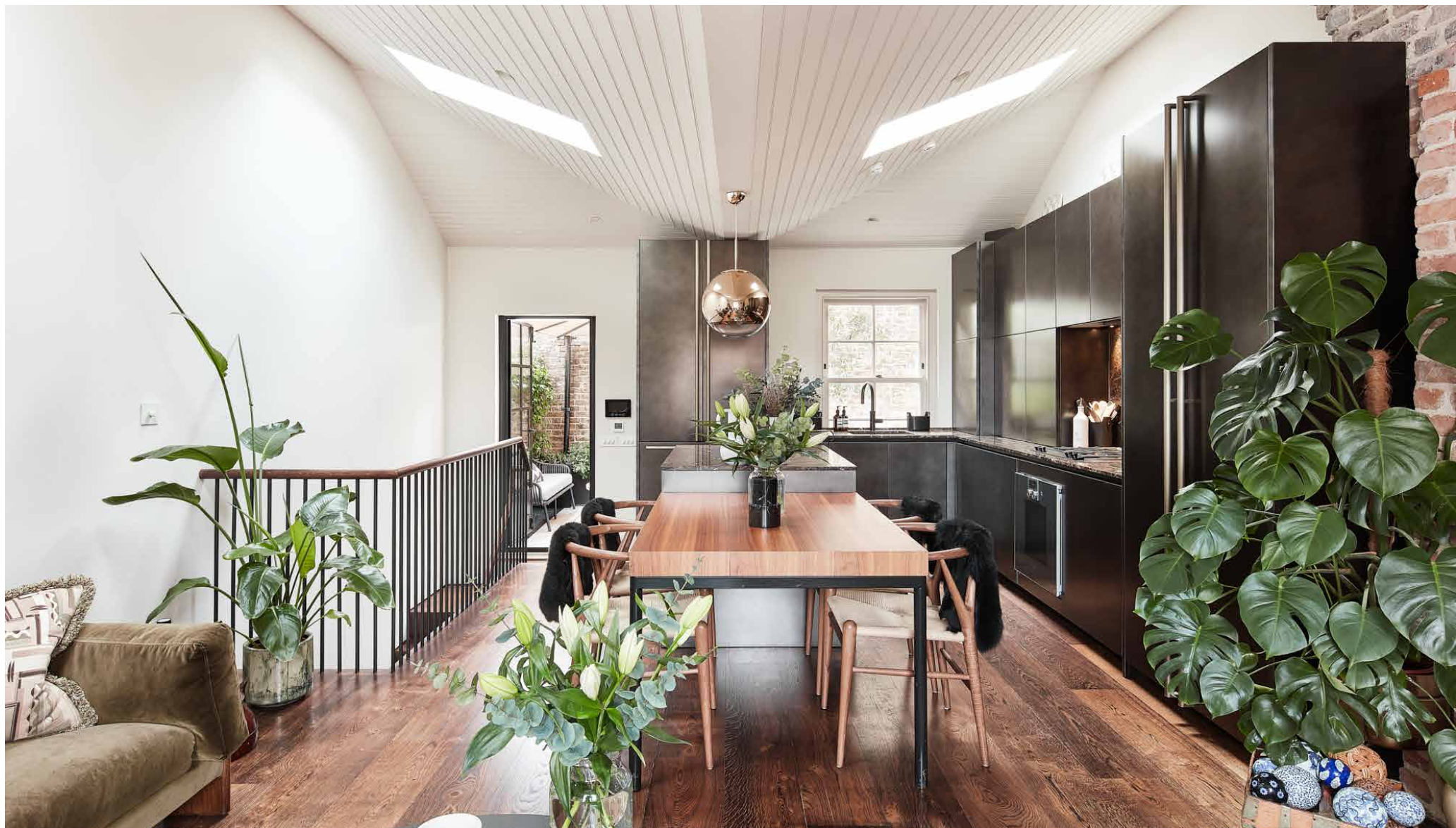
2 Bedrooms, 2 Bathrooms
For 4 guests





Overlooking the buzz of Portobello Road, the location of this stylish two-bedroom maisonette is unbeatable.

Portobello Road's eclectic stalls stretch for more than two miles, and this well positioned maisonette gives you an elevated view over the colourful scene. A listed clock hangs above the private front door – a nod to the home's former use as a clock shop. Past and present collide inside too: expect period architecture approached with a modern eye.



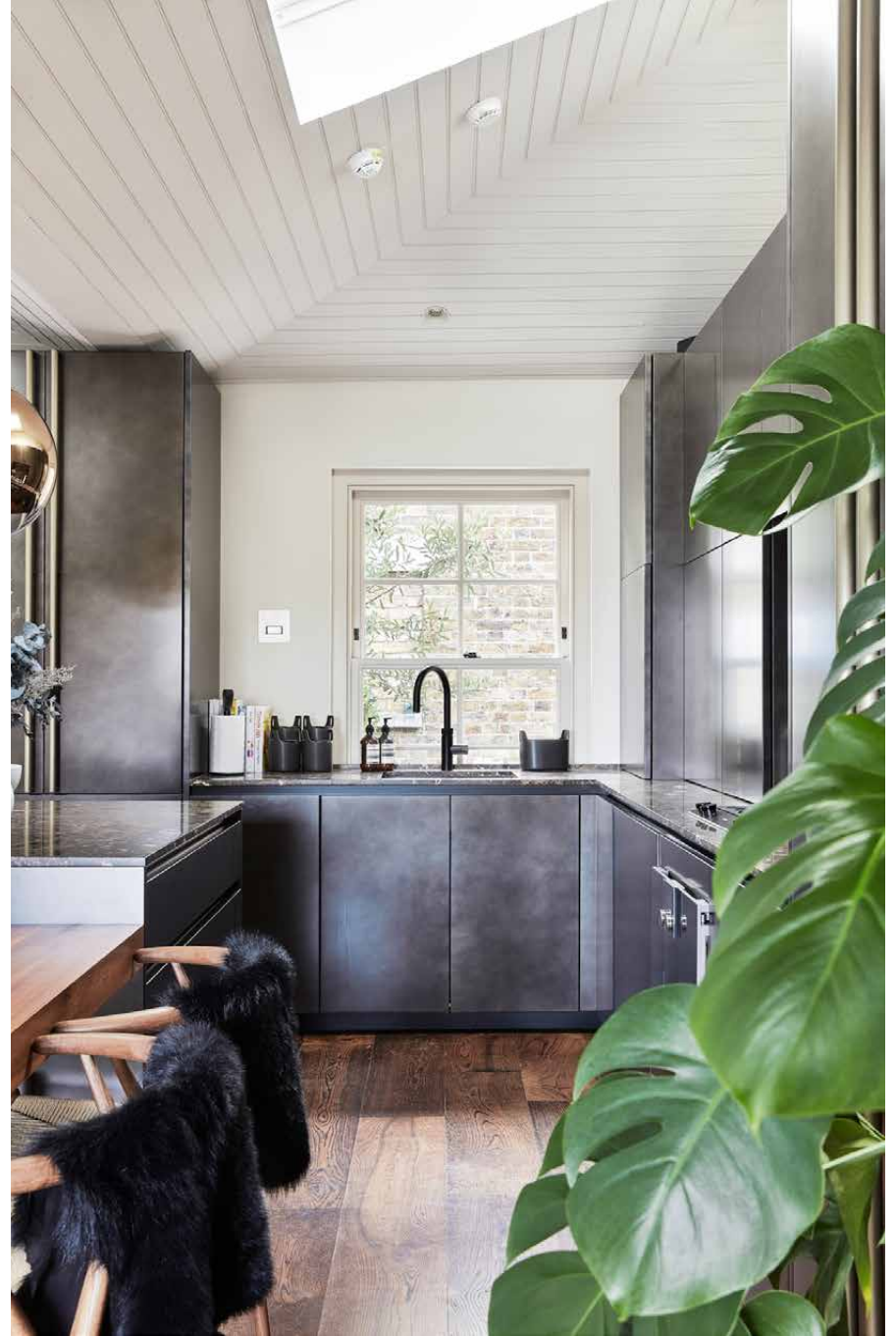


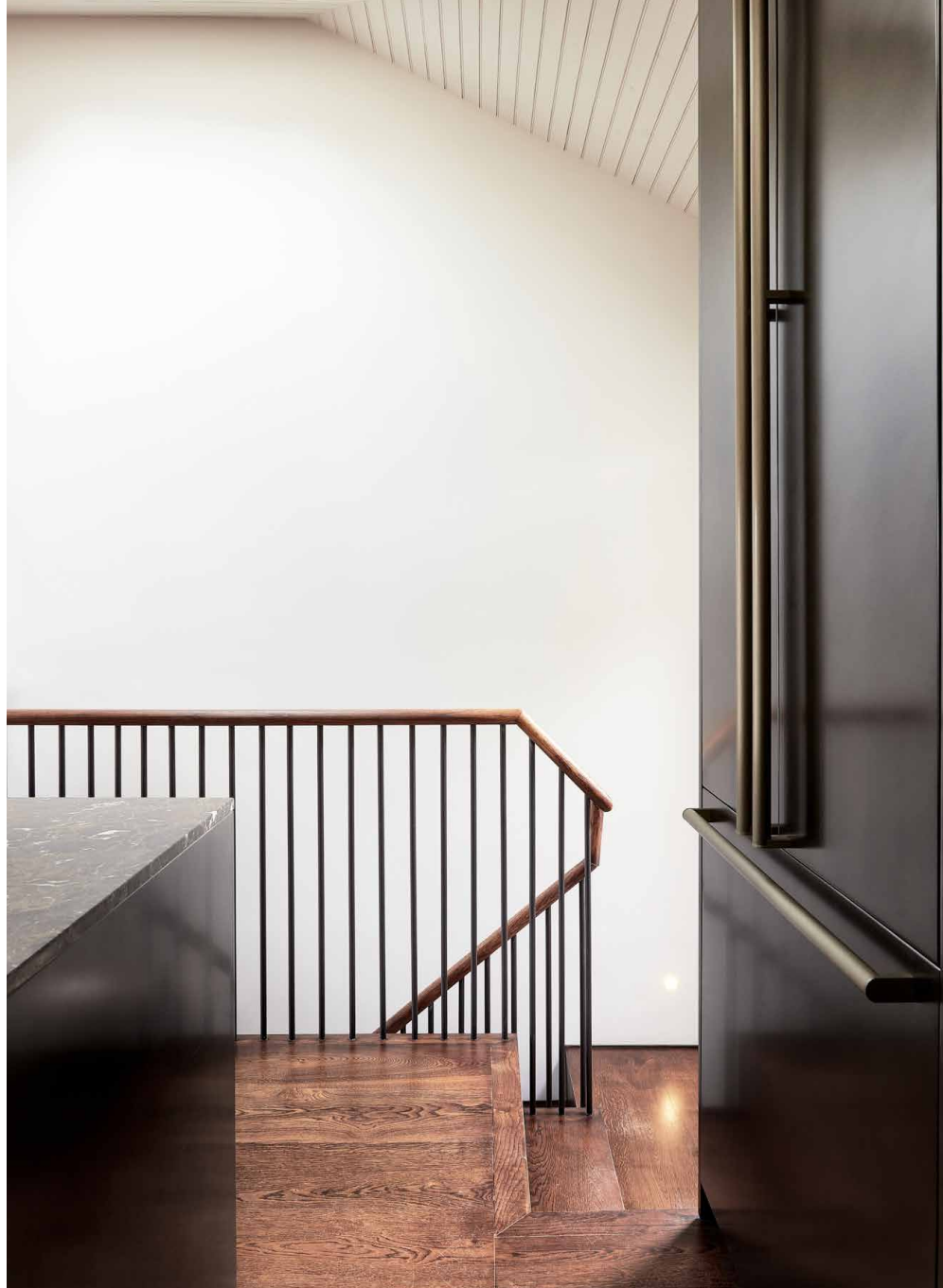
Living spaces

A wood-clad vaulted ceiling takes centre stage in the living space where skylights illuminate the bespoke Boffi kitchen. Marble counter tops, integrated Gaggenau appliances and wooden floors uplift the room further. To the other side and brightened by a large sash window, the reception area wears a restful aesthetic. A log burner occupies the restored original brick fireplace, creating a cosy spot for hunkering down after a day enjoying Notting Hill's hustle and bustle. Also on this floor, a Crittall door leads out to a private, plant-filled roof terrace – the perfect backdrop for an al fresco breakfast or an evening drink.

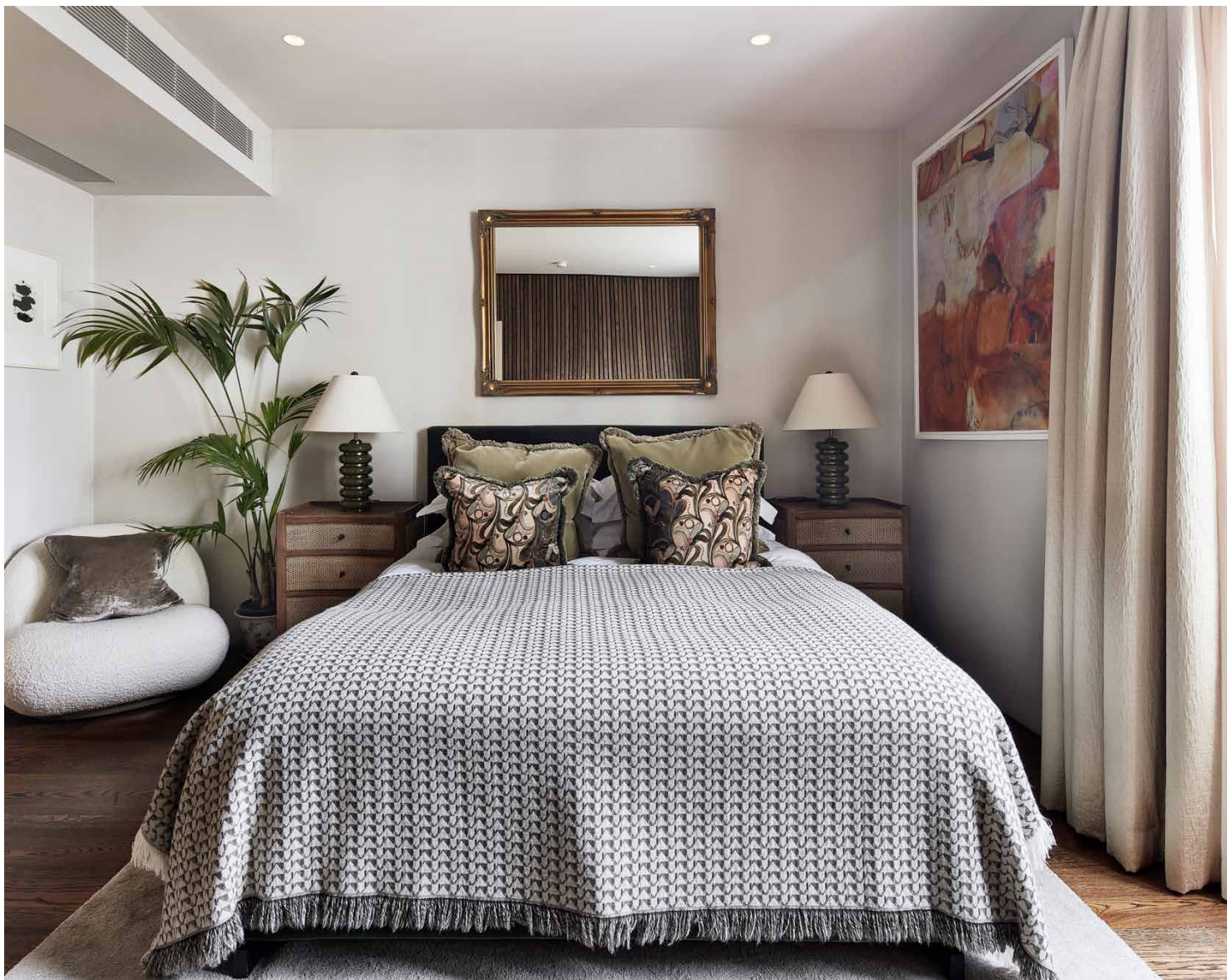








“Past and present collide inside, too. Up on the top floor, period architecture is approached with a modern eye.”

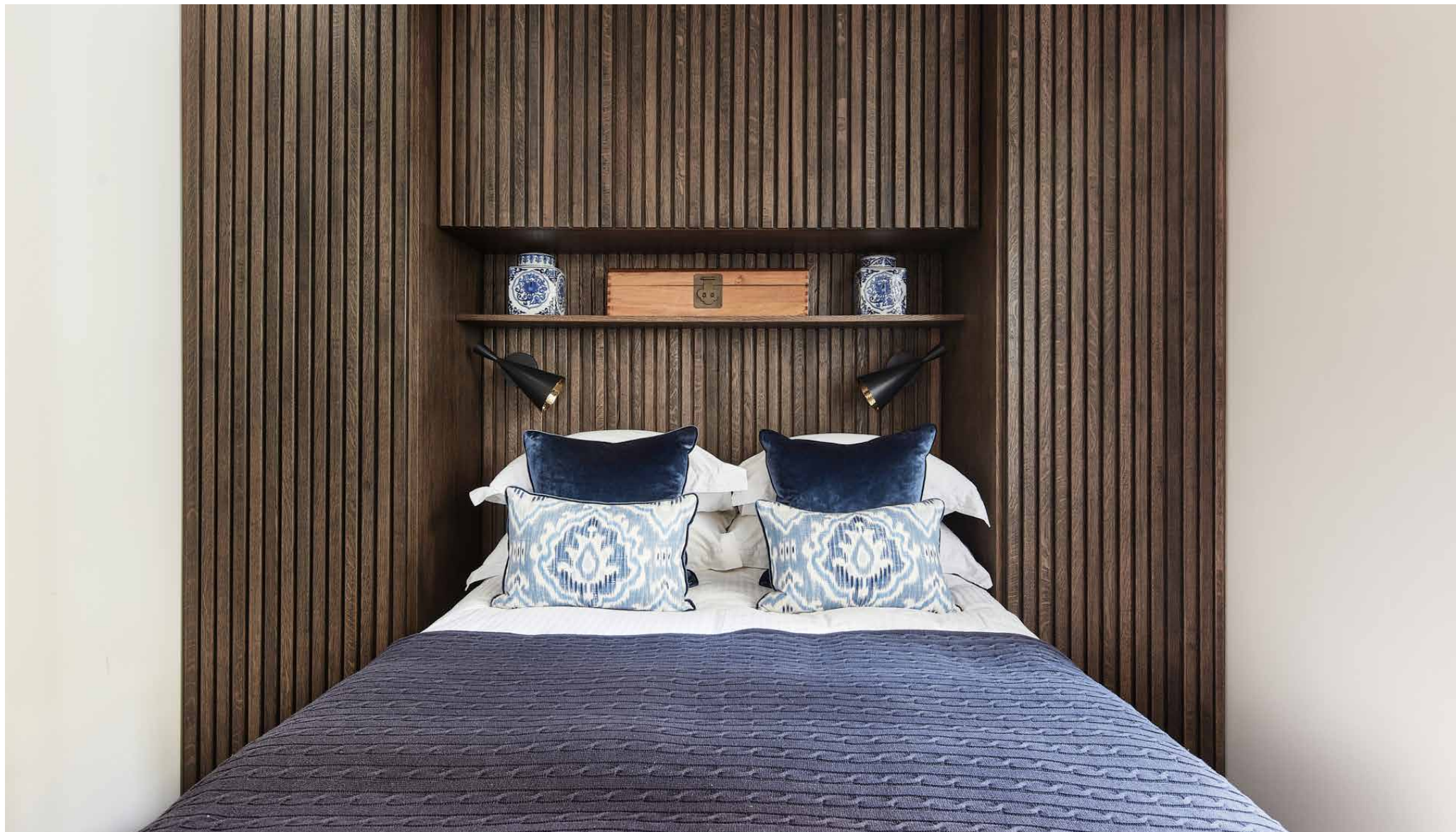


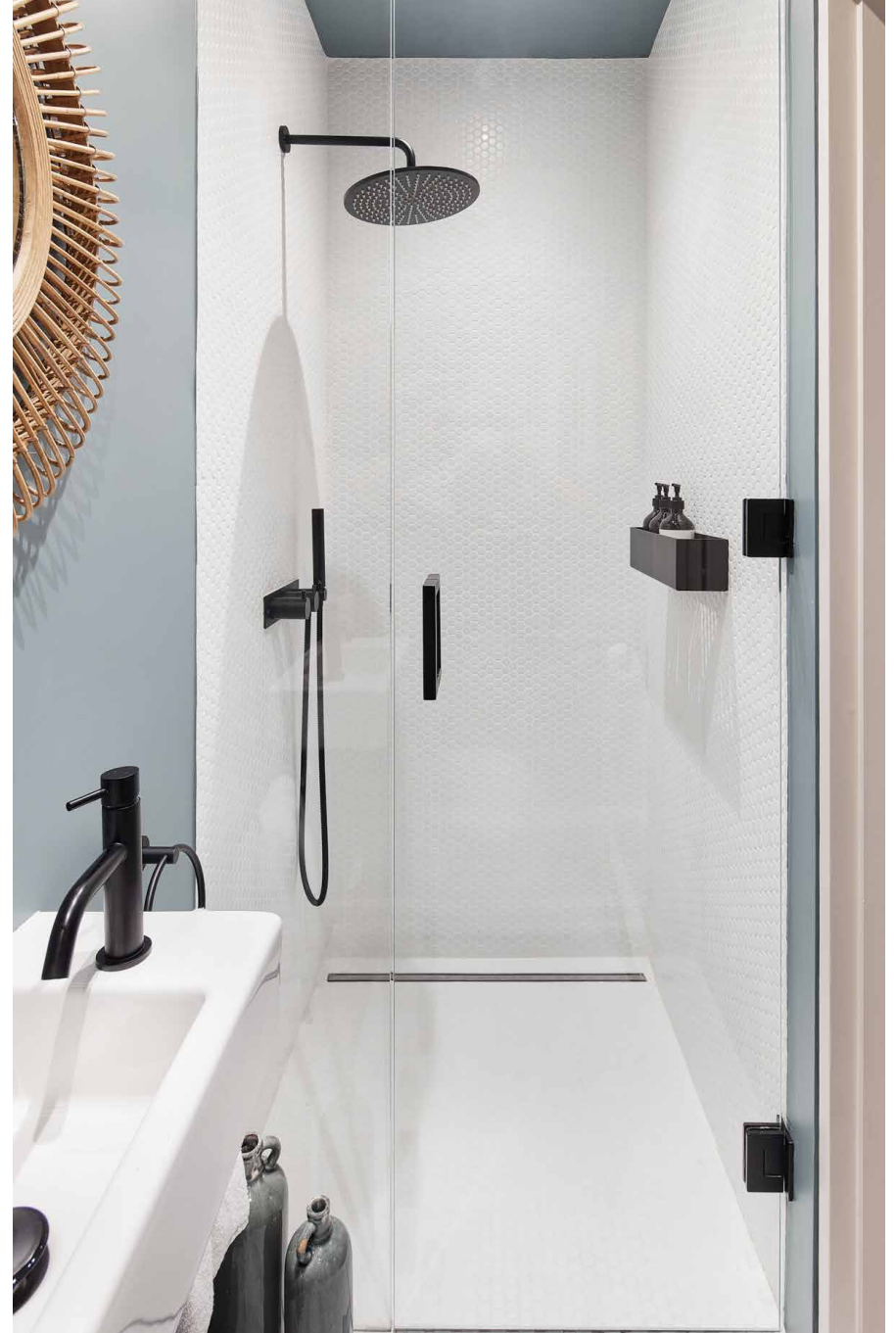
Bedrooms & Bathrooms

Elegant minimalism continues into the bedrooms. The principal suite is gently lit through French doors that open onto a Juliet balcony overlooking Portobello Road. Air conditioned and calming, a king-sized bed dominates the space, while floor-to-ceiling fitted storage is hidden stylishly behind a wall of panelling. The light and airy en suite bathroom features oversized marble tiles, elegant black hardware and a walk-in rainfall shower. The second bedroom enjoys direct access to a small terrace and is served by a contemporary bathroom finished with intricate tiling and a walk-in rainfall shower.



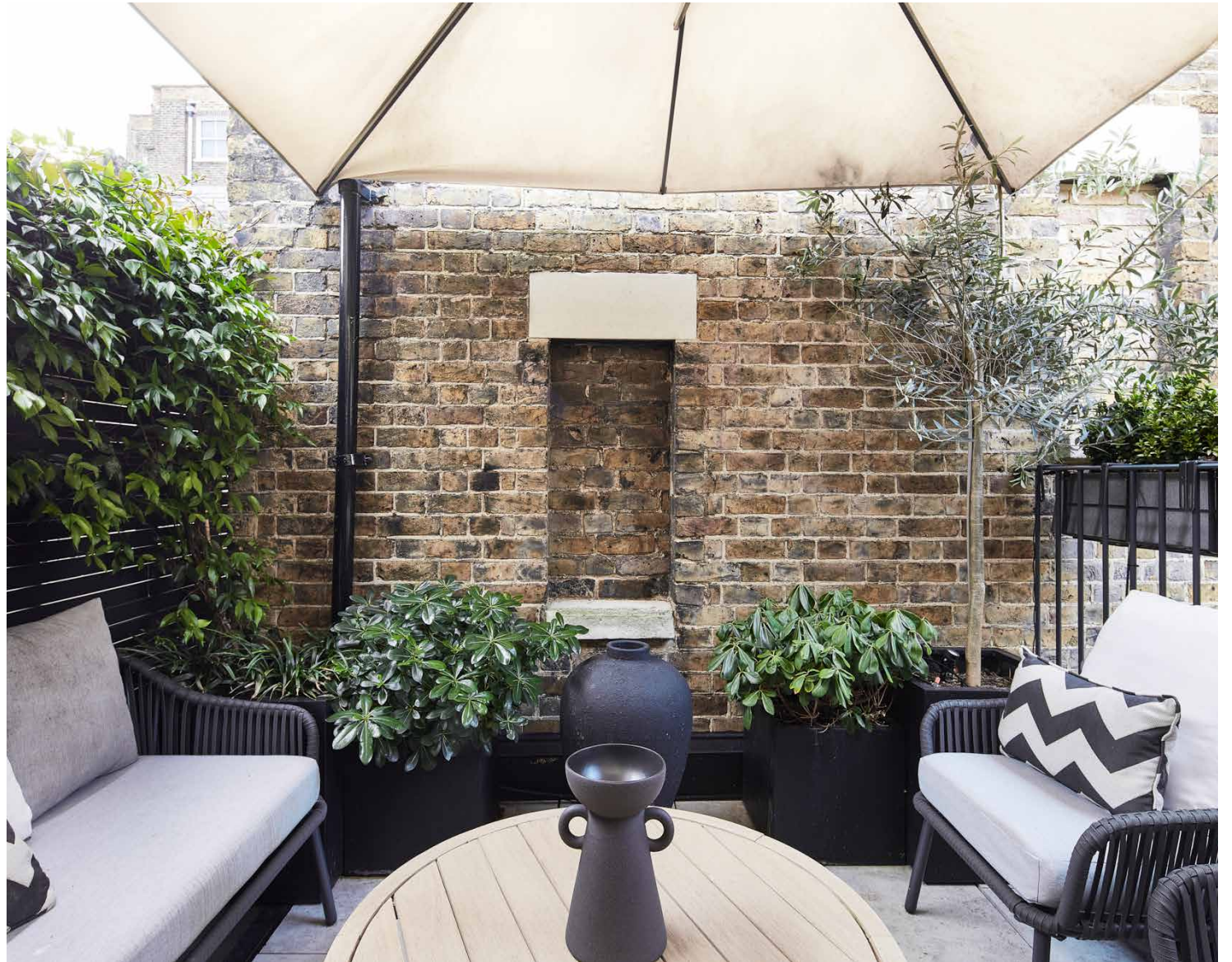






Outdoor spaces

Through a Crittall door off the kitchen, a private, plant-filled roof terrace unfolds – the perfect backdrop for an al fresco breakfast or an evening drink. The bedrooms also enjoy private access to a Juliet balcony with views over Portobello Road, and a small terrace perfect for sunny mornings.



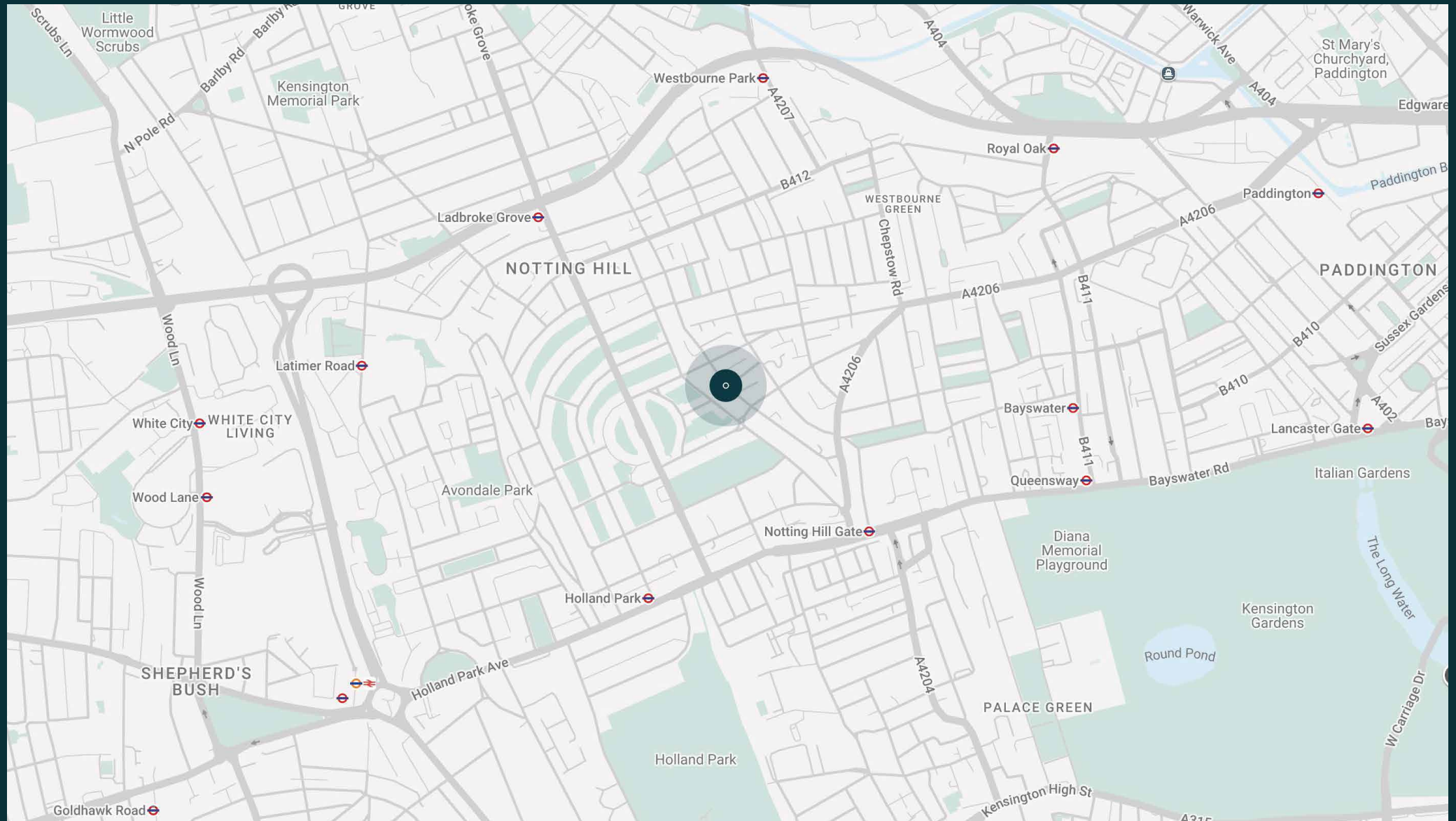


The neighbourhood

A centre for antiques traders, vintage boutiques and global eateries, Portobello Road is the beating heart of this west London neighbourhood.

Found on one of the capital's most famous streets, the best of community-minded Notting Hill is on your doorstep. The options are endless here. Pick up a sourdough loaf from Fabrique, drop into an uplifting workout class at SoulCycle, or peruse the market's eclectic range of stalls and food stands. For evening ventures, book a table at Holy Carrot or The Ledbury, both just minutes away. End the evening close to home with a late-night tipple at Gold.





Property features

- Open-plan kitchen and reception room
- Principal bedroom suite
- Guest bedroom
- One further bathroom
- Two private roof terraces and Juliet balcony
- Royal Borough of Kensington & Chelsea

Approx. 861sq ft / 80 sq m



Guest & concierge services

Our concierge team are here to help guests settle in, seamlessly. Centre court tickets to Wimbledon, Premier League seats with the best views, Savile Row tailors on standby, or a private chef to cater to individual tastes – we aim to elevate every stay.

From the moment of booking with us, each guest has a single point of contact to finesse the details. Our statement spaces are just the starting point – to ensure everyone feels at home, our rates include:

-
- Weekly housekeeping
 - Flexible check-in/out
 - Luxury linens and Bamford toiletries
 - Legal compliance on all our homes
 - A personal welcome and arrival essentials
 - Unlimited access to guest services and tailored experiences
 - Professional inventory inspection before and after every stay
 - Access to a curated portfolio of sole agency properties





Please get in touch if you have any questions
or require any further information.

hello@domusstay.com

+44 (0)20 8168 8880

The property particulars are a guide not statements. Descriptions, photographs, and plans are for guidance only. The Property is offered "subject to contract and references". No warranties, representations, License or Tenancy is given by Domus Stay. Our full disclaimer together with trading names and our Privacy Policy is shown on our website

© Domus Stay 2025. All rights reserved.

