

domus  
stay.

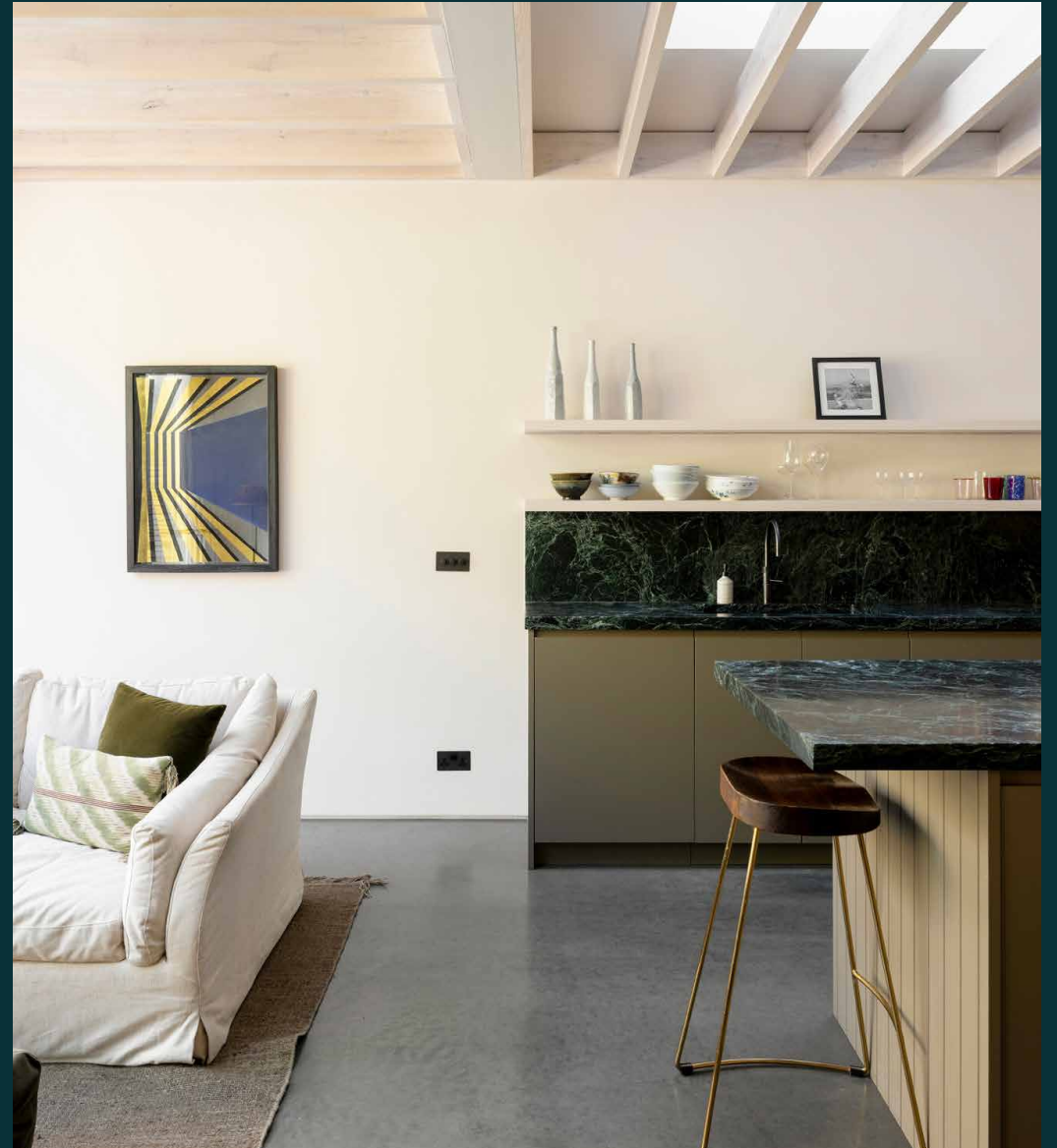
---

# Penshurst Road

HACKNEY

3 Bedrooms, 3 Bathrooms  
For 6 guests

---





Two houses in one. A terrace near Victoria Park, where original character pairs with a light-filled extension for easy family living.

From the street, Peshurst Road reads as a familiar East London scene – blonde brick, an ornate arched porch, a quiet residential row moments from Victoria Park. Inside, original Victorian rooms carry warmth: period detail, alcove shelving and stacks of character. At the back, a lower-level extension takes a different approach, designed with a sweep of polished concrete and a wall of glass that dissolves boundaries with the garden.



# The living spaces

The first floor announces the home's period credentials. Tall ceilings, runs of decorative corning and a wide bay window that floods the sitting room with light. Double doors draw back to reveal an adjoining bedroom – a generous pairing that, along with the family bathroom on the same level, can function as a self-contained suite.

Downstairs, the extension is given over to daily life. Whitewashed beams lift the ceiling; polished concrete grounds it. The kitchen runs along one wall – olive-green handleless cabinetry, green marble worktop and splashback, an island with an overhang for perching. A long dining table with woven chairs sits alongside, a bench running its full length for when numbers grow. Slide back the glass wall and the landscaped patio garden folds in.







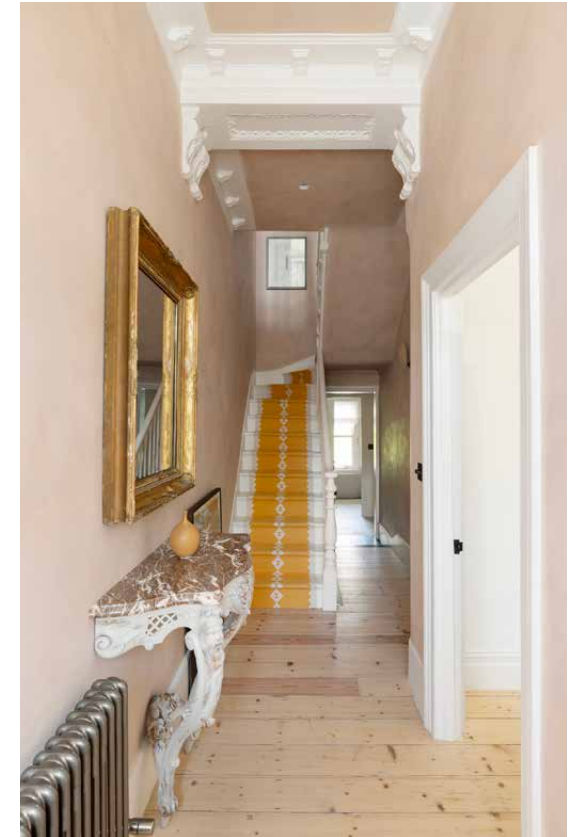


An arched opening leads through to the original front of the house, where a sage green reception room wraps itself around a bay window banquette – terracotta cushions, a round table and roman blinds that diffuse the light. Alcove shelving flanks the fireplace on either side; a cream sofa offers a quieter corner to settle into.

## Bedrooms & bathrooms

On the top floor, the principal bedroom makes an impression. A full-width Flemish-style tapestry – dense with woodland, castles and trees – covers one wall entirely. The en suite is its counterpoint: restrained and considered, with stone-tiled floors, a freestanding bath, a walk-in shower and rattan-inset wardrobes.

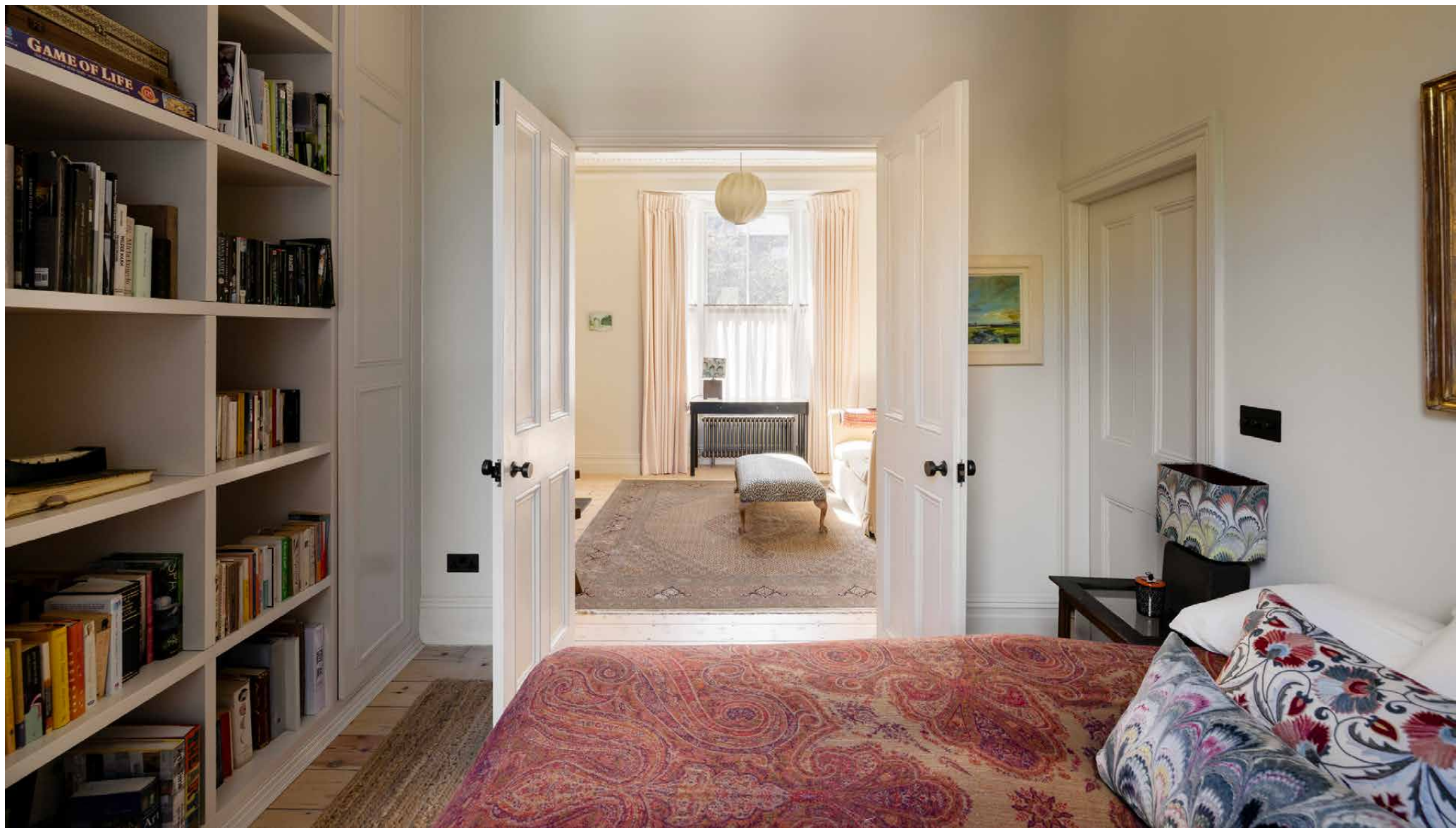
A second bedroom has been arranged with younger guests in mind, featuring a painted yellow chest and a solar system mobile overhead. The third sits on the first floor alongside the sitting room, served by the family bathroom a few steps away.



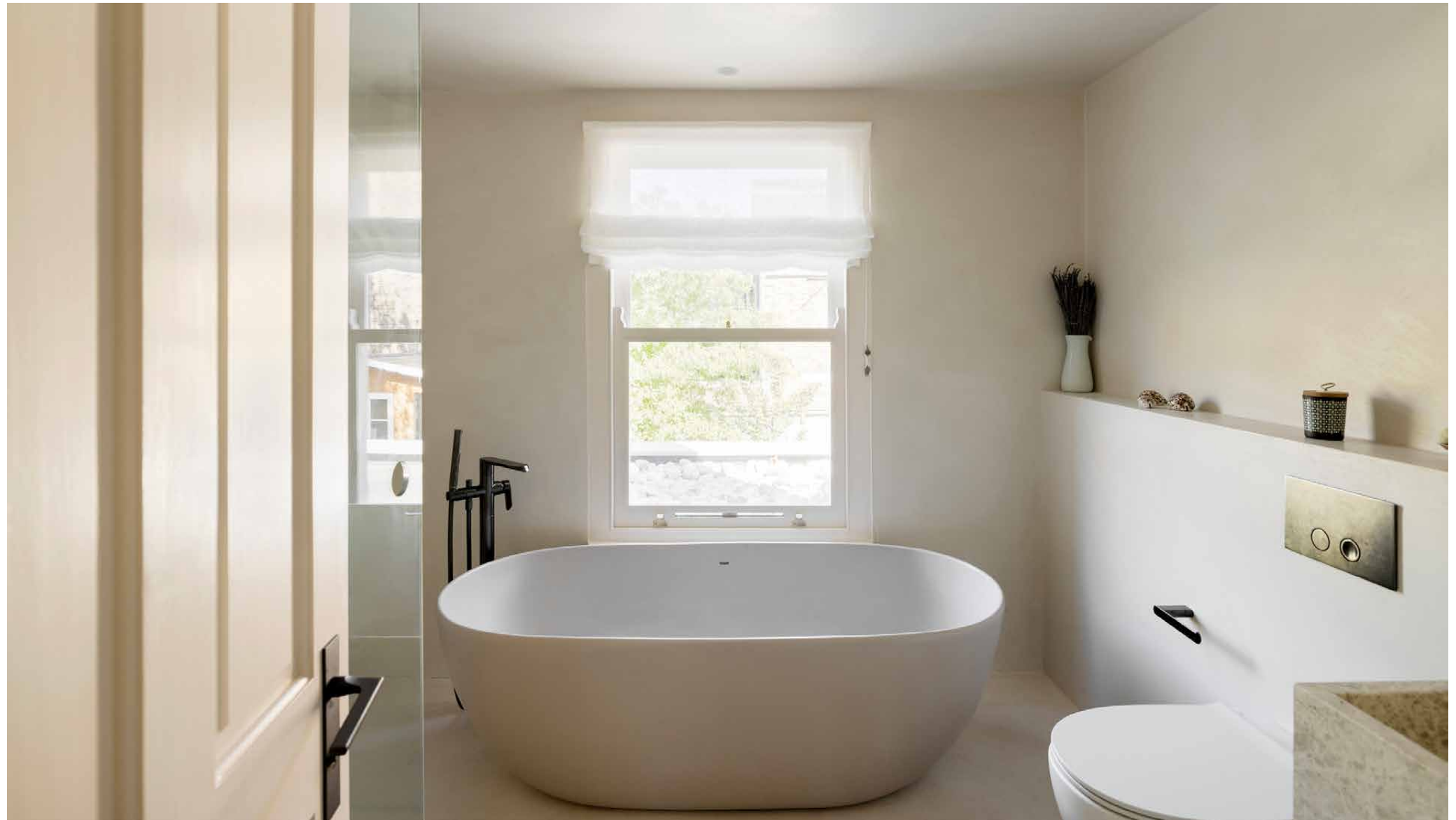












# Outdoor space

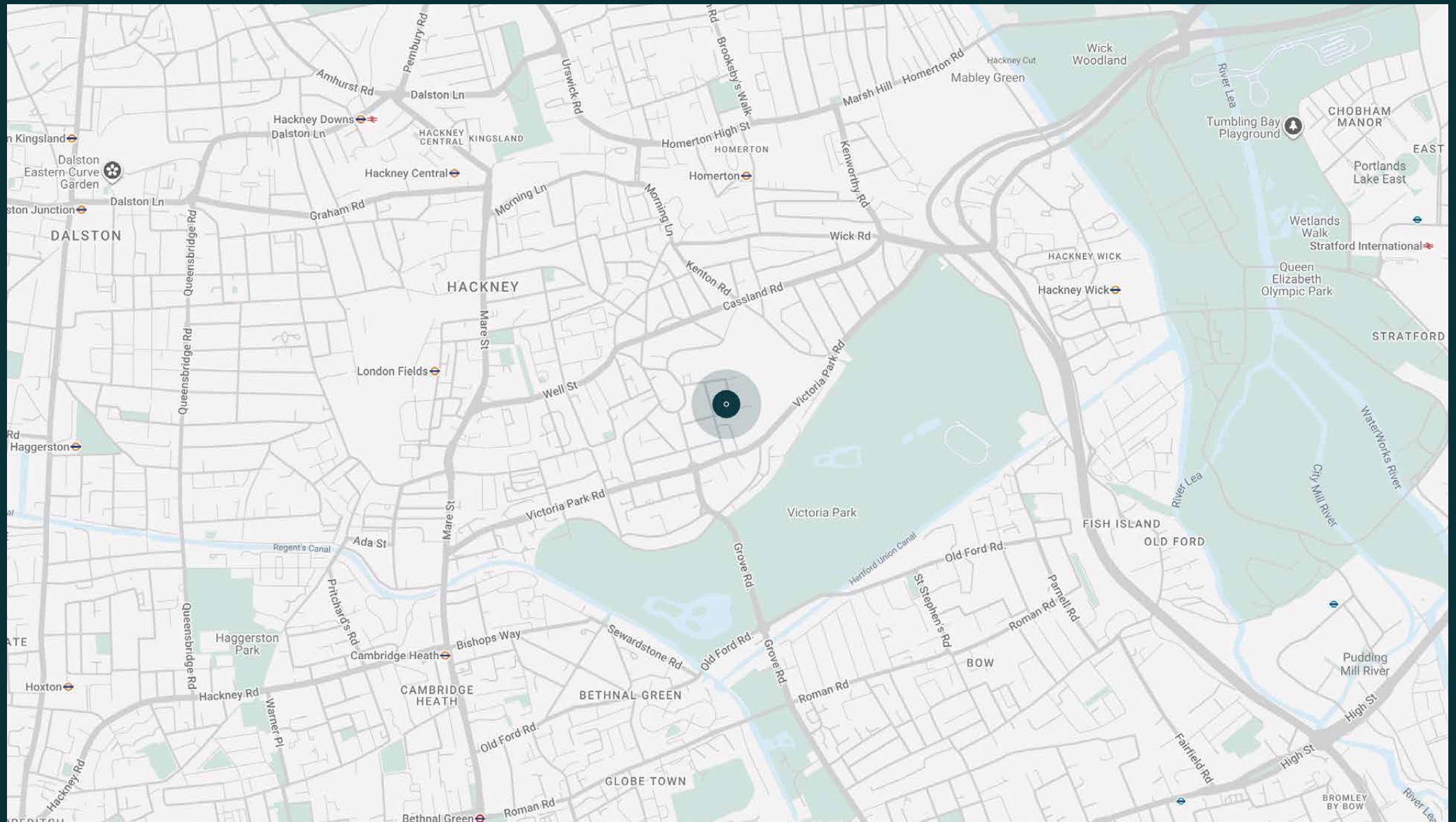
The lower ground's glass wall slides back to a landscaped garden, a natural continuation of the interior. Planted beds line the sides, where wild flowers and greenery soften the stone underfoot. A large curving bench is built into the lower level – an easy spot to settle when the sun is out.



# The neighbourhood

Penshurst Road sits in a well-connected east London location, moments from the western gate of Victoria Park. Here, acres of open space feature playgrounds, a boating lake and a Sunday farmers' market. Elsewhere, Broadway Market is 20-minutes on foot: a Saturday street event that turns the neighbourhood out in force. The dining scene in this corner of east London punches well above its postcode. BEHIND, on the edge of London Fields, holds a Michelin star and eighteen kitchen-table seats for a fish-focused tasting menu. Sune, just over the bridge from Broadway Market, offers candlelit evenings with a natural wine list. London Fields and Hackney Central overground stations put Liverpool Street within easy reach.





# Property features

- Two reception rooms
- Open-plan kitchen, dining and sitting room
- Green marble kitchen with island
- Principal bedroom suite
- First floor sitting room and bedroom
- Family bathroom
- Landscaped garden with built-in bench
- Outdoor dining terrace
- London Borough of Hackney

---

Approx. 1,561 sq ft / 52 sq m



# Guest & concierge services

Our concierge team are here to help guests settle in, seamlessly. Centre court tickets to Wimbledon, Premier League seats with the best views, Savile Row tailors on standby, or a private chef to cater to individual tastes – we aim to elevate every stay.

From the moment of booking with us, each guest has a single point of contact to finesse the details. Our statement spaces are just the starting point – to ensure everyone feels at home, our rates include:

- Weekly housekeeping
- Flexible check-in/out
- Luxury linens and Bamford toiletries
- Legal compliance on all our homes
- A personal welcome and arrival essentials
- Unlimited access to guest services and tailored experiences
- Professional inventory inspection before and after every stay
- Access to a curated portfolio of sole agency properties



# domus stay.

Please get in touch if you have any questions  
or require any further information.

[hello@domusstay.com](mailto:hello@domusstay.com)

+44 (0)20 8168 8880

The property particulars are a guide not statements. Descriptions, photographs, and plans are for guidance only. The Property is offered "subject to contract and references". No warranties, representations, License or Tenancy is given by Domus Stay. Our full disclaimer together with trading names and our Privacy Policy is shown on our website

© Domus Stay 2025. All rights reserved.

